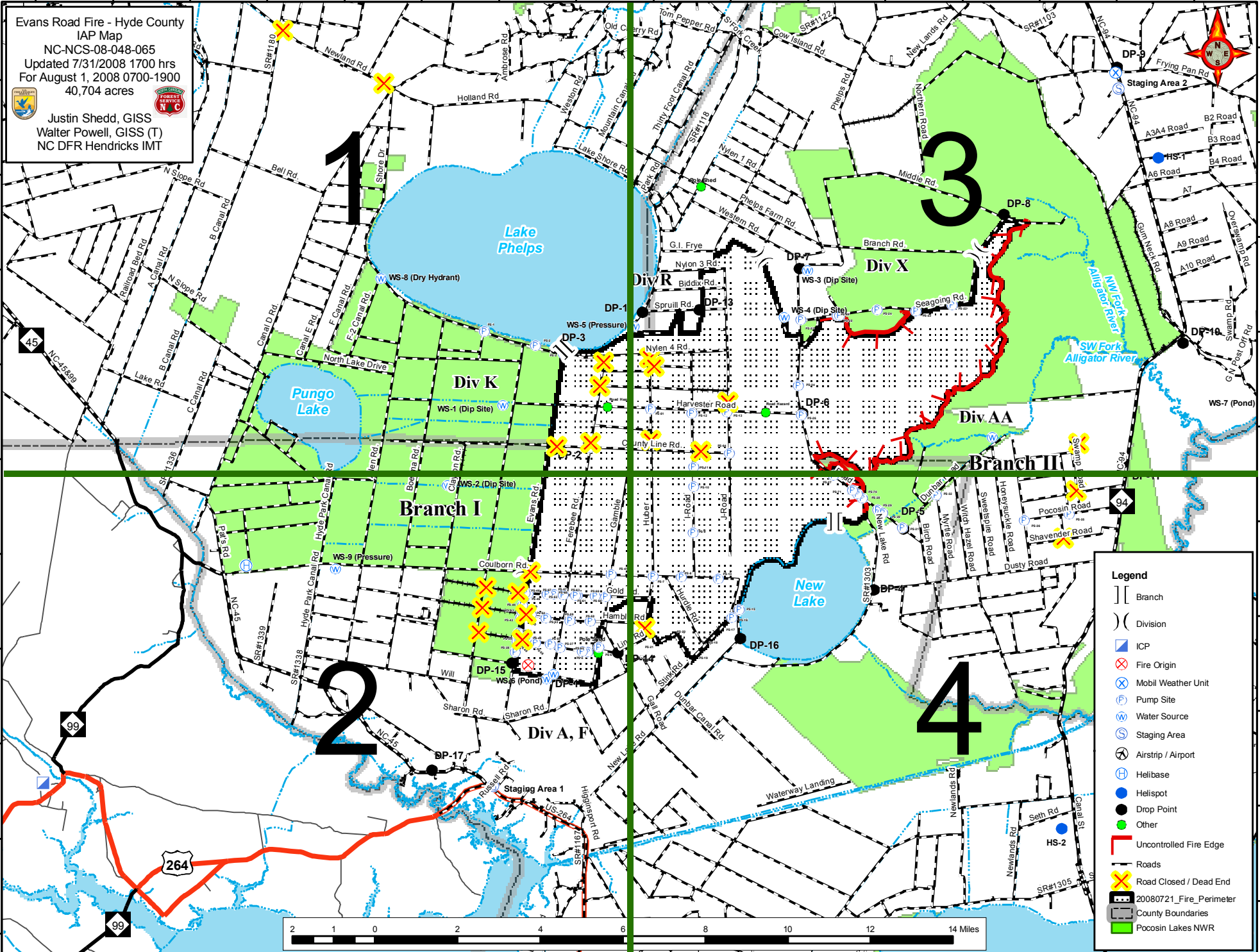


76°40'W 76°38'W 76°36'W 76°34'W 76°32'W 76°30'W 76°28'W 76°26'W 76°24'W 76°22'W 76°20'W 76°18'W 76°16'W 76°14'W 76°12'W 76°10'W

35°50'N 35°48'N 35°46'N 35°44'N 35°42'N 35°40'N 35°38'N 35°36'N 35°34'N 35°32'N

Evans Road Fire - Hyde County
IAP Map
NC-NCS-08-048-065
Updated 7/31/2008 1700 hrs
For August 1, 2008 0700-1900
40,704 acres

Justin Shedd, GISS
Walter Powell, GISS (T)
NC DFR Hendricks IMT



Legend

- [] Branch
- () Division
- ICP
- Fire Origin
- Mobil Weather Unit
- Pump Site
- Water Source
- Staging Area
- Airstrip / Airport
- Helibase
- Helispot
- Drop Point
- Other
- Uncontrolled Fire Edge
- Roads
- Road Closed / Dead End
- 20080721_Fire_Perimeter
- County Boundaries
- Pocosin Lakes NWR



76°40'W 76°38'W 76°36'W 76°34'W 76°32'W 76°30'W 76°28'W 76°26'W 76°24'W 76°22'W 76°20'W 76°18'W 76°16'W 76°14'W 76°12'W 76°10'W