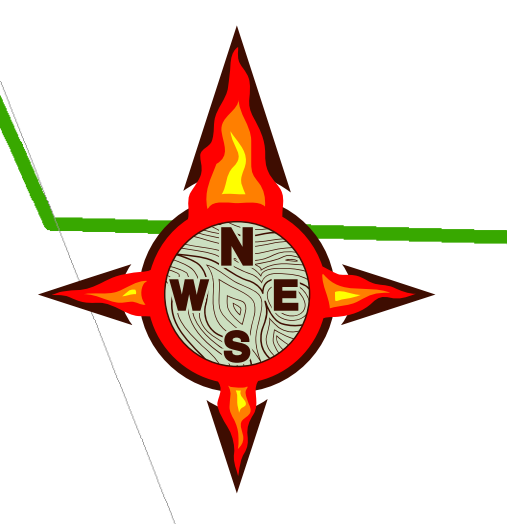
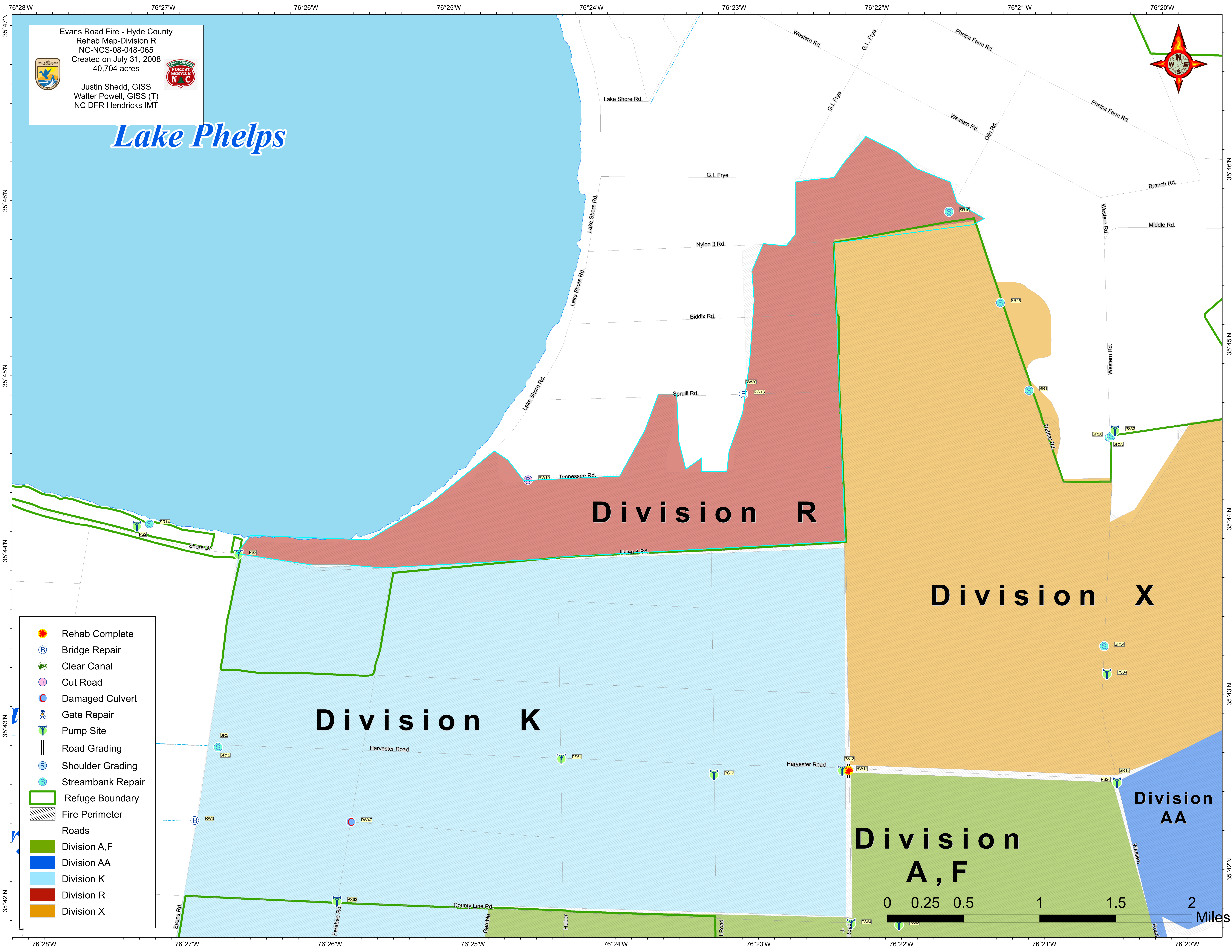


Evans Road Fire - Hyde County
 Rehab Map-Division R
 NC-NCS-08-048-065
 Created on July 31, 2008
 40,704 acres

Justin Shedd, GISS
 Walter Powell, GISS (T)
 NC DFR Hendricks IMT



Lake Phelps



- Rehab Complete
- Bridge Repair
- Clear Canal
- Cut Road
- Damaged Culvert
- Gate Repair
- Pump Site
- Road Grading
- Shoulder Grading
- Streambank Repair
- Refuge Boundary
- Fire Perimeter
- Roads
- Division A, F
- Division AA
- Division K
- Division R
- Division X

