
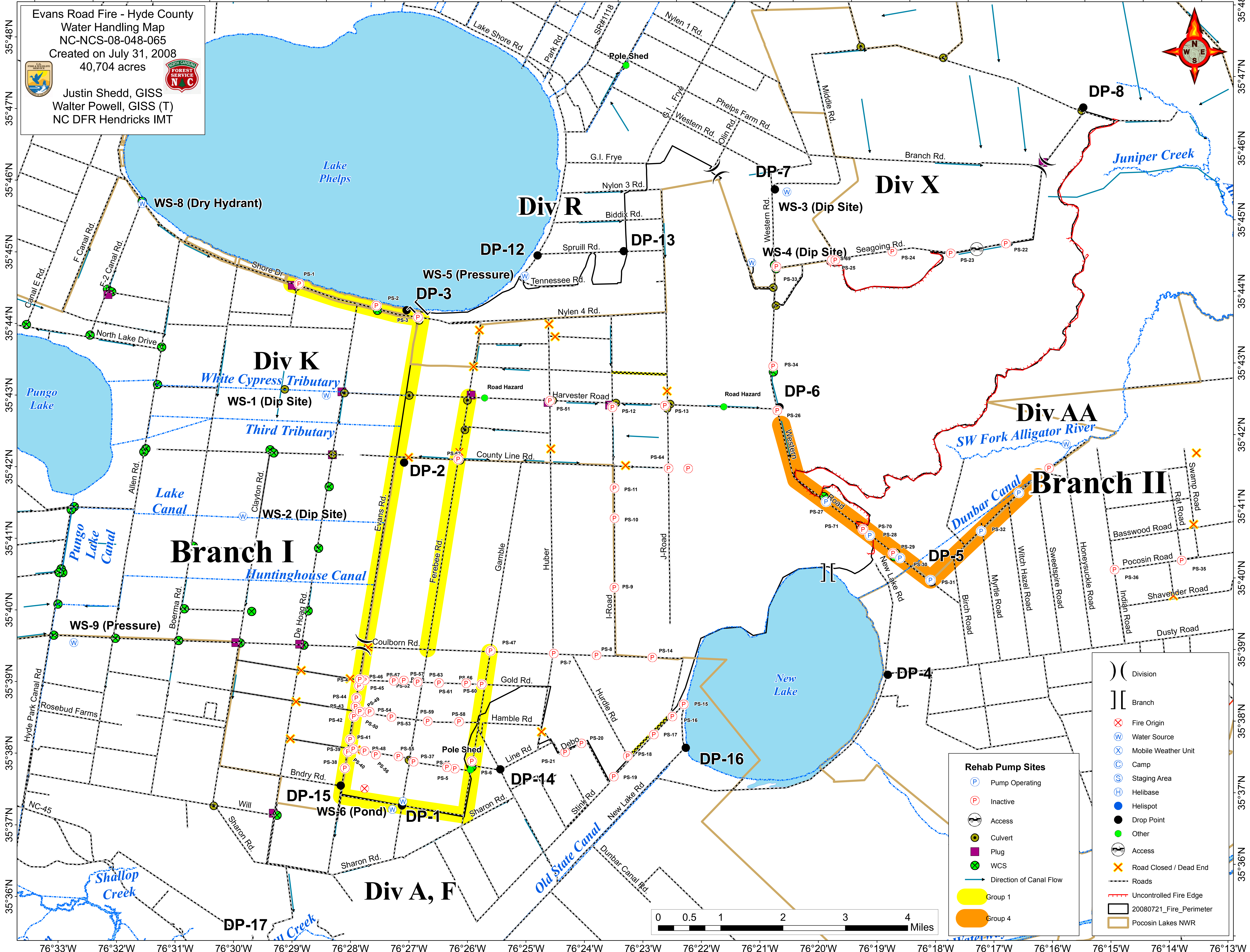


76°33'W 76°32'W 76°31'W 76°30'W 76°29'W 76°28'W 76°27'W 76°26'W 76°25'W 76°24'W 76°23'W 76°22'W 76°21'W 76°20'W 76°19'W 76°18'W 76°17'W 76°16'W 76°15'W 76°14'W 76°13'W

Evans Road Fire - Hyde County
 Water Handling Map
 NC-NCS-08-048-065
 Created on July 31, 2008
 40,704 acres



Justin Shedd, GISS
 Walter Powell, GISS (T)
 NC DFR Hendricks IMT



Rehab Pump Sites

- (P) Pump Operating
- (P) Inactive
- (P) Access
- (C) Culvert
- (P) Plug
- (X) WCS
- (P) Direction of Canal Flow
- (Yellow) Group 1
- (Orange) Group 4

- () Division
- [] Branch
- (X) Fire Origin
- (W) Water Source
- (X) Mobile Weather Unit
- (C) Camp
- (S) Staging Area
- (H) Helibase
- (Blue) Helispot
- (Black) Drop Point
- (Green) Other
- (P) Access
- (X) Road Closed / Dead End
- (Dashed) Roads
- (Red) Uncontrolled Fire Edge
- (Black) 20080721_Fire_Perimeter
- (Orange) Pocosin Lakes NWR

