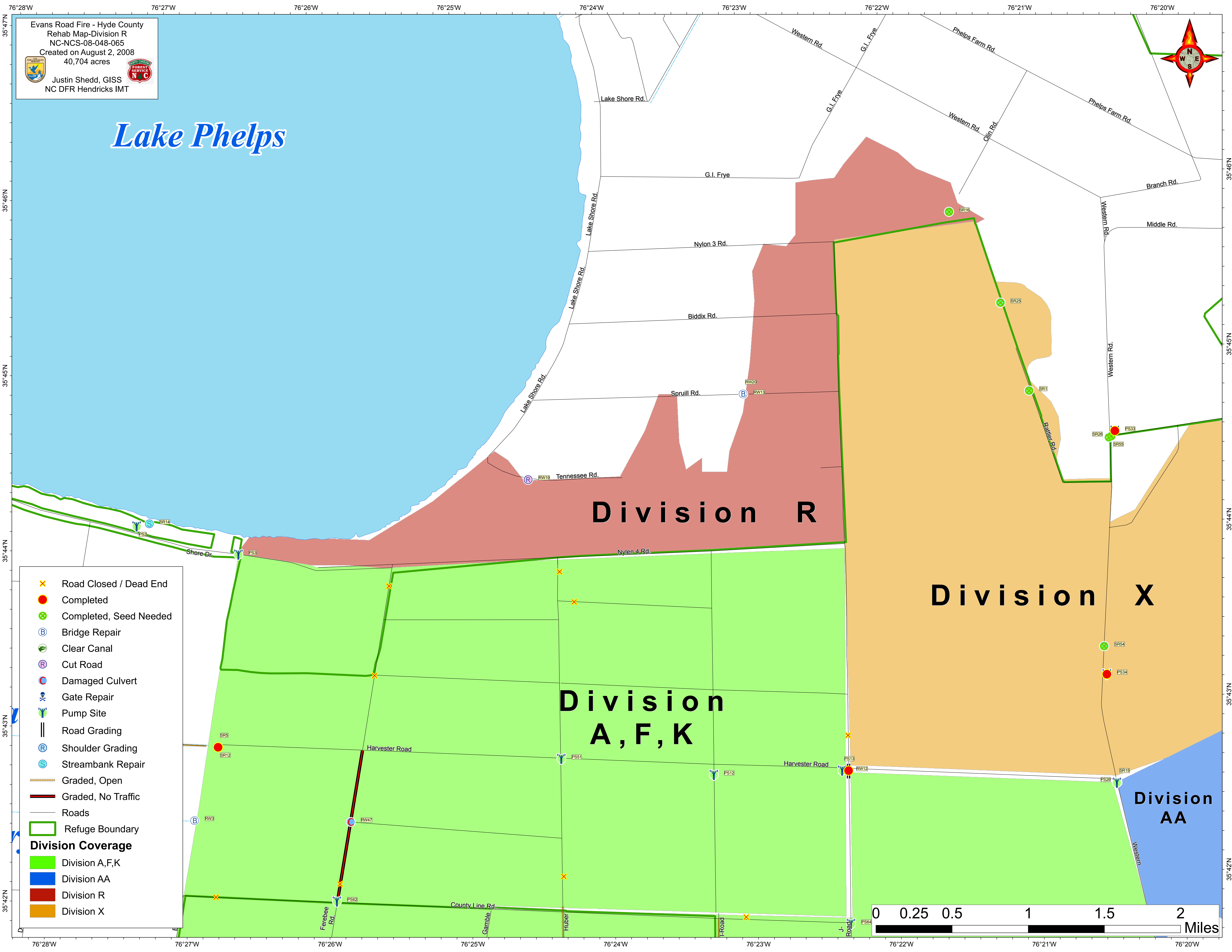
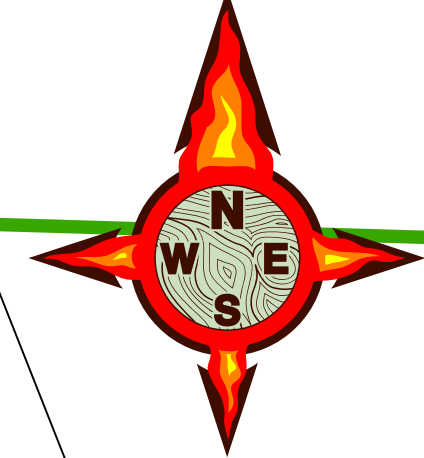


Evans Road Fire - Hyde County
 Rehab Map-Division R
 NC-NCS-08-048-065
 Created on August 2, 2008
 40,704 acres

Justin Shedd, GISS
 NC DFR Hendricks IMT

Lake Phelps



- ✕ Road Closed / Dead End
 - Completed
 - ⊕ Completed, Seed Needed
 - Ⓟ Bridge Repair
 - ☪ Clear Canal
 - Ⓡ Cut Road
 - Ⓢ Damaged Culvert
 - Ⓣ Gate Repair
 - Ⓤ Pump Site
 - || Road Grading
 - Ⓡ Shoulder Grading
 - Ⓢ Streambank Repair
 - ▨ Graded, Open
 - ▬ Graded, No Traffic
 - Roads
 - ▭ Refuge Boundary
- Division Coverage**
- Division A, F, K
 - Division AA
 - Division R
 - Division X

