
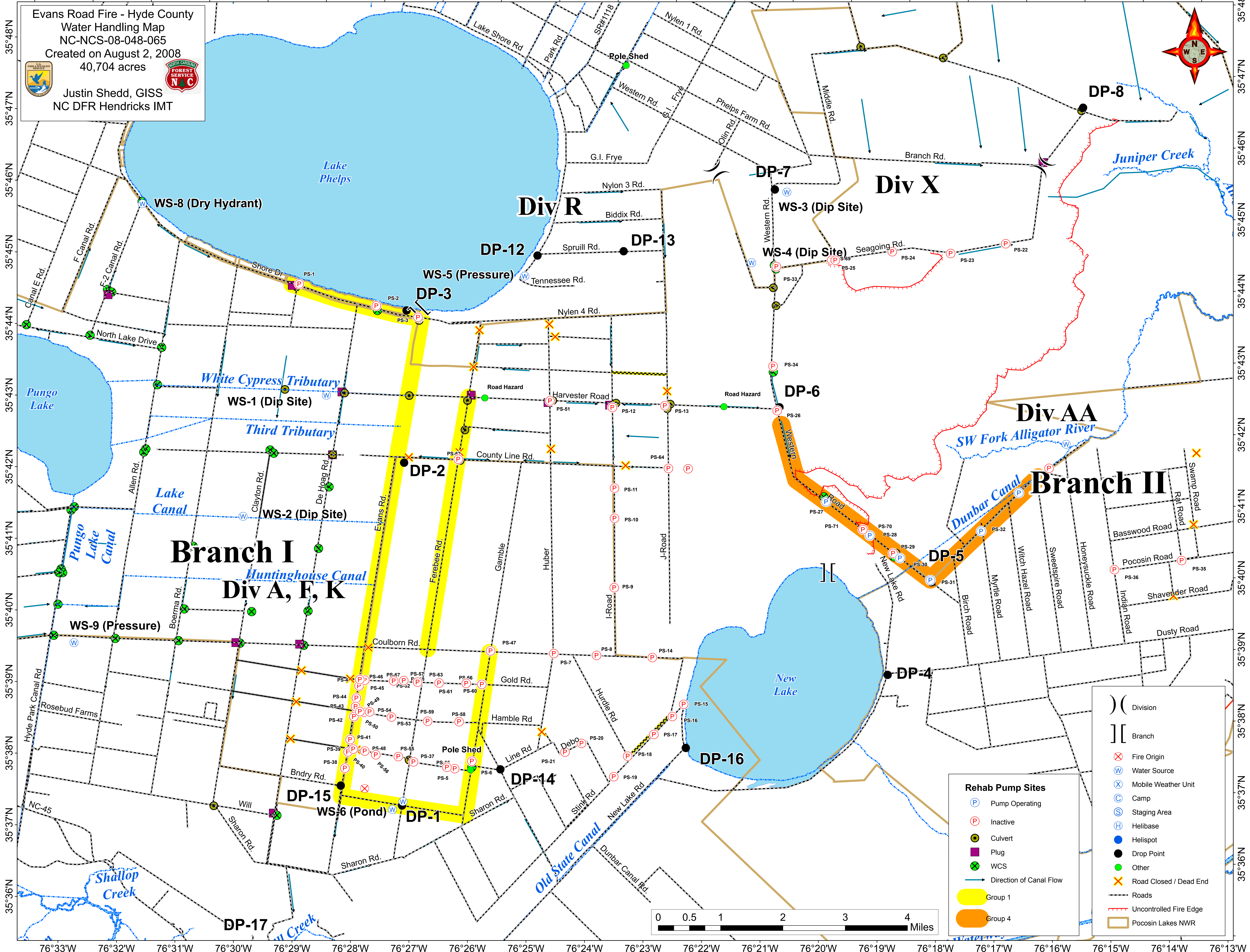


76°33'W 76°32'W 76°31'W 76°30'W 76°29'W 76°28'W 76°27'W 76°26'W 76°25'W 76°24'W 76°23'W 76°22'W 76°21'W 76°20'W 76°19'W 76°18'W 76°17'W 76°16'W 76°15'W 76°14'W 76°13'W

Evans Road Fire - Hyde County
 Water Handling Map
 NC-NCS-08-048-065
 Created on August 2, 2008
 40,704 acres



Justin Shedd, GISS
 NC DFR Hendricks IMT



Rehab Pump Sites

- (P) Pump Operating
- (P) Inactive
- (C) Culvert
- (M) Plug
- (W) WCS
- (→) Direction of Canal Flow
- (Yellow) Group 1
- (Orange) Group 4

- () Division
- [] Branch
- (X) Fire Origin
- (W) Water Source
- (X) Mobile Weather Unit
- (C) Camp
- (S) Staging Area
- (H) Helibase
- (●) Helispot
- (●) Drop Point
- (●) Other
- (X) Road Closed / Dead End
- (---) Roads
- (---) Uncontrolled Fire Edge
- (---) Pocosin Lakes NWR

