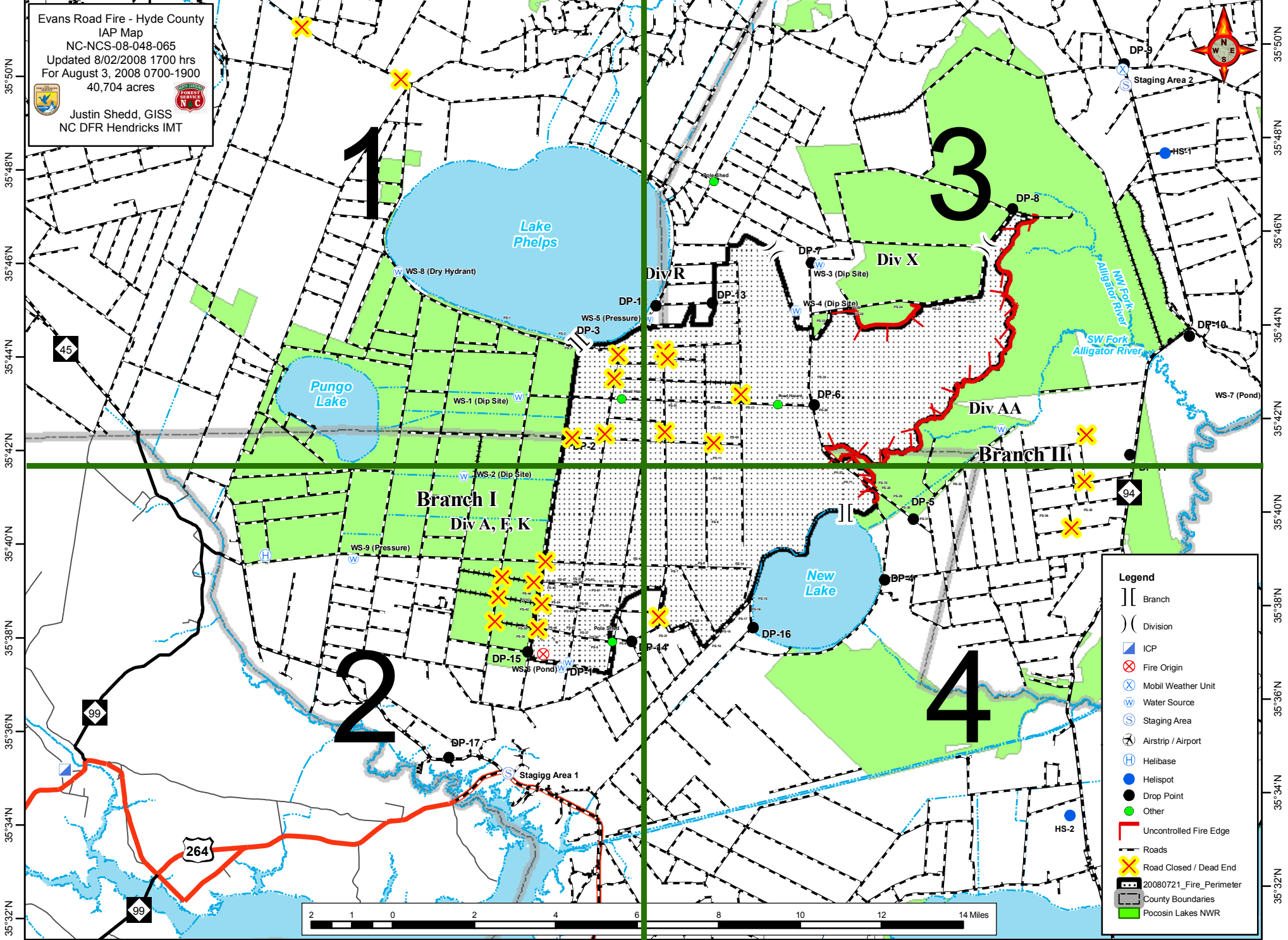


76°40'W 76°38'W 76°36'W 76°34'W 76°32'W 76°30'W 76°28'W 76°26'W 76°24'W 76°22'W 76°20'W 76°18'W 76°16'W 76°14'W 76°12'W 76°10'W

Evans Road Fire - Hyde County
IAP Map
NC-NCS-08-048-065
Updated 8/02/2008 1700 hrs
For August 3, 2008 0700-1900
40,704 acres
Justin Shedd, GISS
NC DFR Hendricks IMT



- Legend**
- [] Branch
 - () Division
 - ▢ ICP
 - ⊗ Fire Origin
 - ⊗ Mobil Weather Unit
 - ⊕ Water Source
 - ⊙ Staging Area
 - ⊖ Airstrip / Airport
 - ⊕ Helibase
 - ⊕ Helispot
 - Drop Point
 - Other
 - Uncontrolled Fire Edge
 - Roads
 - ⊗ Road Closed / Dead End
 - ▭ 20080721_Fire_Perimeter
 - ▭ County Boundaries
 - ▭ Pocosin Lakes NWR



35°50'N
35°48'N
35°46'N
35°44'N
35°42'N
35°40'N
35°38'N
35°36'N
35°34'N
35°32'N

35°50'N
35°48'N
35°46'N
35°44'N
35°42'N
35°40'N
35°38'N
35°36'N
35°34'N
35°32'N

76°40'W 76°38'W 76°36'W 76°34'W 76°32'W 76°30'W 76°28'W 76°26'W 76°24'W 76°22'W 76°20'W 76°18'W 76°16'W 76°14'W 76°12'W 76°10'W