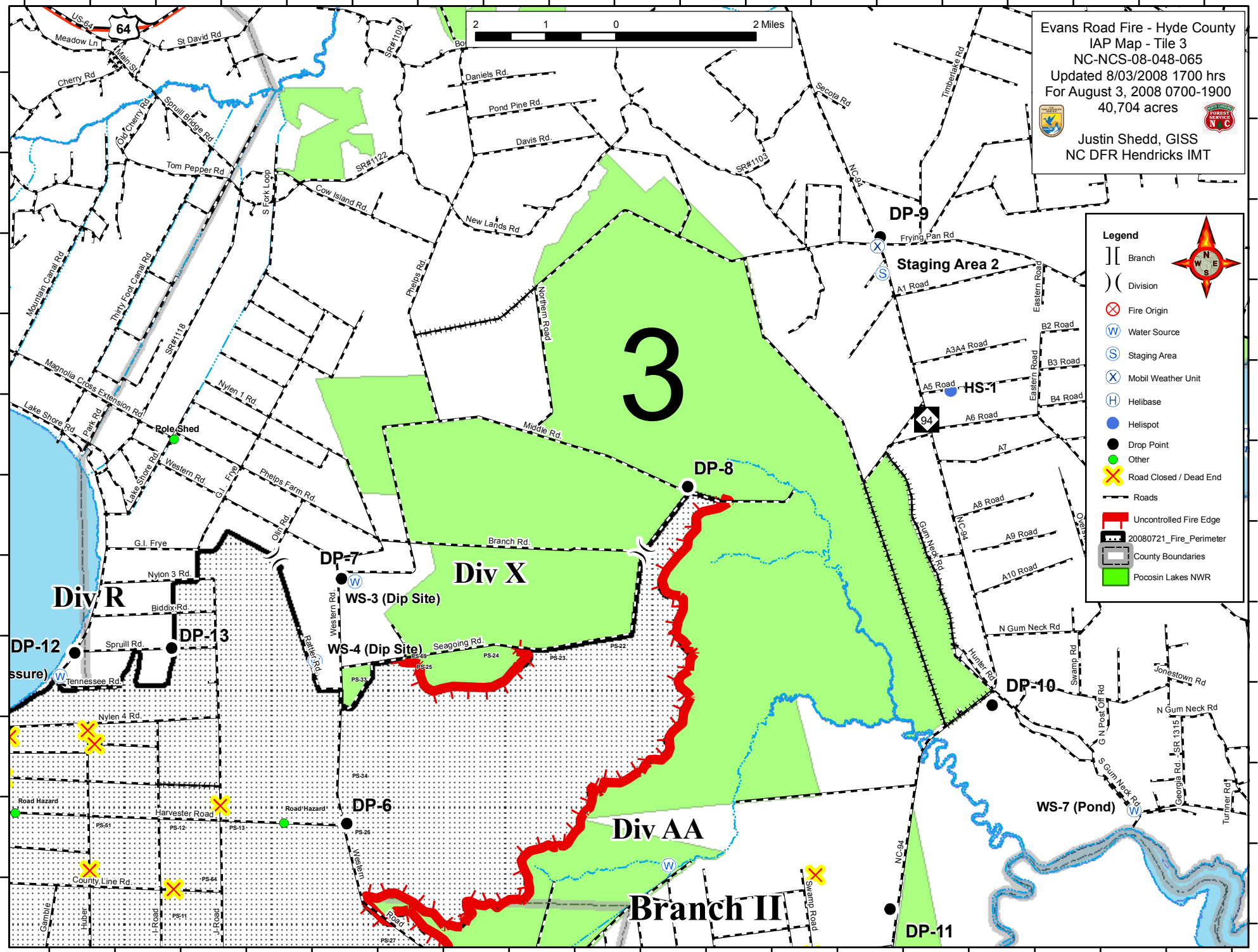


76°25'W 76°24'W 76°23'W 76°22'W 76°21'W 76°20'W 76°19'W 76°18'W 76°17'W 76°16'W 76°15'W 76°14'W 76°13'W 76°12'W 76°11'W 76°10'W 76°9'W 76°8'W 76°7'W




Evans Road Fire - Hyde County  
IAP Map - Tile 3  
NC-NCS-08-048-065  
Updated 8/03/2008 1700 hrs  
For August 3, 2008 0700-1900  
40,704 acres

Justin Shedd, GISS  
NC DFR Hendricks IMT

**Legend**

- Branch
- Division
- Fire Origin
- Water Source
- Staging Area
- Mobil Weather Unit
- Helibase
- Helispot
- Drop Point
- Other
- Road Closed / Dead End
- Roads
- Uncontrolled Fire Edge
- 20080721\_Fire\_Perimeter
- County Boundaries
- Pocosin Lakes NWR



35°52'N  
35°51'N  
35°50'N  
35°49'N  
35°48'N  
35°47'N  
35°46'N  
35°45'N  
35°44'N  
35°43'N  
35°42'N  
35°41'N

35°52'N  
35°51'N  
35°50'N  
35°49'N  
35°48'N  
35°47'N  
35°46'N  
35°45'N  
35°44'N  
35°43'N  
35°42'N  
35°41'N

76°25'W 76°24'W 76°23'W 76°22'W 76°21'W 76°20'W 76°19'W 76°18'W 76°17'W 76°16'W 76°15'W 76°14'W 76°13'W 76°12'W 76°11'W 76°10'W 76°9'W 76°8'W 76°7'W