

76°31'W 76°30'W 76°29'W 76°28'W 76°27'W 76°26'W 76°25'W 76°24'W 76°23'W 76°22'W 76°21'W 76°20'W 76°19'W 76°18'W 76°17'W 76°16'W 76°15'W 76°14'W 76°13'W 76°12'W 76°11'W

Evans Road Fire - Hyde County  
Operations Map  
NC-NCS-08-048-065  
Updated 8/04/2008 1200 hrs  
For August 4, 2008  
40,704 acres



Justin Shedd, GIS  
NC DFR Hendricks IMT

Lake Phelps

Div R

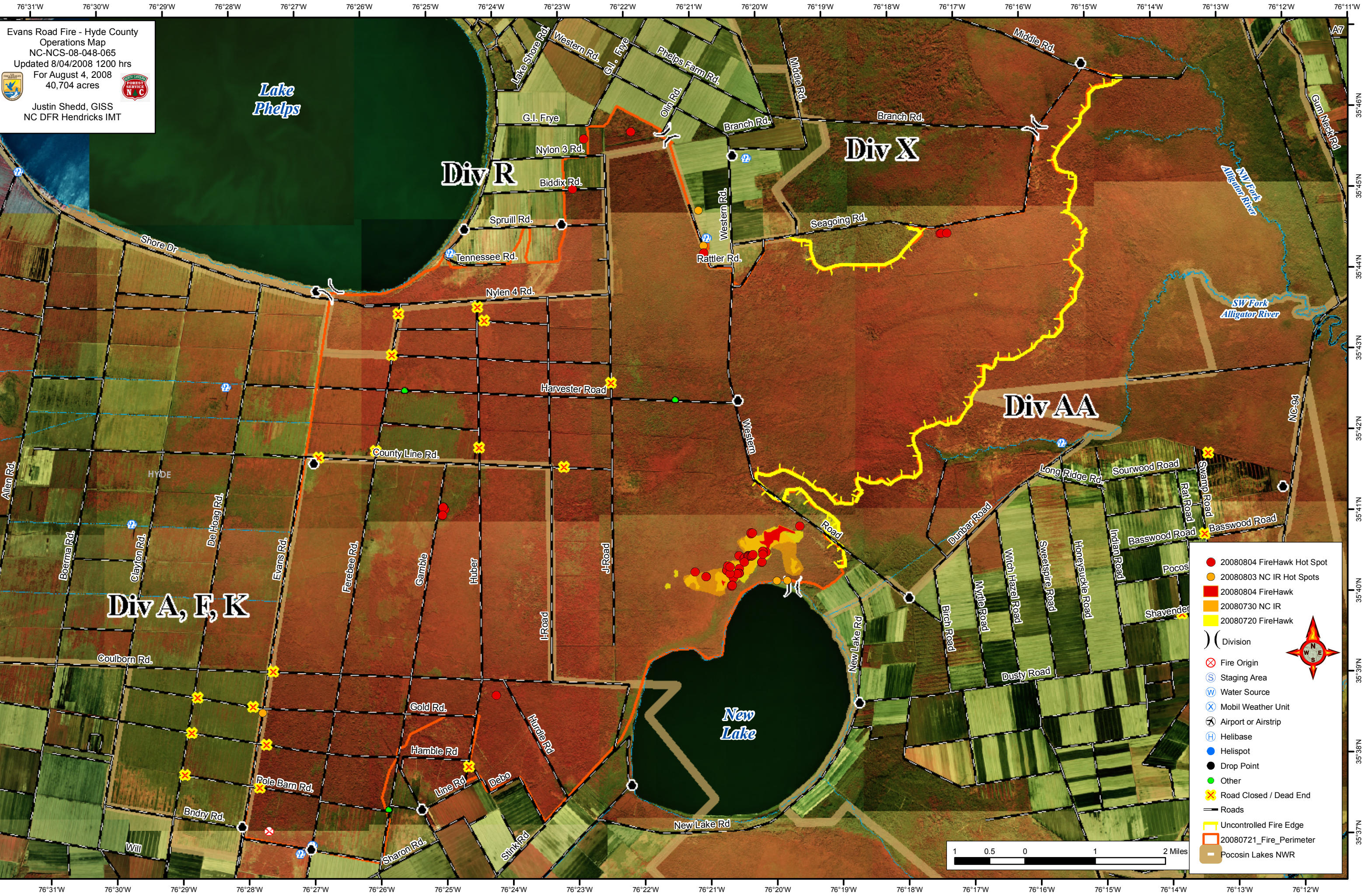
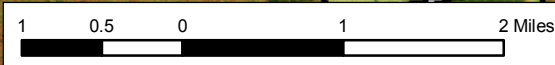
Div X

Div AA

Div A, E, K

New Lake

- 20080804 FireHawk Hot Spot
- 20080803 NC IR Hot Spots
- 20080804 FireHawk
- 20080730 NC IR
- 20080720 FireHawk
- ( ) Division
- ⊗ Fire Origin
- Ⓢ Staging Area
- Ⓜ Water Source
- Ⓧ Mobil Weather Unit
- ✈ Airport or Airstrip
- Ⓜ Helibase
- Helispot
- Drop Point
- Other
- ⊗ Road Closed / Dead End
- Roads
- Uncontrolled Fire Edge
- 20080721\_Fire\_Perimeter
- Pocosin Lakes NWR



76°31'W 76°30'W 76°29'W 76°28'W 76°27'W 76°26'W 76°25'W 76°24'W 76°23'W 76°22'W 76°21'W 76°20'W 76°19'W 76°18'W 76°17'W 76°16'W 76°15'W 76°14'W 76°13'W 76°12'W