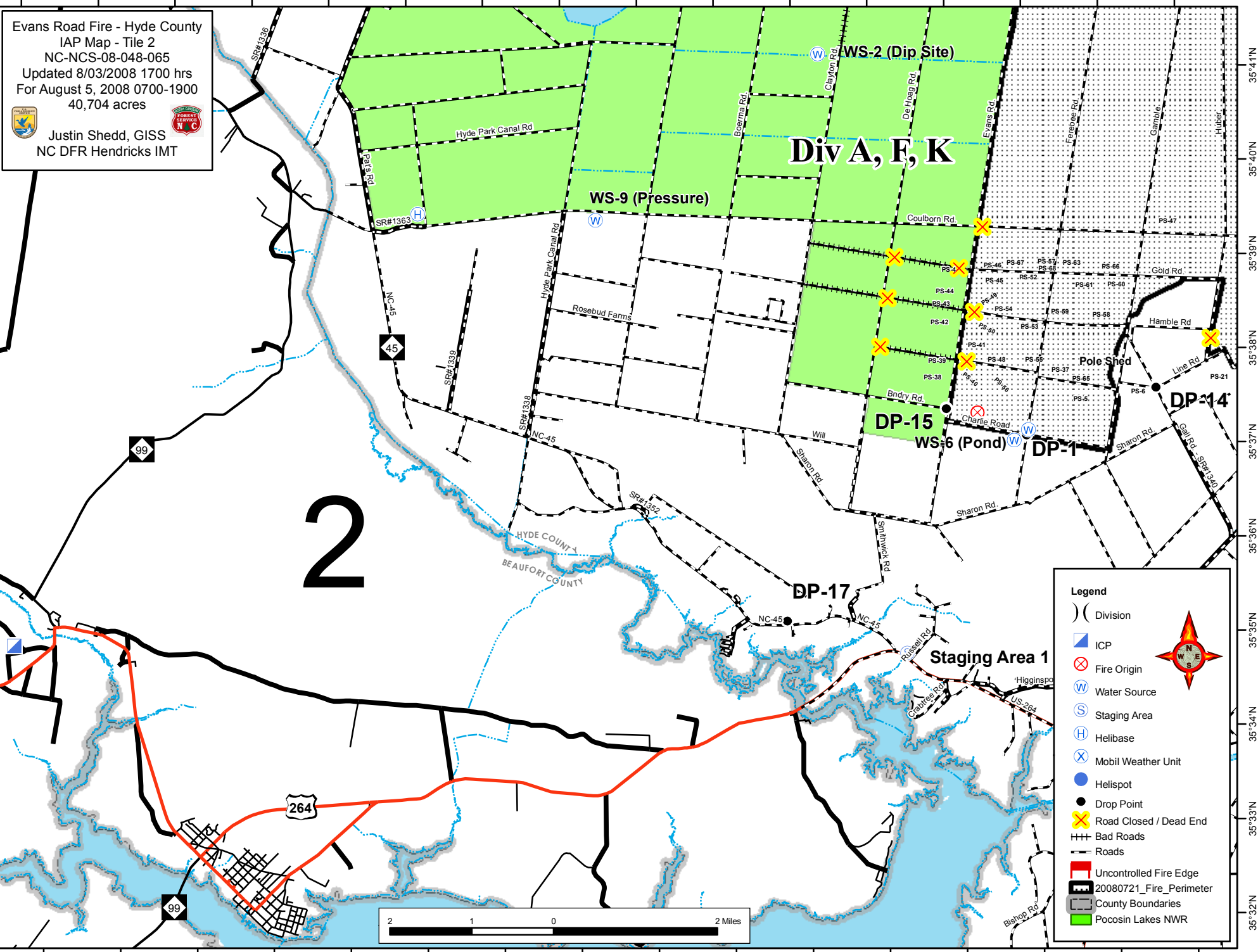



76°40'W 76°39'W 76°38'W 76°37'W 76°36'W 76°35'W 76°34'W 76°33'W 76°32'W 76°31'W 76°30'W 76°29'W 76°28'W 76°27'W 76°26'W 76°25'W



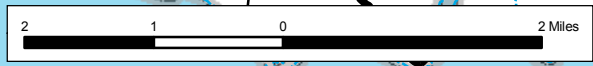

Evans Road Fire - Hyde County  
IAP Map - Tile 2  
NC-NCS-08-048-065  
Updated 8/03/2008 1700 hrs  
For August 5, 2008 0700-1900  
40,704 acres



Justin Shedd, GISS  
NC DFR Hendricks IMT

**Legend**

- ( ) Division
- ICP
- Fire Origin
- Water Source
- Staging Area
- Helibase
- Mobil Weather Unit
- Helispot
- Drop Point
- Road Closed / Dead End
- Bad Roads
- Roads
- Uncontrolled Fire Edge
- 20080721\_Fire\_Perimeter
- County Boundaries
- Pocosin Lakes NWR



2

76°40'W 76°39'W 76°38'W 76°37'W 76°36'W 76°35'W 76°34'W 76°33'W 76°32'W 76°31'W 76°30'W 76°29'W 76°28'W 76°27'W 76°26'W 76°25'W

35°41'N  
35°40'N  
35°39'N  
35°38'N  
35°37'N  
35°36'N  
35°35'N  
35°34'N  
35°33'N  
35°32'N