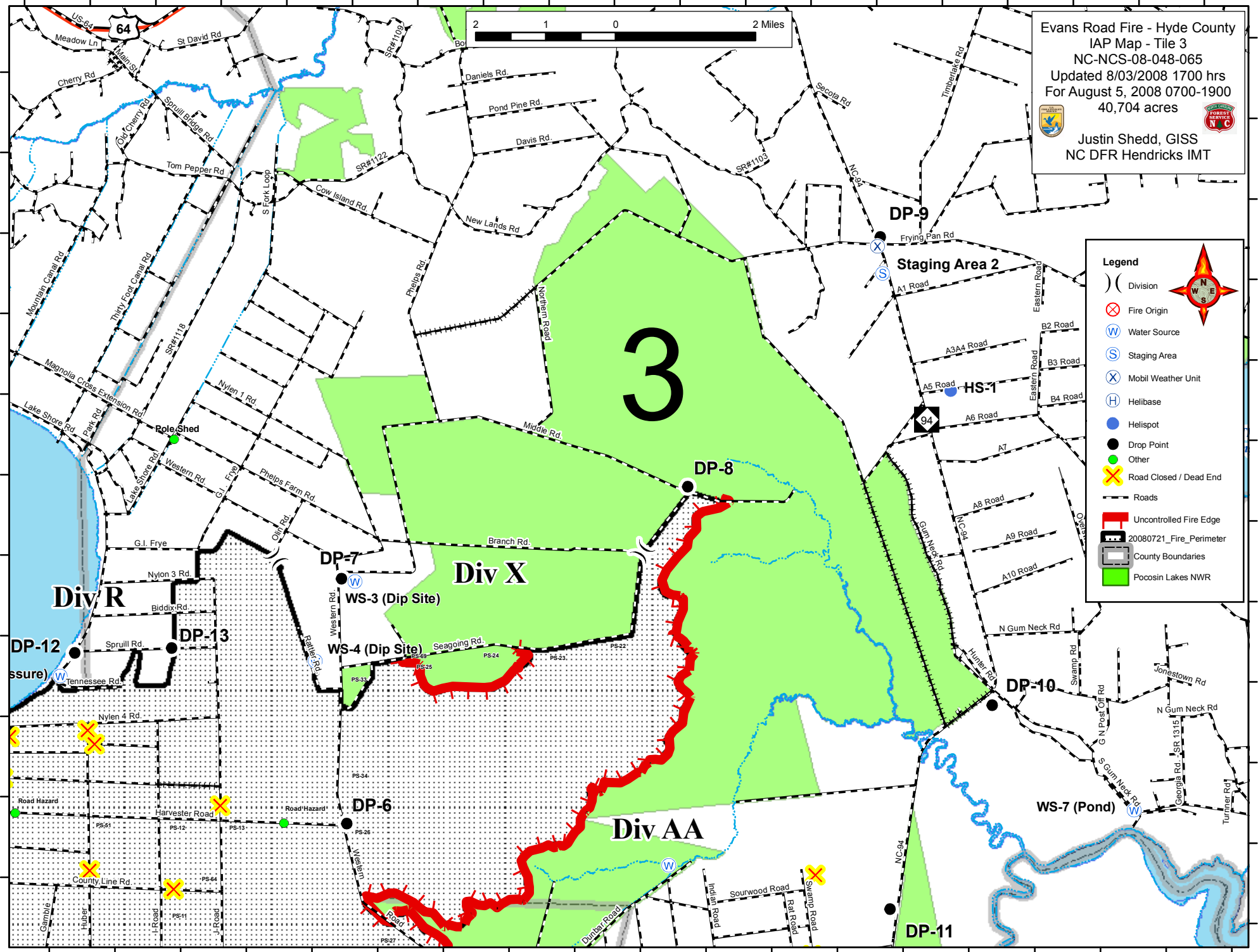


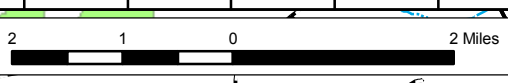
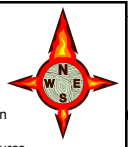
76°25'W 76°24'W 76°23'W 76°22'W 76°21'W 76°20'W 76°19'W 76°18'W 76°17'W 76°16'W 76°15'W 76°14'W 76°13'W 76°12'W 76°11'W 76°10'W 76°9'W 76°8'W 76°7'W



Evans Road Fire - Hyde County
IAP Map - Tile 3
NC-NCS-08-048-065
Updated 8/03/2008 1700 hrs
For August 5, 2008 0700-1900
40,704 acres
Justin Shedd, GISS
NC DFR Hendricks IMT

Legend

- () Division
- (X) Fire Origin
- (W) Water Source
- (S) Staging Area
- (X) Mobil Weather Unit
- (H) Helibase
- (●) Helispot
- (●) Drop Point
- (●) Other
- (X) Road Closed / Dead End
- (---) Roads
- (---) Uncontrolled Fire Edge
- (---) 20080721_Fire_Perimeter
- (---) County Boundaries
- (■) Pocosin Lakes NWR



3

Div X

Div AA

Div R

DP-9

Staging Area 2

HS-1

DP-8

DP-7

WS-3 (Dip Site)

WS-4 (Dip Site)

DP-6

DP-12

DP-13

DP-10

WS-7 (Pond)

DP-11

35°52'N 35°51'N 35°50'N 35°49'N 35°48'N 35°47'N 35°46'N 35°45'N 35°44'N 35°43'N 35°42'N 35°41'N