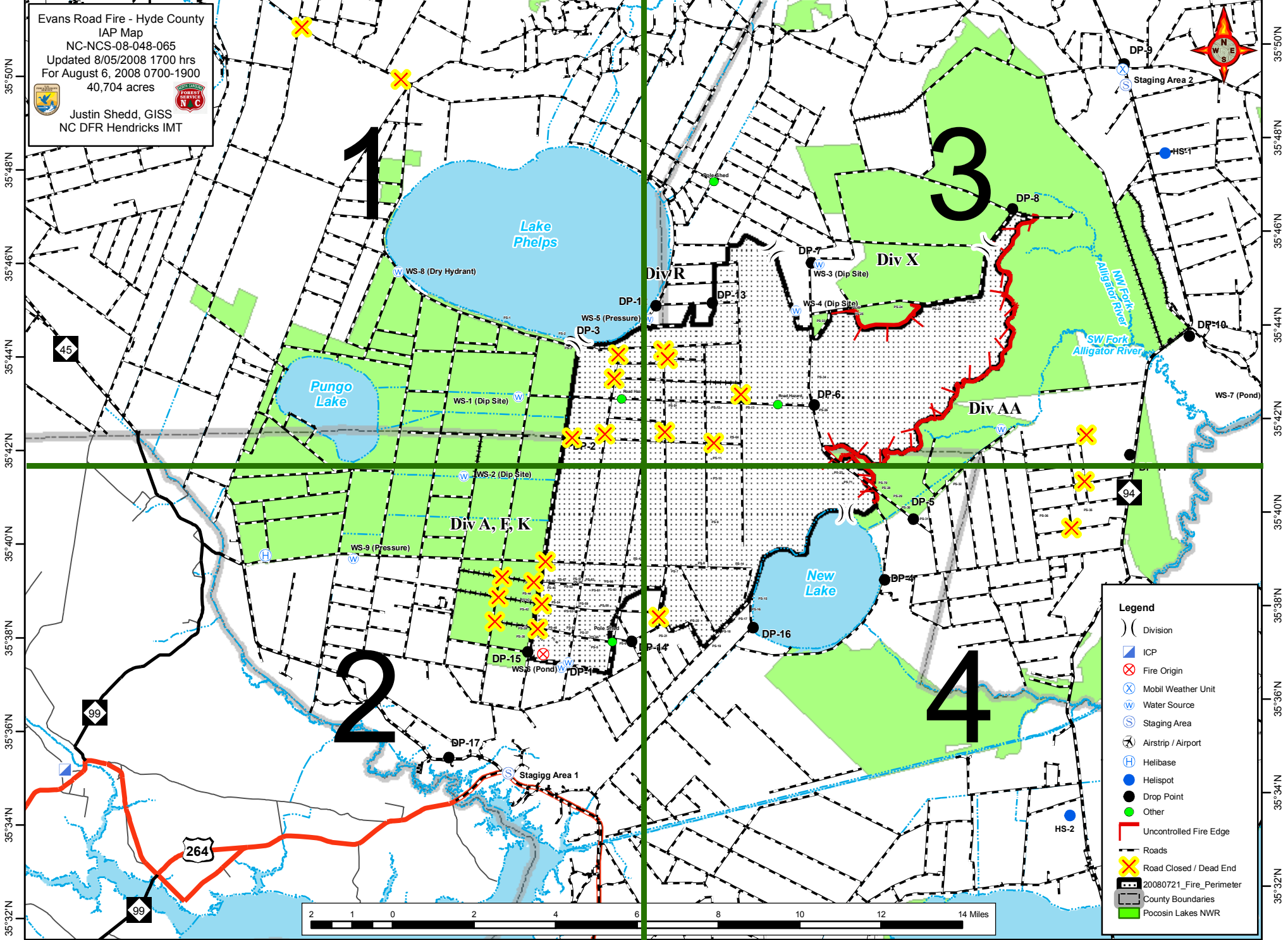


76°40'W 76°38'W 76°36'W 76°34'W 76°32'W 76°30'W 76°28'W 76°26'W 76°24'W 76°22'W 76°20'W 76°18'W 76°16'W 76°14'W 76°12'W 76°10'W

Evans Road Fire - Hyde County  
IAP Map  
NC-NCS-08-048-065  
Updated 8/05/2008 1700 hrs  
For August 6, 2008 0700-1900  
40,704 acres  
Justin Shedd, GISS  
NC DFR Hendricks IMT



**Legend**

- ( ) Division
- ICP
- Fire Origin
- Mobil Weather Unit
- Water Source
- Staging Area
- Airstrip / Airport
- Helibase
- Helispot
- Drop Point
- Other
- Uncontrolled Fire Edge
- Roads
- Road Closed / Dead End
- 20080721\_Fire\_Perimeter
- County Boundaries
- Pocosin Lakes NWR



76°40'W 76°38'W 76°36'W 76°34'W 76°32'W 76°30'W 76°28'W 76°26'W 76°24'W 76°22'W 76°20'W 76°18'W 76°16'W 76°14'W 76°12'W 76°10'W