

76°31'W 76°30'W 76°29'W 76°28'W 76°27'W 76°26'W 76°25'W 76°24'W 76°23'W 76°22'W 76°21'W 76°20'W 76°19'W 76°18'W 76°17'W 76°16'W 76°15'W 76°14'W 76°13'W 76°12'W 76°11'W

Evans Road Fire
Operations Map
NC-NCS-08-048-065
Updated 8/06/2008 1700 hrs
For August 7, 2008
40,704 acres



Justin Shedd, GIS
NC DFR Hendricks IMT

Lake Phelps

Div R

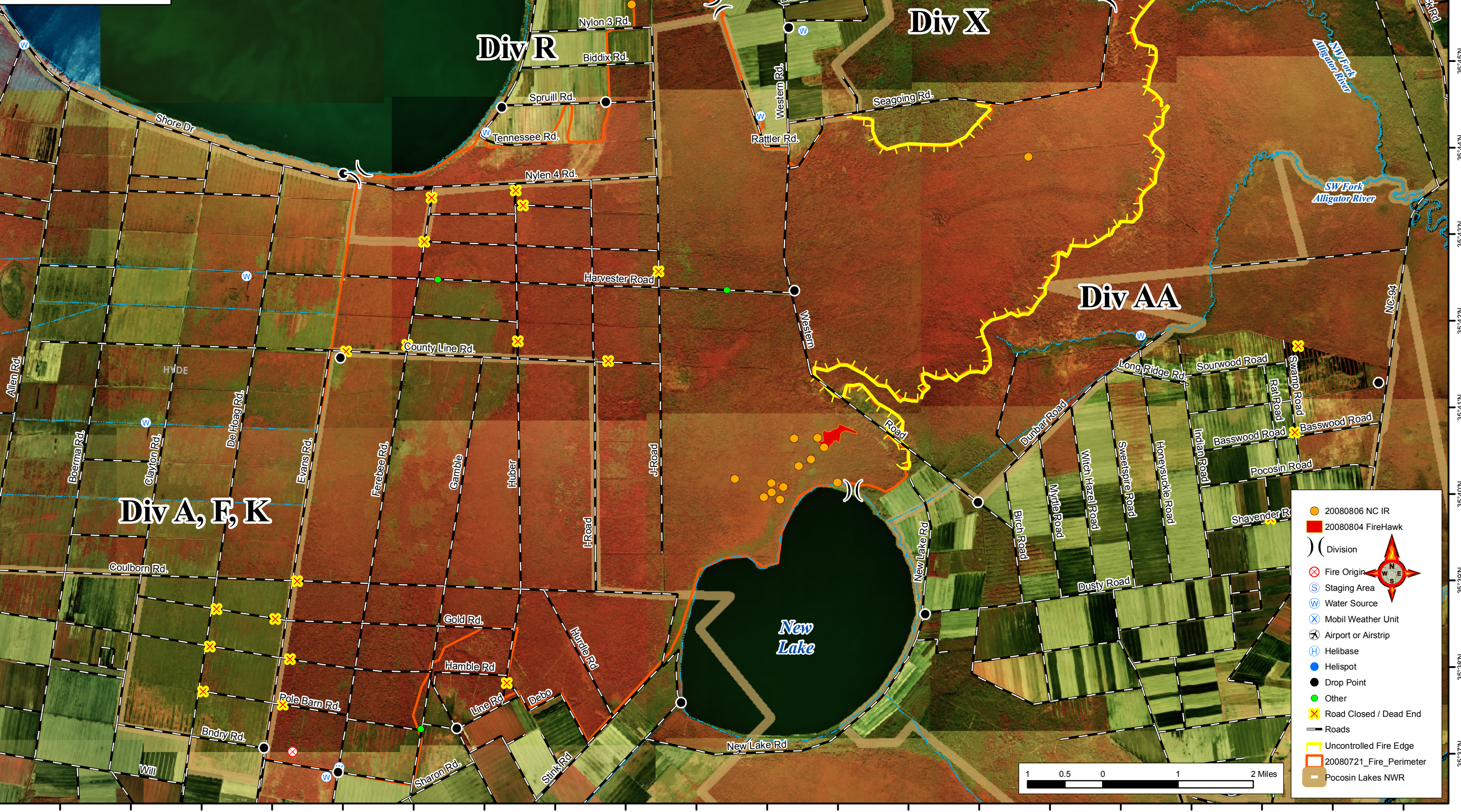
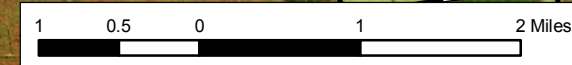
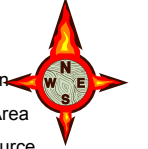
Div X

Div AA

Div A, F, K



- 20080806 NC IR
- 20080804 FireHawk
-) (Division
- ⊗ Fire Origin
- Ⓢ Staging Area
- Ⓜ Water Source
- ⊗ Mobil Weather Unit
- ✈ Airport or Airstrip
- Ⓜ Helibase
- Helispot
- Drop Point
- Other
- ⊗ Road Closed / Dead End
- Roads
- Uncontrolled Fire Edge
- 20080721_Fire_Perimeter
- Pocosin Lakes NWR



76°31'W 76°30'W 76°29'W 76°28'W 76°27'W 76°26'W 76°25'W 76°24'W 76°23'W 76°22'W 76°21'W 76°20'W 76°19'W 76°18'W 76°17'W 76°16'W 76°15'W 76°14'W 76°13'W 76°12'W