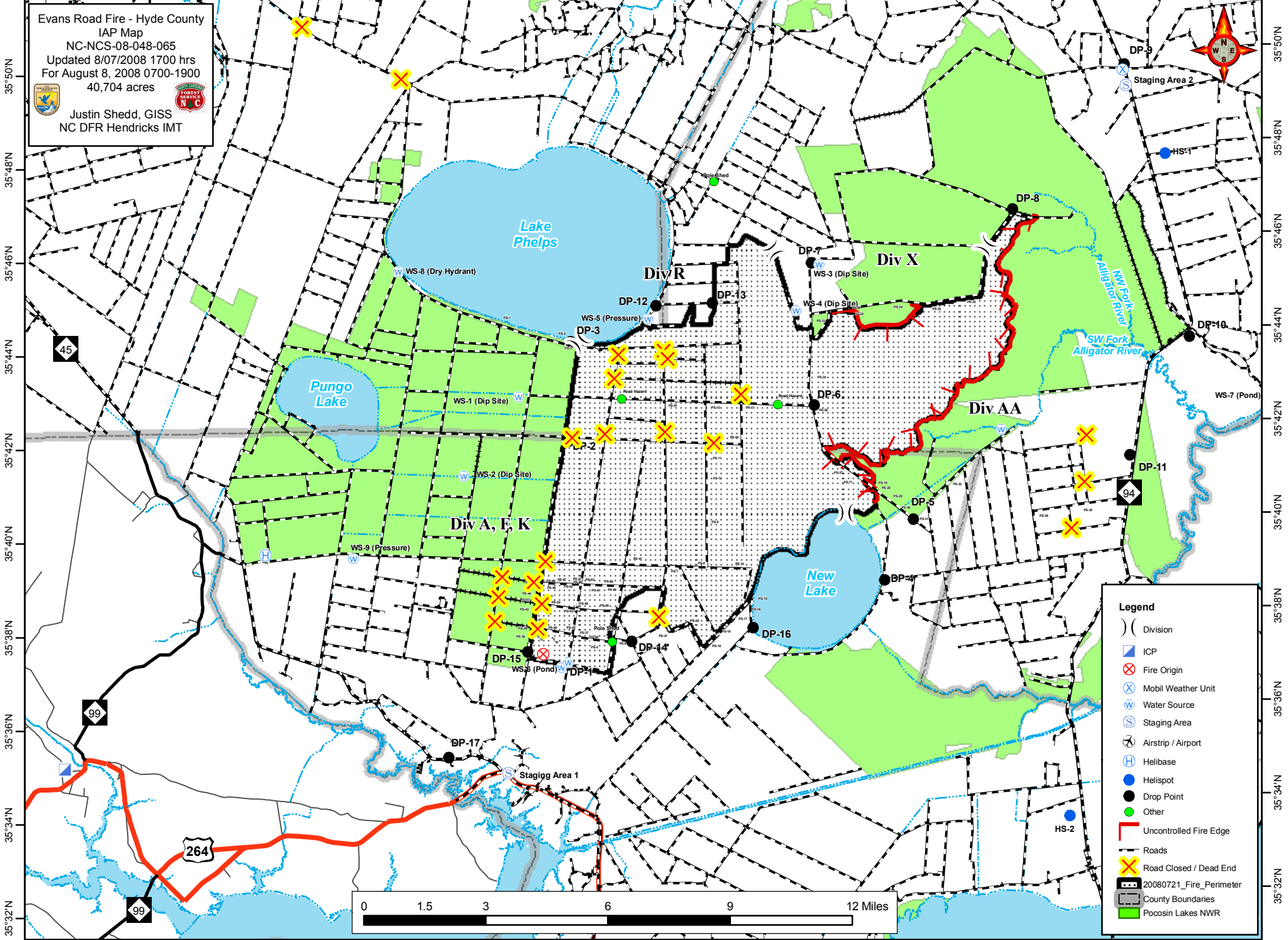


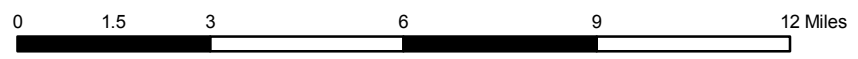
76°40'W 76°38'W 76°36'W 76°34'W 76°32'W 76°30'W 76°28'W 76°26'W 76°24'W 76°22'W 76°20'W 76°18'W 76°16'W 76°14'W 76°12'W 76°10'W

Evans Road Fire - Hyde County
IAP Map
NC-NCS-08-048-065
Updated 8/07/2008 1700 hrs
For August 8, 2008 0700-1900
40,704 acres
Justin Shedd, GISS
NC DFR Hendricks IMT



Legend

- () Division
- ▣ ICP
- ⊗ Fire Origin
- ⊗ Mobil Weather Unit
- ⊗ Water Source
- ⊗ Staging Area
- ⊗ Airstrip / Airport
- ⊗ Helibase
- ⊗ Helispot
- Drop Point
- Other
- Uncontrolled Fire Edge
- Roads
- ⊗ Road Closed / Dead End
- ▭ 20080721_Fire_Perimeter
- ▭ County Boundaries
- ▭ Pocosin Lakes NWR



76°40'W 76°38'W 76°36'W 76°34'W 76°32'W 76°30'W 76°28'W 76°26'W 76°24'W 76°22'W 76°20'W 76°18'W 76°16'W 76°14'W 76°12'W 76°10'W

35°50'N
35°48'N
35°46'N
35°44'N
35°42'N
35°40'N
35°38'N
35°36'N
35°34'N
35°32'N

35°50'N
35°48'N
35°46'N
35°44'N
35°42'N
35°40'N
35°38'N
35°36'N
35°34'N
35°32'N