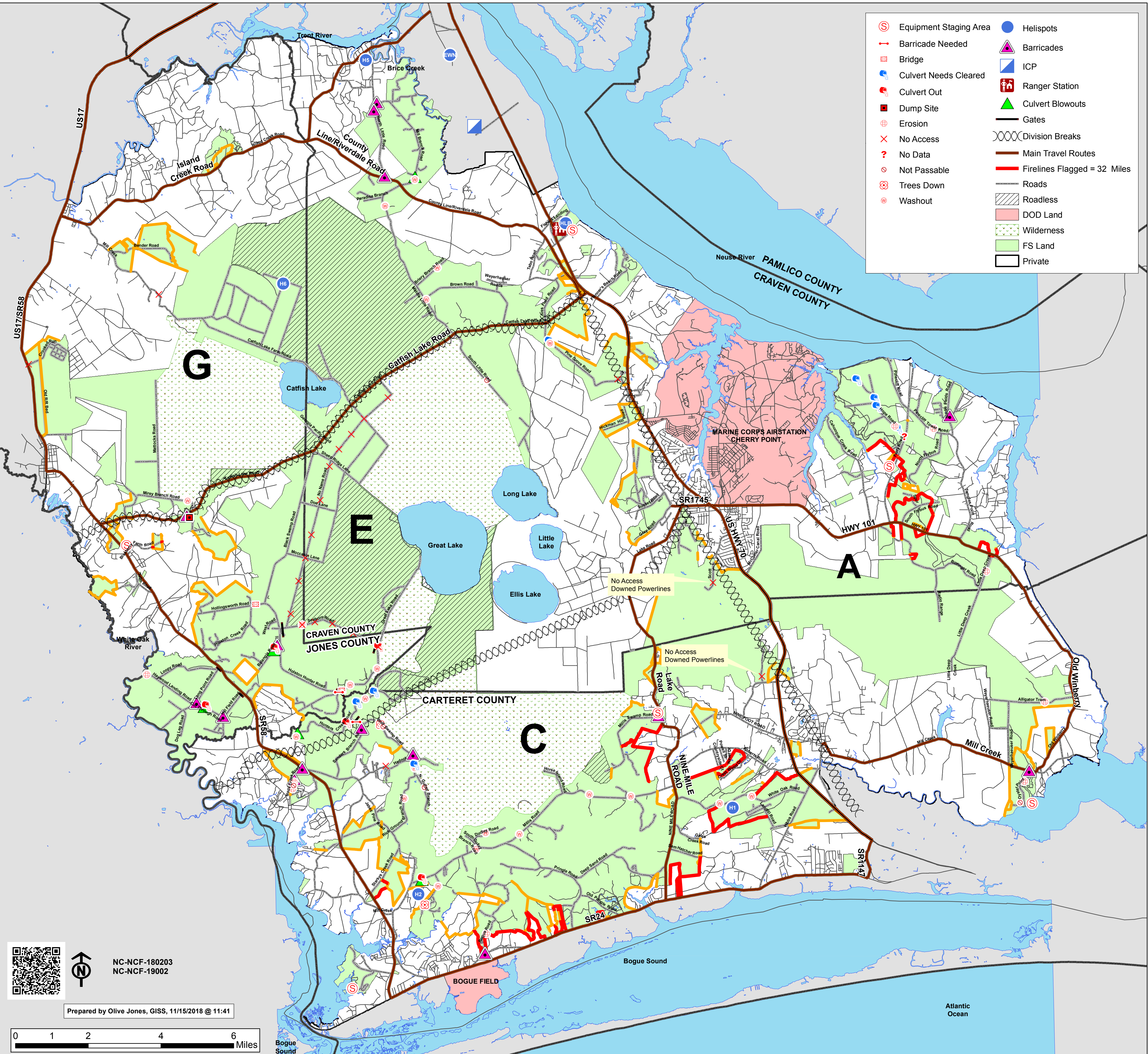




FIRELINE FLAGGING MAP

- | | |
|--------------------------|--------------------------------|
| Ⓢ Equipment Staging Area | ● Helispots |
| ➡ Barricade Needed | ▲ Barricades |
| ⌂ Bridge | ▢ ICP |
| ⚙️ Culvert Needs Cleared | 🚒 Ranger Station |
| ⚙️ Culvert Out | ▲ Culvert Blowouts |
| 🗑️ Dump Site | — Gates |
| ⊕ Erosion | ⋈ Division Breaks |
| ✕ No Access | — Main Travel Routes |
| ❓ No Data | — Firelines Flagged = 32 Miles |
| ⊘ Not Passable | — Roads |
| ⊗ Trees Down | ▨ Roadless |
| 🌊 Washout | 🔴 DOD Land |
| | ▨ Wilderness |
| | 🟢 FS Land |
| | ⬜ Private |



NC-NCF-180203
NC-NCF-19002

Prepared by Olive Jones, GISS, 11/15/2018 @ 11:41

0 1 2 4 6 Miles