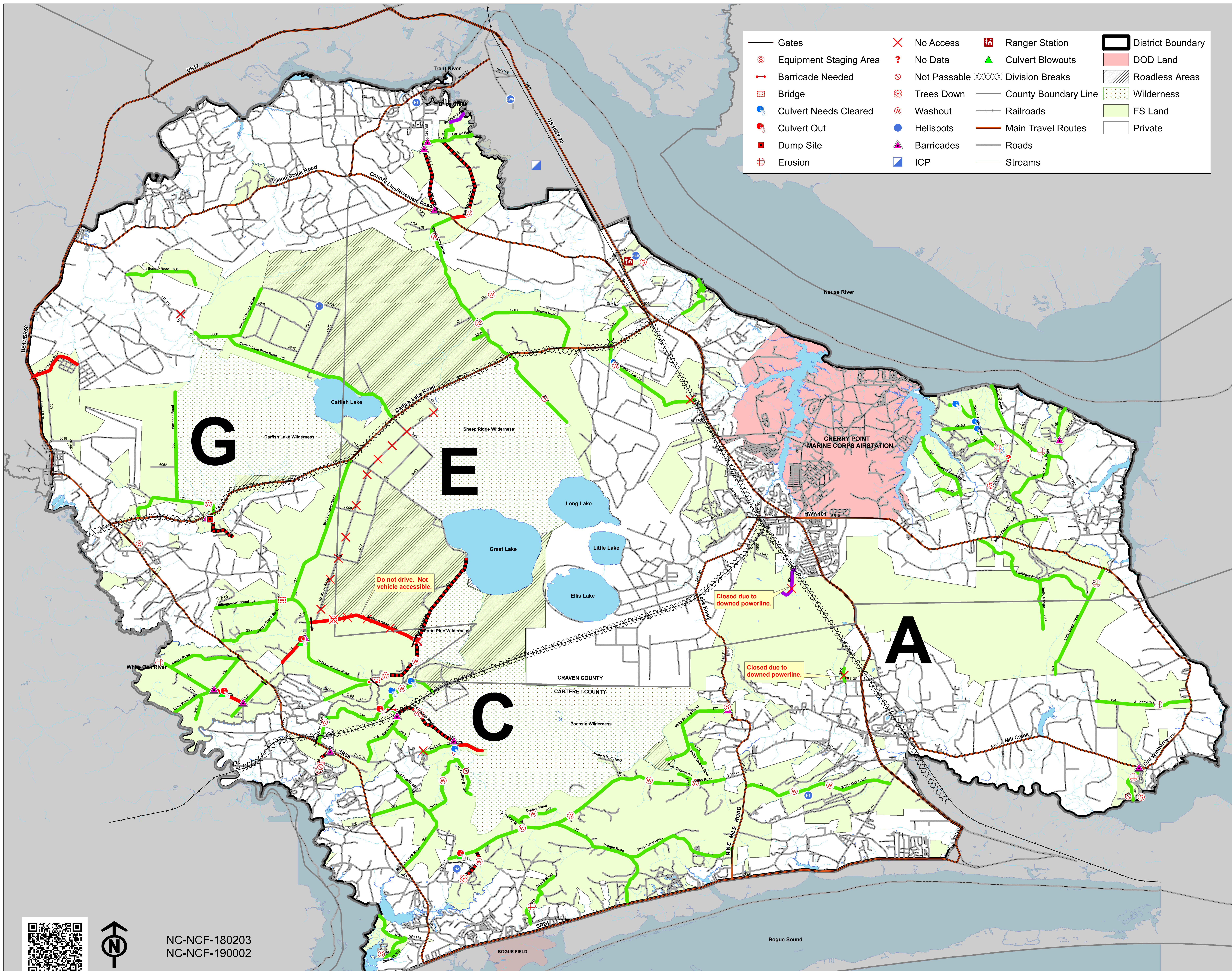




ROAD CLEARING OPERATIONS MAP

CROATAN NATIONAL FOREST
HURRICANE FLORENCE
11/02/2018

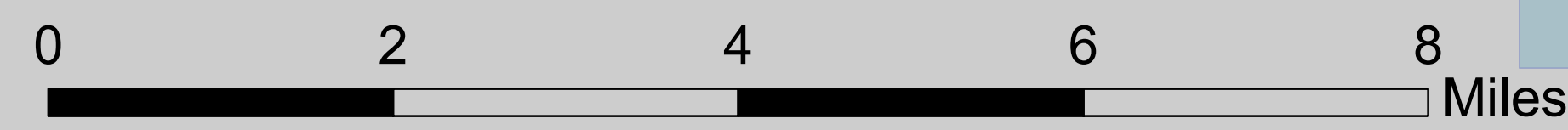


- Gates
- Equipment Staging Area
- Barricade Needed
- Bridge
- Culvert Needs Cleared
- Culvert Out
- Dump Site
- Erosion
- No Access
- No Data
- Not Passable
- Trees Down
- Washout
- Helispots
- Barricades
- ICP
- Ranger Station
- Culvert Blowouts
- Division Breaks
- County Boundary Line
- Railroads
- Main Travel Routes
- Roads
- Streams
- District Boundary
- DOD Land
- Roadless Areas
- Wilderness
- FS Land
- Private



NC-NCF-180203
NC-NCF-190002

Helispots Name	Lat	Long	Number	Type
Craven Regional Airport (EWN)	35 3.862'	-77 1.949'	EWN	Airport
Newport Landfill	34 45.706'	-76 54.183'	H1	Helispot
Whitehouse Forks	34 43.790'	-77 3.348'	H2	Helispot
Perrytown	35 3.776'	-77 4.402'	H5	Helispot
Impoundments	34 58.465'	-77 6.931'	H6	Helispot
Croatan Helibase	34 59.780'	-76 58.682'	HLB	HLB
Cattfish Lake Road	Entire Length			Road



Priority Road Status = 151.1 total miles

- Cleared to Standard = 127.9 miles
- Needs Cleared to Standard = 1.4 miles
- Long Term Closure - Cleared to Standard = 14.4 miles
- Long Term Closure - Not Cleared to Standard = 7.4 miles