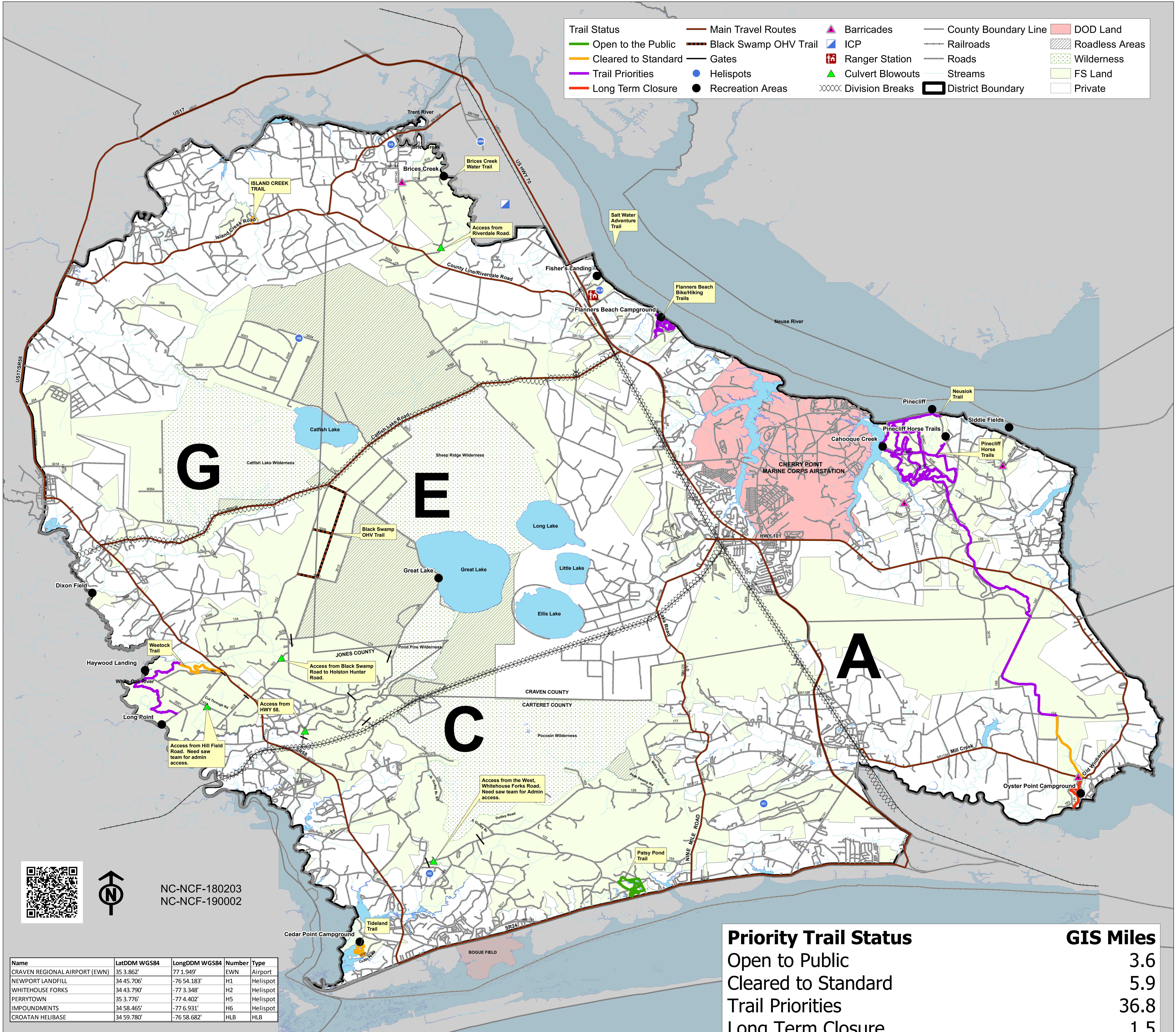




DISTRICT RECREATION AREAS AND TRAIL PLANNING MAP

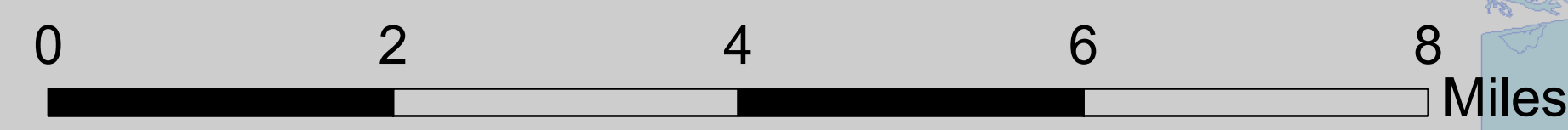
CROATAN NATIONAL FOREST
HURRICANE FLORENCE
10/19/2018

- | | | | | |
|---------------------|---------------------------|-------------------|-----------------------------|-----------------|
| Trail Status | Main Travel Routes | Barricades | County Boundary Line | DOD Land |
| Open to the Public | Black Swamp OHV Trail | ICP | Railroads | Roadless Areas |
| Cleared to Standard | Gates | Ranger Station | Roads | Wilderness |
| Trail Priorities | Helispots | Culvert Blowouts | Streams | FS Land |
| Long Term Closure | Recreation Areas | Division Breaks | District Boundary | Private |



NC-NCF-180203
NC-NCF-190002

Name	LatDDM WGS84	LongDDM WGS84	Number	Type
Craven Regional Airport (EWN)	35 3.862'	77 1.949'	EWN	Airport
Newport Landfill	34 45.706'	-76 54.183'	H1	Helispot
Whitehouse Forks	34 43.790'	-77 3.348'	H2	Helispot
Perrytown	35 3.776'	-77 4.402'	H5	Helispot
Impoundments	34 58.465'	-77 6.931'	H6	Helispot
Croatan Helibase	34 59.780'	-76 58.682'	HLB	HLB



Prepared by Matt Diskin, GIS, 10/18/2018 @ 1800

Priority Trail Status	GIS Miles
Open to Public	3.6
Cleared to Standard	5.9
Trail Priorities	36.8
Long Term Closure	1.5
Grand Total	47.9