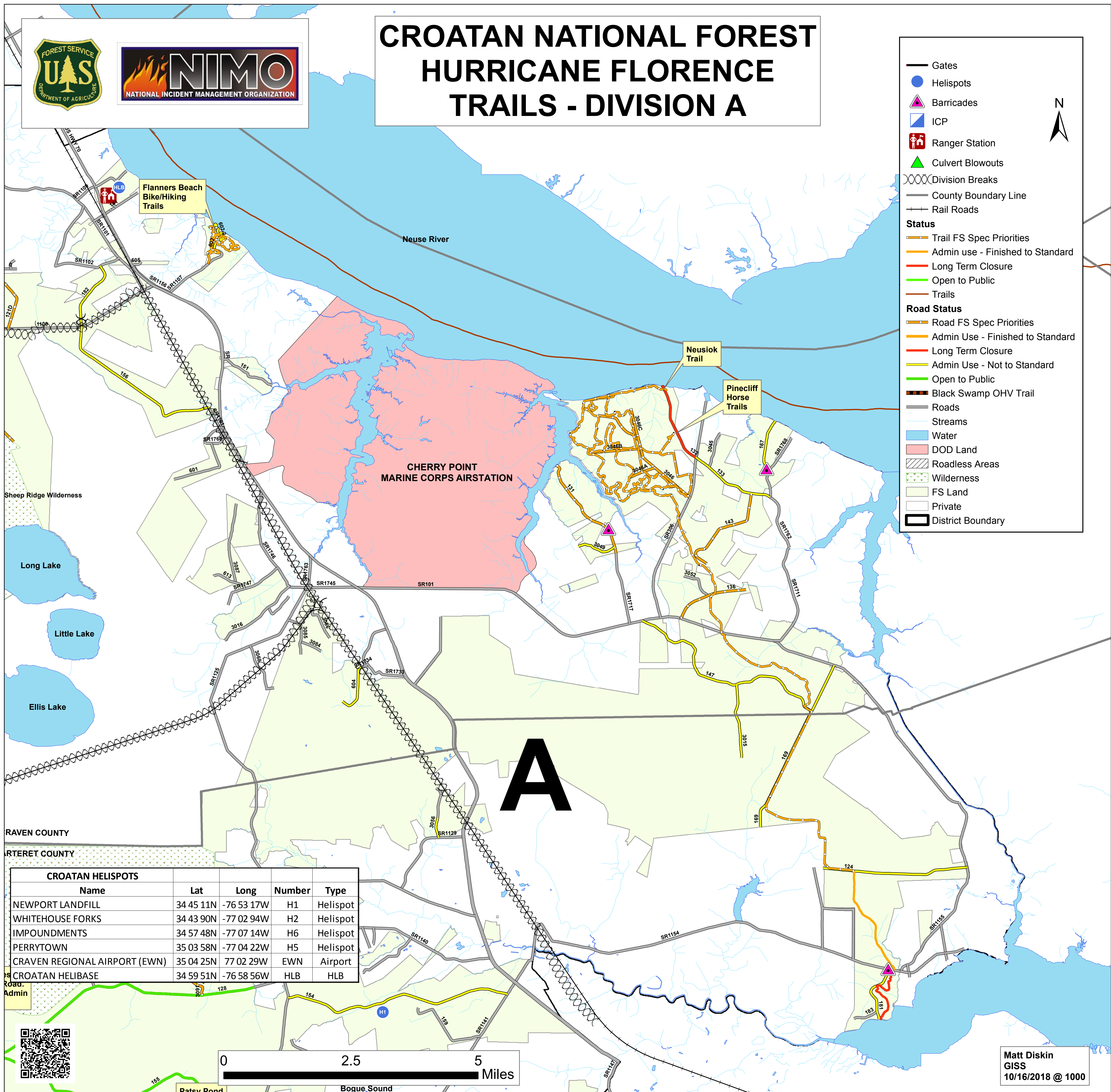




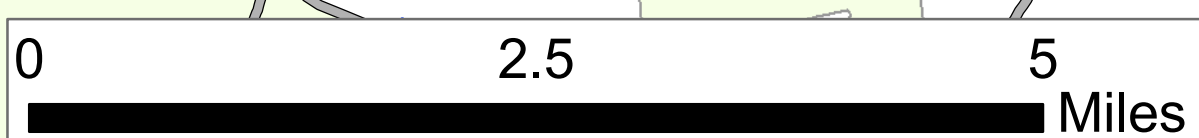
# CROATAN NATIONAL FOREST HURRICANE FLORENCE TRAILS - DIVISION A

- Gates
- Helispots
- Barricades
- ICP
- Ranger Station
- Culvert Blowouts
- Division Breaks
- County Boundary Line
- Rail Roads
- Status**
- Trail FS Spec Priorities
- Admin use - Finished to Standard
- Long Term Closure
- Open to Public
- Trails
- Road Status**
- Road FS Spec Priorities
- Admin Use - Finished to Standard
- Long Term Closure
- Admin Use - Not to Standard
- Open to Public
- Black Swamp OHV Trail
- Roads
- Streams
- Water
- DOD Land
- Roadless Areas
- Wilderness
- FS Land
- Private
- District Boundary



RAVEN COUNTY  
CHARTERET COUNTY

| CROATAN HELISPOTS             |           |            |        |          |
|-------------------------------|-----------|------------|--------|----------|
| Name                          | Lat       | Long       | Number | Type     |
| NEWPORT LANDFILL              | 34 45 11N | -76 53 17W | H1     | Helispot |
| WHITEHOUSE FORKS              | 34 43 90N | -77 02 94W | H2     | Helispot |
| IMPOUNDMENTS                  | 34 57 48N | -77 07 14W | H6     | Helispot |
| PERRYTOWN                     | 35 03 58N | -77 04 22W | H5     | Helispot |
| CRAVEN REGIONAL AIRPORT (EWN) | 35 04 25N | 77 02 29W  | EWN    | Airport  |
| CROATAN HELIBASE              | 34 59 51N | -76 58 56W | HLB    | HLB      |



Matt Diskin  
GISS  
10/16/2018 @ 1000