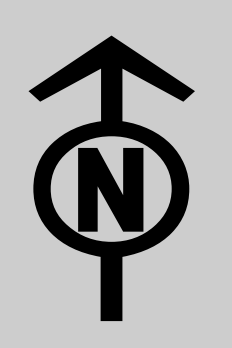
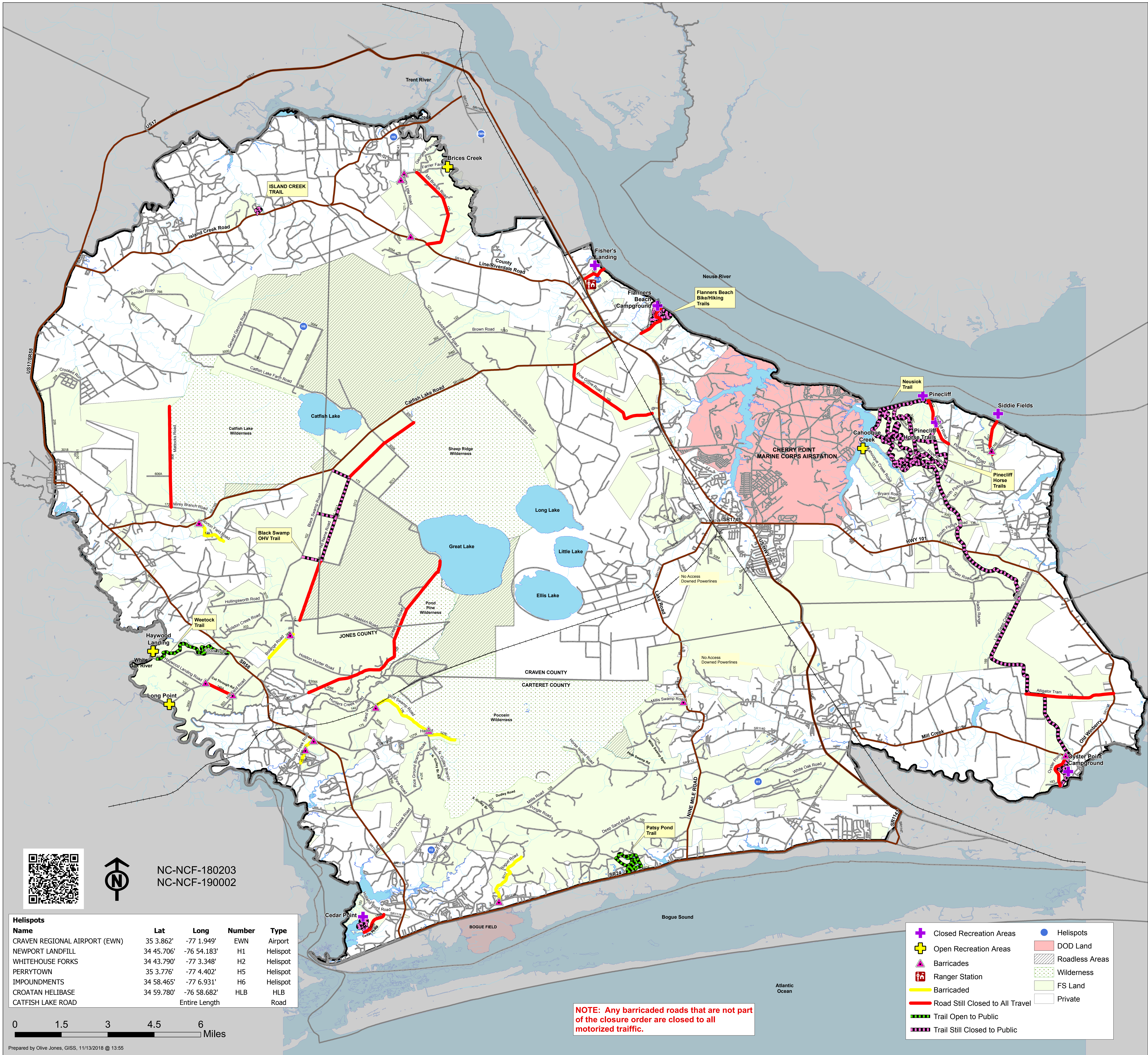




# Law Enforcement Map

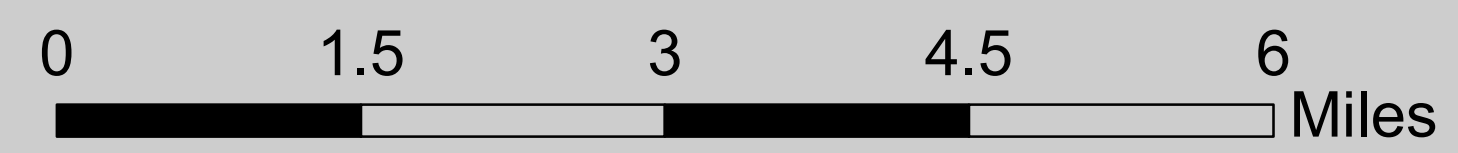
## Road, Trail, and Rec Site Closures

CROATAN NATIONAL FOREST  
HURRICANE FLORENCE  
11/13/2018



NC-NCF-180203  
NC-NCF-190002

Helispots Name	Lat	Long	Number	Type
CRAVEN REGIONAL AIRPORT (EWN)	35 3.862'	-77 1.949'	EWN	Airport
NEWPORT LANDFILL	34 45.706'	-76 54.183'	H1	Helispot
WHITEHOUSE FORKS	34 43.790'	-77 3.348'	H2	Helispot
PERRYTOWN	35 3.776'	-77 4.402'	H5	Helispot
IMPOUNDMENTS	34 58.465'	-77 6.931'	H6	Helispot
CROATAN HELIBASE	34 59.780'	-76 58.682'	HLB	HLB
CATFISH LAKE ROAD	Entire Length			Road



**NOTE: Any barricaded roads that are not part of the closure order are closed to all motorized traffic.**

Closed Recreation Areas	Helispots
Open Recreation Areas	DOD Land
Barricades	Roadless Areas
Ranger Station	Wilderness
Road Still Closed to All Travel	FS Land
Road Still Closed to All Motorized Traffic	Private
Trail Open to Public	
Trail Still Closed to Public	