

Juniper Road Fire

Incident Action Plan



NCNCS-011-071-048

Friday July 15, 2011

0800-1900

INCIDENT OBJECTIVES	1. Incident Name Juniper Road Fire	2. Date prepared: 7/14/2011	3. Time Prepared 1830
	4. Operational Period Day (0800- 1900 hrs) 7/15/2011 Friday		
5. General Control Objectives For The Incident			
<p>1. Ensure the safety of firefighters, emergency responders, and general public is our number one priority. We do this through:</p> <ul style="list-style-type: none"> - Strict adherence to the 10 Standard Fire Orders. - Mitigating all 18 Watch Out Situations. - Implementing LCES (Lookouts, Communications, Escape Routes, and Safety Zones). - Maintaining Situational Awareness. - Conducting Hazard / Risk Assessments throughout the day. - Conduct "tailgate" briefings on the line with an emphasis on personnel safety, health and welfare. <p>2. Protect private and cooperator infrastructure / resources by coordinating response and ensuring frequent communication with citizens, local fire departments, and assisting agencies.</p> <p>3. Keep the Juniper Road Fire contained to the following boundaries:</p> <ul style="list-style-type: none"> • East of Shaw Hwy • North of Live Hwy 210 • West of Hwy 17 and Hwy 50 • South of Old Maple Hill Road <p>4. Ensure cost effective and efficient incident response with consideration to values at risk. Ensure all CTR, Equip. Shift Tickets, Purchasing documentation, etc. is completed and sent to the ICP located at Bladen Primary School for processing.</p> <p>5. Evaluate rehabilitation needs. Focus is on mitigating safety hazards and negative impacts to water quality. Complete work as control operations allow.</p> <p>6. Evaluate resource and staffing needs daily to provide for a smooth and coordinated downsizing toward incident transition. <u>Begin Transition Plan preparation.</u></p>			
6. Weather Forecast For Period			
See the attached Weather / Fire Behavior Forcast			
7. General Safety Message			
See the attached Safety Message			
8. ATTACHEMENTS (X IF ATTACHED)			
<input type="checkbox"/> Organization List - ICS 203	<input checked="" type="checkbox"/> Medical Plan - ICS 206	<input checked="" type="checkbox"/> Safety message	_____
<input checked="" type="checkbox"/> Division Assignment Lists - ICS 204	<input checked="" type="checkbox"/> Incident Map	<input type="checkbox"/> _____	_____
<input type="checkbox"/> Communications Plan - ICS 205	<input checked="" type="checkbox"/> Air Ops Summary ICS 220	<input checked="" type="checkbox"/> Phone List	_____
9. Prepared By (Planning Section Chief)	10. Approved By (Incident Commander)		
Kevin Harvell	Mike Hendricks		

JUNIPER ROAD FIRE ORGANIZATION CHART / CONTACT LIST July 15, 2011

Name	Position	Phone
COMMAND		
Hendricks, Mike	ICT2	919-548-4190
Swartley, Bill	PIO2	919-218-3179
Suttles, Keith	LOFR	828-413-4441
Phillips, Harold	SOF2	828-507-8883
AGENCY ADMINISTRATORS		
Pate, Greg	NCFS	252-560-5018
AGENCY REPRESENTATIVES		
French, Vic	NCWRC	910-604-1017
Collins, Tom	Pender EM Director	910-470-4728
Sullivan, Woody	Pender EMS	910-470-4001
Bryson, Norman	Onslow EM Director	910-340-5033
Parker, Chris	USMC Fire	910-376-7100
Baker, Keith	The Nature Conservancy & NC Parks	919-618-7889
Haas, Doug	NCDEM-East Coord.	910-604-2111
PLANS		
Harvell, Kevin	PSC2	336-242-7428
Query, Justin	RESL	828-446-1315
Cheek, Michael	SITL	828-231-2691
Brown, Lloyd	FBAN	910-874-5348
Howell, Tim	FBAN (t)	828-508-2386
Jones, David	GISS	
Duncan, Trent	FOBS	828-450-2315
Hurdle, Teresa	FOBS	252-331-3152
Rohr, Hans	FOBS	910-874-2971
Chesnutt, Michael	DMOB	910-876-1505
McCall, Jonathan	SCKN	828-507-0970

Emergency Operations Centers
 910-259-1210 Pender County EOC
 910-347-4270 Onslow County EOC
 910-451-3520 Camp LeJeune EOC

Name	Position	Phone
FINANCE		
Lott, Annie	FSC2	919-824-6633
Head, Sheila	PROC	
Overman, Chris	COST	919-902-1842
Lawrence, Tracy	COST (t)	252-333-5626
Rose, Gina	TIME	252-325-0329
Sidhu, Luke	CTSP (t)	919-909-5338
OPERATIONS		
Ambrose, Jonathan	OSC2	910-512-5822
Bozzo, Michael	OSC2 (t)	803-667-1061
Money, Keith	DIVS F, G, H	336-247-1681
Cross, Walter	DIVS K	336-318-5215
AIR OPERATIONS		
Maguire, Mike	AOBD	828-775-1871
Noble, Vean	HLCO	907-252-5318
Dott, Tracy	HMGB at Wallace	805-722-0170
Sexton, Brian	HEB2	805-350-3717
LOGISTICS		
Harris, Roger	LSC2	828-329-1607
Jim Aldridge	FACL/FDUL	919-636-2471
Mace, Paul	RADO	828-413-2515
Ruble, Dick	COML	919-410-9725
Sherwood, Woody	GSUL/MECH	252-337-4835
Rogers, Frank	MEDL	828-507-9123
Stanley, Jeff	EQPM	910-879-8288
Fraizer, Bernard	MECH	803-347-9001

Juniper Rd Fire Staging Address:
5655 NC Hwy. 53 E.
Burgaw, NC 28425

Staging Phone
 910-259-4034
Staging Fax
 910-259-6790

ICP Phones

Information/Safety	910-588-4971
Operations	910-588-4714
Communications	910-588-4699
ICP Fax	910-588-4211
Supply	910-588-4485
Medical	910-588-4483
Plans	910-588-4034
Finance	910-588-4796
Conf./Planning Room	910-588-4751

HEALTH AND SAFETY MESSAGE

INCIDENT: Simmons and Juniper Road Fire

DATE: 7/15/11

TIME: 0730-1900

Major Hazards and Risks:

SNAGS-Stay out of area, essential fire line personnel only, look at root system before working/parking. IRPG pg. 20.

DRIVING- Drive defensively. Backing accidents are common with this type incident. Use spotters when backing and blow your horn to alert personnel of your actions. Use headlights on dusty roads. Observe travel restrictions in Demob plan. Safe travel home is part of the assignment.

SCHOOL BUSES- Year- round schools are back in session as well as some summer school programs. Be alert for stopped school buses and children near the highway. Be especially careful traveling around ICP as summer program has started.

Personal Hygiene- Practicing good hygiene will prevent the spread of illness and disease. Washing stations will be set up at various places at the staging area. Use them before eating, and after visits to the rest room.

AIR DROPS- Be alert. Stay out of drop area. Both the approach and departure routes are dangerous to ground personnel. Manage helicopter dip sites to minimize exposure for ground forces. Use Air to Ground channel.

FIRE BEHAVIOR – Maintain situational awareness, follow 10 Standard Orders, recognize / mitigate the 18 Watch Out Situations, and apply LCES. Know the fire weather forecast. Monitor conditions for change.

HYDRATION/HEAT STRESS – Heat index will be high again today Be sure to drink plenty of fluids (before you get thirsty), and take frequent breaks. Watch your co-workers for heat related symptoms.

ENVIRONMENTAL HAZARDS – Watch for and stay away from rattlesnakes, fire ants and wildlife. Keep all foods secured. Bring all trash off the line. Use insect repellent for ticks. Report tick bites to Medical Unit Leader.

Accidents: Contact your supervisor and inform him/her. Follow emergency procedures at bottom of medical plan.

Lightning Activity Level (LAL) 1 through 6. Page 76 in IRPG!

Heat Index Calculations !

Simmons Rd

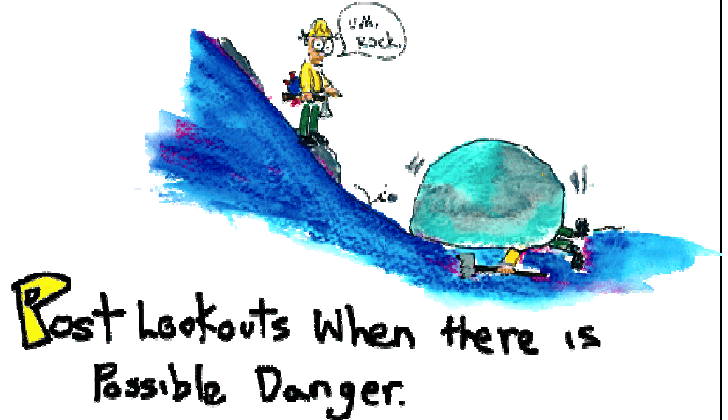
Temp 86 RH 46%

Heat Index = 87

Juniper Rd

Temp 85 RH 51%

Heat Index = 87



Fire Behavior Forecast – Juniper Road

Time and Date Forecast Issued: 1700hrs Thursday 7/14/11
 For: Friday 7/15/2011

Forecast Number 24
 Tim Howell FBAN (t)

Weather Summary: THE SEABREEZE BOUNDARY WILL TRIGGER A FEW SHOWERS...AND POSSIBLY AN ISOLATED THUNDERSTORM LATE THIS AFTERNOON. HOWEVER...SHOWERS AND STORMS WILL MOST LIKELY DEVELOP JUST SOUTH AND WEST OF THE FIRE...AND MOVE AWAY FROM THE FIRE SITE. OTHERWISE...HIGH PRESSURE NORTH OF THE REGION WILL MAINTAIN AN EASTERLY FLOW THROUGH THE WEEKEND...WITH BELOW NORMAL TEMPERATURES AND MODERATE HUMIDITY LEVELS...BUT NO SUBSTANTIAL RAINFALL. BERMUDA HIGH PRESSURE WILL REASSERT ITSELF EARLY NEXT WEEK...WITH HOT AND HUMID CONDITIONS RETURNING.

Today will be mostly sunny with little to no chance of precip. Max Temp 85 degrees Min RH 51% winds east 8 to 10 mph. Expect gusty and erratic winds near thunderstorms.

Time	0800	1000	1200	1400	1600
Temp	72	78	82	84	84
RH	84	67	56	52	51
Wind	NE6G15	E7G15	E8G15	E8G15	E8G15

Local Thresholds – Watch Out (Fire Danger Pocket Card) Wind Speed > 15mph RH < 25% Temp >90

General Fire Behavior

1.5 inches to .4 inches of rain fell across the fire Wednesday evening. Smoldering fire was observed across sections of the fire. The moisture has kept the surface spread and flare ups down. Increased winds will continue to cause fire weakened trees to fall. Needle/leaf cast should continued to be monitored due, the mostly sunny days and high winds will start to dry the fuels out again, especially on the unsheltered sand ridges.

Specific Fire Behavior

Stay heads up for the early NE winds on the southern divisions.

Divisions Kilo, Hotel, Golf, Foxtrot, and sections of November have shown the most heat therefore will be the first to dry out after the rains. Fire behavior in these divisions will continue to increase. The north and east winds will put pressure on divisions Foxtrot, Golf & Hotel. Interior reburn and torching may be seen.

Fuel Model	ROS Chains/Hr	Flame Length	Spot Distance Feet	PIG
Sh9 very high load humid climate shrub	21-26	10-15	500	36%
Tu3 timber grass shrub	12-18	4-8	500	36%

Back Island Predicted NFDRS Indices for Today for Fuel Model O

1 hour fuel moisture	10 hour fuel moisture	100 hour fuel moisture	1000 fuel moisture	BI	IC	ERC	KBDI
9% Up 1 (24 Hr trend)	11% Same (24 Hr trend)	14% Up 2 (24 Hr trend)	18% Up 1 (24 Hr trend)	76 Up 11 (24 Hr trend)	17 Up 6 (24 Hr trend)	42 Down 1 (24 Hr tend)	620 Down 113 (24 Hr trend)

Controllability- Indirect attack should be used if fires become established. Aircraft should always be utilized in the containment effort. Direct attack with heavy equipment in the sand ridges can be accomplished if winds are not gusting.

DIVISION ASSIGNMENT LIST		1. Incident number NC-NCS-11-071-048		2. Division/Group Division F, G, & H (Pg. 1 of 3)			
3. Incident Name JUNIPER ROAD FIRE			4. Operational Period Date: 7/15/11 Time: 0800-1900				
5. Operations Personnel							
Operations Chief		Jonathan Ambrose		Division Supervisor		Keith Money	
Operations Chief - Planning				Air Attack Supervisor			
6. Resources Assigned this Period							
Strike Team/Task Force/ Resource Designator	Personnel		Resource Number	Last Work Day	Number Persons	Drop Off Time	Cell Phone #
ES6 R3 #2			E-222	7/23	9	0800	
STEN 12-41	Brian Rogers						
ENG6 12-76	Crouse/Causby						
ENG6 12-65	Thompson/Brasington						
ENG6 12-70	Cranfill/Icard						
ENG6 5-61	Brown/Gatlin						
EMTP Pender SAR1	David Warren				1	0800	
7. Control Operations							
<ul style="list-style-type: none"> Construct bladed lin in areas where able and needed. Patrol, hold and monitor all Divisions F,G,H down Lodge Road to the wedge. Continue to use pumps and engines to cool flare-up's and prevent ground fire from undermining New Road. 							
8. Special Instructions							
<ul style="list-style-type: none"> Have LCES in place for all operations; confirm LCES with division supervisor by 1000hr. Avoid areas with undermined trees (snags). Mitigate snag hazards. Share resources with adjacent divisions. All aviation resources must be requested through Field Ops. DIVS monitor both repeater channels 9, 11, and Air to Ground 8. Brief Division on LCES in use of Powerline Utilize Lodge Road in the Black and New as safety zones. 							
9. Division/Group Communication Summary							
Function	Frequency	System	Channel	Function	Frequency	System	Channel
Operation and Command West	Rx 151.220 Tone 136.5 Tx 159.345 Tone 131.8	King NIFC	Group 14 INC 9	In District	Rx 151.280 Tone 131.8 Tx 159.360 Tone 131.8	King NIFC	D8 Delco
Operation and Command East	Rx 151.175 Tone 136.5 Tx 159.315 Tone 131.8	King NIFC	Group 14 INC 11	Air to Ground	Rx 171.575 Tone 131.8	King NIFC	Group 14 INC 8
Tactical Div/Group	Rx 151.310 Tone 136.5	King NIFC	Group 14 INC 3				
Prepared by (Resource Unit Leader) Jonathan McCall		Approved by (Planning Section Chief) Kevin Harvell		Date 7/14/11		Time 1830	

DIVISION ASSIGNMENT LIST		1. Incident number NC-NCS-11-071-048		2. Division/Group Division F, G, & H (Pg. 2 of 3)			
3. Incident Name JUNIPER ROAD FIRE			4. Operational Period Date: 7/15/11 Time: 0800-1900				
5. Operations Personnel							
Operations Chief		Jonathan Ambrose		Division Supervisor		Keith Money	
Operations Chief - Planning				Air Attack Supervisor			
6. Resources Assigned this Period							
Strike Team/Task Force/ Resource Designator	Personnel	Resource Number	Last Work Day	Number Persons	Drop Off Time	Cell Phone #	
ES6 VA #1		E-230	7/25	11	0800		
STEN	William Perry						
ENG6 Virginia-601	K. Painter / D. Tyre						
ENG6 Virginia-602	G. Hilliard / B. Marston						
ENG6 Virginia-603	E. Filep / T. Kready						
ENG6 Virginia-604	C. Stover / C. Cahoon						
ENG6 Virginia-605	B. Ledford / D. Morris						
WAT3 2-53	Drew Hinnent	O-96, E-94	7/16	1	0800		
WAT3 2-19		E-93			0800		
DRCL	David Gardner	E-237	7/27	1	0800		
7. Control Operations							
<ul style="list-style-type: none"> Construct bladed lin in areas where able and needed. Patrol, hold and monitor all Divisions F,G,H down Lodge Road to the wedge. Continue to use pumps and engines to cool flare-up's and prevent ground fire from undermining New Road. 							
8. Special Instructions							
<ul style="list-style-type: none"> Have LCES in place for all operations; confirm LCES with division supervisor by 1000hr. Avoid areas with undermined trees (snags). Mitigate snag hazards. Share resources with adjacent divisions. All aviation resources must be requested through Field Ops. DIVS monitor both repeater channels 9, 11, and Air to Ground 8. Brief Division on LCES in use of Powerline Utilize Lodge Road in the Black and New as safety zones. 							
9. Division/Group Communication Summary							
Function	Frequency	System	Channel	Function	Frequency	System	Channel
Operation and Command West	Rx 151.220 Tone 136.5 Tx 159.345 Tone 131.8	King NIFC	Group 14 INC 9	In District	Rx 151.280 Tone 131.8 Tx 159.360 Tone 131.8	King NIFC	D8 Delco
Operation and Command East	Rx 151.175 Tone 136.5 Tx 159.315 Tone 131.8	King NIFC	Group 14 INC 11	Air to Ground	Rx 171.575 Tone 131.8	King NIFC	Group 14 INC 8
Tactical Div/Group	Rx 151.310 Tone 136.5	King NIFC	Group 14 INC 3				
Prepared by (Resource Unit Leader) Jonathan McCall		Approved by (Planning Section Chief) Kevin Harvell		Date 7/14/11		Time 1830	

DIVISION ASSIGNMENT LIST		1. Incident number NC-NCS-11-071-048		2. Division/Group Division F, G, & H (Pg. 3 of 3)				
3. Incident Name JUNIPER ROAD FIRE			4. Operational Period Date: 7/15/11 Time: 0800-1900					
5. Operations Personnel								
Operations Chief		Jonathan Ambrose		Division Supervisor		Keith Money		
Operations Chief - Planning				Air Attack Supervisor				
6. Resources Assigned this Period								
Strike Team/Task Force/ Resource Designator		Personnel		Resource Number	Last Work Day	Number Persons	Drop Off Time	Cell Phone #
TPS2 D7 ST #2				E-181	7/19	4	0800	
STPL		Scott Sheets						
TPL2 7x1 Cat D4H		C. Scott / S. Scott						
TPL2 7x71 Cat D5H		T. Revel						
TPS2 D8 ST				E-235	7/24	5	0800	
STPL		Kyle Powell						
TPL2 8x23 D5 Cat		D. Bryan / J. Deavers						
TPL2 8x42 JD750J		B. Godwin / J. Parker						
7. Control Operations								
<ul style="list-style-type: none"> Construct bladed lin in areas where able and needed. Patrol, hold and monitor all Divisions F,G,H down Lodge Road to the wedge. Continue to use pumps and engines to cool flare-up's and prevent ground fire from undermining New Road. 								
8. Special Instructions								
<ul style="list-style-type: none"> Have LCES in place for all operations; confirm LCES with division supervisor by 1000hr. Avoid areas with undermined trees (snags). Mitigate snag hazards. Share resources with adjacent divisions. All aviation resources must be requested through Field Ops. DIVS monitor both repeater channels 9, 11, and Air to Ground 8. Brief Division on LCES in use of Powerline Utilize Lodge Road in the Black and New as safety zones. 								
9. Division/Group Communication Summary								
Function	Frequency	System	Channel	Function	Frequency	System	Channel	
Operation and Command West	Rx 151.220 Tone 136.5 Tx 159.345 Tone 131.8	King NIFC	Group 14 INC 9	In District	Rx 151.280 Tone 131.8 Tx 159.360 Tone 131.8	King NIFC	D8 Delco	
Operation and Command East	Rx 151.175 Tone 136.5 Tx 159.315 Tone 131.8	King NIFC	Group 14 INC 11	Air to Ground	Rx 171.575 Tone 131.8	King NIFC	Group 14 INC 8	
Tactical Div/Group	Rx 151.310 Tone 136.5	King NIFC	Group 14 INC 3					
Prepared by (Resource Unit Leader) Jonathan McCall		Approved by (Planning Section Chief) Kevin Harvell			Date 7/14/11		Time 1830	

DIVISION ASSIGNMENT LIST			1. Incident number NC-NCS-11-071-048		2. Division/Group Division K,M,N,O			
3. Incident Name JUNIPER ROAD FIRE			4. Operational Period Date: 7/15/11 Time: 0800-1900					
5. Operations Personnel								
Operations Chief		Jonathan Ambrose		Division Supervisor				
Operations Chief - Planning				Air Attack Supervisor				
6. Resources Assigned this Period								
Strike Team/Task Force/ Resource Designator		Personnel		Resource Number	Last Work Day	Number Persons	Drop Off Time	Cell Phone #
ENG6		Jason Walker		E-238	7/27	1	0800	
7. Control Operations								
<ul style="list-style-type: none"> Patrol & monitor fire along K,M,N,O and report concerns to Field Ops. Keep detailed 214 of any findings / concerns. 								
8. Special Instructions								
<ul style="list-style-type: none"> Have LCES in place for all operations; confirm LCES with division supervisor by 1000hr. Avoid areas with undermined trees (snags). Mitigate snag hazards. All aviation resources must be requested through Field Ops. ENG6 monitor both repeater channels 9, 11, and Air to Ground 8. 								
9. Division/Group Communication Summary								
Function	Frequency	System	Channel	Function	Frequency	System	Channel	
Operation and Command East	Rx 151.175 Tone 136.5 Tx 159.315 Tone 131.8	King NIFC	Group 14 INC 11	In District	Rx 151.280 tone 131.8 Tx 159.360 tone 131.8	King NIFC	D8 Delco	
Tactical Div/Group	Rx 151.400 Tone 136.50	King NIFC	Group 14 INC 1	Air to Ground	Rx 171.575 Tone 131.8	King NIFC	Group 14 INC 8	
Prepared by (Resource Unit Leader) Jonathan McCall		Approved by (Planning Section Chief) Kevin Harvell		Date 7/14/11		Time 1830		

INCIDENT RADIO COMMUNICATIONS PLAN				1. Incident Name JUNIPER ROAD FIRE	2. Date Time Prepared 7/14/2011	3. Operational Period Date/Time 7/15/2011	
MODE: W=WIDE, N=NARROW							
System/cache	CH #	Function	Frequency	Tone	Mode	Assignment	Remarks
NCFS	INC 1	TAC	RX: 151.4000	136.5	W	DIV N	
			TX: 151.4000	136.5			
NCFS	INC 2	TAC	RX: 151.4600	136.5	W	Rehab Group	
			TX: 151.4600	136.5			
NCFS	INC 3	TAC	RX: 151.3100	136.5	W	DIVS. F, G, H	
			TX: 151.3100	136.5			
NCFS	INC 8	AIR TO GROUND	RX: 171.5750	131.8	N	ALL DIVS.	
			TX: 171.5750	131.8			
NCFS	INC 9	COMMAND	RX: 151.2200	136.5	W	OPERATIONS & COMMAND	Western side of fire.
			TX: 159.3450	131.8			
NCFS	INC 11	COMMAND	RX: 151.1750	136.5	W	OPERATIONS & COMMAND	Eastern side of fire.
			TX: 159.3150	131.8			
5. Prepared by (Communications Unit) DICK RUBLE / COML							

Note: This is not a standard NWCG ICS205 Form

MEDICAL PLAN	1. Incident Name Juniper Road	2. Date Prepared 7/14/11	3. Time Prepared 1200	4. Operational Period 7/15/11 DAY/NIGHT	
5. Incident Medical Aid Station					
Medical Aid Stations	Location			Paramedics Yes No	
Line EMT	Staging on fire lines			X	
6. Transportation					
Name	Address	Phone	Paramedics Yes No		
Pender Co. EMS	Rocky Point, NC	911 / 910-675-9198	X		
Onslow Co. EMS	Jacksonville, NC	910-455-9119	X		
First Med Non-Emergency Transp.	Wilmington	910-290-2352		X	
Air Link	Wilmington Airport (ILM)	800-282-5465	X		
B. Incident Ambulances					
Name	Location			Paramedics Yes No	
Pender SAR 1	Scanning Command Channels 9 & 11			X	
7. Hospitals					
Name	Address	Travel Time Air Ground	Phone	Helipad Yes No	Burn Center Yes No
Pender Memorial	507 E. Freemont St. Burgaw	5 Min 15 Min	910-259-5451	X	X
Onslow Memorial	317 Western BLVD. Jacksonville NC	20 Min 45Min	910-577-2240	X	X
New Hanover Memorial <u>LEVEL 2 TRAUMA</u>	2243 S. 17 St. Wilmington	15 Min 45 Min	910-343-7000 910-815-5155	X	X
UNC Chapel Hill <u>BURN CENTER</u>	101 Manning Dr. Chapel Hill NC 27514 919-966-3693	45 Min 1.5 Hrs	919-966-3571	X	X
8. Medical Emergency Procedures					
DO NOT use patients name or call sign during emergency. (Only Nature Of Injury, Number Of Injured, & Minor Or Critical).					
*****FOR LIFE THREATENING MEDICAL EMERGENCIES*****					
Step 1. Division Supervisor – Will announce “All Units Hold Traffic For Medical Emergency”					
Step 2. Division Supervisor – Will Relay The Following Information to Communications: Division / Nature Of Injury Or illness / Number Of Injured Or ill / Patients Location LINE EMT’S WILL BE ENROUTE TO STABILIZE PATIENT					
Step 3. Communications – Will Contact 911 Direct and relay information.					
Step 4. Communications – Will Then Contact Communications To Advise Medical Unit Leader, Safety Officer, And Operations Chief Of The Medical Emergency					
Step 5. Medical Unit Leader – Will Take Command Of Medical Emergency Operations And Radio Along With the Ops Chief, Air Ops, And Safety Officer.					
Step 6. Division Supervisor & Patient Unit Leader – Should Record Incident On 214 ASAP.					
*****FOR NON-LIFE THREATENING EMERGENCIES*****					
Step 1. Patient - Will Advise Unit Leader					
Step 2. Patient - Will Receive Care					
Step 3. Unit Leader/Patient - Will Advise Division Supervisor					
Step 4. Div. Sup/Unit Leader– Will Document Incident On 214					
Step 5. Div. Sup. /Patient’s Unit Leader - Will Advise The Medical Unit Leader At The End Of Each Shift Of ANY Illness or Injury And Of ANY Medical Care Given					
****NIGHT SHIFT****					
Division Sup. Contact EOC Direct by 911 or Viper Radio and provide the following info: Nature Of Injury Or illness / Number Of Injured Or ill / Patients Location					
• Record on 214 ASAP and contact MEDL by Phone (828-507-9123)					
MEDL (T) Frank Rogers 828-507-9123 / SOF2 Harold Phillips					
Prepared by (Medical Unit Leader) Frank Rogers MEDL (T)			10. Reviewed by (Safety Officer) Harold Phillips SOF2		

AIR OPERATIONS SUMMARY		PREPARED BY: Hugh Carson, ASGS		PREPARED DATE/TIME: 7/14/2011 1800									
1. INCIDENT NAME		2. OPERATIONAL PERIOD DATE: 7/15/2011		SHIFT START TIME: 0800									
Simmons Rd / Juniper Rd		HELICOPTERS ON THE GROUND AT 20:00		SHIFT END TIME: 2000									
3. REMARKS (Safety Notes, Hazards, Air Operations Special Equipment, etc.)		SUNRISE: 0613		SUNSET: 2027									
<p>4. MEDEVAC A/C:</p> <p>Air Link @ New Hanover Regional Medical Center –Wilmington 800-282-5465 Serving Pender County</p> <p>UNC Carolina Air Care @ Cape Fear Valley Hospital – Fayetteville 800-247-6264 Serving Bladen County</p>		5. TFR:		Juniper Road (1/2447) 3000' MSL Simmons Road (1/3235) 4500' MSL (A-120)									
<p>“It takes everyone to say yes, only one to say no for all missions.”</p> <p>Establish positive communications with assigned ground contacts</p> <p>SQUAWK 1255 and ensure warning lights are on.</p> <p>Both fixed and rotary wing aircraft may be in incident airspace and/or enroute to/from FW/RW bases.</p> <p>Power Lines, military aircraft and smoky conditions are all possible hazards.</p> <p>Prior To Descent To Low-Level (<500' AGL), A High Level Recon Is Mandatory</p> <p>AIRCRAFT are ordered via Turnbull Helibase on A/G or to AOB on BRAVO3 or cell</p>													
AVIATION LOCATIONS													
<ul style="list-style-type: none"> Live Oak (ICP) Helispot (Simmons Rd Incident) N34 50.003' W78 43.19' Turnbull Helibase (Simmons Rd) near E-town N34 41.20' x W78 34.19' Elizabethtown Airport (Brown Field) EYF N34 36.11' x W78 34.76' Kinston Airport (Stallings Field) ISO: N35 19.89' x W77 36.53' 													
6. PERSONNEL													
AOBD(t): Mike Maguire O-69		Phone		AM FM									
ASGS: Hugh Carson O-64		828-775-1871		122.750									
ATGS: Rob Bickerstaff O-71		970-778-7078		122.925									
HEB2: Brian Sexton O-63		828-989-1314											
HLCO: Vean Noble O-68		805-350-3717		Rx: 171.575 N									
		907-252-5318		Tx: 171.575 N									
		AIR/GROUND Primary :		Rxtx Tone 131.8									
9. HELICOPTERS (Use Additional Sheets As Necessary)													
FAA N#	TY	MAKE/MODEL	BASE	On Duty	Ready to Fly	MANAGER	FAA N#	TY	MAKE/MODEL	BASE	On Duty	Ready to Fly	MANAGER
699RH A-115	1	K-MAX	Wallace Airport	0800	0830	Tracy Dott O-72 805-722-0170	1KA A-108	1	K-MAX	Turnbull HB	0800	0830	Chris Southerlund A108.6 509-668-1592
5013G A-116	3	B-206 L-1	Turnbull HB	0800	0800	Timothy Scherm O-95 304-940-3699	97PM A-103	3	B-206-L4	Turnbull HB	0800	0830	Jerry Burke O-39 606-521-3770

Juniper Road Fire

Information for 7-15-2011

If you see unescorted media on or near the fire, please contact the Public Information Officer by high-band radio or cell phone so a PIO escort can be provided – PIO contact information follows:

- Bill Swartley; Cell – (919) 218-3179; Radio – “Information Swartley”

Should the media approach you with questions about the fire, feel free to communicate the following Talking Points:

- The fire acreage was resized to 31,140 acres; containment remains at 85%.
- The fire footprint received between 0.4 and 1.7 inches of rain from Wednesday evening’s thunderstorms; the most precipitation fell on the northern portion of the fire.
- Ground fires along the fire’s southernmost containment lines remain a concern; organic soils continue to burn due to the extreme drought conditions. Heavy equipment cannot work to widen some sections of the containment line because there is too much ground fire heat and burning soils remain unstable.
- Engine crews are using hose lays along New Road to wet down ground fire that is burning into the soil foundation of the roadbed.
- The fire is burning in the Holly Shelter Game Lands, a state-owned property managed by the North Carolina Wildlife Resources Commission. Although access gates are open for firefighters, this game land is presently closed to the public.
- Many trees within the fire’s perimeter and interior have become unstable because the soil has burned away from the root systems. Ground fire heat and heavy equipment movement also a concern. Because of these hazards, fire managers strongly discourage the general public from attempting to enter the game lands to engage in windshield or walking tours of the fire.

If you observe non-incident personnel within the fire footprint or HS Game Lands, advise that game lands are closed to the public or contact either the NCWRC Agency Representative or Safety Officer to handle this communication; cell phone numbers can be found in the IAP.

#####

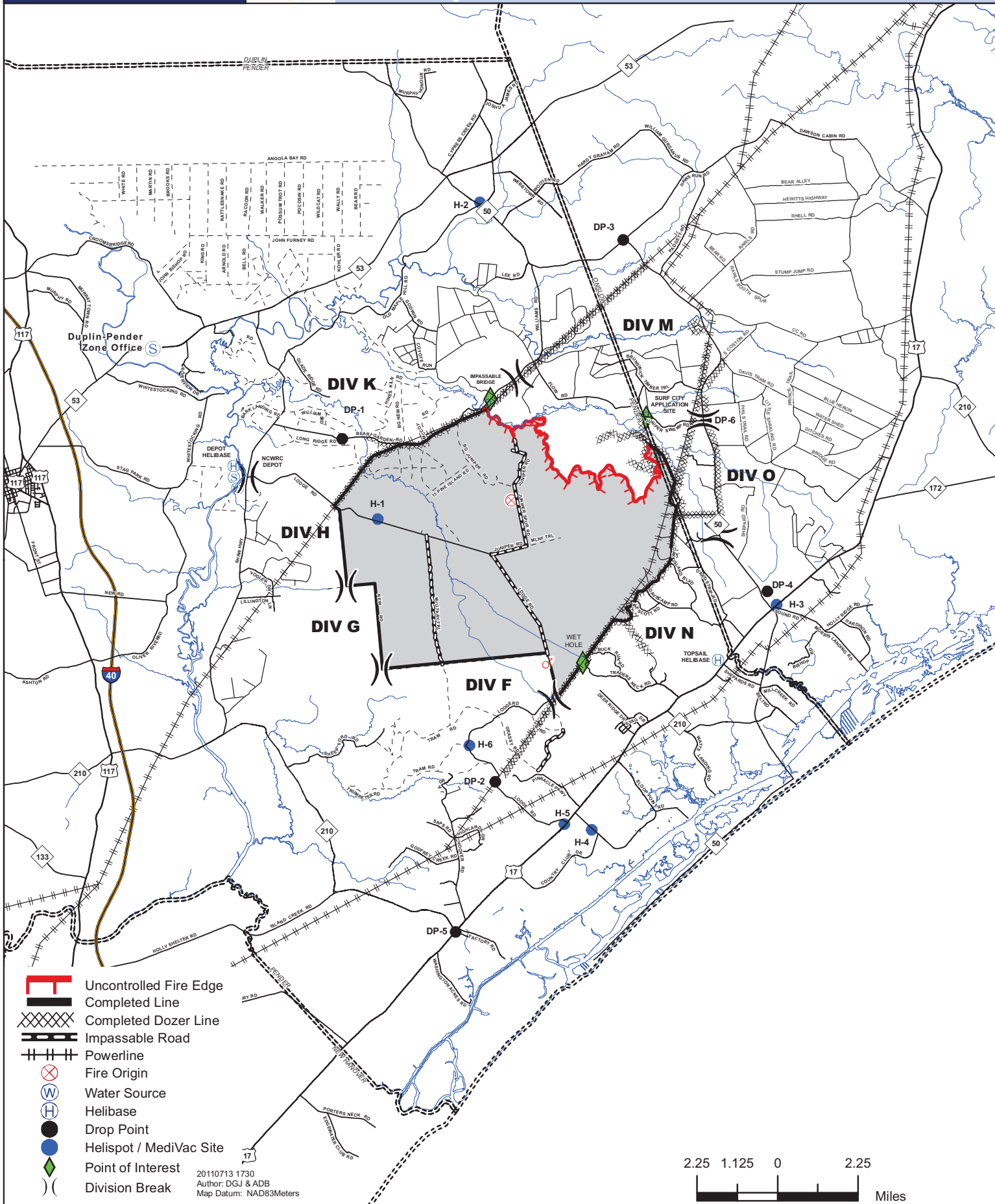
IAP MAP



Juniper Road Fire
NC-NCS-11-071-048
31,140 +/- acres

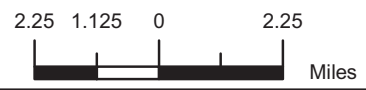


July 14, 2011
0700



- Uncontrolled Fire Edge
- Completed Line
- Completed Dozer Line
- Impassable Road
- Powerline
- Fire Origin
- Water Source
- Helibase
- Drop Point
- Helispot / MediVac Site
- Point of Interest
- Division Break

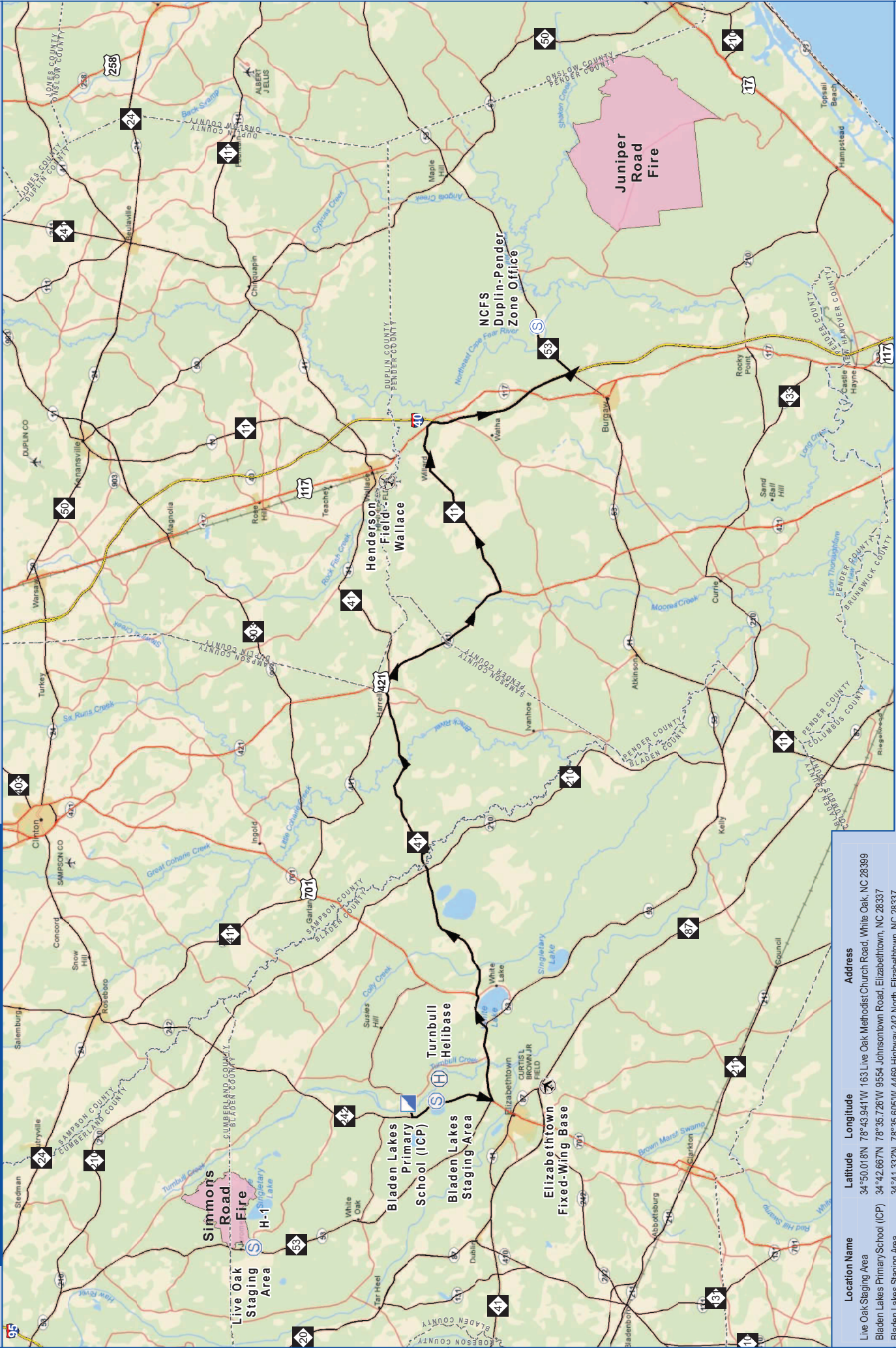
20110713 1730
 Author: DGJ & ADB
 Map Datum: NAD83Meters





DPZ Travel Map

Simmons Road Fire NC-NCS-11-009-049



Location Name	Latitude	Longitude	Address
Live Oak Staging Area	34°50.018N	78°43.941W	163 Live Oak Methodist Church Road, White Oak, NC 28399
Bladen Lakes Primary School (ICP)	34°42.667N	78°35.726W	9554 Johnsonstown Road, Elizabethtown, NC 28337
Bladen Lakes Staging Area	34°41.332N	78°35.605W	4469 Highway 242 North, Elizabethtown, NC 28337
Turnbull Helibase	34°41.205N	78°34.321W	4803 Sweet Home Church Road, Elizabethtown, NC 28337
Elizabethtown Fixed-Wing Base	34°36.106N	78°34.753W	466 Airport Road, Elizabethtown, NC 28337
NCFS Duplin-Pender Zone Office	34°36.319N	77°51.462W	5655 NC Highway 53 East, Burgaw, NC 28425

- Incident Command Post
- Staging Area
- Helibase
- Airstrip or Airport

Distances shown are based on the best available information at the time of collection.

7/10/2011 2:00
Map Datum: North American 1983
Author: DGI & ADB

0 2.5 5 10 15 Miles

