

PAINS BAY FIRE

NC-ALR-111006
PRF3FT (1502)



Incident Action Plan

TUESDAY

May 10, 2011

0730-1930 hrs

INCIDENT OBJECTIVES	1. Incident Name	2. Date Prepared	3. Time Prepared
	PAINS BAY FIRE	5/9/2011	1900hrs
4. Operational Period			
Tuesday, May 10, 2011 0730 to 1930 hrs			
5. General Control Objectives For The Incident (Include Alternatives)			
<u>Management Objectives:</u>			
<ol style="list-style-type: none"> 1. Firefighter and Public Safety is the NUMBER 1 Priority. 2. Protect Stumpy Point Community. 3. Work with County EMS and VFDs to develop trigger points for Stumpy Point Evacuation. 4. Contain the fire within established boundaries for indirect attack suppression strategy, using burn out fires as needed. 5. Assess the ability to open Dare Bomb Range to military operations on a daily basis. 			
<u>Operational Objectives:</u>			
<ol style="list-style-type: none"> 1. Prepare indirect fire lines along Longcurve, Faircloth, Air Force Perimeter, and Stomper Roads for burn out operations. 2. Establish trigger points for burn out operations in Divisions D and E. 3. Patrol and monitor fire line along Lake Worth Road and complete burn out. 4. Hold fire north of US 264 in Division A where possible. 			
6. Weather Forecast For Period			
See Attached Tailgate Safety Briefing Sheet.			
7. General Safety Message			
See Attached Tailgate Safety Briefing Sheet.			
8. Attachments (mark if attached)			
<ul style="list-style-type: none"> ✓ Organizational List – ICS 203 ✓ Div. Assignment Lists - ICS 204 ✓ Air Operations Summary- ICS 220 ✓ Communications Plan - ICS 205 ✓ Medical Plan - ICS 206 		<ul style="list-style-type: none"> ✓ Contact List ✓ Incident Map ✓ Tailgate Safety Briefing Sheet ✓ Unit Log - ICS 214 	
9. Prepared by (Planning Section Chief) /s/ Tom Lowry		10. Approved by (Incident Commander) /s/ Mike Quesinberry	

ORGANIZATION ASSIGNMENT LIST		9. Operations Section		
1. Incident Name Pains Bay Fire NC-ALR-111006		Chief	Danny Bryant Lea Wofford Ned Brickhouse	
			Barry Garten (T) Bill Woodyard (T) Tim Terrell (T)	
		a. Branch I - Divisions/Groups		
2. Date	5/9/2011	Division/Group	A, E	Jay Collett
		Division/Group	B	
4. Operational Period 5/10/2011 0730-1930hrs		Division/Group	C	Dwight Snow Rob Wood (T)
5. Incident Commander and Staff				
Incident Commander	Mike Quisenberry Greg Pate (NCFS)	Division/Group	D	Larry Lockett Vince Carver (T) M. Gibbs (T)
Safety Officer	Patrick Sheridan Steven Counts (T) Bruce Fitzpatrick Alan Farnsworth	Division/Group	SP	Larry Lockett
Information Officer	Bill Sweet	ICT3	A,E, D	James Cherry
6. Agency Representatives		b. Branch II - Divisions/Groups		
Agency	Name	Branch Director		
FWS	Mike Byrant	Deputy		
FWS	Scott Lanier	Division/Group		
NCFS	Ed Christopher	Division/Group		
		Division/Group		
		Division/Group		
7. Planning Section		c. Branch III - Divisions/Groups		
Chief	Tom Lowry	Branch Director		
Resources Unit	Dan Belanger Sue Wilder (T)	Deputy		
Situation Unit	Stephen Smith	Division/Group		
Fire Behavior Analyst	Michael Durfee Scott Ludlum	Division/Group		
Demobilization Unit	Henry Hickerson	Division/Group		
GIS	Laura Pickens	Division/Group		
GIS	Scott Hamlet			
CTSP	Debra Croston	d. Air Operations Branch		
CTSP (T)	Lori Gale	Air Attack Group Supervisor		
Status Check-In	Pat (Choo-Choo) McKnight	Air Operations Branch Director		Terry Harris
		Air Support Group Supervisor		Michael Mowery
		Air Tactical Group Supervisor		
8. Logistics Section		10. Finance Section		
Chief	Bill Lisowsky	Chief	Elizabeth Kinney	
Deputy Chief	John Bellemore	Comp/Time	Ruthi Blackman	
Supply Unit	Cindy Schiffer	Cost	Robert Gross	
Ground Support Unit	Tim Southland	Time	Bonnie Amaral	
Security Manager	Teddy Mullins			
Communications Unit	Claude Gilleland			
Medical Unit	Alice Barnett			
Ordering Manager	Sandy Rhodes			
Equipment	Ralph DeWeese			
		Prepared by: Sue Wilder (T)		

DIVISION ASSIGNMENT LIST				1. Ops Chief Lea Wofford Danny Byrant Ned Brickhouse Barry Garten (T) Bill Woodyard (T) Tim Terrell (T)		2. Division/Group Division A, E	
3. Incident Name PAINS BAY FIRE				4. Operational Period Date: 5/10/2011 Time: 0730-1930hrs			
5. Operations Personnel							
Division/Group Supervisor		Jay Collett / Chris Schow		Safety		Pat Sheridan	
6. Resources Assigned this Period							
Strike Team/Task Force/ Resource Designator		Leader		Number Persons	Trans. Needed	Drop Off PT./Time	Pick Up PT./Time
T6 ENG; E13; SC-FMF		J. Neville		3	NO	0730hrs	1930hrs
T6 ENG; E15; SMFR#1		M. Scroggs		3	NO	0730hrs	1930hrs
T6 ENG; E16; SMFR#2		G. Bartlette		3	NO	0730hrs	1930hrs
T6 ENG; E10;MARIENVILLE		C. Kostrzewski		3	NO	0730hrs	1930hrs
STPL		A. Hux		1	NO	0730hrs	1930hrs
Flex Trac; 13X64; NCFS		B. Bryant/Page		2	NO	0730hrs	1930hrs
Flex Trac; 13X21; NCFS		Perry/Cuskee		2	NO	0730hrs	1930hrs
Flex Trac; 13X2; NCFS		Gibbs/Harns		2	NO	0730hrs	1930hrs
SOF2		A. Farnsworth		1	NO	0730hrs	1930hrs
7. Control Operations <ul style="list-style-type: none"> • Keep fire north of Hwy 264, east of Stomper, Perimeter and Faircloth Roads. • Mop-up spots along Pamlico Road. 							
8. Special Instructions <ul style="list-style-type: none"> • Contract crew will be working on phone line repair in DIVS B. 							
9. Division/Group Communication Summary							
Function	Frequency	System	Channel	Function	Frequency	System	Channel
Command		KING NIFC	12 OR 14	Logistics		KING NIFC	
Tactical Div/Group		KING NIFC	4	Air to Ground		KING NIFC	8
Prepared by (Resource Unit Leader) Sue Wilder RESL (T)		Approved by (Planning Section Chief) Tom Lowry PSC1			Date 05/9/2011		Time 1830hrs

DIVISION ASSIGNMENT LIST		1. Ops Chief Lea Wofford Danny Byrant Ned Brickhouse Barry Garten (T) Bill Woodyard (T) Tim Terrell (T)		2. Division/Group Division B			
3. Incident Name PAINS BAY FIRE		4. Operational Period Date: 5/10/2011 Time: 0730-1930hrs					
5. Operations Personnel							
Division/Group Supervisor		Safety		Pat Sheridan			
6. Resources Assigned this Period							
Strike Team/Task Force/ Resource Designator	Leader	Number Persons	Trans. Needed	Drop Off PT./Time	Pick Up PT./Time		
UNSTAFFED							
7. Control Operations <ul style="list-style-type: none"> Keep fire north of Hwy 264, east of Stomper, Perimeter and Faircloth Roads. 							
8. Special Instructions <ul style="list-style-type: none"> Contract crew will be working on phone line repair. 							
9. Division/Group Communication Summary							
Function	Frequency	System	Channel	Function	Frequency	System	Channel
Command		KING NIFC		Logistics		KING NIFC	
Tactical Div/Group		KING NIFC		Air to Ground		KING NIFC	
Prepared by (Resource Unit Leader) Sue Wilder RESL (T)		Approved by (Planning Section Chief) Tom Lowry PSC1		Date 05/9/2011		Time 1830hrs	

DIVISION ASSIGNMENT LIST		1. Ops Chief Lea Wofford Danny Byrant Ned Brickhouse Barry Garten (T) Bill Woodyard (T) Tim Terrell (T)		2. Division/Group Division C			
3. Incident Name PAINS BAY FIRE		4. Operational Period Date: 5/10/2011 Time: 0730-1930hrs					
5. Operations Personnel							
Division/Group Supervisor		Dwight Snow Rob Wood(T)		Safety Pat Sheridan			
ICT3- IA		James Cherry					
6. Resources Assigned this Period							
Strike Team/Task Force/ Resource Designator	Leader	Number Persons	Trans. Needed	Drop Off PT./Time	Pick Up PT./Time		
T6 ENG; PLE2	Davis	2	NO	0730hrs	1930hrs		
T6 ENG; Mackay 8	J. Black	2	NO	0730hrs	1930hrs		
T6 ENG; Mattamuskeet	Beckwith/Mickler	3	NO	0730hrs	1930hrs		
WT; E21	L. Bartlett	1	NO	0730hrs	1930hrs		
T6 ENG; E9; VA-SHP	C. Rudacille	3	NO	0730hrs	1930hrs		
SOF2	A. Farnsworth	1	NO	0730hrs	1930hrs		
7. Control Operations							
<ul style="list-style-type: none"> Keep fire south of Lake Worth Road and west of Long Curve Road. Prepare for burn out along Long Curve Road. 							
8. Special Instructions							
<ul style="list-style-type: none"> PLE2 and Mackay 8 - be prepared for IA with ICT3-IA J. Cherry. Contract crew will be working on phone line repair in DIVS B. 							
9. Division/Group Communication Summary							
Function	Frequency	System	Channel	Function	Frequency	System	Channel
Command		KING NIFC	12 or 14	Logistics		KING NIFC	
Tactical Div/Group		KING NIFC	1	Air to Ground		KING NIFC	8
Prepared by (Resource Unit Leader) Sue Wilder RESL (T)		Approved by (Planning Section Chief) Tom Lowry PSC1		Date 05/9/2011		Time 1830hrs	

DIVISION ASSIGNMENT LIST		1. Ops Chief Lea Wofford Danny Byrant Ned Brickhouse Barry Garten (T) Bill Woodyard (T) Tim Terrell (T)		2. Division/Group Division D			
3. Incident Name PAINS BAY FIRE		4. Operational Period Date: 5/10/2011 Time: 0730-1930hrs					
5. Operations Personnel							
Division/Group Supervisor	Larry Luckett Vince Carver (T) Marshal Gibbs (T)	Safety	Pat Sheridan				
ICT3-IA	James Cherry						
6. Resources Assigned this Period							
Strike Team/Task Force/ Resource Designator	Leader	Number Persons	Trans. Needed	Drop Off PT./Time	Pick Up PT./Time		
Excavator; NCFS	T. Terrell	1	NO	0730hrs	1930hrs		
Grader; NCFS	T. Harrell	1	NO	0730hrs	1930hrs		
T2DOZ; PLE3	Walston	1	NO	0730hrs	1930hrs		
Flex Trac; AX2FT	Swain/Norstrom	2	NO	0730hrs	1930hrs		
Flex Trac; AX4FT	Govan/Howle	2	NO	0730hrs	1930hrs		
Marsh Master; NCFS	A. Mann	1	NO	0730hrs	1930hrs		
T6 ENG; E12; PATRICK ENV	C. Gilpin	2	NO	0730hrs	1930hrs		
T6 ENG; E17; Croatan 33	A. Hill	2	NO	0730hrs	1930hrs		
SOF2	B. Fitzpatrick	1	NO	0730hrs	1930hrs		
7. Control Operations <ul style="list-style-type: none"> Continue line prep along Jackson Road. Prepare to assist with Burnout on DIVS C. 							
8. Special Instructions <ul style="list-style-type: none"> AX2FT and AX4FT- be prepared for IA with ICT3-IA J. Cherry. 							
9. Division/Group Communication Summary							
Function	Frequency	System	Channel	Function	Frequency	System	Channel
Command		KING NIFC	12 or 14	Logistics		KING NIFC	
Tactical Div/Group		KING NIFC	2	Air to Ground		KING NIFC	8
Prepared by (Resource Unit Leader) Sue Wilder RESL (T)		Approved by (Planning Section Chief) Tom Lowry PSC1		Date 05/9/2011		Time 1830hrs	

DIVISION ASSIGNMENT LIST		1. Ops Chief Lea Wofford Danny Byrant Ned Brickhouse Barry Garten (T) Bill Woodyard (T) Tim Terrell (T)		2. Division/Group Division Structure Protection			
3. Incident Name PAINS BAY FIRE		4. Operational Period Date: 5/10/2011 Time: 0730-1930hrs					
5. Operations Personnel							
Division/Group Supervisor		Larry Lockett Vince Carver (T) Marshal Gibbs (T)		Safety Pat Sheridan			
6. Resources Assigned this Period							
Strike Team/Task Force/ Resource Designator	Leader	Number Persons	Trans. Needed	Drop Off PT./Time	Pick Up PT./Time		
TFLD	R. Shackleford	1	NO	07300hrs	1930hrs		
Marsh Master; ALR1	Powers	1	NO	07300hrs	1930hrs		
ENG; Stumpy VFD	Price	4	NO	07300hrs	1930hrs		
ENG; Manns Harbor VFD	Gard	5	NO	07300hrs	1930hrs		
ENG; Roanoke Island VFD		4	NO	07300hrs	1930hrs		
Support Truck; Collington VFD		3	NO	07300hrs	1930hrs		
7. Control Operations							
8. Special Instructions							
9. Division/Group Communication Summary							
Function	Frequency	System	Channel	Function	Frequency	System	Channel
Command		KING NIFC	12 or 14	Logistics		KING NIFC	
Tactical Div/Group		KING NIFC	3	Air to Ground		KING NIFC	8
Prepared by (Resource Unit Leader) Sue Wilder RESL (T)		Approved by (Planning Section Chief) Tom Lowry PSC1		Date 05/9/2011		Time 1830hrs	

AIR OPERATIONS SUMMARY		PREPARED BY: Terry Harris			PREPARED DATE/TIME: 5/9/2011 1700			
1. INCIDENT NAME Pains Bay Fire		2. OPERATIONAL PERIOD DATE: 5/10/2011			START TIME: 0800	END TIME: 2000	SUNRISE: 6:02 AM	SUNSET: 19:56 PM
3. REMARKS (Safety Notes, Hazards, Air Operations Special Equipment, etc.) -PILOTS-WATCH FOR BIRDS AND OTHER AIRCRAFT -BE ALERT FOR HIGH WINDS AND TURBULANCE -NOTE THAT SOME TOWERS ARE NOT MARKED ON SECTIONAL MAPS. TOWERS COULD BE UP TO 2500 FEET TALL -ALL FIREFIGHTING AIRCRAFT NEED TO SQUAWK 1255. FLY WITH LIGHTS ON. -HEADS UP WHEN PERFORMING WATER DROPS AROUND CREWS ON THE GROUND -MAINTAIN CLEAR COMMUNICATIONS -CREWS STAY AWAY FROM WATER DROPS INCLUDING APPROACH AND DEPARTURES -AIRCRAFT WILL BE ORDERED AND DISPATCHED UTILIZING LATITUDE AND LONGITUDE-DEGREES, MINUTES, SECONDS -AIRCRAFT PRIORITIES 1. PUBLIC AND FIREFIGHTER SAFETY 2.PROTECTION OF PROPERTY AND RESOURCES 3. INITIAL ATTACK 4.POTENTIAL PROBLEM FIRES 5. UNSTAFFED FIRES FDC 1/1167 CIRCLE 2000 MSL PAINS BAY IF FILLING A SAFECOM PLEASE NOTIFY AIR OPERATIONS BRANCH					4. MEDEVAC A/C:		5. TFR: 1. DETERMINE THE NEED FOR TFR. 2. IMMEDIATE NOTIFICATION OF INTRUSIONS ARE TO BE PLACED WITH THE FAA.	
6. PERSONNEL		Phone	7. FREQUENCIES		AM	FM	8. FIXED WING # Available/ Type/ Make-Model/FAA N# / Bases	
AOBD: Terry Harris ASGS: Mike Mowery		936-366-4239 870-214-0034	AIR/AIR FW: AIR/AIR RW: NATIONAL FLIGHT FOLLOWING (NARROW BAND) ATGS/LEAD/ASM TRANSITION-HANDOFF		123.125 122.425		Airtankers ALLIGATOR RIVER DISPATCH 252-473-1744 X 21	
ATGS: ATGS:			AIR/AIR RW: SEE ABOVE					
HLCO: NONE			AIR/GROUND: Primary			Rx 171.575 N Tx 171.575 Tone 131.8		
			AIR/GROUND: Secndry			169.925		
			COMMAND: (Simplex)				Leadplanes	
HEB1: David Zuares		208-841-8022	COMMAND RPT SEE ICS 205		Rx:	Tx:		
			DECK FREQ:			168.6125	ATGS Aircraft	
			TOLC FREQ:					
							Other: SEAT	

DARE BOMBING RANGE				USE WHEN ENTERING RANGE AIRSPACE	122.900								
9. HELICOPTERS (Use Additional Sheets As Necessary)													
FAA N#	TY	MAKE/MODEL	BASE	AVAIL	START	REMARKS	FAA N#	TY	MAKE/MODEL	BASE	AVAIL	START	REMARKS
N905CH	1	SIKORSKY S-61-N	MQI		0900	ALBERT NEWMAN 928-606-5101							
N828HA	3	Bell 206	MQI		0800	KYLE KRZYWICKI 757-617-4970							
N14HX	3	Bell 407	MQI		0800	BOB MADISON 505-385-0401							

AIR OPERATIONS SUMMARY					
10. TASK/MISSION/ASSIGNMENT (Type/Function includes Air Tactical, Retardant, Recon, Personnel Transport, Water Dropping, S&R, etc.)					
			MISSION START	FLY FROM	FLY TO

Incident Radio Communications Plan		1.Incident Name: Pains Bay		2. Date/Time Prepared: 05/09/11 1430 hrs		3. Operational Period (Date/Time) 5/10/11	
4. Basic Radio Channel Utilization							
System/Cache	Channel	Function	Frequency/Tone	Assignment	Remarks		
NC Forest Service	CH 1	TAC1	RX 151.400WIDE TX 151.400W Tone 136.5	DIVS C			
NC Forest Service	CH 2	TAC 2	RX 151.460W TX 151.460W Tone 136.5	DIVS D			
NC Forest Service	CH 3	TAC 3	RX 151.310W TX 151.310W Tone 136.5	Structure Protection			
NIFC	CH 4	TAC 4	RX 168.050N TX 168.050 NARROW	DIVS A, E			
NIFC	CH 5	TAC 5	RX 168.200N TX 168.200N				
NIFC	CH 6	TAC 6	RX 168.600N TX 168.600N				
NIFC	CH 7	TAC 7	RX/TX 163.100N				
NIFC	CH 8	US FWS AIR TO GROUND	RX 171.575N TX 171.575 Tone 131.8	Fire Line			
TFS	CH 9	TAC 9	168.350N	FIRE LINE TAC			
NIFC	CH 10				Out of service		
US FWS	CH 11	COLUMBIA CMD REPEATER 11	RX 172.675 N TX 168.500 N Tone 118.8		North		
US FWS	CH 12	ENGLEHART CMD REPEATER 12	RX 164.625N TX 163.150 Tone 186.2		South		
US FWS	Ch 13	TAC 13	TX/RX 162.2375N TONE 156.7				
NIFC	CH14	CMD Repeater 14	RX 167.10-N TX 169.750N TONE 146.2		Located at Stumpy Point		
AIR TO GROUND	Ch 15	AIR TO GROUND SECONDARY	RX/TX 169.925				
AIR GUARD	Ch 16	Air Guard	RX/TX 168.625 TX Tone 110.9	Emergency contact with Aircraft			
Communications		Comm Unit	678-316-4615	Claude Gilleland			
ICS 205	5. Prepared By (Communications Unit Leader): Claude Gilleland						

MEDICAL PLAN	1. Incident Name Pains Bay Fire	2. Date Prepared 05/09/11	3. Time Prepared 1530	4. Operational Period 05/10/11 0700-1900			
5. Incident Medical Aid Station							
Medical Aid Stations	Location			Paramedics Yes No			
Mann Harbor VFD Community Bldg (0900-1830hrs)	6677 Hwy 64 Business Mann Harbor			X			
Stumpy Point VFD (0730-0830hrs)	Stumpy Point			X			
Stumpy Point NCDFR Maintenance (1900-2030hrs)	Stumpy Point			X			
6. Transportation							
A. Ambulance Services							
Name	Address	Phone	Paramedics Yes No				
Dare County EMS Station #8	6677 Hwy 64 Business, Mann Harbor, NC	Dare Central (911)	X				
Dare County Med Flight	1078 Driftwood Dr., Manteo, NC	911	X				
B. Incident Ambulances							
Name	Location			Paramedics Yes No			
7. Hospitals							
Name	Address	Travel Time Air Ground		Phone	Helipad Yes No	Burn Center Yes No	
Outer Banks Hospital	Mile Post 14, 4800 S. Croatan Hwy Nags Head, NC Latitude: N 35° 56' 20.33" Longitude: W 75° 45' 5.89"	15	30	(252) 449-4500	X		X
Sentara Lee Burn Center	Norfolk, VA	30	90	(757) 668-3117	X		X
8. Medical Emergency Procedures							
<p>Report all injuries and illnesses to the closest DIVS. DIVS will notify ICP Communications and include the extent of the injury and transportation needed. A medical emergency should be declared over the radio immediately. All radio traffic will be kept to a minimum so emergency procedures can proceed uninhibited. ICP Communications will notify Dare Central Dispatch (911) and MEDL. Safety will be notified. Dare County EMS will respond and determine the appropriate treatment, transportation and facility needed. If ground transportation is determined, if possible assign personnel to meet the ambulance at a location that is easily accessible to lead them to the site of the injured. If patient is transported to meet EMS personnel needs to remain with patient until EMS has arrived.</p> <p>Non emergencies will be treated at the Medical Unit located at ICP or transported to the local clinic.</p>							
Prepared by (Medical Unit Leader) Alice Barnette, MEDL cell: (404-354-6005) 24hrs				10. Reviewed by (Safety Officer) Pat Sheridan			

PAINS BAY FIRE CONTACT LIST May 10, 2011

Name	Position	Phone
COMMAND		
Quesinberry, Mike	ICT1	540-230-1262
Pate, Greg NCFS	IC-NCFS	252-560-5018
Sheridan, Patrick	SOF1	540-968-6193
Sweet, Bill	PIO1	404-354-5799
FWS		
Byrant, Mike	Project Leader-NWRs	
		252-216-7505
Lanier, Scott	Deputy Proj Leader- NWRs	
		252-216-7506
Alligator River NWR		252-473-1131
Dare County Sheriff		252-473-3444
Czernik, Helen		252-473-3444
Strawser, Bonnie	PIO2	252-216-8667
COOPERATORS		
Price, RD	Chief, Stumpy Pt Fire Dept	
		252-216-7146
Price, Curtis	Dpty Chief, Stumpy Pt FD	
	cell	252-216-7094
	home	252-475-1040
Sanderson, Sandy	Emergency Mgmt Coord	
		252-473-8326
Shackelford, Rob	NCFS	252-216-5271
	home	252-216-8800
	office	252-473-2531
Patterson, Karen	IBS NCFS	919-218-2586
Christopher, Ed	NCFS	252-542-0119
OPERATIONS		
Wofford, Lea	OSC1	404-909-0240
Bryant, Danny	OSC1	601-500-2505
Garten, Barry	OSC1 (t)	404-304-3725
Woodyard, Bill	OSC1 (t)	432-244-9508
Sanders, Greg	OSC2	540-529-3376
Luckette, Larry	DIVS	770-718-7064
Collett, Jay	DIVS	540-292-1038
Snow, Dwight	DIVS	352-516-4969
Crews, Tom	ICT3	252-475-4269

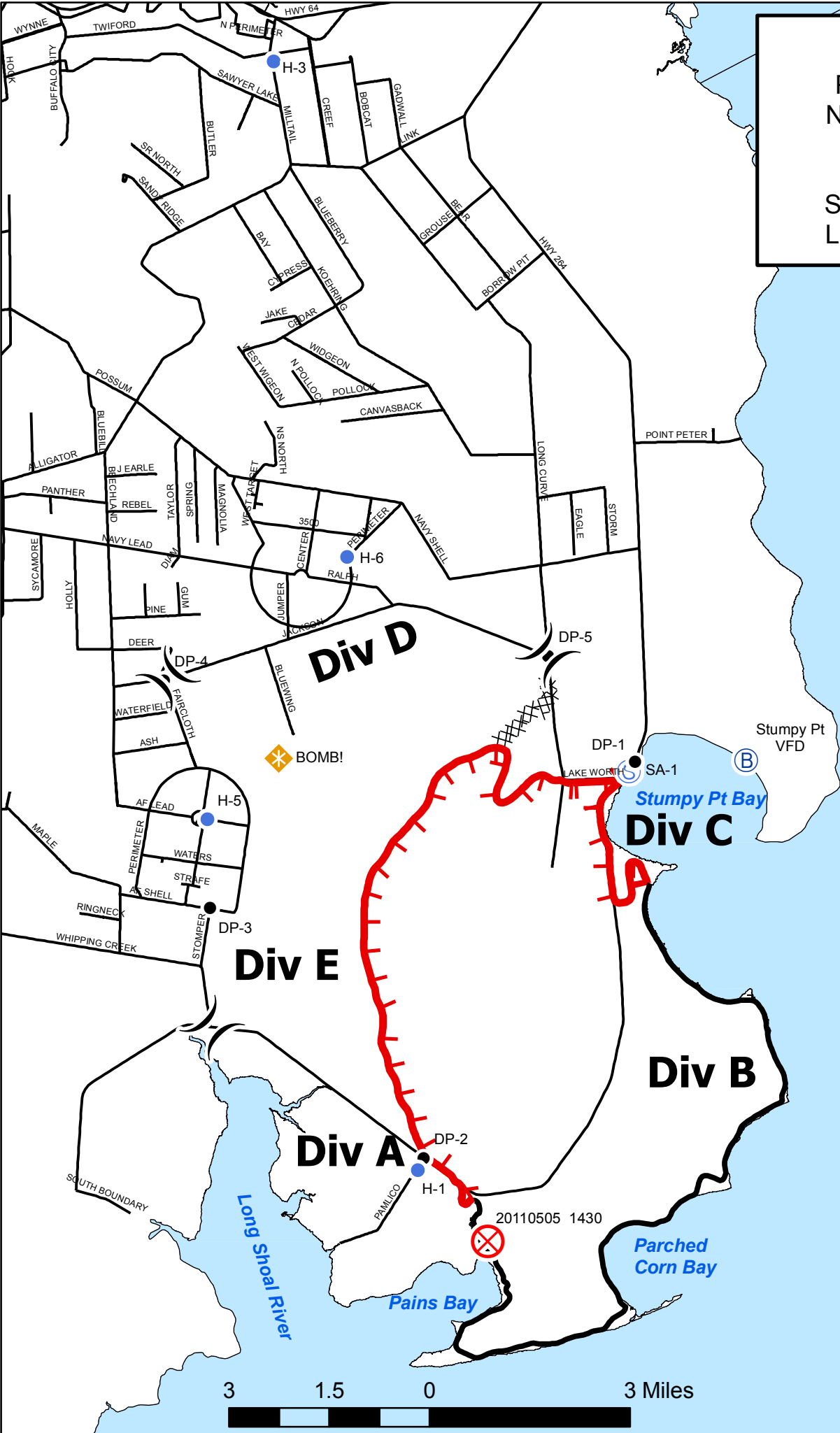
Name	Position	Phone
AIR OPERATIONS		
Harris, Terry	AOBD	936-366-4239
Mowery, Mike	ASGS	870-214-0034
DISPATCH		
NWR Dispatch		252-473-1744 x 21
NWR Dispatch		252-473-1744 x 22
PLANS		
Lowry, Tom	PSC1	918-429-4258
Smith, Steve	SITL	405-206-1854
Belanger, Dan	RESL	828-231-1529
Wilder, Sue	RESL(t)	985-373-1199
McKnight, Pat (Choo-Choo)	SCKN	570-862-6321
Hickerson, Henry	DMOB	540-798-1610
Croston, Debra	CTSP	570-352-2664
Gale, Lori	CTSP(t)	603-520-0243
Durfee, Michael	FBAN	973-632-4239
Ludlum, Scott	FBAN	252-903-8007
Pickens, Laura	GISS	252-475-0153
Hamlet, Scott	GISS	918-448-3111
FINANCE		
Kinney, Liz	FSC1	404-354-6100
Gross, Robert	COST	207-592-3416
Blackman, Ruthi	COMP	404-354-6287
Kinder, Glen	PROC	970-217-0235
Amaral, Bonnie	TIME	828-779-2067
LOGISTICS		
Lisowsky, Bill	LSC1	270-748-0253
Bellemore, John	LSC2	404-354-7320
Rhodes, Sandy	ORDM	501-574-8730
Schiffer, Cindy	SPUL	540-230-1269
Southland, Tim	GSUL	828-371-7966
DeWeese, Ralph	EQPM	662-633-0607
Gilleland, Claude	COML	678-316-4615
Barnett, Alice	MEDL	404-354-6005
Mullins, Teddy	SECM	540-239-2175
Borel, Lisa	DRIV	931-308-2502
Collins, Jessica	DRIV	952-475-8351

Name	Position	Phone	Name	Position	Phone
COMMAND			PLANS		
ICP INFORMATION	Norvell	432-688-9228	ICP PSC1	Lowry	432-688-9232
ICP INFORMATION		432-688-9234	ICP RESOURCES		432-688-9221
Quesinberry, Mike	ICT1	540-230-1262	ICP DEMOB	Moore	432-688-9220
Dueitt, Mike	ICT(t)	850-228-0320	ICP DEMOB FAX		432-688-4998
Wilkins, Mike	DIPC	828-421-5026	ICP IMET/FBAN/GIS		432-688-9222
Morales, Mark	DIPC2	479-264-7991	SAN ANGELO PLANS	Weston	325-655-5016
Beisel, Brian	SOF1	270-348-1066	Lowry, Tom	PSC1	918-429-4258
Sheridan, Patrick	SOF1	540-968-6193	Weston, Phil - San Angelo	PSC2	850-443-4279
Cupp, Ivan	SOF2	409-990-7155	Hay Sharp, Janan	PSC1 (t)	423-261-4177
Swann, Ron	SOF2	540-968-1943	Moore, Daniel	DMOB	432-688-9220
Miller, Randy	SOF2	979-324-0702	Fischer, Pete	RESL	304-642-1801
McGee, John	SOF2	404-354-6521	Chadwick, Kara	RESL	703-447-3944
Kornrump, Bill	SOF2	565-463-8412	Choplick, Charlie	RESL	717-877-1687
Kepler, Harry	SOF2	205-292-7764	Wilder, Sue	RESL(t)	985-373-1199
Hayes, Mike	SOF2	979-215-9164	Nichols, Lori	RESL(t)	501-622-0263
Krueger, Tom	SOF2	812-719-4953	Wallace, Jon	FBAN	561-634-1417
Lidell, Brad	SOF2	812-583-5543	Murdoch, Greg	IMET	240-778-3857
Lipps, Woody	LOFR	540-314-3651	Corley, Scott	SCKN	318-446-1928
Norvell, C. J.	PIO	918-314-6635	Rist, Jodi	SCKN	970-417-6408
Aurimmo, Leslie	PIO2	423-596-0933	Croston, Debra	CTSP	570-352-2664
Hibbard, Catherine	IOF2	413-531-4276	Leduc, Dan	CTSP	318-613-0362
Strawser, Bonnie	IOF2		Dronberger, Jerry	CTSP	478-747-7020
Farley, Hannah	PIO2(t)	580-212-0787	May, Nicole	TNSP	601-826-4128
Hawk, Nicole	PIOF(t)	270-206-1489	Rivera, Olias	TNSP	435-950-3334
Mazzeo, Joe	PIO1	617-697-6721	Andre, John	SITL	479-747-3615
AGENCY REPS			Hamlet, Scott	SITL (t)	432-386-0535
Collins, Sandra	TX DOT	325-668-6065	Hocut, Tammy	GISS	870-365-2810
Farbor, Capt. Doug	DPS	325-660-9339	Dodd, Mannin	GISS (t)	540-239-1640
INTERAGENCY RESOURCE REPS			Pittman, Lori	GISS	615-867-4407
Hall, Donald (R3)	IARR	505-452-7970	Kinnaman, Anthony	HRSP	936-208-0162
Powskey, Richard (R3)	IARR (t)	480-370-5273	FINANCE		
Garcia, Ron (R5)	IARR	559-392-1045	ICP FSC1	Taylor	432-688-9224
			ICP FSC1 (t)	Perez	432-688-9235
			ICP FINANCE FAX		432-688-4994
			ICP BUYL	Reddin	432-688-9233
			ICP BUYING TEAM FAX		432-688-4997
			Taylor, Diane	FSC1	404-290-3615
			Perez, Mike	FSC1 (T)	404-354-5878
			Steele, Tom	COST	404-354-5878
			Ott, Terri	COMP	803-240-5025
			Holton, Mary	INJR	803-240-5025
			Amaral, Bonnie	TIME	828-779-2067
			Reddin, Judy	BUYL	559-283-1852
			Phipps, Linda	BUYM	559-202-6834

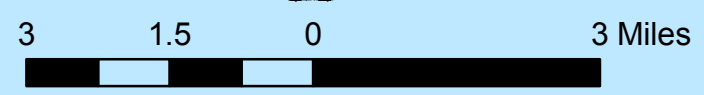
Name	Position	Phone	Name	Position	Phone
OPERATIONS			LOGISTICS		
ICP OSC1	Bryant	432-688-9227	ICP LOGISTICS	Lisowsky	432-688-9230
ICP OSC1 (t)		432-688-9236	ICP ORDERING	Rhodes	432-688-9229
Wofford, Lea	OSC1	404-909-0240	ICP MEDICAL UNIT	Ellis	432-688-9231
Bryant, Danny	OSC1	601-500-2505	ICP INFO & ORDERING FAX		432-688-4995
Ledbetter, Tom	OPBD	432-386-2087	SAN ANAGELO LOGISTICS	Harrel	404-354-5285
Sanders, Greg	OPBD	540-529-3376	SAN ANGELO SUPPLY	Smith	404-354-5679
Garten, Barry	OSC1 (t)	540-521-4189	SAN ANGELO MEDICAL UNIT	Exline	404-354-5419
Woodyard, Bill	OSC1 (t)	706-859-1497	SAN ANGELO COM	Garrett	404-354-5279
Pearson, Patrick	OSC2	321-403-7638	FT STOCKTON CAMP FAX		432-336-7298
Stratton, Glen	OSC2	386-689-3626	SAN ANGELO CAMP FAX		325-947-0149
Parrish, Steve	OSC2	850-524-1244	MIDLAND CAMP FAX		432-684-6823
Bentley, Marty	OSC2(t)	423-584-1682	FT DAVIS CAMP - EMERGENCY NUM		281-220-5929
Myers, Pete	OSC2(t)	386-867-2394	Schiffer, Cindy - Ft Davis	SPUL	432-386-0728
Bustamante, Richard	DIVS	505-250-3067	Dybing, Peter - Ft Davis	SPUL	340-626-6365
Heard, Michael	DIVS	334-488-5966	Lisowsky, Bill	LSC1	270-748-0253
Womack, Mike	DIVS	434-547-2670	Bellemore, John	LSC2	979-571-8285
Sears, Larry	DIVS	928-814-8724	Harrel, Bob	LSC2	
Phelps, Troy	DIVS	775-934-0574	Gilleland, Claude	COML	678-316-4615
Wild Jordan, Charlotte	DIVS	559-760-3873	Garrett, Larry	COML	479-849-5277
Titus, Greg	DIVS	850-251-1254	Gonzales, Jerry - Ft Davis	FACL	432-386-0718
Hulburd, Aaron	DIVS	928-713-4699	Boyd, Tom	FACL	360-701-1648
Isaacs, Jimmy	DIVS	828-406-1704	Howard, Bill	FACL	501-515-7156
Smith, Joseph	DIVS	256-201-1196	Walker, Deborah	FACL	910-975-0803
Smith, Phillip	DIVS		Ellis, Shanna	MEDL	318-229-6515
Casto, Debbie	DIVS		Crawley, Brian - Ft Davis	MEDL	432-386-0715
Schardt, Jeff	DIVS	206-280-5498	Newman, James "Bo"	GSUL	662-633-0556
Crockett, Jeremiah	DIVS	207-540-2079	Emberson, Joe - Ft Davis	EQPM	432-386-0682
Lee, Mike	DIVS	770-480-5142	Rhodes, Sandy	ORDM	501-574-8730
AIR OPERATIONS			Polk, Stephen	ORDM (T)	540-529-3849
Harris, Terry	AOBD	936-366-4239	Mullins, Teddy	SECM	540-239-2175
Wicks, Bruce	AOBD	530-906-2224	Jenkins, Richard - Ft Davis	SECM	270-703-0135
Wyatt, Danny	ASGS	828-467-0541	Snyder, Mark - Ft Davis	SEC1	951-315-7835
Mowery, Mike	HEB1	870-214-0034	Garcia, Ben - Ft. Davis	BCMG	979-229-3715
Stuart, Katie	HEB2	603-455-1460	Crews, Bill - Amarillo	BCMG	979-229-6290
Sheppard, George	ATGS	239-298-9772	McRae, Ted - Ft Stockton	BCMG	979-229-7861
Lane, Joel	ATGS		Stevens, Duane - Ft Stockton	BCMG	979-229-9732
			LaJoie, Russ - San Angelo	BCMG	619-540-1711
			Holsclaw, Terry - Midland	BCMG	432-254-1976
			Kelly, Kevin - San Angelo	BCMG	231-313-5808
			Sutton, Orlando - San Angelo	BCMG	843-412-3571
			DISPATCH		
			TICC		936-875-4786
			TICC FAX		936-875-4812
			MIDLAND DISP		432-684-4915

IAP Map

Pains Bay Fire
NC-ALR-111006
May 10, 2011
20,992 ac
S. Hamlet, GISS
L.Pickens, GISS



- () Division
- Helispot
- Ⓟ Incident Base
- ⊗ Fire Origin
- Ⓢ Staging Area
- Drop Point
- ⚡ Bomb
- ⊘ Completed Dozer Line
- Completed Line
- └ Uncontrolled Fire Edge
- Roads



INCIDENT OBJECTIVES	1. Incident Name	2. Date Prepared	3. Time Prepared
	PAINS BAY FIRE	5/9/2011	1900hrs
4. Operational Period			
Tuesday, May 10, 2011 0730 to 1930 hrs			
5. General Control Objectives For The Incident (Include Alternatives)			
<p><u>Management Objectives:</u></p> <ol style="list-style-type: none"> 1. Firefighter and Public Safety is the NUMBER 1 Priority. 2. Protect Stumpy Point Community. 3. Work with County EMS and VFDs to develop trigger points for Stumpy Point Evacuation. 4. Contain the fire within established boundaries for indirect attack suppression strategy, using burn out fires as needed. 5. Assess the ability to open Dare Bomb Range to military operations on a daily basis. <p><u>Operational Objectives:</u></p> <ol style="list-style-type: none"> 1. Prepare indirect fire lines along Longcurve, Faircloth, Air Force Perimeter, and Stomper Roads for burn out operations. 2. Establish trigger points for burn out operations in Divisions D and E. 3. Patrol and monitor fire line along Lake Worth Road and complete burn out. 4. Hold fire north of US 264 in Division A where possible. 			
6. Weather Forecast For Period			
See Attached Weather Foreceast.			
7. General Safety Message			
See Attached Safety Message.			
8. Attachments (mark if attached)			
<ul style="list-style-type: none"> ✓ Organizational List – ICS 203 ✓ Fire Wx Forecast/Fire Behavior ✓ Div. Assignment Lists - ICS 204 ✓ Air Operations Summary- ICS 220 ✓ Communications Plan - ICS 205 ✓ Medical Plan - ICS 206 		<ul style="list-style-type: none"> ✓ Safety Message ✓ Contact List ✓ Incident Map ✓ Unit Log - ICS 214 	
9. Prepared by (Planning Section Chief) /s/ Tom Lowry		10. Approved by (Incident Commander) /s/ Mike Quesinberry	