



PAINS BAY FIRE

NC-ALR-111006
PRF3FT (1502)



Incident Action Plan

WEDNESDAY

May 11, 2011

0730-1930 hrs

INCIDENT OBJECTIVES	1. Incident Name	2. Date Prepared	3. Time Prepared
	PAINS BAY FIRE	5/10/2011	1900hrs
4. Operational Period			
Wednesday, May 11, 2011 0730 to 1930 hrs			
5. General Control Objectives For The Incident (Include Alternatives)			
<u>Management Objectives:</u>			
<ol style="list-style-type: none"> 1. Firefighter and Public Safety is the NUMBER 1 Priority. 2. Protect Stumpy Point Community. 3. Work with County EMS and VFDs to develop trigger points for Stumpy Point Evacuation. 4. Contain the fire within established boundaries for indirect attack suppression strategy, using burn out fires as needed. 5. Assess the ability to open Dare Bomb Range to military operations on a daily basis. 			
<u>Operational Objectives:</u>			
<ol style="list-style-type: none"> 1. Prepare indirect fire lines along Longcurve, Faircloth, Air Force Perimeter, and Stomper Roads for burn out operations. 2. Establish trigger points for burn out operations in Divisions D and E. 3. Patrol and monitor fire line along Lake Worth Road and complete burn out. 4. Hold fire north of US 264 in Division A where possible. 			
6. Weather Forecast For Period			
See Attached Tailgate Safety Briefing Sheet.			
7. General Safety Message			
See Attached Tailgate Safety Briefing Sheet.			
8. Attachments (mark if attached)			
<ul style="list-style-type: none"> ✓ Organizational List – ICS 203 ✓ Div. Assignment Lists - ICS 204 ✓ Air Operations Summary- ICS 220 ✓ Communications Plan - ICS 205 ✓ Medical Plan - ICS 206 		<ul style="list-style-type: none"> ✓ Contact List ✓ Incident Map ✓ Tailgate Safety Briefing Sheet ✓ Unit Log - ICS 214 	
9. Prepared by (Planning Section Chief)		10. Approved by (Incident Commander)	

ORGANIZATION ASSIGNMENT LIST		9. Operations Section		
1. Incident Name Pains Bay Fire NC-ALR-111006		Chief	Danny Bryant Lea Wofford Ned Brickhouse	
			Barry Garten (T) Bill Woodyard (T)	
		a. Branch I - Divisions/Groups		
2. Date	5/10/2011	Division/Group	A, E	Jay Collett Chris Schow
		Division/Group	B	
4. Operational Period 5/11/2011 0730-1930hrs		Division/Group	C	Dwight Snow Rob Wood (T)
5. Incident Commander and Staff				
Incident Commander	Mike Quesinberry Greg Pate (NCFS)	Division/Group	D	Larry Lockett Vince Carver (T) M. Gibbs (T)
Safety Officer	Patrick Sheridan Steven Counts (T) Bruce Fitzpatrick Alan Farnsworth	Division/Group	SP	Michael Armendarez
Information Officer	Bill Sweet	ICT3	A,E, C	James Cherry
6. Agency Representatives		b. Branch II - Divisions/Groups		
Agency	Name	Branch Director		
FWS	Mike Byrant	Deputy		
FWS	Scott Lanier	Division/Group		
NCFS	Ed Christopher	Division/Group		
FWS	Bonnie Strawser	Division/Group		
7. Planning Section		Division/Group		
Chief	Tom Lowry	c. Branch III - Divisions/Groups		
Resources Unit	Dan Belanger Sue Wilder (T)	Branch Director		
Situation Unit	Stephen Smith	Deputy		
Fire Behavior Analyst	Michael Durfee Scott Ludlum	Division/Group		
Demobilization Unit	Henry Hickerson	Division/Group		
GIS	Laura Pickens	Division/Group		
GIS	Scott Hamlet			
CTSP	Debra Croston	d. Air Operations Branch		
CTSP (T)	Lori Gale	Air Attack Group Supervisor		
Status Check-In	Pat (Choo-Choo) McKnight	Air Operations Branch Director		Terry Harris
8. Logistics Section		Air Support Group Supervisor		Michael Mowery
Chief	Bill Lisowsky	Air Tactical Group Supervisor		
Deputy Chief	John Bellemore			
Supply Unit	Cindy Schiffer			
Ground Support Unit	Tim Suthard	10. Finance Section		
Security Manager	Teddy Mullins	Chief	Elizabeth Kinney	
Communications Unit	Claude Gilleland	Comp/Time	Ruthi Blackman	
Medical Unit	Alice Barnett	Cost	Robert Gross	
Ordering Manager	Sandy Rhodes	Time	Bonnie Amaral	
Equipment	Ralph DeWeese			
		Prepared by: Sue Wilder (T)		

DIVISION ASSIGNMENT LIST		1. Ops Chief Lea Wofford Danny Byrant Ned Brickhouse Barry Garten (T) Bill Woodyard (T)		2. Division/Group Division A, E			
3. Incident Name PAINS BAY FIRE		4. Operational Period Date: 5/11/2011 Time: 0730-1930hrs					
5. Operations Personnel							
Division/Group Supervisor	Jay Collett Chris Schow	Safety	Pat Sheridan Steve Counts (T)				
ICT3-IA	James Cherry						
6. Resources Assigned this Period							
Strike Team/Task Force/ Resource Designator	Leader	Number Persons	Trans. Needed	Drop Off PT./Time	Pick Up PT./Time		
TFLD	A. Axelrod	1	NO	0730hrs	1930hrs		
T6 ENG; E13; SC-FMF	J. Neville	3	NO	0730hrs	1930hrs		
T6 ENG; E15; SMFR#1	M. Scroggs	3	NO	0730hrs	1930hrs		
T6 ENG; E16; SMFR#2	G. Bartlette	3	NO	0730hrs	1930hrs		
T6 ENG; E10;MARIENVILLE	C. Kostrzewski	3	NO	0730hrs	1930hrs		
Flex Trac; AX2FT	J. Swain/R. Nordsvan	2	NO	0730hrs	1930hrs		
Flex Trac; AX4FT	B. Govan/M. Howle	2	NO	0730hrs	1930hrs		
HC2IA; C1; PAS#1	J. Hecker	20	NO	0730hrs	1930hrs		
WT; E20	F. Gale	1	NO	0730hrs	1930hrs		
SOF2	A. Farnsworth	1	NO	0730hrs	1930hrs		
7. Control Operations <ul style="list-style-type: none"> Keep fire north of Hwy 264, east of Stomper, Perimeter and Faircloth Roads. Mop-up spots along Pamlico Road and Hwy 264. 							
8. Special Instructions <ul style="list-style-type: none"> Contract crew will be working on phone line repair in DIVS B. AX2FT and AX4FT- be prepared for IA with ICT3-IA J. Cherry. EMT on HC2IA PAS#1. 							
9. Division/Group Communication Summary							
Function	Frequency	System	Channel	Function	Frequency	System	Channel
Command		KING NIFC	12 OR 14	Logistics		KING NIFC	
Tactical Div/Group		KING NIFC	4	Air to Ground		KING NIFC	8
Prepared by (Resource Unit Leader) Sue Wilder RESL (T)		Approved by (Planning Section Chief) Tom Lowry PSC1		Date 05/10/2011		Time 1830hrs	

DIVISION ASSIGNMENT LIST		1. Ops Chief Lea Wofford Danny Byrant Ned Brickhouse Barry Garten (T) Bill Woodyard (T)		2. Division/Group Division B			
3. Incident Name PAINS BAY FIRE		4. Operational Period <i>Date:</i> 5/11/2011 <i>Time:</i> 0730-1930hrs					
5. <i>Operations Personnel</i>							
Division/Group Supervisor		Safety		Pat Sheridan/ Steve Counts (T)			
6. <i>Resources Assigned this Period</i>							
Strike Team/Task Force/ Resource Designator	Leader	Number Persons	Trans. Needed	Drop Off PT./Time	Pick Up PT./Time		
UNSTAFFED							
7. Control Operations <ul style="list-style-type: none"> Keep fire north of Hwy 264, east of Stomper, Perimeter and Faircloth Roads. 							
8. Special Instructions <ul style="list-style-type: none"> Contract crew will be working on phone line repair. 							
9. <i>Division/Group Communication Summary</i>							
Function	Frequency	System	Channel	Function	Frequency	System	Channel
Command		KING NIFC		Logistics		KING NIFC	
Tactical Div/Group		KING NIFC		Air to Ground		KING NIFC	
Prepared by (Resource Unit Leader) Sue Wilder RESL (T)		Approved by (Planning Section Chief) Tom Lowry PSC1			Date 05/10/2011		Time 1830hrs

DIVISION ASSIGNMENT LIST		1. Ops Chief Lea Wofford Danny Byrant Ned Brickhouse Barry Garten (T) Bill Woodyard (T)		2. Division/Group Division C			
3. Incident Name PAINS BAY FIRE		4. Operational Period Date: 5/11/2011 Time: 0730-1930hrs					
5. Operations Personnel							
Division/Group Supervisor		Dwight Snow Rob Wood(T)		Safety		Pat Sheridan/ Steve Counts (T)	
ICT3- IA		James Cherry					
6. Resources Assigned this Period							
Strike Team/Task Force/ Resource Designator		Leader		Number Persons	Trans. Needed	Drop Off PT./Time	Pick Up PT./Time
STEN		B. Hinton		1	NO	0730hrs	1930hrs
T6 ENG; Mackay 8		J. Black		2	NO	0730hrs	1930hrs
T6 ENG; Mattamuskeet		Beckwith/B.Mickler		2	NO	0730hrs	1930hrs
T6 ENG; PLE2		Davis		2	NO	0730hrs	1930hrs
T6 ENG; E9; VA-SHP		C. Rudacille		3	NO	0730hrs	1930hrs
WT; E21		L. Bartlett		1	NO	0730hrs	1930hrs
SOF2		D. Brassard		1	NO	0730hrs	1930hrs
7. Control Operations							
<ul style="list-style-type: none"> • Keep fire south of Lake Worth Road and west of Long Curve Road. • Secure, hold and mop-up along Long Curve Road and Flex Trac Line. 							
8. Special Instructions							
<ul style="list-style-type: none"> • PLE2 and Mackay 8 - be prepared for IA with ICT3-IA J. Cherry. • Contract crew will be working on phone line repair in DIVS B. 							
9. Division/Group Communication Summary							
Function	Frequency	System	Channel	Function	Frequency	System	Channel
Command		KING NIFC	12 or 14	Logistics		KING NIFC	
Tactical Div/Group		KING NIFC	1	Air to Ground		KING NIFC	8
Prepared by (Resource Unit Leader) Sue Wilder RESL (T)		Approved by (Planning Section Chief) Tom Lowry PSC1			Date 05/10/2011		Time 1830hrs

DIVISION ASSIGNMENT LIST		1. Ops Chief Lea Wofford Danny Byrant Ned Brickhouse Barry Garten (T) Bill Woodyard (T)		2. Division/Group Division D			
3. Incident Name PAINS BAY FIRE		4. Operational Period Date: 5/11/2011 Time: 0730-1930hrs					
5. Operations Personnel							
Division/Group Supervisor	Larry Lockett Vince Carver (T) Marshal Gibbs (T)	Safety	Pat Sheridan/ Steve Counts (T)				
6. Resources Assigned this Period							
Strike Team/Task Force/ Resource Designator	Leader	Number Persons	Trans. Needed	Drop Off PT./Time	Pick Up PT./Time		
Excavator; NCFS	T. Terrell	1	NO	0730hrs	1930hrs		
Grader; NCFS	T. Harrell	1	NO	0730hrs	1930hrs		
T2DOZ; PLE3	M. Walston	1	NO	0730hrs	1930hrs		
STPL	A. Hux	1	NO	0730hrs	1930hrs		
Flex Trac; E33;13X2; NCFS	C. Gibbs/A. Harris	2	NO	0730hrs	1930hrs		
Flex Trac; 13X64; NCFS	B. Bryant/Page	2	NO	0730hrs	1930hrs		
Marsh Master; NCFS	A. Mann	1	NO	0730hrs	1930hrs		
STEN	J. Hinton	1	NO	0730hrs	1930hrs		
T6 ENG; E12; PATRICK ENV	C. Gilpin	2	NO	0730hrs	1930hrs		
T6 ENG; E17; Croatan 33	A. Hill	2	NO	0730hrs	1930hrs		
T6 ENG; E5; NC-NCF	B. Jones/ Thomas (T)	3	NO	0730hrs	1930hrs		
SOF2	B. Fitzpatrick	1	NO	0730hrs	1930hrs		
7. Control Operations <ul style="list-style-type: none"> • Continue line prep along Jackson Road. • Secure, hold and mop-up along Jackson Road. 							
8. Special Instructions							
9. Division/Group Communication Summary							
Function	Frequency	System	Channel	Function	Frequency	System	Channel
Command		KING NIFC	12 or 14	Logistics		KING NIFC	
Tactical Div/Group		KING NIFC	2	Air to Ground		KING NIFC	8
Prepared by (Resource Unit Leader) Sue Wilder RESL (T)	Approved by (Planning Section Chief) Tom Lowry PSC1			Date 05/10/2011	Time 1830hrs		

DIVISION ASSIGNMENT LIST		1. Ops Chief Lea Wofford Danny Byrant Ned Brickhouse Barry Garten (T) Bill Woodyard (T)		2. Division/Group Division Structure Protection			
3. Incident Name PAINS BAY FIRE		4. Operational Period <i>Date:</i> 5/11/2011 <i>Time:</i> 0730-1930hrs					
5. <i>Operations Personnel</i>							
Division/Group Supervisor		Michael Armendarez		Safety		Pat Sheridan/ Steve Counts (T)	
6. <i>Resources Assigned this Period</i>							
Strike Team/Task Force/ Resource Designator	Leader		Number Persons	Trans. Needed	Drop Off PT./Time		Pick Up PT./Time
TFLD	R. Shackelford		1	NO	07300hrs		1930hrs
Marsh Master; ALR1	Powers		1	NO	07300hrs		1930hrs
ENG; Stumpy VFD	Price		4	NO	07300hrs		1930hrs
ENG; Manns Harbor VFD	Gard		5	NO	07300hrs		1930hrs
ENG; Roanoke Island VFD			4	NO	07300hrs		1930hrs
Support Truck; Collington VFD			3	NO	07300hrs		1930hrs
7. Control Operations							
8. Special Instructions							
9. <i>Division/Group Communication Summary</i>							
Function	Frequency	System	Channel	Function	Frequency	System	Channel
Command		KING NIFC	12 or 14	Logistics		KING NIFC	
Tactical Div/Group		KING NIFC	3	Air to Ground		KING NIFC	8
Prepared by (Resource Unit Leader) Sue Wilder RESL (T)		Approved by (Planning Section Chief) Tom Lowry PSC1			Date 05/10/2011		Time 1830hrs

AIR OPERATIONS SUMMARY		PREPARED BY: Terry Harris			PREPARED DATE/TIME: 5/10//2011 1700			
1. INCIDENT NAME Pains Bay Fire		2. OPERATIONAL PERIOD DATE: 5/11/2011			START TIME: 0800	END TIME: 2000	SUNRISE: 6:08 AM	SUNSET: 19:51 PM
3. REMARKS (Safety Notes, Hazards, Air Operations Special Equipment, etc.) -PILOTS-WATCH FOR BIRDS AND OTHER AIRCRAFT -BE ALERT FOR HIGH WINDS AND TURBULANCE -NOTE THAT SOME TOWERS ARE NOT MARKED ON SECTIONAL MAPS. TOWERS COULD BE UP TO 2500 FEET TALL -ALL FIREFIGHTING AIRCRAFT NEED TO SQUAWK 1255. FLY WITH LIGHTS ON. -HEADS UP WHEN PERFORMING WATER DROPS AROUND CREWS ON THE GROUND -MAINTAIN CLEAR COMMUNICATIONS -CREWS STAY AWAY FROM WATER DROPS INCLUDING APPROACH AND DEPARTURES -AIRCRAFT WILL BE ORDERED AND DISPATCHED UTILIZING LATITUDE AND LONGITUDE-DEGREES, MINUTES, SECONDS -AIRCRAFT PRIORITIES 1. PUBLIC AND FIREFIGHTER SAFETY 2.PROTECTION OF PROPERTY AND RESOURCES 3. INITIAL ATTACK 4.POTENTIAL PROBLEM FIRES 5. UNSTAFFED FIRES 6. PARACHUTISTS AT HELIBASE (DARE COUNTY AIRPORT) FDC 1/ 1586 POLYGON 3100 MSL PAINS BAY IF FILLING A SAFECOM PLEASE NOTIFY AIR OPERATIONS BRANCH					4. MEDEVAC A/C:		5. TFR: 1. DETERMINE THE NEED FOR TFR. 2. IMMEDIATE NOTIFICATION OF INTRUSIONS ARE TO BE PLACED WITH THE FAA.	
6. PERSONNEL		Phone	7. FREQUENCIES		AM	FM	8. FIXED WING # Available/ Type/ Make-Model/FAA N# / Bases	
AOBD: Terry Harris ASGS: Mike Mowery		936-366-4239 870-214-0034	AIR/AIR PRIMARY AIR/AIR SECONDARY NATIONAL FLIGHT FOLLOWING (NARROW BAND) ATGS/LEAD/ASM TRANSITION-HANDOFF		123.125 122.425		Airtankers ALLIGATOR RIVER DISPATCH 252-473-1744 X 21	
ATGS: Brian Connolly ATGS (t) : Donnie Harris		541-419-5109 252-475-8012	AIR/AIR RW: SEE ABOVE					
HLCO: NONE			AIR/GROUND: Primary AIR/GROUND: Secondry			Rx 171.575 N Tx 171.575 Tone 131.8 169.925		
			COMMAND: (Simplex)				Leadplanes	
HEB1: David Zuares		208-841-8022	COMMAND RPT SEE ICS 205		Rx:	Tx:		
			DECK FREQ:			168.6125	ATGS Aircraft N113AR (Connolly)	
			TOLC FREQ:					
			FOR ENTERING DARE BOMBING RANGE		122.900		Other: SEAT	

DARE BOMBING RANGE				USE WHEN ENTERING RANGE AIRSPACE	122.900								
9. HELICOPTERS (Use Additional Sheets As Necessary)													
FAA N#	TY	MAKE/MODEL	BASE	AVAIL	START	REMARKS	FAA N#	TY	MAKE/MODEL	BASE	AVAIL	START	REMARKS
N905CH	1	SIKORSKY S-61-N	MQI		0900	ALBERT NEWMAN 928-606-5101							
N828HA	3	Bell 206	MQI		0800	KYLE KRZYWICKI 757-617-4970							
N14HX	3	Bell 407	MQI		0800	BOB MADISON 505-385-0401							

AIR OPERATIONS SUMMARY					
10. TASK/MISSION/ASSIGNMENT (Type/Function includes Air Tactical, Retardant, Recon, Personnel Transport, Water Dropping, S&R, etc.)					
			MISSION START	FLY FROM	FLY TO

Incident Radio Communications Plan		1. Incident Name: Pains Bay		2. Date/Time Prepared: 05/10/11 1430 hrs		3. Operational Period (Date/Time) 5/11/11	
4. Basic Radio Channel Utilization							
System/Cache	Channel	Function	Frequency/Tone	Assignment	Remarks		
NC Forest Service	CH 1	TAC 1	RX 151.400WIDE TX 151.400W Tone 136.5	Div C			
NC Forest Service	CH 2	TAC 2	RX 151.460W TX 151.460W Tone 136.5	Div D			
NC Forest Service	CH 3	TAC 3	RX 151.310W TX 151.310W Tone 136.5	MECH/Structure Protection			
NIFC	CH 4	TAC 4	RX 168.050N TX 168.050 NARROW				
NIFC	CH 5	TAC 5	RX 168.200N TX 168.200N				
NIFC	CH 6	TAC 6	RX 168.600N TX 168.600N				
NIFC	CH 7	TAC 7	RX/TX 163.100N				
NIFC	CH 8	US FWS AIR TO GROUND	RX 171.575N TX 171.575 Tone 131.8	Fire Line			
TFS	CH 9	TAC 9	168.350N	FIRE LINE TAC			
NIFC	CH 10				Out of service		
US FWS	CH 11	COLUMBIA CMD REPEATER 11	RX 172.675 N TX 168.500 N Tone 118.8		North		
US FWS	CH 12	ENGLEHART CMD REPEATER 12	RX 164.625N TX 163.150 Tone 186.2		South		
US FWS	Ch 13	TAC 13	TX/RX 162.2375N TONE 156.7				
NIFC	CH14	CMD Repeater 14	RX 167.10-N TX 169.750N TONE 146.2		Located at Stumpy Point		
AIR TO GROUND	Ch 15	AIR TO GROUND Secondary	RX/TX 169.925				
AIR GUARD	Ch 16	Air Guard	RX/TX 168.625 TX Tone 110.9	Emergency contact with Aircraft			
Communications		Comm Unit	678-316-4615	Claude Gilleland			
ICS 205	5. Prepared By (Communications Unit Leader): Claude Gilleland						

MEDICAL PLAN	1. Incident Name Pains Bay Fire	2. Date Prepared 05/10/11	3. Time Prepared 1530	4. Operational Period 05/11/11 0730-1930	
5. Incident Medical Aid Station					
Medical Aid Stations	Location			Paramedics Yes No	
Mann Harbor VFD Community Bldg (0900-1830hrs)	6677 Hwy 64 Business Mann Harbor			X	
Stumpy Point VFD (0730-0830hrs)	Stumpy Point			X	
Thomas Christian EMTP (0800 to 2000hrs)	Staged at NCDFR Maintenance Bldg			X	
6. Transportation					
A. Ambulance Services					
Name	Address	Phone	Paramedics Yes No		
Dare County EMS Station #8	6677 Hwy 64 Business, Mann Harbor, NC	Dare Central (911)	X		
Dare County Med Flight	1078 Driftwood Dr., Manteo, NC	911	X		
B. Incident Ambulances					
Name	Location			Paramedics Yes No	
7. Hospitals					
Name	Address	Travel Time Air Ground	Phone	Helipad Yes No	Burn Center Yes No
Outer Banks Hospital	Mile Post 14, 4800 S. Croatan Hwy Nags Head, NC Latitude: N 35° 56' 20.33" Longitude: W 75°45' 5.89"	15 30	(252) 449-4500	X	X
Sentara Lee Burn Center	Norfolk, VA	30 90	(757) 668-3117	X	X
8. Medical Emergency Procedures					
<p>Report all injuries and illnesses to the closest DIVS. DIVS will notify ICP Communications and include the extent of the injury and transportation needed. A medical emergency should be declared over the radio immediately. All radio traffic will be kept to a minimum so emergency procedures can proceed uninhibited. ICP Communications will notify Dare Central Dispatch (911) and MEDL. Safety will be notified. Dare County EMS will respond and determine the appropriate treatment, transportation and facility needed. If ground transportation is determined, if possible assign personnel to meet the ambulance at a location that is easily accessible to lead them to the site of the injured. If patient is transported to meet EMS personnel needs to remain with patient until EMS has arrived.</p> <p>Non emergencies will be treated at the Medical Unit located at ICP or transported to the local clinic.</p>					
Prepared by (Medical Unit Leader) Alice Barnette, MEDL cell: (404-354-6005) 24hrs			10. Reviewed by (Safety Officer) Pat Sheridan/ Steve Counts (T)		

PAINS BAY FIRE CONTACT LIST May 11, 2011

Name	Position	Phone
COMMAND		
Quesinberry, Mike	ICT1	540-230-1262
Pate, Greg NCFS	IC-NCFS	252-560-5018
Sheridan, Patrick	SOF1	540-968-6193
Counts, Steve	SOF1(T)	276-608-7997
Sweet, Bill	PIO1	404-354-5799
FWS		
Byrant, Mike	Project Leader-NWRs	
		252-216-7505
Lanier, Scott	Deputy Proj Leader- NWRs	
		252-216-7506
Alligator River NWR		252-473-1131
Dare County Sheriff		252-473-3444
Czernik, Helen		252-475-8339
Strawser, Bonnie	PIO2	252-216-8667
COOPERATORS		
Price, RD	Chief, Stumpy Pt Fire Dept	
		252-216-7146
Price, Curtis	Dpty Chief, Stumpy Pt FD	
	cell	252-216-7094
	home	252-475-1040
Sanderson, Sandy	Emergency Mgmt Coord	
		252-473-8326
Shackelford, Rob	NCFS	252-216-5271
	home	252-216-8800
	office	252-473-2531
Patterson, Karen	IBS NCFS	919-218-2586
Christopher, Ed	NCFS	252-542-0119
OPERATIONS		
Wofford, Lea	OSC1	404-909-0240
Bryant, Danny	OSC1	601-500-2505
Garten, Barry	OSC1 (t)	404-304-3725
Woodyard, Bill	OSC1 (t)	432-244-9508
Sanders, Greg	OSC2	540-529-3376
Luckette, Larry	DIVS	770-718-7064
Collett, Jay	DIVS	540-292-1038
Snow, Dwight	DIVS	352-516-4969
Crews, Tom	ICT3	252-475-4269

Name	Position	Phone
AIR OPERATIONS		
Harris, Terry	AOBD	936-366-4239
Mowery, Mike	ASGS	870-214-0034
DISPATCH		
NWR Dispatch		252-473-1744 x 21
NWR Dispatch		252-473-1744 x 22
PLANS		
Lowry, Tom	PSC1	918-429-4258
Smith, Steve	SITL	405-206-1854
Belanger, Dan	RESL	828-231-1529
Wilder, Sue	RESL(t)	985-373-1199
McKnight, Pat (Choo-Choo)	SCKN	570-862-6321
Hickerson, Henry	DMOB	540-798-1610
Croston, Debra	CTSP	570-352-2664
Gale, Lori	CTSP(t)	603-520-0243
Durfee, Michael	FBAN	973-632-4239
Ludlum, Scott	FBAN	252-903-8007
Pickens, Laura	GISS	252-475-0153
Hamlet, Scott	GISS	918-448-3111
FINANCE		
Kinney, Liz	FSC1	404-354-6100
Gross, Robert	COST	207-592-3416
Blackman, Ruthi	COMP	404-354-6287
Kinder, Glen	PROC	970-217-0235
Amaral, Bonnie	TIME	828-779-2067
LOGISTICS		
Lisowsky, Bill	LSC1	270-748-0253
Bellemore, John	LSC2	404-354-7320
Rhodes, Sandy	ORDM	501-574-8730
Schiffer, Cindy	SPUL	540-230-1269
Suthard, Tim	GSUL	828-371-7966
DeWeese, Ralph	EQPM	662-633-0607
Gilleland, Claude	COML	678-316-4615
Barnett, Alice	MEDL	404-354-6005
Christian, Thomas	EMTP	404-354-5878
Mullins, Teddy	SECM	540-239-2175
Borel, Lisa	DRIV	252-216-8218
Collins, Jessica	DRIV	952-475-8351

IAP Map



Pains Bay Fire
NC-ALR-111006 | PRF3FT

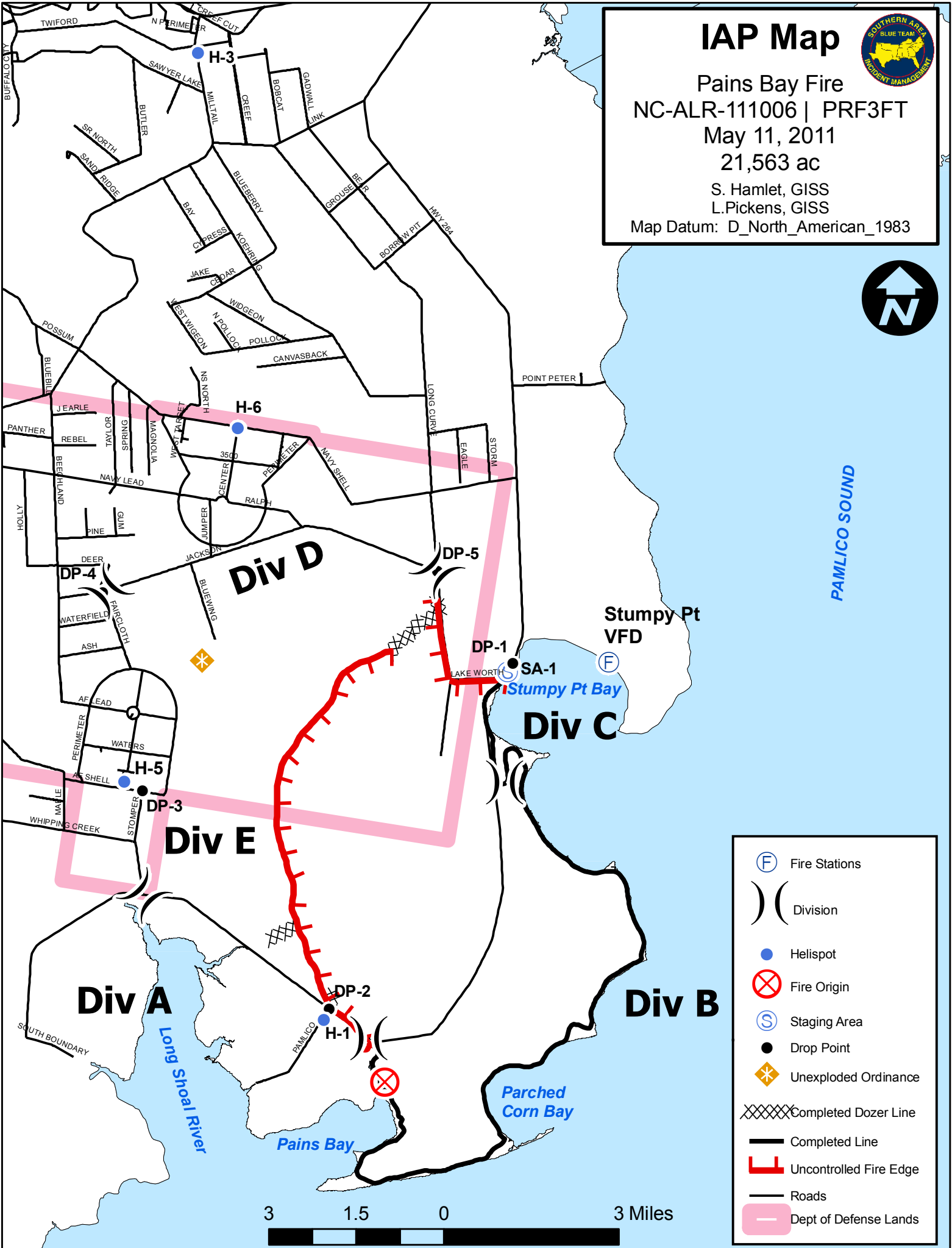
May 11, 2011

21,563 ac

S. Hamlet, GISS

L. Pickens, GISS

Map Datum: D_North_American_1983



WEATHER FORECAST - Wednesday day shift 5/11/11

Jim Merrell – Incident Meteorologist

WEATHER DISCUSSION

High pressure will extend over the area from the north through Thursday, then move southeast Friday. Low pressure will approach from the west Saturday and Sunday, then move slowly across to the southwest and south Monday and Tuesday. An associated frontal boundary will be near the area Sunday through Tuesday.

WEATHER FORECAST – Wednesday

Weather: Patchy smoke/fog early, then partly cloudy.

Temperatures: Maximum near 75 around 1300.

Humidity: Minimum 35 percent around 1300.

20 FT winds: Northeast 10-15 mph gusting to 20 mph.

Haines Index: 5.

Stability/Inversion: Inversion burning off by 0900. Mixing height 6000 ft agl. Transport wind N 17-20 mph.

Forecast for Wednesday night

Partly cloudy. Minimum temperature 45-50. Maximum RH 90-100 percent. Winds northeast 2-5 mph.

OUTLOOK FOR THURSDAY

Partly cloudy. Maximum temperature around 73. Minimum RH around 40 percent. Winds northeast 5-10 mph becoming east.

EXTENDED FORECAST: Friday-Tuesday

Partly cloudy Friday. Highs in the mid 70s. Lows 50-55. East-southeast winds 5-10 mph. Minimum RH around 40 percent.

Mostly cloudy with a chance of showers and thunderstorms Friday night through Tuesday. Highs around 80.

Lows around 60. South winds 10-15 mph. Rainfall amounts one quarter to one half inch possible. Minimum RH 50-60 percent.

 FIRE BEHAVIOR - Wednesday Day Shift - May 11, 2011

FBAN – Michael Durfee, Scott Ludlum 5/10/2011 - 19:00

Fire Behavior Discussion -

With NW-NE winds today, the rates of spread along with TORCHING occurring in the Tall Brush (High Pocosin) fuels will be similar to observed and predicted for Yesterday. There is low to moderate ground fire activity (mostly in the heavy fuels). Ground fuels are moist at appx 8-12 inches. Fire should not go deeper than that except where heavy fuels are buried and burning out.

Tall Brush (High Pocosin) – ROS: 40-90 chains / hr FL: 16-20 feet Spotting Distance 0.2 – 0.5 miles POI 47%

Southern Rough (Brush with Pine Overstory) – ROS: 25-30 chains / hr FL: 5-6 feet Spotting Distance 0.2 miles POI 47%

DIVS A, C and D: Similar burning as yesterday could occur in unburned pockets of fuels.

DIVS B, E: Minimal fire activity (smoldering and ground fire in available fuels) should be expected across these divisions..

Watch for hot fuel pockets and any stump, root, or peat holes if walking in the black.

Watch for Fog in the early morning and late evening.

□ **SAFETY MESSAGE: Steve Counts (T)/ Pat Sheridan**

HAZARDS/MITIGATIONS TODAY

We have had reports of fire vehicles speeding on Highway 264. There is no reason to drive faster than reasonable for road conditions. Watch your speed especially in smoke, dust, and near the road blocks. Slow down near stopped engines or equipment and near personnel.

Use headlights and seat belts at all times.

Keep in mind that even though roads are closed there is still traffic using the highway.

Continuously monitor fire behavior and weather conditions. Have someone take fire weather at least hourly and broadcast it on your TAC channel.

Watch your footing on the fireline. Look out for tripping hazards, snakes, and hot spots.

MAINTAIN SITUATIONAL AWARENESS- You should always know what the fire is doing and have a plan on how you will disengage. Look at your escape route and know how long it will take to get to your safety zone.

We want you to go home to your family the same way you left. This is your **first responsibility.**

UNIT LOG	1. Incident Name	2. Date Prepared	3. Time Prepared
4. Unit Name/Designators	5. Unit Leader (Name and Position)		6. Operational Period
7. Personnel Roster Assigned			
Name	ICS Position	Home Base	
8. Activity Log			
Time	Major Events		
9. Prepared by (Name and Position)			