

PAINS BAY FIRE

NC-ALR-111006
PRF3FT (1502)



Incident Action Plan

TUESDAY

May 17, 2011

0730-1930 hrs



INCIDENT OBJECTIVES	1. Incident Name PAINS BAY FIRE	2. Date Prepared 5/16/2011	3. Time Prepared 2000hrs
4. Operational Period Tuesday, May 17, 2011 0730 to 1930 hrs			
5. General Control Objectives For The Incident (Include Alternatives) <ol style="list-style-type: none"> 1. Provide for the safety of firefighters and general public by adherence to the 10 standard fire orders, 18 watch-out situations, in addition to maintaining direct and clear communications with all incident personnel and the general public. 2. Keep fire contained within established boundaries for indirect attack suppression strategy. Use burnout trigger points in event of fire escaping current containment lines. 3. Implement established evacuation plan to provide for safety of Stumpy Point Community, if trigger points are met. 4. Keep general public & local officials in affected counties, as well as incident stake holders informed of fire status through situation updates and personal contacts at least every other day. 5. Provide for accurate cost tracking and documentation of incident in accordance with IBH (Incident Business Handbook) procedures. 6. Ensure that suppression & containment strategies on FWS property follow minimum impact suppression tactics. Escalation of tactics should consider amount of progress being made with current tactics, and the likelihood of those tactics being successful. 			
6. Weather Forecast For Period See Attached Tailgate Safety Briefing Sheet.			
7. General Safety Message See Attached Tailgate Safety Briefing Sheet.			
8. Attachments (mark if attached)			
<ul style="list-style-type: none"> ✓ Organizational List – ICS 203 ✓ Div. Assignment Lists - ICS 204 ✓ Air Operations Summary- ICS 220 ✓ Communications Plan - ICS 205 ✓ Medical Plan - ICS 206 		<ul style="list-style-type: none"> ✓ Contact List ✓ Incident Map ✓ Tailgate Safety Briefing Sheet ✓ Unit Log - ICS 214 	
9. Prepared by (Planning Section Chief)		10. Approved by (Incident Commander)	

ORGANIZATION ASSIGNMENT LIST		9. Operations Section	
1. Incident Name Pains Bay Fire NC-ALR-111006		Chief	Jeff Burns Shane Hardee
		a. Branch I - Divisions/Groups	
2. Date 5/16/2011	3. Time 1500hrs	Division/Group	A, B Jay Collett
		Division/Group	C Chris Schow Rob Wood (T)
4. Operational Period 5/17/2011 0730-1930hrs		Division/Group	D, E Rickie Darden
5. Incident Commander and Staff		Division/Group	SP Rickie Darden
Incident Commander	Robert Smith		
Safety Officer	Mike Kretzschmar Tom White	Division/Group	IA Derrick Moore
Information Officer	Roger Miller Chris Carlson	Division/Group	Water Handling Hagan Blake
Liason Officer	Mike Huffman		
6 a. Agency Administrators		b. Branch II - Divisions/Groups	
FWS	Mike Byrant	Branch Director	
FWS	Scott Lanier	Deputy	
b. Agency Representatives		Division/Group	
FWS	Tom Crews	c. Branch III - Divisions/Groups	
NCFS	Ed Christopher	Branch Director	
FWS	Bonnie Strawser	Deputy	
FWS	Vince Carver	Division/Group	
7. Planning Section			
Chief	Laura Prevatte Bill Pickens	d. Air Operations Branch	
Resources Unit	Lisa Hartrick, Gail Bledsoe	Air Ops Branch Director	Sherry Tomlinson
Status Check-in	Brian Yeich, Pat McKnight	Air Support Group Sup	Marshall Plue
Situation Unit	Greg Hicks	10. Finance Section	
FOBS	Teresa Hurdle, Bill DeMay, Adam Huffman, Jamie Dunbar	Chief	Teresa Tripp
IMET	Jim Merrell	Equipment	Susan Baker
Fire Behavior Analyst	Scott Ludlum	Cost	Louise Faustini
Demobilization Unit	Rob Trickle	Time	Mary Plummer
GIS	Laura Pickens, Walter Powell	PROC	Renee Hall
CTSP	Tom James	Incident Business Advisor	Karen Patterson
8. Logistics Section			
Chief	Roger Harris, Neil Barrow		
Receiving Manager	Derek Arney		
Supply Unit	Kevin Pittman		
Ground Support Unit	Jeff McPherson		
Security Manager	Richard Jenkins		
Communications Unit	Sam Bodenhamer		
Communications Tech	Chuck Credle, Frank Taylor		
RADO	Eric Welker		
Medical Unit	John Weaver, Randy Kearney(T)	Prepared by: Lisa Hartrick, RESL	
Ordering Manager	Patrick Raynor, Susan Fay(T)		
Equipment	Gavin Bell, Martin Evans, Ralph DeWeese		
Facilities	Alton Perry		
Food Unit	Les Hunter		

DIVISION ASSIGNMENT LIST		1. Ops Chief Shane Hardee (T) Planning OPS – Jeff Burns		2. Division/Group Division A, B			
3. Incident Name PAINS BAY FIRE		4. Operational Period Date: 5/17/2011 Time: 0730-1930hrs					
5. Operations Personnel							
Division/Group Supervisor	Jay Collett	Safety	Mike Kretzschmar, Tom White				
6. Resources Assigned this Period							
Strike Team/Task Force/ Resource Designator	Leader	Number Persons	Trans. Needed	Drop Off PT./Time	Pick Up PT./Time		
STEN	B. Hinton	1	NO	0730hrs	1930hrs		
T6 ENG; E13; SC-FMF	M. Halford	3	NO	0730hrs	1930hrs		
T6 ENG; E15; SMFR#1	M. Scroggs	3	NO	0730hrs	1930hrs		
T6 ENG; E16; SMFR#2	G. Bartlett	2	NO	0730hrs	1930hrs		
T6 ENG; E10; PA-ALF	C. Kostrzewski	3	NO	0730hrs	1930hrs		
TFLD	A. Axelrod	1	NO	0730hrs	1930hrs		
TFLD (T)	J. Neville	1	NO	0730hrs	1930hrs		
T6 ENG; E14; IL-SHF	T. Taylor	3	NO	0730hrs	1930hrs		
T6 ENG; E8; VA-VAF	T. Caudill	3	NO	0730hrs	1930hrs		
T6 ENG; E6; VA-VAF	L. Shaw	3	NO	0730hrs	1930hrs		
T6 ENG; E5; NC-NCF	B. Jones/ Thomas (T)	3	NO	0730hrs	1930hrs		
T6 ENG; E9; VA-SHP	B. Miller	3	NO	0730hrs	1930hrs		
WT; E20	D. Gay	1	NO	0730hrs	1930hrs		
SOF2	A. Farnsworth	1	NO	0730hrs	1930hrs		
Flex Trac; AX4FT*	Out of service	0	NO	0730hrs	1930hrs		
7. Control Operations							
<ul style="list-style-type: none"> Secure, hold and mop-up along Hwy 264. 							
8. Special Instructions							
<ul style="list-style-type: none"> PLE2 and AX2FT - prepared for IA and available to assist Division A,B. If Initial Attack occurs, IA will meet ICT3-IA Moore at DP1. EMT on HC2IA PAS#1 (Barry Mohler) and EMT on E15 (Matthew Bartlett). *AX4FT out of service. Limit use of foam within 300 ft of any water source. 							
9. Division/Group Communication Summary							
Function	Frequency	System	Channel	Function	Frequency	System	Channel
Command		KING NIFC	12 OR 14	Initial Attack		KING NIFC	5
Tactical Div/Group		KING NIFC	4	Air to Ground		KING NIFC	8
Prepared by (Resource Unit Leader) Lisa Hartrick	Approved by (Planning Section Chief) Laura Prevatte			Date 05/16/2011	Time 2130 hrs		

DIVISION ASSIGNMENT LIST		1. Ops Chief Shane Hardee (T) Planning OPS – Jeff Burns		2. Division/Group Division C			
3. Incident Name PAINS BAY FIRE		4. Operational Period Date: 5/17/2011 Time: 0730-1930hrs					
5. Operations Personnel							
Division/Group Supervisor	Chris Schow Rob Wood(T)	Safety	Mike Kretzchmar, Tom White				
6. Resources Assigned this Period							
Strike Team/Task Force/ Resource Designator	Leader	Number Persons	Trans. Needed	Drop Off PT./Time	Pick Up PT./Time		
T6 ENG; E202; Mattamuskeet	L. Beckwith/ E. Spruill	2	NO	0730hrs	1930hrs		
WT; E21	L. Bartlett	1	NO	0730hrs	1930hrs		
THSP	W. Pugh, A. Gay	2	NO	0730hrs	1930hrs		
Tractor1 with Lift Pump1; NC-DFR		0	NO	0730hrs	1930hrs		
Tractor2 with Lift Pump2; NC-DFR		0	NO	0730hrs	1930hrs		
SOF2	D. Brassard	1	NO	0730hrs	1930hrs		
7. Control Operations							
<ul style="list-style-type: none"> Keep fire south of Lake Worth Road and west of Long Curve Road. Secure, hold and mop-up along Long Curve Road and Flex Trac Line. 							
8. Special Instructions							
<ul style="list-style-type: none"> Mackay 8 prepared for IA and available to assist Division C. IA will meet ICT3-IA R. Darden at DP1. Limit use of foam within 300 ft of any water source. 							
9. Division/Group Communication Summary							
Function	Frequency	System	Channel	Function	Frequency	System	Channel
Command		KING NIFC	12 or 14	Initial Attack		KING NIFC	5
Tactical Div/Group		KING NIFC	1	Air to Ground		KING NIFC	8
Prepared by (Resource Unit Leader) Lisa Hartrick	Approved by (Planning Section Chief) Laura Prevatte			Date 05/16/2011	Time 1930 hrs		

DIVISION ASSIGNMENT LIST			1. Ops Chief Shane Hardee (T) Planning OPS – Jeff Burns		2. Division/Group Division D, E		
3. Incident Name PAINS BAY FIRE			4. Operational Period Date: 5/17/2011 Time: 0730-1930hrs				
5. Operations Personnel							
Division/Group Supervisor		Rickie Darden		Safety		Mike Kretzshmar, Tom White	
6. Resources Assigned this Period							
Strike Team/Task Force/ Resource Designator	Leader		Number Persons	Trans. Needed	Drop Off PT./Time		Pick Up PT./Time
Flex Trac; E33;13X2; NCFS	C. Gibbs/A. Harris		2	NO	0730hrs		1930hrs
Flex Trac; E246; 13X64; NCFS	B. Bryant		1	NO	0730hrs		1930hrs
Marsh Master; NCFS	unstaffed		0	NO	0730hrs		1930hrs
T1DOZ; E226;13X41; NCFS	C. Holyfield		2	NO	0730hrs		1930hrs
T1DOZ; E227; 13X32; NCFS	K. Gibbs		2	NO	0730hrs		1930hrs
T1DOZ; E228; 13X62; NCFS	T. Terrell		2	NO	0730hrs		1930hrs
T2DOZ; E238; 4X21; NCFS	F. Sidbury		2	NO	0730hrs		1930hrs
T2DOZ; E237; 7X41; NCFS	J. O'Neal		2	NO	0730hrs		1930hrs
STEN	J. Hinton		1	NO	0730hrs		1930hrs
T6 ENG; E12; PATRICK ENV	C. Gilpin		3	NO	0730hrs		1930hrs
T6 ENG; E18; Davidson River	M. Stoker		3	NO	0730hrs		1930hrs
SOF2	B. Fitzpatrick		1	NO	0730hrs		1930hrs
7. Control Operations							
<ul style="list-style-type: none"> • Dozers continue potato patching for line improvement along Long Curve Road • Coordinate water supply between Div C and Div D • Assist Div C with mop up along Long Curve Road and Flex Trac Line. 							
8. Special Instructions							
<ul style="list-style-type: none"> • Limit use of foam within 300 ft of any water source. 							
9. Division/Group Communication Summary							
Function	Frequency	System	Channel	Function	Frequency	System	Channel
Command		KING NIFC	12 or 14	Logistics		KING NIFC	
Tactical Div/Group		KING NIFC	2	Air to Ground		KING NIFC	8
Prepared by (Resource Unit Leader) Lisa Hartrick		Approved by (Planning Section Chief) Laura Prevatte			Date 05/16/2011		Time 2130 hrs

DIVISION ASSIGNMENT LIST		1. Ops Chief Shane Hardee (T) Planning OPS- Jeff Burns		2. Division/Group Division Structure Protection			
3. Incident Name PAINS BAY FIRE		4. Operational Period Date: 5/17/2011 Time: 0730-1930hrs					
5. Operations Personnel							
Division/Group Supervisor		Rickie Darden		Safety Mike Kretzschmar, Tom White			
6. Resources Assigned this Period							
Strike Team/Task Force/ Resource Designator	Leader	Number Persons	Trans. Needed	Drop Off PT./Time	Pick Up PT./Time		
LIASON	C. Price	1	NO	07300hrs	1930hrs		
ENG; Stumpy VFD	on station	4	NO	07300hrs	1930hrs		
ENG; Manns Harbor VFD*	on station	5	NO	07300hrs	1930hrs		
ENG; Roanoke Island VFD*	on station	4	NO	07300hrs	1930hrs		
Marsh Master; ALR1	J. Powers/ J. Cardwell	2	NO	07300hrs	1930hrs		
7. Control Operations							
8. Special Instructions <ul style="list-style-type: none"> Mann's Harbor and Roanoke Island VFDs are call-when-needed. 							
9. Division/Group Communication Summary							
Function	Frequency	System	Channel	Function	Frequency	System	Channel
Command		KING NIFC	12 or 14	Logistics		KING NIFC	
Tactical Div/Group		KING NIFC	3	Air to Ground		KING NIFC	8
Prepared by (Resource Unit Leader) Lisa Hartrick		Approved by (Planning Section Chief) Laura Prevatte		Date 05/16/2011		Time 2130hrs	

DIVISION ASSIGNMENT LIST		1. Ops Chief Shane Hardee (T) Planning OPS- Jeff Burns		2. Division/Group Division Initial Attack			
3. Incident Name PAINS BAY FIRE		4. Operational Period Date: 5/17/2011 Time: 0730-1930hrs					
5. Operations Personnel							
Division/Group Supervisor		Derrick Moore		Safety Mike Kretzschmar, Tom White			
6. Resources Assigned this Period							
Strike Team/Task Force/ Resource Designator	Leader	Number Persons	Trans. Needed	Drop Off PT./Time	Pick Up PT./Time		
T2DOZ; PLE3; NC-PLR	M. Walston	1	NO	0730hrs	1930hrs		
T2DOZ; ALX1; NC-ALR;	B. Govan	1	NO	0730hrs	1930hrs		
T6 ENG; E201; Mackay 8	J. Black/ M. Thompson	2	NO	0730hrs	1930hrs		
T6 ENG; E200; PLE2	A. Davis/ M. Howle	2	NO	0730hrs	1930hrs		
Flex Trac; E 247; AX2FT	B. Govan/R. Nordsven	2	NO	0730hrs	1930hrs		
7. Control Operations <ul style="list-style-type: none"> • Dozers and Type 6 Engines prepared for IA with ICT3-IA Derrick Moore. If IA occurs, IA resources will meet at DP1. • Dozers and Type 6 Engines are available to assist Divisions, fire weather permitting. • Limit use of foam within 300 ft of any water source. 							
8. Special Instructions <ul style="list-style-type: none"> • Mann's Harbor and Roanoke Island VFDs are call-when-needed. 							
9. Division/Group Communication Summary							
Function	Frequency	System	Channel	Function	Frequency	System	Channel
Command		KING NIFC	12 or 14	Logistics		KING NIFC	
Tactical Div/Group		KING NIFC	3	Air to Ground		KING NIFC	8
Prepared by (Resource Unit Leader) Lisa Hartrick		Approved by (Planning Section Chief) Laura Prevatte		Date 05/16/2011		Time 2130hrs	

DIVISION ASSIGNMENT LIST		1. Ops Chief Shane Hardee (T) Planning OPS – Jeff Burns		2. Division/Group Water Handling Group			
3. Incident Name PAINS BAY FIRE		4. Operational Period Date: 5/17/2011 Time: 0730-1930hrs					
5. Operations Personnel							
Division/Group Supervisor		Hagan Blake Aaron Gay (T)		Safety Mike Kretzshmar, Tom White			
6. Resources Assigned this Period							
Strike Team/Task Force/ Resource Designator	Leader	Number Persons	Trans. Needed	Drop Off PT./Time	Pick Up PT./Time		
Excavator; E204; NCFS	T. Harrell	1	NO	0730hrs	1930hrs		
Grader; E221; NCFS	A. Mann	1	NO	0730hrs	1930hrs		
HC21A; C1; PAS#1	J. Hecker	20	NO	0730hrs	1930hrs		
7. Control Operations							
<ul style="list-style-type: none"> Continue installation of 6" irrigation system and pump operations on Div D and C. 							
8. Special Instructions							
<ul style="list-style-type: none"> Limit use of foam within 300 ft of any water source. 							
9. Division/Group Communication Summary							
Function	Frequency	System	Channel	Function	Frequency	System	Channel
Command		KING NIFC	12 or 14	Logistics		KING NIFC	
Tactical Div/Group		KING NIFC	2	Air to Ground		KING NIFC	8
Prepared by (Resource Unit Leader) Lisa Hartrick		Approved by (Planning Section Chief) Laura Prevatte		Date 05/16/2011		Time 2130 hrs	

AIR OPERATIONS SUMMARY		PREPARED BY: Sherry Tomlinson		PREPARED DATE/TIME: 5/16/2011 1700									
1. INCIDENT NAME Pains Bay Fire		2. OPERATIONAL PERIOD DATE: 5/17//2011		START TIME: 0700 END TIME: 2000 SUNRISE: 556 AM SUNSET: 2001 PM									
3. REMARKS (Safety Notes, Hazards, Air Operations Special Equipment, etc.) -PILOTS-WATCH FOR BIRDS AND OTHER AIRCRAFT -BE ALERT FOR HIGH WINDS AND TURBULANCE -NOTE THAT SOME TOWERS ARE NOT MARKED ON SECTIONAL MAPS. TOWERS COULD BE UP TO 2500 FEET TALL -ALL FIREFIGHTING AIRCRAFT NEED TO SQUAWK 1255. FLY WITH LIGHTS ON. -HEADS UP WHEN PERFORMING WATER DROPS AROUND CREWS ON THE GROUND -MAINTAIN CLEAR COMMUNICATIONS -CREWS STAY AWAY FROM WATER DROPS INCLUDING APPROACH AND DEPARTURES -AIRCRAFT WILL BE ORDERED AND DISPATCHED UTILIZING LATITUDE AND LONGITUDE-DEGREES, MINUTES, SECONDS		4. MEDEVAC A/C:		5. TFR: FDC/2812,polygon/3'100' MSL									
6. PERSONNEL		7. FREQUENCIES		8. FIXED WING # Available/ Type/ Make-Model/FAA N# / Bases									
AODB: Sherry Tomlinson	Phone 253-293-3523	AIR/AIR PRIMARY	AM 123.125	FM	Airtankers								
ASGS: Scott Plue	208-661-6619	AIR/AIR SECONDARY NATIONAL FLIGHT FOLLOWING (NARROW BAND) ATGS/LEAD/ASM TRANSITION- HANDOFF	122.425		ALLIGATOR RIVER DISPATCH 252-473-1744 X 21 Ashley A/C & Personnel 828-257-2464								
ATGS: Brian Connolly	541-419-5109	AIR/AIR RW: SEE ABOVE											
ATGS (t) : Donnie Harris	252-475-8012												
ATGS: Josh Mathiesen	530-515-9272												
HLC0: NONE		AIR/GROUND: Primary		Rx 171.575 N									
		AIR/GROUND: Secondary		Tx 171.575 Tone 131.8 169.925									
		COMMAND: (Simplex)			Leadplanes								
HEB1: Tom Rawlings	406-261-1673	COMMAND RPT SEE ICS 205	Rx:										
		DECK FREQ:		168.6125	ATGS Aircraft Location: MQI								
		TOLC FREQ:			N11AR (Connolly)								
DARE BOMBING RANGE		FOR ENTERING DARE BOMBING RANGE	122.900		N135BA (Mathiesen)								
					Other: SEAT								
9. HELICOPTERS (Use Additional Sheets As Necessary)													
FAA N#	TY	MAKE/MODEL	BASE	AVAIL	START	REMARKS	FAA N#	TY	MAKE/MODEL	BASE	AVAIL	START	REMARKS
N905CH	1	SIKORSKY S-61-N	MQI	0900	0930	ALBERT NEWMAN 928-606-5101	N14HX	3	Bell 407	Pains H.B	0800	0900	Bob Madison 505-385-0401
N894HA	3	Bell 206	Pains H.B.	0800	0900	KYLE KRZYWICKI 757-617-4970							

Incident Radio Communications Plan		1. Incident Name: Pains Bay		2. Date/Time Prepared: 05/16/11 1430 hrs		3. Operational Period (Date/Time) 5/17/11		
4. Basic Radio Channel Utilization								
System/Cache	Channel	Function	Frequency/Tone	Assignment	Remarks			
NC Forest Service	CH 1	TAC 1	RX 151.400WIDE TX 151.400W Tone 136.5	Div C				
NC Forest Service	CH 2	TAC 2	RX 151.460W TX 151.460W Tone 136.5	Div D, E Water Handling Group				
NC Forest Service	CH 3	TAC 3	RX 151.310W TX 151.310W Tone 136.5	Structure Protection				
NIFC	CH 4	TAC 4	RX 168.050N TX 168.050 NARROW	DIVS A, B				
NIFC	CH 5	TAC 5	RX 168.200N TX 168.200N	Initial Attack	IA			
NIFC	CH 6	TAC 6	RX 168.600N TX 168.600N					
NIFC	CH 7	TAC 7	RX/TX 163.100N					
NIFC	CH 8	US FWS AIR TO GROUND	RX 171.575N TX 171.575 Tone 131.8	Fire Line				
TFS	CH 9	TAC 9	168.350N	FIRE LINE TAC				
NIFC	CH 10						Out of service	
US FWS	CH 11	COLUMBIA CMD REPEATER 11	RX 172.675 N TX 168.500 N Tone 118.8				North	
US FWS	CH 12	ENGLEHART CMD REPEATER 12	RX 164.625N TX 163.150 Tone 186.2				South	
US FWS	CH 13	TAC 13	TX/RX 162.2375N TONE 156.7					
NIFC	CH 14	CMD Repeater 14	RX 167.10-N TX 169.750N TONE 146.2				Located at Stumpy Point	
AIR TO GROUND	CH 15	AIR TO GROUND Secondary	RX/TX 169.925					
AIR GUARD	CH 16	Air Guard	RX/TX 168.625 TX Tone 110.9	Emergency contact with Aircraft				
Communications		Comm Unit	828-230-9008	Sam Bodenhamer				
ICS 205	5. Prepared By (Communications Unit Leader): Sam Bodenhamer							

MEDICAL PLAN	1. Incident Name	2. Date Prepared	3. Time Prepared	4. Operational Period						
	Pains Bay Fire	05/16/11	1530	05/17/11 0730-1930						
5. Incident Medical Aid Station										
Medical Aid Stations		Location			Paramedics					
					Yes		No			
Mann Harbor VFD Community Bldg (0900-2030hrs)		6677 Hwy 64 Business Mann Harbor					X			
Stumpy Point VFD (0730-0830hrs)		Stumpy Point					X			
Thomas Christian EMTP (0800 to 2000hrs)		Line EMT Staged at NCDFR Maintenance Bldg			X					
6. Transportation										
A. Ambulance Services										
Name		Address		Phone		Paramedics				
						Yes		No		
Dare County EMS Station #8		6677 Hwy 64 Business, Mann Harbor, NC		Dare Central (911)		X				
Dare County Med Flight		1078 Driftwood Dr., Manteo, NC		911		X				
B. Incident Ambulances										
Name		Location			Paramedics					
					Yes		No			
7. Hospitals										
Name	Address		Travel Time		Phone		Helipad		Burn Center	
			Air	Ground			Yes	No	Yes	No
Outer Banks Hospital	Mile Post 14, 4800 S. Croatan Hwy Nags Head, NC Latitude: N 35° 56' 20.33" Longitude: W 75° 45' 5.89"		15	30	(252) 449-4500		X			X
Sentara Lee Burn Center	Norfolk, VA		30	90	(757) 668-3117		X		X	
8. Medical Emergency Procedures										
<p>Report all injuries and illnesses to the closest DIVS. DIVS will notify the Line EMT and ICP Communications, and include the extent of the injury and transportation needed. A medical emergency should be declared over the radio immediately. All radio traffic will be kept to a minimum so emergency procedures can proceed uninhibited. ICP Communications will notify Dare Central Dispatch (911) and MEDL. Safety will be notified. Dare County EMS will respond and determine the appropriate treatment, transportation and facility needed. If ground transportation is determined, if possible, assign personnel to meet the ambulance at a location that is easily accessible to lead them to the site of the injured. If patient is transported to meet EMS personnel needs to remain with patient until EMS has arrived. EMT is staged at NCDFR Maintenance Building to respond to injuries and stabilize patient until EMS personnel arrives.</p> <p>For Non emergencies contact the Medical Unit Leader located at ICP. Transportation and treatment will be arranged by MEDL at ICP.</p>										
Prepared by (Medical Unit Leader)						10. Reviewed by (Safety Officer)				
Randy Kearney, MEDL(T) / John Weaver, MEDL						Mike Kretzschmar / Tom White				

PAINS BAY FIRE CONTACT LIST May 17, 2011

Name	Position	Phone	Name	Position	Phone
COMMAND			PLANS		
Smith, Robert	ICT2	252-813-3721	Prevatte, Laura	PSC2	910-470-7801
Miller, Roger	PIO2	828-499-1911	Pickens, Bill	PSC2	919-218-2802
Carlson, Chris	PIO2	919-632-0185	Hartrick, Lisa	RESL	
Huffman, Michael	LOFR	919-218-9060	Bledsoe, Gail	RESL	919-631-0762
Kretzschmar, Mike	SOF2	828-413-2588	Yeich, Brian	SCKN	910-309-8654
White, Tom	SOF2	910-334-0029	McKnight, Pat (Choo-Choo)	SCKN	570-862-6321
FWS			Hicks, Greg	SITL	919-545-4501
Byrant, Mike	Project Leader-NWRs		DeMay, Bill	FOBS	910-334-0032
		252-216-7505	Huffman, Adam	FOBS	910-309-8775
Lanier, Scott	Deputy Proj Leader- NWRs		Dunbar, Jamie	FOBS	252-542-0127
		252-216-7506	Hurdle, Teresa	FOBS	252-331-3152
Crews, Tom		252-475-4269	Pickens, Laura	GISS	252-475-0153
Alligator River NWR		252-473-1131	Powell, Walter	GISS	252-229-0810
Dare County Sheriff		252-473-3444	Ludlum, Scott	FBAN	252-903-8007
Czernik, Helen		252-475-8339	Merrell, Jim	IMET	240-205-9007
Carver, Vince		252-796-7518	Blackwood, Nancy	DOCL	336-239-4265
Strawser, Bonnie	PIO2	252-216-8667	Trickel, Rob	DMOB	919-604-5802
Stewart, Dennis	USFWS	252-473-1131x231	FINANCE		
COOPERATORS			Tripp, Teresa	FSC2	
Price, RD	Chief, Stumpy Pt Fire Dept		Hall, Renee	PROC	
		252-216-7146	Plummer, Mary	TIME	704-616-0747
Price, Curtis	Dpty Chief, Stumpy Pt FD		Faustini, Louise	COST	
	cell	252-216-7094	Baker, Susan	EQTR	252-796-7774
	home	252-475-1040	James, Tom	CTSP	919-218-9432
Sanderson, Sandy	Emergency Mgmt Coord		LOGISTICS		
		252-473-8326	Harris, Roger	LSC2	828-450-0013
Shackelford, Rob	NCFS	252-216-5271	Barrow, Neil	LSC2	252-560-6478
	home	252-216-8800	Raynor, Patrick	ORDM	336-239-2377
	office	252-473-2531	Fay, Susan	ORDM(t)	919-548-5837
Patterson, Karen	IBS NCFS	919-218-2586	Pittman, Kevin	SPUL	919-218-7732
Christopher, Ed	NCFS	252-542-0119	Arney, Derek	RCDM	828-413-2541
OPERATIONS			Bodenhamer, Sam	COML	828-230-9008
Hardee, Shane	OSC2(t)	910-770-1880	Taylor, Frank	COMT	823-337-7998
Burns, Jeff	OSC2	828-713-0201	Credle, Chuck	COMT	252-944-8464
Moore, Derrick	DIVS	252-717-8286	Welker, Eric	RADO	336-239-6834
Blake, Hagan T.	DIVS	910-641-1441	Perry, Alton	FACL	919-218-5511
Darden, Ricky	DIVS	910-289-8819	Hunter, Les	FDUL	919-218-3349
Collett, Jay	DIVS	540-292-1038	McPherson, Jeff	GSUL	252-312-4379
Wood, Rob	DIVS(t)	912-346-0978	Bell, Gavin	EQPM	704-813-9127
Gibbs, Marshall	DIVS(t)	252-542-9658	Evans, Martin	EQPM	252-945-0607
Schow, Chris	DIVS	802-353-7521	DeWeese, Ralph	EQPM	662-633-0607
AIR OPERATIONS			Weaver, John	MEDL	720-771-6047
Tomlinson, Sherry	AOBD	253-293-3523	Kearney, Randy	MEDL(t)	919-727-0954
Plue, Marshall	ASGS	208-661-6619	Jenkins, Richard	SECM	270-703-0135

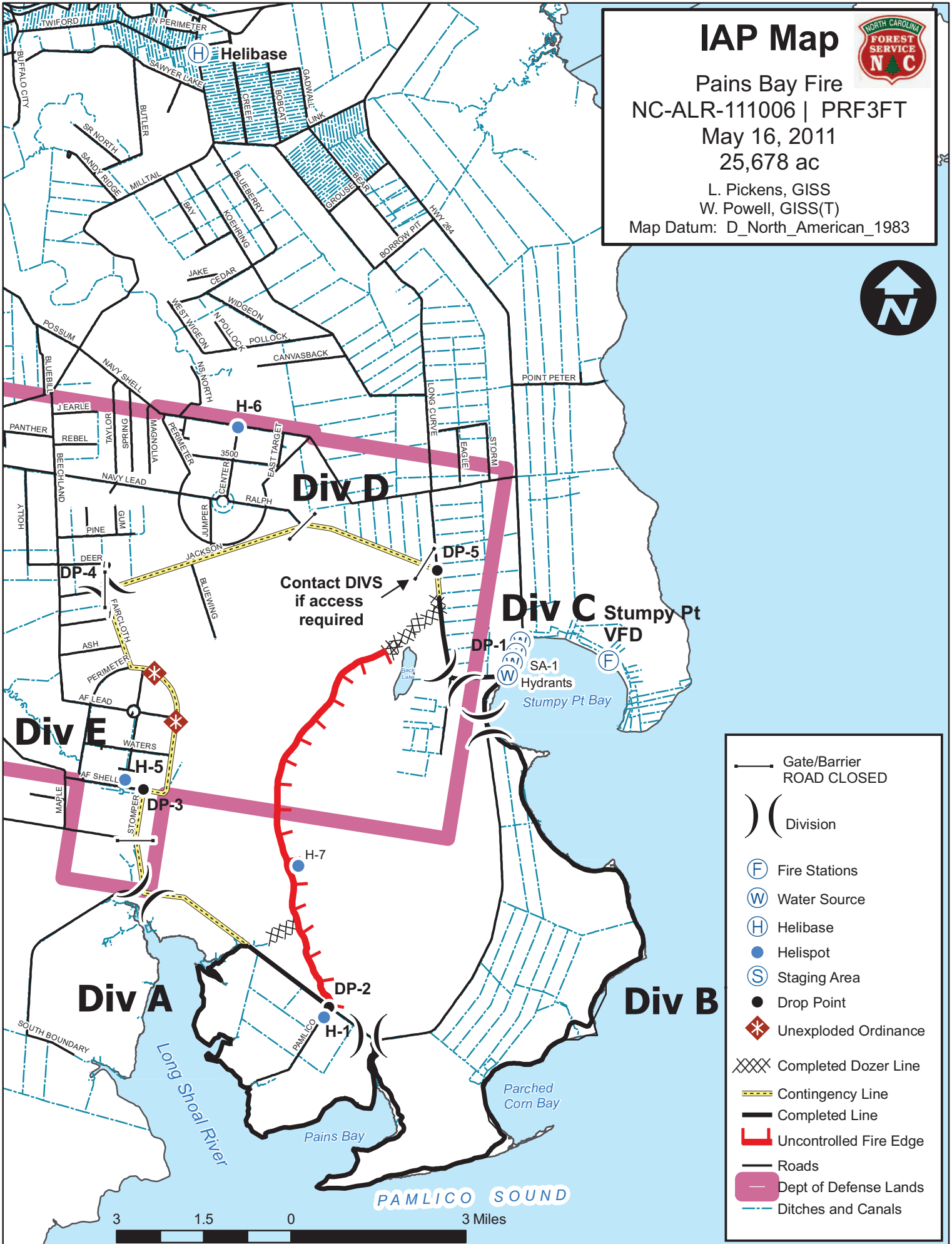
ICP Fax	252-473-9408
ICP- SCKN/DMOB	252-473-9347
NWR Dispatch	252-473-1744 x 21

IAP Map



Pains Bay Fire
 NC-ALR-111006 | PRF3FT
 May 16, 2011
 25,678 ac

L. Pickens, GISS
 W. Powell, GISS(T)
 Map Datum: D_North_American_1983



	Gate/Barrier
	ROAD CLOSED
	Division
	Fire Stations
	Water Source
	Helibase
	Helispot
	Staging Area
	Drop Point
	Unexploded Ordnance
	Completed Dozer Line
	Contingency Line
	Completed Line
	Uncontrolled Fire Edge
	Roads
	Dept of Defense Lands
	Ditches and Canals

3 1.5 0 3 Miles

WEATHER FORECAST - Tuesday day shift 5/17/11 Prepared 1900E 5/16/11 Jim Merrell – IMET

WEATHER DISCUSSION

A weak frontal boundary will be stalled over the area today, then move off the coast late tonight. Low pressure inland over central North Carolina will drift slowly north today, then northwest into western Virginia tonight and Wednesday. A weak trough of low pressure will linger over the area Thursday and Friday, then high pressure will extend over the area from the southeast Saturday through Monday.

WEATHER FORECAST – Tuesday

Weather: Mostly cloudy. A 50 percent chance of afternoon showers and thunderstorms. Rainfall amounts up to a quarter of an inch possible. Slight chance of severe thunderstorms with hail and gusty winds.

LAL: 4

Temperatures: Maximum near 77 around 1300.

Humidity: Minimum 55 percent around 1300.

20 FT winds: South-southeast 8 to 13 mph gusting to 20 mph.

Haines Index: 4.

Stability/Inversion: Inversion burning off by 0900. Mixing height 6000 ft agl. Transport wind south-southeast 15 mph.

Aviation operations: VFR prevailing with local IFR ceilings and visibilities in heavier showers and thunderstorms. Smoke may impact visibility at Edenton 0600-1000.

Forecast for Tuesday night

Partly cloudy. 40 percent chance of showers and thunderstorms, mainly during the evening. Rainfall amounts around a tenth of an inch possible. Minimum temperature around 57. Maximum RH 90-100 percent. Winds south around 5 to 10 mph.

OUTLOOK FOR Wednesday

Partly cloudy. 20 percent chance of afternoon showers and thunderstorms. Rainfall amounts up to one tenth of an inch possible. Maximum temperature around 78. Minimum RH around 50 percent. Winds south to southeast 5 to 10 mph gusting to 15 mph. LAL: 3

EXTENDED FORECAST:

Wednesday night...Partly cloudy with a 20 percent chance of evening showers and thunderstorms. Low near 60. Rainfall amounts up to one quarter inch possible.

Thursday...Mostly sunny. High in the lower 80s. Minimum RH around 40 percent. South to southwest winds 5 to 10 mph gusting to 15 mph.

Friday – Saturday...Partly cloudy. Slight chance afternoon and evening showers and thunderstorms. Highs 75 to 80. Lows around 60. Minimum RH 45-55 percent. Winds south to southwest 5-15 mph during period except west Friday night and Saturday.

Sunday – Monday...Mostly Sunny. Highs in the low to mid 80s. Lows in the low to mid 60s. Minimum RH 45 to 55 percent. Winds south to southwest 5 to 15 mph.

FIRE BEHAVIOR- Tuesday 5/17/11

Scott Ludlum – FBAN 252-903-8007

Previous Fire Behavior- No initial attack fires reported yesterday. Small pockets of torching and reburning observed within the interior of the fire. **Ground fire continues to spread as the current drying trend continues.**

Predicted Fire Behavior- If fire escapes control lines you can expect torching and moderate rates of spread. During peak wind gust expect crowning and rapid rates of spread, especially if the fire grows much larger than an acre. Be aware of the local sea breeze influence, this will increase rates of spread and change fire direction very suddenly.

Fuels/Fuel Model- Pocosin (Tall Brush) - FM 4

Rates of Spread-	Flame Lengths-	Probability of Ignition-	Spotting-
36-82 ch/hr <i>2 ch. lower (24 hr trend)</i>	15-23 ft. <i>1 ft. lower (24 hr trend)</i>	30% <i>25% lower (24 hr trend)</i>	0.2-0.3 Miles <i>0.1 mi. lower (24 hr trend)</i>

Controllability- Indirect attack should be used if fires become established. Use of aircraft should always be utilized. Safety of firefighters is of critical concern.

Organic Soil-Pungo Muck

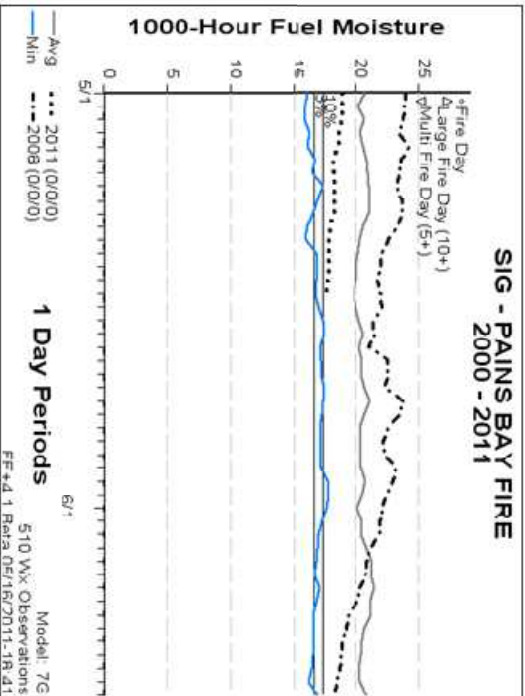
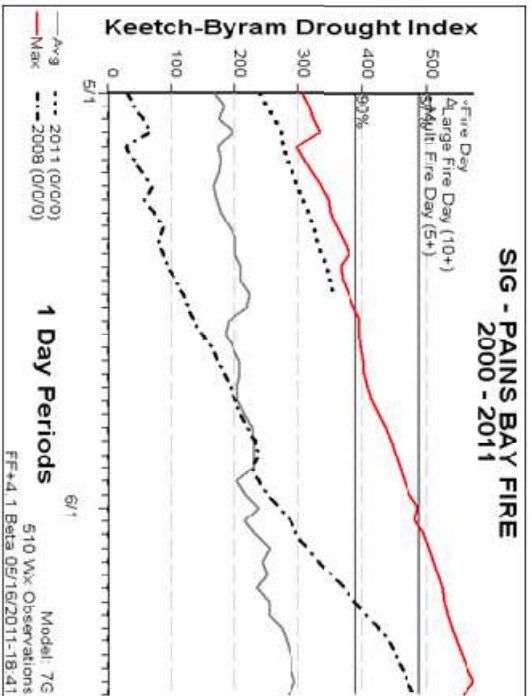
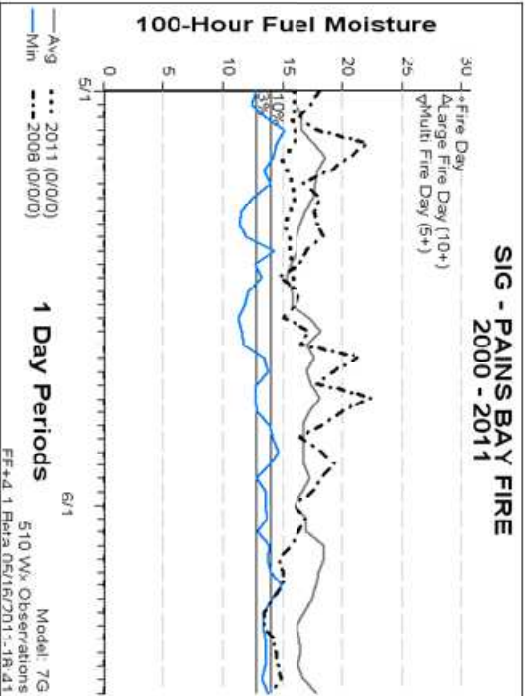
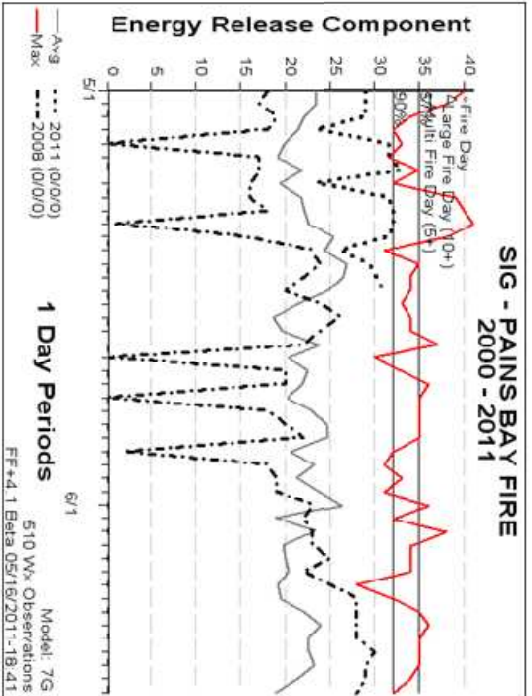
Depth of Peat Soils	Depth to Water table (May)	Depth Burned	Ground Fire Burn Rate
12-96" (1-8')	18"-20" (1.5')	Avg. 8-14"	Previous 7 Days 1.0-1.25"/day

Fuel Moisture- (* indicates new maximum indices may be set for this day)

1 HR (1/4" or less)	10 HR (1/4"-1")	100 HR (1-3")	1000 HR (3-8")	Live Woody
10% <i>2% higher (24 hr trend)</i>	13% <i>3% higher (24 hr trend)</i>	16% <i>No Change (24 hr trend)</i>	19% <i>1% higher (24 hr trend)</i>	70% <i>No Change (24 hr trend)</i>

Predicted Fire Danger Readings- Dare Bomb Range (* indicates new maximum indices may be set for this day)

Ignition Component	Spread Component	Energy Release Component	Burning Index	KBDI
13 <i>7 lower (24 hr trend)</i>	12 <i>No Change (24 hr trend)</i>	26 <i>3 lower (24 hr trend)</i>	42 <i>2 lower (24 hr trend)</i>	400 <i>7 higher (24 hr trend)</i>



☐ **SAFETY MESSAGE: Mike Kretzschmar SOF2/ Tom White SOF2**

WARNING SIGNS OF ASH PITS

- Areas of white ash with little or no smoke.
- Swarms of gnats hovering over an area.
- Areas of sunken ground or change in elevation over an area.
- After a rain the ground will appear to have a crust (orange tint) due to heating and drying of the surface.
- Extensive lateral tree roots exposed.
- No smoke and the smell of organic material burning.
- Burned out stump holes.

REASONS WHY PEOPLE CHOOSE NOT TO WEAR PERSONAL PROTECTIVE EQUIPMENT

1. This won't take long to do
2. It is going to take longer to put on the PPE than to do the task/job.
3. Too hot to wear PPE.
4. I won't get hurt.
5. I don't have the correct PPE.
6. PPE is not available.
7. Do not think about using PPE.
8. Is not aware PPE is required.
9. Is supervisor around? No. Good, I am going to do it my way. (ATTITUDE)
10. I saw the supervisor do this without using PPE so I can.
11. I've done this task/job numerous times without using PPE and not gotten hurt.
12. Who really cares if I use PPE or not.

THUNDERSTORM SAFETY- Observe the 30/30 rule: If you see lightning and hear thunderclaps follow in less than 30 seconds, take the storm precautions as described on page 19 of the IRPG. Monitor radio weather updates and DIVS acknowledge broadcast.

SAFETY IS EVERYONES RESPONSIBILITY! KEEP UP THE GREAT WORK!



