

PAINS BAY FIRE

NC-ALR-111006
PRF3FT (1502)



Incident Action Plan ***WEDNESDAY***



May 25, 2011
0730-1930 hrs



INCIDENT OBJECTIVES	1. Incident Name PAINS BAY FIRE	2. Date Prepared 5/24/2011	3. Time Prepared 2304 hrs
4. Operational Period Wednesday, May 25, 2011 0730 to 1930 hrs			
5. Incident Objectives Control Objectives <ol style="list-style-type: none"> 1. Provide for the safety of firefighters and general public by adherence to the 10 standard fire orders, 18 watch-out situations, in addition to maintaining direct and clear communications with all incident personnel and the general public. 2. Keep fire contained within the newly established boundaries for indirect attack suppression strategy. This will be west of US Highway 264, south of US Highway 64 and east of Milltail Creek 3. Conduct triage and prepare structures on the North side of Bayview Rd in the village of Stumpy Point. Coordinate with Dare Emergency Mangement Coordinator to initiate evacuation if fire threatens the village of Stumpy Point. 4. Expedite the safe opening of US Hwy 264 as soon as operational objectives are met to minimize threat to Stumpy Point community. 5. Continue soil saturation to extinguish ground fire by maintaining water in plugged canals. 6. Mop-up a minimum of 500 feet into the fire perimeter 7. Ensure that suppression & containment strategies on FWS property follow minimum impact suppression tactics. Escalation of tactics should consider amount of progress being made with current tactics, and the likelihood of those tactics being successful. Management Objectives <ol style="list-style-type: none"> 1. Keep general public & local officals in affected counties, as well as incident stake holders informed of fire status through situation updates and personal contacts at least every other day. 2. Provide for accurate cost tracking and documentation of incident in accordance with IBH (Incident Business Handbook) procedures. 3. Emphasize cost containment through continual assessment of personnel and resource needs to provide (right-sizing) of incident. 4. Develop a concise transition document in preparation for a transfer of command to the incoming Incident Mangement Team. 			
6. Weather Forecast For Period			
See Attached Tailgate Safety Briefing Sheet.			
7. General Safety Message			
See Attached Tailgate Safety Briefing Sheet.			
8. Attachments (mark if attached)			
<ul style="list-style-type: none"> ✓ Organizational List – ICS 203 ✓ Div. Assignment Lists - ICS 204 ✓ Air Operations Summary- ICS 220 ✓ Communications Plan - ICS 205 ✓ Medical Plan - ICS 206 		<ul style="list-style-type: none"> ✓ Contact List ✓ Incident Map ✓ Tailgate Safety Briefing Sheet ✓ Unit Log - ICS 214 	
9. Prepared by (Planning Section Chief)		10. Approved by (Incident Commander)	

ORGANIZATION ASSIGNMENT LIST		9.	Operations Section	
1. Incident Name		Chief	Ned Brickhouse 6/3 Jeff Burns 5/25 Derrick Moore(T) 5/25	
Pains Bay Fire NC-ALR-111006				
Divisions/Groups				
2. Date 5/24/2011	3. Time 1800 hrs	Division/Group	A, B	Mike Hinson
		Division/Group	D, C, F	Rickie Darden 5/25
4. Operational Period 5/25/2011 0730-1930hrs		Division/Group	M	Hagan Blake 5/25
5. Incident Commander and Staff		Division/Group	N	Aaron Gay 5/27
Incident Commander	Robert Smith			
Safety Officer	Mike Kretzschmar Tom White	Division/Group	O	W. Jeff Koenig
Information Officer	Roger Miller Chris Carlson	Division/Group	IA	Eric Meekins 5/30
Liason Officer	Keith Suttles	Division/Group	Structure Protection	Greg Riggs 6/3
6 a. Agency Administrators		Division/Group	Staging Area	
FWS	Mike Byrant	Division/Group	Night Shift	Jonathan Ambrose 5/28
FWS	Scott Lanier	Division/Group	E, G,H,I,J,K, L	Unstaffed
b. Agency Representatives		Division/Group		
NCFS	Ed Christopher			
FWS	Bonnie Strawser	Water Handling		Miller Caison 6/3
FWS	Tom Crews	Deputy		
Emer. Mgmt. Coord	Sandy Sanderson			
Stumpy Pt.Fire Dept	Curtis Price			
US Navy	Lt. Cmdr. Marty Hill			
US Airforce	Joe Lafferty			
		d. Air Operations Branch		
7. Planning Section		Air Ops Branch Director	Sherry Tomlinson 5/29	
Chief	Laura Prevatte/ Bill Pickens	Air Support Group Sup	Scott Plue 5/29	
Resources Unit	Lisa Hartrick, Brian Yeich (T)			
Status Check-in		10. Finance Section		
Situation Unit	Greg Hicks, Gail Bledsoe (T)	Chief	Teresa Tripp / Don Roach	
FOBS	Bill DeMay, Adam Huffman	Equipment	Susan Baker	
Fire Behavior Analyst	Scott Ludlum	Cost	Louise Faustini	
Demobilization	Rob Trickel	Time	Mary Plummer	
		PROC	Renee Hall	
GIS	Walter Powell, Jason Moan	CTSP	Tom James	
8. Logistics Section		IBA	Dana Reid 6/2 Helen Czernik (T) 6/5	
Chief	Roger Harris, Neil Barrow			
Receiving Manager	Derek Arney			
Supply Unit	Kevin Pittman			
Ground Support Unit	Jeff McPherson			
Security Manager	Jimmy Riner			
Communications Unit	Sam Bodenhamer			
Communications Tech	Chuck Credle			
RADO	Jerry Perry/ Scotty Comer			
Medical Unit	John Weaver, Randy Kearney(T)			
EMT	T. Christian			
Ordering Manager	Patrick Raynor,Susan Fay(T)			
Equipment	Gavin Bell / Martin Evans 6/7 Derek Risen	Prepared by: Lisa Hartrick, RESL		
Facilities/Food Unit	Alton Perry/Les Hunter			

DIVISION ASSIGNMENT LIST	1. Ops Chief Ned Brickhouse Derrick Moore (T) Planning OPS – Jeff Burns		2. Division/Group Division A, B				
3. Incident Name PAINS BAY FIRE		4. Operational Period Date: 5/25/2011 Time: 0730-1930hrs					
5. Operations Personnel							
Division/Group Supervisor	Mike Hinson	O- 194	Safety	Mike Kretzschmar, Tom White			
6. Resources Assigned this Period							
Strike Team/Task Force/ Resource Designator	Leader	Number Persons	Last Work Day	Drop Off PT./Time	Pick Up PT./Time		
E-377 Pump operators	J. Chandler / Carter	2	6/2	0730hrs	1930hrs		
E-378 Pump operators	A. Goins / Bryan	2	6/2	0730hrs	1930hrs		
7. Control Operations							
<ul style="list-style-type: none"> Patrol and mop up Run irrigation operations 							
8. Special Instructions							
<ul style="list-style-type: none"> Limit use of foam within 300 ft of any water source. 							
9. Division/Group Communication Summary							
Function	Frequency	System	Channel	Function	Frequency	System	Channel
Command south		KING NIFC	North 11 South 12	Initial Attack		KING NIFC	5
Tactical Div/Group		KING NIFC	4	Air to Ground		KING NIFC	8
Prepared by (Resource Unit Leader) Lisa Hartrick	Approved by (Planning Section Chief) Laura Prevatte			Date 05/24/2011	Time 2130 hrs		

DIVISION ASSIGNMENT LIST			1. Ops Chief Ned Brickhouse Derrick Moore (T) Planning OPS – Jeff Burns		2. Division/Group Division D, C, F		
3. Incident Name PAINS BAY FIRE			4. Operational Period Date: 5/25/2011 Time: 0730-1930hrs				
5. Operations Personnel							
Division/Group Supervisor		Rickie Darden O-150.36 LWD 5/25		Safety		Mike Kretzshmar, Tom White	
6. Resources Assigned this Period							
Strike Team/Task Force/ Resource Designator		Leader		Number Persons	Last Work Day	Drop Off PT./Time	Pick Up PT./Time
E-306 Pump operators		M. Bishop / Bell		2	5/26	0730hrs	1930hrs
E-307 Pump operators		D. McCoy / Hendrick		2	5/26	0730hrs	1930hrs
THSP		M. Gibbs O-41		1	6/3	0730hrs	1930hrs
ES6; E-388; NCS#4 STEN		J. Marlowe		11	6/3	0730hrs	1930hrs
ENG6				0			
ENG6				0			
ENG6				0			
ENG6				0			
ENG6				0			
ST DZ		A. Hux O-39		1	5/31	0730hrs	1930hrs
T2DOZ; E-226; 13X41; NCFS		P. Meekins		2		0730hrs	1930hrs
T2DOZ; E-227; 13X32; NCFS				2		0730hrs	1930hrs
7. Control Operations							
<ul style="list-style-type: none"> Blade line and install irrigation around spots on Long Curve Road Continue to hold spot fire east of Long Curve Road Identify critical areas and special needs for contingency burnout operations on Foxtrot. Patrol Lake Worth Road. Secure DBR shop and 2 structures west of Hwy 264, if fire establishes itself east of Long Curve Road 							
8. Special Instructions							
<ul style="list-style-type: none"> Limit use of foam within 300 ft of any water source. 							
9. Division/Group Communication Summary							
Function	Frequency	System	Channel	Function	Frequency	System	Channel
Command south		KING NIFC	North 11 South 12	Initial Attack		KING NIFC	5
Tactical Div/Group		KING NIFC	2	Air to Ground		KING NIFC	8
Prepared by (Resource Unit Leader) Lisa Hartrick		Approved by (Planning Section Chief) Laura Prevatte			Date 05/24/2011		Time 2130 hrs

DIVISION ASSIGNMENT LIST		1. Ops Chief Ned Brickhouse Derrick Moore (T) Planning OPS – Jeff Burns		2. Division/Group M			
3. Incident Name PAINS BAY FIRE		4. Operational Period Date: 5/25/2011 Time: 0730-1930hrs					
5. Operations Personnel							
Division/Group Supervisor		Thomas “Hagan” Blake O-150.38 LWD 05/26		Safety Mike Kretzshmar, Tom White			
6. Resources Assigned this Period							
Strike Team/Task Force/ Resource Designator	Leader	Number Persons	Last Work Day	Drop Off PT./Time	Pick Up PT./Time		
T6 ENG; E-9; VA-SHP	J. Jarrells / D. Good / A. Williams	3	6/5	0730hrs	1930hrs		
E-308 Pump operators	C. Speary, Scott	2	5/26	0730hrs	1930hrs		
WAT3; E-309; 7E1 NCFS	R. Fleming	1	5/26	0730hrs	1930hrs		
ES6 ; NCS#5 ; E-389 STEN	J. Tate	11	6/3	0730hrs	1930hrs		
ENG6		0		0730hrs	1930hrs		
ENG6		0		0730hrs	1930hrs		
ENG6		0		0730hrs	1930hrs		
ENG 6		0		0730hrs	1930hrs		
ENG6		0		0730hrs	1930hrs		
STDZ	S. Sheets O-189	1	5/31	0730hrs	1930hrs		
Flex Trac; E-329; AX6 FWS	J. Powers O-34 / E. Spruill O-88	2	5/25 & 6/4	0730hrs	1930hrs		
Flex Trac;E-33; 13x2	C. Gibbs O-102 / A. Harris O-100	2	6/4 & 6/5	0730hrs	1930hrs		
SOF2	D. Brassard O-79	1	5/25	0730hrs	1930hrs		
7. Control Operations							
<ul style="list-style-type: none"> • Prep for burn out and hold Long Curve Road. • Identify critical areas and special needs 							
8. Special Instructions							
<ul style="list-style-type: none"> • Identify escape routes if Long Curve Road is compromised. • Limit use of foam within 300 ft of any water source. 							
9. Division/Group Communication Summary							
Function	Frequency	System	Channel	Function	Frequency	System	Channel
Command		KING NIFC	North 11 South 12	Initial Attack		KING NIFC	5
Tactical Div/Group		KING NIFC	3	Air to Ground		KING NIFC	8
Prepared by (Resource Unit Leader) Lisa Hartrick		Approved by (Planning Section Chief) Laura Prevatte		Date 05/24/2011		Time 2130 hrs	

DIVISION ASSIGNMENT LIST		1. Ops Chief Ned Brickhouse Derrick Moore (T) Planning OPS – Jeff Burns		2. Division/Group N			
3. Incident Name PAINS BAY FIRE		4. Operational Period Date: 5/25/2011 Time: 0730-1930hrs					
5. Operations Personnel							
Division/Group Supervisor		Aaron Gay 5/27		Safety			
				Mike Kretzshmar, Tom White			
6. Resources Assigned this Period							
Strike Team/Task Force/ Resource Designator	Leader	Number Persons	Last Work Day	Drop Off PT./Time	Pick Up PT./Time		
TFLD	Jon Albertson O-193	1	6/2	0730 hrs	1930 hrs		
T6 ENG; E-6; VA-VAF	L. Shaw / Fultz / Blevins	3	5/24	0730 hrs	1930 hrs		
T6 ENG; E-8; VA-VAF	T. Caudill / Tanquay / Wolfe	3	5/24	0730hrs	1930hrs		
WAT3; E-385; 13E1	D. McEntire O-160	1	5/26	0730hrs	1930hrs		
TFLD	B. Miller E-9.4 / J. Weaver (T) O-150.42	2	5/25 & 5/28	0730hrs	1930hrs		
Flex Trac; E-313; DX7	L. "Mel" Guthrie O-167	1	5/27	0730hrs	1930hrs		
Flex Trac; _____; PX5	W. Lowe O-195	1	6/5	0730hrs	1930hrs		
Flex Trac; E-228; 13X62				0730hrs	1930hrs		
Flex Trac; E-35; 13X67				0730hrs	1930hrs		
Marsh Master; E-222; DBR	unstaffed	0					
ES6; E-390; NCS#6 STEN	F. Harris	9	6/3	0730hrs	1930hrs		
ENG6		0		0730hrs	1930hrs		
ENG6		0		0730hrs	1930hrs		
ENG6		0		0730hrs	1930hrs		
ENG6		0		0730hrs	1930hrs		
ENG6		0		0730hrs	1930hrs		
SOF2	Keith Jenkins O-186	1	6/4	0730hrs	1930hrs		
7. Control Operations							
<ul style="list-style-type: none"> • Prep area for burn out from DIV N/M break west along fuel break to Navy Shell Rd. • Identify critical areas and special needs. • Launch Bridge as needed 							
8. Special Instructions							
<ul style="list-style-type: none"> • Limit use of foam within 300 ft of any water source. • Identify escape routes and safety zones. • 							
9. Division/Group Communication Summary							
Function	Frequency	System	Channel	Function	Frequency	System	Channel
Command		KING NIFC	North 11 South 12	Initial Attack		KING NIFC	5
Tactical Div/Group		KING NIFC	5	Air to Ground		KING NIFC	8
Prepared by (Resource Unit Leader) Lisa Hartrick		Approved by (Planning Section Chief) Laura Prevatte		Date 05/24/2011		Time 2230 hrs	

DIVISION ASSIGNMENT LIST		1. Ops Chief Ned Brickhouse Derrick Moore (T) Planning OPS – Jeff Burns		2. Division/Group O			
3. Incident Name PAINS BAY FIRE		4. Operational Period Date: 5/25/2011 Time: 0730-1930hrs					
5. Operations Personnel							
Division/Group Supervisor		W. Jeff Koenig O-191		Safety			
				Mike Kretzshmar, Tom White			
6. Resources Assigned this Period							
Strike Team/Task Force/ Resource Designator	Leader	Number Persons	Last Work Day	Drop Off PT./Time	Pick Up PT./Time		
STEN	D. Poole O-192	1	6/2	0730hrs	1930hrs		
ENG6; E-13; SC-FMF	Ray / Wyman / Rister	3	6/2	0730 hrs	1930 hrs		
ENG6; E-14; IL-SHF	Paukert / Hancock / Walker	3	6/2	0730hrs	1930hrs		
WAT3; E-310; 4E1	J. Drake	1	5/26	0730hrs	1930hrs		
7. Control Operations							
<ul style="list-style-type: none"> Establish perimeter line from Borrow Pit Road to Mill Tail Road. Prep area south of agricultural fields of curing wheat. Identify critical areas and special needs. 							
8. Special Instructions							
<ul style="list-style-type: none"> Limit use of foam within 300 ft of any water source. Establish contact with Liaison for Navy Range see Keith Suttles. 							
9. Division/Group Communication Summary							
Function	Frequency	System	Channel	Function	Frequency	System	Channel
Command		KING NIFC	North 11 South 12	Initial Attack		KING NIFC	5
Tactical Div/Group		KING NIFC	6	Air to Ground		KING NIFC	8
Prepared by (Resource Unit Leader) Lisa Hartrick		Approved by (Planning Section Chief) Laura Prevatte		Date 05/24/2011		Time 2130 hrs	

DIVISION ASSIGNMENT LIST		1. Ops Chief Ned Brickhouse Derrick Moore (T) Planning OPS – Jeff Burns		2. Division/Group WATER HANDLING			
3. Incident Name PAINS BAY FIRE		4. Operational Period Date: 5/25/2011 Time: 0730-1930hrs					
5. Operations Personnel							
Branch Director		F. Miller Caison O- 205 LDW 6/3		Safety		Mike Kretzshmar, Tom White	
6. Resources Assigned this Period							
Strike Team/Task Force/ Resource Designator		Leader		Number Persons	Last Work Day	Drop Off PT./Time	Pick Up PT./Time
WHSP		W. Payne O-164		2	5/27& 5/31	0730hrs	1930hrs
4 - Tractors with 16" Lift Pumps; NC-DFR		E-314, E-315, E-360, E-361 E-255, E-256, S-13, S-14		0			
2 – 18" Volume Lift Pumps		E-354, S-5150		0			
6 – 6" Water Pumps 3 – 2.5 " Pumps		E-338, E-339, E-5191, E-5192, S5151, S-5352		0			
Mop-up Truck; E-359 NCFS				0			
2 – Mop-up trailers NCFS		E-239, E-240		0			
7. Control Operations							
8. Special Instructions							
9. Division/Group Communication Summary							
Function	Frequency	System	Channel	Function	Frequency	System	Channel
Command		KING NIFC	North 11 South 12	Initial Attack		KING NIFC	5
Tactical Div/Group		KING NIFC	1	Air to Ground		KING NIFC	8
Prepared by (Resource Unit Leader) Lisa Hartrick		Approved by (Planning Section Chief) Laura Prevatte			Date 05/24/2011		Time 2130 hrs

DIVISION ASSIGNMENT LIST			1. Ops Chief Ned Brickhouse Derrick Moore (T) Planning OPS – Jeff Burns		2. Division/Group Staging Area (Stumpy Point Ferry Dock)		
3. Incident Name PAINS BAY FIRE			4. Operational Period Date: 5/25/2011 Time: 0730-1930hrs				
5. Operations Personnel							
Staging Manager				Safety		Mike Kretzshmar, Tom White	
6. Resources Assigned this Period							
Strike Team/Task Force/ Resource Designator	Leader		Number Persons	Last Work Day	Drop Off PT./Time	Pick Up PT./Time	
Grader; E-221	Mann		1	6/6	0730hrs	1930hrs	
DIVS	Mike Winslow O- 206		1	6/3	0730hrs	1930hrs	
DIVS	Don Little O- 207		1	6/3	0730hrs	1930hrs	
7. Control Operations <ul style="list-style-type: none"> Report to Stumpy Point Bay Ferry Dock and Monitor Command channels. 							
8. Special Instructions							
9. Division/Group Communication Summary							
Function	Frequency	System	Channel	Function	Frequency	System	Channel
Command		KING NIFC	North 11 South 12	Initial Attack		KING NIFC	5
Tactical Div/Group		KING NIFC		Air to Ground		KING NIFC	8
Prepared by (Resource Unit Leader) Lisa Hartrick		Approved by (Planning Section Chief) Laura Prevatte			Date 05/24/2011		Time 2130 hrs

DIVISION ASSIGNMENT LIST		1. Ops Chief Ned Brickhouse Derrick Moore (T) Planning OPS- Jeff Burns		2. Division/Group Initial Attack Group			
3. Incident Name PAINS BAY FIRE		4. Operational Period Date: 5/25/2011 Time: 0730-1930hrs					
5. <i>Operations Personnel</i>							
Division/Group Supervisor		E. Meekins O-166 LWD 5/30		Safety Mike Kretzschmar, Tom White			
6. <i>Resources Assigned this Period</i>							
Strike Team/Task Force/ Resource Designator	Leader	Number Persons	Last Work Day	Drop Off PT./Time	Pick Up PT./Time		
ICT4	R. Shackelford O-38	1	5/28	0730hrs	1930hrs		
T6 ENG; E200; PLE2	A. Davis O-144 M. Howle O-35	2	6/3	0730hrs	1930hrs		
WAT3; E-379	B. Govan O-81	1	6/4	0730hrs	1930hrs		
TPL2; AX1; D6K E-328 NCALR	unstaffed	0		0730hrs	1930hrs		
Flex Trac; AX2; E-380 NCALR	unstaffed	0		0730hrs	1930hrs		
7. Control Operations							
<ul style="list-style-type: none"> Resources will provide initial attack for new fire starts on FWS District 1 (Alligator River, Pocosin Lakes, Pungo, Pea Island, Swan Quarter, Mattamuskeet NWR. Resources will be dispatched by FWS through DIVS E. Meekins. 							
8. Special Instructions							
<ul style="list-style-type: none"> Limit use of foam within 100' of any water surface. 							
9. <i>Division/Group Communication Summary</i>							
Function	Frequency	System	Channel	Function	Frequency	System	Channel
Command		KING NIFC	North 11 South 12	Logistics		KING NIFC	
Tactical Div/Group		KING NIFC	5	Air to Ground		KING NIFC	8
Prepared by (Resource Unit Leader) Lisa Hartrick		Approved by (Planning Section Chief) Laura Prevatte		Date 05/24/2011		Time 2130hrs	

DIVISION ASSIGNMENT LIST		1. Ops Chief Ned Brickhouse Derrick Moore (T) Planning OPS – Jeff Burns		2. Division/Group Night Shift			
3. Incident Name PAINS BAY FIRE		4. Operational Period Date: 5/25/2011 Time: 1930-0730 hrs					
5. Operations Personnel							
Division/Group Supervisor	Jonathan Ambrose LDW 5/28	Safety		Mike Kretzchmar, Tom White			
6. Resources Assigned this Period							
Strike Team/Task Force/ Resource Designator	Leader	Number Persons	Last Work Night	Drop Off PT./Time	Pick Up PT./Time		
Pump operator	R. Strickland	1	5/28	1930	0730		
7. Control Operations							
<ul style="list-style-type: none"> Monitor Pump Operations on Div D/E, C, and A/B. 							
8. Special Instructions							
<p>In case of an emergency utilize Dare County VFD radio (800 mhz) to contact County EOC</p> <p>-Work in pairs. -Provide adequate lighting prior to shutting down of pumps for servicing. Stay away from canal banks. -Watch for rattlesnakes and bears. Do not throw food on ground or in canal. -Keep smoke exposure to a minimum but do not stage on Hwy 264. Refer to Safety Message and Medical Plan for more detail.</p>							
9. Division/Group Communication Summary							
Function	Frequency	System	Channel	Function	Frequency	System	Channel
Command		KING NIFC	North 11 South 12	Initial Attack		KING NIFC	
Tactical Div/Group		KING NIFC	1	Air to Ground		KING NIFC	8
Prepared by (Resource Unit Leader) Lisa Hartrick	Approved by (Planning Section Chief) Laura Prevatte			Date 05/24/2011	Time 2130 hrs		

DIVISION ASSIGNMENT LIST		1. Ops Chief Ned Brickhouse Derrick Moore (T) Planning OPS- Jeff Burns		2. Division/Group E,G,H,I,J,K,L			
3. Incident Name PAINS BAY FIRE		4. Operational Period Date: 5/25/2011 Time: 0730-1930hrs					
5. Operations Personnel							
Division/Group Supervisor		Safety		Mike Kretzschmar, Tom White			
6. Resources Assigned this Period							
Strike Team/Task Force/ Resource Designator	Leader	Number Persons	Last Work Day	Drop Off PT./Time	Pick Up PT./Time		
Unstaffed							
7. Control Operations							
8. Special Instructions							
9. Division/Group Communication Summary							
Function	Frequency	System	Channel	Function	Frequency	System	Channel
Command		KING NIFC	North 11 South 12	Initial Attack		KING NIFC	5
Tactical Div/Group		KING NIFC		Air to Ground		KING NIFC	8
Prepared by (Resource Unit Leader) Lisa Hartrick		Approved by (Planning Section Chief) Laura Prevatte		Date 05/24/2011		Time 2130hrs	

AIR OPERATIONS SUMMARY		PREPARED BY: Sherry Tomlinson					PREPARED DATE/TIME: 5/22/2011 1700								
1. INCIDENT NAME Pains Bay Fire		2. OPERATIONAL PERIOD DATE: 5/25/2011					START TIME: 0700		END TIME: 2000		SUNRISE: 0551		SUNSET: 2008		
3. REMARKS (Safety Notes, Hazards, Air Operations Special Equipment, etc.) -PILOTS-WATCH FOR BIRDS AND OTHER AIRCRAFT -BE ALERT FOR HIGH WINDS AND TURBULANCE -NOTE THAT SOME TOWERS ARE NOT MARKED ON SECTIONAL MAPS. TOWERS COULD BE UP TO 2500 FEET TALL -ALL FIREFIGHTING AIRCRAFT NEED TO SQUAWK 1255. FLY WITH LIGHTS ON. -HEADS UP WHEN PERFORMING WATER DROPS AROUND CREWS ON THE GROUND -MAINTAIN CLEAR COMMUNICATIONS Navy Dare Range will be performing air operations in the key hole @ 4000' MSL beginning 5/19						4. MEDEVAC A/C: Dare County Med Flight		5. TFR: 1/2182 A-22 3100' MSL							
6. PERSONNEL		Phone	7. FREQUENCIES		AM	FM	8. FIXED WING # Available/ Type/ Make-Model/FAA N# / Bases								
AOBD: Sherry Tomlinson ASGS/HEB1 Scott Plue		253-293-3523 208-661-6619	AIR/AIR PRIMARY AIR/AIR SECONDARY NATIONAL FLIGHT FOLLOWING (NARROW BAND) ATGS/LEAD/ASM TRANSITION-HANDOFF		123.125 122.425		Heavy Air Tankers Available Through SACC-678-320-3012 ALLIGATOR RIVER DISPATCH 252-473-1744 X 21 -Olive Jones A/C 252-473-1840 252-473-1721 Air Force Tower 252-473-2201 Navy Tower 252-473-2720 Engelhart loading crew: Troy Bryant 252-337-4629 Dave McIntyre Engelhart Airstrip: N35 33.74' X W75 57.31' Edenton Airstrip: N36 01.72 X W76 34.19' Currituck Airstrip: N36 23.94' X W76 0.98'								
ATGS: Bill Palmer ATGS (t) : Donnie Harris ATGS:		828-273-9255 252-475-8012	AIR/AIR RW: SEE ABOVE												
HLCO: NONE			AIR/GROUND: Primary AIR/GROUND: Secondary			Rx 171.575 N Tx 171.575 Tone 131.8 169.925N									
			COMMAND: (Simplex)				Leadplanes								
HEB1: Scott Plue		208-661-6619	COMMAND RPT SEE ICS 205		Rx:	Tx:									
			DECK FREQ:			168.6125	ATGS Aircraft Location: MQI								
			TOLC FREQ:				N11AR A-11 N135BA A-31								
DARE BOMBING RANGE			FOR ENTERING DARE BOMBING RANGE		122.900		Other: SEATS- Available in Kinston - 252-520-2402 Kinston Operations Duty Officer- John Willis Order through Alligator Dispatch								
9. HELICOPTERS (Use Additional Sheets As Necessary)															
FAA N#	TY	MAKE/MODEL	BASE	AVAIL	START	REMARKS	FAA N#	TY	MAKE/MODEL	BASE	AVAIL	START	REMARKS		
N161KA	A-26	1	K-Max	MQI	0900	0930	Chris Sotherland 509-668-1592	N2HX	A-25	3	Bell 407	Pains H.B.	0700	0900	Bob Madison 505-385-0401
N894HA	A-20	3	Bell 206	Pains H.B.	0700	0900	Cory Waters 252-475-0102								

MEDICAL PLAN	1. Incident Name Pains Bay Fire	2. Date Prepared 05/24/11	3. Time Prepared 1530	4. Operational Period 05/25/11 0730-1930	
5. Incident Medical Aid Station					
Medical Aid Stations	Location			Paramedics Yes No	
Dare County Parks and Recreation Bldg (0900-2030hrs)	410 Airport Road Manteo, NC			X	
Stumpy Point VFD (0730-0830hrs)	Stumpy Point			X	
Thomas Christian EMTP (0800 to 2000hrs)	Line EMT Staged Hwy 264 and Point Peter Rd			X	
6. Transportation					
A. Ambulance Services					
Name	Address	Phone	Paramedics Yes No		
Dare County EMS Station #8	6677 Hwy 64 Business, Mann Harbor, NC	Dare Central (911)	X		
Dare County Med Flight	1078 Driftwood Dr., Manteo, NC	911	X		
B. Incident Ambulances					
Name	Location			Paramedics Yes No	
7. Hospitals					
Name	Address	Travel Time Air Ground	Phone	Helipad Yes No	Burn Center Yes No
Outer Banks Hospital	Mile Post 14, 4800 S. Croatan Hwy Nags Head, NC Latitude: N 35° 56' 20.33" Longitude: W 75°45' 5.89"	15 30	(252) 449-4500	X	X
Sentara Norfolk General Hospital	Norfolk, VA	30 90	(757) 388-3000	X	X
8. Medical Emergency Procedures					
<p>Report all injuries and illnesses to the closest DIVS. DIVS will notify the Line EMT and ICP Communications, and include the extent of the injury and transportation needed. Do not use patient's name on the radio. A medical emergency should be declared over the radio immediately. All radio traffic will be kept to a minimum so emergency procedures can proceed uninhibited. ICP Communications will notify Dare Central Dispatch (911) and MEDL. Safety will be notified. Dare County EMS will respond and determine the appropriate treatment, transportation and facility needed. If ground transportation is determined, if possible, assign personnel to meet the ambulance at a location that is easily accessible to lead them to the site of the injured. If patient is transported to meet EMS personnel needs to remain with patient until EMS has arrived. EMT is staged at NCDNR Maintenance Building to respond to injuries and stabilize patient until EMS personnel arrives.</p> <p>For Non emergencies contact the Medical Unit Leader located at ICP. Transportation and treatment will be arranged by MEDL at ICP.</p> <p>Nighttime Operations: Communicate all emergency medical needs directly to Dare County Emergency Communications via 800mhz radio furnished by NCDNR Dare County Ranger, and contact Safety Officers Mike Kretzschmar at 828-413-2588 or Tom White at 910-334-0029.</p>					
Prepared by (Medical Unit Leader) Randy Kearney, MEDL(T) / John Weaver, MEDL			10. Reviewed by (Safety Officer) Mike Kretzschmar / Tom White		

Incident Radio Communications Plan		1. Incident Name: Pains Bay		2. Date/Time Prepared: 05/24/11 1430 hrs		3. Operational Period (Date/Time) 5/25/11	
4. Basic Radio Channel Utilization							
System/Cache	Channel	Function	Frequency/Tone	Assignment	Remarks		
NC Forest Service	CH 1	TAC 1	RX 151.400WIDE TX 151.400W Tone 136.5	Water Handling Group			
NC Forest Service	CH 2	TAC 2	RX 151.460W TX 151.460W Tone 136.5	Div D, E,C,F			
NC Forest Service	CH 3	TAC 3	RX 151.310W TX 151.310W Tone 136.5	Structure Protection Div-M			
NIFC	CH 4	TAC 4	RX 168.050N TX 168.050 NARROW	DIVS A, B			
NIFC	CH 5	TAC 5	RX 168.200N TX 168.200N	Initial Attack ,Div- G Div-N	IA		
NIFC	CH 6	TAC 6	RX 168.600N TX 168.600N	DIV-H Div-O DIV-I			
NIFC	CH 8	US FWS AIR TO GROUND	RX 171.575N TX 171.575 Tone 131.8	Fire Line			
TFS	CH 9	TAC 9	168.350N	FIRE LINE TAC			
US FWS	CH 11	COLUMBIA CMD REPEATER 11	RX 172.675 N TX 168.500 N Tone 118.8	RAWS,CMD NORTH	North COMMUNICATION		
US FWS	CH 12	ENGLEHART CMD REPEATER 12	RX 164.625N TX 163.150 Tone 186.2	CMD South	South COMMUNICATION		
US FWS	CH 13	TAC 13	TX/RX 162.2375N TONE 156.7				
AIR TO GROUND	CH 15	AIR TO GROUND Secondary	RX/TX 169.925				
AIR GUARD	CH 16	Air Guard	RX/TX 168.625 TX Tone 110.9	Emergency contact with Aircraft			
Communications		Comm Unit	828-230-9008	Sam Bodenhamer			
ICS 205	5. Prepared By (Communications Unit Leader): Sam Bodenhamer						

PAINS BAY FIRE CONTACT LIST May 25, 2011

Name	Position	Phone
COMMAND		
Smith, Robert	ICT2	252-813-3721
Miller, Roger	PIO2	828-499-1911
Carlson, Chris	PIO2	919-632-0185
Suttles, Keith	LOFR	828-413-4441
Kretzschmar, Mike	SOF2	828-413-2588
White, Tom	SOF2	910-334-0029
Brassard, Dan	SOF2	208-451-1944
Keith Jenkins	SOF2	828-989-8060
FWS		
Byrant, Mike	Project Leader-NWRs	
		252-216-7505
Lanier, Scott	Deputy Proj Leader- NWRs	
		252-216-7506
Crews, Tom		252-475-4269
Reid, Dana	IBA	541-215-0420
Alligator River NWR		252-473-1131
Czernik, Helen	IBA(T)	252-475-8339
Strawser, Bonnie	PIO2	252-216-8667
Stewart, Dennis	USFWS	252-473-1131x231
COOPERATORS		
Price, RD	Chief, Stumpy Pt Fire Dept	
		252-216-7146
Price, Curtis	Dpty Chief, Stumpy Pt FD	
	cell	252-216-7094
	home	252-475-1040
Sanderson, Sandy	Emergency Mgmt Coord	
		252-473-8326
Shackelford, Rob	NCFS	252-216-5271
	home	252-216-8800
	office	252-473-2531
Patterson, Karen	IBA NCFS	919-218-2586
Christopher, Ed	NCFS	252-542-0119
Doughtie, Doug	Dare County Sheriff	
		252-473-3444
Joe Lafferty	USAF	252-216-8751 cell
		252-473-1906 office
Lt. Cmdr. Marty Hill	US Navy	757-433-1336
OPERATIONS		
Brickhouse, Ned	OSC	252-542-0120
Moore, Derrick 5/25	OSC2(t)	252-717-8286
Burns, Jeff 5/25	OSC2	828-713-0201
Mike Hinson	DIVS A	252-229-1438
Darden, Ricky 5/25	DIVS D,C,F	910-289-8819
Blake, Hagan T. 5/25	DIVS M	910-641-1441
William "Jeff" Koenig 6/5	DIVS O	540-622-3507
Ambrose, Jonathan	DIVS Night	910-512-5822

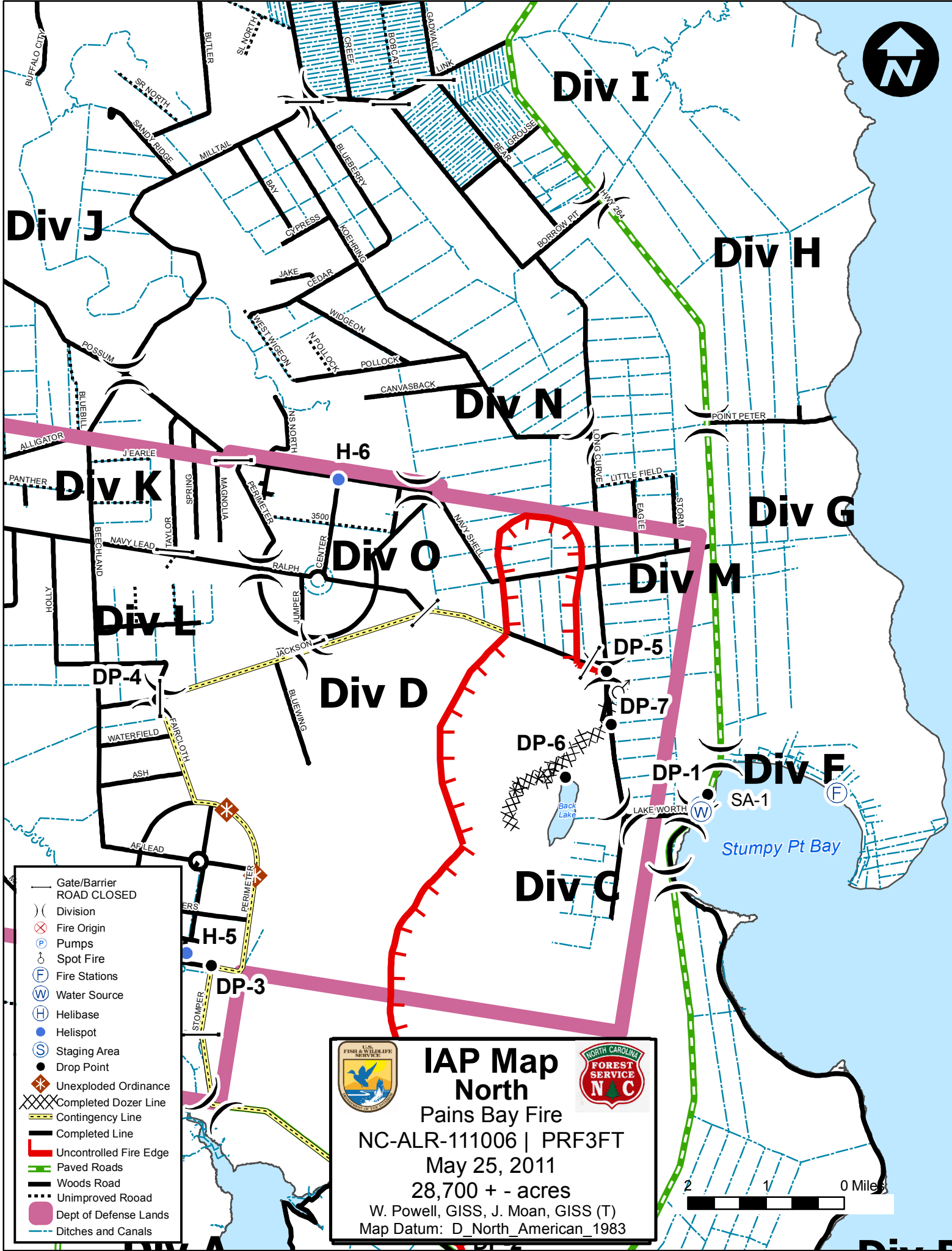
Name	Position	Phone
AIR OPERATIONS		
Tomlinson, Sherry	AOBD	253-293-3523
Plue, Scott	ASGS	208-661-6619
Perry, Jerry	RADO	252-331-3435
PLANS		
Prevatte, Laura	PSC2	910-470-7801
Pickens, Bill	PSC2	919-218-2802
Hartrick, Lisa	RESL	
Bledsoe, Gail	SITL (T)	919-631-0762
Yeich, Brian	SCKN	910-309-8654
Hicks, Greg	SITL	919-545-4501
DeMay, Bill	FOBS	910-334-0032
Huffman, Adam	FOBS	910-309-8775
Powell, Walter	GISS	252-229-0810
Jason Moan	GISS	919-280-7219
Ludlum, Scott	FBAN	252-903-8007
Trickel, Rob	DMOB	919-604-5802
FINANCE		
Roach, Don	FSC2	919-218-4554
Tripp, Teresa	FSC2	
Hall, Renee	PROC	
Plummer, Mary	TIME	704-616-0747
Faustini, Louise	COST	
Baker, Susan	EQTR	252-796-7774
James, Tom	CTSP	919-218-9432
LOGISTICS		
Harris, Roger	LSC2	828-450-0013
Barrow, Neil	LSC2	252-560-6478
Raynor, Patrick	ORDM	336-239-2377
Fay, Susan	ORDM(t)	919-548-5837
Pittman, Kevin	SPUL	919-218-7732
Arney, Derek	RCDM	828-413-2541
Bodenhamer, Sam	COML	828-230-9008
Taylor, Frank	COMT	823-337-7998
Credle, Chuck	COMT	252-944-8464
Comer, Scotty	RADO	910-206-1260
Perry, Alton	FACL	919-218-5511
Hunter, Les	FDUL	919-218-3349
McPherson, Jeff	GSUL	252-312-4379
Bell, Gavin	EQPM	704-813-9127
Evans, Martin	EQPM	252-945-0607
Risen, Derick	EQPM	910-309-8677
Weaver, John	MEDL	720-771-6047
Kearney, Randy	MEDL(t)	919-727-0954
Jimmy Riner	SECM	270-703-0136

Fire Information

<http://www.facebook.com/?ref=home#!/pages/NC-Division-of-Forest->
<http://www.inciweb.org/incident/2218/>

ICP Fax
ICP
NWR Dispatch

252-473-1162
252-473-1137
252-473-1744 x 21



Div J

Div I

Div H

Div N

Div G

Div K

Div O

Div M


Div L

Div D

Div F

Div C

- Gate/Barrier
- ROAD CLOSED
-)) Division
- ⊗ Fire Origin
- ⊙ Pumps
- ⊙ Spot Fire
- ⊙ Fire Stations
- ⊙ Water Source
- ⊙ Helibase
- Helispot
- ⊙ Staging Area
- Drop Point
- ⊗ Unexploded Ordinance
- XXXX Completed Dozer Line
- Contingency Line
- Completed Line
- Uncontrolled Fire Edge
- Paved Roads
- Woods Road
- Unimproved Road
- Dept of Defense Lands
- Ditches and Canals



IAP Map North

Pains Bay Fire


NC-ALR-111006 | PRF3FT

May 25, 2011

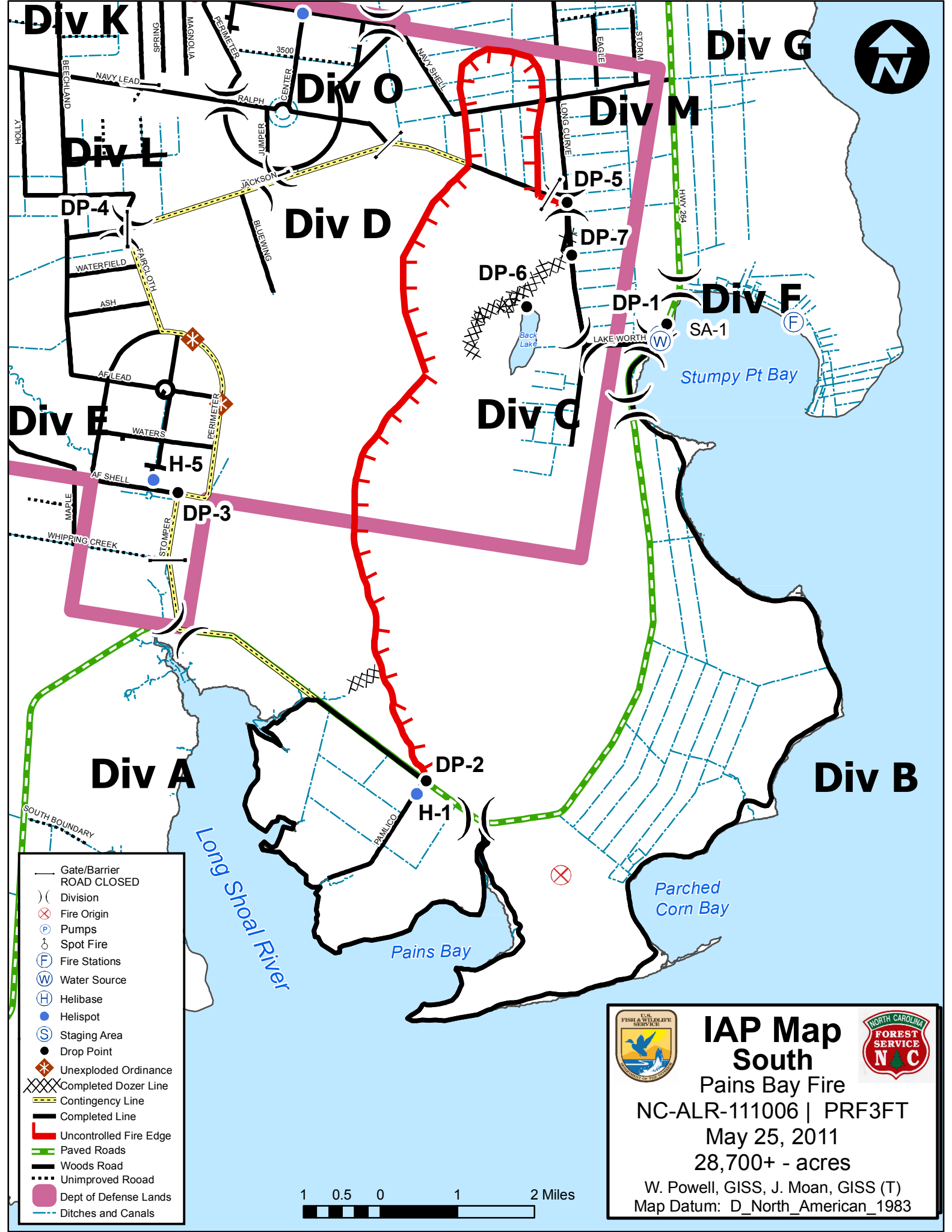
28,700 + - acres

W. Powell, GISS, J. Moan, GISS (T)

Map Datum: D_North_American_1983








- Gate/Barrier
- ROAD CLOSED
-)) Division
- ⊗ Fire Origin
- ⊙ Pumps
- ⊙ Spot Fire
- ⊙ Fire Stations
- ⊙ Water Source
- ⊙ Helibase
- ⊙ Helispot
- ⊙ Staging Area
- Drop Point
- ⊗ Unexploded Ordinance
- XXXX Completed Dozer Line
- Contingency Line
- Completed Line
- ┌ Uncontrolled Fire Edge
- Paved Roads
- Woods Road
- ⋯ Unimproved Road
- Dept of Defense Lands
- Ditches and Canals





IAP Map South

Pains Bay Fire


NC-ALR-111006 | PRF3FT

May 25, 2011

28,700+ - acres

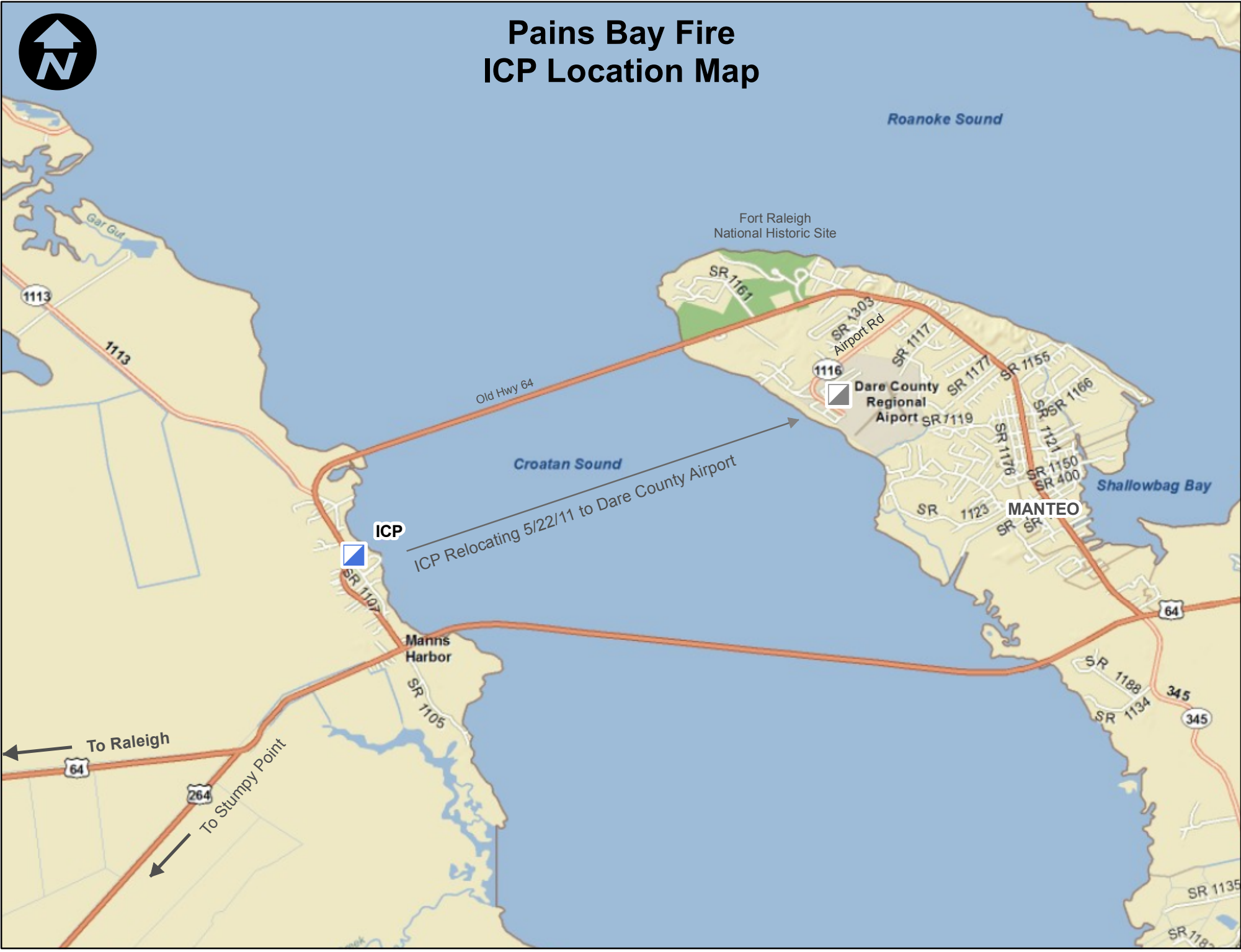
W. Powell, GISS, J. Moan, GISS (T)

Map Datum: D_North_American_1983





Pains Bay Fire ICP Location Map



☐ WEATHER FORECAST – Wednesday 5/25/2011

.WEDNESDAY...

SKY/WEATHER.....MOSTLY SUNNY ISOLATED AFTERNOON THUNDERSTORMS.
 MAX TEMPERATURE.....AROUND 91.
 MIN HUMIDITY.....49 PERCENT.
 20-FOOT WINDS.....LIGHT AND VARIABLE WINDS...BECOMING SOUTHEAST
 7 TO 10 MPH LATE. GUSTY AND ERRATIC WINDS
 EXPECTED NEAR THUNDERSTORMS IN THE AFTERNOON.
 HAINES INDEX.....3 TO 4 OR OR VERY LOW POTENTIAL FOR LARGE PLUME
 DOMINATED FIRE GROWTH TO OR LOW POTENTIAL FOR
 LARGE PLUME DOMINATED FIRE GROWTH.
 MIXING HEIGHT.....1500 FT AGL...INCREASING TO 6000 FT
 AGL.
 TRANSPORT WINDS....NORTHEAST 3 TO 6 MPH...BECOMING WEST 2 TO 3 MPH
 LATE IN THE MORNING...THEN BECOMING SOUTHEAST 5
 TO 8 MPH IN THE AFTERNOON.
 LVORI.....4.

TIME (EDT)	6AM	8AM	10AM	NOON	2PM	4PM	6PM	8PM	10PM	MIDNGT	2AM	4AM
SKY (%).....	47	39	39	38	37	37	37	37	36	32	30	36
WEATHER COV.....						ISOLTD	ISOLTD	ISOLTD				
WEATHER TYPE.....	NONE	NONE	NONE	NONE	TSTORM	TSTORM	TSTORM	NONE	NONE	NONE	NONE	NONE
TEMP.....	71	75	82	87	90	89	87	83	78	76	73	73
RH.....	93	82	63	53	49	50	55	63	74	79	87	87
20 FT WIND (MPH)....	W 4	W 3	N 2	NE 3	E 3	SE 7	SE 5	SE 5	S 5	S 5	SW 5	SW 5
20 FT WIND GUST.....	5	5		5	5	5						
LVORI.....	7	5	3	2	2	2	1	2	3	4	6	6
HAINES INDEX.....	3	4	4	4	3	3	3	3	3	3	3	3

☐ FIRE BEHAVIOR- Wednesday 5/25/2011

Scott Ludlum – FBAN 252-903-8007

Previous Fire Behavior- Surface fire continued to move to the Northeast with torching observed in many areas.

Predicted Fire Behavior- The biggest concern for today will be the shift in wind directions, winds in the morning will be from the West-Northwest shifting clockwise through the day to the East by the end of shift. Watch for torching that could loft embers across control lines. During peak wind gust expect torching and rapid rates of spread, especially after the fire grows much larger than an acre. Be aware of the local sea breeze influence and thunderstorm outflows, this will increase rates of spread and can change the fire direction very suddenly.

Fuels/Fuel Model- Pocosin (Tall Brush) - FM sh9

Rates of Spread- 38 ch/hr <i>12 ch. lower (24 hr trend)</i>	Flame Lengths- 16 ft. <i>2 ft. lower (24 hr trend)</i>	Probability of Ignition- 50% <i>12% higher (24 hr trend)</i>	Spotting- 0.2 Miles <i>No Change (24 hr trend)</i>
--	---	---	---

Fuel Moisture- (* indicates new maximum indices may be set for this day)

1 HR (1/4" or less) 7% <i>2% lower (24 hr trend)</i>	10 HR (1/4"-1") 12% <i>No Change (24 hr trend)</i>	100 HR (1-3") 16% <i>No Change (24 hr trend)</i>	1000 HR (3-8") 18% <i>No Change (24 hr trend)</i>	Live Woody 70% <i>No Change (24 hr trend)</i>
--	--	--	---	---

Predicted Fire Danger Readings- Dare Bomb Range (* indicates new maximum indices may be set for this day)

Ignition Component *27 <i>7 higher (24 hr trend)</i>	Spread Component 11 <i>1 higher (24 hr trend)</i>	Energy Release Component 30 <i>6 higher (24 hr trend)</i>	Burning Index 43 <i>5 higher (24 hr trend)</i>	KBDI *475 <i>12 higher (24 hr trend)</i>
--	---	---	--	--

Controllability- Indirect attack should be used if fires become established. Use of aircraft should always be utilized. Safety of firefighters is of a critical concern.

SAFETY MESSAGE

TAILGATE BRIEFING SHEET

DATE: 5/25/11

Signature/Date

Communication Responsibilities

All firefighters have five communications responsibilities :

Brief others as needed

Debrief your actions

Communicate hazards to others

Acknowledge messages

Ask if you don't know

In addition, all leaders must provide complete briefings that include a clearly stated "Leader's Intent".

Task = What is to be done

Purpose = Why it is to be done

End State = How it should look when done

Mitigating Transition

Transition is a red flag event.

Accidents often increase at this time.

Effective communications is imperative.

Brief others, as needed.

Debrief your actions.

Communicate hazards to others.

Acknowledge messages.

Ask, if you don't know.

SAFETY OFFICERS: Mike Kretzschmar, Tom White

LINE SAFETY OFFICERS: Dan Brassard, Keith Jenkins

UNIT LOG	1. Incident Name	2. Date Prepared	3. Time Prepared
4. Unit Name/Designators	5. Unit Leader (Name and Position)		6. Operational Period
7. Personnel Roster Assigned			
Name	ICS Position	Home Base	
8. Activity Log			
Time	Major Events		
9. Prepared by (Name and Position)			