

# PAINS BAY FIRE

NC-ALR-111006  
PRF3FT (1502)



## Incident Action Plan

***THURSDAY***

**May 26, 2011**

**0730-1930 hrs**



<b>INCIDENT OBJECTIVES</b>	<b>1. Incident Name</b> <b>PAINS BAY FIRE</b>	<b>2. Date Prepared</b> <b>5/25/2011</b>	<b>3. Time Prepared</b> <b>2130 hrs</b>
<b>4. Operational Period</b>  <b>Thursday, May 26, 2011 0730 to 1930 hrs</b>			
<b>5. Incident Objectives</b>  <b>Control Objectives</b> <ol style="list-style-type: none"> <li>1. Provide for the safety of firefighters and general public by adherence to the 10 standard fire orders, 18 watch-out situations, in addition to maintaining direct and clear communications with all incident personnel and the general public.</li> <li>2. Keep fire contained within the newly established boundaries for indirect attack suppression strategy. This will be west of US Highway 264, south of US Highway 64 and east of Milltail Creek</li> <li>3. Conduct triage and prepare structures on the North side of Bayview Rd in the village of Stumpy Point. Coordinate with Dare Emergency Mangement Coordinator to initiate evacuation if fire threatens the village of Stumpy Point.</li> <li>4. Expedite the safe opening of US Hwy 264 as soon as operational objectives are met to minimize threat to Stumpy Point community.</li> <li>5. Continue soil saturation to extinguish ground fire by maintaining water in plugged canals.</li> <li>6. Mop-up a minimum of 500 feet into the fire perimeter</li> <li>7. Ensure that suppression &amp; containment strategies on FWS property follow minimum impact suppression tactics. Escalation of tactics should consider amount of progress being made with current tactics, and the likelihood of those tactics being successful.</li> </ol> <b>Management Objectives</b> <ol style="list-style-type: none"> <li>1. Keep general public &amp; local officals in affected counties, as well as incident stake holders informed of fire status through situation updates and personal contacts at least every other day.</li> <li>2. Provide for accurate cost tracking and documentation of incident in accordance with IBH (Incident Business Handbook) procedures.</li> <li>3. Emphasize cost containment through continual assessment of personnel and resource needs to provide (right-sizing) of incident.</li> <li>4. Develop a concise transition document in preparation for a transfer of command to the incoming Incident Mangement Team.</li> </ol>			
<b>6. Weather Forecast For Period</b>  <b>See Attached Tailgate Safety Briefing Sheet.</b>			
<b>7. General Safety Message</b>  <b>See Attached Tailgate Safety Briefing Sheet.</b>			
<b>8. Attachments (mark if attached)</b>			
<ul style="list-style-type: none"> <li>✓ <b>Organizational List – ICS 203</b></li> <li>✓ <b>Div. Assignment Lists - ICS 204</b></li> <li>✓ <b>Air Operations Summary- ICS 220</b></li> <li>✓ <b>Communications Plan - ICS 205</b></li> <li>✓ <b>Medical Plan - ICS 206</b></li> </ul>		<ul style="list-style-type: none"> <li>✓ <b>Contact List</b></li> <li>✓ <b>Incident Map</b></li> <li>✓ <b>Tailgate Safety Briefing Sheet</b></li> <li>✓ <b>Unit Log - ICS 214</b></li> </ul>	
<b>9. Prepared by (Planning Section Chief)</b>		<b>10. Approved by (Incident Commander)</b>	

ORGANIZATION ASSIGNMENT LIST		9.	Operations Section	
<b>1. Incident Name</b>		Chief	Ned Brickhouse 6/3 Jeff Burns 5/25 Derrick Moore(T) 5/25	
Pains Bay Fire NC-ALR-111006				
<b>Divisions/Groups</b>				
<b>2. Date</b> 5/25/2011	<b>3. Time</b> 1800 hrs	Division/Group	A, B	Mike Hinson 6/2
		Division/Group	D, C, F	Rickie Darden 5/25
<b>4. Operational Period</b> <b>5/26/2011 0730-1930hrs</b>		Division/Group	M	Hagan Blake 5/25
<b>5. Incident Commander and Staff</b>		Division/Group	N	Aaron Gay 5/27
Incident Commander	Robert Smith			
Safety Officer	Mike Kretzschmar Tom White	Division/Group	O	W. Jeff Koenig 6/5
Information Officer	Roger Miller Chris Carlson	Division/Group	IA	Eric Meekins 5/30
Liason Officer	Keith Suttles	Division/Group	Structure Protection	Greg Riggs 6/3
<b>6 a. Agency Administrators</b>		Division/Group	Staging Area	
FWS	Mike Byrant	Division/Group	Night Shift	Jonathan Ambrose 5/28
FWS	Scott Lanier	Division/Group	E, G,H,I,J,K, L	Unstaffed
<b>b. Agency Representatives</b>		Division/Group	Water Handling	Miller Caison 6/3
NCFS	Ed Christopher			
NCFS	Greg Pate			
FWS	Bonnie Strawser			
FWS	Tom Crews			
Emer. Mgmt. Coord	Sandy Sanderson			
Stumpy Pt.Fire Dept	Curtis Price			
US Navy	Lt. Cmdr. Marty Hill			
US Airforce	Joe Lafferty	<b>d. Air Operations Branch</b>		
<b>7. Planning Section</b>		Air Ops Branch Director	Sherry Tomlinson 5/29	
Chief	Laura Prevatte/ Bill Pickens	Air Support Group Sup	Scott Plue 5/29	
Resources Unit	Lisa Hartrick			
Status Check-in	Brian Yeich	<b>10. Finance Section</b>		
Situation Unit	Greg Hicks,	Chief	Teresa Tripp / Don Roach	
FOBS	Bill DeMay	Equipment	Susan Baker	
Fire Behavior Analyst	Scott Ludlum, Gary Curcio	Cost	Louise Faustini	
Demobilization	Rob Trickel	Time	Mary Plummer	
		PROC	Renee Hall	
GIS	Walter Powell, Jason Moan	CTSP	Tom James	
<b>8. Logistics Section</b>		IBA	Dana Reid 6/2 Helen Czernik (T) 6/5	
Chief	Roger Harris, Neil Barrow			
Receiving Manager	Derek Arney			
Supply Unit	Kevin Pittman			
Ground Support Unit	Jeff McPherson			
Security Manager	Jimmy Riner			
Communications Unit	Sam Bodenhamer			
Communications Tech	Chuck Credle			
RADO	Jerry Perry/ Scotty Comer			
Medical Unit	John Weaver, Randy Kearney(T)			
EMT	T. Christian			
Ordering Manager	Patrick Raynor,Susan Fay(T)			
Equipment	Gavin Bell / Martin Evans 6/7 Derek Risen	Prepared by: Lisa Hartrick, RESL		
Facilities/Food Unit	Alton Perry/Les Hunter			

<b>DIVISION ASSIGNMENT LIST</b>		1. Ops Chief Ned Brickhouse Derrick Moore (T) Planning OPS – Jeff Burns		2. Division/Group <b>Division A, B</b>			
3. Incident Name <b>PAINS BAY FIRE</b>		4. Operational Period Date: 5/26/2011 Time: 0730-1930hrs					
5. <i>Operations Personnel</i>							
Division/Group Supervisor	Mike Hinson O- 194 LDW 6/2	Safety	Mike Kretzschmar, Tom White				
6. <i>Resources Assigned this Period</i>							
Strike Team/Task Force/ Resource Designator	Leader	Number Persons	Last Work Day	Drop Off PT./Time	Pick Up PT./Time		
E-377 Pump operators	J. Chandler / Carter	2	6/1	0730hrs	1930hrs		
E-378 Pump operators	A. Goins / Bryan	2	6/1	0730hrs	1930hrs		
7. Control Operations <ul style="list-style-type: none"> <li>Patrol and mop up</li> <li>Run irrigation operations</li> </ul>							
8. Special Instructions <ul style="list-style-type: none"> <li>Limit use of foam within 300 ft of any water source.</li> <li>US 264 has re-opened to public traffic. Be Alert.</li> </ul>							
9. <i>Division/Group Communication Summary</i>							
Function	Frequency	System	Channel	Function	Frequency	System	Channel
Command south		KING NIFC	<b>North 11 South 12</b>	Initial Attack		KING NIFC	<b>5</b>
Tactical Div/Group		KING NIFC	<b>4</b>	Air to Ground		KING NIFC	<b>8</b>
Prepared by (Resource Unit Leader) Lisa Hartrick	Approved by (Planning Section Chief) Laura Prevatte			Date 05/25/2011	Time 2030 hrs		

<b>DIVISION ASSIGNMENT LIST</b>			1. Ops Chief Ned Brickhouse Derrick Moore (T) Planning OPS – Jeff Burns		2. Division/Group  <b>Division D, C, F</b>		
3. Incident Name <b>PAINS BAY FIRE</b>			4. Operational Period Date: 5/26/2011 Time: 0730-1930hrs				
5. <i>Operations Personnel</i>							
Division/Group Supervisor		Rickie Darden O-150.36 LWD 5/25		Safety		Mike Kretzshmar, Tom White	
6. <i>Resources Assigned this Period</i>							
Strike Team/Task Force/ Resource Designator		Leader		Number Persons	Last Work Day	Drop Off PT./Time	Pick Up PT./Time
E-306 Pump operators		M. Bishop / Bell		2	5/26	0730hrs	1930hrs
E-307 Pump operators		D. McCoy / Hendrick		2	5/26	0730hrs	1930hrs
THSP		M. Gibbs O-41		1	6/3	0730hrs	1930hrs
ES6; E-388; NCS#4 STEN		J. Marlowe		1	6/3	0730hrs	1930hrs
ENG6		L. Thompson/ H. Marks		2	6/3	0730hrs	1930hrs
ENG6		J. Cranfill/ R. Gore		2	6/3	0730hrs	1930hrs
ENG6		W. Loudermelt/ K. Robinson		2	6/3	0730hrs	1930hrs
ENG6		J. Land/ P. Story		2	6/3	0730hrs	1930hrs
ENG6		D. Vigil/ C. Choplin		2	6/3	0730hrs	1930hrs
STDZ		S. Sheets O-189		1	5/31	0730hrs	1930hrs
Flex Trac; E-329; AX6 FWS		J. Powers O-34 / E. Spruill O-88		2	___ & 6/4	0730hrs	1930hrs
Flex Trac; E-33; 13x2		C. Gibbs O-102 / A. Harris O-100		2	6/4 & 6/5	0730hrs	1930hrs
Flex Trac; 13x64; E-264 DBR		R. Page / P. Meekins		2	6/7 & 5/30	0730hrs	1930hrs
Flex Trac; 13x66; E-_____ DBR		A.Mann / Whitney		2	6/6 & 6/6	0730hrs	1930hrs
Flex Trac; 13x68; E-_____; DBR		T. Harrell		1	6/10	0730hrs	1930hrs
T2DOZ; E-228; 13X62 DBR		Terrell		1		0730hrs	1930hrs
T2DOZ; E-35; 13X67 DBR		Bryant		1		0730hrs	1930hrs
7. Control Operations							
<ul style="list-style-type: none"> <li>• Continue direct line operation south of Jackson Road.</li> <li>• Continue to hold and irrigate around spots on Long Curve Road</li> <li>• Identify critical areas and special needs for contingency burnout operations on Foxtrot.</li> <li>• Patrol Lake Worth Road.</li> <li>• Secure DBR shop and 2 structures west of Hwy 264, if fire establishes itself east of Long Curve Road</li> </ul>							
8. Special Instructions							
<ul style="list-style-type: none"> <li>• Limit use of foam within 300 ft of any water source.</li> <li>• US 264 has re-opened to public traffic. Be Alert.</li> </ul>							
9. <i>Division/Group Communication Summary</i>							
Function	Frequency	System	Channel	Function	Frequency	System	Channel
Command south		KING NIFC	North 11 South 12	Initial Attack		KING NIFC	5
Tactical Div/Group		KING NIFC	2	Air to Ground		KING NIFC	8
Prepared by (Resource Unit Leader) Lisa Hartrick		Approved by (Planning Section Chief) Laura Prevatte			Date 05/25/2011		Time 2130 hrs

<b>DIVISION ASSIGNMENT LIST</b>		1. Ops Chief Ned Brickhouse Derrick Moore (T) Planning OPS – Jeff Burns		2. Division/Group  <b>M</b>			
3. Incident Name <b>PAINS BAY FIRE</b>		4. Operational Period Date: 5/26/2011 Time: 0730-1930hrs					
5. Operations Personnel							
Division/Group Supervisor		Thomas “Hagan” Blake O-150.38 LWD 05/26		Safety		Mike Kretzshmar, Tom White	
6. Resources Assigned this Period							
Strike Team/Task Force/ Resource Designator	Leader		Number Persons	Last Work Day	Drop Off PT./Time	Pick Up PT./Time	
T6 ENG; E-9; VA-SHP	J. Jarrells / D. Good / A. Williams		3	6/5	0730hrs	1930hrs	
E-308 Pump operators	C. Speary, Scott		2	5/26	0730hrs	1930hrs	
WAT3; E-309; 7E1 NCF5	R. Fleming		1	5/26	0730hrs	1930hrs	
ES6 ; NCS#5 ; E-389 STEN	J. Tate		1	6/3	0730hrs	1930hrs	
ENG6 6-63	B. Canady / R. Freeman		2	6/3	0730hrs	1930hrs	
ENG6 6-32	T. Steves / J. Turnage		2	6/3	0730hrs	1930hrs	
ENG6 6-40	B. Morgan / A. Cagle		2	6/3	0730hrs	1930hrs	
ENG 6 2-41	A. Farmer / J. Keener		2	6/3	0730hrs	1930hrs	
ENG6 2-31	D. Wahlers / D.S. Mitchell		2	6/3	0730hrs	1930hrs	
TFLD	B. Miller E-9.4 / J. Weaver (T) O-150.42		2	5/31 & 5/28	0730hrs	1930hrs	
Flex Trac; E-313; DX7	L. “Mel” Guthrie O-167		1	5/27	0730hrs	1930hrs	
Flex Trac; _____; PX5	W. Lowe O-195		1	6/5	0730hrs	1930hrs	
7. Control Operations							
<ul style="list-style-type: none"> <li>• Prep for burn out and hold Long Curve Road.</li> <li>• Burn out pocket if conditions warrant.</li> <li>• Identify critical areas and special needs</li> <li>• T6 Engines begin pump operation for mop up</li> </ul>							
8. Special Instructions							
<ul style="list-style-type: none"> <li>• Identify escape routes if Long Curve Road is compromised.</li> <li>• Limit use of foam within 300 ft of any water source.</li> <li>• US 264 has re-opened to public traffic. Be Alert.</li> </ul>							
9. Division/Group Communication Summary							
Function	Frequency	System	Channel	Function	Frequency	System	Channel
Command		KING NIFC	<b>North 11 South 12</b>	Initial Attack		KING NIFC	<b>5</b>
Tactical Div/Group		KING NIFC	<b>3</b>	Air to Ground		KING NIFC	<b>8</b>
Prepared by (Resource Unit Leader) Lisa Hartrick		Approved by (Planning Section Chief) Laura Prevatte			Date 05/25/2011		Time 2130 hrs

<b>DIVISION ASSIGNMENT LIST</b>		1. Ops Chief Ned Brickhouse Derrick Moore (T) Planning OPS – Jeff Burns		2. Division/Group  <b>N</b>			
3. Incident Name <b>PAINS BAY FIRE</b>		4. Operational Period Date: 5/26/2011 Time: 0730-1930hrs					
5. <i>Operations Personnel</i>							
Division/Group Supervisor		Aaron Gay 5/27		Safety			
				Mike Kretzshmar, Tom White			
6. Resources Assigned this Period							
Strike Team/Task Force/ Resource Designator	Leader	Number Persons	Last Work Day	Drop Off PT./Time	Pick Up PT./Time		
TFLD	Jon Albertson O-193	1	6/2	0730 hrs	1930 hrs		
T6 ENG; E-6; VA-VAF	L. Shaw / Fultz / Blevins	3	5/24	0730 hrs	1930 hrs		
T6 ENG; E-8; VA-VAF	T. Caudill / Tanquay / Wolfe	3	5/24	0730hrs	1930hrs		
WAT3; E-385; 13E1	R. Davis	1	---	0730hrs	1930hrs		
ST DZ	A. Hux O-39	1	5/31	0730hrs	1930hrs		
T2DOZ; E- ; 13X51		1		0730hrs	1930hrs		
T2DOZ; E- ; 13X61		1		0730hrs	1930hrs		
Marsh Master; E-222; DBR	unstaffed	0					
ES6; E-390; NCS#6 STEN	F. Harris	1	6/3	0730hrs	1930hrs		
ENG6 5-20	K. Bunting / E. Matherly	2	6/3	0730hrs	1930hrs		
ENG6 5-70	R. Black / L. Whicker	2	6/3	0730hrs	1930hrs		
ENG6 5-50	J. Short / J. Cumbo	2	6/3	0730hrs	1930hrs		
ENG6 8-31	K. Powell / J. Cook	2	6/3	0730hrs	1930hrs		
ENG6 E-397 FWS	J. Tripp / Wyatt	2	6/2	0730hrs	1930hrs		
SOF2	Keith Jenkins O-186	1	6/4	0730hrs	1930hrs		
7. Control Operations							
<ul style="list-style-type: none"> <li>• Complete Direct Attack.</li> <li>• Control line North of Navy Shell.</li> <li>• Prep area for burn out from DIV N/M break west along fuel break to Navy Shell Rd.</li> <li>• Identify critical areas and special needs.</li> <li>• Launch Bridge as needed</li> <li>• T6 Engines begin pump operation for mop up.</li> </ul>							
8. Special Instructions							
<ul style="list-style-type: none"> <li>• Limit use of foam within 300 ft of any water source.</li> <li>• Identify escape routes and safety zones.</li> <li>• US 264 has re-opened to public traffic. Be Alert.</li> </ul>							
9. Division/Group Communication Summary							
Function	Frequency	System	Channel	Function	Frequency	System	Channel
Command		KING NIFC	North 11 South 12	Initial Attack		KING NIFC	5
Tactical Div/Group		KING NIFC	5	Air to Ground		KING NIFC	8
Prepared by (Resource Unit Leader) Lisa Hartrick		Approved by (Planning Section Chief) Laura Prevatte		Date 05/25/2011		Time 2130 hrs	

<b>DIVISION ASSIGNMENT LIST</b>		1. Ops Chief Ned Brickhouse Derrick Moore (T) Planning OPS – Jeff Burns		2. Division/Group  <b>O</b>			
3. Incident Name <b>PAINS BAY FIRE</b>		4. Operational Period Date: 5/26/2011 Time: 0730-1930hrs					
5. <i>Operations Personnel</i>							
Division/Group Supervisor		W. Jeff Koenig O-191		Safety			
				Mike Kretzshmar, Tom White			
6. <i>Resources Assigned this Period</i>							
Strike Team/Task Force/ Resource Designator	Leader	Number Persons	Last Work Day	Drop Off PT./Time	Pick Up PT./Time		
STEN	D. Poole O-192	1	6/2	0730hrs	1930hrs		
ENG6; E-13; SC-FMF	Ray / Wyman / Rister	3	6/2	0730 hrs	1930 hrs		
ENG6; E-14; IL-SHF	Paukert / Hancock / Walker	3	6/2	0730hrs	1930hrs		
WAT3; E-310; 4E1 NCFS	J. Drake	1	5/26	0730hrs	1930hrs		
7. Control Operations							
<ul style="list-style-type: none"> <li>• T6 Engines begin pump operations for mop up between Jackson Road and Navy Shell Road.</li> <li>• Assist water group as needed.</li> <li>• Coordinated resources with Div N and Div D as needed.</li> </ul>							
8. Special Instructions							
<ul style="list-style-type: none"> <li>• Limit use of foam within 300 ft of any water source.</li> <li>• Establish contact with Liaison for Navy Range see Keith Suttles.</li> <li>• US 264 has re-opened to public traffic. Be Alert.</li> </ul>							
9. <i>Division/Group Communication Summary</i>							
Function	Frequency	System	Channel	Function	Frequency	System	Channel
Command		KING NIFC	<b>North 11 South 12</b>	Initial Attack		KING NIFC	<b>5</b>
Tactical Div/Group		KING NIFC	<b>6</b>	Air to Ground		KING NIFC	<b>8</b>
Prepared by (Resource Unit Leader) Lisa Hartrick		Approved by (Planning Section Chief) Laura Prevatte		Date 05/25/2011		Time 2130 hrs	



<b>DIVISION ASSIGNMENT LIST</b>		1. Ops Chief Ned Brickhouse Derrick Moore (T) Planning OPS – Jeff Burns		2. Division/Group  <b>WATER HANDLING</b>			
3. Incident Name <b>PAINS BAY FIRE</b>		4. Operational Period Date: 5/26/2011 Time: 0730-1930hrs					
5. Operations Personnel							
Division/Group Supervisor		F. Miller Caison O- 205 LDW 6/3		Safety		Mike Kretzshmar, Tom White	
6. Resources Assigned this Period							
Strike Team/Task Force/ Resource Designator		Leader		Number Persons	Last Work Day	Drop Off PT./Time	Pick Up PT./Time
WHSP		W. Payne O-164		1	5/27& 5/31	0730hrs	1930hrs
4 - Tractors with 16" Lift Pumps; NC-DFR		E-314, E-315, E-360, E-361 E-255, E-256, S-13, S-14		0			
2 – 18" Volume Lift Pumps		E-354, S-5150		0			
6 – 6" Water Pumps 3 – 2.5 " Pumps		E-338, E-339, E-5191, E-5192, S5151, S-5352		0			
Mop-up Truck; E-359 NCFS				0			
2 – Mop-up trailers NCFS		E-239, E-240		0			
Excavator ; PA00736; E-204; DBR		B. Grubbs		1			
Excavator; 200; E-249; ALR				0			
7. Control Operations							
8. Special Instructions		<ul style="list-style-type: none"> <li>US 264 has re-opened to public traffic. Be Alert.</li> </ul>					
9. Division/Group Communication Summary							
Function	Frequency	System	Channel	Function	Frequency	System	Channel
Command		KING NIFC	<b>North 11 South 12</b>	Initial Attack		KING NIFC	<b>5</b>
Tactical Div/Group		KING NIFC	<b>1</b>	Air to Ground		KING NIFC	<b>8</b>
Prepared by (Resource Unit Leader) Lisa Hartrick		Approved by (Planning Section Chief) Laura Prevatte			Date 05/25/2011		Time 2130 hrs

<b>DIVISION ASSIGNMENT LIST</b>		1. Ops Chief Ned Brickhouse Derrick Moore (T) Planning OPS- Jeff Burns		2. Division/Group <b>Structure Protection Group</b>			
3. Incident Name <b>PAINS BAY FIRE</b>		4. Operational Period Date: 5/26/2011 Time: 0730-1930hrs					
5. Operations Personnel							
Division/Group Supervisor		Greg Riggs O- 204 LDW 6/3		Safety Mike Kretzschmar, Tom White			
6. Resources Assigned this Period							
Strike Team/Task Force/ Resource Designator	Leader	Number Persons	Last Work Day	Drop Off PT./Time	Pick Up PT./Time		
ICT4 / LIASON	R. Shackelford O-38	1	5/28	07300hrs	1930hrs		
ENG; Stumpy VFD	on station	4		07300hrs	1930hrs		
ENG; Manns Harbor VFD*	on station	5		07300hrs	1930hrs		
ENG; Roanoke Island VFD*	on station	4		07300hrs	1930hrs		
Dare County VFD Resources	on station			0730hrs	1930hrs		
7. Control Operations							
<ul style="list-style-type: none"> <li>Available to execute Stumpy Point Evacuation Plan if identified trigger points are met.</li> <li>Triage and prep structures for burnout operations in Stumpy Point community.</li> <li>US 264 has re-opened to public traffic. Be Alert.</li> </ul>							
8. Special Instructions							
<ul style="list-style-type: none"> <li>Mann's Harbor and Roanoke Island VFDs are call-when-needed.</li> <li>Limit use of foam within 300 ft of any water source.</li> </ul>							
9. Division/Group Communication Summary							
Function	Frequency	System	Channel	Function	Frequency	System	Channel
Command		KING NIFC	<b>North 11 South 12</b>	Initial Attack		KING NIFC	<b>5</b>
Tactical Div/Group		KING NIFC	<b>3</b>	Air to Ground		KING NIFC	<b>8</b>
Prepared by (Resource Unit Leader) Lisa Hartrick		Approved by (Planning Section Chief) Laura Prevatte		Date 05/25/2011		Time 2130hrs	

<b>DIVISION ASSIGNMENT LIST</b>		1. Ops Chief Ned Brickhouse Derrick Moore (T) Planning OPS – Jeff Burns		2. Division/Group <b>Staging Area (Stumpy Point Ferry Dock)</b>			
3. Incident Name <b>PAINS BAY FIRE</b>		4. Operational Period <i>Date:</i> 5/26/2011 <i>Time:</i> 0730-1930hrs					
5. <i>Operations Personnel</i>							
<b>Staging Manager</b>		<b>Safety</b>		<b>Mike Kretzshmar, Tom White</b>			
6. <i>Resources Assigned this Period</i>							
Strike Team/Task Force/ Resource Designator	Leader	Number Persons	Last Work Day	Drop Off PT./Time	Pick Up PT./Time		
Grader; E-221	Mann	1	6/6	0730hrs	1930hrs		
7. Control Operations							
<ul style="list-style-type: none"> <li>● Report to Stumpy Point Bay Ferry Dock and Monitor Command channels</li> <li>● US 264 has re-opened to public traffic. Be Alert.</li> </ul>							
8. Special Instructions							
9. <i>Division/Group Communication Summary</i>							
Function	Frequency	System	Channel	Function	Frequency	System	Channel
Command		KING NIFC	<b>North 11</b> <b>South 12</b>	Initial Attack		KING NIFC	<b>5</b>
Tactical Div/Group		KING NIFC		Air to Ground		KING NIFC	<b>8</b>
Prepared by (Resource Unit Leader)		Approved by (Planning Section Chief)		Date		Time	
Lisa Hartrick		Laura Prevatte		05/25/2011		2130 hrs	

<b>DIVISION ASSIGNMENT LIST</b>		1. Ops Chief Ned Brickhouse Derrick Moore (T) Planning OPS- Jeff Burns		2. Division/Group <b>Initial Attack Group</b>			
3. Incident Name <b>PAINS BAY FIRE</b>		4. Operational Period Date: 5/26/2011 Time: 0730-1930hrs					
5. <i>Operations Personnel</i>							
<b>Division/Group Supervisor</b>		E. Meekins O-166 LWD 5/30		<b>Safety</b> Mike Kretzschmar, Tom White			
6. <i>Resources Assigned this Period</i>							
Strike Team/Task Force/ Resource Designator	Leader	Number Persons	Last Work Day	Drop Off PT./Time	Pick Up PT./Time		
ICT4	R. Shackelford O-38	1	5/28	0730hrs	1930hrs		
T6 ENG; E200; PLE2	A. Davis O-144 M. Howle O-35	2	6/3	0730hrs	1930hrs		
WAT3; E-379 NC	unstaffed	0		0730hrs	1930hrs		
TPL2; AX4; D6K E-328 NCALR	B. Govan	1	6/4	0730hrs	1930hrs		
Flex Trac; AX2; E-380 NCALR	J. Swain /	1	6/3	0730hrs	1930hrs		
7. Control Operations							
<ul style="list-style-type: none"> <li>Resources will provide initial attack for new fire starts on FWS District 1 (Alligator River, Pocosin Lakes, Pungo, Pea Island, Swan Quarter, Mattamuskeet NWR.</li> <li>Resources will be dispatched by FWS through DIVS E. Meekins.</li> <li>Equipment staged at Koehring Road and Long Curve Road</li> </ul>							
8. Special Instructions							
<ul style="list-style-type: none"> <li>Limit use of foam within 100' of any water surface.</li> <li><b>US 264 has re-opened to public traffic. Be Alert.</b></li> </ul>							
9. <i>Division/Group Communication Summary</i>							
Function	Frequency	System	Channel	Function	Frequency	System	Channel
Command		KING NIFC	<b>North 11 South 12</b>	Logistics		KING NIFC	
Tactical Div/Group		KING NIFC	<b>5</b>	Air to Ground		KING NIFC	<b>8</b>
Prepared by (Resource Unit Leader) Lisa Harrick		Approved by (Planning Section Chief) Laura Prevatte		Date 05/25/2011		Time 2130hrs	

<b>DIVISION ASSIGNMENT LIST</b>		1. Ops Chief Ned Brickhouse Derrick Moore (T) Planning OPS – Jeff Burns		2. Division/Group <b>Night Shift</b>			
3. Incident Name <b>PAINS BAY FIRE</b>		4. Operational Period Date: 5/26/2011 Time: 1930-0730 hrs					
5. Operations Personnel							
Division/Group Supervisor	Jonathan Ambrose LDW 5/28	Safety		Mike Kretzchmar, Tom White			
6. Resources Assigned this Period							
Strike Team/Task Force/ Resource Designator	Leader	Number Persons	Last Work Night	Drop Off PT./Time	Pick Up PT./Time		
Pump operator	R. Strickland	1	5/28	1930	0730		
7. Control Operations							
<ul style="list-style-type: none"> <li>• Monitor Pump Operations on Div D/E, C, and A/B.</li> <li>• US 264 has re-opened to public traffic. Be Alert.</li> </ul>							
8. Special Instructions							
<p>In case of an emergency utilize Dare County VFD radio (800 mhz) to contact County EOC</p> <p>-Work in pairs.          -Provide adequate lighting prior to shutting down of pumps for servicing. Stay away from canal banks.          -Watch for rattlesnakes and bears. Do not throw food on ground or in canal.          -Keep smoke exposure to a minimum but do not stage on Hwy 264.          Refer to <b>Safety Message</b> and <b>Medical Plan</b> for more detail.</p>							
9. Division/Group Communication Summary							
Function	Frequency	System	Channel	Function	Frequency	System	Channel
Command		KING NIFC	<b>North 11 South 12</b>	Initial Attack		KING NIFC	
Tactical Div/Group		KING NIFC	<b>1</b>	Air to Ground		KING NIFC	<b>8</b>
Prepared by (Resource Unit Leader) Lisa Hartrick	Approved by (Planning Section Chief) Laura Prevatte			Date 05/25/2011	Time 2130 hrs		

<b>DIVISION ASSIGNMENT LIST</b>		1. Ops Chief Ned Brickhouse Derrick Moore (T) Planning OPS- Jeff Burns		2. Division/Group <b>E,G,H,I,J,K,L</b>			
3. Incident Name <b>PAINS BAY FIRE</b>		4. Operational Period Date: 5/26/2011 Time: 0730-1930hrs					
5. Operations Personnel							
Division/Group Supervisor		Safety		Mike Kretzschmar, Tom White			
6. Resources Assigned this Period							
Strike Team/Task Force/ Resource Designator	Leader	Number Persons	Last Work Day	Drop Off PT./Time	Pick Up PT./Time		
Unstaffed							
7. Control Operations							
8. Special Instructions							
9. Division/Group Communication Summary							
Function	Frequency	System	Channel	Function	Frequency	System	Channel
Command		KING NIFC	<b>North 11 South 12</b>	Initial Attack		KING NIFC	<b>5</b>
Tactical Div/Group		KING NIFC		Air to Ground		KING NIFC	<b>8</b>
Prepared by (Resource Unit Leader) Lisa Hartrick		Approved by (Planning Section Chief) Laura Prevatte		Date 05/25/2011		Time 2130hrs	

AIR OPERATIONS SUMMARY		PREPARED BY: Sherry Tomlinson				PREPARED DATE/TIME: 5/25/2011 1700									
<b>1. INCIDENT NAME</b> Pains Bay Fire		<b>2. OPERATIONAL PERIOD DATE:</b> 5/26/2011				START TIME: 0800		END TIME: 2000		SUNRISE: 0550		SUNSET: 2009			
<b>3. REMARKS</b> (Safety Notes, Hazards, Air Operations Special Equipment, etc.) --BE ALERT FOR HIGH WINDS AND TURBULANCE --NOTE THAT SOME TOWERS ARE NOT MARKED ON SECTIONAL MAPS. TOWERS COULD BE UP TO 2500 FEET TALL --ALL FIREFIGHTING AIRCRAFT NEED TO SQUAWK 1255. FLY WITH LIGHTS ON. --HEADS UP WHEN PERFORMING WATER DROPS AROUND CREWS ON THE GROUND --MAINTAIN CLEAR COMMUNICATIONS <b>Safety Before Mission</b>  Navy Dare Range will be performing air operations in the key hole @ 4000' MSL beginning 5/19						<b>4. MEDEVAC A/C:</b> Dare County Med Flight		<b>5. TFR:</b> 1/2182 <b>A-22</b> 3100' MSL							
<b>6. PERSONNEL</b>		Phone		<b>7. FREQUENCIES</b>		AM		FM		<b>8. FIXED WING # Available/ Type/ Make-Model/FAA N# / Bases</b>					
AOBD: Sherry Tomlinson ASGS: Scott Plue		253-293-3523 208-661-6619		AIR/AIR PRIMARY AIR/AIR SECONDARY NATIONAL FLIGHT FOLLOWING (NARROW BAND) ATGS/LEAD/ASM TRANSITION-HANDOFF		123.125 122.425				Heavy Air Tankers Available Through SACC-678-320-3012  ALLIGATOR RIVER DISPATCH 252-473-1744 X 21 -Olive Jones A/C 252-473-1840 252-473-1721 Air Force Tower 252-473-2201 Navy Tower 252-473-2720  Engelhard loading crew: Troy Bryant 252-337-4629 Dave McIntyre  Engelhard Airstrip: N35 33.74' X W75 57.31' Edenton Airstrip: N36 01.72 X W76 34.19' Currituck Airstrip: N36 23.94' X W76 0.98'					
ATGS: Bill Palmer ATGS (t) : Donnie Harris ATGS: Rob Bickerstaffe		252-229-0421 252-475-8012 828-989-1314		AIR/AIR RW: SEE ABOVE											
HLCO: NONE				AIR/GROUND: Primary  AIR/GROUND: Secondary				Rx 171.575 N Tx 171.575 Tone 131.8 169.925N							
				COMMAND: (Simplex)						Leadplanes					
HEB1: Mike Maguire		828-775-1871		COMMAND RPT SEE ICS 205		Rx:		Tx:							
				DECK FREQ:				168.6125		ATGS Aircraft Location: MQI N11AR A-11 N135BA A-31					
				TOLC FREQ:											
DARE BOMBING RANGE				FOR ENTERING DARE BOMBING RANGE		122.900				Other: SEATS- Available in Kinston - 252-520-2402 Kinston Operations Duty Officer- John Willis Order through Alligator Dispatch					
<b>9. HELICOPTERS</b> (Use Additional Sheets As Necessary)															
FAA N#	TY	MAKE/MODEL	BASE	AVAIL	START	REMARKS	FAA N#	TY	MAKE/MODEL	BASE	AVAIL	START	REMARKS		
N161KA	A-26	1	K-Max	MQI	0800	0830	Chris Sotherland 509-668-1592	N2HX	A-25	3	Bell 407	Pains H.B	0830	0830	Persephone Thompson 989-305-1223
N905CH	A-39	1	Sikorsky S-61	MQI	0800	0830	Mark Carter 336-302-0342	N894HA	A-20	3	Bell 206	Pains H.B	0830	0830	Cory Waters 252-475-0102

<b>MEDICAL PLAN</b>	1. Incident Name Pains Bay Fire	2. Date Prepared 05/25/11	3. Time Prepared 1530	4. Operational Period 05/26/11 0730-1930	
<b>5. Incident Medical Aid Station</b>					
Medical Aid Stations	Location			Paramedics Yes No	
Dare County Parks and Recreation Bldg (0900-2030hrs)	410 Airport Road Manteo, NC			X	
Stumpy Point VFD (0730-0830hrs)	Stumpy Point			X	
Robert Wade EMT (0800 to 2000hrs)	Line EMT Staged Hwy 264 and Point Peter Rd			X	
<b>6. Transportation</b>					
<b>A. Ambulance Services</b>					
Name	Address	Phone	Paramedics Yes No		
Dare County EMS Station #8	6677 Hwy 64 Business, Mann Harbor, NC	Dare Central (911)	X		
Dare County Med Flight	1078 Driftwood Dr., Manteo, NC	911	X		
<b>B. Incident Ambulances</b>					
Name	Location			Paramedics Yes No	
<b>7. Hospitals</b>					
Name	Address	Travel Time Air Ground	Phone	Helipad Yes No	Burn Center Yes No
Outer Banks Hospital	Mile Post 14, 4800 S. Croatan Hwy Nags Head, NC Latitude: N 35° 56' 20.33" Longitude: W 75°45' 5.89"	15 30	(252) 449-4500	X	X
Sentara Norfolk General Hospital	Norfolk, VA	30 90	(757) 388-3000	X	X
<b>8. Medical Emergency Procedures</b>					
<p>Report all injuries and illnesses to the closest DIVS. DIVS will notify the Line EMT and ICP Communications, and include the extent of the injury and transportation needed. Do not use patient's name on the radio. A medical emergency should be declared over the radio immediately. All radio traffic will be kept to a minimum so emergency procedures can proceed uninhibited. ICP Communications will notify Dare Central Dispatch (911) and MEDL. Safety will be notified. Dare County EMS will respond and determine the appropriate treatment, transportation and facility needed. If ground transportation is determined, if possible, assign personnel to meet the ambulance at a location that is easily accessible to lead them to the site of the injured. If patient is transported to meet EMS personnel needs to remain with patient until EMS has arrived. EMT is staged at NCDFR Maintenance Building to respond to injuries and stabilize patient until EMS personnel arrives.</p> <p>For Non emergencies contact the Medical Unit Leader located at ICP. Transportation and treatment will be arranged by MEDL at ICP.</p> <p><b>Nighttime Operations:</b> Communicate all emergency medical needs directly to Dare County Emergency Communications via 800mhz radio furnished by NCDFR Dare County Ranger, and contact Safety Officers Mike Kretzschmar at 828-413-2588 or Tom White at 910-334-0029.</p>					
Prepared by (Medical Unit Leader) Randy Kearney, MEDL(T) / John Weaver, MEDL			10. Reviewed by (Safety Officer) Mike Kretzschmar / Tom White		



Incident Radio Communications Plan		1.Incident Name: Pains Bay		2. Date/Time Prepared: 05/25/11 1430 hrs		3. Operational Period (Date/Time) 5/26/11	
4. Basic Radio Channel Utilization							
System/Cache	Channel	Function	Frequency/Tone	Assignment	Remarks		
NC Forest Service	CH 1	TAC 1	RX 151.400WIDE TX 151.400W Tone 136.5	Water Handling Group			
NC Forest Service	CH 2	TAC 2	RX 151.460W TX 151.460W Tone 136.5	Div D, E,C,F			
NC Forest Service	CH 3	TAC 3	RX 151.310W TX 151.310W Tone 136.5	Structure Protection Div-M			
NIFC	CH 4	TAC 4	RX 168.050N TX 168.050 NARROW	DIVS A, B			
NIFC	CH 5	TAC 5	RX 168.200N TX 168.200N	Initial Attack ,Div- G Div-N	IA		
NIFC	CH 6	TAC 6	RX 168.600N TX 168.600N	DIV-H Div-O DIV-I			
NIFC	CH 8	US FWS AIR TO GROUND	RX 171.575N TX 171.575 Tone 131.8	Fire Line			
TFS	CH 9	TAC 9	168.350N	FIRE LINE TAC			
US FWS	CH 11	COLUMBIA CMD REPEATER 11	RX 172.675 N TX 168.500 N Tone 118.8	RAWS,CMD NORTH	North COMMUNICATION		
US FWS	CH 12	ENGLEHART CMD REPEATER 12	RX 164.625N TX 163.150 Tone 186.2		South COMMUNICATION		
US FWS	CH 13	TAC 13	TX/RX 162.2375N TONE 156.7				
AIR TO GROUND	CH 15	AIR TO GROUND Secondary	RX/TX 169.925				
AIR GUARD	CH 16	Air Guard	RX/TX 168.625 TX Tone 110.9	Emergency contact with Aircraft			
Communications		Comm Unit	828-230-9008	Sam Bodenhamer			
ICS 205	5. Prepared By (Communications Unit Leader): Sam Bodenhamer						

## PAINS BAY FIRE CONTACT LIST May 26, 2011

Name	Position	Phone
<b>COMMAND</b>		
Smith, Robert	ICT2	252-813-3721
Miller, Roger	PIO2	828-499-1911
Carlson, Chris	PIO2	919-632-0185
Suttles, Keith	LOFR	828-413-4441
Kretzschmar, Mike	SOF2	828-413-2588
White, Tom	SOF2	910-334-0029
Keith Jenkins	SOF2	828-989-8060

<b>FWS</b>		
Pate, Greg	NCDFR	252-560-5018
Byrant, Mike	Project Leader-NWRs	
		252-216-7505
Lanier, Scott	Deputy Proj Leader- NWRs	
		252-216-7506
Crews, Tom		252-475-4269
Reid, Dana	IBA	541-215-0420
Alligator River NWR		252-473-1131
Czernik, Helen	IBA(T)	252-475-8339
Strawser, Bonnie	PIO2	252-216-8667
Stewart, Dennis	USFWS	252-473-1131x231

<b>COOPERATORS</b>		
Price, RD	Chief, Stumpy Pt Fire Dept	
		252-216-7146
Price, Curtis	Dpty Chief, Stumpy Pt FD	
	cell	252-216-7094
	home	252-475-1040
Sanderson, Sandy	Emergency Mgmt Coord	
		252-473-8326
Shackelford, Rob	NCFS	252-216-5271
	home	252-216-8800
	office	252-473-2531
Patterson, Karen	IBA NCFS	919-218-2586
Christopher, Ed	NCFS	252-542-0119
Doughtie, Doug	Dare County Sheriff	
	252-473-3444	
Joe Lafferty	USAF	252-216-8751 cell
		252-473-1906 office
Lt. Cmdr. Marty Hill	US Navy	757-433-1336

<b>OPERATIONS</b>		
Brickhouse, Ned	OSC	252-542-0120
Moore, Derrick 5/25	OSC2(t)	252-717-8286
Burns, Jeff 5/25	OSC2	828-713-0201
Hinson, Mike 6/2	DIVS A,B	910-874-2621
Darden, Ricky 5/25	DIVS D,C,F	910-289-8819
Blake, Hagan T. 5/25	DIVS M	910-641-1441
Koenig, William "Jeff" 6/5	DIVS O	540-622-3507
Riggs, Greg 6/3	Structural Protect	252-229-1438
Ambrose, Jonathan 5/28	DIVS Night	910-512-5822

Name	Position	Phone
<b>AIR OPERATIONS</b>		
Tomlinson, Sherry	AOBD	253-293-3523
Plue, Scott	ASGS	208-661-6619
Perry, Jerry	RADO	252-331-3435

<b>PLANS</b>		
Prevatte, Laura	PSC2	910-470-7801
Pickens, Bill	PSC2	919-218-2802
Hartrick, Lisa	RESL	
Yeich, Brian	SCKN	910-309-8654
Hicks, Greg	SITL	919-545-4501
DeMay, Bill	FOBS	910-334-0032
Powell, Walter	GISS	252-229-0810
Jason Moan	GISS	919-280-7219
Ludlum, Scott	FBAN	252-903-8007
Curcio, Gary	FBAN	919-810-5623
Trickel, Rob	DMOB	919-604-5802

<b>FINANCE</b>		
Roach, Don	FSC2	919-218-4554
Tripp, Teresa	FSC2	
Hall, Renee	PROC	
Plummer, Mary	TIME	704-616-0747
Faustini, Louise	COST	
Baker, Susan	EQTR	252-796-7774
James, Tom	CTSP	919-218-9432

<b>LOGISTICS</b>		
Harris, Roger	LSC2	828-450-0013
Barrow, Neil	LSC2	252-560-6478
Raynor, Patrick	ORDM	336-239-2377
Fay, Susan	ORDM(t)	919-548-5837
Pittman, Kevin	SPUL	919-218-7732
Arney, Derek	RCDM	828-413-2541
Bodenhamer, Sam	COML	828-230-9008
Taylor, Frank	COMT	823-337-7998
Credle, Chuck	COMT	252-944-8464
Comer, Scotty	RADO	910-206-1260
Perry, Alton	FACL	919-218-5511
Hunter, Les	FDUL	919-218-3349
McPherson, Jeff	GSUL	252-312-4379
Bell, Gavin	EQPM	704-813-9127
Evans, Martin	EQPM	252-945-0607
Risen, Derick	EQPM	910-309-8677
Weaver, John	MEDL	720-771-6047
Kearney, Randy	MEDL(t)	919-727-0954
Jimmy Riner	SECM	270-703-0136

**ICP Fax  
ICP**

**NWR Dispatch**

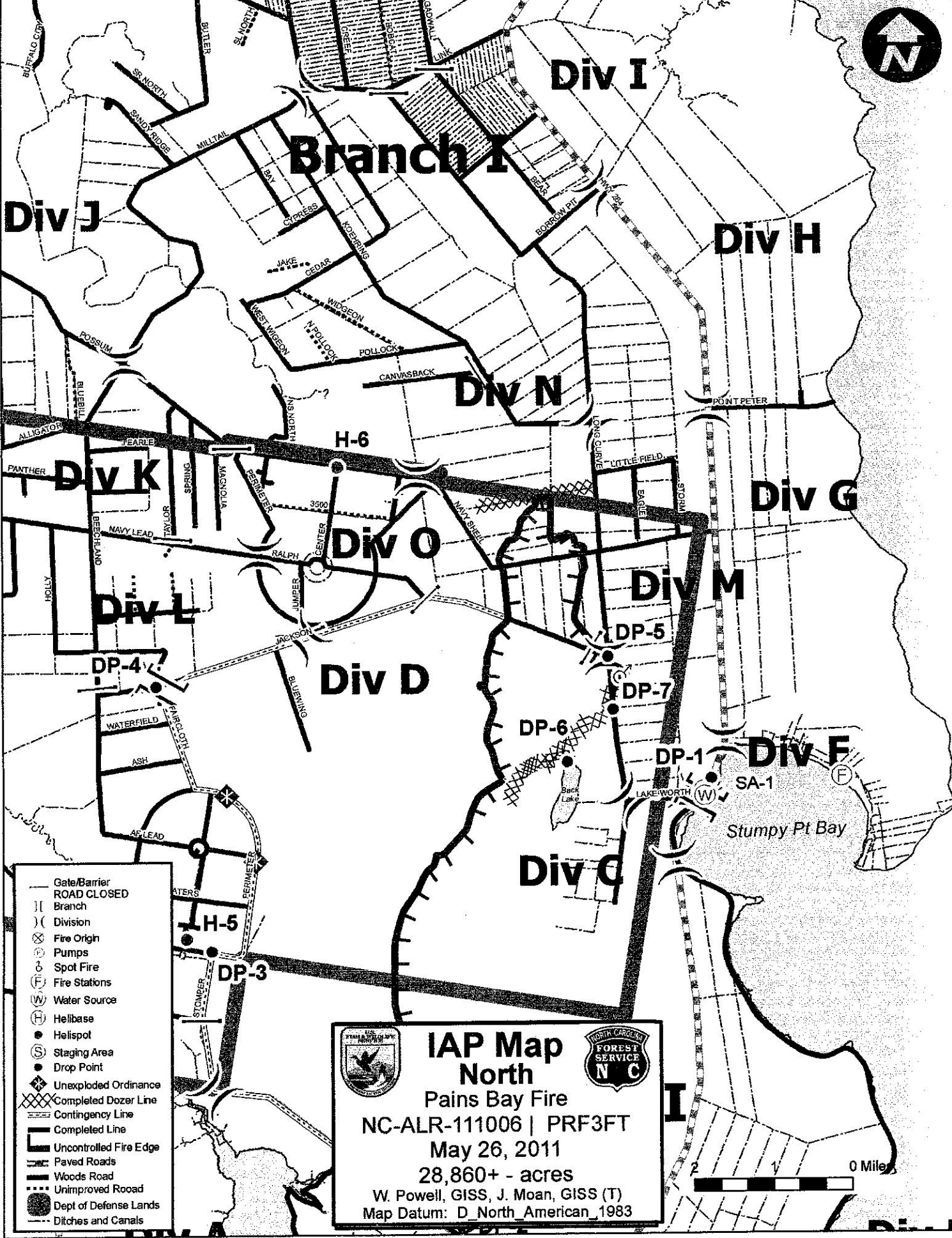
**252-473-1162  
252-473-1137**

**252-473-1744 x 21**

Fire Information

<http://www.facebook.com/?ref=home#!/pages/NC-Division-of-Forest-Resources/117366861613343>

<http://www.inciweb.org/incident/2218/>



- Gate/Barrier
- ROAD CLOSED
- || Branch
- ( ) Division
- ⊗ Fire Origin
- ⊙ Pumps
- ⊙ Spot Fire
- (F) Fire Stations
- (W) Water Source
- (H) Helibase
- Helispot
- (S) Staging Area
- Drop Point
- ◆ Unexploded Ordinance
- ⊗ Completed Dozer Line
- ⊘ Contingency Line
- Completed Line
- Uncontrolled Fire Edge
- Paved Roads
- Woods Road
- ⋯ Unimproved Road
- Dept of Defense Lands
- Ditches and Canals

## IAP Map North

Pains Bay Fire

NC-ALR-111006 | PRF3FT

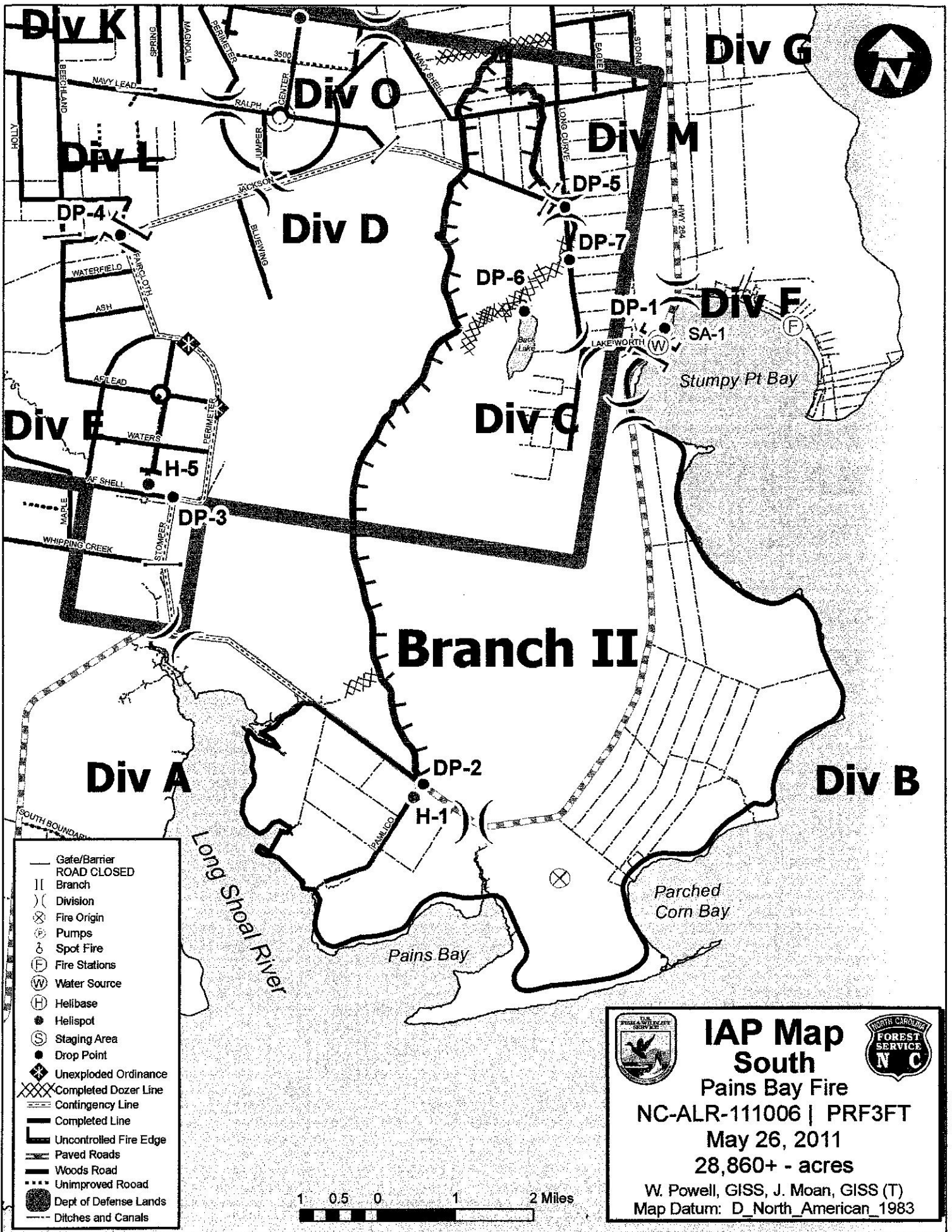
May 26, 2011

28,860+ - acres

W. Powell, GISS, J. Moan, GISS (T)


Map Datum: D\_North\_American\_1983





- Gate/Barrier
- ROAD CLOSED
- II Branch
- ( ) Division
- ⊗ Fire Origin
- ⊕ Pumps
- ⊗ Spot Fire
- ⊕ Fire Stations
- ⊕ Water Source
- ⊕ Helibase
- ⊕ Helispot
- ⊕ Staging Area
- ⊕ Drop Point
- ⊕ Unexploded Ordinance
- ⊕ Completed Dozer Line
- ⊕ Contingency Line
- ⊕ Completed Line
- ⊕ Uncontrolled Fire Edge
- ⊕ Paved Roads
- ⊕ Woods Road
- ⊕ Unimproved Road
- ⊕ Dept of Defense Lands
- ⊕ Ditches and Canals






## IAP Map South

**Pains Bay Fire**  
 NC-ALR-111006 | PRF3FT  
 May 26, 2011  
 28,860+ - acres

W. Powell, GISS, J. Moan, GISS (T)  
 Map Datum: D\_North\_American\_1983



**☐ WEATHER FORECAST – Thursday 5/26/2011**

.DISCUSSION...

HIGH PRESSURE WILL CONTINUE OFFSHORE THROUGH FRIDAY. THE HIGH WILL BUILD WEST AND OVER THE REGION LATER THIS WEEKEND THROUGH THE MIDDLE PART OF NEXT WEEK.

.THURSDAY...

SKY/WEATHER.....SUNNY.

MAX TEMPERATURE.....AROUND 90.

MIN HUMIDITY.....50 PERCENT.

20-FOOT WINDS.....SOUTHWEST WINDS 8 TO 12 MPH...BECOMING SOUTH 15 TO 20 MPH.

HAINES INDEX.....4 TO 5 OR OR LOW POTENTIAL FOR LARGE PLUME DOMINATED FIRE GROWTH TO OR MODERATE POTENTIAL FOR LARGE PLUME DOMINATED FIRE GROWTH.

MIXING HEIGHT.....1000 FT AGL...INCREASING TO 40000 FT AGL.

TRANSPORT WINDS.....SOUTH 14 TO 22 MPH...INCREASING TO AROUND 24 MPH LATE.

LVORI.....3.

TIME (EDT)	6AM	8AM	10AM	NOON	2PM	4PM	6PM	8PM	10PM	MIDNGT	2AM	4AM
SKY (%)	27	25	24	24	23	22	20	18	21	23	26	29
WEATHER COV.												
WEATHER TYPE	NONE	NONE	NONE	NONE	NONE	NONE	NONE	NONE	NONE	NONE	NONE	NONE
TEMP	72	76	82	87	89	88	86	81	78	75	73	72
RH	90	79	63	53	50	54	59	69	79	84	90	90
20 FT WIND (MPH)	SW 8	SW 8	SW 9	S 10	S 11	S 14	S 14	S 14	S 14	SW 11	SW 10	SW 8
20 FT WIND GUST	10	15	15	15	15	20	20	20	20	15	15	15
LVORI	7	4	2	1	1	1	1	3	3	4	5	6
HAINES INDEX	4	4	4	4	5	5	5	5	5	5	5	5

**☐ FIRE BEHAVIOR- Thursday 5/26/2011**

Scott Ludlum – FBAN 252-903-8007

**Previous Fire Behavior-** The fire moved very little to none. Rainfall amounts on Division Alpha measured 0.4”, 0.3” on Delta and 0.2” on November. Smoldering and creeping was observed on the northern areas of the fire.

**Predicted Fire Behavior-** Divisions Delta and Oscar will be a large concern with the increase in forecasted winds today. These divisions will be on the windward side thus receiving significant pressure for potential escape. Division November will also be a concern. The head of the fire stopped at the fuel break and SW winds will tend to funnel down this corridor. Watch for torching that could loft embers across control lines. During peak wind gust expect torching and rapid rates of spread, especially after the fire grows much larger than an acre. Be aware of the local sea breeze influence and thunderstorm outflows, this will increase rates of spread and can change the fire direction very suddenly.

**Fuels/Fuel Model-** Pocosin (Tall Brush) - FM sh9

Rates of Spread-	Flame Lengths-	Probability of Ignition-	Spotting-
48 ch/hr <i>10 ch. higher (24 hr trend)</i>	18 ft. <i>2 ft. higher (24 hr trend)</i>	51% <i>1% higher (24 hr trend)</i>	0.2 Miles <i>No Change (24 hr trend)</i>

**Fuel Moisture-** (\* indicates new maximum indices may be set for this day)

1 HR (1/4" or less)	10 HR (1/4"-1")	100 HR (1-3")	1000 HR (3-8")	Live Woody
7% <i>2% lower (24 hr trend)</i>	11% <i>1% lower (24 hr trend)</i>	15% <i>1% lower (24 hr trend)</i>	18% <i>No Change (24 hr trend)</i>	70% <i>No Change (24 hr trend)</i>

**Predicted Fire Danger Readings- FM G- Dare Bomb Range** (\* indicates new maximum indices may be set for this day)

Ignition Component	Spread Component	Energy Release Component	Burning Index	KBDI
26 <i>1 lower (24 hr trend)</i>	12 <i>1 higher (24 hr trend)</i>	33 <i>3 higher (24 hr trend)</i>	43 <i>No Change (24 hr trend)</i>	*486 <i>12 higher (24 hr trend)</i>

**Controllability-** Indirect attack should be used if fires become established. Use of aircraft should always be utilized. Safety of firefighters is of a critical concern.

# SAFETY MESSAGE

TAILGATE BRIEFING SHEET

DATE: 5/26/11

Signature/Date

## Communication Responsibilities

All firefighters have five communications responsibilities :

Brief others as needed

Debrief your actions

Communicate hazards to others

Acknowledge messages

Ask if you don't know

In addition, all leaders must provide complete briefings that include a clearly stated "Leader's Intent".

Task = What is to be done

Purpose = Why it is to be done

End State = How it should look when done

---

### Mitigating Transition

**Transition is a red flag event.**

**Accidents often increase at this time.**

**Effective communications is imperative.**

**Brief others, as needed.**

**Debrief your actions.**

**Communicate hazards to others.**

**Acknowledge messages.**

**Ask, if you don't know.**

---

**SAFETY OFFICERS:** Mike Kretzschmar, Tom White

**LINE SAFETY OFFICERS:** Keith Jenkins,

<b>UNIT LOG</b>		1. Incident Name	2. Date Prepared	3. Time Prepared
4. Unit Name/Designators		5. Unit Leader (Name and Position)		6. Operational Period
<b>7. Personnel Roster Assigned</b>				
<b>Name</b>		<b>ICS Position</b>		<b>Home Base</b>
<b>8. Activity Log</b>				
<b>Time</b>		<b>Major Events</b>		
9. Prepared by (Name and Position)				