

# PAINS BAY FIRE

NC-ALR-111006  
PRF3FT (1502)



**M**aintain Control of Your Forces at  
All Times.

## Incident Action Plan

*Friday*

May 27, 2011  
0730-1930 hrs



<b>INCIDENT OBJECTIVES</b>	<b>1. Incident Name</b> <b>PAINS BAY FIRE</b>	<b>2. Date Prepared</b> <b>5/26/2011</b>	<b>3. Time Prepared</b> <b>2130 hrs</b>
<b>4. Operational Period</b>  <b>Thursday, May 27, 2011 0730 to 1930 hrs</b>			
<b>5. Incident Objectives</b>  <b>Control Objectives</b> <ol style="list-style-type: none"> <li>1. Provide for the safety of firefighters and general public by adherence to the 10 standard fire orders, 18 watch-out situations, in addition to maintaining direct and clear communications with all incident personnel and the general public.</li> <li>2. Keep fire contained west of US Highway 264, south of US Highway 64 and east of Milltail Creek.</li> <li>3. Coordinate with Dare Emergency Mangement Coordinator to initiate evacuation if fire threatens the village of Stumpy Point.</li> <li>4. Initiate the safe opening of US Hwy 264. Maintain 24 hours LE presence at designated areas to provide for immediate closure, if needed for escaped fire.</li> <li>5. Make appropriate notifications to NCDOT and EM, NC State Highway Patrol, USFWS and D13 operations for predicted "superfog" or dense smoke events.</li> <li>6. Continue soil saturation and mopup activities to extinguish ground fire.</li> <li>7. Ensure that suppression &amp; containment strategies on FWS property follow minimum impact suppression tactics. Escalation of tactics should consider amount of progress being made with current tactics, and the likelihood of those tactics being successful.</li> </ol> <b>Management Objectives</b> <ol style="list-style-type: none"> <li>1. Keep general public &amp; local officals in affected counties, as well as incident stake holders informed of fire status through situation updates and personal contacts at least every other day.</li> <li>2. Provide for accurate cost tracking and documentation of incident in accordance with IBH (Incident Business Handbook) procedures.</li> <li>3. Emphasize cost containment through continual assessment of personnel and resource needs to provide (right-sizing) of incident.</li> <li>4. Provide for safe, effective Transfer of Command to incoming Hildreth IMT.</li> </ol>			
<b>6. Weather Forecast For Period</b>  <b>See Attached Tailgate Safety Briefing Sheet.</b>			
<b>7. General Safety Message</b>  <b>See Attached Tailgate Safety Briefing Sheet.</b>			
<b>8. Attachments (mark if attached)</b>			
<ul style="list-style-type: none"> <li>✓ Organizational List – ICS 203</li> <li>✓ Div. Assignment Lists - ICS 204</li> <li>✓ Air Operations Summary- ICS 220</li> <li>✓ Communications Plan - ICS 205</li> <li>✓ Medical Plan - ICS 206</li> </ul>		<ul style="list-style-type: none"> <li>✓ Contact List</li> <li>✓ Incident Map</li> <li>✓ Tailgate Safety Briefing Sheet</li> <li>✓ Unit Log - ICS 214</li> </ul>	
<b>9. Prepared by (Planning Section Chief)</b>		<b>10. Approved by (Incident Commander)</b>	

**ORGANIZATION ASSIGNMENT LIST**

<b>1. Incident Name:</b> Pains Bay Fire	<b>Incident Number:</b> NC-ALR-111006
<b>2. Date &amp; Time Prepared:</b> 05/26/2011 2000 hr	<b>4. Operational Period:</b> 05/27/11 0730-1930 hr

<b>5. Incident Commander and Staff</b>		<b>9. Finance Section</b>	
ICT2	Reid Hildreth (6/4)	FSC2	Dave Andres (6/4)
ICT2 (t)	John Howard (6/4)	COST	Ron Myers (6/4)
SOF2	Andy Meadows (6/4)	TIME	Tracy Lawrence (6/4)
SOF2	Don Kuykendall (6/4)	CTSP	Craig Clarke (6/4)
SOF2	Keith Jenkins (6/4)	PROC	Richard Chellberg (6/4)
PIO2	Diane Steltz (6/4)	EQTR (t)	Jennifer Kinghorn (6/4)
PIO2 (t)	Susan Heisey (6/8)	EQTR	Susan Baker (6/4)
LOFR	Curtis Price (6/5)	IBA2	Dana Reid (6/2)
LOFR	Keith Suttles(5/30)	IBA2	Helen Czernik (6/5)
<b>6a. Agency Administrators</b>		<b>10a. Operations Section</b>	
FWS	Mike Bryant/ Scott Lanier	OSC2 - Planning	Michael Hardison (6/5)
NCDFR	Greg Pate	OSC2 - Planning	Marshall Humphries (6/5)
<b>6b. Agency Representatives</b>		OSC2	Lee Burwell (6/5)
NCDFR	Ed Christopher	DIVS - Water Handling	Miller Caison (6/3)
FWS	Bonnie Strawser	DIVS - Night Shift	Jonathan Ambrose (5/28)
FWS	Tom Crews	<b>10b. Branch 1</b>	
Dare EM	Sandy Sanderson	OPBD	Ferrell Banks (6/5)
Stumpy Pt. FD	Curtis Price	DIVS - M	Robert Lathrop (6/4)
US Navy	Lt. Cmdr. Marty Hill	DIVS - N	Mike Winslow (6/3)
US Airforce	Joe Lafferty	DIVS - O	Jeff Koenig(6/5)
<b>7. Planning Section</b>		DIVS - IA	Don Little (6/3), Scott Gibby (6/4)
PSC2	Don Watson (6/4)	<b>10c. Branch 2</b>	
PSC2	Dennis Register (6/4)	OPBD	Kim Soper (6/9), Brickhouse
RESL	Hans Rohr (6/4)	DIVS - A,B	Mike Hinson (6/2)
RESL (t)	Chris Liv (6/4)	DIVS - C,D,F	Brian Elam (6/4)
SITL	Mark Bost (6/4)	DIVS - Structure	Greg Riggs (6/3)
FOBS	Mike Petruncio (6/4)	<b>10d. Air Operations Branch</b>	
DMOB	Ronald Rockis (6/8)	AOBD (t)	Greg Yates (6/4)
GISS	Richard Cockerham (6/4)	AOBD	Sherry Tomlinson (5/29)
GISS (t)	Alan Moore (6/4)	ASGS	Scott Plue (5/29)
FBAN	Lloyd Brown (6/8)	HEB1	Mike Mcguire (6/8)
DOCL	Jim Slye (6/4)		
<b>8. Logistics Section</b>			
LSC2	Troy Cleland (6/4)		
SUPL	Ned Berg (6/4)		
RCDM	Jamie Logan (6/4)		
GSUL	Jerol Berry (6/4)		
COML	Paige Tart (6/4)		
COMT	Bill Collins (6/4)		
COMT	Charles Credle (6/4)		
RADO	Chris Sharpton (6/4)		
RADO	Jerry Perry (5/29)		
RADO	Scotty Comer (5/29)		
FACL	Jim Aldridge (6/4)		
SECM	Jimmy Riner (6/4)		
FUDL	Chris Hubacker (6/4)		
MEDL (t)	Jimmy Halliburton (6/4)		
MEDL	John Weaver (5/28)		
ORDM	Travis Shidal (6/4)		
EQPM	Martin Evans (6/7)		
EQPM	Michael Huggins (6/4)		

<b>DIVISION ASSIGNMENT LIST</b>		1. Branch <b>Branch I</b>		2. Division/Group <b>M</b>			
3. Incident Name <b>PAINS BAY FIRE</b>		4. Operational Period Date: 5/27/2011 Time: 0730-1930hrs					
5. Operations Personnel							
Operations Section Chief	Lee Burwell, (6/4) Marshall Humphries (T) (6/4) Mike Hardison (6/4)		Division/Group Supervisor	Kerry Lathrop (6/4)			
Branch Director	Ferrell Banks (6/4)		Safety	Andy Meadows (6/4) Don Kuykendall (6/4)			
6. Resources Assigned this Period							
Strike Team/Task Force/ Resource Designator	Leader	Number Persons	Last Work Day	Drop Off PT./Time	Pick Up PT./Time		
T6 ENG; E-9; VA-SHP	J. Jarrells / D. Good / A. Williams	3	6/5	0730hrs	1930hrs		
WAT3; E-309; 7E1 NCFS							
ES6 ; NCS#5 ; E-389 STEN	J. Tate	1	6/3	0730hrs	1930hrs		
ENG6 6-63	B. Canady / R. Freeman	2	6/3	0730hrs	1930hrs		
ENG6 6-32	T. Steves / J. Turnage	2	6/3	0730hrs	1930hrs		
ENG6 6-40	B. Morgan / A. Cagle	2	6/3	0730hrs	1930hrs		
ENG 6 2-41	A.Farmer / J. Keener	2	6/3	0730hrs	1930hrs		
ENG6 2-31	D. Wahlers / D.S. Mitchell	2	6/3	0730hrs	1930hrs		
T2DOZ; E-228; 13X62 DBR	Terrell	1		0730hrs			
7. Control Operations							
<ul style="list-style-type: none"> <li>• <b>Prep for burn out and hold Long Curve Road.</b></li> <li>• <b>Burn out pocket if conditions warrant.</b></li> <li>• <b>Identify critical areas and special needs</b></li> <li>• <b>T6 Engines begin pump operation for mop up</b></li> </ul>							
8. Special Instructions							
<ul style="list-style-type: none"> <li>• <b>Identify escape routes if Long Curve Road is compromised.</b></li> <li>• <b>Limit use of foam within 300 ft of any water source.</b></li> <li>• <b>US 264 has re-opened to public traffic. Be Alert.</b></li> </ul>							
9. Division/Group Communication Summary							
Function	Frequency	System	Channel	Function	Frequency	System	Channel
Command		KING NIFC	<b>North 11 South 12</b>	Initial Attack		KING NIFC	<b>5</b>
Tactical Div/Group		KING NIFC	<b>3</b>	Air to Ground		KING NIFC	<b>8</b>
Prepared by (Resource Unit Leader) Hans-Christian Rohr, Chris Liv (T)		Approved by (Planning Section Chief) Don Watson		Date 05/26/2011		Time 2130 hrs	

<b>DIVISION ASSIGNMENT LIST</b>		1. Branch <b>Branch I</b>		2. Division/Group <b>N</b>			
3. Incident Name <b>PAINS BAY FIRE</b>		4. Operational Period Date: 5/27/2011 Time: 0730-1930hrs					
5. Operations Personnel							
Operations Section Chief	Lee Burwell (6/4) Marshall Humphries (t) (6/4) Mike Hardison (6/4)	Division/Group Supervisor		Mike Winslow (6/4)			
Branch Director	Ferrell Banks (6/4)	Safety		Andy Meadows (6/4) Don Kuykendall (6/4)			
6. Resources Assigned this Period							
Strike Team/Task Force/ Resource Designator	Leader	Number Persons	Last Work Day	Drop Off PT./Time	Pick Up PT./Time		
TFLD	Jon Albertson O-193	1	6/2	0730 hrs	1930 hrs		
T6 ENG; E-6; VA-VAF	C. Ramey, Meadows, Christopher	3	6/7	0730 hrs	1930 hrs		
T6 ENG; E-8; VA-VAF	G. Norris, Sutherland, Paulette	3	6/7	0730hrs	1930hrs		
WAT3; E-385; 13E1	R. Davis	1	---	0730hrs	1930hrs		
STDZ	A. Hux O-39	1	5/31	0730hrs	1930hrs		
T2DOZ 13X51		1		0730hrs	1930hrs		
T2DOZ 13X61		1		0730hrs	1930hrs		
TPS2 D-7 Strike Team E-457	Michael Hughes	1	6/5	0730hrs	1930hrs		
TPL2 7x21	James Pugh	2	6/5	0730hrs	1930hrs		
TPL2 7x41	Jason O'Neal	2	6/5	0730hrs	1930hrs		
TPS2 D-8 Strike Team E-458	Brian Council	1	6/5	0730hrs	1930hrs		
TPL2 8x2	Judson Sellers	2	6/5	0730hrs	1930hrs		
TPL2 8x43	Unnamed	2	6/5	0730hrs	1930hrs		
Marsh Master; E-222; DBR	unstaffed	0					
SOF2	Keith Jenkins O-186	1	6/4	0730hrs	1930hrs		
7. Control Operations							
<ul style="list-style-type: none"> <li>• <b>Complete Direct Attack.</b></li> <li>• <b>Control line North of Navy Shell.</b></li> <li>• <b>Prep area for burn out from DIV N/M break west along fuel break to Navy Shell Rd.</b></li> <li>• <b>Identify critical areas and special needs.</b></li> <li>• <b>Launch Bridge as needed</b></li> <li>• <b>T6 Engines begin pump operation for mop up.</b></li> </ul>							
8. Special Instructions							
<ul style="list-style-type: none"> <li>• <b>Limit use of foam within 300 ft of any water source.</b></li> <li>• <b>Identify escape routes and safety zones.</b></li> <li>• <b>US 264 has re-opened to public traffic. Be Alert.</b></li> </ul>							
9. Division/Group Communication Summary							
Function	Frequency	System	Channel	Function	Frequency	System	Channel
Command		KING NIFC	<b>North 11 South 12</b>	Initial Attack		KING NIFC	<b>5</b>
Tactical Div/Group		KING NIFC	<b>5</b>	Air to Ground		KING NIFC	<b>8</b>
Prepared by (Resource Unit Leader) Hans-Christian Rohr, Chris Liv		Approved by (Planning Section Chief) Don Watson		Date 05/26/2011		Time 2130 hrs	

<b>DIVISION ASSIGNMENT LIST</b>			1. Branch <b>Branch I</b>		2. Division/Group <b>O</b>		
3. Incident Name <b>PAINS BAY FIRE</b>			4. Operational Period Date: 5/27/2011 Time: 0730-1930hrs				
5. Operations Personnel							
Operations Section Chief		Lee Burwell (6/4) Marshall Humphries (t) (6/4) Mike Hardison (6/4)		Division/Group Supervisor		Jeff Koenig (6/5)	
Branch Director		Ferrell Banks (6/4)		Safety		Andy Meadows (6/4) Don Kuykendall (6/4)	
6. Resources Assigned this Period							
Strike Team/Task Force/ Resource Designator		Leader		Number Persons	Last Work Day	Drop Off PT./Time	Pick Up PT./Time
STEN		D. Poole O-192		1	6/2	0730hrs	1930hrs
ENG6; E-13; SC-FMF		Ray / Wyman / Rister		3	6/2	0730 hrs	1930 hrs
ENG6; E-14; IL-SHF		Paukert / Hancock / Walker		3	6/2	0730hrs	1930hrs
WAT3; E-310; 4E1 NCFS		J. Drake		1	5/26	0730hrs	1930hrs
ES6 NCNCS #6		F. Harris		1	6/3	0730hrs	1930hrs
ENG6 5-20		K. Bunting / E. Matherly		2	6/3	0730hrs	1930hrs
ENG6 5-70		R. Black / L. Whicker		2	6/3	0730hrs	1930hrs
ENG6 5-50		J. Short / J. Cumbo		2	6/3	0730hrs	1930hrs
ENG6 8-31		K. Powell / J. Cook		2	6/3	0730hrs	1930hrs
ENG6 FWS		J. Tripp / Wyatt		2	6/2	0730hrs	1930hrs
Safety Officer		Don Kuykendall		1	6/4	0730hrs	1930hrs
7. Control Operations							
<ul style="list-style-type: none"> <li>• <b>T6 Engines begin pump operations for mop up between Jackson Road and Navy Shell Road.</b></li> <li>• <b>Assist water group as needed.</b></li> <li>• <b>Coordinated resources with Div N and Div D as needed.</b></li> </ul>							
8. Special Instructions							
<ul style="list-style-type: none"> <li>• <b>Limit use of foam within 300 ft of any water source.</b></li> <li>• <b>Establish contact with Liaison for Navy Range see Keith Suttles.</b></li> <li>• <b>US 264 has re-opened to public traffic. Be Alert.</b></li> </ul>							
9. Division/Group Communication Summary							
Function	Frequency	System	Channel	Function	Frequency	System	Channel
Command		KING NIFC	<b>North 11 South 12</b>	Initial Attack		KING NIFC	<b>5</b>
Tactical Div/Group		KING NIFC	<b>6</b>	Air to Ground		KING NIFC	<b>8</b>
Prepared by (Resource Unit Leader) Hans Rohr, Chris Liv (T)		Approved by (Planning Section Chief) Don Watson			Date 05/26/2011		Time 2130 hrs

<b>DIVISION ASSIGNMENT LIST</b>		1. Branch <b>Branch I</b>		2. Division/Group <b>Initial Attack Group</b>			
3. Incident Name <b>PAINS BAY FIRE</b>		4. Operational Period Date: 5/27/2011 Time: 0730-1930hrs					
5. Operations Personnel							
Operations Section Chief	Lee Burwell, (6/4) Marshall Humphries (T) (6/4) Mike Hardison (6/4)		Division/Group Supervisor	Scott Gibby (6/4) Don Little (6/3)			
Branch Director	Ferrell Banks (6/4)		Safety	Andy Meadows (6/4) Don Kuykendall (6/4)			
6. Resources Assigned this Period							
Strike Team/Task Force/ Resource Designator	Leader	Number Persons	Last Work Day	Drop Off PT./Time	Pick Up PT./Time		
ICT4	R. Shackelford O-38	1	5/28	0730hrs	1930hrs		
T6 ENG; E200; PLE2	A. Davis O-144 M. Howle O-35	2	6/3	0730hrs	1930hrs		
WAT3; E-379 NC	unstaffed	0		0730hrs	1930hrs		
TPL2; AX4; D6K E-328 NCALR	B. Govan	1	6/4	0730hrs	1930hrs		
Flex Trac; AX2; E-380 NCALR	J. Powers (O-34) E. Spruill (O-88)	2		0730hrs	1930hrs		
7. Control Operations							
<ul style="list-style-type: none"> <li>Resources will provide initial attack for new fire starts on FWS District 1 (Alligator River, Pocosin Lakes, Pungo, Pea Island, Swan Quarter, Mattamuskeet NWR.</li> <li>Resources will be dispatched by FWS through DIVS E. Meekins.</li> <li>Equipment staged at Koehring Road and Long Curve Road</li> </ul>							
8. Special Instructions							
<ul style="list-style-type: none"> <li>Limit use of foam within 100' of any water surface.</li> <li><b>US 264 has re-opened to public traffic. Be Alert.</b></li> </ul>							
9. Division/Group Communication Summary							
Function	Frequency	System	Channel	Function	Frequency	System	Channel
Command		KING NIFC	<b>North 11 South 12</b>	Logistics		KING NIFC	
Tactical Div/Group		KING NIFC	<b>5</b>	Air to Ground		KING NIFC	<b>8</b>
Prepared by (Resource Unit Leader) Hans-Christian Rohr, Chris Liv (T)		Approved by (Planning Section Chief) Don Watson		Date 05/26/2011		Time 2130hrs	





<b>DIVISION ASSIGNMENT LIST</b>			1. Branch <b>Branch II</b>		2. Division/Group <b>Division C, D, F</b>		
3. Incident Name <b>PAINS BAY FIRE</b>			4. Operational Period Date: 5/27/2011 Time: 0730-1930hrs				
5. Operations Personnel							
Operations Section Chief		Lee Burwell, (6/4) Marshall Humphries (T) (6/4) Mike Hardison (6/4)		Division/Group Supervisor		Brian Elam (6/4)	
Branch Director		Kim Soper (6/9) Ned Brickhouse (6/4)		Safety		Andy Meadows (6/4) Don Kuykendall (6/4)	
6. Resources Assigned this Period							
Strike Team/Task Force/ Resource Designator		Leader		Number Persons	Last Work Day	Drop Off PT./Time	Pick Up PT./Time
THSP		M. Gibbs O-41		1	6/3	0730hrs	1930hrs
ES6; E-388; NCS#4 STEN		J. Marlowe		1	6/3	0730hrs	1930hrs
ENG6		L. Thompson/ H. Marks		2	6/3	0730hrs	1930hrs
ENG6		J. Cranfill/ R. Gore		2	6/3	0730hrs	1930hrs
ENG6		W. Loudermelt/ K. Robinson		2	6/3	0730hrs	1930hrs
ENG6		J. Land/ P. Story		2	6/3	0730hrs	1930hrs
ENG6		D. Vigil/ C. Choplin		2	6/3	0730hrs	1930hrs
STDZ		S. Sheets O-189		1	5/31	0730hrs	1930hrs
Flex Trac; E-329; AX6 FWS		unstaffed		0	---	0730hrs	1930hrs
Flex Trac; E-33; 13x2		C. Gibbs O-102 / A. Harris O-100		2	6/4 & 6/5	0730hrs	1930hrs
Flex Trac; 13x64; E-264 DBR		R. Page / P. Meekins		2	6/7 & 5/30	0730hrs	1930hrs
Flex Trac; 13x66; E-222 DBR		A.Mann / Whitney		2	6/6 & 6/6	0730hrs	1930hrs
Flex Trac; 13x68; E-221 DBR		T. Harrell		1	6/10	0730hrs	1930hrs
TFLD		B. Miller E-9.4/J. Weaver (T)O-150.42		2	5/31 & 5/28	0730hrs	1930hrs
Flex Trac; E-313; DX7		L. "Mel" Guthrie O-167		1	5/27	0730hrs	1930hrs
Flex Trac PX5		W. Lowe O-195		1	6/5	0730hrs	1930hrs
7. Control Operations							
<ul style="list-style-type: none"> <li>Continue direct line operation south of Jackson Road.</li> <li>Continue to hold and irrigate around spots on Long Curve Road</li> <li>Identify critical areas and special needs for contingency burnout operations on Foxtrot.</li> <li>Patrol Lake Worth Road.</li> <li>Secure DBR shop and 2 structures west of Hwy 264, if fire establishes itself east of Long Curve Road</li> </ul>							
8. Special Instructions							
<ul style="list-style-type: none"> <li>Limit use of foam within 300 ft of any water source.</li> <li>US 264 has re-opened to public traffic. Be Alert.</li> </ul>							
9. Division/Group Communication Summary							
Function	Frequency	System	Channel	Function	Frequency	System	Channel
Command south		KING NIFC	North 11 South 12	Initial Attack		KING NIFC	5
Tactical Div/Group		KING NIFC	2	Air to Ground		KING NIFC	8
Prepared by (Resource Unit Leader) Hans-Christian Rohr, Chris Liv (T)		Approved by (Planning Section Chief) Don Watson			Date 05/26/2011		Time 2130 hrs

DIVISION ASSIGNMENT LIST		1. Ops Chief <b>Branch II</b>		2. Division/Group <b>Structure Protection Group</b>			
Operations Section Chief	Lee Burwell (6/4) Marshall Humphries (t) (6/4) Mike Hardison (6/4)	Division/Group Supervisor		Greg Riggs (6/3)			
Branch Director	Kim Soper (6/4) Ned Brickhouse (6/4)	Safety		Andy Meadows (6/4) Don Kuykendall (6/4)			
3. Incident Name <b>PAINS BAY FIRE</b>		4. Operational Period Date: 5/27/2011                      Time: 0730-1930hrs					
6. Resources Assigned this Period							
Strike Team/Task Force/ Resource Designator	Leader	Number Persons	Last Work Day	Drop Off PT./Time	Pick Up PT./Time		
ICT4 / LIASON	R. Shackelford	1	5/28	07300hrs	1930hrs		
ENG; Stumpy VFD	on station	4		07300hrs	1930hrs		
ENG; Manns Harbor VFD*	on station	5		07300hrs	1930hrs		
ENG; Roanoke Island VFD*	on station	4		07300hrs	1930hrs		
Dare County VFD Resources	on station			0730hrs	1930hrs		
7. Control Operations							
<ul style="list-style-type: none"> <li>• Available to execute Stumpy Point Evacuation Plan if identified trigger points are met.</li> <li>• Triage and prep structures for burnout operations in Stumpy Point community.</li> <li>• US 264 has re-opened to public traffic. Be Alert.</li> </ul>							
8. Special Instructions							
<ul style="list-style-type: none"> <li>• Mann's Harbor and Roanoke Island VFDs are call-when-needed.</li> <li>• Limit use of foam within 300 ft of any water source.</li> </ul>							
9. Division/Group Communication Summary							
Function	Frequency	System	Channel	Function	Frequency	System	Channel
Command		KING NIFC	<b>North 11 South 12</b>	Initial Attack		KING NIFC	<b>5</b>
Tactical Div/Group		KING NIFC	<b>3</b>	Air to Ground		KING NIFC	<b>8</b>
Prepared by (Resource Unit Leader) Hans-Christian Rohr, Chris Liv (T)		Approved by (Planning Section Chief) Don Watson			Date 05/26/2011		Time 2130hrs

<b>DIVISION ASSIGNMENT LIST</b>			1. Branch		2. Division/Group <b>WATER HANDLING</b>		
3. Incident Name <b>PAINS BAY FIRE</b>			4. Operational Period Date: 5/27/2011 Time: 0730-1930hrs				
5. Operations Personnel							
Operations Section Chief		Lee Burwell, (6/4) Marshall Humphries (T) (6/4) Mike Hardison (6/4)		Division/Group Supervisor		Miller Caison (6/3)	
Branch Director				Safety		Andy Meadow (6/4) Don Kuykendall (6/4)	
6. Resources Assigned this Period							
Strike Team/Task Force/ Resource Designator		Leader		Number Persons	Last Work Day	Drop Off PT./Time	Pick Up PT./Time
WHSP		W. Payne O-164		1	5/27& 5/31	0730hrs	1930hrs
Pump Operator		L. Wicker		1			
4 - Tractors with 16" Lift Pumps; NC-DFR		E-314, E-315, E-360, E-361 E-255, E-256, S-13, S-14		0			
2 – 18" Volume Lift Pumps		E-354, S-5150		0			
6 – 6" Water Pumps 3 – 2.5 " Pumps		E-338, E-339, E-5191, E-5192, S5151, S-5352		0			
Mop-up Truck; E-359 NCFS				0			
2 – Mop-up trailers NCFS		E-239, E-240		0			
Excavator ; PA00736; E-204; DBR		B. Grubbs		1			
Excavator; 200; E-249; ALR				0			
7. Control Operations							
8. Special Instructions							
<ul style="list-style-type: none"> <li><b>US 264 has re-opened to public traffic. Be Alert.</b></li> </ul>							
9. Division/Group Communication Summary							
Function	Frequency	System	Channel	Function	Frequency	System	Channel
Command		KING NIFC	<b>North 11 South 12</b>	Initial Attack		KING NIFC	<b>5</b>
Tactical Div/Group		KING NIFC	<b>1</b>	Air to Ground		KING NIFC	<b>8</b>
Prepared by (Resource Unit Leader) Hans-Christian Rohr, Chris Liv		Approved by (Planning Section Chief) Don Watson			Date 05/26/2011		Time 2130 hrs

<b>DIVISION ASSIGNMENT LIST</b>			1. Branch		<b>2. Division/Group</b>  <b>Night Shift</b>		
Operations Section Chief		Lee Burwell (6/4) Marshall Humphries (t) (6/4) Mike Hardison (6/4)		Division/Group Supervisor		Jonathan Ambrose (5/28)	
3. Incident Name <b>PAINS BAY FIRE</b>				4. Operational Period Date: 5/27/2011                      Time: 1930-0730 hrs			
5. Operations Personnel							
Division/Group Supervisor		Jonathan Ambrose 5/28		Safety		Andy Meadows (6/4) Don Kuykendall (6/4)	
6. Resources Assigned this Period							
Strike Team/Task Force/ Resource Designator		Leader		Number Persons	Last Work Night	Drop Off PT./Time	Pick Up PT./Time
Pump operator		R. Strickland		1	5/28	1930	0730
7. Control Operations							
<ul style="list-style-type: none"> <li>• <b>Monitor Pump Operations on Div D/E, C, and A/B.</b></li> <li>• <b>US 264 has re-opened to public traffic. Be Alert.</b></li> </ul>							
8. Special Instructions							
<p><b>In case of an emergency utilize Dare County VFD radio (800 mhz) to contact County EOC</b></p> <p>-Work together.          -Provide adequate lighting prior to shutting down of pumps for servicing. Stay away from canal banks.          -Watch for rattlesnakes and bears. Do not throw food on ground or in canal.          -Keep smoke exposure to a minimum but do not stage on Hwy 264.          Refer to <b>Safety Message</b> and <b>Medical Plan</b> for more detail.</p>							
9. Division/Group Communication Summary							
Function	Frequency	System	Channel	Function	Frequency	System	Channel
Command		KING NIFC	<b>North 11 South 12</b>	Initial Attack		KING NIFC	
Tactical Div/Group		KING NIFC	<b>1</b>	Air to Ground		KING NIFC	<b>8</b>
Prepared by (Resource Unit Leader) Hans-Christian Rohr, Chris Liv (T)		Approved by (Planning Section Chief) Don Watson		Date 05/26/2011		Time 2130 hrs	



Incident Radio Communications Plan				1. Incident Name: Pains Bay	2. Date/Time Prepared: 05/25/11 1430 hrs	3. Operational Period (Date/Time) 5/27/11
4. Basic Radio Channel Utilization						
System/Cache	Channel	Function	Frequency/Tone	Assignment	Remarks	
NC Forest Service	CH 1	TAC 1	RX 151.400WIDE TX 151.400W Tone 136.5	Water Handling Group		
NC Forest Service	CH 2	TAC 2	RX 151.460W TX 151.460W Tone 136.5	Div D, E,C,F		
NC Forest Service	CH 3	TAC 3	RX 151.310W TX 151.310W Tone 136.5	Structure Protection Div-M		
NIFC	CH 4	TAC 4	RX 168.050N TX 168.050 NARROW	DIVS A, B		
NIFC	CH 5	TAC 5	RX 168.200N TX 168.200N	Initial Attack, Div-G Div-N	IA	
NIFC	CH 6	TAC 6	RX 168.600N TX 168.600N	DIV-H Div-O DIV-I		
NIFC	CH 8	US FWS AIR TO GROUND	RX 171.575N TX 171.575 Tone 131.8	Fire Line		
TFS	CH 9	TAC 9	168.350N	FIRE LINE TAC		
US FWS	CH 11	COLUMBIA CMD REPEATER 11	RX 172.675 N TX 168.500 N Tone 118.8	RAWS,CMD NORTH	North COMMUNICATION	
US FWS	CH 12	ENGLEHART CMD REPEATER 12	RX 164.625N TX 163.150 Tone 186.2		South COMMUNICATION	
US FWS	CH 13	TAC 13	TX/RX 162.2375N TONE 156.7			
AIR TO GROUND	CH 15	AIR TO GROUND Secondary	RX/TX 169.925			
AIR GUARD	CH 16	Air Guard	RX/TX 168.625 TX Tone 110.9	Emergency contact with Aircraft		
Communications		Comm Unit	828-230-9008	Paige Tart		
ICS 205	5. Prepared By (Communications Unit Leader): Paige Tart					

<b>MEDICAL PLAN</b>	1. Incident Name	2. Date Prepared	3. Time Prepared	4. Operational Period					
	Pains Bay Fire	05/26/11	1530	Day/Night					
<b>5. Incident Medical Aid Station</b>									
Medical Aid Stations		Location			Paramedics				
					Yes No				
Dare County Parks and Recreation Bldg (0900-2030hrs)		410 Airport Road Manteo, NC							
Stumpy Point VFD (0730-0830hrs)		Stumpy Point							
Robert Wade EMT (0800-2000hrs) 804-387-6188		Line EMT Staged @ Navy Shell & Long Curve Rd							
<b>6. Transportation</b>									
<b>A. Ambulance Services</b>									
Name		Address		Phone		Paramedics			
						Yes No			
Dare County EMS Station #8		6677 Hwy 64 Business, Manns Harbor, NC		Dare Central (911)		X			
Dare County Med Flight		1078 Driftwood Dr., Manteo, NC		911		X			
<b>B. Incident Ambulances</b>									
Name		Location			Paramedics				
					Yes No				
<b>7. Hospitals</b>									
Name		Address		Travel Time		Helipad		Burn Center	
				Air Ground		Yes No		Yes No	
Outer Banks Hospital		Mile Post 14, 4800 S. Croatan Hwy Nags Head, NC Latitude: N 35° 56' 20.33" Longitude: W 75° 45' 5.89"		15 30		(252) 449-4500		X	
Sentara Norfolk General Hospital		Norfolk, VA <b>TRAUMA BURN CENTER</b>		30 90		(757) 388-3000		X	
<b>8. Medical Emergency Procedures</b>									
<p>Report all injuries and illnesses to the closest DIVS. DIVS will notify the Line EMT and ICP Communications, and include the extent of the injury and transportation needed. Do not use patient's name on the radio. A medical emergency should be declared over the radio immediately. All radio traffic will be kept to a minimum so emergency procedures can proceed uninhibited. ICP Communications will notify Dare Central Dispatch (911) and MEDL. Safety will be notified. Dare County EMS will respond and determine the appropriate treatment, transportation and facility needed. If ground transportation is determined, if possible, assign personnel to meet the ambulance at a location that is easily accessible to lead them to the site of the injured. If patient is transported to meet EMS personnel needs to remain with patient until EMS has arrived. EMT is staged at NCDNR Maintenance Building to respond to injuries and stabilize patient until EMS personnel arrives. For non emergencies contact the Medical Unit Leader located at ICP. Transportation and treatment will be arranged by MEDL at ICP.</p> <p><b>**FOR NON-LIFE THREATING EMERGENCIES**</b> Step 1. Patient - Will <u>Advise Their Supervisor</u> Step 2. Patient - Will <u>Receive Care</u> Step 3. Patient Supervisor/Patient - Will <u>Advise Division Supervisor</u> Step 4. Div. Sup/Patient Supervisor- Will <u>Document Incident On 214</u> Step 5. Div. Sup. /Patient's Supervisor - Will <u>Advise The Medical Unit Leader At The End Of Each Shift Of ANY</u> Illness or Injury And Of <u>ANY</u> Medical Care Given</p> <p><b>Nighttime Operations:</b> Communicate all emergency medical needs directly to Dare County Emergency Communications via 800mhz radio furnished by NCDNR Dare County Ranger, and contact Safety Officers Andy Meadows 252-229-0160 or Don Kuykendall 919-218-9505 and Jimmy Halliburton MEDL (T) 828-292-6503.</p> <p>ANY INJURY OR ILLNESS IN WHICH ANY TYPE OF CARE IS GIVEN WILL BE DOCUMENTED ON THE UNIT'S 214 AND THE MEDICAL UNIT LEADER WILL EITHER RECEIVE A COPY OF THE 214 OR BE ADVISED VERBALLY BY THE DIVISION SUPERVISOR, PATIENT'S SUPERVISOR OR PATIENT AT THE END OF EACH SHIFT.</p>									
Prepared by (Medical Unit Leader)					10. Reviewed by (Safety Officer)				
Jimmy Halliburton, MEDL(T) / John Weaver, MEDL					Andy Meadows SOF2				

AIR OPERATIONS SUMMARY		PREPARED BY: Sherry Tomlinson		PREPARED DATE/TIME: 5/26/2011 1700									
1. INCIDENT NAME		2. OPERATIONAL PERIOD DATE: 5/27/2011		START TIME: 0800 END TIME: 2000									
Pains Bay Fire		SUNRISE: 0650		SUNSET: 2010									
<b>3. REMARKS</b> (Safety Notes, Hazards, Air Operations Special Equipment, etc.) --BE ALERT FOR HIGH WINDS AND TURBULANCE --NOTE THAT SOME TOWERS ARE NOT MARKED ON SECTIONAL MAPS. TOWERS COULD BE UP TO 2500 FEET TALL --ALL FIREFIGHTING AIRCRAFT NEED TO SQUAWK 1255. FLY WITH LIGHTS ON. --HEADS UP WHEN PERFORMING WATER DROPS AROUND CREWS ON THE GROUND --MAINTAIN CLEAR COMMUNICATIONS		<b>4. MEDEVAC A/C:</b> Dare County Med Flight 1/2182 A-22 3100' MSL		<b>5. TFR:</b> 1/2182 A-22 3100' MSL									
<b>Safety Before Mission</b> Navy Dare Range will be performing air operations in the key hole @ 4000' MSL beginning 5/19													
6. PERSONNEL		7. FREQUENCIES		8. FIXED WING # Available/ Type/ Make-Model/FAA N# / Bases									
AOBD: Sherry Tomlinson		AIR/AIR PRIMARY		Heavy Air Tankers Available Through SACC-678-320-3012									
AOBD (T) Greg Yates		AIR/AIR SECONDARY		ALLIGATOR RIVER DISPATCH									
ASGS: Scott Plue		NATIONAL FLIGHT FOLLOWING (NARROW BAND)		252-473-1744 X 21									
		ATGS/LEAD/ASM TRANSITION-HANDOFF		-Olive Jones A/C									
ATGS: Bill Palmer		AIR/AIR RW: SEE ABOVE		252-473-1721									
ATGS (t) : Donnie Harris				252-473-2201									
ATGS: Rob Bickerstaffe				252-473-2720									
HLCO: NONE		AIR/GROUND: Primary		Engelhart loading crew: Troy Bryant 336-978-6556 Jonathan Queen									
		AIR/GROUND: Secondary		Engelhart Airstrip: N35 33.74' X W75 57.31' Edenton Airstrip: N36 01.72 X W76 34.19' Currituck Airstrip: N36 23.94' X W76 0.98'									
		COMMAND: (Simplex)		Leadplanes									
HEBT: Mike Maguire		COMMAND RPT SEE ICS 205		ATGS Aircraft Location: MQI									
		DECK FREQ:		N11AR A-11									
		TOLC FREQ:		N135BA A-31									
DARE BOMBING RANGE		FOR ENTERING DARE BOMBING RANGE		Other: SEATS- Available @ 1000, first dispatch from Kinston - 252-520-2402									
				Kinston Operations Duty Officer- John Willis									
				Order through Alligator Dispatch									
9. HELICOPTERS (Use Additional Sheets As Necessary)													
FAA N#	TY	MAKE/MODEL	BASE	AVAIL	START	REMARKS	FAA N#	TY	MAKE/MODEL	BASE	AVAIL	START	REMARKS
N161KA A-26	1	K-Max	MQI	0800	0830	Chris Sotherland 509-668-1592	N2HX A-25	3	Bell 407	Pains H.B	0830	0830	Persephone Thompson 989-305-1223
N905CH A-39	1	Sikorsky S-61	MQI	0800	0830	Mark Carter 336-302-0342	N894HA A-20	3	Bell 206	Pains H.B	0830	0830	Tom Kennedy 912-308-6036



**☐ WEATHER FORECAST – Friday 5/27/2011**

.DISCUSSION...

HIGH PRESSURE CENTERED OFFSHORE WILL EXTEND WEST ACROSS THE REGION THROUGH EARLY NEXT WEEK. A COLD FRONT WILL APPROACH FROM THE NORTHWEST WEDNESDAY AND CROSS THE AREA THURSDAY.

SKY/WEATHER.....MOSTLY SUNNY.

MAX TEMPERATURE.....AROUND 86.

MIN HUMIDITY.....57 PERCENT.

20-FOOT WINDS.....SOUTH WINDS 7 TO 11 MPH...INCREASING TO 15 TO 20 MPH.

HAINES INDEX.....4 TO 5 OR OR LOW POTENTIAL FOR LARGE PLUME DOMINATED FIRE GROWTH TO OR MODERATE POTENTIAL FOR LARGE PLUME DOMINATED FIRE GROWTH.

MIXING HEIGHT.....1500 FT AGL...INCREASING TO 5400 FT AGL.

TRANSPORT WINDS.....SOUTH 15 TO 23 MPH.

LVORI.....3.

TIME (EDT)	6AM	8AM	10AM	NOON	2PM	4PM	6PM	8PM	10PM	MIDNGT	2AM	4AM
SKY (%).....	26	27	30	34	38	37	37	37	42	49	54	52
WEATHER COV.....												
WEATHER TYPE.....	NONE	NONE	NONE	NONE	NONE	NONE	NONE	NONE	NONE	NONE	NONE	NONE
TEMP.....	71	73	78	83	85	84	82	76	72	69	67	66
RH.....	93	84	71	61	57	59	63	76	87	93	100	100
20 FT WIND (MPH)....	S 7	S 7	S 9	S 12	S 14	S 14	S 12	S 10	S 8	S 7	S 6	S 5
20 FT WIND GUST.....	10	10	15	20	20	20	15	15	15	10	10	10
LVORI.....	5	4	3	1	1	1	1	3	5	5	5	8
HAINES INDEX.....	5	4	5	5	4	4	4	5	5	5	4	3

**☐ FIRE BEHAVIOR- Friday 5/27/2011**

Lloyd Brown – FBAN

**Previous Fire Behavior-** The fire moved very little to none. Smoldering and creeping was observed along with some torching on the northern areas of the fire.

**Predicted Fire Behavior- Divisions November, Oscar and Mike will be a large concern with the increase in forecasted winds today. These divisions will be on the windward side thus receiving significant pressure for potential escape.** Watch for torching that could loft embers across control lines. During peak wind gust expect torching and rapid rates of spread, especially after the fire grows much larger than an acre. Be aware of the local sea breeze influence and thunderstorm outflows, this will increase rates of spread and can change the fire direction very suddenly.

**Fuels/Fuel Model-** Pocosin (Tall Brush) - FM sh9

Rates of Spread-	Flame Lengths-	Probability of Ignition-	Spotting-
35-40 ch/hr	16 ft.	30-50%	0.2 Miles

**Fuel Moisture-** (\* indicates new maximum indices may be set for this day)

1 HR (1/4" or less)	10 HR (1/4"-1")	100 HR (1-3")	1000 HR (3-8")	Live Woody
8-11%	11%	15%	18%	70%

**Predicted Fire Danger Readings- FM G- Dare Bomb Range** (\* indicates new maximum indices may be set for this day)

Ignition Component	Spread Component	Energy Release Component	Burning Index	KBDI
26	16*	28	50*	471*

**Controllability-** Indirect attack should be used if fires become established. Use of aircraft should always be utilized. Safety of firefighters is of a critical concern.

## Major Hazards and Risks:

**Pumps-** Stay away from volume pumps. PTOs and exposed drive belts can kill you. Canal banks can collapse.

Noise levels can be high, wear hearing protection. Shut down pumps to service.

**AIR OPERATIONS-** Stay away from bucket drops. Use air to ground frequency when communicating with aircraft. Drops will knock over snags.

**DRIVING-** Drive defensively. Use passenger as a lookout, navigator, and backing guide. Obey speed limits. Use headlights and seatbelts. 10 MPH in very dusty/wet road conditions. Limit driving on interior roads to essential fire line personnel. Follow posted speed limits.

**HYDRATION/HEAT STRESS-** Drink often and drink a lot, before you get thirsty. 4:1 water to poweraid. Take frequent breaks.

**MOP-UP-** Blouse or close pant legs before entering burned area to prevent burns to your legs. Watch out for roads that have fire on the sides they can collapse due to ground fire. Learn to identify ash pits from local personnel.

**SNAGS-** Stay out of area, essential fire line personnel only, look at root system before working/parking in area.

**Hygiene-** Monitor/mitigate perishable food items. Continue to wash hands/use hand sanitizer.

**ENVIRONMENTAL HAZARDS-** Watch for and stay away from rattlesnakes and wildlife. Use insect repellent for ticks. Don't leave leftover food out on the fire. A fed bear is a dead bear not to mention the hazard it creates for humans!

**ACCIDENTS-** Follow the Medical Plan

**FATIGUE-** Mitigate with 2/1 work rest ratio. Use time off- shift wisely. Eat sensibly and continue to hydrate off duty.

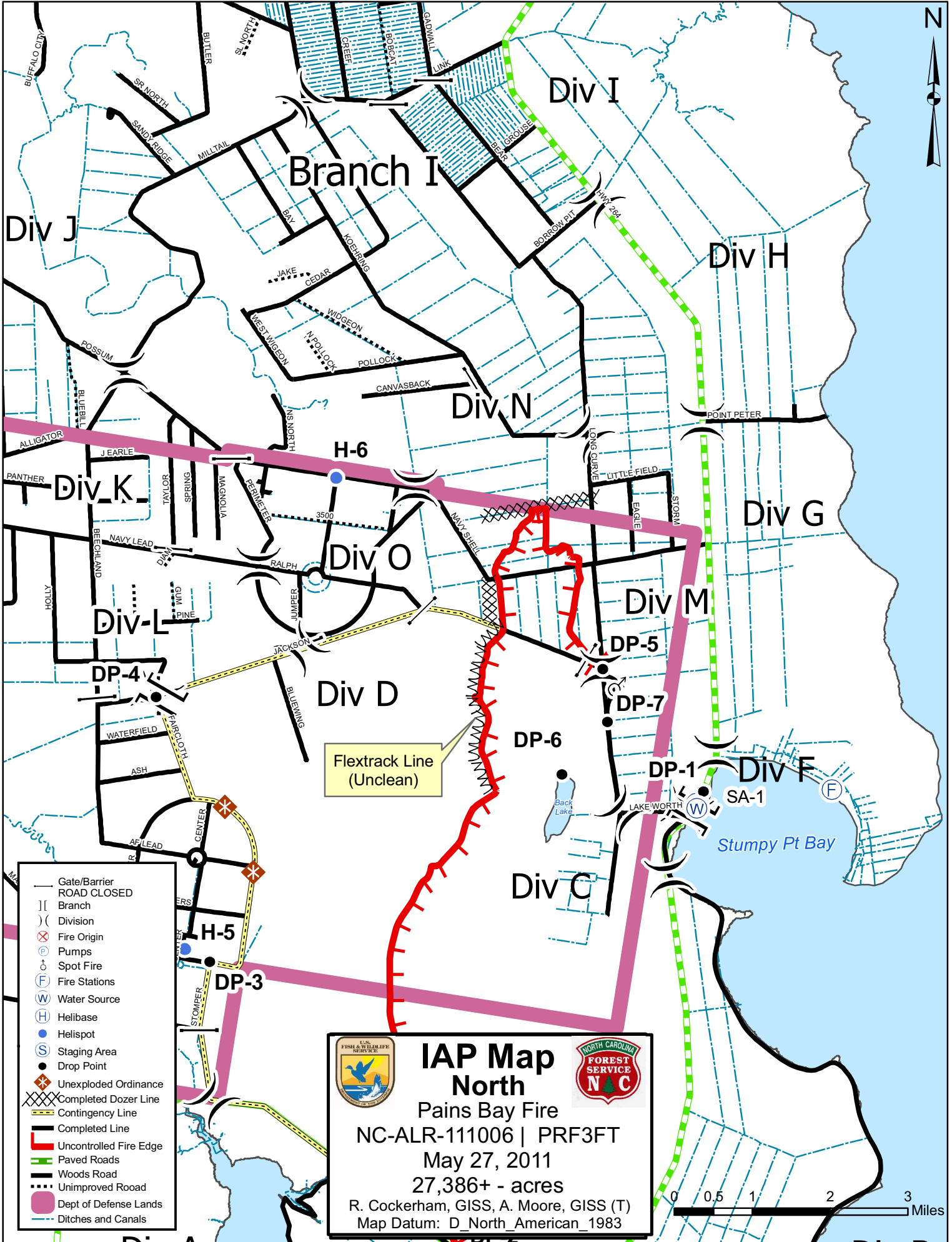
+++++

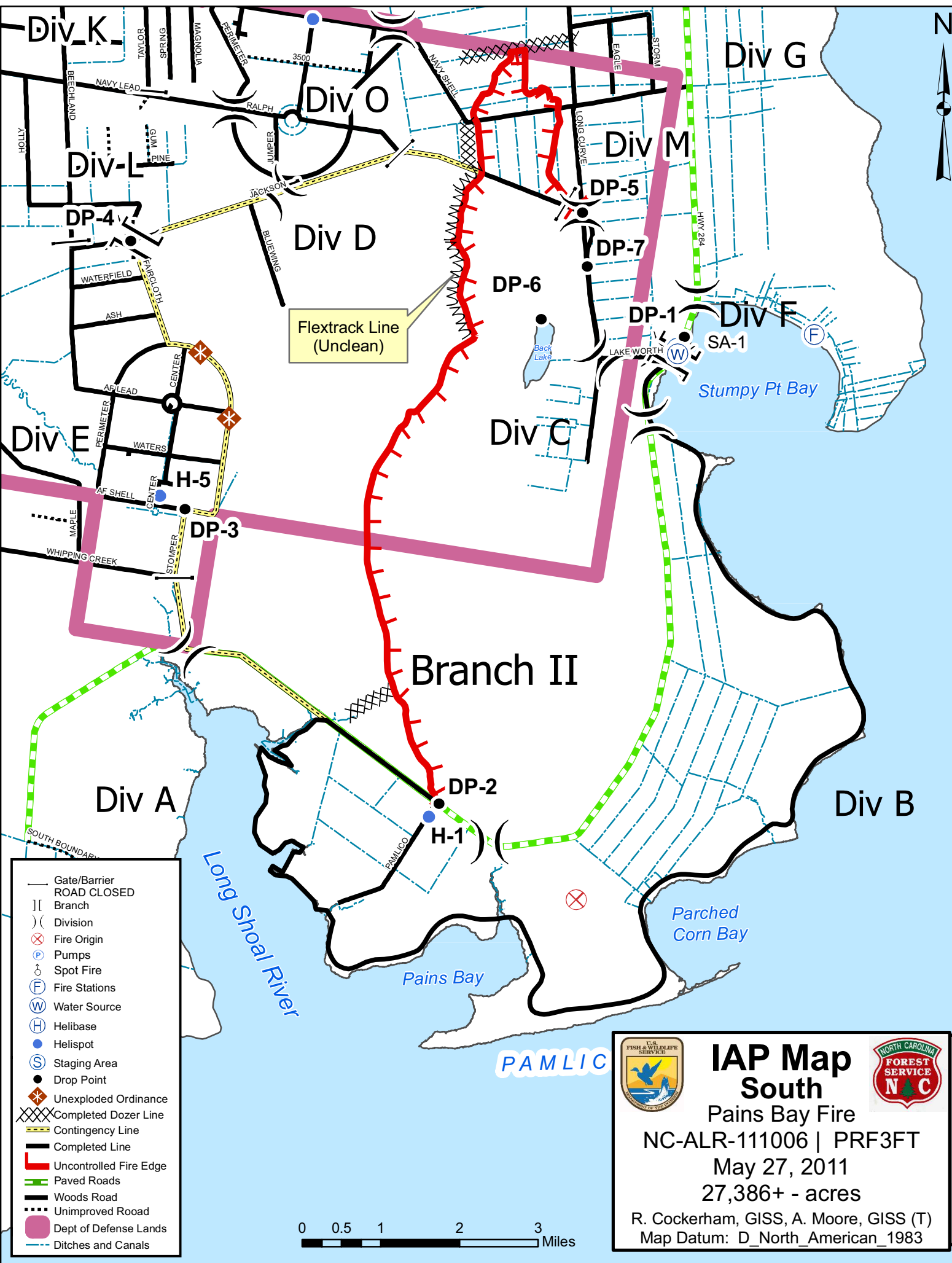
### Signs of complacency

- ⇒ Professional conduct slips
- ⇒ Less alert
- ⇒ Tunnel vision-less situational awareness
- ⇒ Routine task are performed automatically
- ⇒ We take short cuts: don't use PPE, backing without a spotter or neglecting personal hygiene
- ⇒ Day dreaming
- ⇒ Horse playing
- ⇒ Miss the details- a hard hat left on the back of the engine as the crew drives off or tool box left open
- ⇒ Radio communications are missed
- ⇒ Weather changes go unnoticed
- ⇒ Briefings are poorly attended or shortened
- ⇒ "Watch Out Situation #18" Taking a nap near the fireline

**SAFETY OFFICERS:** Don Kuykendall SOF2 and Andy Meadows SOF2


**LINE SAFETY OFFICER:** Keith Jenkins SOF2





- Gate/Barrier
- ROAD CLOSED
- || Branch
- ) ( Division
- ⊗ Fire Origin
- Ⓟ Pumps
- Ⓢ Spot Fire
- Ⓡ Fire Stations
- Ⓜ Water Source
- Ⓜ Helibase
- Helispot
- Ⓢ Staging Area
- Drop Point
- ⊗ Unexploded Ordinance
- XXXX Completed Dozer Line
- Contingency Line
- Completed Line
- Uncontrolled Fire Edge
- Paved Roads
- Woods Road
- ... Unimproved Road
- Dept of Defense Lands
- - - Ditches and Canals





## IAP Map South

### Pains Bay Fire


NC-ALR-111006 | PRF3FT

May 27, 2011

27,386+ - acres

R. Cockerham, GISS, A. Moore, GISS (T)

Map Datum: D\_North\_American\_1983



## PAINS BAY FIRE CONTACT LIST May 27, 2011

Name	Position	Phone
<b>COMMAND</b>		
Hildreth, Reid	ICT2	252-903-0076
Howard, John	ICT2 (T)	919-801-4167
Steltz, Diane	PIO2	919-444-3894
Suttles, Keith	LOFR	828-413-4441
Kuykendall, Donald	SOF2	919-218-9505
Meadows, Andy	SOF2	252-229-0160

<b>FWS</b>		
Pate, Greg	NCDFR	252-560-5018
Byrant, Mike	Project Leader-NWRs	
		252-216-7505
Lanier, Scott	Deputy Proj Leader- NWRs	
		252-216-7506
Crews, Tom		252-475-4269
Reid, Dana	IBA	541-215-0420
Alligator River NWR		252-473-1131
Czernik, Helen	IBA(T)	252-475-8339
Strawser, Bonnie	PIO2	252-216-8667
Stewart, Dennis	USFWS	252-473-1131x231

<b>COOPERATORS</b>		
Price, RD	Chief, Stumpy Pt Fire Dept	
		252-216-7146
Price, Curtis	Dpty Chief, Stumpy Pt FD	
	cell	252-216-7094
	home	252-475-1040
Sanderson, Sandy	Emergency Mgmt Coord	
		252-473-8326
Shackelford, Rob	NCFS	252-216-5271
	home	252-216-8800
	office	252-473-2531
Patterson, Karen	IBA NCFS	919-218-2586
Christopher, Ed	NCFS	252-542-0119
Doughtie, Doug	Dare County Sheriff	
		252-473-3444
Joe Lafferty	USAF	252-216-8751 cell
		252-473-1906 office
Lt. Cmdr. Marty Hill	US Navy	757-433-1336

<b>OPERATIONS</b>		
Burwell, Lee	OSC2	919-218-4263
Hardison, Mike	OSC2	910-770-0810
Humphries, Marshall	OSC2 (T)	919-218-6402
Hinson, Mike	DIVS A,B	910-874-2621
Elam, Brian	DIVS C,D,F	336-207-3058
Lathrop, Kerry	DIVS M	828-508-1349
Koenig, William "Jeff"	DIVS O	540-622-3507
Riggs, Greg	Structural Protect	252-229-1438
Ambrose, Jonathan	DIVS Night	910-512-5822
Winslow, Mike	DIVS N	919-631-7582

Name	Position	Phone
<b>AIR OPERATIONS</b>		
Tomlinson, Sherry	AOBD	253-293-3523
Plue, Scott	ASGS	208-661-6619
Yates, Greg	AOBD (T)	828-230-9101
Perry, Jerry	RADO	252-331-3435
<b>PLANS</b>		
Watson, Don	PSC2	910-334-0033
Register, Dennis	PSC2	252-229-0165
Rohr, Hans-Christian	RESL	910-874-2971
Liv, Chris	RESL (T)	252-567-0830
Bost, Mark	SITL	919-545-4499
Petruncio, Mike	FOBS	252-312-4371
Cockerham, Richard	GISS	828-292-4575
Moore, Alan	GISS (T)	919-218-1714
Brown, Lloyd	FBAN	336-239-4766
Curcio, Gary	THSP	919-810-5623
Rockis, Ronald	DMOB	218-766-7832
<b>FINANCE</b>		
Andres, Dave	FSC2	919-218-4997
Chellburg, Richard	PROC	336-239-1442
Lawrence, Tracy	TIME	252-333-5626
Myers, Ron	COST	919-902-1842
Kinghorn, Jennifer	EQTR	919-601-3861
Clarke, Craig	CTSP	
Baker, Susan	PTRC	252-796-7774
<b>LOGISTICS</b>		
Cleland, Troy	LSC2	252-229-1997
Shidal, Travis	ORDM	704-473-0430
Berg, Ned	SPUL	252-229-0103
Logan, Jamie	RCDM	828-413-2508
Tart, Paige	COML	252-903-1701
Credle, Chuck	COMT	252-944-8464
Collins, Bill	COMT	910-540-1833
Sharpton, Chris	RADO	828-989-7000
Aldridge, Jim	FACL	919-218-5511
Hubacker, Chris	FDUL	252-526-1470
Berry, Jerol	GSUL	252-741-0229
Huggins, Michael	EQPM	828-691-1683
Evans, Martin	EQPM	252-945-0607
Risen, Derick	EQPM	910-309-8677
Weaver, John	MEDL	720-771-6047
Halliburton, Jimmy	MEDL(t)	828-292-6503
Riner, Jimmy	SECM	270-703-0136

**ICP Fax**

**ICP**

**NWR Dispatch**

**252-473-1162**

**252-473-1137**

**252-473-1744 x 21**

**Fire Information:**

<http://www.facebook.com/?ref=home#!/pages/NC-Division-of-Forest-Resources/117366861613343>

<http://www.inciweb.org/incident/2218/>

