

PAINS BAY FIRE

NC-ALR-111006
PRF3FT (1502)



Incident Action Plan Monday

May 30, 2011
0700-1900 hrs



INCIDENT OBJECTIVES	1. INCIDENT NAME PAINS BAY FIRE	2. DATE PREPARED 5/29/2011	3. TIME PREPARED 2130
4. OPERATIONAL PERIOD (DATE/TIME) Monday, May 30, 2011 0700 to 1900 hrs			
5. GENERAL CONTROL OBJECTIVES FOR THE INCIDENT (INCLUDE ALTERNATIVES)			
<p><u>Control Objectives</u></p> <ol style="list-style-type: none"> 1. Provide for the safety of firefighters and general public by adherence to the 10 standard fire orders, 18 watch-out situations, in addition to maintaining direct and clear communications with all incident personnel and the general public. 2. Keep fire contained west of US Highway 264, south of US Highway 64 and east of Milltail Creek. 3. Coordinate with Dare Emergency Mangement Coordinator to initiate evacuation if fire threatens the village of Stumpy Point. 4. Continue to monitor traffic conditions on US Hwy 264. Maintain 24 hours LE presence at designated areas to provide for immediate closure, if needed, for escaped fire. 5. Make appropriate notifications to NCDOT, EM, NC State Highway Patrol, USFWS and D13 operations for predicted "superfog" or dense smoke events. 6. Continue soil saturation and mopup activities to extinguish ground fire. 7. Ensure that suppression & containment strategies on FWS property follow minimum impact suppression tactics. Escalation of tactics should consider amount of progress being made with current tactics, and the likelihood of those tactics being successful. <p><u>Management Objectives</u></p> <ol style="list-style-type: none"> 1. Keep general public & local officials in affected counties, as well as incident stake holders informed of fire status through situation updates and personal contacts. 2. Provide for accurate cost tracking and documentation of incident in accordance with IBH (Incident Business Handbook) procedures. 3. Emphasize cost containment through continual assessment of personnel and resource needs to provide (right-sizing) of incident. 			
6. WEATHER FORECAST FOR OPERATIONAL PERIOD			
Mostly sunny, 0% rain, 87°, SW@5G18, Rh 50%, LAL 1, ADI fair, LVORI 2, BC3			
7. GENERAL SAFETY MESSAGE			
See Attached Tailgate Safety Briefing Sheet. Supervisors sign after completing & return to Documentation Unit.			
8. ATTACHMENTS (X IF ATTACHED)			
<input checked="" type="checkbox"/> ORGANIZATION LIST (ICS 203)	<input checked="" type="checkbox"/> MEDICAL PLAN (ICS 206)	<input checked="" type="checkbox"/> SAFETY MESSAGE	
<input checked="" type="checkbox"/> ASSIGNMENT LIST (ICS 204)	<input checked="" type="checkbox"/> INCIDENT MAP	<input checked="" type="checkbox"/> PHONE LIST	
<input checked="" type="checkbox"/> COMMUNICATIONS PLAN (ICS 205)	<input checked="" type="checkbox"/> AIR OPS SUMMARY (ICS 220)	<input checked="" type="checkbox"/> UNIT LOG (ICS 214)	
9. PREPARED BY (PLANNING SECTION CHIEF)	10. APPROVED BY (INCIDENT COMMANDER)		

ORGANIZATION ASSIGNMENT LIST		9. Operations Section	
1. Incident Name: PAINS BAY FIRE		Field Ops	Lee Burwell (6/4)
		Planning Ops	Michael Hardison / Marshall Humphries (t) (6/4)
		a. Branch I	
2. Date Prepared 5/29/11 3. Time 1700		Branch Director	Ferrell Banks (6/4)
4. Operational Period 5/30/11 0700-1900		Division/Group	M Kerry Lathrop (6/4)
		Division/Group	N Mike Winslow (6/3)
5. Command and General Staff		Division/Group	O Jeff Koenig (6/5)
Incident Commander	Reid Hildreth (6/4)	Division/Group	Initial Attack Don Little (6/3) Scott Gibby (6/4)
Deputy	John Howard (t) (6/4)		
Safety Officers	A. Meadows / D. Kuykendall (6/4) J. Marshburn (t) (6/6)	Division/Group	
		b. Branch II	
		Branch Director	Kim Soper (6/9)
		Division/Group	A, B Mike Hinson (6/2)
		Division/Group	C, D, F Brian Elam (6/4)
		Division/Group	Structure Greg Riggs (6/3)
6a. Agency Administrators		Division/Group	
US FWS	Mike Bryant / Scott Lanier	c. Branch III	
NC DFR	Greg Pate	Branch Director	
6b. Agency Representatives		Division/Group	
US FWS	Shane Del Grasso	Division/Group	
NC DFR D-13	Ed Christopher	Division/Group	
US FWS	Bonnie Strawser	Division/Group	
Dare EM	Sandy Sanderson	Division/Group	
Stumpy Pt. FD	Curtis Price	d. Branch IV	
US Navy	Lt. Cmdr. Marty Hill	Branch Director	
US Air Force	Joe Lafferty	Division/Group	
7. Planning Section		Division/Group	
Chief	Don Watson (6/4)	Division/Group	
Deputy	Dennis Register (6/4)	Division/Group	
Resources Unit	Hans Rohr (6/4) Chris Liv (t) (6/4)	Division/Group	
		e. Other Groups	
Status Check-In	Jeanne Wambaugh (t) (6/10)	Water Handling Group	Rodney Black (6/3)
Situation Unit	Mark Bost (6/4)	Night Shift	Phillip Reams (6/7)
GISS	Richard Cockerham (6/4) Alan Moore (t) (6/4)	Staging	
		f. Air Operations Branch	
Field Observers	Mike Petruncio (6/4) Mark Russeau (6/10)	Air Ops Branch Directors	Walter Bunt (6/11) Greg Yates (t) (6/4)
Fire Behavior	Lloyd Brown (6/8)	Air Support Group Supervisor	Scott Plue (6/4)
Demobilization Unit	Ronald Rockis (6/8)	Helibase Manager	Mike Mcguire (6/8)
Documentation Unit	Jim Slye (6/4)		
8. Logistics Section		10. Finance Section	
Chief	Troy Cleland (6/4)	Chief	Dave Andres (6/4)
Supply Unit	Ned Berg (6/4)	Procurement Unit	Richard Chellberg (6/4)
Receiving & Dist	Jamie Logan (6/4)	Time Unit	Tracy Lawrence (6/4)
Ground Support Unit	Jerol Berry (6/4)	Cost Unit	Ron Meyers (6/4)
Facilities Unit	Jim Aldridge (6/4)	Equipment Time Recorders	Susan Baker (6/4) Jennifer Kinghorn (t) (6/4)
Food Unit	Chris Hubacker (6/4)		
Ordering Manager	Travis Shidal (6/4)	Incident Business Advisors	Dana Reid (6/2) Helen Czernik (6/5)
Communications Unit	Paige Tart (6/4)	Compensation / Claims Unit	
Communications Techs	Bill Collins (6/4)	Computer Specialist	Craig Clarke (6/4)
Radio Operator	C. Sharpton (6/4)		
Equipment Managers	M. Evans (6/7), M. Huggins (6/4) W. Sherwood (t), D. Risen (t)		
Medical Unit	K. Owens (6/6) J. Haliburton (t) (6/4)	Prepared by: Hans Rohr, RESL Chris Liv, RESL (t)	
Security Unit	Jimmy Riner (6/4)		

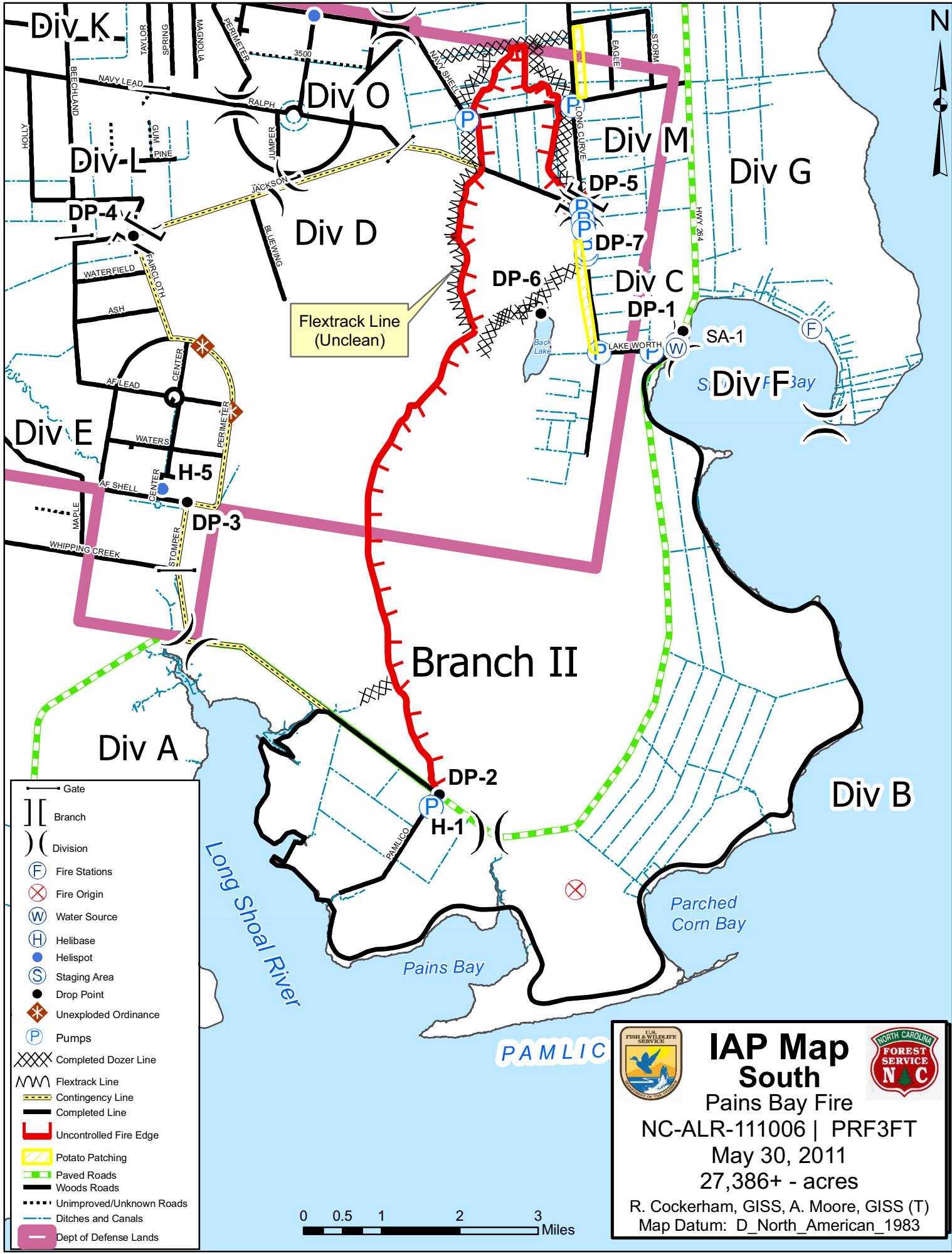
DIVISION ASSIGNMENT LIST		1. Branch		2. Division/Group WATER HANDLING			
3. Incident Name PAINS BAY FIRE		4. Operational Period Date: 5/30/2011 Time: 0700-1900hrs					
5. Operations Personnel							
Operations Section Chief	Lee Burwell (6/4) Marshall Humphries (t) (6/4) Mike Hardison (6/4)		Division/Group Supervisor	Rodney Black (6/3)			
Branch Director			Safety	Andy Meadows (6/4), Don Kuykendall (6/4) Jeff Marshburn (t) (6/6), Keith Jenkins (6/4)			
6. Resources Assigned this Period							
Strike Team/Task Force/ Resource Designator	Leader	Request #	Number Persons	Last Work Day	Drop Off PT./Time	Pick Up PT./Time	
WHSP	W. Payne	O-164	1	5/30	0700hrs	1900hrs	
WHSP	Miller Caison	E-378	1	6/3	0700hrs	1900hrs	
Pump Operator	L. Wicker		1	6/3	0700hrs	1900hrs	
(4) Tractors with 16" Lift Pumps NCS		E-314, E-315, E-360, E-361, E-255, E-256, S-13, S-14	0		0700hrs	1900hrs	
(2) 18" Volume Lift Pumps		E-354, S-5150	0		0700hrs	1900hrs	
16" Pump		E473	0		0700hrs	1900hrs	
Excavator DBR PA00736		E-204	0		0700hrs	1900hrs	
Excavator Operator	D. Strickland	O-240	1	6/6	0700hrs	1900hrs	
Dump Truck DBR	P. Meekins	E-253, O-256	1	6/7	0700hrs	1900hrs	
Dump Truck DBR	L. Spruill	E-254	1	6/5	0700hrs	1900hrs	
Driver	D. Bryan	E-378.2	1	6/1	0700hrs	1900hrs	
7. Control Operations							
<ul style="list-style-type: none"> • Winching: Think before you act. Analyze each situation. Pay attention to hand location, maintain a safe distance from cables under tension, and maintain communications between operator and crewman. • Excavator Work: It's your responsibility to stay clear. The excavator can swing 360 degrees in about one second. Before approaching, make eye contact with operator and allow him to idle down and come to a complete stop. • Dump Truck Operations: Dump trucks have a reduced visibility. All trucks should use a spotter while backing. At no time should anyone be behind a backing Vehicle! 							
8. Special Instructions							
<ul style="list-style-type: none"> • All supervisors ensure that personnel maintain safe distances during all air operations. • US 264 has re-opened to public traffic. Be Alert. 							
9. Division/Group Communication Summary							
Function	Frequency	System	Channel	Function	Frequency	System	Channel
Command North South		KING NIFC	Command 10 North 11 South 12	Initial Attack		KING NIFC	5
Tactical Div/Group		KING NIFC	1	Air to Ground		KING NIFC	8
Prepared by (Resource Unit Leader) Hans-Christian Rohr, Chris Liv (t)		Approved by (Planning Section Chief) Don Watson		Date 05/29/2011		Time 2030 hrs	

Incident Radio Communications Plan				1. Incident Name: Pains Bay Fire	2. Date/Time Prepared: 5/29/2011 1600hr	3. Operational Period (Date/Time) 5/30/2011
4. Basic Radio Channel Utilization						
System/Cache	Channel	Function	Frequency/Tone	Assignment	Remarks	
NCDNR	CH 1	Tac 1	RX 151.400W TX 151.400W tone 136.5	Water Handling Group		
NCDNR	CH 2	Tac 2	RX 151.460W TX 151.460W tone 136.5	Div D,E,C,F		
NCDNR	CH 3	Tac 3	RX 151.310W TX 151.310W tone 136.5	Structure Protection Div-M		
NIFC	CH 4	Tac 4	RX 168.050N TX 168.050N	Div. A,B		
NIFC	CH 5	Tac 5	RX 168.200N TX 168.200N	Initial Attack, Div G, Div N	I A	
NIFC	CH 6	Tac 6	RX 168.600N TX 168.600N	Div H, Div-O, Div I		
	CH 7					
NIFC	CH 8	US FWS Air to Ground	RX 171.575N TX 171.575N tone 131.8	Fire Line		
NIFC	CH 9	TAC 9	RX 168.350N TX 168.350N	Fire Line TAC		
NCDNR	CH 10	Stumpy Point CMD Repeater 10	RX 151.325W tone 136.5 TX 159.330W tone 110.9	CMD REPEATER 10		
US FWS	CH 11	Colombia CMD Repeater 11	RX 172.675N TX 168.500N tone 118.8	RAWS CMD North	North side of Fire Communications	
US FWS	CH 12	Englehart CMD Repeater 12	RX 164.625N TX 163.150N tone 186.2	CMD South	South side of Fire Communications	
US FWS	CH 13	Tac 13	RX 162.2375N TX 162.2375N tone 156.7			
	CH 14					
Air to Ground	CH 15	Air to Ground Secondary	RX 169.925N TX 169.925N			
AIR GRD	CH 16	AIR GUARD	RX 168.625N TX 168.625N Tone 110.9	Emergency contact with Aircraft		
Communications		Communications Unit	252-903-1701 cell 252-473-1241 office	Paige Tart		
ICS 205	Prepared By (Communications Unit Leader): Paige Tart					

MEDICAL PLAN	1. Incident Name	2. Date Prepared	3. Time Prepared	4. Operational Period				
	Pains Bay Fire	05/29/11	1730	05/30/11 Day/Night				
5. Incident Medical Aid Station								
Medical Aid Stations	Location			Paramedics				
				Yes	No			
Dare County Parks and Recreation Bldg (0900-2030hrs)	410 Airport Road Manteo, NC					X		
Stumpy Point VFD (0730-0830hrs)	Stumpy Point					X		
Robert Wade EMT (0800-2000hrs) 804-387-6188	Line EMT Staged @ Navy Shell & Long Curve Rd					X		
6. Transportation								
A. Ambulance Services								
Name	Address		Phone	Paramedics				
				Yes	No			
Dare County EMS Station #8	6677 Hwy 64 Business, Manns Harbor, NC		Dare Central (911)	X				
Dare County Med Flight	1078 Driftwood Dr., Manteo, NC		911	X				
B. Incident Ambulances								
Name	Location			Paramedics				
				Yes	No			
7. Hospitals								
Name	Address	Travel Time		Phone	Helipad		Burn Center	
		Air	Ground		Yes	No	Yes	No
Outer Banks Hospital	Mile Post 14, 4800 S. Croatan Hwy Nags Head, NC Latitude: N 35 ⁰ 56' 20.33" Longitude: W 75 ⁰ 45' 5.89"	15	30	(252) 449-4500	X			X
Sentara Norfolk General Hospital	Norfolk, VA TRAUMA BURN CENTER	30	90	(757) 388-3000	X		X	
8. Medical Emergency Procedures								
<p>**FOR CRITICAL EMERGENCIES** Step 1. Report all injuries and illnesses to the closest DIVS. DIVS will notify the Line EMT and ICP Communications, and include the extent of the injury and transportation needed. Do not use patient's name on the radio. A medical emergency should be declared over the radio immediately. All radio traffic will be kept to a minimum so emergency procedures can proceed uninhibited. Step 2. ICP Communications will notify Dare Central Dispatch (911) and MEDL. Safety will be notified. Dare County EMS will respond and determine the appropriate treatment, transportation and facility needed. If ground transportation is determined, assign personnel to meet the ambulance at a location that is easily accessible to lead them to the site of the injured. If patient is transported to meet EMS personnel need to remain with patient until EMS has arrived. Line EMT is staged at Navy Shell & Long Curve Rd. to respond to injuries and stabilize patient until EMS personnel arrive. **FOR MINOR EMERGENCIES** Step 1. Patient - Will Advise Their Supervisor Step 2. Patient - Will Receive Care Step 3. Patient Supervisor/Patient - Will Advise Division Supervisor Step 4. Div. Sup./Patient Supervisor- Will Document Incident On 214 Step 5. Div. Sup. /Patient's Supervisor - Will Advise The Medical Unit Leader At The End Of Each Shift Of ANY Illness or Injury And Of ANY Medical Care Given.</p> <p>**If transportation is needed it will be arranged by MEDL.**</p> <p>Nighttime Operations: Communicate all emergency medical needs directly to Dare County Emergency Communications via 800mhz radio furnished by NCDNR Dare County Ranger, and contact Safety Officers Andy Meadows 252-229-0160 or Don Kuykendall 919-218-9505 and Jimmy Halliburton MEDL (T) 828-292-6503.</p> <p><u>ANY INJURY OR ILLNESS IN WHICH ANY TYPE OF CARE IS GIVEN WILL BE DOCUMENTED ON THE UNIT'S 214 AND THE MEDICAL UNIT LEADER WILL EITHER RECEIVE A COPY OF THE 214 OR BE ADVISED VERBALLY BY THE DIVISION SUPERVISOR, PATIENT'S SUPERVISOR OR PATIENT AT THE END OF EACH SHIFT.</u></p>								
Prepared by (Medical Unit Leader) Jimmy Halliburton, MEDL(T) / Keith Owens, MEDL				10. Reviewed by (Safety Officer) Jeffrey Marshburn, SOF (T)				

AIR OPERATIONS SUMMARY		PREPARED BY: Walter Bunt / Greg Yates AOBD (T)		PREPARED DATE/TIME: 5/29/2011 1700	
1. INCIDENT NAME Pains Bay Fire		2. OPERATIONAL PERIOD DATE: 5/30/2011		START TIME: 0800 END TIME: 2000 SUNRISE: 0549 SUNSET: 2012	
3. REMARKS (Safety Notes, Hazards, Air Operations Special Equipment, etc.) -BE ALERT FOR HIGH WINDS AND TURBULANCE -NOTE THAT SOME TOWERS ARE NOT MARKED ON SECTIONAL MAPS. TOWERS COULD BE UP TO 2500 FEET TALL -ALL FIREFIGHTING AIRCRAFT NEED TO SQUAWK 1255. FLY WITH LIGHTS ON. -HEADS UP WHEN PERFORMING WATER DROPS AROUND CREWS ON THE GROUND -MAINTAIN CLEAR COMMUNICATIONS -GROUND PERSONNEL SHOULD STAY CLEAR OF HELICOPTER DEPARTURE PATHS FROM DIP SITES Safety Before Mission		Navy Dare Range will be performing air operations in the key hole @ 4000' MSL beginning 5/19		4. MEDEVAC A/C: Dare County Med Flight 5. TFR: 1/2182 A-22 3100' MSL	
6. PERSONNEL		7. FREQUENCIES		8. FIXED WING # Available/ Type/ Make-Model/FAA N# / Bases	
AOBD: Walter Bunt	Phone: 530-921-3435	AM	FM	Heavy Air Tankers Available Through SACC-678-320-3012	
AOBD (T) Greg Yates	828-230-9101	123.125		ALLIGATOR RIVER DISPATCH 252-473-1744 X 21	
ASGS: Scott Plue	208-661-6619	122.425		Olive Jones A/C 252-473-1840	
ATGS: Bill Palmer	828-273-9255			Air Force Tower 252-473-1721	
ATGS: Rob Bickerstaffe	828-989-1314			Navy Tower 252-473-2201	
HLCO: NONE			Rx: 171.575 N Tx: 171.575 N Tone 131.8	252-473-2720	
			AIR/GROUND: Primary	Engelhart loading crew:	
			AIR/GROUND: Secondary	Bobby Jones 252-526-1472	
HEBT: Mike Maguire	828-775-1871		COMMAND RPT SEE ICS 205	Johnathan Queen 336-978-6556	
			Rx:	Engelhart Airstrip: N35 33.74' X W75 57.31'	
				Edenton Airstrip: N36 01.72 X W76 34.19'	
				Currituck Airstrip: N36 23.94' X W76 0.98'	
			DECK FREQ:	ATGS Aircraft Location: MQI	
				N11AR A-11	
				N135BA A-31	
DARE BOMBING RANGE:		122.900		S.E.A.T.-S- Available @ 1000, first dispatch from Kinston - 252-520-2402 Kinston Operations Duty Officer- John Willis Order through Alligator Dispatch	

9. HELICOPTERS (Use Additional Sheets As Necessary)													
FAA N#	TY	MAKE/MODEL	BASE	AVAIL	START	REMARKS	FAA N#	TY	MAKE/MODEL	BASE	AVAIL	START	REMARKS
N161KA	A-26	1	K-Max	MQI	0800	Chris Sotherland 509-668-1592	N2HX	A-25	3	Bell 407	Pains HB	0830	Persephone Thompson 989-305-1223
N905CH	A-39	1	Sikorsky S-61	MQI	0830	Mark Carter 336-302-0342	N894HA	A-20	3	Bell 206	Pains HB	0830	Tom Kennedy 912-308-6036



PAMLIC

Tailgate Briefing

Fire Behavior Forecast
Time and Date Forecast Issued: 1900 Saturday 5/29/ 2011

For: Monday 5/30/2011

MEMORIAL DAY

Pains Bay Fire
Lloyd Brown FBAN

Weather Summary: A weak trough of low pressure will be over the region tonight through Wednesday. Today will be Sunny with patchy fog early in the morning. High temp 86, Minimum RH 55 percent, **1 hour fuel moisture – 11 percent.** Light and variable winds will become SW @5mph early in the morning then becoming S to 10mph in the afternoon

Time	0800	1200	1400	1600
Temp	76	85	86	86
RH	79	57	55	57
Wind	SW-5	S-5	S-5	S-7

Night Weather: Partly Cloudy.

1800 Temp 84 RH 63 Wind S-9

2200 77 76 S-6

0200 74 84 SW-5

0400 61 84 SW-5

Local Thresholds – Watch Out! Wind speed over 15mph, RH less than 25, Temperature over 90

General Fire Behavior: The fire made its last run on Monday May 23rd burning approximately 3,000 additional acres. It laid down in pocosin fuels with an over story of Pines. Since that time smoldering ground fire has been observed along with active fire creeping in the litter and flare-ups that die back down. Lofting embers have been observed but no active spotting. The fire may become more active today with increased drying and burn more intensely in unburned fuels if it spots.

Specific Fire Behavior

Alpha, Bravo – Mostly cold perimeter with some interior smoldering ground fire. Remaining fire in this division is not expected to hinder control efforts. Remaining fire should eventually burn itself out or be extinguished by natural moisture.

Charlie, Delta, Foxtrot – Smoldering ground fire on the perimeter along Long Curve Road may be active today. Currently the National Weather Service is forecasting a cold front passage on Thursday night. Winds will shift to out of the NW on Friday but no wind up to and through the frontal passage is forecasted to exceed 10 mph. If the forecast holds true the winds should not adversely affect containment efforts.

Mike, November, Oscar - These **three divisions contain the most active fire**, mostly ground fire in the interior and along the perimeter of these divisions. There is also active fire creeping in the litter of these divisions with occasional flare-ups that die back down. Shading of fuels and partial to full sheltering from the wind should contribute to containment efforts. The fire should be active today with the forecasted weather conditions. Low wind speeds up to and through the frontal passage should not adversely affect containment efforts.

Fuel Model	ROS chains/hr	Flame Length	Spot Distance – Miles	PIG
Sh9 - Very High Load Humid Climate shrub	26	13	.2	27 percent

KBDI....498

ERC....28

Controllability- Indirect attack should be used if fires become established. Aircraft should always be utilized in the containment effort.

HEALTH AND SAFETY MESSAGE

SAFETY starts with *YOU*

We are ALL accountable for SAFE behaviors

INCIDENT: Pains Bay

DATE: 5/30/11

TIME: 0700-1900

Signature:

Major Hazards and Risks:

WINCHING OPERATION- Think before you act. Analyze each situation. Avoid entanglement in cable. Pay attention to hand location, maintain a safe distance from cables under tension, and maintain communications between operator and crewman.

PUMPS- Stay away from volume pumps. PTOs and exposed drive belts can kill you. Canal banks can collapse. Noise levels can be high, wear hearing protection. Shut down pumps to service.

SNAGS- Hazard trees, both dead snags and live green trees, are one of the most common risks encountered on the fire line. All fire fighters should frequently survey their work area for potential hazards. Refer to pages 20- 21 in the IRPG Guide.

DRIVING – Memorial Day weekend!!! Expect high level of traffic both vehicular and pedestrian. Be extra cautious while driving in town. Drive defensively. Use passenger as a lookout, navigator, and backing guide. Obey speed limits. Use headlights and seatbelts. 10 MPH in very dusty road conditions. Clean your windows.

FIRE BEHAVIOR – Maintain situational awareness, follow 10 Standard Orders, recognize / mitigate the 18 Watch Out Situations, and apply LCES. Know the fire weather forecast. Monitor conditions.

HYDRATION/HEAT STRESS- Drink often and drink a lot, before you get thirsty. 4:1 water to poweraid or gatorade. Take frequent breaks.

THUNDERSTORMS- Thunderstorms may be noted by a sudden reverse in wind direction, and noticeable rise in wind speed, and a sharp drop in temperature. If one arises, seek shelter in a vehicle if possible. Refer to page 19 in the IRPG guide.

WORK/REST- Observe 2:1ratio. Work with supervisor to mitigate excess hours by the next shift.

ENVIRONMENTAL HAZARDS – Watch for and stay away from rattlesnakes and wildlife. Use insect repellent for ticks.

Accidents: Contact your supervisor and inform him/her. Follow emergency procedures at bottom of medical plan.

*****Conduct Tailgate Safety Briefings / Briefing Checklist Inside Back Cover of I.R.P.G.**

Standard Firefighting Orders

1. Keep informed on fire weather conditions and forecast.
2. Know what your fire is doing at all times.
3. Base all actions on current and expected behavior of the fire.
4. Identify escape routes and safety zones and make them known.
5. Post lookouts when there is a possible danger.
6. Be alert. Keep calm. Think clearly. Act decisively.
7. Maintain prompt communications with your forces, your supervisor and adjoining forces.
8. Give clear instructions and insure they are understood.
9. Maintain control of your forces at all times.
10. Fight fire aggressively, having provided for safety first.

18 Watchouts Situations

1. Fire not scouted and sized up.
2. In country not seen in daylight.
3. Safety zones and escape routes not identified.
4. Unfamiliar with weather and local factors influencing fire behavior.
5. Uninformed on strategy, tactics, and hazards.
6. Instructions and assignments not clear.
7. No communication link with crewmembers/supervisors.
8. Constructing line without safe anchor point.
9. Building fireline downhill with fire below.
10. Attempting frontal assault on fire.
11. Unburned fuel between you and the fire.
12. Cannot see main fire, not in contact with anyone who can.
13. On a hillside where rolling material can ignite fuel below.
14. Weather is getting hotter and drier.
15. Wind increases and/or changes direction.
16. Getting frequent spot fires across line.
17. Terrain and fuels make escape to safety zones difficult.
18. Taking a nap near the fire line.

SAFETY OFFICERS: Don Kuykendall SOF2, Andy Meadows SOF2 and Jeff Marshburn SOF (T)

LINE SAFETY OFFICER: Keith Jenkins SOF2

PAINS BAY FIRE CONTACT LIST May 30, 2011

Name	Position	Phone
COMMAND		
Hildreth, Reid	ICT2	252-903-0076
Howard, John	ICT2 (T)	919-801-4167
Steltz, Diane	PIO2	919-444-3894
Suttles, Keith	LOFR	828-413-4441
Thompson, Gary	LOFR	910-334-0028
Kuykendall, Donald	SOF2	919-218-9505
Meadows, Andy	SOF2	252-229-0160
AGENCY ADMINISTRATORS		
Pate, Greg	NCDFR	252-560-5018
Byrant, Mike	FWS Project Leader	252-216-7505
Lanier, Scott	FWS Dep. Proj Leader	252-216-7506
Crews, Tom	FWS	252-475-4269
Reid, Dana	IBA	541-215-0420
Czernik, Helen	IBA(T)	252-475-8339
Strawser, Bonnie	PIO2	252-216-8667
Stewart, Dennis	FWS	252-473-1131x231
Alligator River NWR		252-473-1131
COOPERATORS		
Price, RD	Chief, Stumpy Pt FD	252-216-7146
Price, Curtis	Dep. Chief, Stumpy Pt FD	252-216-7094 cell
		252-475-1040 home
Sanderson, Sandy	Emergency Mgmt Coord	252-473-8326
Shackelford, Rob	NCDFR	252-216-5271
		252-216-8800 home
		252-473-2531 office
Patterson, Karen	IBA NCFS	919-218-2586
Christopher, Ed	NCDFR	252-542-0119
Doughtie, Doug	Dare County Sheriff	252-473-3444
Joe Lafferty	USAF	252-216-8751 cell
		252-473-1906 home
Lt. Cmdr. Marty Hill	US Navy	757-433-1336
OPERATIONS		
Burwell, Lee	OSC2	919-218-4263
Hardison, Mike	OSC2	910-770-0810
Humphries, Marshall	OSC2 (T)	919-218-6402
Hinson, Mike	DIVS A,B	910-874-2621
Elam, Brian	DIVS C,D,F	336-207-3058
Lathrop, Kerry	DIVS M	828-508-1349
Koenig, William "Jeff"	DIVS O	540-622-3507
Riggs, Greg	Structural Protect	252-229-1438
Ambrose, Jonathan	DIVS Night	910-512-5822
Winslow, Mike	DIVS N	919-631-7582

Name	Position	Phone
AIR OPERATIONS		
Walter Bunt	AOBD	530-921-3435
Plue, Scott	ASGS	208-661-6619
Yates, Greg	AOBD (T)	828-230-9101
Perry, Jerry	RADO	252-331-3435
PLANS		
Watson, Don	PSC2	910-334-0033
Register, Dennis	PSC2	252-229-0165
Rohr, Hans-Christian	RESL	910-874-2971
Liv, Chris	RESL (T)	252-567-0830
Wambaugh, Jeanne	SCKN (T)	814-203-7596
Bost, Mark	SITL	919-545-4499
Petruncio, Mike	FOBS	252-312-4371
Cockerham, Richard	GISS	828-292-4575
Moore, Alan	GISS (T)	919-218-1714
Brown, Lloyd	FBAN	252-619-4481
Curcio, Gary	THSP	919-810-5623
FINANCE		
Andres, Dave	FSC2	919-218-4997
Chellburg, Richard	PROC	336-239-1442
Lawrence, Tracy	TIME	252-333-5626
Myers, Ron	COST	919-902-1842
Kinghorn, Jennifer	EQTR	919-601-3861
Clarke, Craig	CTSP	
Baker, Susan	PTRC	252-542-0654
LOGISTICS		
Cleland, Troy	LSC2	252-229-1997
Shidal, Travis	ORDM	704- 473-0430
Berg, Ned	SPUL	252-229-0103
Logan, Jamie	RCDM	828-413-2508
Tart, Paige	COML	252-903-1701
Credle, Chuck	COMT	252-944-8464
Collins, Bill	COMT	910-540-1833
Sharpton, Chris	RADO	828-989-7000
Aldridge, Jim	FACL	919-636-2471
Hubacker, Chris	FDUL	252-526-1470
Berry, Jerol	GSUL	252-741-0229
Huggins, Michael	EQPM	828-691-1683
Evans, Martin	EQPM	252-945-0607
Risen, Derick	EQPM	910-309-8677
Weaver, John	MEDL	720-771-6047
Halliburton, Jimmy	MEDL(t)	828-292-6503
Clark Wade	Line EMTP	804-387-6188
Riner, Jimmy	SECM	270-703-0136

ICP 252-473-1137 **ICP Demob** 252-473-1241 **NWR Dispatch** 252-473-1744 x 21
ICP Fax 252-473-1162 **ICP Comm.** 252-473-1241

Fire Information:

<http://www.facebook.com/?ref=home#!/pages/NC-Division-of-Forest-Resources/117366861613343>
<http://www.inciweb.org/incident/2218/>

ERROR: undefinedresource
OFFENDING COMMAND: findresource

STACK:

/0
/CSA
/0
/CSA
-mark-