

PAINS BAY FIRE

NC-ALR-111006
PRF3FT (1502)



Incident Action Plan

Thursday
June 2, 2011
0700-1900 hrs



INCIDENT OBJECTIVES	1. INCIDENT NAME PAINS BAY FIRE	2. DATE PREPARED 3/1/2011	3. TIME PREPARED 2130
4. OPERATIONAL PERIOD (DATE/TIME) Thursday, June 2, 2011 0700 to 1900 hrs			
5. GENERAL CONTROL OBJECTIVES FOR THE INCIDENT (INCLUDE ALTERNATIVES)			
<p><u>Control Objectives</u></p> <ol style="list-style-type: none"> 1. Provide for the safety of firefighters and general public by adherence to the 10 standard fire orders, 18 watch-out situations, in addition to maintaining direct and clear communications with all incident personnel and the general public. 2. Keep fire contained west of US Highway 264, south of US Highway 64 and east of Milltail Creek. 3. Coordinate with Dare Emergency Mangement Coordinator to initiate evacuation if fire threatens the village of Stumpy Point. 4. Continue to monitor traffic conditions on US Hwy 264. Maintain 24 hours LE presence at designated areas to provide for immediate closure, if needed, for escaped fire. 5. Make appropriate notifications to NCDOT, EM, NC State Highway Patrol, USFWS and D13 operations for predicted "superfog" or dense smoke events. 6. Continue to implement written Water Handling Plan. 7. Ensure that suppression & containment strategies on FWS property follow minimum impact suppression tactics. Escalation of tactics should consider amount of progress being made with current tactics, and the likelihood of those tactics being successful. <p><u>Management Objectives</u></p> <ol style="list-style-type: none"> 1. Keep general public & local officials in affected counties, as well as incident stake holders informed of fire status through situation updates and personal contacts. 2. Provide for accurate cost tracking and documentation of incident in accordance with IBH (Incident Business Handbook) procedures. 3. Emphasize cost containment through continual assessment of personnel and resource needs to provide (right-sizing) of incident. 			
6. WEATHER FORECAST FOR OPERATIONAL PERIOD			
Partly Cloudy, 0% rain, 83°, NW9G19 shifting to NE1 3G19, RH 51%, LAL 1, ADI fair, LVORI 3, BC1			
7. GENERAL SAFETY MESSAGE			
<p>See Attached Tailgate Safety Briefing Sheet.</p> <p>Supervisors sign after completing & return to Documentation Unit.</p>			
8. ATTACHMENTS (X IF ATTACHED)			
<input checked="" type="checkbox"/> ORGANIZATION LIST (ICS 203)	<input checked="" type="checkbox"/> MEDICAL PLAN (ICS 206)	<input checked="" type="checkbox"/> SAFETY MESSAGE	
<input checked="" type="checkbox"/> ASSIGNMENT LIST (ICS 204)	<input checked="" type="checkbox"/> INCIDENT MAP	<input checked="" type="checkbox"/> PHONE LIST	
<input checked="" type="checkbox"/> COMMUNICATIONS PLAN (ICS 205)	<input checked="" type="checkbox"/> AIR OPS SUMMARY (ICS 220)	<input checked="" type="checkbox"/> UNIT LOG (ICS 214)	
9. PREPARED BY (PLANNING SECTION CHIEF)	10. APPROVED BY (INCIDENT COMMANDER)		

ORGANIZATION ASSIGNMENT LIST		9. Operations Section	
1. Incident Name: PAINS BAY FIRE		Field Ops	Lee Burwell (6/4)
		Planning Ops	Michael Hardison (6/4), Brian Council (t) (6/5)
		a. Branch I	
2. Date Prepared 6/1/11		3. Time 1700	
4. Operational Period Thursday, 6/2/11 0700-1900		Branch Director	Ferrell Banks (6/4)
5. Command and General Staff		Division/Group	M Kerry Lathrop (6/4) Rob Montague (6/9)
		Division/Group	N Mike Winslow (6/3)
		Division/Group	O Scott Gibby (6/4) Marshall Gibbs (t)
Incident Commander	Reid Hildreth (6/4)	Division/Group	Initial Attack Don Little (6/3)
Deputy	John Howard (t) (6/4)	b. Branch II	
Safety Officers	A. Meadows / D. Kuykendall (6/4) K. Jenkins / J. Marshburn (t) (6/6)	Branch Director	Marshall Humphries (t) (6/4)
Information Officers	Diane Steltz (6/4) Susan Heisey (t) (6/8)	Division/Group	A, B Greg Riggs (6/3)
Liaison Officer	Gary Thompson (6/8)	Division/Group	C, D, F Brian Elam (6/4)
6a. Agency Administrators		Division/Group	Structure Mike Hinson (6/2)
US FWS	Mike Bryant / Scott Lanier	c. Branch III	
NC DFR	Greg Pate	Branch Director	
6b. Agency Representatives		Division/Group	
US FWS	Shane Del Grosso	Division/Group	
NC DFR D-13	Ed Christopher	Division/Group	
US FWS	Bonnie Strawser	Division/Group	
Dare EM	Sandy Sanderson	Division/Group	
Stumpy Pt. FD	Curtis Price	d. Branch IV	
US Navy	Lt. Cmdr. Marty Hill	Branch Director	
US Air Force	Joe Lafferty	Division/Group	
7. Planning Section		Division/Group	
Chief	Don Watson (6/4)	Division/Group	
Deputy	Dennis Register (6/4)	Division/Group	
Resources Unit	Hans Rohr (6/4) Chris Liv (t) (6/4)	Division/Group	
Status Check-In	Jeanne Wambaugh (t) (6/10)	e. Other Groups	
Situation Unit	Mark Bost (6/4)	Water Handling Group	Rodney Black (6/3)
GISS	Richard Cockerham (6/4) Alan Moore (t) (6/4)	Night Shift	Phillip Reams (6/7)
Field Observers	Mike Petruncio (6/4) Mark Russeau (6/10)	f. Air Operations Branch	
Fire Behavior	Lloyd Brown (6/8)	Air Ops Branch Directors	Walter Bunt (6/11) Greg Yates (t) (6/4)
Smoke Analyst	Gary Curcio (6/8), John Cook (6/3)	Air Tactical Grp Supervisor	Bill Palmer (6/4)
Demobilization Unit	Ronald Rockis (6/8)	Air Support Grp Supervisor	Scott Plue (6/4)
Documentation Unit	Jim Slye (6/4)	Helibase Manager	Mike Maguire (6/8)
8. Logistics Section		10. Finance Section	
Chief	Troy Cleland (6/4)	Chief	Dave Andres (6/4)
Supply Unit	Ned Berg (6/4)	Procurement Unit	Richard Chellberg (6/4)
Receiving & Dist	Jamie Logan (6/4)	Time Unit	Tracy Lawrence (6/4)
Ground Support Unit	Jerol Berry (6/4)	Cost Unit	Ron Meyers (6/4)
Facilities Unit	Jim Aldridge (6/4)	Equipment Time Recorders	Susan Baker (6/4) Jennifer Kinghorn (t) (6/4)
Food Unit	Chris Hubacker (6/4)	Incident Business Advisors	Dana Reid (6/2) Helen Czernik (6/5)
Ordering Manager	Travis Shidal (6/4)	Compensation / Claims Unit	Kurt Hinz (6/11)
Communications Unit	Paige Tart (6/4)	Computer Specialist	Craig Clarke (6/4)
Communications Tech	Bill Collins (6/4)	Prepared by: Hans Rohr, RESL Chris Liv, RESL (t)	
Radio Operator	C. Sharpton (6/4)		
Equipment Managers	M. Evans (6/7), M. Huggins (6/4) W. Sherwood (t) (6/5)		
Medical Unit	K. Owens (6/2) J. Haliburton (t) (6/4)		
Security Unit	Jimmy Riner (6/4)		

Tailgate Briefing

Pains Bay Fire
Lloyd Brown FBAN

Fire Behavior Forecast
Time and Date Forecast Issued: 1900 Wednesday 6/1/ 2011
For: Thursday 6/2/2011

Weather Summary: High pressure will remain anchored just west of the region through the end of the week. Several weak cold fronts will pass through during that time. One passed through last night and another cold front will pass through Saturday or Sunday. **RH will be much lower today.**

Today will be Mostly Sunny. **High temp 84, Minimum RH 44%. 1 hour fuel moisture – 9 %.** Light NW winds early in the morning going to N and then NE after noon.

Time	0800	1200	1400	1600
Temp	76	82	84	84
RH	74%	56%	44%	47%
Wind	NW-5	NE-10G15	NE-9G15	E-7G10

Night Weather: Partly Cloudy.

1800 Temp 83 RH 52 Wind E-5

2200 76 60 S-3G5

0200 73 64 NE-5

0400 72 65 NE-7G10

Local Thresholds – Watch Out! Wind speed over 15mph, RH less than 25, Temperature over 90

General Fire Behavior: The fire made its last run on Monday May 23rd burning approximately 3,000 additional acres. It laid down in pocosin fuels with an over story of Pines. Since that time smoldering ground fire has been observed along with active fire creeping in the litter and flare-ups that die back down. The fire has burned actively in green and cured fuels. Lofting embers have been observed with some spotting. The fire will continue to be active today with increased drying and lower relative humidity.

Specific Fire Behavior

Alpha, Bravo – Mostly cold perimeter with some interior backing ground fire. Remaining ground fire in this division may require additional attention in the future if it continues to back toward the SW perimeter.

Charlie, Delta, Foxtrot – Smoldering ground fire on the perimeter along Long Curve Road will be active today. Cold front passage last night will shift winds to out of the N. This should not cause any major problems for planned operations today. Low humidity may “wake up” pockets of ground fire that have not been extinguished through pumping operations.

Mike, November, Oscar - These **three divisions contain the most active fire**, mostly ground fire in the interior and along the perimeter of these divisions. There is also active fire creeping in the litter of these divisions with occasional flare-ups that die back down. Green fuels will continue to burn and cured but unburned fine fuels will also reburn causing flare-ups. Lofting embers along perimeters may cause spotting into unburned fuels. North winds will put pressure on Jackson Road. Shading of fuels and partial to full sheltering from the wind should contribute to containment efforts. The fire should be active today with the forecasted weather conditions

Fuel Model	ROS chains/hr	Flame Length	Spot Distance – Miles	PIG
Sh9 - Very High Load Humid Climate shrub	26	13-17	.3	36 %

KBDI....516

ERC....33

Controllability- Indirect attack should be used if fires become established. Aircraft should always be utilized in the containment effort.

HEALTH AND SAFETY MESSAGE

SA = Situational Awareness = Staying Alive!!!

INCIDENT: Pains Bay Fire | DATE: 6/2/11 | TIME: 0700-1900

Major Hazards and Risks:

FIRING OPERATIONS – Ensure all resources are briefed prior to starting firing operation. LCES should be in place and reevaluated during operation.

HYDRATION/HEAT STRESS - Temperatures are on the rise. The body shuts down the thirst mechanism when you're dehydrated, therefore, be sure to drink a lot, before you get thirsty. 4:1 water to Poweraid or Gatorade.

FIRE BEHAVIOR – Maintain situational awareness, follow 10 Standard Orders, recognize / mitigate the 18 Watch Out Situations, and apply LCES. Know the fire weather forecast. Monitor conditions.

FIRE WEATHER – Increased temperatures and curing of fuels near control lines could significantly impact fire behavior. Continue to assess situational awareness!

ENVIRONMENTAL HAZARDS - Watch for and stay away from rattlesnakes, stinging insects and wildlife. Use appropriate insect repellents. If bitten or stung, seek medical attention immediately.

DRIVING – Drive defensively. Use passenger as a lookout, navigator, and backing guide. Obey speed limits. Use headlights and seatbelts. 10 MPH in very dusty road conditions. Clean your windows.

AIR OPERATIONS- Stay away from bucket and retardant drop areas. Use air to ground frequency when communicating with aircraft. Stay safe distance from drop zones of tankers and helicopters.

SNAGS – Stay out of area, essential fireline personnel only. Look at root system before working/parking. Refer to IRPG pg. 20-21.

Briefing: Use briefing checklist on inside back cover of I.R.P.G.



7. NO COMMUNICATION LINK WITH CREW MEMBERS/SUPERVISOR

Safety Officers: Keith Jenkins SOF2, Don Kuykendall SOF2, Andy Meadows SOF2, & Jeff Marshburn SOF2(T)

DIVISION ASSIGNMENT LIST		1. Branch Branch I		2. Division/Group Division M			
3. Incident Name PAINS BAY FIRE		4. Operational Period Date: 6/2/2011 Time: 0700-1900hrs					
5. Operations Personnel							
Operations Section Chiefs	Lee Burwell (6/4) Mike Hardison (6/4) Brian Council (t) (6/5)	Division/Group Supervisors	Kerry Lathrop (6/4) Rob Montague (6/9)				
Branch Director	Ferrell Banks (6/4)	Safety	Andy Meadows (6/4), Don Kuykendall (6/4) Jeff Marshburn (t) (6/6) Keith Jenkins (6/4)				
6. Resources Assigned this Period							
Strike Team/Task Force/ Resource Designator	Leader	Request #	Number Persons	Last Work Day	Drop Off Time	Pick Up Time	
ENG6 Strike Team NCS#5		E-389	11	6/3	0700hrs	1900hrs	
STEN	J. Tate						
ENG6 Engine 6-63	B. Canady / R. Freeman						
ENG6 Engine 6-32	T. Steves / J. Turnage						
ENG6 Engine 6-40	B. Morgan / A. Cagle						
ENG6 Engine 2-41	A. Farmer / J. Keener						
ENG6 Engine 2-31	D. Wahlers / D.S. Mitchell						
WAT3 NCS 7E1	S. McDonald	E-309	1	6/6	0700hrs	1900hrs	
Line EMTP	Clark Wade	O-216	1	6/2	0700hrs	1900hrs	
7. Control Operations							
<ul style="list-style-type: none"> Burn out pocket if conditions warrant. Identify critical areas and special needs. T6 Engines maintain pump operations for mop up. 							
8. Special Instructions							
<ul style="list-style-type: none"> Mop-up dozer line North of Navy Shell Rd. All supervisors ensure that personnel maintain safe distances during all air operations. Identify escape routes if Long Curve Road is compromised. Limit use of foam within 300 ft of any water source. US 264 has re-opened to public traffic. Be Alert. Ensure finance is advised on time spend on FWS Lands. 							
9. Division/Group Communication Summary							
Function	Frequency	System	Channel	Function	Frequency	System	Channel
Command North South		KING NIFC	Command 10 North 11 South 12	Initial Attack		KING NIFC	5
Tactical Div/Group		KING NIFC	3	Air to Ground		KING NIFC	8
Prepared by (Resource Unit Leader) Hans-Christian Rohr, Chris Liv (t)		Approved by (Planning Section Chief) Don Watson		Date 6/1/2011		Time 2030 hrs	

DIVISION ASSIGNMENT LIST		1. Branch Branch I		2. Division/Group Division N			
3. Incident Name PAINS BAY FIRE		4. Operational Period Date: 6/2/2011 Time: 0700-1900hrs					
5. Operations Personnel							
Operations Section Chiefs		Lee Burwell (6/4) Mike Hardison (6/4) Brian Council (t) (6/5)		Division/Group Supervisors		Mike Winslow (6/3)	
Branch Director		Ferrell Banks (6/4)		Safety		Andy Meadows (6/4), Don Kuykendall (6/4) Jeff Marshburn (t) (6/6), Keith Jenkins (6/4)	
6. Resources Assigned this Period							
Strike Team/Task Force/ Resource Designator	Leader	Request #	Number Persons	Last Work Day	Drop Off Time	Pick Up Time	
Task Force #1			7		0700 hrs	1900 hrs	
TFLD	Jon Albertson	O-193		6/2			
T6 ENG VAVAF Engine 11	C. Ramey	E-6		6/7			
T6 ENG VAVAF Engine 21	G. Norris	E-8		6/7			
WAT3 NCS 13E1	M. Johnson	E-385, O-249		6/7			
TPL2 D-4 Strike Team		E-515	4	6/11	0700 hrs	1900 hrs	
STPL	W. Bell						
TPL2 4x22	J. Hathaway						
TPL2 4x41	T. Buck						
TPL2 D-8 Strike Team			5		0700 hrs	1900 hrs	
STPL	L. Swindell	O-254					
TPL2 8x2	J. Sellers	E-458		6/5			
TPL2 8x43	J. Williams	E-458		6/5			
Geo-boy FWS	FWS		2		0700 hrs	1900 hrs	
7. Control Operations <ul style="list-style-type: none"> Mop-up control line North of Navy Shell Rd. Utilize Engines for mop-up operations. Geo-boy will mow fuel brake south of Canvasback Rd. 							
8. Special Instructions <ul style="list-style-type: none"> All supervisors ensure that personnel maintain safe distances during all air operations. Limit use of foam within 300 ft of any water source. Identify escape routes and safety zones. US 264 has re-opened to public traffic. Be Alert. Ensure Finance is advised at end of shift with hours worked on USFWS land. 							
9. Division/Group Communication Summary							
Function	Frequency	System	Channel	Function	Frequency	System	Channel
Command North South		KING NIFC	Command 10 North 11 South 12	Initial Attack		KING NIFC	5
Tactical Div/Group		KING NIFC	5	Air to Ground		KING NIFC	8
Prepared by (Resource Unit Leader) Hans-Christian Rohr, Chris Liv (t)		Approved by (Planning Section Chief) Don Watson		Date 6/1/2011		Time 2030 hrs	

DIVISION ASSIGNMENT LIST			1. Branch Branch I		2. Division/Group Division O Page 1 of 2			
3. Incident Name PAINS BAY FIRE			4. Operational Period Date: 6/2/2011 Time: 0700-1900hrs					
5. Operations Personnel								
Operations Section Chiefs		Lee Burwell (6/4) Mike Hardison (6/4) Brian Council (†) (6/5)		Division/Group Supervisor		Scott Gibby (6/4) Marshall Gibbs (†)		
Branch Director		Ferrell Banks (6/4)		Safety		Andy Meadows (6/4), Don Kuykendall (6/4) Jeff Marshburn (†) (6/6), Keith Jenkins (6/4)		
6. Resources Assigned this Period								
Strike Team/Task Force/ Resource Designator		Leader		Request #	Number Persons	Last Work Day	Drop Off Time	Pick Up Time
ENG6 Strike Team IA#1							0700hrs	1900hrs
STEN		D. Poole		O-192	1	6/2		
ENG6 SC-FMF		Ray / Wyman / Rister		E-13	3	6/6		
ENG6 IL-SHF		Paukert / Hancock / Walker		E-14	3	6/6		
ENG6 Strike Team NCS#6				E-390	9	6/3	0700hrs	1900hrs
STEN		F. Harris						
ENG6 Engine 5-20		K. Bunting / E. Matherly						
ENG6 Engine 5-50		J. Short / J. Cumbo						
ENG6 Engine 8-31		K. Powell / J. Green						
ENG6 FWS Engine 963		J. Tripp / Wyatt		E-397		6/2	0700hrs	1900hrs
TPL2 NCS D-7 Strike Team				E-457	5	6/5	0700 hrs	1900 hrs
STPL		Michael Hughes						
TPL2 7x21		James Pugh						
TPL2 7x41		Jason O'Neal						
7. Control Operations								
<ul style="list-style-type: none"> Tractor plows reinforce control lines and construct pre-suppression lines. T6 Engines complete mop up operations between Jackson Road and Navy Shell Road. Assist water group as needed. Coordinate resources with Div N and Div D as needed. 								
8. Special Instructions								
<ul style="list-style-type: none"> All supervisors ensure that personnel maintain safe distances during all air operations. Limit use of foam within 300 ft of any water source. US 264 has re-opened to public traffic. Be Alert. 								
9. Division/Group Communication Summary								
Function	Frequency	System	Channel	Function	Frequency	System	Channel	
Command North South		KING NIFC	Command 10 North 11 South 12	Initial Attack		KING NIFC	5	
Tactical Div/Group		KING NIFC	6	Air to Ground		KING NIFC	8	
Prepared by (Resource Unit Leader) Hans-Christian Rohr, Chris Liv (†)		Approved by (Planning Section Chief) Don Watson			Date 6/1/2011		Time 2030 hrs	

DIVISION ASSIGNMENT LIST		1. Branch Branch I		2. Division/Group Division O Page 2 of 2			
3. Incident Name PAINS BAY FIRE		4. Operational Period Date: 6/2/2011 Time: 0700-1900hrs					
5. Operations Personnel							
Operations Section Chiefs		Lee Burwell (6/4) Mike Hardison (6/4) Brian Council (t) (6/5)		Division/Group Supervisor		Scott Gibby (6/4) Marshall Gibbs (t)	
Branch Director		Ferrell Banks (6/4)		Safety		Andy Meadows (6/4) Don Kuykendall (6/4) Jeff Marshburn (t) (6/6) Keith Jenkins (6/4)	
6. Resources Assigned this Period							
Strike Team/Task Force/ Resource Designator	Leader	Request #	Number Persons	Last Work Day	Drop Off Time	Pick Up Time	
TPL2 NCS D-13 Strike Team		E-516	5	6/11	0700hrs	1900hrs	
STPL	T. Whitaker						
TPL2 13x51	B. Phellps/J. Swain						
TPL2 13x61	B. Grubbs						
ENG6 VASHP Engine 41	J. Jarrells	E-9	2	6/5	0700hrs	1900hrs	
WAT3 NCS 4E1	D. Butler	E-310	1	6/7	0700hrs	1900hrs	
Marsh Master DBR	unstaffed	E-222	0				
7. Control Operations							
<ul style="list-style-type: none"> Tractor plows reinforce control lines and construct pre-suppression lines. T6 Engines complete mop up operations between Jackson Road and Navy Shell Road. Assist water group as needed. Coordinate resources with Div N and Div D as needed. 							
8. Special Instructions							
<ul style="list-style-type: none"> All supervisors ensure that personnel maintain safe distances during all air operations. Limit use of foam within 300 ft of any water source. US 264 has re-opened to public traffic. Be Alert. 							
9. Division/Group Communication Summary							
Function	Frequency	System	Channel	Function	Frequency	System	Channel
Command North South		KING NIFC	Command 10 North 11 South 12	Initial Attack		KING NIFC	5
Tactical Div/Group		KING NIFC	6	Air to Ground		KING NIFC	8
Prepared by (Resource Unit Leader) Hans-Christian Rohr, Chris Liv (t)		Approved by (Planning Section Chief) Don Watson		Date 6/1/2011		Time 2030 hrs	

DIVISION ASSIGNMENT LIST		1. Branch Branch I		2. Division/Group Initial Attack Group			
3. Incident Name PAINS BAY FIRE		4. Operational Period Date: 6/2/2011 Time: 0700-1900hrs					
5. Operations Personnel							
Operations Section Chiefs	Lee Burwell (6/4) Mike Hardison (6/4) Brian Council (t) (6/5)		Division/Group Supervisors	Don Little (6/3)			
Branch Director	Ferrell Banks (6/4)		Safety	Andy Meadows (6/4), Don Kuykendall (6/4) Jeff Marshburn (t) (6/6), Keith Jenkins (6/4)			
6. Resources Assigned this Period							
Strike Team/Task Force/ Resource Designator	Leader	Request #	Number Persons	Last Work Day	Drop Off Time	Pick Up Time	
ENG6 FWS PLE2	A. Davis /M. Howle	E-200, O-144, O-35	2		0700hrs	1900hrs	
Flex Trac FWS AX4	E. Meekins	E-328, O-166	1		0700hrs	1900hrs	
Flex Trac FWS AX2	J. Swain	E-380, O-82	1		0700hrs	1900hrs	
7. Control Operations <ul style="list-style-type: none"> Resources will provide initial attack for new fire starts on FWS District 1 (Alligator River, Pocosin Lakes, Pungo, Pea Island, Swan Quarter, Mattamuskeet NWR). Resources will be dispatched by FWS through DIVS S. Don Little. Equipment staged at Alligator River Work Center. 							
8. Special Instructions <ul style="list-style-type: none"> All supervisors ensure that personnel maintain safe distances during all air operations. Limit use of foam within 100' of any water surface. US 264 has re-opened to public traffic. Be Alert. 							
9. Division/Group Communication Summary							
Function	Frequency	System	Channel	Function	Frequency	System	Channel
Command North South		KING NIFC	Command 10 North 11 South 12	Initial Attack		KING NIFC	5
Tactical Div/Group		KING NIFC	5	Air to Ground		KING NIFC	8
Prepared by (Resource Unit Leader) Hans-Christian Rohr, Chris Liv (t)		Approved by (Planning Section Chief) Don Watson		Date 6/1/2011		Time 2030 hrs	

DIVISION ASSIGNMENT LIST		1. Branch Branch II		2. Division/Group Division A, B			
3. Incident Name PAINS BAY FIRE		4. Operational Period Date: 6/2/2011 Time: 0700-1900hrs					
5. Operations Personnel							
Operations Section Chiefs	Lee Burwell (6/4) Mike Hardison (6/4) Brian Council (t) (6/5)		Division/Group Supervisor	Greg Riggs (6/3)			
Branch Director	Marshall Humphries (t) (6/4)		Safety	Andy Meadows (6/4), Don Kuykendall (6/4) Jeff Marshburn (t) (6/6), Keith Jenkins (6/4)			
6. Resources Assigned this Period							
Strike Team/Task Force/ Resource Designator	Leader	Request #	Number Persons	Last Work Day	Drop Off Time	Pick Up Time	
THSP	N. Brickhouse	O-101	1	12/25	0700hrs	1900hrs	
Flex trac DBR 13x64	R. Page (off 6/3-6/5)		1		0700hrs	1900hrs	
Flex trac FWS Ax6	E. Meekins		1		0700hrs	1900hrs	
7. Control Operations <ul style="list-style-type: none"> Patrol for hotspots. Flex tracs will assess ground fire on SW corner of DIV. as smoke and visibility allow. 							
8. Special Instructions <ul style="list-style-type: none"> All supervisors ensure that personnel maintain safe distances during all air operations. US 264 has re-opened to public traffic. Be Alert. Pay special attention to road crews repairing guard rails on Hwy. 264; there are smoke and visibility concerns. 							
9. Division/Group Communication Summary							
Function	Frequency	System	Channel	Function	Frequency	System	Channel
Command North South		KING NIFC	Command 10 North 11 South 12	Initial Attack		KING NIFC	5
Tactical Div/Group		KING NIFC	4	Air to Ground		KING NIFC	8
Prepared by (Resource Unit Leader) Hans-Christian Rohr, Chris Liv (t)		Approved by (Planning Section Chief) Don Watson		Date 6/1/2011		Time 2030 hrs	

DIVISION ASSIGNMENT LIST			1. Branch Branch II		2. Division/Group Division C,D,F Page 1 of 2			
3. Incident Name PAINS BAY FIRE			4. Operational Period Date: 6/2/2011 Time: 0700-1900hrs					
5. Operations Personnel								
Operations Section Chiefs		Lee Burwell (6/4) Mike Hardison (6/4) Brian Council (t) (6/5)		Division/Group Supervisor		Brian Elam (6/4)		
Branch Director		Marshall Humphries (t) (6/4)		Safety		Andy Meadows (6/4), Don Kuykendall (6/4) Jeff Marshburn (t) (6/6), Keith Jenkins (6/4)		
6. Resources Assigned this Period								
Strike Team/Task Force/ Resource Designator		Leader		Request #	Number Persons	Last Work Day	Drop Off Time	Pick Up Time
ENG6 Strike Team NCS#4				E-388	11	6/3	0700hrs	1900hrs
STEN		J. Marlowe						
ENG6 Engine 12-65		L. Thompson / H. Marks						
ENG6 Engine 12-70		J. Cranfill / R. Gore						
ENG6 Engine 1-85		W. Loudermelt / K. Robinson						
ENG6 Engine 2-9		J. Land / P. Story						
ENG6 Engine 9-45		D. Vigil / C. Choplin						
Flex Trac Strike Team							0700hrs	1900hrs
Flex Trac DBR 13x66		A. Mann		E-460	1			
Flex Trac DBR 13x68		T. Harrell		E-461	1			
7. Control Operations								
<ul style="list-style-type: none"> Flex Tracs refresh fuel breaks south of Jackson Rd. On DIV Charlie, reclaim fuel break north of Stumpy Point Bay using Minimum Impact Suppression Tactics by mowing vegetation. Mop up spots along east side of Long Curve Rd and South Navy Shell Rd and churn with dozers. Secure DBR shop and 2 structures west of Hwy 264, if fire establishes itself east of Long Curve Road. 								
8. Special Instructions								
<ul style="list-style-type: none"> All supervisors ensure that personnel maintain safe distances during all air operations. Limit use of foam within 300 ft of any water source. US 264 has re-opened to public traffic. Be Alert. 								
9. Division/Group Communication Summary								
Function	Frequency	System	Channel	Function	Frequency	System	Channel	
Command North South		KING NIFC	Command 10 North 11 South 12	Initial Attack		KING NIFC	5	
Tactical Div/Group		KING NIFC	2	Air to Ground		KING NIFC	8	
Prepared by (Resource Unit Leader) Hans-Christian Rohr, Chris Liv (t)		Approved by (Planning Section Chief) Don Watson			Date 6/1/2011		Time 2030 hrs	

DIVISION ASSIGNMENT LIST		1. Branch Branch II		2. Division/Group Division C,D,F Page 2of 2			
3. Incident Name PAINS BAY FIRE		4. Operational Period Date: 6/2/2011 Time: 0700-1900hrs					
5. Operations Personnel							
Operations Section Chiefs	Lee Burwell (6/4) Mike Hardison (6/4) Brian Council (t) (6/5)	Division/Group Supervisor	Brian Elam (6/4)				
Branch Director	Marshall Humphries (t) (6/4)	Safety	Andy Meadows (6/4), Don Kuykendall (6/4) Jeff Marshburn (t) (6/6), Keith Jenkins (6/4)				
6. Resources Assigned this Period							
Strike Team/Task Force/ Resource Designator	Leader	Request #	Number Persons	Last Work Day	Drop Off Time	Pick Up Time	
Marshmaster with mower FWS	E. Meekins/R. Nordsvan		2		0700hrs	1900hrs	
(6) 6" Water Pumps		E-338, E-339, E-5191, E-5192, S-5151, S-5352	0				
(3) 2.5 " Pumps			0				
Mop-up Truck NCS		E-359	0				
(2) Mop-up trailers NCS		E-239, E-240	0				
7. Control Operations <ul style="list-style-type: none"> Flex Tracs refresh fuel breaks south of Jackson Rd. On DIV Charlie, reclaim fuel break north of Stumpy Point Bay using Minimum Impact Suppression Tactics by mowing vegetation. Mop up spots along east side of Long Curve Rd and South Navy Shell Rd and churn with dozers.. Secure DBR shop and 2 structures west of Hwy 264, if fire establishes itself east of Long Curve Road. 							
8. Special Instructions <ul style="list-style-type: none"> All supervisors ensure that personnel maintain safe distances during all air operations. Limit use of foam within 300 ft of any water source. US 264 has re-opened to public traffic. Be Alert. 							
9. Division/Group Communication Summary							
Function	Frequency	System	Channel	Function	Frequency	System	Channel
Command North South		KING NIFC	Command 10 North 11 South 12	Initial Attack		KING NIFC	5
Tactical Div/Group		KING NIFC	2	Air to Ground		KING NIFC	8
Prepared by (Resource Unit Leader) Hans-Christian Rohr, Chris Liv (t)		Approved by (Planning Section Chief) Don Watson		Date 6/1/2011		Time 2030 hrs	

DIVISION ASSIGNMENT LIST		1. Branch Branch II		2. Division/Group Structure Protection Group			
3. Incident Name PAINS BAY FIRE		4. Operational Period Date 6/2/2011 Time: 0700-1900hrs					
5. Operations Personnel							
Operations Section Chiefs	Lee Burwell (6/4) Mike Hardison (6/4) Brian Council (t) (6/5)		Division/Group Supervisor	Mike Hinson (6/2)			
Branch Director	Kim Soper (6/1) Marshall Humphries (t) (6/4)		Safety	Andy Meadows (6/4), Don Kuykendall (6/4) Jeff Marshburn (t) (6/6), Keith Jenkins (6/4)			
6. Resources Assigned this Period							
Strike Team/Task Force/ Resource Designator	Leader	Request #	Number Persons	Last Work Day	Drop Off Time	Pick Up Time	
ICT4 / LIASON	R. Shackelford		1		0700hrs	1900hrs	
LOFR/ Deputy Fire Chief	Curtis Price		1		0700hrs	1900hrs	
ENG Stumpy VFD	Available		4		0700hrs	1900hrs	
ENG Manns Harbor VFD	Available		5		0700hrs	1900hrs	
ENG Roanoke Island VFD	Available		4		0700hrs	1900hrs	
Dare County VFD Resources	Available				0700hrs	1900hrs	
7. Control Operations							
<ul style="list-style-type: none"> Be available to execute Stumpy Point Evacuation Plan if identified trigger points are met. Triage and prepare structures for burnout operations in Stumpy Point community. US 264 has re-opened to public traffic. Be Alert. 							
8. Special Instructions							
<ul style="list-style-type: none"> All supervisors ensure that personnel maintain safe distances during all air operations. Mann's Harbor and Roanoke Island VFDs are call-when-needed. Limit use of foam within 300 ft of any water source. 							
9. Division/Group Communication Summary							
Function	Frequency	System	Channel	Function	Frequency	System	Channel
Command North South		KING NIFC	Command 10 North 11 South 12	Initial Attack		KING NIFC	5
Tactical Div/Group		KING NIFC	3	Air to Ground		KING NIFC	8
Prepared by (Resource Unit Leader) Hans-Christian Rohr, Chris Liv (t)		Approved by (Planning Section Chief) Don Watson		Date 6/1/2011		Time 2030 hrs	

DIVISION ASSIGNMENT LIST			1. Branch	2. Division/Group WATER HANDLING (Page 1 of 2)			
3. Incident Name PAINS BAY FIRE			4. Operational Period Date: 6/2/2011 Time: 0700-1900hrs				
5. Operations Personnel							
Operations Section Chiefs		Lee Burwell (6/4) Mike Hardison (6/4) Brian Council (t) (6/5)		Division/Group Supervisor		Rodney Black (6/3)	
Branch Director				Safety		Andy Meadows (6/4), Don Kuykendall (6/4) Jeff Marshburn (t) (6/6), Keith Jenkins (6/4)	
6. Resources Assigned this Period							
Strike Team/Task Force/ Resource Designator	Leader	Request #	Number Persons	Last Work Day	Drop Off Time	Pick Up Time	
WHSP	W. Payne	O-164	1	6/3	0700hrs	1900hrs	
WHSP	M. Caison	O-205	1	6/3	0700hrs	1900hrs	
TPL2 NCS 13X62	Terrell (off 6/2)	E-228	0		0700hrs	1900hrs	
Long Reach Excavator PVT			1		0700hrs	1900hrs	
Excavator DBR PA00736	D. Strickland	E-204, O-240	1	6/6	0700hrs	1900hrs	
Dump Truck DBR	P. Meekins (off 6/2)	E-253, O-256	1		0700hrs	1900hrs	
Dump Truck DBR	L. Spruill (off 6/2)	E-254	0	6/5	0700hrs	1900hrs	
Dump Truck FWS	G. Perry		1				
Mechanic	R. Rozier	E-383	1	6/11	0700hrs	1900hrs	
Front End Loader DBR	M. Guthrie		1		0700hrs	1900hrs	
Pump Operator	L. Wicker	E-390.3.2	1	6/3	0700hrs	1900hrs	
7. Control Operations							
<ul style="list-style-type: none"> Install and maintain pumps as needed. Utilize tractors to churn soil and direct water where needed. 							
8. Special Instructions							
<ul style="list-style-type: none"> Ensure pump logs are turned in daily to Finance. All supervisors ensure that personnel maintain safe distances during all air operations. US 264 has re-opened to public traffic. Be Alert. Winching: Analyze each situation before you act. Pay attention to hand location, maintain a safe distance from cables under tension, and maintain communications between operator and crewman. Excavator Work: It's your responsibility to stay clear. The excavator can swing 360 degrees in about one second. Before approaching, make eye contact with operator and allow him to idle down and come to a complete stop. Dump Truck Operations: Dump trucks have reduced visibility. All trucks should use a spotter while backing. At no time should anyone be behind a backing Vehicle! 							
9. Division/Group Communication Summary							
Function	Frequency	System	Channel	Function	Frequency	System	Channel
Command North South		KING NIFC	Command 10 North 11 South 12	Initial Attack		KING NIFC	5
Tactical Div/Group		KING NIFC	1	Air to Ground		KING NIFC	8
Prepared by (Resource Unit Leader) Hans-Christian Rohr, Chris Liv (t)		Approved by (Planning Section Chief) Don Watson		Date 6/1/2011		Time 2030 hrs	

DIVISION ASSIGNMENT LIST			1. Branch	2. Division/Group WATER HANDLING (Page 2 of 2)			
3. Incident Name PAINS BAY FIRE			4. Operational Period Date: 6/2/2011 Time: 0700-1900hrs				
5. Operations Personnel							
Operations Section Chiefs	Lee Burwell (6/4) Mike Hardison (6/4) Brian Council (t) (6/5)		Division/Group Supervisor	Rodney Black (6/3)			
Branch Director			Safety	Andy Meadows (6/4), Don Kuykendall (6/4) Jeff Marshburn (t) (6/6), Keith Jenkins (6/4)			
6. Resources Assigned this Period							
Strike Team/Task Force/ Resource Designator	Leader	Request #	Number Persons	Last Work Day	Drop Off Time	Pick Up Time	
(22) 16" Volume Lift Pumps			0				
(1) 18" Volume Lift Pump			0				
(2) 24" Volume Lift Pumps			0				
7. Control Operations							
<ul style="list-style-type: none"> Install and maintain pumps as needed. Utilize tractors to churn soil and direct water where needed. 							
8. Special Instructions							
<ul style="list-style-type: none"> Ensure pump logs are turned in daily to Finance. All supervisors ensure that personnel maintain safe distances during all air operations. US 264 has re-opened to public traffic. Be Alert. Winching: Analyze each situation before you act. Pay attention to hand location, maintain a safe distance from cables under tension, and maintain communications between operator and crewman. Excavator Work: It's your responsibility to stay clear. The excavator can swing 360° in about one second. Before approaching, make eye contact with operator and allow him to idle down and come to a complete stop. Dump Truck Operations: Dump trucks have reduced visibility; use a spotter while backing. At no time should anyone be behind a backing Vehicle! 							
9. Division/Group Communication Summary							
Function	Frequency	System	Channel	Function	Frequency	System	Channel
Command North South		KING NIFC	Command 10 North 11 South 12	Initial Attack		KING NIFC	5
Tactical Div/Group		KING NIFC	1	Air to Ground		KING NIFC	8
Prepared by (Resource Unit Leader) Hans-Christian Rohr, Chris Liv (t)		Approved by (Planning Section Chief) Don Watson			Date 6/1/2011		Time 2030 hrs

DIVISION ASSIGNMENT LIST		1. Branch		2. Division/Group Night Shift			
3. Incident Name PAINS BAY FIRE		4. Operational Period Date: 6/2/2011 Time: 0700-1900hrs					
5. Operations Personnel							
Operations Section Chiefs	Lee Burwell (6/4) Mike Hardison (6/4) Brian Council (t) (6/5)	Division/Group Supervisor	Phillip Reams (6/7)				
Branch Director		Safety	Andy Meadows (6/4), Don Kuykendall (6/4) Jeff Marshburn (t) (6/6), Keith Jenkins (6/4)				
6. Resources Assigned this Period							
Strike Team/Task Force/ Resource Designator	Leader	Request #	Number Persons	Last Work Day	Drop Off Time	Pick Up Time	
Pump operator	Phillip Ramsey	O-246	1	6/6	1900	0700	
Pump operator	Brad Colie	O-247	1	6/6	1900	0700	
Pump operator	Justin Bennett	O-248	1	6/6	1900	0700	
Pump operator	Brian Mixon	O-242	1	6/6	1900	0700	
Mechanic	Larry Caldwell	O-255	1	6/11	1900	0700	
7. Control Operations							
<ul style="list-style-type: none"> • Monitor pump operations on Div D/E, C, and A/B. • US 264 has re-opened to public traffic. Be Alert. 							
8. Special Instructions							
<ul style="list-style-type: none"> • In case of an emergency utilize Dare County VFD radio (800 mhz) to contact County EOC. • Work together. • Provide adequate lighting prior to shutting down of pumps for servicing. Stay away from canal banks. • Watch for rattlesnakes and bears. Do not throw food on ground or in canal. • Keep smoke exposure to a minimum but do not stage on Hwy 264. • Refer to Safety Message and Medical Plan for more detail. 							
9. Division/Group Communication Summary							
Function	Frequency	System	Channel	Function	Frequency	System	Channel
Command North South		KING NIFC	Command 10 North 11 South 12	Initial Attack		KING NIFC	5
Tactical Div/Group		KING NIFC	3	Air to Ground		KING NIFC	8
Prepared by (Resource Unit Leader) Hans-Christian Rohr, Chris Liv (t)		Approved by (Planning Section Chief) Don Watson		Date 6/1/2011		Time 2030 hrs	

Incident Radio Communications Plan				1. Incident Name: Pains Bay Fire	2. Date/Time Prepared: 6/1/2011 1600hr	3. Operational Period (Date/Time) 6/2/2011
4. Basic Radio Channel Utilization						
System/Cache	Channel	Function	Frequency/Tone	Assignment	Remarks	
NCDNR	CH 1	Tac 1	RX 151.400W TX 151.400W tone 136.5	Water Handling Group		
NCDNR	CH 2	Tac 2	RX 151.460W TX 151.460W tone 136.5	Div D,E,C,F		
NCDNR	CH 3	Tac 3	RX 151.310W TX 151.310W tone 136.5	Structure Protection Div-M		
NIFC	CH 4	Tac 4	RX 168.050N TX 168.050N	Div. A,B		
NIFC	CH 5	Tac 5	RX 168.200N TX 168.200N	Initial Attack, Div G, Div N	I A	
NIFC	CH 6	Tac 6	RX 168.600N TX 168.600N	Div H, Div-O, Div I		
	CH 7					
NIFC	CH 8	US FWS Air to Ground	RX 171.575N TX 171.575N tone 131.8	Fire Line		
NIFC	CH 9	TAC 9	RX 168.350N TX 168.350N	Fire Line TAC		
NCDNR	CH 10	Stumpy Point CMD Repeater 10	RX 151.325W tone 136.5 TX 159.330W tone 118.8	CMD REPEATER 10		
US FWS	CH 11	Colombia CMD Repeater 11	RX 172.675N TX 168.500N tone 118.8	RAWS CMD North	North side of Fire Communications	
US FWS	CH 12	Englehart CMD Repeater 12	RX 164.625N TX 163.150N tone 186.2	CMD South	South side of Fire Communications	
US FWS	CH 13	Tac 13	RX 162.2375N TX 162.2375N tone 156.7			
	CH 14					
Air to Ground	CH 15	Air to Ground Secondary	RX 169.925N TX 169.925N			
AIR GRD	CH 16	AIR GUARD	RX 168.625N TX 168.625N Tone 110.9	Emergency contact with Aircraft		
Communications		Communications Unit	252-903-1701 cell 252-473-1241 office	Paige Tart		
ICS 205	Prepared By (Communications Unit Leader): Paige Tart					

MEDICAL PLAN	1. Incident Name	2. Date Prepared	3. Time Prepared	4. Operational Period							
	Pains Bay Fire	06/01/11	1730	06/02/11 Day/Night							
5. Incident Medical Aid Station											
Medical Aid Stations		Location			Paramedics Yes No						
Dare County Parks and Recreation Bldg (0900-2030hrs)		410 Airport Road Manteo, NC				X					
Stumpy Point VFD (0730-0830hrs)		Stumpy Point				X					
Robert Wade EMT (0800-2000hrs) 804-387-6188		Line EMT Staged @ Navy Shell & Long Curve Rd				X					
6. Transportation											
A. Ambulance Services											
Name		Address		Phone		Paramedics Yes No					
Dare County EMS Station #8		6677 Hwy 64 Business, Manns Harbor, NC		Dare Central (911)		X					
Dare County Med Flight		1078 Driftwood Dr., Manteo, NC		911		X					
B. Incident Ambulances											
Name		Location			Paramedics Yes No						
7. Hospitals											
Name		Address		Travel Time Air Ground		Phone		Helipad Yes No		Burn Center Yes No	
Outer Banks Hospital		Mile Post 14, 4800 S. Croatan Hwy Nags Head, NC Latitude: N 35° 56' 20.33" Longitude: W 75° 45' 5.89"		15 30		(252) 449-4500		X			
Sentara Norfolk General Hospital		Norfolk, VA TRAUMA BURN CENTER		30 90		(757) 388-3000		X		X	
8. Medical Emergency Procedures											
<p>**FOR CRITICAL EMERGENCIES** Step 1. Report all injuries and illnesses to the closest DIVS. DIVS will notify the Line EMT and ICP Communications, and include the extent of the injury and transportation needed. Do not use patient's name on the radio. A medical emergency should be declared over the radio immediately. All radio traffic will be kept to a minimum so emergency procedures can proceed uninhibited. Step 2. ICP Communications will notify Dare Central Dispatch (911) and MEDL. Safety will be notified. Dare County EMS will respond and determine the appropriate treatment, transportation and facility needed. If ground transportation is determined, assign personnel to meet the ambulance at a location that is easily accessible to lead them to the site of the injured. If patient is transported to meet EMS personnel need to remain with patient until EMS has arrived. Line EMT is staged at Navy Shell & Long Curve Rd. to respond to injuries and stabilize patient until EMS personnel arrive. **FOR MINOR EMERGENCIES** Step 1. Patient - Will Advise Their Supervisor Step 2. Patient - Will Receive Care Step 3. Patient Supervisor/Patient - Will Advise Division Supervisor Step 4. Div. Sup./Patient Supervisor- Will Document Incident On 214 Step 5. Div. Sup. /Patient's Supervisor - Will Advise The Medical Unit Leader At The End Of Each Shift Of ANY Illness or Injury And Of ANY Medical Care Given.</p> <p>**If transportation is needed it will be arranged by MEDL.**</p> <p>Nighttime Operations: Communicate all emergency medical needs directly to Dare County Emergency Communications via 800mhz radio furnished by NCDNR Dare County Ranger, and contact Safety Officers Andy Meadows 252-229-0160 or Don Kuykendall 919-218-9505 and Jimmy Halliburton MEDL (T) 828-292-6503.</p> <p><u>ANY INJURY OR ILLNESS IN WHICH ANY TYPE OF CARE IS GIVEN WILL BE DOCUMENTED ON THE UNIT'S 214 AND THE MEDICAL UNIT LEADER WILL EITHER RECEIVE A COPY OF THE 214 OR BE ADVISED VERBALLY BY THE DIVISION SUPERVISOR, PATIENT'S SUPERVISOR OR PATIENT AT THE END OF EACH SHIFT.</u></p>											
Prepared by (Medical Unit Leader) Jimmy Halliburton, MEDL(T) / Keith Owens, MEDL						10. Reviewed by (Safety Officer) Jeffrey Marshburn, SOF (T)					

AIR OPERATIONS SUMMARY		PREPARED BY: Walter Bunt / Greg Yates AOBD (T)		PREPARED DATE/TIME: 6/01/2011 1700	
1. INCIDENT NAME Pains Bay Fire		2. OPERATIONAL PERIOD DATE: 6/02/2011		START TIME: 0800 END TIME: 2000 SUNRISE: 0547 SUNSET: 2014	
3. REMARKS (Safety Notes, Hazards, Air Operations Special Equipment, etc.) -BE ALERT FOR HIGH WINDS AND TURBULANCE -NOTE THAT SOME TOWERS ARE NOT MARKED ON SECTIONAL MAPS. TOWERS COULD BE UP TO 2500 FEET TALL -ALL FIREFIGHTING AIRCRAFT NEED TO SQUAWK 1255. FLY WITH LIGHTS ON. -HEADS UP WHEN PERFORMING WATER DROPS AROUND CREWS ON THE GROUND -MAINTAIN CLEAR COMMUNICATIONS -GROUND PERSONNEL SHOULD STAY CLEAR OF HELICOPTER DEPARTURE PATHS FROM DIP SITES Safety Before Mission Navy Dare Range will be performing air operations in the key hole @ 4000' MSL beginning 5/19 Air Force Dare Range will be hot down to 500' MSL west of longitude 75° 52.0' W beginning 6/1		4. MEDEVAC A/C: Dare County Med Flight		5. TFR: 1/2182 A-22 3100' MSL	
6. PERSONNEL		7. FREQUENCIES		8. FIXED WING # Available/ Type/ Make-Model/FAA N# / Bases	
AOBD: Walter Bunt	Phone	AM	FM	Heavy Air Tankers Available Through SACC-678-320-3012	
AOBD (T) Greg Yates	530-921-3435	123.125		ALLIGATOR RIVER DISPATCH 252-473-1744 X 21	
ASGS: Scott Plue	828-230-9101	122.425		Olive Jones A/C 252-473-1840	
ATGS: Bill Palmer	208-661-6619			Air Force Tower 252-473-1721	
ATGS: Rob Bickerstaffe	828-273-9255			Navy Tower 252-473-2201	
HLC0: NONE	828-989-1314			252-473-2720	
			Rx: 171.575 N Tx: 171.575 N Tone 131.8	Engelhart loading crew: Bobby Jones 252-526-1472	
			169.925N	Engelhart Airstrip: N35 33.74' X W75 57.31' Edenton Airstrip: N36 01.72 X W76 34.19' Currituck Airstrip: N36 23.94' X W76 0.98'	
HEB1: Mike Maguire	828-775-1871		Rx:	ATGS Aircraft Location: MQI N11AR A-11	
			COMMAND RPT SEE ICS 205	S.E.A.T.-S- Available @ 1000, first dispatch from Kinston - 252-520-2402 Kinston Operations Duty Officer- John Willis Order through Alligator Dispatch	
			DECK FREQ:		
			FOR ENTERING DARE BOMBING RANGE		
DARE BOMBING RANGE:			122.900		

9. HELICOPTERS (Use Additional Sheets As Necessary)													
FAA N#	TY	MAKE/MODEL	BASE	AVAIL	START	REMARKS	FAA N#	TY	MAKE/MODEL	BASE	AVAIL	START	REMARKS
N161KA	A-26	1	K-Max	MQI	0800	Todd Tollefsrud 509-669-0970	N2HX	A-25	Bell 407	Pains HB	0830	0830	Persephone Thompson 989-305-1223
N905CH	A-39	1	Sikorsky S-61	MQI	0800	Mark Carter 336-302-0342	N894HA	A-57	Bell 206	Pains HB	0830	0830	Tom Kennedy 912-308-6036

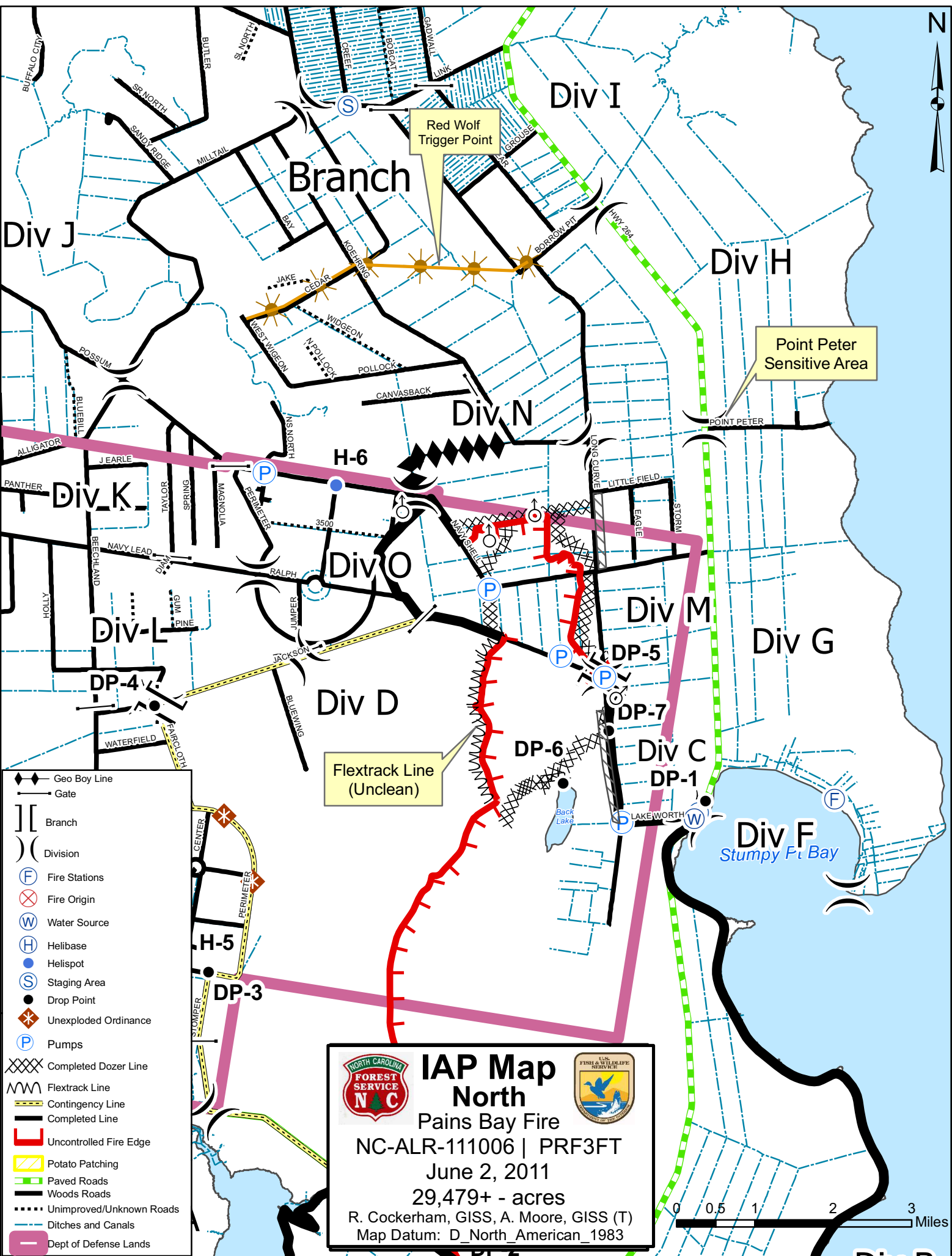
PAINS BAY FIRE CONTACT LIST June 1, 2011

Name	Position	Phone
COMMAND		
Hildreth, Reid	ICT2	252-903-0076
Howard, John	ICT2 (t)	919-801-4167
Steltz, Diane	PIO2	919-444-3894
Thompson, Gary	LOFR	910-334-0028
Kuykendall, Donald	SOF2	919-218-9505
Meadows, Andy	SOF2	252-229-0160
Jenkins, Keith	SOF2	828-989-8060
AGENCY ADMINISTRATORS		
Pate, Greg	NCDFR	252-560-5018
Byrant, Mike	FWS Project Leader	252-216-7505
AGENCY REPRESENTATIVES		
Del Grosso, Shane	FWS	605-354-3226
Lanier, Scott	FWS Dep. Proj Leader	252-216-7506
Crews, Tom	FWS	252-475-4269
Reid, Dana	IBA	541-215-0420
Czernik, Helen	IBA(t)	252-475-8339
Strawser, Bonnie	PIO2	252-216-8667
Stewart, Dennis	FWS	252-473-1131x231
Shackelford, Rob	NCDFR	252-216-5271
		252-216-8800 home
		252-473-2531 office
Christopher, Ed	NCDFR D-13	252-542-0119
COOPERATORS		
Price, RD	Chief, Stumpy Pt FD	252-216-7146
Price, Curtis	Dep. Chief, Stumpy Pt FD	252-216-7094 cell
		252-475-1040 home
Sanderson, Sandy	Emergency Mgmt Coord	252-473-8326
Doughtie, Doug	Dare County Sheriff	252-473-3444
Joe Lafferty	USAF	252-216-8751 cell
		252-473-1906 home
Lt. Cmdr. Marty Hill	US Navy	757-433-1336
Alligator River NWR	Office	252-473-1131
PLANS		
Watson, Don	PSC2	910-334-0033
Register, Dennis	PSC2	252-229-0165
Rohr, Hans-Christian	RESL	910-874-2971
Liv, Chris	RESL (t)	252-567-0830
Wambaugh, Jeanne	SCKN (t)	814-203-7596
Bost, Mark	SITL	919-545-4499
Petruncio, Mike	FOBS	252-312-4371
Rousseau, Mark	FOBS	207-446-6526
Cockerham, Richard	GISS	828-292-4575
Moore, Alan	GISS (t)	919-218-1714
Brown, Lloyd	FBAN	252-619-4481
Curcio, Gary	THSP	919-810-5623

Name	Position	Phone
OPERATIONS		
Burwell, Lee	OSC2	919-218-4263
Hardison, Mike	OSC2	910-770-0810
Banks, Ferrell	OPBD Branch 1	704-616-6439
Humphries, Marshall	OPBD (t) Branch 2	919-218-6402
Riggs, Greg	DIVS A,B	252-229-1438
Elam, Brian	DIVS C,D,F	336-207-3058
Lathrop, Kerry	DIVS M	828-508-1349
Montague, Rob	DIVS M	919-691-2227
Winslow, Mike	DIVS N	919-631-7582
Gibby, Scott	DIVS O	540-622-3507
Gibbs, Marshall	DIVS O (t)	252-542-9658
Hinson, Mike	Structural Protect. Grp.	910-874-2621
Black, Rodney	Water Handling Grp.	252-813-2632
Reams, Phillip	DIVS Night	336-504-4297
AIR OPERATIONS		
Walter Bunt	AOBD	530-921-3435
Yates, Greg	AOBD (t)	828-230-9101
Palmer, Bill	ATGS	828-273-9255
Plue, Scott	ASGS	208-661-6619
Maguire, Mike	HEB1	828-775-1871
FINANCE		
Andres, Dave	FSC2	919-218-4997
Chellburg, Richard	PROC	336-239-1442
Lawrence, Tracy	TIME	252-333-5626
Myers, Ron	COST	919-902-1842
Kinghorn, Jennifer	EQTR	919-601-3861
Baker, Susan	PTRC	252-542-0654
Hinz, Kurt	COMP	507-696-3669
LOGISTICS		
Cleland, Troy	LSC2	252-229-1997
Shidal, Travis	ORDM	704- 473-0430
Berg, Ned	SPUL	252-229-0103
Logan, Jamie	RCDM	828-413-2508
Tart, Paige	COML	252-903-1701
Collins, Bill	COMT	910-540-1833
Sharpton, Chris	RADO	828-989-7000
Aldridge, Jim	FACL	919-636-2471
Hubacker, Chris	FDUL	252-526-1470
Berry, Jerol	GSUL	252-741-0229
Huggins, Michael	EQPM	828-691-1683
Evans, Martin	EQPM	252-945-0607
Owens, Keith	MEDL	919-548-5830
Halliburton, Jimmy	MEDL(t)	828-292-6503
Clark Wade	Line EMTP	804-387-6188
Riner, Jimmy	SECM	270-703-0136

ICP Communications 252-473-1241
ICP Fax 252-473-1162

ICP Finance 252-473-1237
ICP Demob 252-473-1137



- ◆ Geo Boy Line
- Gate
- || Branch
-) Division
- (F) Fire Stations
- (X) Fire Origin
- (W) Water Source
- (H) Helibase
- (●) Helispot
- (S) Staging Area
- (●) Drop Point
- (*) Unexploded Ordinance
- (P) Pumps
- XXXX Completed Dozer Line
- ~ Flextrack Line
- Contingency Line
- Completed Line
- ┌ Uncontrolled Fire Edge
- ▨ Potato Patching
- ▬ Paved Roads
- ▬ Woods Roads
- ⋯ Unimproved/Unknown Roads
- Ditches and Canals
- Dept of Defense Lands

IAP Map North

Pains Bay Fire

NC-ALR-111006 | PRF3FT

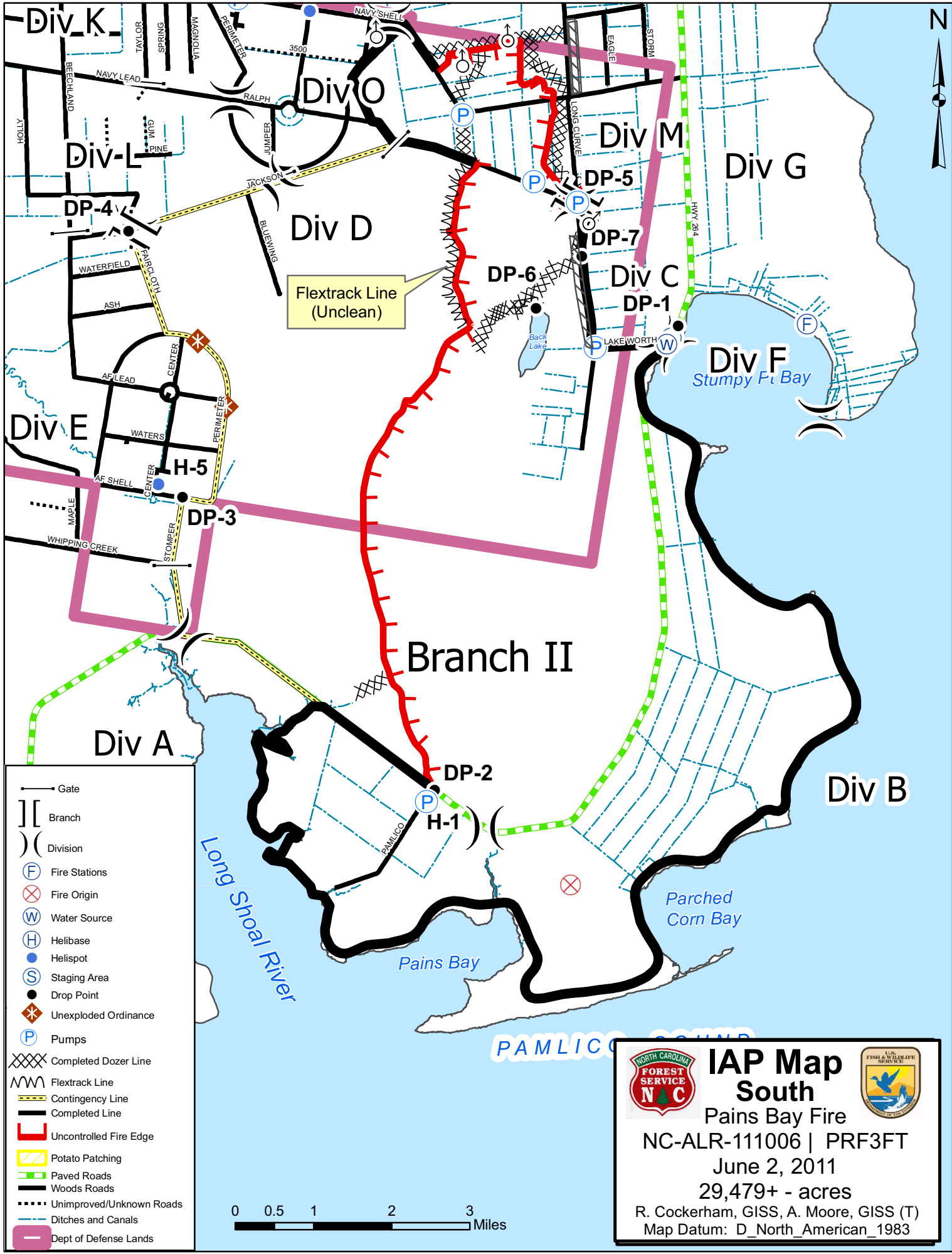
June 2, 2011

29,479+ - acres

R. Cockerham, GISS, A. Moore, GISS (T)

Map Datum: D_North_American_1983





- Gate
- [] Branch
- () Division
- (F) Fire Stations
- (X) Fire Origin
- (W) Water Source
- (H) Helibase
- (●) Helispot
- (S) Staging Area
- (●) Drop Point
- (*) Unexploded Ordinance
- (P) Pumps
- XXXX Completed Dozer Line
- ~ Flextrack Line
- - - Contingency Line
- Completed Line
- Uncontrolled Fire Edge
- ▨ Potato Patching
- Paved Roads
- Woods Roads
- ... Unimproved/Unknown Roads
- - - Ditches and Canals
- Dept of Defense Lands



IAP Map South

Pains Bay Fire

NC-ALR-111006 | PRF3FT

June 2, 2011

29,479+ - acres

R. Cockerham, GISS, A. Moore, GISS (T)

Map Datum: D_North_American_1983

ERROR: undefinedresource
OFFENDING COMMAND: findresource

STACK:

/0
/CSA
/0
/CSA
-mark-