

PAINS BAY FIRE

NC-ALR-111006
PRF3FT (1502)



Incident Action Plan

Monday

June 6, 2011

0700-1900 hrs



INCIDENT OBJECTIVES	1. INCIDENT NAME PAINS BAY FIRE	2. DATE PREPARED 6/5/2011	3. TIME PREPARED 2130
4. OPERATIONAL PERIOD (DATE/TIME) Monday, June 6, 2011 0700 to 1900 hrs			
5. GENERAL CONTROL OBJECTIVES FOR THE INCIDENT (INCLUDE ALTERNATIVES)			
<p><u>Control Objectives</u></p> <ol style="list-style-type: none"> 1. Provide for the safety of firefighters and general public by adherence to the 10 standard fire orders, 18 watch-out situations, in addition to maintaining direct and clear communications with all incident personnel and the general public. 2. Keep fire contained west of US Highway 264, south of US Highway 64 and east of Milltail Creek. 3. Coordinate with Dare Emergency Mangement Coordinator to initiate evacuation if fire threatens the village of Stumpy Point. 4. Continue to monitor traffic conditions on US Hwy 264. Maintain 24 hours LE presence at designated areas to provide for immediate closure, if needed, for escaped fire. 5. Make appropriate notifications to NCDOT, EM, NC State Highway Patrol, USFWS and D13 operations for predicted "superfog" or dense smoke events. 6. Continue to implement written Water Handling Plan. 7. Ensure that suppression & containment strategies on FWS property follow minimum impact suppression tactics. Escalation of tactics should consider amount of progress being made with current tactics, and the likelihood of those tactics being successful. <p><u>Management Objectives</u></p> <ol style="list-style-type: none"> 1. Keep general public & local officials in affected counties, as well as incident stake holders informed of fire status through situation updates and personal contacts. 2. Provide for accurate cost tracking and documentation of incident in accordance with IBH (Incident Business Handbook) procedures. 3. Emphasize cost containment through continual assessment of personnel and resource needs to provide correct staffing of incident. 4. Provide for a safe, smooth and efficient Transition and Transfer of Command with the Hendricks/ Willis team. 			
6. WEATHER FORECAST FOR OPERATIONAL PERIOD			
Partly Cloudy, 0% change of rain, 87°, NE5-6, RH 38 %, LAL 4, ADI fair, LVORI 1, BC 4			
7. GENERAL SAFETY MESSAGE			
See Attached Tailgate Safety Briefing Sheet. Supervisors sign after completing & return to Documentation Unit.			
8. ATTACHMENTS (X IF ATTACHED)			
<input checked="" type="checkbox"/> ORGANIZATION LIST (ICS 203)	<input checked="" type="checkbox"/> MEDICAL PLAN (ICS 206)	<input checked="" type="checkbox"/> SAFETY MESSAGE	
<input checked="" type="checkbox"/> ASSIGNMENT LIST (ICS 204)	<input checked="" type="checkbox"/> INCIDENT MAP	<input checked="" type="checkbox"/> PHONE LIST	
<input checked="" type="checkbox"/> COMMUNICATIONS PLAN (ICS 205)	<input checked="" type="checkbox"/> AIR OPS SUMMARY (ICS 220)	<input checked="" type="checkbox"/> UNIT LOG (ICS 214)	
9. PREPARED BY (PLANNING SECTION CHIEF)	10. APPROVED BY (INCIDENT COMMANDER)		

ORGANIZATION ASSIGNMENT LIST		9. Operations Section	
1. Incident Name: PAINS BAY FIRE		Field Ops	Lee Burwell (6/6)
		Planning Ops	Michael Hardison (6/6)
		a. Branch I	
2. Date Prepared 6/5/11	3. Time 1700	Branch Director	Ferrell Banks (6/6)
4. Operational Period Monday, 6/6/11 0700-1900		Division/Group	L Brian Elam (6/6)
5. Command and General Staff		Division/Group	M Unstaffed
Incident Commander	Reid Hildreth (6/6)	Division/Group	N David Lafon (6/10)
Deputy	John Howard (t) (6/6)	Division/Group	O Scott Gibby (6/7)
Safety Officers	A. Meadows (6/6), J. Marshburn(t) (6/6), D. Kuykendall (6/6), C. Stanton (6/18)	ICT4	Initial Attack Dwight Newman (6/16)
		Division/Group	
		b. Branch II	
Liaison Officer	Gary Thompson (6/8)	Branch Director	Marshall Humphries (t) (6/6)
Information Officer	Susan Heisey (6/8)	Division/Group	A,B Rob Montague (6/8)
6a. Agency Administrators		Division/Group	C,D,F Unmanned
US FWS	Mike Bryant, Scott Lanier	Division/Group	E Kerry Lathrop (6/6)
NC DFR	Greg Pate	Division/Group	
6b. Agency Representatives		Division/Group	
US FWS	Shane Del Grosso	c. Branch III	
NC DFR D-13	Ed Christopher	Division/Group	
US FWS	Bonnie Strawser	Division/Group	
Dare EM	Sandy Sanderson	Division/Group	
Stumpy Pt. FD	Curtis Price	d. Branch IV	
US Navy	Lt. Cmdr. Marty Hill	Branch Director	
Interim Range Mgr	Don Heaton	Division/Group	
US Air Force	Joe Lafferty	Division/Group	
7. Planning Section		Division/Group	
Chief	Don Watson (6/6)	Division/Group	
Deputy	Dennis Register (6/6)	Division/Group	
Resources Unit	Hans Rohr (6/6)	Division/Group	
	Chris Liv (t) (6/6)		
Status Check-In	Jeanne Wambaugh (t) (6/10)	e. Other Groups	
Situation Unit	Mark Bost (6/6)	Water Handling Group	Aaron Gay (6/12)
GISS	Richard Cockerham (6/6)	Night Shift	Phillip Reams (6/7)
	Andrew Bailey (6/13)	San Dimas TDC	Robert Manwaring
Field Observers	Mike Petruncio (6/6)	f. Air Operations Branch	
	Mark Rousseau (6/11)	Air Ops Branch Directors	Walter Bunt (6/11) Greg Yates (t) (6/6)
Fire Behavior	Lloyd Brown (6/8)	Air Tactical Grp Supervisor	Rob Bickerstaff (6/7)
Smoke Analysts	Gary Curcio (6/8)	Air Tactical Grp Supervisor	Donnie Harris (t) (7/3)
Demobilization Unit	Ronald Rockis (6/9)	Air Support Grp Supervisor	Mike Maguire (6/9)
Documentation Unit	Jim Slye (6/6)	Helibase Manager	Tom Kennedy (6/24)
8. Logistics Section		10. Finance Section	
Chief	Troy Cleland (6/6)	Chief	Dave Andres (6/6)
Supply Unit	Ned Berg (6/6)	Procurement Unit	Richard Chellberg (6/6)
Receiving & Dist	Jamie Logan (6/6)	Procurement Unit	Sheila Head (6/15)
Ground Support Unit	Jerol Berry (6/6)	Time Unit	Tracy Lawrence (6/6)
Facilities Unit	Jim Aldridge (6/6)	Cost Unit	Ron Myers (6/8)
Food Unit	Chris Hubacker (6/6)	Equip/Pers Time Recorder	Susan Baker
Ordering Manager	Travis Shidal (6/6)	Incident Business Advisors	Helen Czernik (7/5) Dede Domingos (6/15)
Communications Unit	Paige Tart (6/6)		Computer Specialist
Communications Tech	Bill Collins (6/6)	Prepared by: Hans Rohr, RESL Chris Liv, RESL (t)	
Radio Operator	Chris Sharpton (6/6)		
Equipment Managers	Evans (6/7), Huggins (6/6) Sherwood (t) (6/5), Hurdle (t) (6/9)		
Medical Unit	Jimmy Haliburton (6/6)		
Security Unit	Jimmy Riner (6/8)		

Tailgate Briefing

Pains Bay Fire
Lloyd Brown FBAN

Fire Behavior Forecast
Time and Date Forecast Issued: 1900 Sunday 6/5/ 2011

For: Monday 6/6/2011

Weather Summary: A Cold Front passed through the area last night. High pressure will build across the region behind the front through the middle of next week. A weak cold front will sag into the region early next weekend.

Today will be Sunny

High temp 79, Minimum RH 66%. Wind - East 7-10 mph.
1 hour fuel moisture – 8-11 %.

Time	0800	1200	1400	1600
Temp	72	76	77	76
RH	81%	69%	67%	69%
Wind	NE6G10	NE-7G10	NE-8G15	E-8G15

Night Weather: Clear. SE winds 5-8 in the evening becoming light and variable.

1800 Temp 75 RH 69 Wind E7G10
2200 71 76 SE-5
0200 69 81 S-2
0400 69 81 SW-2

Local Thresholds – Watch Out! Wind speed over 15mph, RH less than 25, Temperature over 90

General Fire Behavior: The fire escaped containment on the southwest side Saturday June 4th in Division Alpha and ran north towards the Air Force Bomb Range forcing a burnout of an entire 11,000 acre block.

Specific Fire Behavior

Alpha, Bravo, Echo, Lima, Oscar—All of these divisions with the exception of Bravo were involved in the recent burnout and contain a lot of heat in the interior and along the perimeter. Expect active burning in remaining green fuel and reburn in browned and cured fuel. East -Northeast winds will put pressure on Faircloth Road, the Air Force Bomb Range and Highway 264. Watch for spotting on the off side of these roads.

Charlie, Delta, Foxtrot – Remaining ground fire on these three divisions will be active today Expect reburn in unburned cured fuels.

Mike, November - These divisions contain ground fire in the interior and along the perimeter. Any remaining green fuels will continue to burn and cured but unburned fine fuels will also reburn causing flare-ups. Lofting embers along perimeters may cause spotting into unburned fuels. Shading of fuels and partial to full sheltering from the wind should contribute to containment efforts. The fire should be active today with the forecasted weather conditions.

Fuel Model	ROS chains/hr	Flame Length	Spot Distance – Miles	PIG
<u>Sh9 - Very High Load Humid Climate shrub</u>	26 sheltered* 49 unsheltered*	13 sheltered 18 unsheltered	.2 .2	26 % 42%

KBDI....539

***sheltered = pocosin fuels with heavy pine overstory**

***unsheltered – pocosin fuels with little overstory cover**

ERC...39 is a number related to the available energy (BTU) per unit area (square foot) within the flaming front at the head of a fire. As live fuels cure and dead fuels dry, the ERC will increase and can be described as a build-up index.

Controllability- Indirect attack should be used if fires become established. Aircraft should always be utilized in the containment effort.

HEALTH AND SAFETY MESSAGE

Maintain Situation Awareness in Order to Anticipate Needed Actions!!!

INCIDENT: Pains Bay Fire	DATE: 6/6/11	TIME: 0700-1900
--------------------------	--------------	-----------------

Signature:

Major Hazards and Risks:

Transition – Give good information to incoming team members. Stay engaged throughout the operational period. Do not disengage your counterpart until you have given a full hand off and they are clear on assignment.

DRIVING - Drive defensively. Use passenger as a lookout, navigator, and backing guide. Obey speed limits. Use headlights and seatbelts. 10 MPH in very dusty road conditions. Clean your windows. Watch out for Bears!

FIRING OPERATIONS – Ensure all resources are briefed prior to starting firing operation. LCES should be in place and reevaluated during operation.

AIR OPERATIONS- Stay away from bucket and retardant drop areas. Use air to ground frequency when communicating with aircraft. Stay safe distance from drop zones of tankers and helicopters.

HYDRATION/HEAT STRESS - Temperatures are on the rise. The body shuts down the thirst mechanism when you're dehydrated, therefore, be sure to drink a lot, before you get thirsty. 4:1 water to Powerade or Gatorade.

FIRE BEHAVIOR – Maintain situational awareness, follow 10 Standard Orders, recognize / mitigate the 18 Watch Out Situations, and apply LCES. Know the fire weather forecast. Monitor conditions.

Pumps - Operators and Mechanics should be the only personnel near pumps. PTOs and exposed drive belts can injure you. Canal banks can collapse. Noise levels can be high. Shut down pumps to service.

SNAGS – Stay out of area, essential fire line personnel only. Look at root system before working/parking. Refer to IRPG pg. 20-21.

Observe Human Behavior as Well as Fire Behavior!!!



3. SAFETY ZONES AND ESCAPE ROUTES NOT IDENTIFIED

DIVISION ASSIGNMENT LIST			1. Branch Branch I		2. Division/Group Division L (page 1 of 2)			
3. Incident Name PAINS BAY FIRE			4. Operational Period Date: 6/6/2011 Time: 0700-1900hrs					
5. Operations Personnel								
Operations Section Chiefs		Lee Burwell (6/6) Mike Hardison (6/6)		Division/Group Supervisor		Brian Elam (6/6)		
Branch Director		Ferrell Banks (6/6)		Safety		Andy Meadows (6/6), Don Kuykendall (6/6) Jeff Marshburn (t) (6/6), Charles Stanton (6/18)		
6. Resources Assigned this Period								
Strike Team/Task Force/ Resource Designator		Leader		Request #	Number Persons	Last Work Day	Drop Off Time	Pick Up Time
ENG6 Strike Team NCS#7				E-517	11	6/12	0700hrs	1900hrs
STEN		R. Goodman						
ENG6 Engine 12-30		R. Ward / R. Lamm						
ENG6 Engine 12-56		J. Icard / J. Eudy						
ENG6 Engine 2-51		C. Moss / M. Crouse						
ENG6 Engine 9-40		H. Phillips / J. Carver						
ENG6 Engine 9-60		B. Reece / M. Hooper						
Flex Trac Strike Team #2								
Strike Team Leader		D. Foco		O-280	1	6/19	0700hrs	1900hrs
Flex Trac DBR 13x64		Staffed by DBR			1		0700hrs	1900hrs
Flex Trac DBR 13x65		Staffed by DBR			1		0700hrs	1900hrs
7. Control Operations								
<ul style="list-style-type: none"> Tractor plows reinforce control lines and construct pre-suppression lines. Engines mop-up from burn-out on Ralph Rd to Jackson Rd. Engines will assist with irrigation on Ralph Rd and fuel break. Assist water group as needed. Coordinate resources with Div N as needed. 								
8. Special Instructions								
<ul style="list-style-type: none"> All supervisors ensure that personnel maintain safe distances during all air operations. Limit use of foam within 300 ft of any water source. US 264 is closed again from Stomper Rd. north to Stumpy Point. 								
9. Division/Group Communication Summary								
Function	Frequency	System	Channel	Function	Frequency	System	Channel	
Command North South		KING NIFC	Command 10 North 11 South 12	Initial Attack		KING NIFC	5	
Tactical Div/Group		KING NIFC	6	Air to Ground		KING NIFC	8	
Prepared by (Resource Unit Leader) Hans-Christian Rohr, Chris Liv (t)		Approved by (Planning Section Chief) Don Watson			Date 6/5/2011		Time 2030 hrs	

DIVISION ASSIGNMENT LIST		1. Branch Branch I		2. Division/Group Division L (Page 2 of 2)			
3. Incident Name PAINS BAY FIRE		4. Operational Period Date: 6/6/2011 Time: 0700-1900hrs					
5. Operations Personnel							
Operations Section Chiefs	Lee Burwell (6/6) Mike Hardison (6/6)	Division/Group Supervisor	Brian Elam (6/6)				
Branch Director	Ferrell Banks (6/6)	Safety	Andy Meadows (6/6), Don Kuykendall (6/6) Jeff Marshburn (t) (6/6), Charles Stanton (6/18)				
6. Resources Assigned this Period							
Strike Team/Task Force/ Resource Designator	Leader	Request #	Number Persons	Last Work Day	Drop Off Time	Pick Up Time	
TPL2 NCS D-13 Strike Team		E-516	5	6/11	0700hrs	1900hrs	
STPL	T. Whitaker (off 6/11-6/12)						
TPL2 13x51	B. Phellps (off 6/9-6/10) / J. Swain						
TPL2 13x61	B. Grubbs (off 6/9-6/11)						
Marshmaster w/ mower FWS	E. Meekins/R. Nordsvan		2		0700hrs	1900hrs	
(6) 6" Water Pumps		E-338, E-339, S-5191, S-5192, S-5151, S-5352	0				
(3) 2.5 " Pumps			0				
Mop-up Truck NCS		E-359	0				
(2) Mop-up trailers NCS		E-239, E-240	0				
7. Control Operations							
<ul style="list-style-type: none"> Tractor plows reinforce control lines and construct pre-suppression lines. Engines mop-up from burn-out on Ralph Rd to Jackson Rd. Engines will assist with irrigation on Ralph Rd and fuel break. Assist water group as needed. Coordinate resources with Div N as needed. 							
8. Special Instructions							
<ul style="list-style-type: none"> All supervisors ensure that personnel maintain safe distances during all air operations. Limit use of foam within 300 ft of any water source. US 264 is closed again from Stomper Rd. north to Stumpy Point. 							
9. Division/Group Communication Summary							
Function	Frequency	System	Channel	Function	Frequency	System	Channel
Command North South		KING NIFC	Command 10 North 11 South 12	Initial Attack		KING NIFC	5
Tactical Div/Group		KING NIFC	6	Air to Ground		KING NIFC	8
Prepared by (Resource Unit Leader) Hans-Christian Rohr, Chris Liv (t)		Approved by (Planning Section Chief) Don Watson		Date 6/5/2011		Time 2030 hrs	

DIVISION ASSIGNMENT LIST		1. Branch Branch I	2. Division/Group Division M				
3. Incident Name PAINS BAY FIRE		4. Operational Period Date: 6/6/2011 Time: 0700-1900hrs					
5. Operations Personnel							
Operations Section Chiefs	Lee Burwell (6/6) Mike Hardison (6/6)	Division/Group Supervisors					
Branch Director	Ferrell Banks (6/6)	Safety	Andy Meadows (6/6), Don Kuykendall (6/6) Jeff Marshburn (t) (6/6), Charles Stanton (6/18)				
6. Resources Assigned this Period							
Strike Team/Task Force/ Resource Designator	Leader	Request #	Number Persons	Last Work Day	Drop Off Time	Pick Up Time	
Unstaffed							
7. Control Operations							
<ul style="list-style-type: none"> Monitor fire perimeter for hot spots and spot-overs. 							
8. Special Instructions							
<ul style="list-style-type: none"> All supervisors ensure that personnel maintain safe distances during all air operations. Identify escape routes if Long Curve Road is compromised. Limit use of foam within 300 ft of any water source. US 264 is closed again from Stomper Rd. north to Stumpy Point. Ensure finance is advised on time spend on FWS Lands. Assess potential for snag hazards. Flag off snags and mitigate where possible. 							
9. Division/Group Communication Summary							
Function	Frequency	System	Channel	Function	Frequency	System	Channel
Command North South		KING NIFC	Command 10 North 11 South 12	Initial Attack		KING NIFC	5
Tactical Div/Group		KING NIFC	3	Air to Ground		KING NIFC	8
Prepared by (Resource Unit Leader) Hans-Christian Rohr, Chris Liv (t)		Approved by (Planning Section Chief) Don Watson		Date 6/5/2011		Time 2030 hrs	

DIVISION ASSIGNMENT LIST			1. Branch Branch I		2. Division/Group Division N			
3. Incident Name PAINS BAY FIRE			4. Operational Period Date: 6/6/2011 Time: 0700-1900hrs					
5. Operations Personnel								
Operations Section Chiefs		Lee Burwell (6/6) Mike Hardison (6/6)		Division/Group Supervisors		David Lafon (6/10)		
Branch Director		Ferrell Banks (6/6)		Safety		Andy Meadows (6/6), Don Kuykendall (6/6) Jeff Marshburn (t) (6/6), Charles Stanton (6/18)		
6. Resources Assigned this Period								
Strike Team/Task Force/ Resource Designator		Leader		Request #	Number Persons	Last Work Day	Drop Off Time	Pick Up Time
Task Force #1					6		0700 hrs	1900 hrs
TFLD		K. Griffin		O-272		6/13		
T6 ENG VAVAF Engine 11		C. Ramey		E-6		6/7		
WAT3 NCS 13E1		M. Johnson		E-385, O-249		6/7		
TPL2 D-4 Strike Team				E-515	4	6/11	0700 hrs	1900 hrs
STPL		W. Bell						
TPL2 4x22		J. Hathaway						
TPL2 4x41		T. Buck						
7. Control Operations								
<ul style="list-style-type: none"> Mop-up control line north of Navy Shell Rd. Install irrigation along fuel break line from Perimeter Rd to Ralph Rd. Utilize engines for mop-up operations. 								
8. Special Instructions								
<ul style="list-style-type: none"> All supervisors ensure that personnel maintain safe distances during all air operations. Limit use of foam within 300 ft of any water source. Identify escape routes and safety zones. Ensure Finance is advised at end of shift with hours worked on USFWS land. Assess potential for snag hazards. Flag off snags and mitigate where possible. US 264 is closed again from Stomper Rd. north to Stumpy Point. 								
9. Division/Group Communication Summary								
Function	Frequency	System	Channel	Function	Frequency	System	Channel	
Command North South		KING NIFC	Command 10 North 11 South 12	Initial Attack		KING NIFC	5	
Tactical Div/Group		KING NIFC	5	Air to Ground		KING NIFC	8	
Prepared by (Resource Unit Leader) Hans-Christian Rohr, Chris Liv (t)		Approved by (Planning Section Chief) Don Watson			Date 6/5/2011		Time 2030 hrs	

DIVISION ASSIGNMENT LIST		1. Branch Branch I		2. Division/Group Division O (Page 1 of 2)			
3. Incident Name PAINS BAY FIRE		4. Operational Period Date: 6/6/2011 Time: 0700-1900hrs					
5. Operations Personnel							
Operations Section Chiefs	Lee Burwell (6/6) Mike Hardison (6/6)	Division/Group Supervisor	Scott Gibby (6/6)				
Branch Director	Ferrell Banks (6/6)	Safety	Andy Meadows (6/6), Don Kuykendall (6/6) Jeff Marshburn (t) (6/6), Charles Stanton (6/18)				
6. Resources Assigned this Period							
Strike Team/Task Force/ Resource Designator	Leader	Request #	Number Persons	Last Work Day	Drop Off Time	Pick Up Time	
ENG6 Strike Team Interagency #1					0700hrs	1900hrs	
STEN	J. Ward	O-278	1	6/12			
ENG6 SC-FMF	Ray / Wyman / Rister	E-13	3	6/6			
ENG6 IL-SHF	Paukert / Hancock / Walker	E-14	3	6/6			
ENG6 VASHP Engine 41		E-9	3				
ENG6 Strike Team NCS#9		E-519	11	6/13	0700hrs	1900hrs	
STEN	J. Stone						
ENG6 Engine	D. White / J. McCall						
ENG6 Engine	G. Jones / W. Hellmuth						
ENG6 Engine 5-71	J. Miller / B. Collier						
ENG6 Engine 5-82	B. Hill / S. Thompson						
ENG6 Engine	B. Maynor / J. Garner						
ENG6 FWS Engine 963	R. Askins / R. Heisey	E-397	2				
7. Control Operations							
<ul style="list-style-type: none"> Tractor plows reinforce control lines and construct pre-suppression lines. Engines complete mop-up between Jackson Rd and Navy Shell Rd. Engines will assist with irrigation on Ralph Rd and fuel break. Assist water group as needed. Coordinate resources with Div N as needed. 							
8. Special Instructions							
<ul style="list-style-type: none"> All supervisors ensure that personnel maintain safe distances during all air operations. Limit use of foam within 300 ft of any water source. US 264 is closed again from Stomper Rd. north to Stumpy Point. 							
9. Division/Group Communication Summary							
Function	Frequency	System	Channel	Function	Frequency	System	Channel
Command North South		KING NIFC	Command 10 North 11 South 12	Initial Attack		KING NIFC	5
Tactical Div/Group		KING NIFC	6	Air to Ground		KING NIFC	8
Prepared by (Resource Unit Leader) Hans-Christian Rohr, Chris Liv (t)		Approved by (Planning Section Chief) Don Watson		Date 6/5/2011		Time 2030 hrs	

DIVISION ASSIGNMENT LIST			1. Branch Branch I		2. Division/Group Division O (Page 2 of 2)			
3. Incident Name PAINS BAY FIRE			4. Operational Period Date: 6/6/2011 Time: 0700-1900hrs					
5. Operations Personnel								
Operations Section Chiefs		Lee Burwell (6/6) Mike Hardison (6/6)		Division/Group Supervisor		Scott Gibby (6/6)		
Branch Director		Ferrell Banks (6/6)		Safety		Andy Meadows (6/6), Don Kuykendall (6/6) Jeff Marshburn (t) (6/6), Charles Stanton (6/18)		
6. Resources Assigned this Period								
Strike Team/Task Force/ Resource Designator		Leader		Request #	Number Persons	Last Work Day	Drop Off Time	Pick Up Time
TPL2 NCS D-7 Strike Team				E-457	5	6/15	0700 hrs	1900 hrs
STPL		S. Sheets						
TPL2 7x31		C. Scott						
TPL2 7x71		T. Rivels						
WAT3 NCS 4E1		D. Butler		E-310	1	6/7	0700hrs	1900hrs
Marsh Master DBR		unstaffed		E-222	0			
THSP		M. Gibbs		O-41	1		0700hrs	1900hrs
Flex Trac Strike Team #1							0700hrs	1900hrs
Flex Trac DBR 13x66				E-460	1			
Flex Trac DBR 13x68				E-461	1			
EMTB		Buster Rodgers		O-257	1	6/11	0700hrs	1900hrs
7. Control Operations								
<ul style="list-style-type: none"> Tractor plows reinforce control lines and construct pre-suppression lines. Engines complete mop-up between Jackson Rd and Navy Shell Rd. Engines will assist with irrigation on Ralph Rd and fuel break. Assist water group as needed. Coordinate resources with Div N as needed. 								
8. Special Instructions								
<ul style="list-style-type: none"> All supervisors ensure that personnel maintain safe distances during all air operations. Limit use of foam within 300 ft of any water source. US 264 is closed again from Stomper Rd. north to Stumpy Point. 								
9. Division/Group Communication Summary								
Function	Frequency	System	Channel	Function	Frequency	System	Channel	
Command North South		KING NIFC	Command 10 North 11 South 12	Initial Attack		KING NIFC	5	
Tactical Div/Group		KING NIFC	6	Air to Ground		KING NIFC	8	
Prepared by (Resource Unit Leader) Hans-Christian Rohr, Chris Liv (t)			Approved by (Planning Section Chief) Don Watson			Date 6/5/2011		Time 2030 hrs

DIVISION ASSIGNMENT LIST		1. Branch Branch I		2. Division/Group Initial Attack Group			
3. Incident Name PAINS BAY FIRE		4. Operational Period Date: 6/6/2011		Time: 0700-1900hrs			
5. Operations Personnel							
Operations Section Chiefs	Lee Burwell (6/6) Mike Hardison (6/6)		Division/Group Supervisors				
Branch Director	Ferrell Banks (6/6)		Safety		Andy Meadows (6/6), Don Kuykendall (6/6) Jeff Marshburn (t) (6/6), Charles Stanton (6/18)		
6. Resources Assigned this Period							
Strike Team/Task Force/ Resource Designator	Leader	Request #	Number Persons	Last Work Day	Drop Off Time	Pick Up Time	
TFLD/ICT4	D. Newman	O-279	1	6/16	0700hrs	1900hrs	
TFLD (t)	J. Black	O-285	1	6/16	0700hrs	1900hrs	
Flex Trac FWS AX4	E. Meekins	E-328, O-166	1		0700hrs	1900hrs	
Flex Trac FWS AX2	J. Swain	E-380, O-82	1		0700hrs	1900hrs	
ENG6 VAVAF Engine 21	G. Norris	E-8	2	6/7	0700hrs	1900hrs	
Geo-boy FWS	FWS		2		0700 hrs	1900 hrs	
7. Control Operations							
<ul style="list-style-type: none"> Resources will provide initial attack for new fire starts on FWS District 1 (Alligator River, Pocosin Lakes, Pungo, Pea Island, Swan Quarter, Mattamuskeet NWR). Resources will be dispatched by FWS through IC D. Newman. Equipment staged at Alligator River Work Center. Geo-boy will mow fuel break south of Borrow Pit Rd to Hwy 264. 							
8. Special Instructions							
<ul style="list-style-type: none"> All supervisors ensure that personnel maintain safe distances during all air operations. Limit use of foam within 100' of any water surface. US 264 is closed again from Stomper Rd. north to Stumpy Point. 							
9. Division/Group Communication Summary							
Function	Frequency	System	Channel	Function	Frequency	System	Channel
Command North South		KING NIFC	Command 10 North 11 South 12	Initial Attack		KING NIFC	5
Tactical Div/Group		KING NIFC	5	Air to Ground		KING NIFC	8
Prepared by (Resource Unit Leader) Hans-Christian Rohr, Chris Liv (t)		Approved by (Planning Section Chief) Don Watson		Date 6/5/2011		Time 2030 hrs	

DIVISION ASSIGNMENT LIST		1. Branch Branch II		2. Division/Group Division A, B			
3. Incident Name PAINS BAY FIRE		4. Operational Period Date: 6/6/2011 Time: 0700-1900hrs					
5. Operations Personnel							
Operations Section Chiefs	Lee Burwell (6/6) Mike Hardison (6/6)	Division/Group Supervisor	Rob Montague (6/9)				
Branch Director	Marshall Humphries (t) (6/6)	Safety	Andy Meadows (6/6), Don Kuykendall (6/6) Jeff Marshburn (t) (6/6), Charles Stanton (6/18)				
6. Resources Assigned this Period							
Strike Team/Task Force/ Resource Designator	Leader	Request #	Number Persons	Last Work Day	Drop Off Time	Pick Up Time	
Structure Protection							
ICT4 / LIASON	R. Shackelford		1		0700hrs	1900hrs	
LOFR/ Deputy Fire Chief	Curtis Price		1		0700hrs	1900hrs	
ENG Stumpy VFD	Available		4		0700hrs	1900hrs	
ENG Manns Harbor VFD			5		0700hrs	1900hrs	
ENG Roanoke Island VFD	Available		4		0700hrs	1900hrs	
Dare County VFD Resources	Available				0700hrs	1900hrs	
7. Control Operations							
<ul style="list-style-type: none"> Patrol for hotspots and mop-up from Stomper Rd along Hwy 264. Be available to execute Stumpy Point Evacuation Plan if identified trigger points are met. Triage and prepare structures for burnout operations in Stumpy Point community. 							
8. Special Instructions							
<ul style="list-style-type: none"> All supervisors ensure that personnel maintain safe distances during all air operations. US 264 is closed again from Stomper Rd. north to Stumpy Point. Pay special attention to road crews repairing guard rails on Hwy. 264; there are smoke and visibility concerns. Mann's Harbor and Roanoke Island VFDs are call-when-needed. Limit use of foam within 300 ft of any water source. 							
9. Division/Group Communication Summary							
Function	Frequency	System	Channel	Function	Frequency	System	Channel
Command North South		KING NIFC	Command 10 North 11 South 12	Initial Attack		KING NIFC	5
Tactical Div/Group		KING NIFC	4	Air to Ground		KING NIFC	8
Prepared by (Resource Unit Leader) Hans-Christian Rohr, Chris Liv (t)		Approved by (Planning Section Chief) Don Watson		Date 6/5/2011		Time 2030 hrs	

DIVISION ASSIGNMENT LIST			1. Branch Branch II	2. Division/Group Division C, D, F			
3. Incident Name PAINS BAY FIRE			4. Operational Period Date: 6/6/2011 Time: 0700-1900hrs				
5. Operations Personnel							
Operations Section Chiefs	Lee Burwell (6/6) Mike Hardison (6/6)		Division/Group Supervisor				
Branch Director	Marshall Humphries (t) (6/6)		Safety		Andy Meadows (6/6), Don Kuykendall (6/6) Jeff Marshburn (t) (6/6), Charles Stanton (6/18)		
6. Resources Assigned this Period							
Strike Team/Task Force/ Resource Designator	Leader		Request #	Number Persons	Last Work Day	Drop Off Time	Pick Up Time
Unstaffed							
7. Control Operations							
<ul style="list-style-type: none"> Monitor and patrol for hotspots and spot-overs. 							
8. Special Instructions							
<ul style="list-style-type: none"> All supervisors ensure that personnel maintain safe distances during all air operations. Limit use of foam within 300 ft of any water source. US 264 is closed again from Stomper Rd. north to Stumpy Point. 							
9. Division/Group Communication Summary							
Function	Frequency	System	Channel	Function	Frequency	System	Channel
Command North South		KING NIFC	Command 10 North 11 South 12	Initial Attack		KING NIFC	5
Tactical Div/Group		KING NIFC	2	Air to Ground		KING NIFC	8
Prepared by (Resource Unit Leader) Hans-Christian Rohr, Chris Liv (t)		Approved by (Planning Section Chief) Don Watson			Date 6/5/2011		Time 2030 hrs

DIVISION ASSIGNMENT LIST			1. Branch Branch II		2. Division/Group Division E			
3. Incident Name PAINS BAY FIRE			4. Operational Period Date: 6/6/2011 Time: 0700-1900hrs					
5. Operations Personnel								
Operations Section Chiefs		Lee Burwell (6/6) Mike Hardison (6/6)		Division/Group Supervisor		Kerry Lathrop (6/6)		
Branch Director		Marshall Humphries (t) (6/6)		Safety		Andy Meadows (6/6), Don Kuykendall (6/6) Jeff Marshburn (t) (6/6), Charles Stanton (6/18)		
6. Resources Assigned this Period								
Strike Team/Task Force/ Resource Designator		Leader		Request #	Number Persons	Last Work Day	Drop Off Time	Pick Up Time
ENG6 Strike Team NCS#8				E-518	12	6/12	0700hrs	1900hrs
STEN 11-30		S. Thompson/ J. Green						
ENG6 Engine 11-80		B. Manning / J. Wall						
ENG6 Engine 11-3		J. McBryde / M. Cheek						
ENG6 Engine 10-31		J. Alcaras / B. Marsh						
ENG6 Engine 10-66		J. Walker / J. Holt						
ENG6 Engine 10-59		W. Cross / D. Paris						
TPL2 D-8 Strike Team				E-458	4	6/15	0700 hrs	1900 hrs
STPL		G. Watkins						
TPL2 8x51		G. Carlisle						
TPL2 8x22		M. Todd						
WAT3 NCS 7E1		S. McDonald		E-309	1	6/6	0700hrs	1900hrs
Line EMT-B		Steve Foster		O-274	1	6/17	0700hrs	1900hrs
7. Control Operations								
<ul style="list-style-type: none"> Patrol for hotspots and mop-up 100 feet inside control lines from Hwy 264 down Stomper Rd on Air Force Range to the Faircloth Rd/Jackson Rd intersection. 								
8. Special Instructions								
<ul style="list-style-type: none"> All supervisors ensure that personnel maintain safe distances during all air operations. Pay special attention to road crews repairing guard rails on Hwy. 264; there are smoke and visibility concerns. Mann's Harbor and Roanoke Island VFDs are call-when-needed. Limit use of foam within 300 ft of any water source. US 264 is closed again from Stomper Rd. north to Stumpy Point. 								
9. Division/Group Communication Summary								
Function	Frequency	System	Channel	Function	Frequency	System	Channel	
Command North South		KING NIFC	Command 10 North 11 South 12	Initial Attack		KING NIFC	5	
Tactical Div/Group		KING NIFC	4	Air to Ground		KING NIFC	8	
Prepared by (Resource Unit Leader) Hans-Christian Rohr, Chris Liv (t)		Approved by (Planning Section Chief) Don Watson			Date 6/5/2011		Time 2030 hrs	

DIVISION ASSIGNMENT LIST		1. Branch	2. Division/Group WATER HANDLING (Page 1 of 2)				
3. Incident Name PAINS BAY FIRE		4. Operational Period Date: 6/6/2011			Time: 0700-1900hrs		
5. Operations Personnel							
Operations Section Chiefs	Lee Burwell (6/6) Mike Hardison (6/6)		Division/Group Supervisor	Aaron Gay (6/12)			
Branch Director			Safety	Andy Meadows (6/6), Don Kuykendall (6/6) Jeff Marshburn (t) (6/6), Charles Stanton (6/18)			
6. Resources Assigned this Period							
Strike Team/Task Force/ Resource Designator	Leader	Request #	Number Persons	Last Work Day	Drop Off Time	Pick Up Time	
TPL2 NCS 13X62	Terrell (off 6/8-6/9)	E-228	1		0700hrs	1900hrs	
Long Reach Excavator PVT			1		0700hrs	1900hrs	
Excavator DBR PA00736	D. Strickland	E-204, O-240	1	6/6	0700hrs	1900hrs	
Dump Truck DBR	P. Meekins (off 6/8-6/9)	E-253, O-256	1		0700hrs	1900hrs	
Dump Truck DBR	L. Spruill	E-254	1		0700hrs	1900hrs	
Operator	G. Perry (off 6/6- 6/7)		1				
Mechanic	R. Rozier	O-265	1	6/11	0700hrs	1900hrs	
Front End Loader DBR	M. Guthrie (off 6/6-6/7)		1		0700hrs	1900hrs	
7. Control Operations							
<ul style="list-style-type: none"> Install and maintain pumps on Air Force Range. Utilize tractor to churn soil and direct water where needed. 							
8. Special Instructions							
<ul style="list-style-type: none"> Ensure pump logs are turned in daily to Finance. All supervisors ensure that personnel maintain safe distances during all air operations. US 264 is closed again from Stomper Rd. north to Stumpy Point. Winching: Analyze each situation before you act. Pay attention to hand location, maintain a safe distance from cables under tension, and maintain communications between operator and crewman. Excavator Work: It's your responsibility to stay clear. The excavator can swing 360 degrees in about one second. Before approaching, make eye contact with operator and allow him to idle down and come to a complete stop. Dump Truck Operations: Dump trucks have reduced visibility. All trucks should use a spotter while backing. At no time should anyone be behind a backing Vehicle! 							
9. Division/Group Communication Summary							
Function	Frequency	System	Channel	Function	Frequency	System	Channel
Command North South		KING NIFC	Command 10 North 11 South 12	Initial Attack		KING NIFC	5
Tactical Div/Group		KING NIFC	Command 11	Air to Ground		KING NIFC	8
Prepared by (Resource Unit Leader) Hans-Christian Rohr, Chris Liv (t)		Approved by (Planning Section Chief) Don Watson		Date 6/5/2011		Time 2030 hrs	

DIVISION ASSIGNMENT LIST			1. Branch	2. Division/Group WATER HANDLING (Page 2 of 2)			
3. Incident Name PAINS BAY FIRE			4. Operational Period Date: 6/6/2011		Time: 0700-1900hrs		
5. Operations Personnel							
Operations Section Chiefs	Lee Burwell (6/6) Mike Hardison (6/6)		Division/Group Supervisor	Aaron Gay (6/12)			
Branch Director			Safety	Andy Meadows (6/6), Don Kuykendall (6/6) Jeff Marshburn (t) (6/6), Charles Stanton (6/18)			
6. Resources Assigned this Period							
Strike Team/Task Force/ Resource Designator	Leader		Request #	Number Persons	Last Work Day	Drop Off Time	Pick Up Time
Pump Operator	J. Ward		O-281	1	6/12	0700hrs	1900hrs
Pump Operator	R. Anderson		O-282	1	6/12	0700hrs	1900hrs
(25) 16" Volume Lift Pumps				0			
(1) 18" Volume Lift Pump				0			
(2) 24" Volume Lift Pumps				0			
7. Control Operations							
<ul style="list-style-type: none"> Install and maintain pumps as needed. Utilize tractors to churn soil and direct water where needed. 							
8. Special Instructions							
<ul style="list-style-type: none"> Ensure pump logs are turned in daily to Finance. All supervisors ensure that personnel maintain safe distances during all air operations. US 264 is closed again from Stomper Rd. north to Stumpy Point. Winching: Analyze each situation before you act. Pay attention to hand location, maintain a safe distance from cables under tension, and maintain communications between operator and crewman. Excavator Work: It's your responsibility to stay clear. The excavator can swing 360° in about one second. Before approaching, make eye contact with operator and allow him to idle down and come to a complete stop. Dump Truck Operations: Dump trucks have reduced visibility; use a spotter while backing. At no time should anyone be behind a backing Vehicle! 							
9. Division/Group Communication Summary							
Function	Frequency	System	Channel	Function	Frequency	System	Channel
Command North South		KING NIFC	Command 10 North 11 South 12	Initial Attack		KING NIFC	5
Tactical Div/Group		KING NIFC	Command 11	Air to Ground		KING NIFC	8
Prepared by (Resource Unit Leader) Hans-Christian Rohr, Chris Liv (t)		Approved by (Planning Section Chief) Don Watson		Date 6/5/2011		Time 2030 hrs	

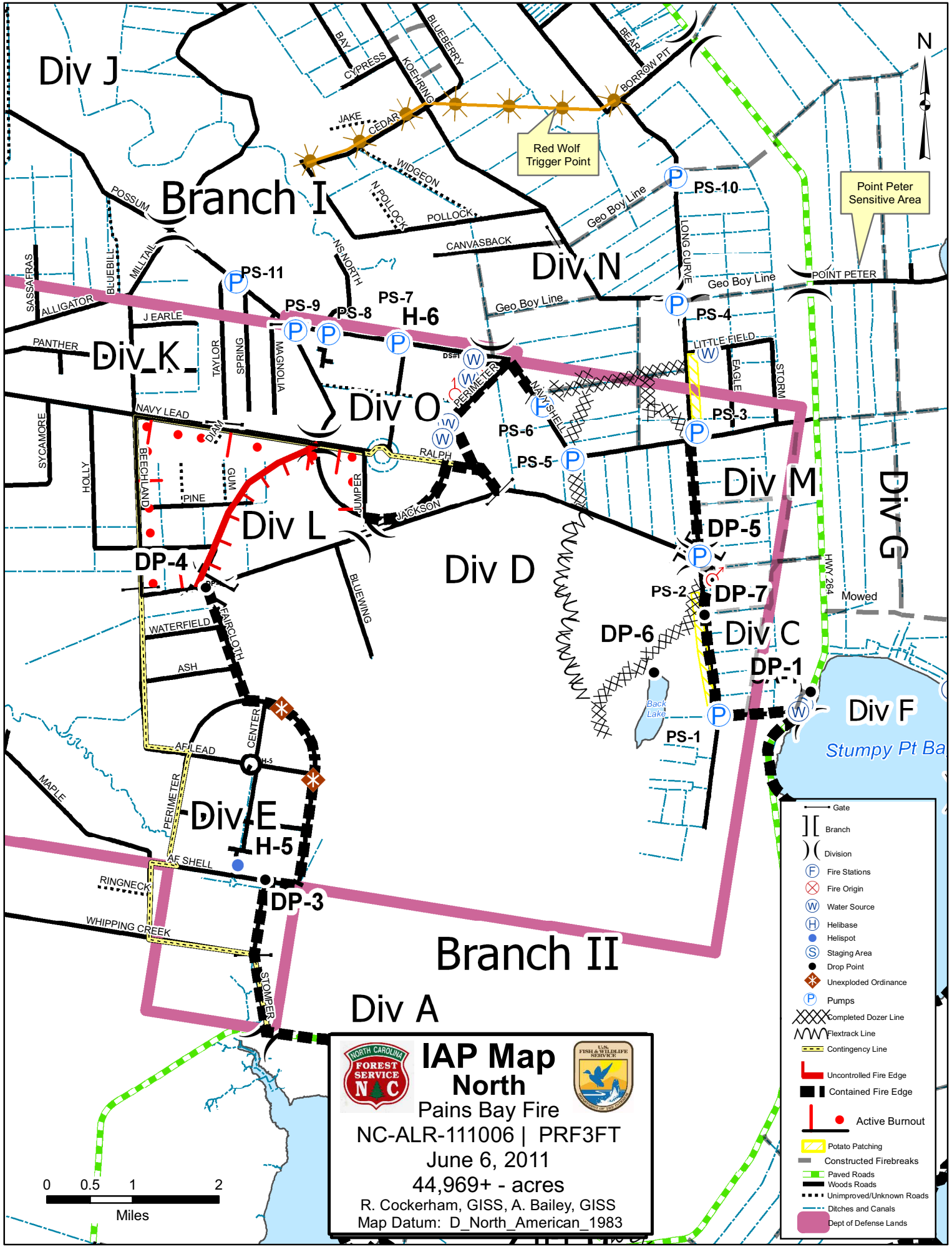
DIVISION ASSIGNMENT LIST		1. Branch			2. Division/Group Night Shift		
3. Incident Name PAINS BAY FIRE		4. Operational Period Date: 6/6/2011 Time: 0700-1900hrs					
5. Operations Personnel							
Operations Section Chiefs	Lee Burwell (6/6) Mike Hardison (6/6)	Division/Group Supervisor	Phillip Reams (6/7)				
Branch Director		Safety	Andy Meadows (6/6), Don Kuykendall (6/6) Jeff Marshburn (t) (6/6), Charles Stanton (6/18)				
6. Resources Assigned this Period							
Strike Team/Task Force/ Resource Designator	Leader	Request #	Number Persons	Last Work Day	Drop Off Time	Pick Up Time	
Pump operator	Phillip Ramsey	O-246	1	6/6	1900	0700	
Pump operator	Brad Colie	O-247	1	6/6	1900	0700	
Pump operator	Justin Bennett	O-248	1	6/6	1900	0700	
Pump operator	Brian Mixon	O-242	1	6/6	1900	0700	
Mechanic	Larry Caldwell	O-255	1	6/11	1900	0700	
7. Control Operations							
<ul style="list-style-type: none"> Monitor pump operations on Div D/E, C, and A/B. US 264 has re-opened to public traffic. Be Alert. 							
8. Special Instructions							
<ul style="list-style-type: none"> In case of an emergency utilize Dare County VFD radio (800 mhz) to contact County EOC. Work together. Provide adequate lighting prior to shutting down of pumps for servicing. Stay away from canal banks. Watch for rattlesnakes and bears. Do not throw food on ground or in canal. Keep smoke exposure to a minimum but do not stage on Hwy 264. Refer to Safety Message and Medical Plan for more detail. 							
9. Division/Group Communication Summary							
Function	Frequency	System	Channel	Function	Frequency	System	Channel
Command North South		KING NIFC	Command 10 North 11 South 12	Initial Attack		KING NIFC	5
Tactical Div/Group		KING NIFC	3	Air to Ground		KING NIFC	8
Prepared by (Resource Unit Leader) Hans-Christian Rohr, Chris Liv (t)		Approved by (Planning Section Chief) Don Watson		Date 6/5/2011		Time 2030 hrs	

Incident Radio Communications Plan				1. Incident Name: Pains Bay Fire	2. Date/Time Prepared: 6/5/2011, 1600hr	3. Operational Period (Date/Time) 6/6/2011, 0700-1900hr
4. Basic Radio Channel Utilization						
System/Cache	Channel	Function	Frequency/Tone	Assignment	Remarks	
NCDFR	CH 1	Tac 1	RX 151.400W TX 151.400W tone 136.5	Water Handling Group		
NCDFR	CH 2	Tac 2	RX 151.460W TX 151.460W tone 136.5	Div D,E,C,F		
NCDFR	CH 3	Tac 3	RX 151.310W TX 151.310W tone 136.5	Structure Protection, Div M		
NIFC	CH 4	Tac 4	RX 168.050N TX 168.050N	Div A,B		
NIFC	CH 5	Tac 5	RX 168.200N TX 168.200N	Initial Attack, Div G, Div N		
NIFC	CH 6	Tac 6	RX 168.600N TX 168.600N	Div H, Div O, Div I		
	CH 7					
NIFC	CH 8	US FWS Air to Ground	RX 171.575N TX 171.575N tone 131.8	Fire Line		
NIFC	CH 9	TAC 9	RX 168.350N TX 168.350N	Fire Line TAC		
NCDFR	CH 10	Stumpy Point CMD Repeater 10	RX 151.325W tone 136.5 TX 159.330W tone 118.8	CMD REPEATER 10		
US FWS	CH 11	Columbia CMD Repeater 11	RX 172.675N TX 168.500N tone 118.8	RAWS CMD North Water Handling Group		
US FWS	CH 12	Engelhard CMD Repeater 12	RX 164.625N TX 163.150N tone 186.2	Command South		
US FWS	CH 13	Tac 13	RX 162.2375N TX 162.2375N tone 156.7			
	CH 14					
Air to Ground	CH 15	Air to Ground Secondary	RX 169.925N TX 169.925N			
AIR GRD	CH 16	AIR GUARD	RX 168.625N TX 168.625N Tone 110.9	Emergency contact with Aircraft		
Communications		Communications Unit	252-903-1701 cell 252-473-1241 office	Paige Tart		
ICS 205	Prepared By (Communications Unit Leader): Paige Tart					

MEDICAL PLAN	1. Incident Name	2. Date Prepared	3. Time Prepared	4. Operational Period					
	Pains Bay Fire	06/5/11	2200	Day/Night					
5. Incident Medical Aid Station									
Medical Aid Stations		Location			Paramedics				
					Yes		No		
Dare County Parks and Recreation Bldg (0900-2030hrs)		410 Airport Road Manteo, NC					X		
Stumpy Point VFD (0730-0830hrs)		Stumpy Point					X		
Buster Rodgers 828-507-9123		Available for Branch 1					X		
Steve Foster 979-236-8959		Available for Branch 2					X		
6. Transportation									
A. Ambulance Services									
Name		Address		Phone		Paramedics			
						Yes No			
Dare County EMS Station #8		6677 Hwy 64 Business, Manns Harbor, NC		Dare Central (911)		X			
Dare County Med Flight		1078 Driftwood Dr., Manteo, NC		911		X			
B. Incident Ambulances									
Name		Location			Paramedics				
					Yes		No		
7. Hospitals									
Name		Address		Travel Time		Helipad		Burn Center	
				Air Ground		Yes No		Yes No	
Outer Banks Hospital		Mile Post 14, 4800 S. Croatan Hwy Nags Head, NC Latitude: N 35° 56' 20.33" Longitude: W 75° 45' 5.89"		15 30		(252) 449-4500		X	
Sentara Norfolk General Hospital		Norfolk, VA TRAUMA BURN CENTER		30 90		(757) 388-3000		X	
8. Medical Emergency Procedures									
<p>**FOR CRITICAL EMERGENCIES** Step 1. Report all injuries and illnesses to the closest DIVS. DIVS will notify the Line EMT and ICP Communications, and include the extent of the injury and transportation needed. Do not use patient's name on the radio. A medical emergency should be declared over the radio immediately. All radio traffic will be kept to a minimum so emergency procedures can proceed uninhibited. Step 2. ICP Communications will notify Dare Central Dispatch (911) and MEDL. Safety will be notified. Dare County EMS will respond and determine the appropriate treatment, transportation and facility needed. If ground transportation is determined, assign personnel to meet the ambulance at a location that is easily accessible to lead them to the site of the injured. If patient is transported to meet EMS personnel need to remain with patient until EMS has arrived. Line EMT is staged at Navy Shell & Long Curve Rd. to respond to injuries and stabilize patient until EMS personnel arrive. **FOR MINOR EMERGENCIES** Step 1. Patient - Will Advise Their Supervisor Step 2. Patient - Will Receive Care Step 3. Patient Supervisor/Patient - Will Advise Division Supervisor Step 4. Div. Sup/Patient Supervisor- Will Document Incident On 214 Step 5. Div. Sup. /Patient's Supervisor - Will Advise The Medical Unit Leader At The End Of Each Shift Of ANY Illness or Injury And Of ANY Medical Care Given. **If transportation is needed it will be arranged by MEDL.**</p> <p>Nighttime Operations: Communicate all emergency medical needs directly to Dare County Emergency Communications via 800mhz radio furnished by NCDNR Dare County Ranger, and contact Safety Officers Andy Meadows 252-229-0160 or Don Kuykendall 919-218-9505 and Jimmy Halliburton MEDL (T) 828-292-6503.</p> <p><u>ANY INJURY OR ILLNESS IN WHICH ANY TYPE OF CARE IS GIVEN WILL BE DOCUMENTED ON THE UNIT'S 214 AND THE MEDICAL UNIT LEADER WILL EITHER RECEIVE A COPY OF THE 214 OR BE ADVISED VERBALLY BY THE DIVISION SUPERVISOR, PATIENT'S SUPERVISOR OR PATIENT AT THE END OF EACH SHIFT.</u></p>									
Prepared by (Medical Unit Leader)					10. Reviewed by (Safety Officer)				
Jimmy Halliburton, MEDL(T)					Jeffrey Marshburn, SOF (T)				

AIR OPERATIONS SUMMARY		PREPARED BY: Walter Bunt / Greg Yates AOBD (T)		PREPARED DATE/TIME: 6/05/2011 1700	
1. INCIDENT NAME Pains Bay Fire		2. OPERATIONAL PERIOD DATE: 6/06/2011		START TIME: 0800	
		SUNRISE: 0546		END TIME: 2000	
				SUNSET: 2016	
3. REMARKS (Safety Notes, Hazards, Air Operations Special Equipment, etc.) - Establish positive communication with Divisions and Operations when over fire. - Contact DOD towers when enter FTA. (122.9) "Navy Dare" or "Air force Dare" - ONLY USE APPROVED DIP SITES. - NOTE THAT SOME TOWERS ARE NOT MARKED ON SECTIONAL MAPS. (Can be 2500' Tall) - SQUAWK 1255 ensure warning lights are on. - "It takes everyone to say yes, only one to say no for all missions." M.M. - Expect DOD aircraft to be operating over range above 4,000' MSL.					
4. MEDEVAC A/C:		5. TFR:			
Dare County Med Flight		1/2182 A-22 3100' MSL			
6. PERSONNEL					
AOBD: Walter Bunt	Phone	AM	FM		
AOBD (T) Greg Yates	530-921-3435	123.125			
ASGS: Mike Maguire	828-230-9101 828-775-1871	A-8 A-13 NATIONAL FLIGHT FOLLOWING (NARROW BAND) ATGS/LEAD/ASM TRANSITION-HANDOFF			
ATGS: Rob Bickerstaffe	828-989-1314	AIR/AIR PRIMARY			
HLCO/ ATGS: Carl Piper	530-295-7273	AIR/AIR SECONDARY			
HLCO: In Route		NATIONAL FLIGHT FOLLOWING (NARROW BAND) ATGS/LEAD/ASM TRANSITION-HANDOFF			
ATGS (T): Donnie Harris	252-473-5444	AIR/GROUND: Primary			
HLCO (T): Billy Garduno	530-604-8643	En Route	Rx: 171.575 N Tx: 171.575 N Tone 131.8 169.925N		
HEB1: Tom Kennedy R&R	912-308-6036	AIR/GROUND: Secondary			
HEB2 (T): Cory Waters	252-475-0102	COMMAND RPT SEE ICS 205	Rx:		
DECK FREQ:					
		168.6125			
FOR ENTERING DARE BOMBING RANGE:					
Contact towers to inform them of your status entering and departing FTA.					
		122.900			
8. FIXED WING # Available/ Type/ Make-Model/FAA N# / Bases					
Order Heavy Air Tankers Through SACC-678-320-3012					
ALLIGATOR RIVER DISPATCH 252-473-1744 X 21					
Gary Weber A/C 252-473-1840 / 252-473-1721					
Air Force Tower 252-473-2201					
Navy Tower 252-473-2720					
Engelhard loading crew					
Kai Best: 252-526-1472					
Kinston Operations					
Neil Barrow: 252-520-2402					
Engelhard Airstrip: N35 33.74' X W75 57.31'					
Edenton Airstrip: N36 01.72 X W76 34.19'					
Currituck Airstrip: N36 23.94' X W76 0.98'					
ATGS Aircraft Location: MQI					
N135BA A-31					
S.E.A.T.'S- Available @ 1000, first dispatch from Kinston					
CL-215 Available Kinston after 1300					

9. HELICOPTERS (Use Additional Sheets As Necessary)													
FAA N#	TY	MAKE/MODEL	BASE	AVAIL	START	REMARKS	FAA N#	TY	MAKE/MODEL	BASE	AVAIL	START	REMARKS
N161KA A-26	1	K-Max	MQI	0800	0830	Todd Toiletsrud 509-669-0970	N21HX A-61	3	Bell 407	Pains HB	0830	0830	Persephone Thompson 989-305-1223
N905CH A-39	1	Sikorsky S-61	MQI	0800	0830	Mark Carter 336-302-0342	N894HA A-57	3	Bell 206	Pains HB	0830	0830	Cory Waters 252-475-0102



Point Peter Sensitive Area

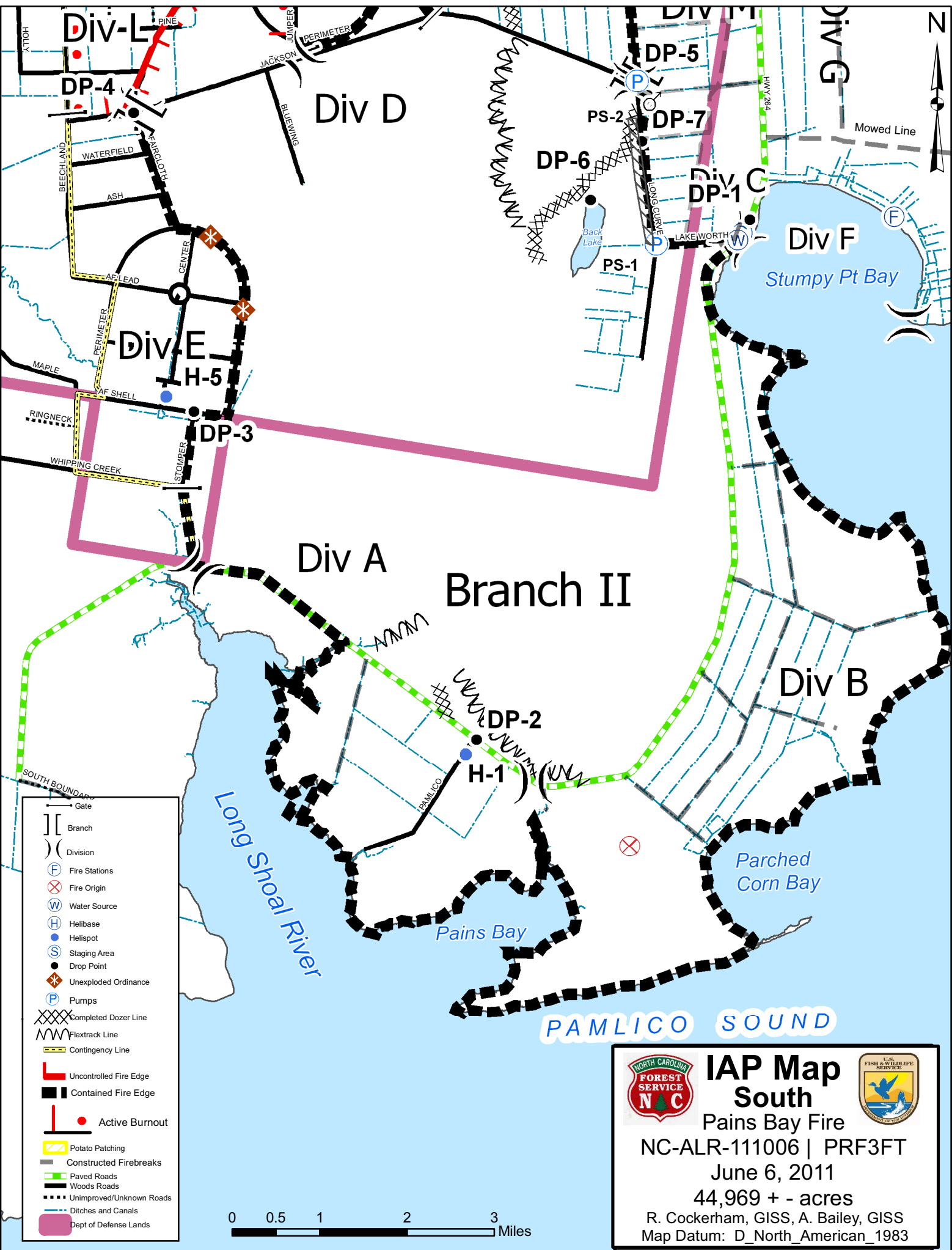
Red Wolf Trigger Point


Stumpy Pt Ba

IAP Map North
Pains Bay Fire
 NC-ALR-111006 | PRF3FT
 June 6, 2011
 44,969+ - acres
 R. Cockerham, GISS, A. Bailey, GISS
 Map Datum: D_North_American_1983



- Gate
- Branch
- Division
- Fire Stations
- Fire Origin
- Water Source
- Helibase
- Helispot
- Staging Area
- Drop Point
- Unexploded Ordinance
- Pumps
- Completed Dozer Line
- Flextrack Line
- Contingency Line
- Uncontrolled Fire Edge
- Contained Fire Edge
- Active Burnout
- Potato Patching
- Constructed Firebreaks
- Paved Roads
- Woods Roads
- Unimproved/Unknown Roads
- Ditches and Canals
- Dept. of Defense Lands





IAP Map South

Pains Bay Fire


NC-ALR-111006 | PRF3FT

June 6, 2011

44,969 + - acres

R. Cockerham, GISS, A. Bailey, GISS

Map Datum: D_North_American_1983



PAINS BAY FIRE CONTACT LIST June 6, 2011

Name	Position	Phone
COMMAND		
Hildreth, Reid	ICT2	252-903-0076
Howard, John	ICT2 (t)	919-801-4167
Steltz, Diane	PIO2	919-444-3894
Thompson, Gary	LOFR	910-334-0028
Kuykendall, Donald	SOF2	919-218-9505
Meadows, Andy	SOF2	252-229-0160
Stanton, Charles	SOF2	509-679-7191
AGENCY ADMINISTRATORS		
Pate, Greg	NCDFR	252-560-5018
Byrant, Mike	FWS Project Leader	252-216-7505
Lanier, Scott	FWS Dep. Proj Leader	252-216-7506
AGENCY REPRESENTATIVES		
Del Grosso, Shane	FWS	605-354-3226
Crews, Tom	FWS	252-475-4269
Strawser, Bonnie	PIO2	252-216-8667
Stewart, Dennis	FWS	252-473-1131x231
Shackelford, Rob	NCDFR	252-216-5271
		252-473-2531 office
Lt. Cmdr. Marty Hill	US Navy	757-433-1336
Heaton, Don	US Navy Int. Range Manager	386-717-8799
Christopher, Ed	NCDFR D-13	252-542-0119
COOPERATORS		
Price, RD	Chief, Stumpy Pt FD	252-216-7146
Price, Curtis	Dep. Chief, Stumpy Pt FD	252-216-7094 cell
		252-475-1040 home
Sanderson, Sandy	Emergency Mgmt Coord	252-473-8326
Doughtie, Doug	Dare County Sheriff	252-473-3444
Joe Lafferty	USAF	252-216-8751 cell
		252-473-1906 home
Alligator River NWR	Office	252-473-1131
Manwaring, Robert	USFS San Dimas TDC	626-224-0123
PLANS		
Watson, Don	PSC2	910-334-0033
Register, Dennis	PSC2	252-229-0165
Rohr, Hans-Christian	RESL	910-874-2971
Liv, Chris	RESL (t)	252-567-0830
Wambaugh, Jeanne	SCKN (t)	814-203-7596
Bost, Mark	SITL	919-545-4499
Petruncio, Mike	FOBS	252-312-4371
Rousseau, Mark	FOBS	207-446-6526
Cockerham, Richard	GISS	828-292-4575
Bailey, Andrew	GISS	919-218-7069
Brown, Lloyd	FBAN	252-619-4481
Curcio, Gary	THSP	919-810-5623

Name	Position	Phone
OPERATIONS		
Burwell, Lee	OSC2	919-218-4263
Hardison, Mike	OSC2	910-770-0810
Banks, Ferrell	OPBD Branch 1	704-616-6439
Humphries, Marshall	OPBD (t) Branch 2	919-218-6402
Montague, Rob	DIVS A,B	919-691-2227
Lathrop, Kerry	DIVS E	828-508-1349
Elam, Brian	DIVS L	336-207-3058
Lafon, Davd	DIVS N	252-312-4367
Gibby, Scott	DIVS O	540-622-3507
Newman, Dwight	ICT4	870-715-9493
Gay, Aaron	Water Handling Grp.	252-312-4369
Reams, Phillip	DIVS Night	336-504-4297
Gibbs, Marshall	THSP	252-542-9658
AIR OPERATIONS		
Walter Bunt	AOBD	530-921-3435
Yates, Greg	AOBD (t)	828-230-9101
Bickerstaff, Rob	ATGS	828-989-1314
Maguire, Mike	ASGS	828-775-1871
Kennedy, Tom	HEB1	912-308-6036
FINANCE		
Andres, Dave	FSC2	919-218-4997
Chellburg, Richard	PROC	336-239-1442
Lawrence, Tracy	TIME	252-333-5626
Myers, Ron	COST	919-902-1842
Baker, Susan	PTRC/EQTR	252-542-0654
Hinz, Kurt	COMP	507-696-3669
Domingos, Dede	IBA	541-417-1628
Czernik, Helen	IBA(t)	252-475-8339
LOGISTICS		
Cleland, Troy	LSC2	252-229-1997
Shidal, Travis	ORDM	704- 473-0430
Berg, Ned	SPUL	252-229-0163
Logan, Jamie	RCDM	828-413-2508
Tart, Paige	COML	252-903-1701
Collins, Bill	COMT	910-540-1833
Sharpton, Chris	RADO	828-989-7000
Aldridge, Jim	FACL	919-636-2471
Hubacker, Chris	FDUL	252-526-1470
Berry, Jerol	GSUL	252-741-0229
Huggins, Michael	EQPM	828-691-1683
Evans, Martin	EQPM	252-945-0607
Halliburton, Jimmy	MEDL	828-292-6503
Rogers, Buster	Line EMTB	828-507-9123
Steve Foster	Line EMTB	979-236-8959
Riner, Jimmy	SECM	270-703-0136

ICP Communications 252-473-1241
 ICP Fax 252-473-1162
 NWR Dispatch 252-473-1744 x 21

ICP Finance 252-473-1237
 ICP Demob 252-473-1137

ASSIGNMENT EXTENSION FOR FEDERAL EMPLOYEES AND AD HIRES.

- Prior to assigning incident personnel to back-to-back assignments, their health, readiness, and capability must be considered. The health and safety of incident personnel and resources will not be compromised under any circumstance.
- Upon completion of the standard 14 day assignment, an extension of up to an additional 14 days may be allowed (for a total of up to 30 days, inclusive of mandatory days off, and exclusive of travel).
- Regardless of extension duration, two mandatory days off will be provided prior to the 22nd day of the assignment. When personnel are required to take a mandatory day off, which falls on their normal day off, there will be no pay compensation.
- Refer to Interagency Incident Business Management Handbook, Chapter 10, 12.7-2 (Length of Assignment)

ERROR: undefinedresource
OFFENDING COMMAND: findresource

STACK:

/0
/CSA
/0
/CSA
-mark-