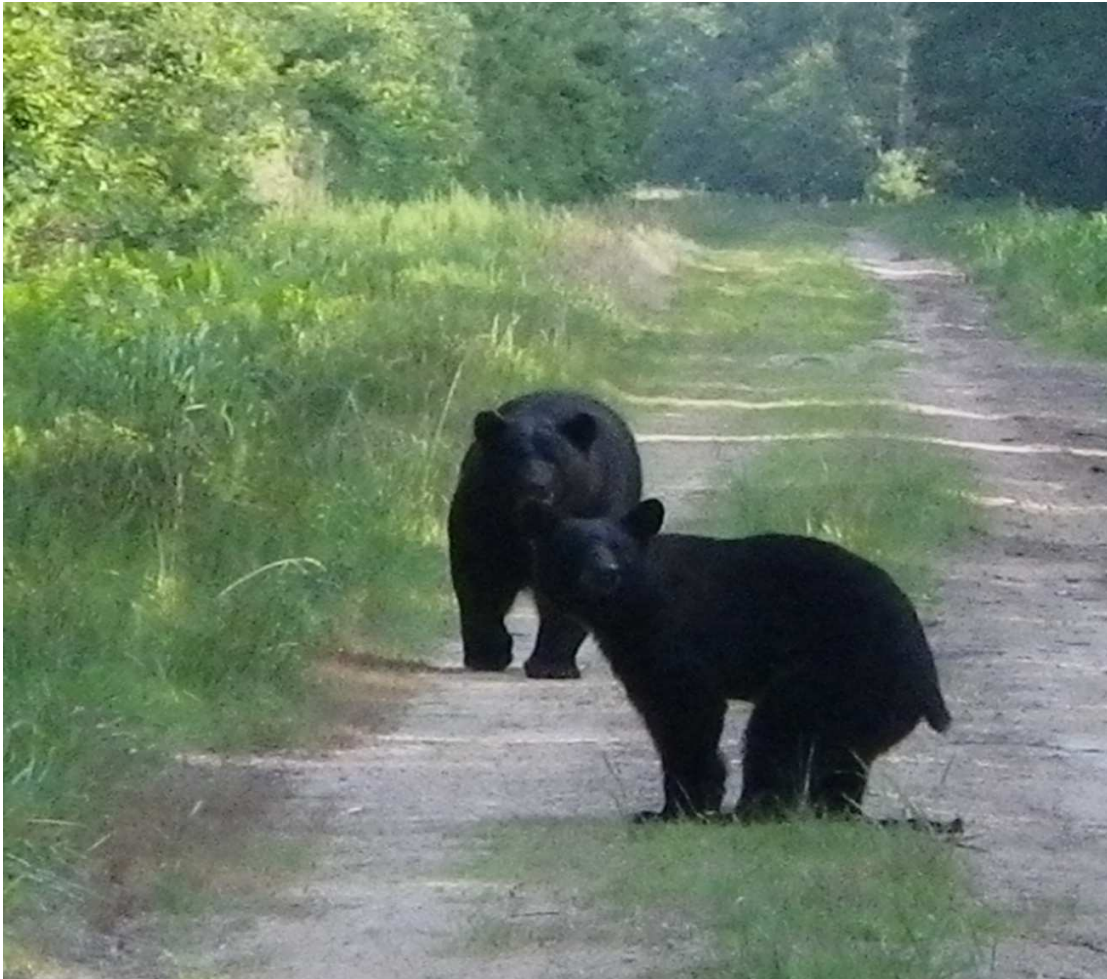


PAINS BAY FIRE

NC-ALR-111006
PRF3FT (1502)



Incident Action Plan

Tuesday

**June 14, 2011
0700-1900 hrs**



INCIDENT OBJECTIVES	1. INCIDENT NAME PAINS BAY FIRE	2. DATE PREPARED 6/14/2011	3. TIME PREPARED 1830
4. OPERATIONAL PERIOD (DATE/TIME) Tuesday, June 15, 2011 0700 to 1900 hrs			
5. GENERAL CONTROL OBJECTIVES FOR THE INCIDENT (INCLUDE ALTERNATIVES)			
<p><u>Control Objectives</u></p> <ol style="list-style-type: none"> 1. Providing for the safety, health, and welfare of firefighters and general public is our highest priority: <ul style="list-style-type: none"> • Adhere to the 10 Standard Fire Orders • Mitigate the 18 Watch-Out Situations • Implement and maintain LCES • Conduct frequent Risk Mgmt. Assessments 2. Coordinate with Dare Emergency Management Coordinator if fire threatens Stumpy Point village and evacuations appear necessary. 3. Continue to provide LE presence at designated location on US 264 to implement immediate road closure if needed for escape fire, dense smoke/fog conditions.. 4. Keep fire contained west of US 264, south of US 64 and east of the Milltail Rd / Alligator Rd / Poplar Ridge Rd corridor. 5. Provide for initial attack in areas as designated in the Delegation of Authority. 6. Continue to implement written Water Handling Plan. 7. Ensure that suppression & containment strategies on FWS property follow minimum impact suppression tactics. Any escalation in tactics should consider progress made with current tactics and the likelihood of those tactics being successful. 8. Provide for the protection of infrastructure devices, experimental tree plantations, and soil and water monitoring stations throughout USFWS property and infrastructure, structures, target, laser city, cameras, etc with Dept. of Defense (DOD) land. 9. Coordinate the identification of potential suppression rehabilitation needs for both USFWS and DOD lands. <p><u>Management Objectives</u></p> <ol style="list-style-type: none"> 1. Keep general public & local officials in affected counties and incident stakeholders informed of fire status through situational updates and personal contacts. 2. Provide for accurate cost tracking and documentation to meet the needs of USFWS and DOD. Ensure financial management conducted per Interagency Incident Business Handbook procedures. 3. Emphasize cost containment through continual assessment of personnel and resource needs and the "right sizing" of incident staffing. 4. Work to allow military flight operation, even if limited, to resume when can be done safely within FAA regulations and without hindering suppression operations on DOD or USFWS lands. 			
6. WEATHER FORECAST FOR OPERATIONAL PERIOD			
MSunny, Max Temp 79, Min RH 46%, Winds N 5-10 MPH, MxHt. 6700-7900', Transport Winds N 12-16 MPH			
7. GENERAL SAFETY MESSAGE			
See Attached Tailgate Safety Briefing Sheet.			
8. ATTACHMENTS (X IF ATTACHED)			
<input checked="" type="checkbox"/> ORGANIZATION LIST (ICS 203)	<input checked="" type="checkbox"/> MEDICAL PLAN (ICS 206)	<input checked="" type="checkbox"/> SAFETY MESSAGE	
<input checked="" type="checkbox"/> ASSIGNMENT LIST (ICS 204)	<input checked="" type="checkbox"/> INCIDENT MAP	<input checked="" type="checkbox"/> PHONE LIST	
<input checked="" type="checkbox"/> COMMUNICATIONS PLAN (ICS 205)	<input checked="" type="checkbox"/> AIR OPS SUMMARY (ICS 220)	<input checked="" type="checkbox"/> UNIT LOG (ICS 214)	
9. PREPARED BY (PLANNING SECTION CHIEF)	10. APPROVED BY (INCIDENT COMMANDER)		

ORGANIZATION ASSIGNMENT LIST		9. Operations Section	
1. Incident Name: PAINS BAY FIRE		Field Ops	Shane Hardee (6/19) Brent Triplett (6/15)
		Planning Ops	Tim Oliverius (6/20) Mike Good (t) (6/19)
		a. Suppression Branch	
2. Date Prepared 6/13/11	3. Time 1700	Branch Director	Rickie Darden (6/15)
4. Operational Period Tuesday, 6/14/11 0700-1900		Division/Group	A,B,F Kim Arrington (6/18)
5. Command and General Staff		Division/Group	E Kim Arrington (6/18)
Incident Commander	Mike Hendricks (6/19)	Division/Group	K,L Scott Ellis (6/19)
Deputy		Division/Group	O Scott Ellis (6/19)
Safety Officers	Dwight Bryant (6/15), Tater Maines (6/15), Charles Stanton (6/18) Hunter Birkhead (6/21)	Division/Group	C,M,N Jay Strider (6/19)
Liaison Officer	Larry Such (6/17)	Division/Group	
Information Officer	David Brown (6/19) Brian Haines (6/19)	Division/Group	
		ICT4	Initial Attack Dwight Newman (6/16)
		b. Water Handling Branch	
6a. Agency Administrators		Branch Director	Brett Waters (6/21) Aaron Gay (6/16)
US FWS	Mike Bryant, Scott Lanier, Matt Connolly	Division/Group	Water Handling
NC DFR	David Lane	Division/Group	Night Shift David Rooks (6/17)
6b. Agency Representatives		Division/Group	
US FWS	Paul Pallas	c. Branch III	
NC DFR D-13	Ed Christopher	Division/Group	
US FWS	Bonnie Strawser	Division/Group	
US FWS Rehab	Sue Wilder		
Dare EM	Sandy Sanderson	Division/Group	
Stumpy Pt. FD	Curtis Price	d. Branch IV	
US Navy	Lt. Cmdr. Marty Hill	Branch Director	
Interim Range Mgr	Don Heaton	Division/Group	
US Air Force	Joe Lafferty	Division/Group	
7. Planning Section		Division/Group	
Chief	Kevin Harvell (6/19)	Division/Group	
Chief	Larry Such (6/19)	Division/Group	
Resources Unit	Kelli Palmer (6/19)	e. Other Groups	
Status Check-In	Jonathan McCall (t) (6/19)		
Situation Unit	Michael Cheek (6/19)		
GISS	Roger Hart(6/19) Andrew Bailey (6/19) Audrey Gustafson (6/16)		
Field Observers	Caleb Jones (6/19) Trent Duncan (6/19)	f. Air Operations Branch	
Fire Behavior	David Greathouse (6/19)	Air Ops Branch Directors	Mike Mcguire (6/25)
Smoke Analyst	Gary Curcio (6/22)	Air Tactical Grp Supervisor	Rob Bickerstaff (6/23)
Demobilization Unit	Michael Chesnutt (6/19)	Air Tactical Grp Supervisor	Donnie Harris (7/3)
Documentation Unit	Laura Hendrick (6/15) Rob Roberson (6/19)	Air Support Grp Supervisor	Al Driesbach (6/25)
8. Logistics Section		Helibase Manager	Tom Kennedy (6/24)
Chief	Roger Harris (6/19)	10. Finance Section	
Supply Unit	Patrick Raynor (6/19)	Chief	Annie Lott (6/19)
Receiving & Dist		Purchasing Agent	Christopher Frank (6/17)
Ground Support Unit	Max Suttles (6/19)	Procurement Unit	Sheila Head (6/19)
Facilities Unit	Clyde Leggins (6/19)	Time Unit	Gina Rose (6/19)
Food Unit	Alton Pery (6/19)	Cost Unit	Beth Plummer (6/19)
Ordering Manager	Tim Flemming (6/19)	Equip/Pers Time Recorder	Susan Baker / Carolyn Cross
Communications Unit	Dick Ruble (6/19)	Incident Business Advisors	Helen Czernik (7/5) Dede Domingos (6/15)
Communications Tech	Jim Smith (6/19)	Computer Specialist	Tom James (6/19)
Radio Operator	Hugh Hassell (6/19)	Prepared by:	
Equipment Managers	Honeycutt (6/19) Rogers (t) (6/19) Evans (6/26)	Kelli Palmer	
Medical Unit	Randy Kearney (6/19)		
Security Mngr	George Hedges (6/21)		

FIRE BEHAVIOR FORECAST

FORECAST NUMBER: 35	TYPE OF FIRE: Wildfire
FIRE NAME: Pains Bay	OPERATIONAL PERIOD: 6/14/11 Days
DATE ISSUED: 6/13/11	TIME ISSUED: 1800
UNIT: NCDNR	SIGNED: /s/ David Greathouse

INPUTS

WEATHER SUMMARY:

Cooler temperatures with lower relative humidity's today...

Today: Mostly Sunny

Max Temp – 79, Min RH – 46%, Winds – N 5-10mph
 Mixing height – 6700'-7900', Transport Winds – N 12-16mph, Haines 5

Tonight: Partly cloudy

Min Temp – 61, Max RH – 96%, Winds N 5-7mph

Be aware of the local sea breeze influence throughout the fire area.

OUTPUTS

FIRE BEHAVIOR

GENERAL:

This fire is burning mainly in Pocosin shrub fuels with a Pond Pine overstory. Severe drought conditions along with this volatile fuel type can produce rapid rates of spread and high flame lengths, even when relative humidity's are high and winds speeds are low. Organic soils in this area contribute to the fire intensity and will continue to for long periods of time under the current conditions

Yesterday active fire behavior such as flare ups in unburned islands, re-burning and continued smoldering in the organic soil was seen in the interior of the fire perimeter.

SPECIFIC:

All Divisions: Expect active burning in remaining green fuel and re-burn in browned and cured fuel as well as continued active fire and smoldering in organic soils.

Divisions A, E, C, M: Heads up while working these divisions today. Any quartering of the predicted North winds can put pressure on your lines today. Any torching near the fire line could loft embers across the fire line causing spot fires. Spotting can be up to .1 miles and the probability of ignition is 30%

Any fire that get established can see rates of spread of 17-30ch/hr and flame lengths of 11'-14'

NFDRS Indices (Fuel Model G)

	ERC-G	Burning Index
Yesterday	36	32
Today	38	37

****The current KBDI is 587****

AIR OPERATIONS:

MVFR conditions can develop over the fire area due to smoke

SAFETY

Watch-out situation # 11; Unburned fuel between you and the main fire
 Post lookouts, maintain good communication, and have adequate escape routes.

Local thresholds that shout watch out; Temp above 90 degrees, RH's below 25%, Winds greater than

HEALTH AND SAFETY MESSAGE

SAFETY starts with *YOU*

We are ALL accountable for SAFE behaviors

INCIDENT: Pains Bay Fire

DATE: 6/14/11

TIME: 0700-1900

Major Hazards and Risks:

EXTREME FIRE BEHAVIOR – Maintain situational awareness, follow 10 Standard Orders, recognize / mitigate the 18 Watch Out Situations, and apply LCES. Know the fire weather forecast. Monitor conditions.

COMPLACENCY-Do not let your guard down! Stay Alert.

AIR OPERATIONS- Stay away from bucket and retardant drop areas, use air to ground frequency when communicating with aircraft. Drops will knock over snags

SNAGS-Stay out of area, essential fireline personnel only, look at root system before working in area.

HYDRATION/HEAT STRESS- Drink often and drink a lot, before you get thirsty. 4:1 water to poweraid.

THUNDERSTORMS- Observe the 30/30 rule. Refer to your IRPG page 19 for thunderstorm safety.

Pumps- Stay away from volume pumps. PTOs and exposed drive belts can injure you. Canal banks can collapse. Noise levels can be high. Shut down pumps to service.

ENVIRONMENTAL HAZARDS – Watch for and stay away from rattlesnakes and wildlife. Use insect repellent.

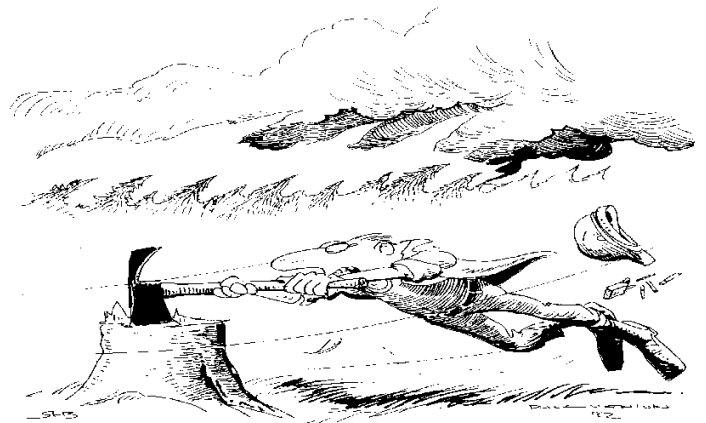
DRIVING – Drive defensively for conditions and use the person in the right hand front seat as a lookout, navigator, and backing guide. Headlights and seatbelts must be used by all personnel. 10 MPH very dusty road conditions. Limit driving on interior roads to essential fireline personnel.

Accidents: Contact your supervisor and inform him/her. Supervisor will then contact incident communications and clear all non- emergency radio traffic. Nearest supervisor will assume command of the accident until IC can take control. Notify an incident safety officer.

Conduct Tailgate Safety Briefings / Use Briefing Checklist Inside Back Cover of I.R.P.G.

Night Shift Operations

Military aircraft are using the bomb ranges at night beginning at 2100 hrs. Fire personnel should stay out of the area and off all interior roads. Interior roads are used for sight lines for incoming aircraft. **STAY CLEAR.**



15. WIND INCREASES AND/OR CHANGES DIRECTION

Pains Bay Fire Information Section

Tuesday June 14, 2011

If you see unescorted media on the fire, please refer them to a Public Information Officer, so an escort can be provided. **PIO contact information:**

- **David Brown** **Cell – (828) 273-0982****Radio – Information Brown**
- **Brian Haines** **Cell – (919) 218-9728****Radio – Information Haines**

If the media asks you about the fire, use the talking points below:

- The fire was caused by a lightning strike on May 4 and was reported on May 5.
- The fire has burned 45,294 acres (70 square miles) and is 75% contained. The increase in acreage is because of a small burn out conducted on Monday.
- The wind has shifted to the north, so firefighters have increased their efforts on the southwest edge of the fire along Stomper Road and Hwy 264.
- Firefighters are using high volume pumps to move water through canals to flood areas of ground fire near the fire perimeter.
- Up to 165 million gallons of water per day are being pumped from Stumpy Point Bay, Peter Point Canal and Milltail Creek. Whipping Creek is another water source that will be used soon.
- An irrigation system and rain bird sprinklers are being used along parts of the fire perimeter.
- Brush trucks and helicopters are used to extinguish hot spots near containment lines.
- Pockets of ground fire will continue burning until it consumes all the peat down to mineral soil, the fire burns down to a level of high soil moisture, or the soil moisture level rises to the fire as a result of extended heavy rain or pumping operations.
- It is impossible to pump enough water to completely extinguish all ground fire.
- The ground fire could burn for weeks or even months if the dry weather trend continues. Smoke will linger in the area as long as there is ground fire.
- For safety reasons the public is restricted from using Refuge and Dare County Range roads in the fire area.
- The Alligator River National Wildlife Refuge and the Dare County Range are fire dependent ecosystems that require periodic fire to maintain the ecological balance.
- Wildlife species in the area are accustomed to living in a fire adapted ecosystem and will recover.
- A plan is being developed to rehabilitate the fire area once the fire is fully contained.

#####

DIVISION ASSIGNMENT LIST			1. Branch Suppression Branch		2. Division/Group Division C, M, N (Page 1 of 3)		
3. Incident Name PAINS BAY FIRE			4. Operational Period Date: 6/14/2011 Time: 0700-1900hrs				
5. Operations Personnel							
Operations Section Chiefs		Shane Hardee (6/19) Brent Triplett (t) (6/15)		Division/Group Supervisor		Jay Strider (6/19)	
Branch Director		Rickie Darden (6/19)		Safety		Dwight Bryant (6/19), Tater Maines (t) (6/19), Charles Stanton (6/18) Hunter Birckhead (6/21)	
6. Resources Assigned this Period							
Strike Team/Task Force/ Resource Designator		Leader		Request #	Number Persons	Last Work Day	Drop Off Time
ENG6 Strike Team Interagency #1							0700hrs
STEN		Lee Colson		O-384	1	6/25	
ENG6 SC-FMF		Hammond, Abbott, Danaher		E-13	3	6/20	
Eng6 VAVAF Eng 31		Wright, Henning, Showalter, Whitmore		E-536	4	6/19	
ENG6 VASHP Engine 41		Rudacille, Hall, McCoy		E-9	3	6/18	
Mop up trailer D-13 #2				E-240			0700hrs
(3) 6" Pumps				E-5151 E-5192 E-338			
(3) 2.5 " Pumps					0		
7. Control Operations <ul style="list-style-type: none"> Monitor and patrol for hotspots and spot-overs. Mop-up control line north of Navy Shell Rd. Install irrigation along fuel break line from Perimeter Rd to Ralph Rd. Be prepared to execute irrigation plan along NE corner of DIV N. Utilize engines for mop-up operations. 							
8. Special Instructions <ul style="list-style-type: none"> All supervisors ensure that personnel maintain safe distances during all air operations. Limit use of foam within 300 ft of any water source. Identify escape routes and safety zones. Ensure Finance is advised at end of shift with hours worked on USFWS land. Assess potential for snag hazards. Flag off snags and mitigate where possible. 							
9. Division/Group Communication Summary							
Function	Frequency	System	Channel	Function	Frequency	System	Channel
Command North South		KING NIFC	Command 10 North 11 South 12	Initial Attack		KING NIFC	5
Tactical Div/Group		KING NIFC	2	Air to Ground		KING NIFC	8
Prepared by (Resource Unit Leader) Kelli Palmer		Approved by (Planning Section Chief) Larry Such		Date 6/13/2011			Time 2030 hrs

DIVISION ASSIGNMENT LIST		1. Branch Suppression Branch		2. Division/Group Division C, M, N (Page 2 of 3)			
3. Incident Name PAINS BAY FIRE		4. Operational Period Date: 6/14/2011 Time: 0700-1900hrs					
5. Operations Personnel							
Operations Section Chiefs	Shane Hardee (6/19) Brent Triplett (t) (6/15)	Division/Group Supervisors	Jay Strider (6/19)				
Branch Director	Rickie Darden (6/19)	Safety	Dwight Bryant (6/19), Tater Maines (t) (6/19), Charles Stanton (6/18) Hunter Birkhead (6/21)				
6. Resources Assigned this Period							
Strike Team/Task Force/ Resource Designator	Leader	Request #	Number Persons	Last Work Day	Drop Off Time	Pick Up Time	
Task Force #1			6		0700 hrs	1900 hrs	
TFLD	Keith Money	O-383	1	6/22			
T6 ENG VAVAF Engine 11	J. Bier, T. Fultz, T. Williamson	E-6	3	6/21			
WAT3 NCS 13E1	C. Sellers	E-385,O-309	1	6/16			
WAT S2 Bush Fire KY-KIC	S. McKinney	E-648	1	7/11	0700hrs	1900hrs	
Flex Trac Strike Team #2							
Strike Team Leader	D. Foco	O-280	1	6/18	0700hrs	1900hrs	
Flex Trac DBR 13x65 (GoTrac)	T. Terrell	E-320	1		0700hrs	1900hrs	
Flex Trac DBR 13x67	Bryant/Spruill		1		0700hrs	1900hrs	
TPL2 NCS D-7 Strike Team		E-534	5	6/15	0700 hrs	1900 hrs	
STPL	S. Sheets						
TPL2 7x31	C. Scott						
TPL2 7x71	T. Rivels						
7. Control Operations							
<ul style="list-style-type: none"> Monitor and patrol for hotspots and spot-overs. Mop-up control line north of Navy Shell Rd. Install irrigation along fuel break line from Perimeter Rd to Ralph Rd. Be prepared to execute irrigation plan along NE corner of DIV N. Utilize engines for mop-up operations. 							
8. Special Instructions							
<ul style="list-style-type: none"> All supervisors ensure that personnel maintain safe distances during all air operations. Limit use of foam within 300 ft of any water source. Identify escape routes and safety zones. Ensure Finance is advised at end of shift with hours worked on USFWS land. Assess potential for snag hazards. Flag off snags and mitigate where possible. 							
9. Division/Group Communication Summary							
Function	Frequency	System	Channel	Function	Frequency	System	Channel
Command North South		KING NIFC	Command 10 North 11 South 12	Initial Attack		KING NIFC	5
Tactical Div/Group		KING NIFC	5	Air to Ground		KING NIFC	8
Prepared by (Resource Unit Leader) Kelli Palmer		Approved by (Planning Section Chief) Larry Such		Date 6/13/2011		Time 2030 hrs	

DIVISION ASSIGNMENT LIST		1. Branch		2. Division/Group Night Shift			
3. Incident Name PAINS BAY FIRE		4. Operational Period Date: 6/13 to 6/14/ 2011 Time: 1900 to 0700hrs					
5. Operations Personnel							
Operations Section Chiefs	Shane Hardee (6/19) Brent Triplett (t) (6/15)	Division/Group Supervisor	David Rooks				
Branch Director		Safety	Dwight Bryant (6/19), Tater Maines (t) (6/19), Charles Stanton (6/18) Hunter Birkhead (6/21)				
6. Resources Assigned this Period							
Strike Team/Task Force/ Resource Designator	Leader	Request #	Number Persons	Last Work Day	Drop Off Time	Pick Up Time	
Pump operator	R. Davis	O-314	1	6/17	1900	0700	
Pump operator	W. Canady	O-319	1	6/17	1900	0700	
Pump operator	B. Canady	O-316	1	6/17	1900	0700	
Pump operator	J. Chandler	O-317	1	6/17	1900	0700	
Mechanic	Chris Ward	E-595	1	6/17	1900	0700	
7. Control Operations							
<ul style="list-style-type: none"> Monitor pump operations on Div D/E, C, and A/B. US 264 has re-opened to public traffic. Be Alert. 							
8. Special Instructions							
<ul style="list-style-type: none"> STAY OFF IMPACT AREA FROM 2100 TO 0300. AREA IS HOT In case of an emergency utilize Dare County VFD radio (800 mhz) to contact County EOC. Work together. Provide adequate lighting prior to shutting down of pumps for servicing. Stay away from canal banks. Watch for rattlesnakes and bears. Do not throw food on ground or in canal. Keep smoke exposure to a minimum but do not stage on Hwy 264. Refer to Safety Message and Medical Plan for more detail. 							
9. Division/Group Communication Summary							
Function	Frequency	System	Channel	Function	Frequency	System	Channel
Command North South		KING NIFC	Command 10 North 11 South 12	Initial Attack		KING NIFC	5
Tactical Div/Group		KING NIFC	3	Air to Ground		KING NIFC	8
Prepared by (Resource Unit Leader) Kelli Palmer		Approved by (Planning Section Chief) Larry Such		Date 6/13/2011		Time 2030 hrs	

DIVISION ASSIGNMENT LIST			1. Branch Water Handling	2. Division/Group Water Handling (Page 1 of 2)			
3. Incident Name PAINS BAY FIRE			4. Operational Period Date: 6/14/2011 Time: 0700-1900hrs				
5. Operations Personnel							
Operations Section Chiefs	Shane Hardee (6/19) Brent Triplett (t) (6/15)		Division/Group Supervisor				
Branch Director	Brett Waters (6/21) Aaron Gay (6/16)		Safety		Dwight Bryant (6/19), Tater Maines (t) (6/19), Charles Stanton (6/18) Hunter Birckhead (6/21)		
6. Resources Assigned this Period							
Strike Team/Task Force/ Resource Designator	Leader	Request #	Number Persons	Last Work Day	Drop Off Time	Pick Up Time	
TF #1 TFLD	Jason Haywood	O-391	1	6/21	0700hrs	1900hrs	
Long Reach Excavator PVT	Netherland	E-511	1		0700hrs	1900hrs	
Long Reach Excavator PVT	Clayton				0700hrs	1900hrs	
Excavator DBR PA00736	B. Grubbs	E-204, O-308	1	6/16	0700hrs	1900hrs	
Dump Truck DBR	R. Pace	E-253, O-	1		0700hrs	1900hrs	
Dump Truck DBR	L. Lane	O-333	1	6/16	0700hrs	1900hrs	
Front End Loader DBR	J. Queen	O-311	1	6/17	0700hrs	1900hrs	
TPL2 NCS 13x62	B. Grubbs	E-228	1	local	0700hrs	1900hrs	
7. Control Operations							
<ul style="list-style-type: none"> • Maintain pumps and continue saturation along C, M, N. • Continue pumping along L and O. 							
8. Special Instructions							
<ul style="list-style-type: none"> • Ensure pump logs are turned in daily to Finance. • All supervisors ensure that personnel maintain safe distances during all air operations. • Winching: Analyze each situation before you act. Pay attention to hand location, maintain a safe distance from cables under tension, and maintain communications between operator and crewman. • Excavator Work: It's your responsibility to stay clear. The excavator can swing 360 degrees in about one second. Before approaching, make eye contact with operator and allow him to idle down and come to a complete stop. • Dump Truck Operations: Dump trucks have reduced visibility. All trucks should use a spotter while backing. At no time should anyone be behind a backing Vehicle! 							
9. Division/Group Communication Summary							
Function	Frequency	System	Channel	Function	Frequency	System	Channel
Command North South		KING NIFC	Command 10 North 11 South 12	Initial Attack		KING NIFC	5
Tactical Div/Group		KING NIFC	TAC 1	Air to Ground		KING NIFC	8
Prepared by (Resource Unit Leader) Kelli Palmer		Approved by (Planning Section Chief) Larry Such		Date 6/13/2011		Time 2030 hrs	

INCIDENT RADIO COMMUNICATIONS PLAN		1. Incident Name PAIN BAY FIRE		2. Date Time Prepared 6/13/2011 1800HRS		3. Operational Period Date/Time 6/14/2011	
6/12/2011							
System/cache	CH #	Function	Frequency	Tone	Mode	Assignment	Remarks
NCDNR	CH 1	TAC 1	RX: 151.4000	136.5	W	WATER HANDLING GRP.	
			TX: 151.4000	136.5			
NCDNR	CH 2	TAC 2	RX: 151.4600	136.5	W	Divs. D, C, F	
			TX: 151.4600	136.5			
NCDNR	CH 3	TAC 3	RX: 151.3100	136.5	W	Divs. M, and NIGHT SHIFT	
			TX: 151.3100	136.5			
NIFC	CH 4	TAC 4	RX: 168.0500	none	N	Divs. A, B, E	
			TX: 168.0500	136.5			
NIFC	CH 5	TAC 5	RX: 168.2000	none	N	Initial attack, & div. N	
			TX: 168.2000	136.5			
NIFC	CH 6	TAC 6	RX: 168.6000	none	N	Divs. O, K, L	
			TX: 168.6000	151.4			
NCDNR	CH 7	TAC 7	RX: 154.2800	none	W		FOR CONTINGENCY TO TALK TO VFDS IF NEEDED.
			TX: 154.2800	none			
NCDNR	CH 8	NCFS AIR/GROUND	RX: 171.5750	131.8	N	ALL DIVS.	PRIMARY AIR TO GROUND
			TX: 171.5750	131.8			
NIFC	CH 9	TAC 9	RX: 168.3500	none	N	Fire Line	
			TX: 168.3500	136.5			
NCDNR	CH 10	COMMAND 10	RX: 151.3250	136.5	W	OPERATIONS	PRIMARY COMMAND/STUMPY POINT
			TX: 159.3300	118.8			
US FWS	CH 11	COMMAND 11	RX: 172.6750	118.8	N	OPERATIONS	CMD. NORTH/COLUMBIA RPTR.
			TX: 168.5000	118.8			
US FWS	CH 12	COMMAND 12	RX: 164.6250	186.2	N	OPERATIONS	CMD. SOUTH/ENGELHARD RPTR.
			TX: 163.1500	186.2			
US FWS	CH 13	TAC 13	RX: 162.2375	156.7	N		
			TX: 162.2375	156.7			
NIFC	CH 14	COMMAND 14	RX: 167.1000	146.2	N		PORTABLE REPEATER FOR CONTINGINSY USE.
			TX: 169.7500	146.2			
US	CH 15	2ND. AIR/GROUND	RX: 169.9250	none	N	All Divs.	SECONDARY AIR TO GROUND
			TX: 169.9250	none			
US	CH 16	AIR GUARD	RX: 168.6250	none	N	AIR GUARD	EMERGENCY CONTACT WITH AIRCRAFT
			TX: 168.6250	110.9			
5. Prepared by (Communications Unit) DICK RUBLE / COML							
NOTE: COMMUNICATIONS MONITORS COMMAND 10.							

Note: This is not a standard NWCG ICS205 Form

MEDICAL PLAN	1. Incident Name Pains Bay Fire	2. Date Prepared 06/13/11	3. Time Prepared 1800	4. Operational Period Day/Night	
5. Incident Medical Aid Station					
Medical Aid Stations	Location			Paramedics Yes No	
Dare County Parks and Recreation Bldg (0630-2000hrs)	410 Airport Road Manteo, NC			X	
John Meredith, Line EMT 334-799-0214	Staged in Navy Range Area			X	
Steve Foster, Line EMT 979-236-8959	Staged in Air Force Range Area			X	
6. Transportation					
A. Ambulance Services					
Name	Address	Phone	Paramedics Yes No		
Dare County EMS Station #8	6677 Hwy 64 Business, Manns Harbor, NC	Dare Central (911)	X		
Dare County Med Flight	1078 Driftwood Dr., Manteo, NC	911	X		
B. Incident Ambulances					
Name	Location			Paramedics Yes No	
7. Hospitals					
Name	Address	Travel Time Air Ground	Phone	Helipad Yes No	Burn Center Yes No
Outer Banks Hospital	Mile Post 14, 4800 S. Croatan Hwy Nags Head, NC Latitude: N 35° 56' 20.33" Longitude: W 75° 45' 5.89"	15 30	(252) 449-4500	X	X
Sentara Norfolk General Hospital	Norfolk, VA TRAUMA BURN UNIT	30 90	(757) 388-3000	X	X
8. Medical Emergency Procedures					
<p>**FOR CRITICAL EMERGENCIES** Step 1. Report all injuries and illnesses to the closest DIVS. DIVS will notify the Line EMT and ICP Communications, and include the extent of the injury and transportation needed. Do not use patient's name on the radio. A medical emergency should be declared over the radio immediately. All radio traffic will be kept to a minimum so emergency procedures can proceed uninhibited. Step 2. ICP Communications will notify Dare Central Dispatch (911) and MEDL. Safety will be notified. Dare County EMS will respond and determine the appropriate treatment, transportation and facility needed. If ground transportation is determined, assign personnel to meet the ambulance at a location that is easily accessible to lead them to the site of the injured. If patient is transported to meet EMS, a personnel needs to remain with patient until EMS has arrived. One Line EMT is staged in the Navy Range area and another in the Air Force Range area to respond to injuries and stabilize patient until EMS personnel arrive. **FOR MINOR EMERGENCIES** Step 1. Patient - Will Advise Their Supervisor Step 2. Patient - Will Receive Care Step 3. Patient Supervisor/Patient - Will Advise Division Supervisor Step 4. Div. Sup/Patient Supervisor- Will Document Incident On 214 Step5. Div. Sup. /Patient's Supervisor - Will Advise The Medical Unit Leader At The End Of Each Shift Of ANY Illness or Injury And Of ANY Medical Care Given. **If transportation is needed it will be arranged by MEDL**</p> <p>Nighttime Operations: Communicate all emergency medical needs directly to Dare County Emergency Communications via 800mhz radio furnished by NCDNR Dare County Ranger, and contact Safety Officers Dwight Bryant 919-705-3324 or Tater Maines 828-499-0803 and Medical Unit Leader Randy Kearney 919-727-0954.</p> <p><u>ANY INJURY OR ILLNESS IN WHICH ANY TYPE OF CARE IS GIVEN WILL BE DOCUMENTED ON THE UNIT'S 214 AND THE MEDICAL UNIT LEADER WILL EITHER RECEIVE A COPY OF THE 214 OR BE ADVISED VERBALLY BY THE DIVISION SUPERVISOR, PATIENT'S SUPERVISOR OR PATIENT AT THE END OF EACH SHIFT.</u></p>					
Prepared by (Medical Unit Leader) Randy Kearney, MEDL			10. Reviewed by (Safety Officer) Dwight Bryant, SOF2, Tater Maines, SOF2		

AIR OPERATIONS SUMMARY		PREPARED BY: Mike Maguire AOBD(t)		PREPARED DATE/TIME: 6/13/2011 1700								
1. INCIDENT NAME Pains Bay		2. OPERATIONAL PERIOD DATE: 6/14/2011		SHIFT START TIME: 0800								
3. REMARKS (Safety Notes, Hazards, Air Operations Special Equipment, etc.) - Establish positive communication with Divisions and Operations when over fire. - Contact DOD towers when enter FTA. (122.9) "Navy Dare" or "Air force Dare" - ONLY USE APPROVED DIP SITES. - NOTE THAT SOME TOWERS ARE NOT MARKED ON SECTIONAL MAPS. (Can be 2500' Tall) - SQUAWK 1255 ensure warning lights are on. - "It takes everyone to say yes, only one to say no for all missions." M.M. • <u>Engelhard Airstrip: N35 33.74' X W75 57.31'</u> • <u>Edenton Airstrip: N36 01.72 X W76 34.19'</u> • <u>Currituck Airstrip: N36 23.94' X W76 0.98'</u>		SHIFT END TIME: 2000		SUNSET: 2020								
4. MEDEVAC A/C: Dare County Med Flight		5. TFR: NEW TFR TODAY <u>1/7784 A-75 3100' MSL</u> <i>Military Aircraft could be conducting flight operations above 4000' MSL over the TFR and could be conducting operations to the south of our TFR down to 500' MSL.</i>										
6. PERSONNEL		7. FREQUENCIES		8. FIXED WING # Available/ Type/ Make-Model/FAA N# / Bases								
AOBD(t): Mike Maguire 828-775-1871	Phone 805-479-1837	AM 123.125 122.425	FM	ALLIGATOR RIVER DISPATCH: 252-473-1744 X 21 Jae Naugle A/C 252-473-1840 / 252-473-1721								
ATGS: Rob Bickerstaffe HLCO/ ATGS: Carl Piper HLCO: Bob Perleberg HLCO(T): Billy Gardunio	828-989-1314 530-295-7273 530-604-8643	AIR/AIR PRIMARY A-8 AIR/AIR SECONDARY A-13 AIR/AIR RW: SEE ABOVE AIR/GROUND: Primary		Air Force Tower 252-473-2201 Navy Tower 252-473-2720 Kinston Operations Neil Barrow: 252-520-2402 x227/228 Jim Slye: 252-520-2402 x227/228								
HEB1: Tom Kennedy HEB2(T): Cory Waters	912-308-6036 252-475-0102	AIR/GROUND: Secondary COMMAND RPT SEE ICS 205	Rx: Tx:	ATGS Aircraft Location: MQI N135BA A-31								
DECK FREQ			168.6125	S.E.A.T.'S- Available Kinston 1000 to 1800 T-266 Available Kinston 1000 to 1800 Tina Phelps : 218-244-9882 H10 Helicopter 10 NC State IA Kinston 1000 to 1800								
Dare Bomb Range (DBR) Frequency: Contact tower to notify of presence. Travel from the helibase and Manteo airport into the fire area will now require clearance by DBR through the MOA before getting into the TFR which is now central to the DBR MOA.			122.900									
9. HELICOPTERS (Use Additional Sheets As Necessary)												
FAA N#	TY	MAKE/MODEL	BASE	AVAIL	START	REMARKS	TY	MAKE/MODEL	BASE	AVAIL	START	REMARKS
N1161KA A-26	1	K-Max	MQI	0800	0830	Marshall Wallace 509-668-1593	3	Bell 407	Pains HB	0830	0830	Carl Piper 530-295-7273
						Eric Bader 303-704-1164	3	Bell 206	Pains HB	0830	0830	Cory Waters 252-475-0102

Pains Bay Contact List
UPDATED 6/14/11

Position	Name	Cell #
COMMAND		
ICT2	Mike Hendricks	(919) 548-4190
PIO2	David Brown	(828) 273-0982
PIO2(t)	Brian Haines	(919) 218-9728
LOFR	Larry Such	(919) 320-5991
SOF2	Dwight Bryant	(919) 705-3324
SOF2	Charles Stanton	(509) 679-7191
SOF2(t)	Barry "Tater" Maines	(828) 499-0803
AGENCY ADMINISTRATORS		
NCDFR	David Lane	(919) 218-1760
FWS-Project Leader	Mike Bryant	(252) 216-7505
FWS-Dep. Proj Leader	Scott Lanier	(252) 216-7506
USFWS	Matt Connolly	(252) 799-8111
AGENCY REPRESENTATIVES		
FWS	Paul Pallas	(406) 366-1703
PIO2	Bonnie Strawser	(252) 216-8667
FWS Rehab Coordinator	Sue Wilder	(985) 373-1199
FWS	Dennis Stewart	(252) 473-1131x231
NCDFR	Rob Shackelford	(252) 216-5271
US Navy	Lt. Comdr. Marty Hill	(757) 433-1336
US Navy Int. Range Manager	Don Heaton	(386) 717-8799
NCDFR D13	Ed Christopher	(252) 542-0119
COOPERATORS		
Chief, Stumpy Pt FD	RD Price	(252) 216-7146
Dep. Chief Stumpy Pt FD	Curtis Price	(252) 216-7094 cell
		(252) 475-1040 home
Emergency Mgmt Coord	Sandy Sanderson	(252) 473-8326
Dare County Sheriff	Doug Doughtie	(252) 473-3444
USAF	Paul Loughery	(252) 216-8753 cell
		(252) 473-1906 office
Alligator River NWR	Office	(252) 473-1131
Alligator River NWR	Dispatch	(252) 473-1744x21
USFS San Dimas TDC	Robert Manwaring	(626) 225-0123
PLANS		
PSC2	Kevin Harvell	(336) 242-7428
PSC2	Larry Such	(919) 320-5991
RESL	Kelli Palmer	(828) 292-2950
SCKN(T)	Jonathan McCall	(828) 507-0970
SITL	Michael Cheek	(828) 231-2691
DOCL	Rob Roberson	(919) 636-0737
DOCL	Laura Hendrick	(252) 229-0161
DMOB	Michael Chesnutt	(910) 876-1505
IRIN	Audrey Gustafson	(218) 392-0150
FOBS	Caleb Jones	(828) 450-5210
FOBS	Trent Duncan	(828) 450-2315
GISS	Roger Hart	(910) 308-0003
GISS	Andrew Bailey	(919) 218-7069
FBAN	David Greathouse	(828) 413-2590
THSP	Gary Curcio	(919) 810-5623

Position	Name	Cell#
OPERATIONS		
OSC2	Shane Hardee	(910) 770-1880
OSC2(t)	Michael Good	(910) 308-0526
OSC2(t)	Brent Triplett	(828) 726-7240
OSC2	Tim Oliverius	(970) 739-1540
OPBD Suppression Branch	Rickie Darden	(910) 289-8819
OPBD Water Handling Branch	Brett Waters Aaron Gay (t)	(406) 581-6198 (252) 312-4369
DIVS	Scott Ellis	(828) 674-0541
DIVS	Kim Arrington	(252)-229-1437
DIVS	Jay Strider	(910) 220-6395
DIVS	Cecil Fulmer	(910) 890-0296
ICT4	Dwight Newman	(870) 715-9493
DIVS Night	David Rooks	(910) 540-4979
THSP	Marshall Gibbs	(252) 542-9658
AIR OPERATIONS		
AOBD	Mike Maguire	(828) 775-1871
ATGS	Rob Bickerstaff	(828) 989-1314
ATGS	Al Driesbach	(805) 961-5727
HEB1	Tom Kennedy	(912) 308-6036
FINANCE		
FSC2	Annie Lott	(919) 824-6633
PROC	Shelia Head	(252) 423-1237
TIME	Gina Rose	(252) 325-0329
TIME	Carolyn Cross	(406) 212-7352
COST	Beth Plummer	(704) 616- 0747
PTRC/EQTR	Susan Baker	(252) 542-0654
COMP	Kurt Hinz	(507) 696-3669
IBA	Dede Domingos	(541) 417-1628
IBA(t)	Helen Czernik	(252) 475-8339
CTSP	Tom James	(919) 218-9432
PA25	Christopher Frank	(414) 387-8414
LOGISTICS		
LSC2	Roger Harris	(828) 450-0013
LSC2	Robert Creech	(910) 640-7859
SPUL	Patrick Raynor	(336) 239-2377
ORDM	Tim Fleming	(828) 231-6217
COML	Dick Ruble	(919) 410-9725
COMT	Jim Smith	(336) 239-1847
RADO	Hugh Hassell	(252) 562-2149
FACL	Clyde Leggins	(828) 443-2294
FDUL	Alton Perry	(919) 218-5511
GSUL	Max Suttles	(828) 273-0685
EQPM	Ricky Honeycutt	(828) 450-2665
MEDL	Randy Kearney	(919) 727-0954
Line EMTB	John Meredith	(334) 799-0214
Line EMTB	Steve Foster	(979) 236-8959
SECM	George Hedges	#1:(205) 269-0728
		#2: (252) 619-4481

Section E-mail Addresses

DFRIMT.Command@ncdenr.gov
DFRIMT.Safety@ncdenr.gov
DFRIMT.Info@ncdenr.gov
DFRIMT.Ops@ncdenr.gov
DFRIMT.Plans@ncdenr.gov
DFRIMT.Finance@ncdenr.gov
DFRIMT.Logistics@ncdenr.gov
DFRIMT.Ordering@ncdenr.gov

ICP Communications (252) 473-1241
ICP Fax (252) 473-1162
NWR Dispatch (252) 473-1744x21
ICP Finance (252) 473-1237
ICP Demob (252) 473-1137

