

# PAINS BAY FIRE

NC-ALR-111006  
PRF3FT (1502)



## Incident Action Plan Wednesday

June 15, 2011  
0700-1900 hrs



<b>INCIDENT OBJECTIVES</b>	1. INCIDENT NAME <b>PAINS BAY FIRE</b>	2. DATE PREPARED <b>6/14/2011</b>	3. TIME PREPARED <b>1830</b>
<b>4. OPERATIONAL PERIOD (DATE/TIME)</b> <b>Wednesday, June 15, 2011 0700 to 1900 hrs</b>			
<b>5. GENERAL CONTROL OBJECTIVES FOR THE INCIDENT (INCLUDE ALTERNATIVES)</b>			
<p><b><u>Control Objectives</u></b></p> <ol style="list-style-type: none"> <li>1. Providing for the safety, health, and welfare of firefighters and general public is our highest priority: <ul style="list-style-type: none"> <li>• Adhere to the 10 Standard Fire Orders</li> <li>• Mitigate the 18 Watch-Out Situations</li> <li>• Implement and maintain LCES</li> <li>• Conduct frequent Risk Mgmt. Assessments</li> </ul> </li> <li>2. Coordinate with Dare Emergency Management Coordinator if fire threatens Stumpy Point village and evacuations appear necessary.</li> <li>3. Continue to provide LE presence at designated location on US 264 to implement immediate road closure if needed for escape fire, dense smoke/fog conditions..</li> <li>4. Keep fire contained west of US 264, south of US 64 and east of the Milltail Rd / Alligator Rd / Poplar Ridge Rd corridor.</li> <li>5. Provide for initial attack in areas as designated in the Delegation of Authority.</li> <li>6. Continue to implement written Water Handling Plan.</li> <li>7. Ensure that suppression &amp; containment strategies on FWS property follow minimum impact suppression tactics. Any escalation in tactics should consider progress made with current tactics and the likelihood of those tactics being successful.</li> <li>8. Provide for the protection of infrastructure devices, experimental tree plantations, and soil and water monitoring stations throughout USFWS property and infrastructure, structures, target, laser city, cameras, etc with Dept. of Defense (DOD) land.</li> <li>9. Coordinate the identification of potential suppression rehabilitation needs for both USFWS and DOD lands.</li> </ol> <p><b><u>Management Objectives</u></b></p> <ol style="list-style-type: none"> <li>1. Keep general public &amp; local officials in affected counties and incident stakeholders informed of fire status through situational updates and personal contacts.</li> <li>2. Provide for accurate cost tracking and documentation to meet the needs of USFWS and DOD. Ensure financial management conducted per Interagency Incident Business Handbook procedures.</li> <li>3. Emphasize cost containment through continual assessment of personnel and resource needs and the "right sizing" of incident staffing.</li> <li>4. Provide for a smooth transition with the incoming IMT.</li> <li>5. Work to allow military flight operation, even if limited, to resume when can be done safely within FAA regulations and without hindering suppression operations on DOD or USFWS lands.</li> </ol>			
<b>6. WEATHER FORECAST FOR OPERATIONAL PERIOD</b>			
MSunny, Max Temp 78, Min RH 51%, Winds NE 6-10 MPH			
<b>7. GENERAL SAFETY MESSAGE</b>			
<b>See Attached Tailgate Safety Briefing Sheet.</b>			
<b>8. ATTACHMENTS (X IF ATTACHED)</b>			
<input checked="" type="checkbox"/> ORGANIZATION LIST (ICS 203)	<input checked="" type="checkbox"/> MEDICAL PLAN (ICS 206)	<input checked="" type="checkbox"/> SAFETY MESSAGE	
<input checked="" type="checkbox"/> ASSIGNMENT LIST (ICS 204)	<input checked="" type="checkbox"/> INCIDENT MAP	<input checked="" type="checkbox"/> PHONE LIST	
<input checked="" type="checkbox"/> COMMUNICATIONS PLAN (ICS 205)	<input checked="" type="checkbox"/> AIR OPS SUMMARY (ICS 220)	<input checked="" type="checkbox"/> UNIT LOG (ICS 214)	
<b>9. PREPARED BY (PLANNING SECTION CHIEF)</b>	<b>10. APPROVED BY (INCIDENT COMMANDER)</b>		

ORGANIZATION ASSIGNMENT LIST		9. Operations Section	
<b>1. Incident Name:</b> <b>PAINS BAY FIRE</b>		Field Ops	Shane Hardee (6/15) Brent Triplett (6/15)
		Planning Ops	Tim Oliverius (6/20) Mike Good (t) (6/19)
		<b>a. Suppression Branch</b>	
<b>2. Date Prepared 6/14/11</b>	<b>3. Time 1700</b>	Branch Director	Rickie Darden (6/15)
<b>4. Operational Period Wednesday, 6/15/11 0700-1900</b>		Division/Group	<b>A,B,F</b> Kim Arrington (6/18)
<b>5. Command and General Staff</b>		Division/Group	<b>E</b> Kim Arrington (6/18)
Incident Commander	Mike Hendricks (6/22) George Custer	Division/Group	<b>K,L</b> Scott Ellis (6/19)
Deputy		Division/Group	<b>O</b> Scott Ellis (6/19)
Safety Officers	Dwight Bryant (6/19), Tater Maines (6/19), Charles Stanton (6/18) Hunter Birkhead (6/19)	Division/Group	<b>C,M,N</b> Jay Strider (6/19)
Liaison Officer	Larry Such (6/17)	Division/Group	
Information Officer	David Brown (6/19) Brian Haines (6/19)	Division/Group	
		ICT4	<b>Initial Attack</b> Dwight Newman (6/16)
		<b>b. Water Handling Branch</b>	
<b>6a. Agency Administrators</b>		Branch Director	Brett Waters (6/21) Aaron Gay (6/16)
US FWS	Mike Bryant, Scott Lanier, Matt Connolly	Division/Group	<b>Water Handling</b>
NC DFR	David Lane	Division/Group	<b>Night Shift</b> David Rooks (6/17)
<b>6b. Agency Representatives</b>		Division/Group	
US FWS	Paul Pallas	<b>c. Branch III</b>	
NC DFR D-13	Ed Christopher	Division/Group	
US FWS	Bonnie Strawser	Division/Group	
US FWS Rehab	Sue Wilder		
Dare EM	Sandy Sanderson	Division/Group	
Stumpy Pt. FD	Curtis Price	<b>d. Branch IV</b>	
US Navy	Lt. Cmdr. Marty Hill	Branch Director	
Interim Range Mgr	Don Heaton	Division/Group	
US Air Force	Joe Lafferty	Division/Group	
<b>7. Planning Section</b>		Division/Group	
Chief	Kevin Harvell (6/19) Darrell Schwilling	Division/Group	
Chief	Larry Such (6/19)	Division/Group	
Resources Unit	Kelli Palmer (6/19)	<b>e. Other Groups</b>	
Status Check-In	Jonathan McCall (t) (6/19)		
Situation Unit	Michael Cheek (6/19)		
GISS	Roger Hart(6/19) Andrew Bailey (6/19) Audrey Gustafson (6/16)		
Field Observers	Caleb Jones (6/19) Trent Duncan (6/19)	<b>f. Air Operations Branch</b>	
Fire Behavior	David Greathouse (6/19)	Air Ops Branch Directors	Mike Mcguire (6/25)
Smoke Analyst	Gary Curcio (6/22)	Air Tactical Grp Supervisor	Rob Bickerstaff (6/23)
Demobilization Unit	Michael Chesnutt (6/19)	Air Tactical Grp Supervisor	Donnie Harris (7/3)
Documentation Unit	Laura Hendrick (6/15) Rob Roberson (6/19)	Air Support Grp Supervisor	Al Driesbach (6/25)
<b>8. Logistics Section</b>		Helibase Manager	Tom Kennedy (6/24)
Chief	Roger Harris (6/19) Sally Browning	<b>10. Finance Section</b>	
Supply Unit	Patrick Raynor (6/19)	Chief	Annie Lott (6/19) James Meredith
Receiving & Dist		Purchasing Agent	Christopher Frank (6/17)
Ground Support Unit	Max Suttles (6/19)	Procurement Unit	Sheila Head (6/19)
Facilities Unit	Clyde Leggins (6/19)	Time Unit	Gina Rose (6/19)
Food Unit	Alton Pery (6/19)	Cost Unit	Beth Plummer (6/19)
Ordering Manager	Tim Flemming (6/19)	Equip/Pers Time Recorder	Susan Baker / Carolyn Cross
Communications Unit	Dick Ruble (6/19)	Incident Business Advisors	Helen Czernik (7/5) Dede Domingos (6/15)
Communications Tech	Jim Smith (6/19)	Computer Specialist	Tom James (6/19)
Radio Operator	Hugh Hassell (6/19)	<b>Prepared by:</b>	
Equipment Managers	Honeycutt (6/19) Rogers (t) (6/19) Evans (6/26)	Kelli Palmer	
Medical Unit	Randy Kearney (6/19)		
Security Mngr	George Hedges (6/21)		

## FIRE BEHAVIOR FORECAST

<b>FORECAST NUMBER:</b> 36	<b>TYPE OF FIRE:</b> Wildfire
<b>FIRE NAME:</b> Pains Bay	<b>OPERATIONAL PERIOD:</b> 6/15/11 Days
<b>DATE ISSUED:</b> 6/14/11	<b>TIME ISSUED:</b> 1800
<b>UNIT:</b> NCDNR	<b>SIGNED:</b> /s/ David Greathouse

### INPUTS

#### WEATHER SUMMARY:

**Southerly winds return tomorrow...**

**Today:** Mostly Sunny

Max Temp – 78, Min RH – 51%, Winds – NE 6-10mph

Mixing height – 6100'-7100', Transport Winds – N 9-14mph, Haines 4

**Tonight:** Partly cloudy, slight chance of Thunderstorms after midnight.

Min Temp – 63, Max RH – 96%, Winds N 5-9mph

**Be aware of the local sea breeze influence throughout the fire area.**

### OUTPUTS

#### FIRE BEHAVIOR

**GENERAL:**

This fire is burning mainly in Pocosin shrub fuels with a Pond Pine overstory. Severe drought conditions along with this volatile fuel type can produce rapid rates of spread and high flame lengths, even when relative humidity's are high and winds speeds are low. Organic soils in this area contribute to the fire intensity and will continue to for long periods of time under the current conditions

Yesterday active fire behavior such as flare ups in unburned islands, re-burning and continued smoldering in the organic soil was seen in the interior of the fire perimeter.

**SPECIFIC:**

**All Divisions:** Expect active burning in remaining green fuel and re-burn in browned and cured fuel as well as continued active fire and smoldering in organic soils.

**Divisions A, E, C, M:** Heads up while working these divisions today. Any quartering of the predicted North winds can put pressure on your lines today. Any torching near the fire line could loft embers across the fire line causing spot fires. Spotting can be up to .1 miles and the probability of ignition is 30%

Any fire that get established can see rates of spread of 12-26ch/hr and flame lengths of 10'-13'

#### NFDRS Indices (Fuel Model G)

	ERC-G	Burning Index
<b>Yesterday</b>	<b>40</b>	<b>40</b>
<b>Today</b>	<b>39</b>	<b>38</b>

**\*\*The current KBDI is 593\*\***

#### AIR OPERATIONS:

MVFR conditions can develop over the fire area due to smoke

### SAFETY

Fire Order # 2: Know what your fire is doing at all times.  
This is the basic order on which all other fire orders fall back on!

Local thresholds that shout watch out; Temp above 90 degrees, RH's below 25%, Winds greater than 7mph

# Safety Message

6/15/2011

**Tailgate Safety Briefings are required before starting work on your Division or fire assignment!**

**Hazards:**

<i>Complacency</i>	<i>Air Operations</i>	<i>Snags</i>	<i>Explosive Munitions</i>
<i>Driving</i>	<i>Hydration</i>	<i>Wildlife</i>	<i>Thunderstorms</i>
<i>Firing Operations</i>	<i>Fire Behavior</i>	<i>Heavy Equipment</i>	

**DRIVING** - Drive defensively. Use passenger as a lookout, navigator, and backing guide. Obey speed limits. Use headlights and seatbelts. 10 MPH in very dusty road conditions. Clean your windows. Watch out for Bears!

**FIRING OPERATIONS** – Ensure all resources are briefed prior to starting firing operation. LCES should be in place and reevaluated during operation.

**AIR OPERATIONS**- Stay away from bucket and retardant drop areas. Use air to ground frequency when communicating with aircraft. Stay safe distance from drop zones of tankers and helicopters.

**HYDRATION/HEAT STRESS** - Temperatures are on the rise. The body shuts down the thirst mechanism when you're dehydrated, therefore, be sure to drink a lot, before you get thirsty. 4:1 water to Powerade or Gatorade.

**FIRE BEHAVIOR** – Maintain situational awareness, follow 10 Standard Orders, recognize / mitigate the 18 Watch Out Situations, and apply LCES. Know the fire weather forecast. Monitor conditions. **Pumps** - Operators and Mechanics should be the only personnel near pumps. PTOs and exposed drive belts can injure you. Canal banks can collapse. Noise levels can be high. Shut down pumps to service.

**SNAGS** – Stay out of area, essential fire line personnel only. Look at root system before working/parking. Refer to IRPG Pg 20-21

**Complacency**- **Don't let your guard down or get complacent, stay alert and maintain your situational awareness.**

**Heavy Equipment**- Use sit awareness around volume pumps. Secure loose clothing PTO's and drive belts can injure you. Also use the 3 points of contact in mounting and dismounting equipment.

**Thunderstorms**- Observe the 30/30 rule. If you see lightning and hear thunder follow in less than 30 secs, take storm precautions indentified on page 19 of the IRPG.

**Wildlife Hazards**- Keep food items off the fireline. Watch footing in tall grass and brush. Insect repellent available at Med Unit.

Safety Officers Dwight Bryant, Tater Maines, Charles Stanton

# Pains Bay Fire Information Section

Wednesday June 15, 2011

If you see unescorted media on the fire, please refer them to a Public Information Officer, so an escort can be provided. **PIO contact information:**

- **David Brown**      **Cell – (828) 273-0982****Radio – Information Brown**
- **Brian Haines**      **Cell – (919) 218-9728****Radio – Information Haines**

Please review the talking points below and share this information with the public, if you are asked questions. Refer reporters to one of the Public Information Officers.

**Containment Goal** - The goal of the FWS, DoD, and NCDFR is to keep the Pains Bay Fire contained until there is sufficient rain to put it out. Smoke could affect surrounding communities as long as ground fire continues to burn.

**Ground Fire** - Ground fire occurs when organic soil (peat) burns due to drought conditions or alterations to the environment. Under natural, non-drought conditions, the peat is wet. But when the water table drops, the peat soil will dry out and become susceptible to ground fire. Ground fire may burn for long periods of time and cover large areas during drought conditions. Most of the smoke from the Pains Bay Fire is coming from ground fire in the interior of the burn.

**Aerial Water Drops** - Water drops from aircraft are used to slow the spread of the fire when it threatens to cross containment lines. Helicopters dip water from the closest available water source. If fresh water and brackish water are equally available, fresh water is the preferred source. Brackish water from Stumpy Point Bay or Pamlico Sound is used as needed to keep the fire within containment lines.

**Pumping Operation** – Pumping stations have been established to move water through canals and flood blocks of land to reinforce containment lines. Sources of water include, Stumpy Point Bay, canals northwest of Stumpy Point and Milltail Creek. An additional pumping station will be established to also draw water out of Whipping Creek. It is not possible to pump water over the entire Pains Bay Fire area to extinguish all the ground fire. The limiting factor is not the water supply. It is elevation, pumping capability and accessibility. Much of the active ground fire west of Stumpy Point and north of Highway 264 is higher than the surrounding terrain, and there are no canals in this area.

**Salt Water Concern** - Salt water is damaging to both the vegetation and the soil. "There are two main reasons not to put saltwater on the Pains Bay fire: 1) impacts to vegetation and 2) impacts to soils. These two impacts are not mutually exclusive. When saltwater is put on a peatland, the salt remains in the soil for a long period of time until it is flushed by a major storm event. During that time saltwater will poison shallow rooted freshwater wetland vegetation (including pond pine and shrub vegetation), creating more fuel loads for another potential wildfire. It will also inhibit post-fire recovery of the native vegetation. Saltwater rapidly degrades the peat through sulfate-reduction, causing land subsidence. In combination with the vegetation inhibition, this can leave the land and surrounding community (Stumpy Point) more vulnerable to coastal storms and could possibly lead to a rapid transition from pocosin habitat to open water." (Brian Boutin, TNC Sea Level Adaptation Study)

#####

<b>DIVISION ASSIGNMENT LIST</b>			1. Branch <b>Suppression Branch</b>		2. Division/Group <b>Division A, B, F</b>			
3. Incident Name <b>PAINS BAY FIRE</b>			4. Operational Period Date: 6/15/2011                      Time: 0700-1900hrs					
5. Operations Personnel								
Operations Section Chiefs		Shane Hardee (6/15) Brent Triplett (†) (6/15)		Division/Group Supervisor		Kim Arrington (6/18)		
Branch Director		Rickie Darden (6/15)		Safety		Dwight Bryant (6/19), Tater Maines (†) (6/19), Charles Stanton (6/18) Hunter Bircckhead (6/19)		
6. Resources Assigned this Period								
Strike Team/Task Force/ Resource Designator		Leader		Request #	Number Persons	Last Work Day	Drop Off Time	Pick Up Time
<b>Structure Protection</b>								
ICT4 / LIASON		R. Shackelford (off 6/13 to 6/14)			1		0700hrs	1900hrs
LOFR/ Deputy Fire Chief		Curtis Price			1		0700hrs	1900hrs
Dare County Fire Marshall		Doug Remaley						
ENG Stumpy Point VFD		Available			4		0700hrs	1900hrs
ENG Manns Harbor VFD		Available			5		0700hrs	1900hrs
ENG Roanoke Island VFD		Available			4		0700hrs	1900hrs
Dare County VFD Resources		Available					0700hrs	1900hrs
EMS Stumpy Point					2		0700hrs	1900hrs
FWS Boat				E-235				
7. Control Operations								
<ul style="list-style-type: none"> <li>• Be available to execute Stumpy Point Evacuation/PrePlan if identified trigger points are met.</li> <li>• Prepare PreFire Plan for Mann Harbour Community.</li> </ul>								
8. Special Instructions								
<ul style="list-style-type: none"> <li>• <b>In the event of an evacuation, contact will be made between Field Ops and ICT4 Shackelford on IC 10.</b></li> <li>• <b>All supervisors ensure that personnel maintain safe distances during all air operations.</b></li> <li>• <b>Pay special attention to road crews repairing guard rails on Hwy 264; there are smoke and visibility concerns.</b></li> <li>• <b>Mann's Harbor and Roanoke Island VFDs are call-when-needed.</b></li> <li>• <b>Limit use of foam within 300 ft of any water source.</b></li> </ul>								
9. Division/Group Communication Summary								
Function	Frequency	System	Channel	Function	Frequency	System	Channel	
Command North South		KING NIFC	<b>Command 10 North 11 South 12</b>	Initial Attack		KING NIFC	<b>5</b>	
Tactical Div/Group		KING NIFC	<b>4</b>	Air to Ground		KING NIFC	<b>8</b>	
Prepared by (Resource Unit Leader) Kelli Palmer		Approved by (Planning Section Chief) Larry Such			Date 6/14/2011		Time 2030 hrs	

<b>DIVISION ASSIGNMENT LIST</b>		1. Branch <b>Suppression Branch</b>	2. Division/Group <b>Division C, M, N (Page 1 of 3)</b>				
3. Incident Name <b>PAINS BAY FIRE</b>		4. Operational Period Date: 6/15/2011 Time: 0700-1900hrs					
5. Operations Personnel							
Operations Section Chiefs	Shane Hardee (6/15) Brent Triplett (t) (6/15)	Division/Group Supervisor	Jay Strider (6/19)				
Branch Director	Rickie Darden (6/15)	Safety	Dwight Bryant (6/19), Tater Maines (t) (6/19), Charles Stanton (6/18) Hunter Birkhead (6/21)				
6. Resources Assigned this Period							
Strike Team/Task Force/ Resource Designator	Leader	Request #	Number Persons	Last Work Day	Drop Off Time	Pick Up Time	
<b>ENG6 Strike Team Interagency #1</b>					0700hrs	1900hrs	
STEN	Lee Colson	O-384	1	6/25			
ENG6 SC-FMF	Hammond, Abbott, Danaher	E-13	3	6/20			
Eng6 VAVAF Eng 31	Wright, Henning, Showalter, Whitmore	E-536	4	6/19			
ENG6 VASHP Engine 41	Rudacille, Hall, McCoy	E-9	3	6/18			
Marshmaster DBR	C. Abbott	E-222					
Mop-up Truck NCS		E-359	0				
D-13 mop up trailer NCS #1		E-239					
Mop up trailer D-13 #2		E-240			0700hrs	1900hrs	
(3) 6" Pumps		E-5151 E-5192 E-338					
(3) 2.5 " Pumps			0				
7. Control Operations <ul style="list-style-type: none"> <li>Monitor and patrol for hotspots and spot-overs.</li> <li>Mop-up control line north of Navy Shell Rd.</li> <li>Install irrigation along fuel break line from Perimeter Rd to Ralph Rd.</li> <li>Be prepared to execute irrigation plan along NE corner of DIV N.</li> <li>Utilize engines for mop-up operations.</li> </ul>							
8. Special Instructions <ul style="list-style-type: none"> <li><b>All supervisors ensure that personnel maintain safe distances during all air operations.</b></li> <li><b>Limit use of foam within 300 ft of any water source.</b></li> <li><b>Identify escape routes and safety zones.</b></li> <li><b>Ensure Finance is advised at end of shift with hours worked on USFWS land.</b></li> <li><b>Assess potential for snag hazards. Flag off snags and mitigate where possible.</b></li> </ul>							
9. Division/Group Communication Summary							
Function	Frequency	System	Channel	Function	Frequency	System	Channel
Command North South		KING NIFC	<b>Command 10 North 11 South 12</b>	Initial Attack		KING NIFC	<b>5</b>
Tactical Div/Group		KING NIFC	<b>2</b>	Air to Ground		KING NIFC	<b>8</b>
Prepared by (Resource Unit Leader) Kelli Palmer		Approved by (Planning Section Chief) Larry Such		Date 6/14/2011		Time 2030 hrs	





















DIVISION ASSIGNMENT LIST			1. Branch <b>Water Handling</b>	2. Division/Group <b>Water Handling (Page 1 of 2)</b>			
3. Incident Name <b>PAINS BAY FIRE</b>			4. Operational Period Date: 6/15/2011                      Time: 0700-1900hrs				
5. Operations Personnel							
Operations Section Chiefs	Shane Hardee (6/15) Brent Triplett (t) (6/15)		Division/Group Supervisor				
Branch Director	Brett Waters (6/21) Aaron Gay (6/16)		Safety		Dwight Bryant (6/19), Tater Maines (t) (6/19), Charles Stanton (6/18) Hunter Birckhead (6/19)		
6. Resources Assigned this Period							
Strike Team/Task Force/ Resource Designator	Leader	Request #	Number Persons	Last Work Day	Drop Off Time	Pick Up Time	
<b>TF #1 TFLD</b>	Jason Haywood	O-391	1	6/21	0700hrs	1900hrs	
Long Reach Excavator PVT	Netherland	E-511	1		0700hrs	1900hrs	
Long Reach Excavator PVT	Clayton				0700hrs	1900hrs	
Excavator DBR PA00736	R. Howard	E-204, O-308	1	6/16	0700hrs	1900hrs	
Dump Truck DBR	R. Pace	E-253, O-	1		0700hrs	1900hrs	
Dump Truck DBR	L. Lane	O-333	1	6/16	0700hrs	1900hrs	
Front End Loader DBR	J. Queen	O-311	1	6/17	0700hrs	1900hrs	
TPL2 NCS 13x62	B. Grubbs	E-228	1	local	0700hrs	1900hrs	
DOZ2 NCS 9x1	S. McDonald	E-667	1		0700hrs	1900hrs	
7. Control Operations							
<ul style="list-style-type: none"> <li>• Maintain pumps and continue saturation along C, M, N.</li> <li>• Continue pumping along L and O.</li> </ul>							
8. Special Instructions							
<ul style="list-style-type: none"> <li>• <b>Ensure pump logs are turned in daily to Finance.</b></li> <li>• <b>All supervisors ensure that personnel maintain safe distances during all air operations.</b></li> <li>• <b>Winching: Analyze each situation before you act. Pay attention to hand location, maintain a safe distance from cables under tension, and maintain communications between operator and crewman.</b></li> <li>• <b>Excavator Work: It's your responsibility to stay clear. The excavator can swing 360 degrees in about one second. Before approaching, make eye contact with operator and allow him to idle down and come to a complete stop.</b></li> <li>• <b>Dump Truck Operations: Dump trucks have reduced visibility. All trucks should use a spotter while backing. At no time should anyone be behind a backing Vehicle!</b></li> </ul>							
9. Division/Group Communication Summary							
Function	Frequency	System	Channel	Function	Frequency	System	Channel
Command North South		KING NIFC	<b>Command 10 North 11 South 12</b>	Initial Attack		KING NIFC	<b>5</b>
Tactical Div/Group		KING NIFC	<b>TAC 1</b>	Air to Ground		KING NIFC	<b>8</b>
Prepared by (Resource Unit Leader) Kelli Palmer		Approved by (Planning Section Chief) Larry Such		Date 6/14/2011		Time 2030 hrs	

<b>DIVISION ASSIGNMENT LIST</b>			1. Branch	2. Division/Group <b>WATER HANDLING (Page 2 of 2)</b>			
3. Incident Name <b>PAINS BAY FIRE</b>			4. Operational Period Date: 6/15 2011                      Time: 0700 to 1900hrs				
5. Operations Personnel							
Operations Section Chiefs	Shane Hardee (6/15) Brent Triplett (t) (6/15)		Division/Group Supervisor				
Branch Director	Brett Waters (6/21) Aaron Gay (6/16)		Safety		Dwight Bryant (6/19), Tater Maines (t) (6/19), Charles Stanton (6/18) Hunter Bircckhead (6/19)		
6. Resources Assigned this Period							
Strike Team/Task Force/ Resource Designator	Leader	Request #	Number Persons	Last Work Day	Drop Off Time	Pick Up Time	
<b>TF #2 TFLD</b>	M. Johnson	O-331	1	6/21	0700hrs	1900hrs	
Pump Operator	J. Sommerville	O-379	1	6/21	0700hrs	1900hrs	
Pump Operator	D. Brasington	O-315	1	6/16	0700hrs	1900hrs	
Mechanic	T. Bryant	E-629	1	6/20	0700hrs	1900hrs	
Mechanic	J. Rosencrans	E-630	1	6/22	0700hrs	1900hrs	
WHSP	R. Black	O-380	1	6/21	0700hrs	1900hrs	
WHSP	W. P. Truxton	O-420	1	6/28	0700hrs	1900hrs	
(3) 24" Pumps							
(1) 18" Pumps							
(42) 16" Pumps							
7. Control Operations							
<ul style="list-style-type: none"> <li>• Maintain pumps and continue saturation along C, M, N.</li> <li>• Continue pumping along L and O.</li> </ul>							
8. Special Instructions							
<ul style="list-style-type: none"> <li>• <b>Ensure pump logs are turned in daily to Finance.</b></li> <li>• <b>All supervisors ensure that personnel maintain safe distances during all air operations.</b></li> <li>• <b>Excavator Work: It's your responsibility to stay clear. The excavator can swing 360° in about one second. Before approaching, make eye contact with operator and allow him to idle down and come to a complete stop.</b></li> <li>• <b>Dump Truck Operations: Dump trucks have reduced visibility; use a spotter while backing. At no time should anyone be behind a backing Vehicle!</b></li> </ul>							
9. Division/Group Communication Summary							
Function	Frequency	System	Channel	Function	Frequency	System	Channel
Command North South		KING NIFC	<b>Command 10 North 11 South 12</b>	Initial Attack		KING NIFC	<b>5</b>
Tactical Div/Group		KING NIFC	<b>TAC 1</b>	Air to Ground		KING NIFC	<b>8</b>
Prepared by (Resource Unit Leader) Kelli Palmer		Approved by (Planning Section Chief) Larry Such		Date 6/14/2011		Time 2030 hrs	

INCIDENT RADIO COMMUNICATIONS PLAN		1. Incident Name PAIN BAY FIRE		2. Date Time Prepared 6/14/2011		3. Operational Period Date/Time 6/15/2011	
System/cache	CH #	Function	Frequency	Tone	Mode	Assignment	Remarks
NCDNR	CH 1	TAC 1	RX: 151.4000	136.5	W	WATER HANDLING GRP.	
			TX: 151.4000	136.5			
NCDNR	CH 2	TAC 2	RX: 151.4600	136.5	W	Divs. C, M, N	
			TX: 151.4600	136.5			
NCDNR	CH 3	TAC 3	RX: 151.3100	136.5	W	NIGHT SHIFT	
			TX: 151.3100	136.5			
NIFC	CH 4	TAC 4	RX: 168.0500	none	N	Divs. A, B, E, F	
			TX: 168.0500	136.5			
NIFC	CH 5	TAC 5	RX: 168.2000	none	N	Initial Attack	
			TX: 168.2000	136.5			
NIFC	CH 6	TAC 6	RX: 168.6000	none	N	Divs. O, K, L	
			TX: 168.6000	151.4			
NCDNR	CH 7	TAC 7	RX: 154.2800	none	W		FOR CONTINGENCY TO TALK TO VFDS IF NEEDED.
			TX: 154.2800	none			
NCDNR	CH 8	NCFS AIR/GROUND	RX: 171.5750	131.8	N	ALL DIVS.	PRIMARY AIR TO GROUND
			TX: 171.5750	131.8			
NIFC	CH 9	TAC 9	RX: 168.3500	none	N	Fire Line	
			TX: 168.3500	136.5			
NCDNR	CH 10	COMMAND 10	RX: 151.3250	136.5	W	OPERATIONS	PRIMARY COMMAND/STUMPY POINT
			TX: 159.3300	118.8			
US FWS	CH 11	COMMAND 11	RX: 172.6750	118.8	N	OPERATIONS	CMD. NORTH/COLUMBIA RPTR.
			TX: 168.5000	118.8			
US FWS	CH 12	COMMAND 12	RX: 164.6250	186.2	N	OPERATIONS	CMD. SOUTH/ENGELHARD RPTR.
			TX: 163.1500	186.2			
US FWS	CH 13	TAC 13	RX: 162.2375	156.7	N		
			TX: 162.2375	156.7			
NIFC	CH 14	COMMAND 14	RX: 167.1000	146.2	N		PORTABLE REPEATER FOR CONTINGENCY USE
			TX: 169.7500	146.2			
US	CH 15	2ND. AIR/GROUND	RX: 169.9250	none	N	All Divs.	SECONDARY AIR TO GROUND
			TX: 169.9250	none			
US	CH 16	AIR GUARD	RX: 168.6250	none	N	AIR GUARD	EMERGENCY CONTACT WITH AIRCRAFT
			TX: 168.6250	110.9			
5. Prepared by (Communications Unit) DICK RUBLE / COML							
NOTE: COMMUNICATIONS MONITORS COMMAND 10.							

Note: This is not a standard NWCG ICS205 Form

<b>MEDICAL PLAN</b>	1. Incident Name	2. Date Prepared	3. Time Prepared	4. Operational Period					
	Pains Bay Fire	06/14/11	1800	Day/Night					
5. Incident Medical Aid Station									
Medical Aid Stations		Location			Paramedics				
					Yes	No			
Dare County Parks and Recreation Bldg (0630-2000hrs)		410 Airport Road Manteo, NC				X			
John Meredith, Line EMT 334-799-0214		Staged in Navy Range Area				X			
Steve Foster, Line EMT 979-236-8959		Staged in Air Force Range Area				X			
6. Transportation									
A. Ambulance Services									
Name		Address		Phone	Paramedics				
					Yes	No			
Dare County EMS Station #8		6677 Hwy 64 Business, Manns Harbor, NC		Dare Central (911)	X				
Dare County Med Flight		1078 Driftwood Dr., Manteo, NC		911	X				
B. Incident Ambulances									
Name		Location			Paramedics				
					Yes	No			
7. Hospitals									
Name		Address		Travel Time		Helipad		Burn Center	
				Air	Ground	Yes No		Yes	No
Outer Banks Hospital		Mile Post 14, 4800 S. Croatan Hwy Nags Head, NC Latitude: N 35° 56' 20.33" Longitude: W 75° 45' 5.89"		15	30	(252) 449-4500		X	
Sentara Norfolk General Hospital		Norfolk, VA <b>TRAUMA BURN UNIT</b>		30	90	(757) 388-3000		X	X
8. Medical Emergency Procedures									
<p><b>**FOR CRITICAL EMERGENCIES** Step 1.</b> Report all injuries and illnesses to the closest DIVS. DIVS will notify the Line EMT and ICP Communications, and include the extent of the injury and transportation needed. Do not use patient's name on the radio. A medical emergency should be declared over the radio immediately. All radio traffic will be kept to a minimum so emergency procedures can proceed uninhibited. <b>Step 2.</b> ICP Communications will notify Dare Central Dispatch (911) and MEDL. Safety will be notified. Dare County EMS will respond and determine the appropriate treatment, transportation and facility needed. If ground transportation is determined, assign personnel to meet the ambulance at a location that is easily accessible to lead them to the site of the injured. If patient is transported to meet EMS, a personnel needs to remain with patient until EMS has arrived. One Line EMT is staged in the Navy Range area and another in the Air Force Range area to respond to injuries and stabilize patient until EMS personnel arrive. <b>**FOR MINOR EMERGENCIES** Step 1.</b> Patient - Will Advise Their Supervisor <b>Step 2.</b> Patient - Will Receive Care <b>Step 3.</b> Patient Supervisor/Patient - Will Advise Division Supervisor <b>Step 4.</b> Div. Sup/Patient Supervisor- Will Document Incident On 214 <b>Step5.</b> Div. Sup. /Patient's Supervisor - Will Advise The Medical Unit Leader At The End Of Each Shift Of ANY Illness or Injury And Of ANY Medical Care Given. <b>**If transportation is needed it will be arranged by MEDL**</b></p> <p><b>Nighttime Operations:</b> Communicate all emergency medical needs directly to Dare County Emergency Communications via 800mhz radio furnished by NCDNR Dare County Ranger, and contact Safety Officers Dwight Bryant 919-705-3324 or Tater Maines 828-499-0803 and Medical Unit Leader Randy Kearney 919-727-0954.</p> <p><u>ANY INJURY OR ILLNESS IN WHICH ANY TYPE OF CARE IS GIVEN WILL BE DOCUMENTED ON THE UNIT'S 214 AND THE MEDICAL UNIT LEADER WILL EITHER RECEIVE A COPY OF THE 214 OR BE ADVISED VERBALLY BY THE DIVISION SUPERVISOR, PATIENT'S SUPERVISOR OR PATIENT AT THE END OF EACH SHIFT.</u></p>									
Prepared by (Medical Unit Leader)					10. Reviewed by (Safety Officer)				
Randy Kearney, MEDL					Dwight Bryant, SOF2, Tater Maines, SOF2				



**Pains Bay Contact List**  
**UPDATED 6/14/11**

Position	Name	Cell #
<b>COMMAND</b>		
ICT2	Mike Hendricks	(919) 548-4190
ICT2	George Custer	(404) 805-5714
PIO2	David Brown	(828) 273-0982
PIO2(t)	Brian Haines	(919) 218-9728
LOFR	Larry Such	(919) 320-5991
SOF2	Dwight Bryant	(919) 705-3324
SOF2	Charles Stanton	(509) 679-7191
SOF2(t)	Barry "Tater" Maines	(828) 499-0803
<b>AGENCY ADMINISTRATORS</b>		
NCDFR	David Lane	(919) 218-1760
FWS-Project Leader	Mike Bryant	(252) 216-7505
FWS-Dep. Proj Leader	Scott Lanier	(252) 216-7506
USFWS	Matt Connolly	(252) 799-8111
<b>AGENCY REPRESENTATIVES</b>		
FWS	Paul Pallas	(406) 366-1703
PIO2	Bonnie Strawser	(252) 216-8667
FWS Rehab Coordinator	Sue Wilder	(985) 373-1199
FWS	Dennis Stewart	(252) 473-1131x231
NCDFR	Rob Shackelford	(252) 216-5271
US Navy	Lt. Comdr. Marty Hill	(757) 433-1336
US Navy Int. Range Manager	Don Heaton	(386) 717-8799
NCDFR D13	Ed Christopher	(252) 542-0119
<b>COOPERATORS</b>		
Chief, Stumpy Pt FD	RD Price	(252) 216-7146
Dep. Chief Stumpy Pt FD	Curtis Price	(252) 216-7094 cell
		(252) 475-1040 home
Emergency Mgmt Coord	Sandy Sanderson	(252) 473-8326
Dare County Sheriff	Doug Doughtie	(252) 473-3444
USAF	Paul Loughery	(252) 216-8753 cell
		(252) 473-1906 office
Alligator River NWR	Office	(252) 473-1131
Alligator River NWR	Dispatch	(252) 473-1744x21
USFS San Dimas TDC	Robert Manwaring	(626) 225-0123
<b>PLANS</b>		
PSC2	Kevin Harvell	(336) 242-7428
PSC2	Larry Such	(919) 320-5991
PSC2	Darrell Schwilling	(404) 805-3159
RESL	Kelli Palmer	(828) 292-2950
SCKN(T)	Jonathan McCall	(828) 507-0970
SITL	Michael Cheek	(828) 231-2691
DOCL	Rob Roberson	(919) 636-0737
DOCL	Laura Hendrick	(252) 229-0161
DMOB	Michael Chesnutt	(910) 876-1505
IRIN	Audrey Gustafson	(218) 392-0150
FOBS	Caleb Jones	(828) 450-5210
FOBS	Trent Duncan	(828) 450-2315
GISS	Roger Hart	(910) 308-0003
GISS	Andrew Bailey	(919) 218-7069
FBAN	David Greathouse	(828) 413-2590
THSP	Gary Curcio	(919) 810-5623

Position	Name	Cell#
<b>OPERATIONS</b>		
OSC2	Shane Hardee	(910) 770-1880
OSC2(t)	Michael Good	(910) 308-0526
OSC2(t)	Brent Triplett	(828) 726-7240
OSC2	Tim Oliverius	(970) 739-1540
OPBD Suppression Branch	Rickie Darden	(910) 289-8819
OPBD Water Handling Branch	Brett Waters Aaron Gay (t)	(406) 581-6198 (252) 312-4369
DIVS	Scott Ellis	(828) 674-0541
DIVS	Kim Arrington	(252)-229-1437
DIVS	Jay Strider	(910) 220-6395
DIVS	Cecil Fulmer	(910) 890-0296
ICT4	Dwight Newman	(870) 715-9493
DIVS Night	David Rooks	(910) 540-4979
THSP	Marshall Gibbs	(252) 542-9658
<b>AIR OPERATIONS</b>		
AOBD	Mike Maguire	(828) 775-1871
ATGS	Rob Bickerstaff	(828) 989-1314
ATGS	Al Driesbach	(805) 961-5727
HEB1	Tom Kennedy	(912) 308-6036
<b>FINANCE</b>		
FSC2	Annie Lott	(919) 824-6633
FSC2	James Meredith	(404) 805-6816
FSC2	Sally Browning	(404) 805-5063
PROC	Shelia Head	(252) 423-1237
TIME	Gina Rose	(252) 325-0329
TIME	Carolyn Cross	(406) 212-7352
COST	Beth Plummer	(704) 616- 0747
PTRC/EQTR	Susan Baker	(252) 542-0654
COMP	Kurt Hinz	(507) 696-3669
IBA	Dede Domingos	(541) 417-1628
IBA(t)	Helen Czernik	(252) 475-8339
CTSP	Tom James	(919) 218-9432
PA25	Christopher Frank	(414) 387-8414
<b>LOGISTICS</b>		
LSC2	Roger Harris	(828) 450-0013
LSC2	Robert Creech	(910) 640-7859
SPUL	Patrick Raynor	(336) 239-2377
ORDM	Tim Fleming	(828) 231-6217
COML	Dick Ruble	(919) 410-9725
COMT	Jim Smith	(336) 239-1847
RADO	Hugh Hassell	(252) 562-2149
FACL	Clyde Leggins	(828) 443-2294
FDUL	Alton Perry	(919) 218-5511
GSUL	Max Suttles	(828) 273-0685
EQPM	Ricky Honeycutt	(828) 450-2665
MEDL	Randy Kearney	(919) 727-0954
Line EMTB	John Meredith	(334) 799-0214
Line EMTB	Steve Foster	(979) 236-8959
SECM	George Hedges	#1: (205) 269-0728
		#2: (252) 619-4481

**Section E-mail Addresses**

[DFRIMT.Command@ncdenr.gov](mailto:DFRIMT.Command@ncdenr.gov)  
[DFRIMT.Safety@ncdenr.gov](mailto:DFRIMT.Safety@ncdenr.gov)  
[DFRIMT.Info@ncdenr.gov](mailto:DFRIMT.Info@ncdenr.gov)  
[DFRIMT.Ops@ncdenr.gov](mailto:DFRIMT.Ops@ncdenr.gov)  
[DFRIMT.Plans@ncdenr.gov](mailto:DFRIMT.Plans@ncdenr.gov)  
[DFRIMT.Finance@ncdenr.gov](mailto:DFRIMT.Finance@ncdenr.gov)  
[DFRIMT.Logistics@ncdenr.gov](mailto:DFRIMT.Logistics@ncdenr.gov)  
[DFRIMT.Ordering@ncdenr.gov](mailto:DFRIMT.Ordering@ncdenr.gov)

**ICP Communications** (252) 473-1241  
**ICP Fax** (252) 473-1162  
**NWR Dispatch** (252) 473-1744x21  
**ICP Finance** (252) 473-1237  
**ICP Demob** (252) 473-1137

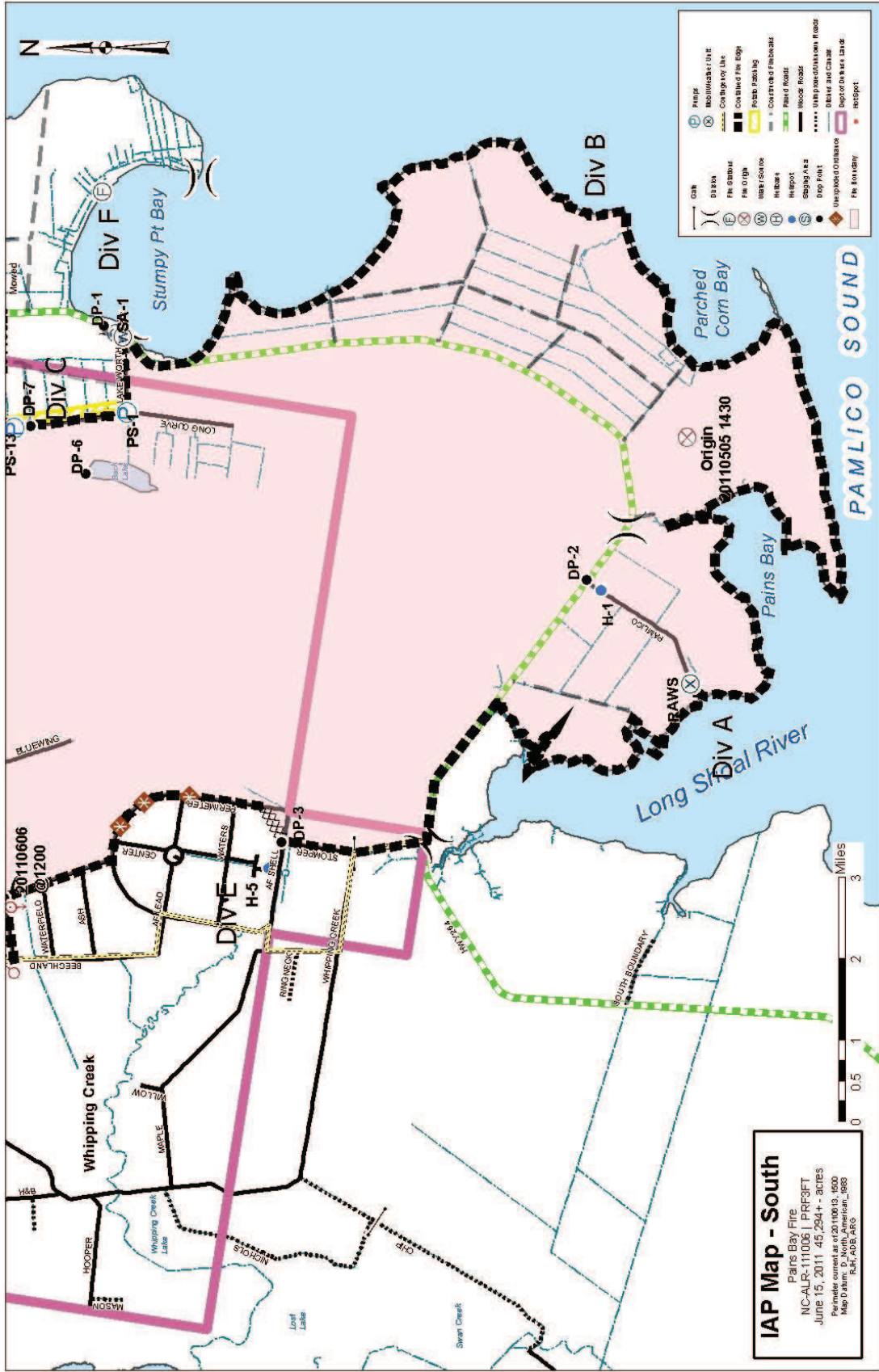












**IAP Map - South**  
 Pains Bay Fire  
 NC-ALR-11006 | PFP3FT  
 June 15, 2011 45,294+ - acres  
 Perimeter current as of 20100613\_1600  
 Map Datum: D:\North\_American\_9883  
 Plan: A31, A32