

# PAINS BAY FIRE

NC-ALR-111006  
PRF3FT (1502)



Roanoke Island  
Home of the first English Colony, first English newborn in the New World,  
and the Lost Colony

## Incident Action Plan Friday

June 17, 2011  
0700-1900 hrs



<b>INCIDENT OBJECTIVES</b>	1. INCIDENT NAME <b>PAINS BAY FIRE</b>	2. DATE PREPARED <b>6/16/2011</b>	3. TIME PREPARED <b>1830</b>
<b>4. OPERATIONAL PERIOD (DATE/TIME)</b> <b>Friday, June 17, 2011 0700 to 1900 hrs</b>			
<b>5. GENERAL CONTROL OBJECTIVES FOR THE INCIDENT (INCLUDE ALTERNATIVES)</b>			
<p><b><u>Control Objectives</u></b></p> <ol style="list-style-type: none"> <li>1. Providing for the safety, health, and welfare of firefighters and general public is our highest priority: <ul style="list-style-type: none"> <li>• Adhere to the 10 Standard Fire Orders</li> <li>• Mitigate the 18 Watch-Out Situations</li> <li>• Implement and maintain LCES</li> <li>• Conduct frequent Risk Mgmt. Assessments</li> </ul> </li> <li>2. Coordinate with Dare Emergency Management Coordinator if fire threatens Stumpy Point village and evacuations appear necessary.</li> <li>3. Continue to provide LE presence at designated location on US 264 to implement immediate road closure if needed for escape fire, dense smoke/fog conditions..</li> <li>4. Keep fire contained west of US 264, south of US 64 and east of the Milltail Rd / Alligator Rd / Poplar Ridge Rd corridor.</li> <li>5. Provide for initial attack in areas as designated in the Delegation of Authority.</li> <li>6. Continue to implement written Water Handling Plan.</li> <li>7. Ensure that suppression &amp; containment strategies on FWS property follow minimum impact suppression tactics. Any escalation in tactics should consider progress made with current tactics and the likelihood of those tactics being successful.</li> <li>8. Provide for the protection of infrastructure devices, experimental tree plantations, and soil and water monitoring stations throughout USFWS property and infrastructure, structures, target, laser city, cameras, etc with Dept. of Defense (DOD) land.</li> <li>9. Coordinate the identification of potential suppression rehabilitation needs for both USFWS and DOD lands.</li> </ol> <p><b><u>Management Objectives</u></b></p> <ol style="list-style-type: none"> <li>1. Keep general public &amp; local officials in affected counties and incident stakeholders informed of fire status through situational updates and personal contacts.</li> <li>2. Provide for accurate cost tracking and documentation to meet the needs of USFWS and DOD. Ensure financial management conducted per Interagency Incident Business Handbook procedures.</li> <li>3. Emphasize cost containment through continual assessment of personnel and resource needs and the "right sizing" of incident staffing.</li> <li>4. Provide for a smooth transition with the incoming IMT.</li> <li>5. Work to allow military flight operation, even if limited, to resume when can be done safely within FAA regulations and without hindering suppression operations on DOD or USFWS lands.</li> </ol>			
<b>6. WEATHER FORECAST FOR OPERATIONAL PERIOD</b>			
MSunny, Chance of Tstms, Max Temp 88, Min RH 46%, Winds s 8-13 MPH			
<b>7. GENERAL SAFETY MESSAGE</b>			
<b>See Attached Tailgate Safety Briefing Sheet.</b>			
<b>8. ATTACHMENTS (X IF ATTACHED)</b>			
<input checked="" type="checkbox"/> ORGANIZATION LIST (ICS 203)	<input checked="" type="checkbox"/> MEDICAL PLAN (ICS 206)	<input checked="" type="checkbox"/> SAFETY MESSAGE	
<input checked="" type="checkbox"/> ASSIGNMENT LIST (ICS 204)	<input checked="" type="checkbox"/> INCIDENT MAP	<input checked="" type="checkbox"/> PHONE LIST	
<input checked="" type="checkbox"/> COMMUNICATIONS PLAN (ICS 205)	<input checked="" type="checkbox"/> AIR OPS SUMMARY (ICS 220)	<input checked="" type="checkbox"/> UNIT LOG (ICS 214)	
<b>9. PREPARED BY (PLANNING SECTION CHIEF)</b>	<b>10. APPROVED BY (INCIDENT COMMANDER)</b>		

ORGANIZATION ASSIGNMENT LIST		9. Operations Section	
<b>1. Incident Name:</b> <b>PAINS BAY FIRE</b>		Field Ops	Mike Good (t) (6/19) Brett Waters (6/21)
		Planning Ops	Tim Oliverius (6/20)
		<b>a.</b>	
<b>2. Date Prepared 6/16/11</b>	<b>3. Time 1700</b>	Branch Director	
<b>4. Operational Period Friday, 6/17/11 0700-1900</b>		Division/Group	<b>A,B,F</b> Kim Arrington (6/18)
<b>5. Command and General Staff</b>		Division/Group	<b>E</b> Kim Arrington (6/18)
Incident Commander	Mike Hendricks (6/22) George Custer	Division/Group	<b>K,L</b> Scott Ellis (6/19)
Deputy		Division/Group	<b>O</b> Scott Ellis (6/19)
Safety Officers	Dwight Bryant (6/19), Tater Maines (6/19), Charles Stanton (6/18) Hunter Birckhead (6/19) Gene Madden	Division/Group	<b>C,M,N</b> Jay Strider (6/19)
Liaison Officer	Larry Such (6/17)	Division/Group	<b>Water Handling</b> Rodney Black (6/21)
Information Officer	David Brown (6/19) Brian Haines (6/19)	Division/Group	<b>Initial Attack</b> Dwight Newman (6/16)
		ICT4	<b>Night Shift</b> Fred Harris (6/30)
		<b>b.</b>	
<b>6a. Agency Administrators</b>		Branch Director	
US FWS	Mike Bryant, Scott Lanier, Matt Connolly	Division/Group	
NC DFR	David Lane	Division/Group	
<b>6b. Agency Representatives</b>		Division/Group	
US FWS	Paul Pallas	<b>c.</b>	
NC DFR D-13	Ed Christopher	Division/Group	
US FWS	Bonnie Strawser	Division/Group	
US FWS Rehab	Kelley Van Drueten		
Dare EM	Sandy Sanderson	Division/Group	
Stumpy Pt. FD	Curtis Price	<b>d.</b>	
US Navy	Lt. Cmdr. Marty Hill	Branch Director	
Interim Range Mgr	Don Heaton	Division/Group	
US Air Force	Joe Lafferty	Division/Group	
<b>7. Planning Section</b>		Division/Group	
Chief	Kevin Harvell (6/19) Darrell Schwilling	Division/Group	
Chief	Larry Such (6/19)	Division/Group	
Resources Unit	K. Palmer (6/19) John Roberts (6/29)	<b>e. Other Groups</b>	
Status Check-In	Jonathan McCall (t) (6/19)		
Situation Unit	Michael Cheek (6/19)		
GISS	Roger Hart (6/19) Andrew Bailey (6/19) Audrey Gustafson (6/16)		
Field Observers	Caleb Jones (6/19) Joshua Williams (6/28) Trent Duncan (6/19)	<b>f. Air Operations Branch</b>	
Fire Behavior	David Greathouse (6/19)	Air Ops Branch Directors	Mike Maguire (6/25)
Smoke Analyst	Gary Curcio (6/27) Eric Welker (6/28)	Air Tactical Grp Supervisor	Rob Bickerstaff (6/23)
Demobilization Unit	Michael Chesnutt (6/19)	Air Tactical Grp Supervisor	Donnie Harris (7/3)
Documentation Unit	Rob Roberson (6/19)	Air Support Grp Supervisor	Al Driesbach (6/25)
<b>8. Logistics Section</b>		Helibase Manager	Tom Kennedy (6/24)
Chief	Roger Harris (6/19) Sally Browning	<b>10. Finance Section</b>	
Supply Unit	Patrick Raynor (6/19)	Chief	Annie Lott (6/19) James Meredith
Receiving & Dist	Derek Arney (6/28)	Purchasing Agent	Christopher Frank (6/17)
Ground Support Unit	Max Suttles (6/19)	Procurement Unit	Sheila Head (6/19)
Facilities Unit	Clyde Leggins (6/19)	Time Unit	Gina Rose (6/19)
Food Unit	Alton Perry (6/19)	Cost Unit	Beth Plummer (6/19)
Ordering Manager	Tim Flemming (6/19)	Equip/Pers Time Recorder	Susan Baker / Carolyn Cross
Communications Unit	Dick Ruble (6/19)	Incident Business Advisors	Helen Czernik (7/5) Mark Morris (7/15)
Communications Tech	Jim Smith (6/19)	Computer Specialist	Tom James (6/19)
Radio Operator	Hugh Hassell (6/19)	<b>Prepared by:</b>	
Equipment Managers	Honeycutt (6/19) Rogers (t) (6/19) Evans (6/26)	Kelli Palmer	
Medical Unit	Randy Kearney (6/19)		
Security Mngr	George Hedges (6/21)		

## FIRE BEHAVIOR FORECAST

<b>FORECAST NUMBER:</b> 38	<b>TYPE OF FIRE:</b> Wildfire
<b>FIRE NAME:</b> Pains Bay	<b>OPERATIONAL PERIOD:</b> 6/17/11 Days
<b>DATE ISSUED:</b> 6/16/11	<b>TIME ISSUED:</b> 1800
<b>UNIT:</b> NCDNR	<b>SIGNED:</b> /s/ David Greathouse

### INPUTS

**WEATHER SUMMARY:**

**Weather remains unsettled with still a chance of Thunderstorms...**

**Today:** Partly Sunny, 20% chance of Thunderstorms

Max Temp – 89, Min RH – 51%, Winds – S 7-11mph

Mixing height – 5800'-7200', Transport Winds – SW 12-16mph, Haines 4

**Tonight:** Partly cloudy, 20% chance of Thunderstorms

Min Temp – 72, Max RH – 100%, Winds S-SW 8 Gusting to 21

**Winds could become gusty and erratic near Thunderstorms.**

### OUTPUTS

**FIRE BEHAVIOR****GENERAL:**

This fire is burning mainly in Pocosin shrub fuels with a Pond Pine overstory. Severe drought conditions along with this volatile fuel type can produce rapid rates of spread and high flame lengths, even when relative humidity's are high and winds speeds are low. Organic soils in this area contribute to the fire intensity and will continue for long periods of time under the current conditions

Yesterday active fire behavior such as flare ups in unburned islands, re-burning and continued smoldering in the organic soil was seen in the interior of the fire perimeter.

**SPECIFIC:**

**All Divisions:** Expect active burning in remaining green fuel and re-burn in browned and cured fuel, as well as continued active fire and smoldering in organic soils. Any torching near the fire line could loft embers across the fire line causing spot fires. Spotting can be up to .1 miles and the probability of ignition is 30%

Any fire that get established can see rates of spread of 18-29c/hr and flame lengths of 11'-14'

#### NFDRS Indices (Fuel Model G)

	ERC-G	Burning Index
Yesterday	39	54
Today	36	36

**\*\*The current KBDI is 603\*\***

**AIR OPERATIONS:**

MVFR conditions can develop over the fire area due to smoke  
Slight risk of hail, associated with forecasted Thunderstorms.

### SAFETY

Our greatest chance of obtaining the desired state of safety is the application of our most powerful tool – the brain of the wildland Firefighter individually and collectively!

Local thresholds that shout watch out; Temp above 90 degrees, RH's below 25%, Winds greater than 7mph

# Safety Message

6/17/2011

**Tailgate Safety Briefings are required before starting work on your Division or fire assignment!**

**Hazards:**

<i>Complacency</i>	<i>Air Operations</i>	<i>Snags</i>	<i>Transition</i>
<i>Driving</i>	<i>Hydration</i>	<i>Wildlife</i>	<i>Thunderstorms</i>
<i>Fire Behavior</i>	<i>Heavy Equipment</i>		

**DRIVING** – With roads getting wet be heads up for slick conditions. Watch for personnel standing behind and beside their vehicle slow down and use four wheel drive to keep from spinning and damaging the road.

**HYDRATION/HEAT STRESS** - Temperatures are on the rise. The body shuts down the thirst mechanism when you're dehydrated, therefore, be sure to drink a lot, before you get thirsty. 4:1 water to Powerade or Gatorade.

**FIRE BEHAVIOR** – Maintain situational awareness, follow 10 Standard Orders, recognize / mitigate the 18 Watch Out Situations, and apply LCES. Know the fire weather forecast. Monitor conditions. **Pumps** - Operators and Mechanics should be the only personnel near pumps. PTOs and exposed drive belts can injure you. Canal banks can collapse. Noise levels can be high. Shut down pumps to service.

**SNAGS** – Stay out of area, essential fire line personnel only. Look at root system before working/ parking. Refer to IRPG Pg 20-21 with conditions getting wet around trees with exposed roots they are beginning to fall access your current mission and stay clear of potential dangerous trees.

**Complacency-** Don't let your guard down or get complacent, stay alert and maintain your situational awareness.

**Heavy Equipment-** Use sit awareness around volume pumps. Secure loose clothing PTO's and drive belts can injure you. Also use the 3 points of contact in mounting and dismounting equipment.

**Thunderstorms-** Observe the 30/30 rule. If you see lightning and hear thunder follow in less than 30 secs, take storm precautions indentified on page 19 of the IRPG.

**Transition-** New crews and team members will be coming to the incident over the next few days. Give and receive clear instructions remember situational awareness is key at this time.

Safety Officers Dwight Bryant, Tater Maines, Charles Stanton

---

**Safety Officers Dwight Bryant, Tater Maines, Charles Stanton**

# Pains Bay Fire Information Section

Friday June 17, 2011

If you see unescorted media on the fire, please refer them to a Public Information Officer, so an escort can be provided. **PIO contact information:**

- **David Brown**      Cell – (828) 273-0982 Radio – Information Brown
- **Brian Haines**      Cell – (919) 218-9728 Radio – Information Haines

Please review the talking points below and share this information with the public, if you are asked questions. Refer reporters to one of the Public Information Officers.

**The Pains Bay Fire** has burned more than 45,000 acres on Alligator River National Wildlife Refuge and the Department of Defense, Dare County Range.

**The containment goal** of the USFWS, DoD, and NCDNR is to keep the Pains Bay Fire contained until there is sufficient rain to put it out.

**Ground Fire & Smoke** - Over 8,000 acres of organic soil (peat) continues to smolder, generating enough smoke to impact air quality and visibility on Roanoke Island, the Outer Banks and in Stumpy Point, Manns Harbor, and surrounding communities. The intensity of the smoke depends on the weather, primarily the wind speed and direction. The ground fire (burning peat) will continue until all the peat is consumed or the soil moisture rises to a point that combustion cannot be sustained. Considering the current drought condition, it is estimated that it will take a six-inch rain event to completely extinguish the burning peat.

**Containment tactics** - In the absence of significant rainfall, firefighters are using water in a variety of methods to extinguish ground fire along containment lines on the perimeter of the fire.

- High volume pumps are used to move water through a system of canals to extinguish the burning peat by flooding blocks of land. It takes 163,000 gallons of water to cover one acre of land with six inches of water.
- Rainbird sprinklers are used to raise the soil moisture on hot spots along the fire perimeter.
- An irrigation system is used to keep containment lines wet where there are no roads or canals. The irrigation pumps run 24 hours per day.
- Wildland engines are used to mop up remaining hot spots along roads.

Even with all these suppression techniques, it is not possible to extinguish all pockets of burning peat within the 45,000-acre Pains Bay Fire area. The limiting factors are accessibility, elevation and pumping capacity. In much of the fire area, there are no canals to move water for flooding, there are no roads for access to set up sprinklers or use wildland engines. Much of the inaccessible ground fire is higher in elevation than the surrounding ground, making it impossible to use the flooding technique. Even if the entire 45,000 acres could be flooded, it would take years to pump the volume of water needed.

#####

<b>DIVISION ASSIGNMENT LIST</b>		1. Branch		2. Division/Group <b>Division A, B, F</b>			
3. Incident Name <b>PAINS BAY FIRE</b>		4. Operational Period Date: 6/17/2011                      Time: 0700-1900hrs					
5. Operations Personnel							
Operations Section Chiefs	Mike Good (†) (6/19) Brett Waters (6/21)		Division/Group Supervisor	Kim Arrington (6/18)			
Branch Director			Safety	Dwight Bryant (6/19), Tater Maines (†) (6/19), Charles Stanton (6/18) Hunter Birckhead (6/19)			
6. Resources Assigned this Period							
Strike Team/Task Force/ Resource Designator	Leader	Request #	Number Persons	Last Work Day	Drop Off Time	Pick Up Time	
<b>Structure Protection</b>							
ICT4 / LIASON	R. Shackelford		1		0700hrs	1900hrs	
LOFR/ Deputy Fire Chief	Curtis Price		1		0700hrs	1900hrs	
Dare County Fire Marshall	Doug Remaley						
ENG Stumpy Point VFD	Available		4		0700hrs	1900hrs	
ENG Manns Harbor VFD	Available		5		0700hrs	1900hrs	
ENG Roanoke Island VFD	Available		4		0700hrs	1900hrs	
Dare County VFD Resources	Available				0700hrs	1900hrs	
EMS Stumpy Point			2		0700hrs	1900hrs	
FWS Boat		E-235					
7. Control Operations							
<ul style="list-style-type: none"> <li>Be available to execute Stumpy Point Evacuation/PrePlan if identified trigger points are met.</li> <li>Prepare PreFire Plan for Mann Harbour Community.</li> </ul>							
8. Special Instructions							
<ul style="list-style-type: none"> <li><b>In the event of an evacuation, contact will be made between Field Ops and ICT4 Shackelford on IC 10.</b></li> <li><b>All supervisors ensure that personnel maintain safe distances during all air operations.</b></li> <li><b>Pay special attention to road crews repairing guard rails on Hwy 264; there are smoke and visibility concerns.</b></li> <li><b>Mann's Harbor and Roanoke Island VFDs are call-when-needed.</b></li> <li><b>Limit use of foam within 300 ft of any water source.</b></li> </ul>							
9. Division/Group Communication Summary							
Function	Frequency	System	Channel	Function	Frequency	System	Channel
Command North South		KING NIFC	<b>Command 10 North 11 South 12</b>	Initial Attack		KING NIFC	<b>5</b>
Tactical Div/Group		KING NIFC	<b>4</b>	Air to Ground		KING NIFC	<b>8</b>
Prepared by (Resource Unit Leader) Kelli Palmer		Approved by (Planning Section Chief) Larry Such		Date 6/16/2011		Time 2030 hrs	



DIVISION ASSIGNMENT LIST			1. Branch		2. Division/Group		
3. Incident Name <b>PAINS BAY FIRE</b>			4. Operational Period Date: 6/17/2011 Time: 0700-1900hrs				
5. Operations Personnel							
Operations Section Chiefs	Mike Good (t) (6/19) Brett Waters (6/21)		Division/Group Supervisor	Kim Arrington (6/18)			
Branch Director			Safety	Dwight Bryant (6/19), Tater Maines (t) (6/19), Charles Stanton (6/18) Hunter Birkhead (6/19)			
6. Resources Assigned this Period							
Strike Team/Task Force/ Resource Designator	Leader		Request #	Number Persons	Last Work Day	Drop Off Time	Pick Up Time
<b>ENG6 Strike Team NCS#11</b>			E-628	12	6/22	0700hrs	1900hrs
STEN 11-41	G. Brown						
STEN (t)	J. Pressley						
ENG6 Engine 11-31	B. Singleton / T. Norman						
ENG6 Engine 11-81	J. Warren / D. VanDenabeele						
ENG6 Engine 5-21	J. Webb / G. Evans						
ENG6 Engine 5-20	L. Bass / K. Bunting						
ENG6 Engine 10-41	S. Gibson / N. Blackwood						
WAT3 NCS 13E1			E-385			0700hrs	1900hrs
7. Control Operations							
<ul style="list-style-type: none"> <li>• Patrol for hotspots and mop-up 100 feet inside control lines.</li> <li>• Stay off interior Range Roads. Use only Perimeter Road to the East of the Range.</li> <li>• Identify and mark hazard trees.</li> </ul>							
8. Special Instructions							
<ul style="list-style-type: none"> <li>• <b>All personnel traveling in DIV E through Air Force Range shall check in with DIVS or Tower.</b></li> <li>• <b>All supervisors ensure that personnel maintain safe distances during all air operations.</b></li> <li>• <b>Pay special attention to road crews repairing guard rails on Hwy. 264; there are smoke and visibility concerns.</b></li> <li>• <b>Mann's Harbor and Roanoke Island VFDs are call-when-needed.</b></li> <li>• <b>Limit use of foam within 300 ft of any water source.</b></li> <li>• <b>Div Sup to check in with Center Air Force Tower at start of shift.</b></li> </ul>							
9. Division/Group Communication Summary							
Function	Frequency	System	Channel	Function	Frequency	System	Channel
Command North South		KING NIFC	<b>Command 10 North 11 South 12</b>	Initial Attack		KING NIFC	<b>5</b>
Tactical Div/Group		KING NIFC	<b>4</b>	Air to Ground		KING NIFC	<b>8</b>
Prepared by (Resource Unit Leader) Kelli Palmer		Approved by (Planning Section Chief) Larry Such			Date 6/16/2011		Time 2030 hrs

DIVISION ASSIGNMENT LIST			1. Branch		2. Division/Group <b>Division C, M, N (Page 1 of 3)</b>			
3. Incident Name <b>PAINS BAY FIRE</b>			4. Operational Period Date: 6/17/2011 Time: 0700-1900hrs					
5. Operations Personnel								
Operations Section Chiefs		Mike Good (t) (6/19) Brett Waters (6/21)		Division/Group Supervisor		Jay Strider (6/19)		
Branch Director				Safety		Dwight Bryant (6/19), Tater Maines (t) (6/19), Charles Stanton (6/18) Hunter Birckhead (6/21)		
6. Resources Assigned this Period								
Strike Team/Task Force/ Resource Designator		Leader		Request #	Number Persons	Last Work Day	Drop Off Time	Pick Up Time
<b>ENG6 Strike Team Interagency #1</b>							0700hrs	1900hrs
STEN		Lee Colson		O-384	1	6/25		
ENG6 SC-FMF		Hammond, Abbott, Danaher		E-13	3	6/20		
Eng6 VAVAF Eng 31		Wright, Henning, Showalter, Whitmore		E-536	4	6/19		
ENG6 VASHP Engine 41		Rudacille, Hall, McCoy		E-9	3	6/18		
Marshmaster DBR		C. Abbott		E-222				
Mop-up Truck NCS D-8				E-359	0			
Mop up trailer D-13 #2				E-240			0700hrs	1900hrs
(5) 6" Pumps				E-5151 E-5192 E-338	E-5191 E-5352			
(3) 2.5 " Pumps					0			
6" pump and Rainbird								
7. Control Operations <ul style="list-style-type: none"> <li>Patrol hot spots. Mop up 100' inside control lines</li> <li>Identify and mark hazard trees.</li> </ul>								
8. Special Instructions <ul style="list-style-type: none"> <li><b>All supervisors ensure that personnel maintain safe distances during all air operations.</b></li> <li><b>Limit use of foam within 300 ft of any water source.</b></li> <li><b>Identify escape routes and safety zones.</b></li> <li><b>Ensure Finance is advised at end of shift with hours worked on USFWS land. Assess potential for snag hazards. Flag off snags and mitigate where possible.</b></li> </ul>								
9. Division/Group Communication Summary								
Function	Frequency	System	Channel	Function	Frequency	System	Channel	
Command North South		KING NIFC	<b>Command 10 North 11 South 12</b>	Initial Attack		KING NIFC	<b>5</b>	
Tactical Div/Group		KING NIFC	<b>2</b>	Air to Ground		KING NIFC	<b>8</b>	
Prepared by (Resource Unit Leader) Kelli Palmer		Approved by (Planning Section Chief) Larry Such		Date 6/16/2011			Time 2030 hrs	

DIVISION ASSIGNMENT LIST		1. Branch		2. Division/Group <b>Division C, M, N</b> <b>(Page 2 of 3)</b>			
3. Incident Name <b>PAINS BAY FIRE</b>		4. Operational Period Date: 6/17/2011 Time: 0700-1900hrs					
5. Operations Personnel							
Operations Section Chiefs	Mike Good (t) (6/19) Brett Waters (6/21)		Division/Group Supervisors	Jay Strider (6/19)			
Branch Director			Safety	Dwight Bryant (6/19), Tater Maines (t) (6/19), Charles Stanton (6/18) Hunter Birckhead (6/19)			
6. Resources Assigned this Period							
Strike Team/Task Force/ Resource Designator	Leader		Request #	Number Persons	Last Work Day	Drop Off Time	Pick Up Time
<b>Task Force #1</b>				6		0700 hrs	1900 hrs
TFLD	Keith Money		O-383	1	6/22		
T6 ENG VAVAF Engine 11	J. Bier, T. Fultz, T. Williamson		E-6	3	6/21		
WAT3 NCS 13E1	J. Bumgarner		E-385, O-399	1	6/29		
WAT S2 Bush Fire KY-KIC	S. McKinney		E-648	1	7/11	0700hrs	1900hrs
MotorGrader DBR	B. Collier		O-421	1	6/30	0700hrs	1900hrs
7. Control Operations							
<ul style="list-style-type: none"> <li>Patrol hot spots. Mop up 100' inside control lines</li> <li>Identify and mark hazard trees.</li> </ul>							
8. Special Instructions							
<ul style="list-style-type: none"> <li><b>All supervisors ensure that personnel maintain safe distances during all air operations.</b></li> <li><b>Limit use of foam within 300 ft of any water source.</b></li> <li><b>Identify escape routes and safety zones.</b></li> <li><b>Ensure Finance is advised at end of shift with hours worked on USFWS land.</b></li> <li><b>Assess potential for snag hazards. Flag off snags and mitigate where possible.</b></li> </ul>							
9. Division/Group Communication Summary							
Function	Frequency	System	Channel	Function	Frequency	System	Channel
Command North South		KING NIFC	<b>Command 10 North 11 South 12</b>	Initial Attack		KING NIFC	<b>5</b>
Tactical Div/Group		KING NIFC	<b>2</b>	Air to Ground		KING NIFC	<b>8</b>
Prepared by (Resource Unit Leader) Kelli Palmer		Approved by (Planning Section Chief) Larry Such		Date 6/16/2011		Time 2030 hrs	

<b>DIVISION ASSIGNMENT LIST</b>		1. Branch		2. Division/Group <b>Division C,M,N (Page 3 of 3)</b>			
3. Incident Name <b>PAINS BAY FIRE</b>		4. Operational Period Date: 6/17/2011                      Time: 0700-1900hrs					
5. Operations Personnel							
Operations Section Chiefs	Mike Good (t) (6/19) Brett Waters (6/21)	Division/Group Supervisors	Jay Strider (6/19)				
Branch Director		Safety	Dwight Bryant (6/19), Tater Maines (t) (6/19), Charles Stanton (6/18) Hunter Birkhead (6/19)				
6. Resources Assigned this Period							
Strike Team/Task Force/ Resource Designator	Leader	Request #	Number Persons	Last Work Day	Drop Off Time	Pick Up Time	
<b>ENG 6 Strike Team MN</b>							
STEN	Buren Fulmer	O-390	1	6/22	0700hrs	1900hrs	
T6 ENG (MN-MFC) BACKUS ENG-714	E. Stoddard, K. Gentry, P. Lundgren	E-632	3	6/25	0700hrs	1900hrs	
T6 ENG (MN-MFC) 409002	F. Spears, D. Perkins, R. Beaulieu	E-633	3	6/25	0700hrs	1900hrs	
7. Control Operations <ul style="list-style-type: none"> <li>Patrol hot spots. Mop up 100' inside control lines</li> <li>Identify and mark hazard trees.</li> </ul>							
8. Special Instructions <ul style="list-style-type: none"> <li><b>All supervisors ensure that personnel maintain safe distances during all air operations.</b></li> <li><b>Limit use of foam within 300 ft of any water source.</b></li> <li><b>Identify escape routes and safety zones.</b></li> <li><b>Ensure Finance is advised at end of shift with hours worked on USFWS land.</b></li> <li><b>Assess potential for snag hazards. Flag off snags and mitigate where possible.</b></li> </ul>							
9. Division/Group Communication Summary							
Function	Frequency	System	Channel	Function	Frequency	System	Channel
Command North South		KING NIFC	<b>Command 10 North 11 South 12</b>	Initial Attack		KING NIFC	<b>5</b>
Tactical Div/Group		KING NIFC	<b>2</b>	Air to Ground		KING NIFC	<b>8</b>
Prepared by (Resource Unit Leader) Kelli Palmer		Approved by (Planning Section Chief) Larry Such		Date 6/16/2011		Time 2030 hrs	

<b>DIVISION ASSIGNMENT LIST</b>		1. Branch		2. Division/Group <b>Division K,L</b>			
3. Incident Name <b>PAINS BAY FIRE</b>		4. Operational Period Date: 6/17/2011                      Time: 0700-1900hrs					
5. Operations Personnel							
Operations Section Chiefs	Mike Good (t) (6/19) Brett Waters (6/21)	Division/Group Supervisor	Scott Ellis (6/19)				
Branch Director		Safety	Dwight Bryant (6/19), Tater Maines (t) (6/19), Charles Stanton (6/18) Hunter Birkhead (6/19)				
6. Resources Assigned this Period							
Strike Team/Task Force/ Resource Designator	Leader	Request #	Number Persons	Last Work Day	Drop Off Time	Pick Up Time	
T5 ENG 699 Texas Fire (TX-TIC)	J. Judd, S. Torske, T. Whitewood	E-623	3	6/26	0700hrs	1900hrs	
D7 WAT3 7E1		E-309	1		0700hrs	1900hrs	
7. Control Operations							
<ul style="list-style-type: none"> <li>Patrol hot spots. Mop up 100' inside control lines</li> <li>Identify and mark hazard trees.</li> </ul>							
8. Special Instructions							
<ul style="list-style-type: none"> <li><b>All supervisors ensure that personnel maintain safe distances during all air operations.</b></li> <li><b>Limit use of foam within 300 ft of any water source.</b></li> </ul>							
9. Division/Group Communication Summary							
Function	Frequency	System	Channel	Function	Frequency	System	Channel
Command North South		KING NIFC	<b>Command 10 North 11 South 12</b>	Initial Attack		KING NIFC	<b>5</b>
Tactical Div/Group		KING NIFC	<b>6</b>	Air to Ground		KING NIFC	<b>8</b>
Prepared by (Resource Unit Leader) Kelli Palmer		Approved by (Planning Section Chief) Larry Such		Date 6/16/2011		Time 2030 hrs	

<b>DIVISION ASSIGNMENT LIST</b>		1. Branch		2. Division/Group <b>Division O (Pg 1of 2)</b>			
3. Incident Name <b>PAINS BAY FIRE</b>		4. Operational Period Date: 6/17/2011 Time: 0700-1900hrs					
5. Operations Personnel							
Operations Section Chiefs	Mike Good (t) (6/19) Brett Waters (6/21)	Division/Group Supervisor	Scott Ellis (6/19)				
Branch Director		Safety	Dwight Bryant (6/19), Tater Maines (t) (6/19), Charles Stanton (6/18) Hunter Birkhead (6/19)				
6. Resources Assigned this Period							
Strike Team/Task Force/ Resource Designator	Leader	Request #	Number Persons	Last Work Day	Drop Off Time	Pick Up Time	
<b>ENG6 Strike Team NCS#12</b>		E-627	11	6/23	0700hrs	1900hrs	
STEN 5-95	Oscar Creech	E-627.1					
ENG6 Engine 3-70	T. McFayden / R. Stevenson	E-627.2					
ENG6 Engine 3-91	J. Callicutt / N. Gatlin	E-627.3					
ENG6 Engine 3-40	J.Buchanan / W. Blalock	E-627.4					
ENG6 Engine 3-21	G. McLendon / C. Sharpton	E-627.5					
ENG6 Engine 1-90	K. McJunkin / K. Robinson	E-627.6					
<b>ENG 6 Strike Team NCS#10</b>		E-624	11	6/23	0700hrs	1900hrs	
STEN 12-41	Brian Rogers	E-624.1					
ENG6 Engine 9/56	B. Keener / B. Banks	E-624.2					
ENG6 Engine 2/46	J. Shoupe / E. Snipes	E-624.3					
ENG6 Engine 12-66	H. Kunzig / R. Shepherd	E-624.4					
ENG6 Engine 12-46	R. Gore / M. Barker	E-624.5					
ENG6 Engine 12-60	J. Reese / R. Ray	E-624.6					
7. Control Operations							
<ul style="list-style-type: none"> <li>Patrol hot spots. Mop up 100' inside control lines</li> <li>Identify and mark hazard trees.</li> </ul>							
8. Special Instructions							
<ul style="list-style-type: none"> <li><b>All supervisors ensure that personnel maintain safe distances during all air operations.</b></li> <li><b>Limit use of foam within 300 ft of any water source.</b></li> </ul>							
9. Division/Group Communication Summary							
Function	Frequency	System	Channel	Function	Frequency	System	Channel
Command North South		KING NIFC	<b>Command 10 North 11 South 12</b>	Initial Attack		KING NIFC	<b>5</b>
Tactical Div/Group		KING NIFC	<b>6</b>	Air to Ground		KING NIFC	<b>8</b>
Prepared by (Resource Unit Leader) Kelli Palmer		Approved by (Planning Section Chief) Larry Such		Date 6/16/2011		Time 2030 hrs	

<b>DIVISION ASSIGNMENT LIST</b>			1. Branch		2. Division/Group <b>Division O (Pg 2 of 2)</b>			
3. Incident Name <b>PAINS BAY FIRE</b>			4. Operational Period Date: 6/17/2011 Time: 0700-1900hrs					
5. Operations Personnel								
Operations Section Chiefs		Mike Good (t) (6/19) Brett Waters (6/21)		Division/Group Supervisor		Scott Ellis (6/19)		
Branch Director				Safety		Dwight Bryant (6/19), Tater Maines (t) (6/19), Charles Stanton (6/18) Hunter Birkhead (6/21)		
6. Resources Assigned this Period								
Strike Team/Task Force/ Resource Designator		Leader		Request #	Number Persons	Last Work Day	Drop Off Time	Pick Up Time
<b>Flex Trac Strike Team #2</b>								
Strike Team Leader		D. Foco		O-280	1	6/18	0700hrs	1900hrs
Flex Trac DBR 13x65 (GoTrac)		T. Harrell		E-320	1		0700hrs	1900hrs
Flex Trac DBR 13x67		Spruill / Mann			2		0700hrs	1900hrs
WAT3 NCS 4E1		B. Lister		E-310, O-398	1	6/29	0700hrs	1900hrs
THSP		M. Gibbs		O-41	1	local	0700hrs	1900hrs
7. Control Operations								
<ul style="list-style-type: none"> <li>Patrol hot spots. Mop up 100' inside control lines</li> <li>Identify and mark hazard trees.</li> </ul>								
8. Special Instructions								
<ul style="list-style-type: none"> <li><b>All supervisors ensure that personnel maintain safe distances during all air operations.</b></li> <li><b>Limit use of foam within 300 ft of any water source.</b></li> </ul>								
9. Division/Group Communication Summary								
Function	Frequency	System	Channel	Function	Frequency	System	Channel	
Command North South		KING NIFC	<b>Command 10 North 11 South 12</b>	Initial Attack		KING NIFC	<b>5</b>	
Tactical Div/Group		KING NIFC	<b>6</b>	Air to Ground		KING NIFC	<b>8</b>	
Prepared by (Resource Unit Leader) Kelli Palmer		Approved by (Planning Section Chief) Larry Such			Date 6/16/2011		Time 2030 hrs	

		1. Branch	2. Division/Group <b>Water Handling (Page 1 of 2)</b>				
3. Incident Name <b>PAINS BAY FIRE</b>		4. Operational Period Date: 6/17/2011 Time: 0700-1900hrs					
5. Operations Personnel							
Operations Section Chiefs	Mike Good (t) (6/19) Brett Waters (6/21)	Division/Group Supervisor	Rodney Black (6/21)				
Branch Director		Safety	Dwight Bryant (6/19), Tater Maines (t) (6/19), Charles Stanton (6/18) Hunter Birckhead (6/19)				
6. Resources Assigned this Period							
Strike Team/Task Force/ Resource Designator	Leader	Request #	Number Persons	Last Work Day	Drop Off Time	Pick Up Time	
<b>TF #1 TFLD</b>	Jason Haywood (6/25) Todd Tollefsrud (6/28)	O-391, O-417	1		0700hrs	1900hrs	
Long Reach Excavator PVT	Clayton	E-645			0700hrs	1900hrs	
Excavator DBR PA00736	D. Strickland	E-204, O-401	1	6/30	0700hrs	1900hrs	
Dump Truck DBR	R. Pace	E-253	1		0700hrs	1900hrs	
Dump Truck DBR	C. Gardner	O-402	1	6/30	0700hrs	1900hrs	
Front End Loader DBR	J. Queen	O-311	1	6/17	0700hrs	1900hrs	
Equipment Operator	B. Grubbs	O-155	1	local	0700hrs	1900hrs	
DOZ2 NCS 9x1	S. McDonald	E-667	1		0700hrs	1900hrs	
7. Control Operations							
<ul style="list-style-type: none"> <li>• Maintain and improve current pumping operations.</li> <li>• Implement flooding operation East of Faircloth Road.</li> <li>• Evaluate flooding opportunities East of Stomper Road.</li> </ul>							
8. Special Instructions							
<ul style="list-style-type: none"> <li>• <b>Ensure pump logs are turned in daily to Finance.</b></li> <li>• <b>All supervisors ensure that personnel maintain safe distances during all air operations.</b></li> <li>• <b>Winching: Analyze each situation before you act. Pay attention to hand location, maintain a safe distance from cables under tension, and maintain communications between operator and crewman.</b></li> <li>• <b>Excavator Work: It's your responsibility to stay clear. The excavator can swing 360 degrees in about one second. Before approaching, make eye contact with operator and allow him to idle down and come to a complete stop.</b></li> <li>• <b>Dump Truck Operations: Dump trucks have reduced visibility. All trucks should use a spotter while backing. At no time should anyone be behind a backing Vehicle!</b></li> </ul>							
9. Division/Group Communication Summary							
Function	Frequency	System	Channel	Function	Frequency	System	Channel
Command North South		KING NIFC	<b>Command 10 North 11 South 12</b>	Initial Attack		KING NIFC	<b>5</b>
Tactical Div/Group		KING NIFC	<b>TAC 1</b>	Air to Ground		KING NIFC	<b>8</b>
Prepared by (Resource Unit Leader) Kelli Palmer		Approved by (Planning Section Chief) Larry Such		Date 6/16/2011		Time 2030 hrs	



<b>DIVISION ASSIGNMENT LIST</b>			1. Branch		2. Division/Group <b>WATER HANDLING (Page 2 of 2)</b>			
3. Incident Name <b>PAINS BAY FIRE</b>			4. Operational Period Date: 6/17/ 2011    Time: 0700 to 1900hrs					
5. Operations Personnel								
Operations Section Chiefs		Mike Good (t) (6/19) Brett Waters (6/21)		Division/Group Supervisor		Rodney Black (6/25)		
Branch Director				Safety		Dwight Bryant (6/19), Tater Maines (t) (6/19), Charles Stanton (6/18) Hunter Bircckhead (6/19)		
6. Resources Assigned this Period								
Strike Team/Task Force/ Resource Designator		Leader		Request #	Number Persons	Last Work Day	Drop Off Time	Pick Up Time
<b>TF #2 TFLD</b>		M. Johnson		O-331	1	6/21	0700hrs	1900hrs
Pump Operator		J. Sommerville		O-379	1	6/21	0700hrs	1900hrs
Pump Operator		M. Carter		O-403	1	6/30	0700hrs	1900hrs
Mechanic		T. Bryant		E-629	1	6/20	0700hrs	1900hrs
Mechanic		J. Rosecrans		E-630	1	6/22	0700hrs	1900hrs
WHSP		Waldo Payne		O-420	1	6/28	0700hrs	1900hrs
(3) 24" Pumps								
(1) 18" Pumps								
(42) 16" Pumps								
7. Control Operations								
<ul style="list-style-type: none"> <li>• Maintain and improve current pumping operations.</li> <li>• Implement flooding operation East of Faircloth Road.</li> <li>• Evaluate flooding opportunities East of Stomper Road.</li> </ul>								
8. Special Instructions								
<ul style="list-style-type: none"> <li>• <b>Ensure pump logs are turned in daily to Finance.</b></li> <li>• <b>All supervisors ensure that personnel maintain safe distances during all air operations.</b></li> <li>• <b>Excavator Work: It's your responsibility to stay clear. The excavator can swing 360° in about one second. Before approaching, make eye contact with operator and allow him to idle down and come to a complete stop.</b></li> <li>• <b>Dump Truck Operations: Dump trucks have reduced visibility; use a spotter while backing. At no time should anyone be behind a backing Vehicle!</b></li> </ul>								
9. Division/Group Communication Summary								
Function	Frequency	System	Channel	Function	Frequency	System	Channel	
Command North South		KING NIFC	<b>Command 10 North 11 South 12</b>	Initial Attack		KING NIFC	<b>5</b>	
Tactical Div/Group		KING NIFC	<b>TAC 1</b>	Air to Ground		KING NIFC	<b>8</b>	
Prepared by (Resource Unit Leader) Kelli Palmer		Approved by (Planning Section Chief) Larry Such			Date 6/16/2011		Time 2030 hrs	

<b>DIVISION ASSIGNMENT LIST</b>		1. Branch		2. Division/Group <b>Initial Attack Group</b>			
3. Incident Name <b>PAINS BAY FIRE</b>			4. Operational Period Date: 6/17/2011 Time: 0700-1900hrs				
5. Operations Personnel							
Operations Section Chiefs		Mike Good (t) (6/19) Brett Waters (6/21)		Division/Group Supervisors			
Branch Director				Safety		Dwight Bryant (6/19), Tater Maines (t) (6/19), Charles Stanton (6/18) Hunter Birkhead (6/19)	
6. Resources Assigned this Period							
Strike Team/Task Force/ Resource Designator		Leader	Request #	Number Persons	Last Work Day	Drop Off Time	Pick Up Time
TFLD/ICT4		T. Van Orman 6/29	O-400	1	6/29	0700hrs	1900hrs
ENG6 #9521 (MO-MOC)		J. Register, C. Dry K. Gaillard,	E-673	3	6/29	0700hrs	1900hrs
ENG6 #21 (IN-HIC)		P. Fountain, G. Scott , R. Lidell	E-674	3	6/29	0700hrs	1900hrs
Flex Trac FWS AX4		B. Govan	O-81	2	local	0700hrs	1900hrs
Flex Trac FWS AX2		J. Swain	E-380, O-82	2	local	0700hrs	1900hrs
Marshmaster w/ mower FWS		E. Meekins/R. Nordsven		2		0700hrs	1900hrs
7. Control Operations <ul style="list-style-type: none"> <li>Support extended attack or new large fires on FWS lands in FWS District 1 (Mackay Island, Currituck, Roanoke River, Pocosin Lakes, Swanquarter, Mattamuskeet, and Cedar Island NWRs).</li> <li>Resources will be dispatched by FWS through IC D. Newman.</li> <li>Equipment staged at Alligator River Work Center.</li> </ul>							
8. Special Instructions <ul style="list-style-type: none"> <li><b>All supervisors ensure that personnel maintain safe distances during all air operations.</b></li> <li><b>Limit use of foam within 100' of any water surface.</b></li> </ul>							
9. Division/Group Communication Summary							
Function	Frequency	System	Channel	Function	Frequency	System	Channel
Command North South		KING NIFC	<b>Command 10 North 11 South 12</b>	Initial Attack		KING NIFC	<b>5</b>
Tactical Div/Group		KING NIFC	<b>5</b>	Air to Ground		KING NIFC	<b>8</b>
Prepared by (Resource Unit Leader) Kelli Palmer		Approved by (Planning Section Chief) Larry Such		Date 6/16/2011			Time 2030 hrs

<b>DIVISION ASSIGNMENT LIST</b>		1. Branch		<b>2. Division/Group</b> <b>Night Shift</b>			
3. Incident Name <b>PAINS BAY FIRE</b>		4. Operational Period Date: 6/16 to 6/17/ 2011 Time: 1900 to 0700hrs					
5. Operations Personnel							
Operations Section Chiefs	Mike Good (t) (6/19) Brett Waters (6/21)	Division/Group Supervisor	Fred Harris (6/30)				
Branch Director		Safety	Dwight Bryant (6/19), Tater Maines (t) (6/19), Charles Stanton (6/18) Hunter Birkhead (6/19)				
6. Resources Assigned this Period							
Strike Team/Task Force/ Resource Designator	Leader	Request #	Number Persons	Last Work Day	Drop Off Time	Pick Up Time	
Pump operator	J. Lowder	O-411	1	6/30	1900	0700	
Pump operator	W. Whalen	O-408	1	6/30	1900	0700	
Pump operator	J. Guidry	O-409	1	6/30	1900	0700	
Pump operator	C. Speary	O-410	1	6/30	1900	0700	
Mechanic	H. Edmonds	E-675.1	1	6/30	1900	0700	
7. Control Operations							
<ul style="list-style-type: none"> <li>Monitor current pumping operations.</li> <li>US 264 has re-opened to public traffic. Be Alert.</li> </ul>							
8. Special Instructions							
<ul style="list-style-type: none"> <li><b>STAY OFF IMPACT AREA FROM 2100 TO 0300. AREA IS HOT</b></li> <li><b>In case of an emergency utilize Dare County VFD radio (800 mhz) to contact County EOC.</b></li> <li><b>Work together.</b></li> <li><b>Provide adequate lighting prior to shutting down of pumps for servicing. Stay away from canal banks.</b></li> <li><b>Watch for rattlesnakes and bears. Do not throw food on ground or in canal.</b></li> <li><b>Keep smoke exposure to a minimum but do not stage on Hwy 264.</b></li> <li><b>Refer to Safety Message and Medical Plan for more detail.</b></li> <li></li> </ul>							
9. Division/Group Communication Summary							
Function	Frequency	System	Channel	Function	Frequency	System	Channel
Command North South		KING NIFC	<b>Command 10 North 11 South 12</b>	Initial Attack		KING NIFC	<b>5</b>
Tactical Div/Group		KING NIFC	<b>3</b>	Air to Ground		KING NIFC	<b>8</b>
Prepared by (Resource Unit Leader) Kelli Palmer		Approved by (Planning Section Chief) Larry Such		Date 6/16/2011		Time 2030 hrs	

INCIDENT RADIO COMMUNICATIONS PLAN			1. Incident Name PAIN BAY FIRE	2. Date Time Prepared 6/16/2011	3. Operational Period Date/Time 6/17/2011		
MODE: W=WIDE, N=NARROW							
System/cache	CH #	Function	Frequency	Tone	Mode	Assignment	Remarks
NCDNR	CH 1	TAC 1	RX: 151.4000	136.5	w	WATER HANDLING GRP.	
			TX: 151.4000	136.5			
NCDNR	CH 2	TAC 2	RX: 151.4600	136.5	W	Divs.C,M,N	
			TX: 151.4600	136.5			
NCDNR	CH 3	TAC 3	RX: 151.3100	136.5	W	NIGHT SHIFT	
			TX: 151.3100	136.5			
NIFC	CH 4	TAC 4	RX: 168.0500	none	N	Divs. A,B,E,F	
			TX: 168.0500	136.5			
NIFC	CH 5	TAC 5	RX: 168.2000	none	N	Initial Attack	
			TX: 168.2000	136.5			
NIFC	CH 6	TAC 6	RX: 168.6000	none	N	Divs. O, K, L	
			TX: 168.6000	151.4			
NCDNR	CH 7	TAC 7	RX: 154.2800	none	w		FOR CONTINGENCY TO TALK TO VFDs IF NEEDED.
			TX: 154.2800	none			
NCDNR	CH 8	NCFs AIR/GROUND	RX: 171.5750	131.8	N	ALL DIVS.	PRIMARY AIR TO GROUND
			TX: 171.5750	131.8			
NIFC	CH 9	TAC 9	RX: 168.3500	none	N	UNASSIGNED	
			TX: 168.3500	136.5			
NCDNR	CH 10	COMMAND 10	RX: 151.3250	136.5	W	OPERATIONS	PRIMARY COMMAND/STUMPY POINT
			TX: 159.3300	118.8			
US FWS	CH 11	COMMAND 11	RX: 172.6750	118.8	N	OPERATIONS	CMD. NORTH/COLUMBIA RPTR.
			TX: 168.5000	118.8			
US FWS	CH 12	COMMAND 12	RX: 164.6250	186.2	N	OPERATIONS	CMD. SOUTH/ENGELHARD RPTR.
			TX: 163.1500	186.2			
US FWS	CH 13	TAC 13	RX: 162.2375	156.7	N	SECURITY	
			TX: 162.2375	156.7			
NIFC	CH 14	COMMAND 14	RX: 167.1000	146.2	N		PORTABLE REPEATER FOR CONTINGENCY USE
			TX: 169.7500	146.2			
US	CH 15	2ND. AIR/GROUND	RX: 169.9250	none	N	All Divs.	SECONDARY AIR TO GROUND
			TX: 169.9250	none			
US	CH 16	AIR GUARD	RX: 168.6250	none	N	AIR GUARD	EMERGENCY CONTACT WITH AIRCRAFT
			TX: 168.6250	110.9			
5. Prepared by (Communications Unit) DICK RUBLE / COML						NOTE: COMMUNICATIONS MONITORS COMMAND 10.	

*Note: This is not a standard NWCG ICS205 Form*

<b>MEDICAL PLAN</b>	1. Incident Name Pains Bay Fire	2. Date Prepared 06/16/11	3. Time Prepared 1800	4. Operational Period Day/Night	
<b>5. Incident Medical Aid Station</b>					
Medical Aid Stations	Location			Paramedics Yes No	
Dare County Parks and Recreation Bldg (0630-2000hrs)	410 Airport Road Manteo, NC			X	
John Meredith, Line EMT 334-799-0214	Staged in Navy Range Area			X	
Steve Foster, Line EMT 979-236-8959	Staged in Air Force Range Area			X	
<b>6. Transportation</b>					
<b>A. Ambulance Services</b>					
Name	Address	Phone	Paramedics Yes No		
Dare County EMS Station #8	6677 Hwy 64 Business, Manns Harbor, NC	Dare Central (911)	X		
Dare County Med Flight	1078 Driftwood Dr., Manteo, NC	911	X		
<b>B. Incident Ambulances</b>					
Name	Location			Paramedics Yes No	
<b>7. Hospitals</b>					
Name	Address	Travel Time Air Ground	Phone	Helipad Yes No	Burn Center Yes No
Outer Banks Hospital	Mile Post 14, 4800 S. Croatan Hwy Nags Head, NC Latitude: N 35° 56' 20.33" Longitude: W 75° 45' 5.89"	15 30	(252) 449-4500	X	X
Sentara Norfolk General Hospital	Norfolk, VA <b>TRAUMA BURN UNIT</b>	30 90	(757) 388-3000	X	X
<b>8. Medical Emergency Procedures</b>					
<p><b>**FOR CRITICAL EMERGENCIES** Step 1.</b> Report all injuries and illnesses to the closest DIVS. DIVS will notify the Line EMT and ICP Communications, and include the extent of the injury and transportation needed. Do not use patient's name on the radio. A medical emergency should be declared over the radio immediately. All radio traffic will be kept to a minimum so emergency procedures can proceed uninhibited. <b>Step 2.</b> ICP Communications will notify Dare Central Dispatch (911) and MEDL. Safety will be notified. Dare County EMS will respond and determine the appropriate treatment, transportation and facility needed. If ground transportation is determined, assign personnel to meet the ambulance at a location that is easily accessible to lead them to the site of the injured. If patient is transported to meet EMS, a personnel needs to remain with patient until EMS has arrived. One Line EMT is staged in the Navy Range area and another in the Air Force Range area to respond to injuries and stabilize patient until EMS personnel arrive. <b>**FOR MINOR EMERGENCIES** Step 1.</b> Patient - Will Advise Their Supervisor <b>Step 2.</b> Patient - Will Receive Care <b>Step 3.</b> Patient Supervisor/Patient - Will Advise Division Supervisor <b>Step 4.</b> Div. Sup/Patient Supervisor- Will Document Incident On 214 <b>Step5.</b> Div. Sup. /Patient's Supervisor - Will Advise The Medical Unit Leader At The End Of Each Shift Of ANY Illness or Injury And Of ANY Medical Care Given. <b>**If transportation is needed it will be arranged by MEDL**</b></p> <p><b>Nighttime Operations:</b> Communicate all emergency medical needs directly to Dare County Emergency Communications via 800mhz radio furnished by NCDFR Dare County Ranger, and contact Safety Officers Dwight Bryant 919-705-3324 or Tater Maines 828-499-0803 and Medical Unit Leader Randy Kearney 919-727-0954.</p> <p><u>ANY INJURY OR ILLNESS IN WHICH ANY TYPE OF CARE IS GIVEN WILL BE DOCUMENTED ON THE UNIT'S 214 AND THE MEDICAL UNIT LEADER WILL EITHER RECEIVE A COPY OF THE 214 OR BE ADVISED VERBALLY BY THE DIVISION SUPERVISOR, PATIENT'S SUPERVISOR OR PATIENT AT THE END OF EACH SHIFT.</u></p>					
Prepared by (Medical Unit Leader) Randy Kearney, MEDL			10. Reviewed by (Safety Officer) Dwight Bryant, SOF2, Tater Maines, SOF2		

<b>AIR OPERATIONS SUMMARY</b>		<b>PREPARED BY:</b> Mike Maguire AOBD(t)		<b>PREPARED DATE/TIME:</b> 6/16/2011 1700	
<b>1. INCIDENT NAME</b> Pains Bay		<b>2. OPERATIONAL PERIOD DATE:</b> 6/17/2011		<b>SHIFT START TIME:</b> 0800	
<b>HELICOPTERS ON THE GROUND AT 20:00</b>		<b>SUNRISE:</b> 0546		<b>SHIFT END TIME:</b> 2000	
<b>3. REMARKS</b> (Safety Notes, Hazards, Air Operations Special Equipment, etc.) <ul style="list-style-type: none"> <li>- Establish positive communications with Divisions and Operations when over fire.</li> <li>- Contact DOD towers when entering MOA (122.9) "Navy Dare" or "Air Force Dare"</li> <li>- ONLY USE APPROVED DIP SITES.</li> <li>- NOTE THAT SOME TOWERS ARE NOT MARKED ON SECTIONAL MAPS. (Can be 2500' Tail)</li> <li>- SQUAWK 1255 and ensure warning lights are on.</li> <li>- "It takes everyone to say yes, only one to say no for all missions." M.M.</li> <li>• <u>Engelhard Airstrip: N35 33.74' X W75 57.31'</u></li> <li>• <u>Edenton Airstrip: N36 01.72 X W76 34.19'</u></li> <li>• <u>Currituck Airstrip: N36 23.94' X W76 0.98'</u></li> </ul>		<b>4. MEDEVAC A/C:</b> Dare County Med Flight		<b>5. TFR:</b> <u>1/8253 A-78 3100' MSL</u> (252-489-7758 TFR 24 hr phone) <b>Military Aircraft could be conducting flight operations above 4000' MSL over the TFR and could be conducting operations to the south of our TFR down to 500' MSL.</b>	
<b>6. PERSONNEL</b>		<b>7. FREQUENCIES</b>		<b>8. FIXED WING # Available/ Type/ Make-Model/FAA # / Bases</b>	
AOBD(t): Mike Maguire O-299	Phone 828-775-1871	AM 123.125	FM	ALLIGATOR RIVER DISPATCH: 252-473-1744 X 21	
ASGS: Al Driesbach O-388	805-479-1837	122.425		Jae Naugle A/C 252-473-1840 / 252-473-1721	
ATGS: Rob Bickerstaffe O-213	828-989-1314			Air Force Tower 252-473-2201	
HLCO/ ATGS: Carl Piper O-293	530-295-7273			Navy Tower 252-473-2720	
HLCO: Bob Perleberg O-302				Kinston Operations	
HLCO(T): Billy Gardunio O-318	530-604-8643			Neil Barrow: 252-520-2402 x227/228	
HEB1: Tom Kennedy O-300	912-308-6036			Jim Slye: 252-520-2402 x227/228	
HEB2(T): Cory Waters O-301 R&R	252-475-0102			ATGS Aircraft Location: MQI	
DECK FREQ				N135BA A-31	
				S.E.A.T.'S- Available Kinston 1000 to 1800	
				T-266 Available Kinston 1000 to 1800	
				Tina Phelps O-336 : 218-244-9882	
				H10 Helicopter 10 NC State IA Kinston 1000 to 1800	

**Pains Bay Contact List**  
**UPDATED 6/16/2011**

Position	Name	Cell #
<b>COMMAND</b>		
ICT2	Mike Hendricks	(919) 548-4190
ICT1 (NIMO)	George Custer	(404) 805-5714
PIO2	David Brown	(828) 273-0982
PIO2(t)	Brian Haines	(919) 218-9728
LOFR	Larry Such	(919) 320-5991
SOF2	Dwight Bryant	(919) 705-3324
SOF2	Charles Stanton	(509) 679-7191
SOF2(t)	Barry "Tater" Maines	(828) 499-0803
SOF1 (NIMO)	Gene Madden	(404) 805-7970
<b>AGENCY ADMINISTRATORS</b>		
NCDFR	David Lane	(919) 218-1760
FWS-Project Leader	Mike Bryant	(252) 216-7505
FWS-Dep. Proj Leader	Scott Lanier	(252) 216-7506
USFWS	Matt Connolly	(252) 799-8111
<b>AGENCY REPRESENTATIVES</b>		
FWS	Paul Pallas	(406) 366-1703
PIO2	Bonnie Strawser	(252) 216-8667
FWS Rehab Coordinator	Kelley Van Druten	(252) 475-0172
FWS	Dennis Stewart	(252) 473-1131x231
NCDFR	Rob Shackelford	(252) 216-5271
US Navy	Lt. Comdr. Marty Hill	(757) 433-1336
US Navy Int. Range Manager	Don Heaton	(386) 717-8799
NCDFR D13	Ed Christopher	(252) 542-0119
<b>COOPERATORS</b>		
Chief, Stumpy Pt FD	RD Price	(252) 216-7146
Dep. Chief Stumpy Pt FD	Curtis Price	(252) 216-7094 cell
		(252) 475-1040 home
Emergency Mgmt Coord	Sandy Sanderson	(252) 473-8326
Dare County Sheriff	Doug Doughtie	(252) 473-3444
USAF	Paul Loughery	(252) 216-8753 cell
		(252) 473-1906 office
Alligator River NWR	Office	(252) 473-1131
Alligator River NWR	Dispatch	(252) 473-1744x21
USFS San Dimas TDC	Robert Manwaring	(626) 225-0123
<b>PLANS</b>		
PSC2	Kevin Harvell	(336) 242-7428
PSC2	Larry Such	(919) 320-5991
PSC1 (NIMO)	Darrell Schwilling	(404) 805-3159
RESL	Kelli Palmer	(828) 292-2950
RESL	John Roberts	(208) 866-1912
SCKN(T)	Jonathan McCall	(828) 507-0970
SITL	Michael Cheek	(828) 231-2691
DOCL	Rob Roberson	(919) 636-0737
DMOB	Michael Chesnutt	(910) 876-1505
IRIN	Audrey Gustafson	(218) 392-0150
FOBS	Caleb Jones	(828) 450-5210
FOBS	Joshua Williams	(405) 406-8719
FOBS	Trent Duncan	(828) 450-2315
GISS	Roger Hart	(910) 308-0003
GISS	Andrew Bailey	(919) 218-7069
FBAN	David Greathouse	(828) 413-2590
Smoke	Gary Curcio	(919) 810-5623
Smoke (t)	Eric Welker	(336) 239-6834

Position	Name	Cell#
<b>OPERATIONS</b>		
OSC2	Brett Waters	(406)581-6198
OSC2	Tim Oliverius	(970) 739-1540
OSC2(t)	Michael Good	(910) 308-0526
Water Handling	Rodney Black	(252) 813-2632
DIVS	Scott Ellis	(828) 674-0541
DIVS	Kim Arrington	(252)-229-1437
DIVS	Jay Strider	(910) 220-6395
DIVS	Cecil Fulmer	(910) 890-0296
ICT4	Dwight Newman	(870) 715-9493
DIVS Night	David Rooks	(910) 540-4979
THSP	Marshall Gibbs	(252) 542-9658
<b>AIR OPERATIONS</b>		
AOBD	Mike Maguire	(828) 775-1871
ATGS	Rob Bickerstaff	(828) 989-1314
ATGS	Al Driesbach	(805) 961-5727
HEB1	Tom Kennedy	(912) 308-6036
<b>FINANCE</b>		
FSC2	Annie Lott	(919) 824-6633
FSC1 (NIMO)	James Meredith	(404) 805-6816
PROC	Shelia Head	(252) 423-1237
TIME	Gina Rose	(252) 325-0329
TIME	Carolyn Cross	(406) 212-7352
COST	Beth Plummer	(704) 616- 0747
PTRC/EQTR	Susan Baker	(252) 542-0654
COMP	Kurt Hinz	(507) 696-3669
IBA	Mark Morris	(509) 332-4549
IBA(t)	Helen Czernik	(252) 475-8339
CTSP	Tom James	(919) 218-9432
PA25	Christopher Frank	(414) 378-8414
<b>LOGISTICS</b>		
LSC1 NIMO	Sally Browning	(404) 805-5063
LSC2	Roger Harris	(910) 640-7859
SPUL	Patrick Raynor	(336) 239-2377
ORDM	Tim Fleming	(828) 231-6217
COML	Dick Ruble	(919) 410-9725
COMT	Jim Smith	(336) 239-1847
RADO	Hugh Hassell	(252) 562-2149
FACL	Clyde Leggins	(828) 443-2294
FDUL	Alton Perry	(919) 218-5511
GSUL	Max Suttles	(828) 273-0685
EQPM	Ricky Honeycutt	(828) 450-2665
MEDL	Randy Kearney	(919) 727-0954
Line EMTB	John Meredith	(334) 799-0214
Line EMTB	Steve Foster	(979) 236-8959
SECM	George Hedges	#1:(205) 269-0728
		#2: (252) 619-4481

**Section E-mail Addresses**

[DFRIMT.Command@ncdenr.gov](mailto:DFRIMT.Command@ncdenr.gov)  
[DFRIMT.Safety@ncdenr.gov](mailto:DFRIMT.Safety@ncdenr.gov)  
[DFRIMT.Info@ncdenr.gov](mailto:DFRIMT.Info@ncdenr.gov)  
[DFRIMT.Ops@ncdenr.gov](mailto:DFRIMT.Ops@ncdenr.gov)  
[DFRIMT.Plans@ncdenr.gov](mailto:DFRIMT.Plans@ncdenr.gov)  
[DFRIMT.Finance@ncdenr.gov](mailto:DFRIMT.Finance@ncdenr.gov)  
[DFRIMT.Logistics@ncdenr.gov](mailto:DFRIMT.Logistics@ncdenr.gov)  
[DFRIMT.Ordering@ncdenr.gov](mailto:DFRIMT.Ordering@ncdenr.gov)

ICP Communications (252) 473-1241  
 ICP Fax (252) 473-1162  
 NWR Dispatch (252) 473-1744x21  
 ICP Finance (252) 473-1237  
 ICP Demob (252) 473-1137

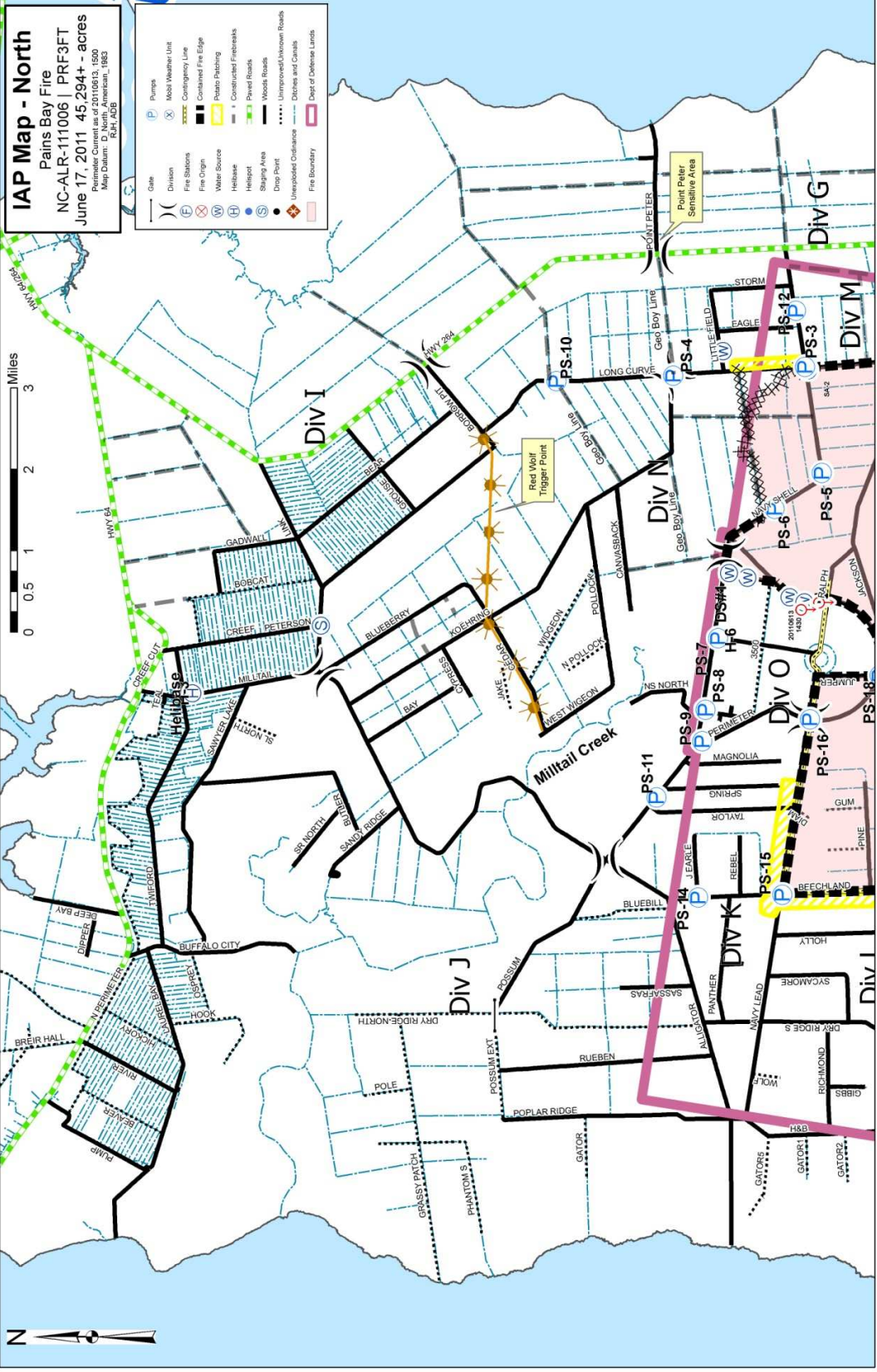


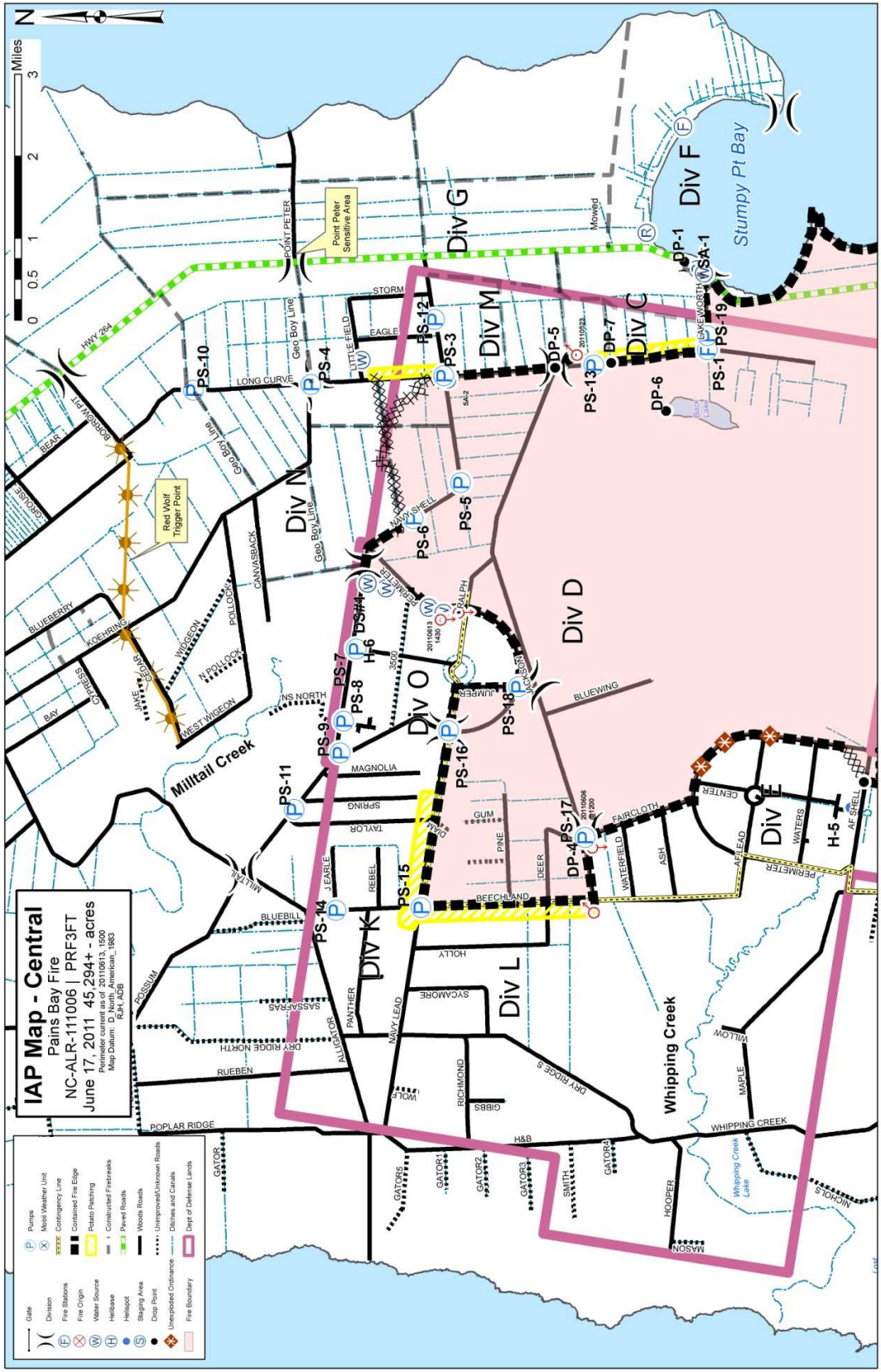
<b>UNIT LOG</b>		1. Incident Name	2. Date Prepared	3. Time Prepared
4. Unit Name/Designators		5. Unit Leader (Name and Position)		6. Operational Period
<b>7. Personnel Roster Assigned</b>				
Name		ICS Position		Home Base
<b>8. Activity Log</b>				
Time	Major Events			
9. Prepared by (Name and Position)				



**IAP Map - North**  
**Pains Bay Fire**  
 NC-ALR-111006 | PRF3FT  
 June 17, 2011 45,294+ - acres  
 Aerial Ortho 2010813, 180  
 Map Datum: D North, Datum: 1885  
 R.H.A.C.B.

	Gate		Pumps
	Mobile Weather Unit		Contingency Line
	Fire Station		Contained Fire Edge
	Fire Origin		Water Source
	Helibase		Constructed Firebreaks
	Helipad		Paved Roads
	Staging Area		Wooded Roads
	Drop Point		Unimproved/Unknown Roads
	Unimproved Containment		Districts and Canals
	Fire Boundary		Dept of Defense Lands





**IAP Map - Central Pains Bay Fire**  
 NC-ALR-111006 | PRF3FT  
 June 17, 2011 45,294+ - acres  
 Parameters current as of 20110613, 1650  
 Map Datum: R.H. ADG  
 Revision: 1863

- |  |                     |  |                          |
|--|---------------------|--|--------------------------|
|  | Pumps               |  | Mish Weather Unit        |
|  | Fire Stations       |  | Concealed Fire Edge      |
|  | Water Source        |  | Plotted Firebreaks       |
|  | Helibase            |  | Paved Roads              |
|  | Helispot            |  | Woods Roads              |
|  | Drop Point          |  | Unimproved/Unknown Roads |
|  | Unexplored Distance |  | Ditches and Canals       |
|  | Fire Boundary       |  | Dept of Defense Lands    |

