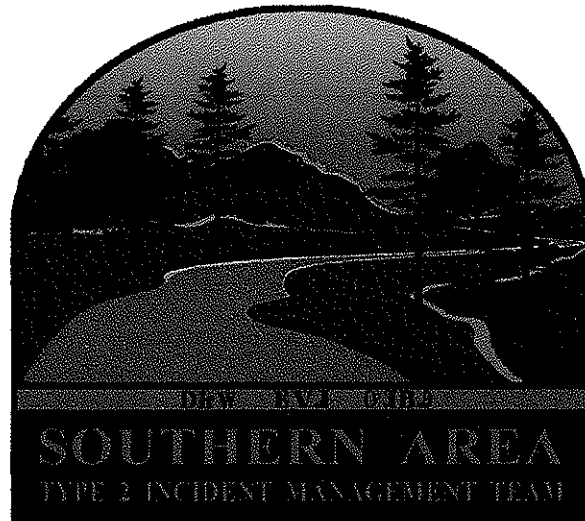


***Table Rock Wildfire***  
**National Forests in North Carolina**

**Incident Action Plan**

**Saturday November 23, 2013**

**Day Shift: 0700-1800**



**P-Code: P8HOQ5 (0811)**  
**Fire Number: NC-NCF-130066**



**IAP**



**MAPS**

|   |   |                              |                          |
|---|---|------------------------------|--------------------------|
| <b>Incident Objectives</b>  | 1. Incident Name<br>TABLE ROCK                        | 2. Date Prepared<br>11/22/13 | 3. Time Prepared<br>1825 |
| 4. Operational Period<br>11/23/13 Saturday Day Shift 0700 - 1800  |   |                              |                          |
| 5. General Control Objectives for the incident (include alternatives) <ul style="list-style-type: none"> <li>1. Provide for the health and safety of firefighting personnel and the public.</li> <li>2. Provide for protection to surrounding communities, such as the Outward Bound Base Camp.</li> <li>3. Minimize the impacts to wilderness values, natural resources and cultural resources during operational activities.</li> <li>4. Manage the incident in the most efficient and cost effective manner commensurate with values at risks.</li> <li>5. Maintain effective communication and working relationships with our cooperators, partners and the media.</li> <li>6. Keep the fire east of the Linville River, South of the Spence Ridge Trail (233), west of FDR 118 and the Wolfpit/Shortoff trailhead, north of the Forest boundary and north of the control line established from previous NC Wildlife Resource Commission (NCWRC) prescribe burn located in the NCWRC property.</li> </ul> |   |                              |                          |
| 6. Weather Forecast for Period<br><br>See attached fire weather forecast.   |   |                              |                          |
| 7. General Safety Message<br><br>See attached safety message.   |   |                              |                          |
| 8. Attachments (mark if attached)   |   |                              |                          |
| <input checked="" type="checkbox"/> Organization List - ICS 203   | <input checked="" type="checkbox"/> Incident Map      | <input type="checkbox"/>     |                          |
| <input checked="" type="checkbox"/> Div. Assignment Lists - ICS 204   | <input checked="" type="checkbox"/> Safety Message    | <input type="checkbox"/>     |                          |
| <input checked="" type="checkbox"/> Communications Plan - ICS205  | <input checked="" type="checkbox"/> Traffic Plan      | <input type="checkbox"/>     |                          |
| <input checked="" type="checkbox"/> Medical Plan - ICS 206  | <input checked="" type="checkbox"/> Unit Log          | <input type="checkbox"/>     |                          |
| <input checked="" type="checkbox"/> Air Operations Summary - ICS 220  | <input checked="" type="checkbox"/>                   | <input type="checkbox"/>     |                          |
| 9. Prepared by (Planning Section Chief)<br>Phillip Weston   | 10. Approved by (Incident Commander)<br>Steve Parrish |                              |                          |

| ORGANIZATION ASSIGNMENT LIST                                     |                                  | 9 Operations Section               |                               |
|--|----------------------------------|------------------------------------|-------------------------------|
| 1. Incident Name<br>TABLE ROCK                                   |                                  | Day                                | Peter Myers/Greg Brooks (t)   |
| 2. Date Prepared<br>11/22/13                                     |                                  | Planning                           | Pete Kubiak/Julian Affuso (t) |
| 3. Time Prepared<br>1826   |                                  | a Branch I - Division/Groups       |                               |
| 4. Operational Period<br>11/23/13 Saturday Day Shift 0700 - 1800 |                                  | Branch Director                    |                               |
| Position   | Name                             | Division A/B/E                     | Dan Martin/Shane Paxton (t)   |
| 5. Incident Commander and Staff                                  |                                  | Division D/G/H                     | Kelly Cagle                   |
| Incident Commander   | Steve Parrish                    | Division F                         | Dale Brittain                 |
| Deputy   | Mike Dueitt                      | Division                           |                               |
| Safety Officer   | Brad Lidell/ Dave Bostic (t)     |                                    |                               |
| Information Officer  | Bonnie Strawser/ Deborah Walker  |                                    |                               |
|  |                                  | b. Branch II - Division/Groups     |                               |
| 6. Agency Representative   |                                  | Branch Director                    |                               |
| Agency   | Name                             | Deputy                             |                               |
| Agency Administrator   | Nicholas Larson/Lauren Stull (t) | Division/Group                     |                               |
| Resource Advisor   | Debbie Thomas                    | Division/Group                     |                               |
| Forest FMO   | Riva Duncan                      | Division/Group                     |                               |
| District FMO   | Brian Browning                   | Division/Group                     |                               |
| Forest Liaison Officer   | Steve Little                     | Division/Group                     |                               |
| 7. Planning Section  |                                  | c. Branch III - Division/Groups    |                               |
| Chief  | Phillip Weston                   | Branch Director                    |                               |
| Chief Trainee  | Jennifer Hinckley                | Deputy                             |                               |
| Computer Specialist  | Rusty Brown                      | Division/Group                     |                               |
| Training Specialist  | John Davis                       | Division/Group                     |                               |
| Resources Unit   | Melonie Sellers                  | Division/Group                     |                               |
| Status/Check-in  | Michael Williams                 | Division/Group                     |                               |
| Demobilization Unit  | Thomas Barrett                   | Division/Group                     |                               |
| Situation Unit   | Jeff DeMatteis                   | d. Air Operations Branch           |                               |
| Incident Meteorologist   | Jon Jelsema                      | Air Operations Branch Director     | Mike Rock                     |
| Fire Behavior Analyst  | Gary Jarvis                      | Helibase Manager                   | Paul Borden                   |
| Long Term Analyst  | Caroline Noble                   | Air Attack Supervisor              |                               |
| GIS/Computer Specialist  | Eric Pullium                     | Helicopter Manager                 | John Holloran                 |
|  |                                  | Helicopter Manager                 | Dave Moore                    |
|  |                                  | Helicopter Manager                 | Dennis Fogel                  |
| 8. Logistics Section   |                                  | 10. Finance Section                |                               |
| Chief  | Peter Dybing                     | Chief                              | Wanda Kelley                  |
| Deputy   | Jerry Jussila                    | Comps/Claims                       | Terri McDonald                |
| Receiving/Distribution   | Chris Combs                      | Time Unit                          | Kim Winkler                   |
| Facilities Unit  | Duane Cihlar                     | Procurement Unit                   | Mike Walker                   |
| Ground Support Unit  | Todd Waller                      | Cost Unit                          | Holly Cyprian (t)             |
| Communications Unit  | Larry Garrett                    | IBA                                | Helen Czernik                 |
| Medical Unit   | Gene-Paul Matson                 | Prepared by (Resource Unit Leader) |                               |
| Security Unit  | Greg Blanks                      | Melonie Sellers                    |                               |
| Ordering   | Kim Brookshire (t)               |                                    |                               |



# INCIDENT Weather Forecast



**FORECAST NO:** 4

**NAME OF FIRE:** Table Rock

**PREDICTION FOR:** DAY SHIFT

**UNIT:** Planning Section

**SHIFT DATE:** 11/23/13

**SIGNED:** Jon Jelsema (240-778-5277)

**TIME AND DATE**

**Incident Meteorologist**

**FORECAST ISSUED:** 1800 – 11/22/13

**WEATHER DISCUSSION:**

Cold high pressure will build in behind the cold front today with gusty northwest winds expected through Sunday. Critical humidity levels and near critical winds are expected on Sunday. Very dry conditions will continue through Monday, but the winds will be much lighter. Rain will spread back into the area in association with the next storm system Tuesday through Wednesday.

**Weather Forecast (Today):**

**Sky/Weather:** Cloudy with a chance of showers in the morning, then becoming partly cloudy by late in the afternoon. Chance of measureable rain 40%.

**Max Temperatures:** 53 to 57

**Min Humidity:** 47-52%

**Wind (20 FT):** Morning: Northwest 6 to 9 mph with gusts to 12 mph.

Afternoon: Northwest 9 to 13 mph with gusts of 20 to 25 mph.

**Mixing Height:** 1000 Feet (Morning), 3000 Feet (Afternoon)

**Transport Winds:** Northwest 15 mph (Morning), Northwest 25 mph (Afternoon).

**Dispersion Index:** 25 – 30 / Fair (Morning), 50-55 / Good (Afternoon).

**Tonight:**

**Sky/Weather:** Partly cloudy in the evening, then mostly clear. Chance of measureable rain 0%.

**Min Temperatures:** 23-27

**Max Humidity:** 60-65%

**Wind (20 FT):** Northwest 14-18 with gusts to 30 mph.

**Mixing Height:** 1500 Feet in the evening, rising to around 2500 feet after midnight.

**Dispersion Index:** 35-40 / Fair

**LAVORI:** 1-3

**Sunday:**

**Sky/Weather:** Sunny and Cold. Chance of measureable rain 0%.

**Max Temperatures:** 34 to 38

**Min Humidity:** 19-24%

**Wind (20 FT):** Morning: Northwest 14 to 18 mph with gusts to 30 mph.

Afternoon: Northwest 10 to 14 mph with gusts of 20-25 mph

**Mixing Height:** 2500 Feet (Morning), 3500 Feet (Afternoon)

**Transport Winds:** North 30-35 mph (Morning), Northwest 20-25 mph (Afternoon).

**Dispersion Index:** 70 – 80 / Excellent (Morning), 60-65 / Excellent (Afternoon).

**Outlook for Monday through Wednesday:**

Slightly warmer temperatures and lighter winds are expected on Monday, but very dry conditions will continue with Minimum RH values of 18-23%. An area of low pressure will develop in the Gulf of Mexico Monday and Monday night, and will track northeastward up the east coast of the United States Tuesday through Wednesday. Rainfall, potentially a significant amount, will spread across the fire beginning on Tuesday and continuing through Wednesday.

# FIRE BEHAVIOR FORECAST

|   |                                     |
|---|-------------------------------------|
| <b>FORECAST NUMBER:</b> 9               | <b>TYPE OF FIRE:</b> Wildfire       |
| <b>FIRE NAME:</b> Table Rock            | <b>OPERATIONAL PERIOD:</b> 11/23/13 |
| <b>DATE ISSUED:</b> November 22th, 2013 | <b>TIME ISSUED:</b> 1700            |
| <b>UNIT:</b> NC-NCF                     | <b>SIGNED:</b> /s/ Gary Jarvis FBAN |

## INPUTS

### WEATHER SUMMARY:

**Cold high pressure will build in behind the cold front today with gusty northwest winds expected through Sunday.**

**Saturday:** Cloudy with a chance of showers in the morning, then clearing in the afternoon. Chance of measureable rain 40%.

Max Temperatures: 53 to 57

Min Humidity: 47-52%

Wind (20 FT): Morning: Northwest 6 to 9 mph with gusts to 12 mph.

Afternoon: Northwest 9 to 13 mph with gusts to 20 to 25 mph

**Saturday Night:** Partly cloudy in the evening, then mostly clear. Chance of measureable rain 0%.

Min Temperatures: 23-27

Max Humidity: 65-75%

Wind (20 FT): Northwest 14-18 with gusts to 30 mph.

**Fuel Model:** Fire behavior fuel model 9, TL2, TL6, TU2

**Fine dead fuel moisture:** 9%

**Probability of ignition:** 33%

## OUTPUTS

### FIRE BEHAVIOR

#### GENERAL:

- Backing fire with ROS from .1 to 2 chains per hour and flame lengths of 1 to 2 feet.
- Moderate intensity uphill spread is possible if the fire spots and establishes itself midslope or lower (ROS – 2 to 12 chains per hour, flame length – 2 to 5 feet).
- Initial Attack fire behavior in fuel models listed above (ROS – 2 to 12 chains/hr. Flame Length – 2 to 5 feet).

#### SPECIFIC:

**All Divisions:** Continued smoldering of heavy fuels (100 and 1000 hour) where residual heat exists.

#### AIR OPERATIONS:

- Expect some fog and drizzle in the morning then mostly cloudy in the afternoon.

## SAFETY

- Safety is the responsibility of everyone assigned to wildland fire, and must be practiced at all operational levels.

|                                 |  |              |                   |
|---------------------------------|--|--------------|-------------------|
| <b>Division Assignment List</b> |  | 1. Branch    | 2. Division/Group |
|                                 |  | <b>A/B/E</b> |                   |

|                                |  |
|--------------------------------|--|
| 3. Incident Name<br>TABLE ROCK | 4. Operational Period<br>11/23/13 Saturday Day Shift 0700 - 1800 |
|--------------------------------|--|

| 5. Operations Personnel   |                     |                      |                           |                  |            |
|---------------------------|---------------------|----------------------|---------------------------|------------------|------------|
| Operations Chief          | Peter Myers 0-109.5 | Greg Brooks(t) 0-122 | Division/Group Supervisor | Dan Martin       | 0-109.12   |
| Planning Operations Chief | Pete Kubiak         | 0-109.6              | Division/Group Supervisor | Shane Paxton (t) | 0-2.1      |
| Planning Operations Chief | Julian Affuso (t)   | 0-109.11             | Safety Officer            | Keith Jenkins    | 0-49 11/26 |

| 6. Resources Assigned this Period           |                          |       |              |            |                   |                  |
|---|--------------------------|-------|--------------|------------|-------------------|------------------|
| Strike Team/Task Force/ Resource Designator | Leader                   |       | Num of Pers. | Trans. Y/N | Drop Off PT./Time | Pick Up PT./Time |
| (E-4) Engine T-6 #671                       | (0-4.4) Jeff Owenby      | 11/25 | 3            |            | 0700              | 1800             |
| (E-15) Engine T-6 #112                      | (0-69) Jason Boone       | 11/26 | 3            |            | 0700              | 1800             |
| (C-1) T-2IA Pat-Rick Module 2               | (C-1.1) Collin McLauchan | 12/01 | 10           |            | 0700              | 1800             |
| (0-2) Smokey Mtn. Fuels Module              | (0-2.6) Jordon Black     | 11/27 | 6            |            | 0700              | 1800             |
| EMT   | (0-8) Frank Abel         | 11/23 | 2            |            | 0700              | 1800             |
|   |                          |       |              |            |                   |                  |
|   |                          |       |              |            |                   |                  |
|   |                          |       |              |            |                   |                  |
|   |                          |       |              |            |                   |                  |
|   |                          |       |              |            |                   |                  |
|   |                          |       |              |            |                   |                  |
|   |                          |       |              |            |                   |                  |
|   |                          |       |              |            |                   |                  |
|   |                          |       |              |            |                   |                  |
|   |                          |       |              |            |                   |                  |
|   |                          |       |              |            |                   |                  |
|   |                          |       |              |            |                   |                  |
|   |                          |       |              |            |                   |                  |
|   |                          |       |              |            |                   |                  |
|   |                          |       |              |            |                   |                  |
|   |                          |       |              |            |                   |                  |
|   |                          |       |              |            |                   |                  |
|   |                          |       |              |            |                   |                  |
|   |                          |       |              |            |                   |                  |

7. Control Operations  
Patrol and monitor control lines.  
Rehab control lines as appropriate.  
Mop-up and improve as needed.

8. Special Instructions  
Maintain LCES.  
Each Division will identify an "Incident within an Incident" IC for that Division, being "\_\_\_\_\_".  
All Resources going to fire need to run through weed wash at ICP.

| 9. Division/Group Communications Summary |                |                |      |        |         |        |         |
|--|----------------|----------------|------|--------|---------|--------|---------|
| Function                                 | Frequency - RX | Frequency - TX | Tone | System | Channel | System | Channel |
| Command                                  |                |                |      |        |         |        |         |
| Tac 1                                    | 170.000        | 170.000        |      |        | 1       |        |         |
| Logistics                                |                |                |      |        |         |        |         |
| Air to Ground                            | 167.425        | 167.425        |      |        | 10      |        |         |

|   |   |                           |                       |
|---|---|---------------------------|-----------------------|
| Prepared by (Resource Unit Leader)<br>Melonie Sellers | Approved by (Planning Section Chief)<br>Phil Weston | Date Prepared<br>11/22/13 | Time Prepared<br>0822 |
|---|---|---------------------------|-----------------------|

|                                 |           |                                   |
|---------------------------------|-----------|-----------------------------------|
| <b>Division Assignment List</b> | 1. Branch | 2. Division/Group<br><b>D/G/H</b> |
|---------------------------------|-----------|-----------------------------------|

|                                       |   |
|---------------------------------------|---|
| 3. Incident Name<br><b>TABLE ROCK</b> | 4. Operational Period<br><b>11/23/13 Saturday Day Shift 0700 - 1800</b> |
|---------------------------------------|---|

**5. Operations Personnel**

|                           |  |                           |                        |
|---------------------------|--|---------------------------|------------------------|
| Operations Chief          | Peter Myers 0-109.5 Greg Brooks(t) 0-122 | Division/Group Supervisor | Kelly Cagle 0-19       |
| Planning Operations Chief | Pete Kubiak 0-109.6                      | Air Attack Supervisor     |                        |
| Planning Operations Chief | Julian Affuso (t) 0-109.11               | Safety Officer            | Gary Mease 0-103 12/01 |

**6. Resources Assigned this Period**

| Strike Team/Task Force/ Resource Designator | Leader                      | Num of Pers. | Trans. Y/N | Drop Off PT./Time | Pick Up PT./Time |
|---|-----------------------------|--------------|------------|-------------------|------------------|
| (E-2) Engine T-6 #651                       | (0-2.2)Renardo Knight 11/25 | 2            |            | 0700              | 1800             |
| (E-3) Engine T-6 Appalachian # 681          | (0-58) Bryan Smith 11/25    | 2            |            | 0700              | 1800             |
| (E-5) Engine T-6 Croatan #631               | (E-5.1) Antonia Hill 11/26  | 3            |            | 0700              | 1800             |
| Pat-Rick Module 1                           | (C-1.2) Garth Bennet 12/01  | 10           |            | 0700              | 1800             |
| TFLD  | (0-54 ) Greg Philipp 11/25  | 1            |            | 0700              | 1800             |
| EMT   | (0-62) Germey Milner 11/26  | 1            |            | 0700              | 1800             |
| (E-7) Dozer T-3                             | (E-7.1) Johnny Bishop 11/27 | 1            |            | 0700              | 1800             |
| UTV   |                             |              |            | 0700              | 1800             |
|   |                             |              |            |                   |                  |
|   |                             |              |            |                   |                  |
|   |                             |              |            |                   |                  |
|   |                             |              |            |                   |                  |
|   |                             |              |            |                   |                  |
|   |                             |              |            |                   |                  |
|   |                             |              |            |                   |                  |
|   |                             |              |            |                   |                  |
|   |                             |              |            |                   |                  |
|   |                             |              |            |                   |                  |
|   |                             |              |            |                   |                  |
|   |                             |              |            |                   |                  |
|   |                             |              |            |                   |                  |
|   |                             |              |            |                   |                  |
|   |                             |              |            |                   |                  |
|   |                             |              |            |                   |                  |
|   |                             |              |            |                   |                  |
|   |                             |              |            |                   |                  |
|   |                             |              |            |                   |                  |
|   |                             |              |            |                   |                  |
|   |                             |              |            |                   |                  |
|   |                             |              |            |                   |                  |
|   |                             |              |            |                   |                  |
|   |                             |              |            |                   |                  |
|   |                             |              |            |                   |                  |
|   |                             |              |            |                   |                  |
|   |                             |              |            |                   |                  |
|   |                             |              |            |                   |                  |

**7. Control Operations**  
 Patrol and monitor control lines.  
 Rehab control lines as appropriate.  
 Mop-up and improve as needed.  
 Stage E-2,E-3,E-7 @ DP7.

**8. Special Instructions**  
 Each Divison will identify an "Incident within an Incident". IC for that Divison, being " \_\_\_\_\_ ".  
 All Resources going to fire need to run through weed wash at ICP.

**9. Division/Group Communications Summary**

| Function      | Frequency - RX | Frequency - TX | Tone | System | Channel | System | Channel |
|---------------|----------------|----------------|------|--------|---------|--------|---------|
| Command       |                |                |      |        |         |        |         |
| Tac 4         | 168.050        | 168.050        |      |        | 4       |        |         |
| Logistics     |                |                |      |        |         |        |         |
| Air to Ground | 167.425        | 167.425        |      |        | 10      |        |         |

|   |   |                           |                       |
|---|---|---------------------------|-----------------------|
| Prepared by (Resource Unit Leader)<br>Melonie Sellers | Approved by (Planning Section Chief)<br>Phil Weston | Date Prepared<br>11/22/13 | Time Prepared<br>0822 |
|---|---|---------------------------|-----------------------|

|                                       |  |  |
|---------------------------------------|--|--|
| <b>Division Assignment List</b>       | 1. Branch  | 2. Division/Group<br><b>F</b>                |
| 3. Incident Name<br><b>TABLE ROCK</b> | 4. Operational Period<br>11/23/13 Saturday Day Shift 0700 - 1800 |  |
| 5. Operations Personnel               |  |  |
| Operations Chief                      | Peter Myers 0-109.5 Greg Brooks(t) 0-122                         | Division/Group Supervisor Dale Brittain 0-51 |
| Planning Operations Chief             | Pete Kubiak 0-109.6  | Air Attack Supervisor                        |
| Planning Operations Chief             | Julian Affuso (t) 0-109.11                                       | Safety Officer Mickey Bunton 0-48 11/27      |

| 6. Resources Assigned this Period           |                              |              |            |                   |                  |  |
|---|------------------------------|--------------|------------|-------------------|------------------|--|
| Strike Team/Task Force/ Resource Designator | Leader                       | Num of Pers. | Trans. Y/N | Drop Off PT./Time | Pick Up PT./Time |  |
| (E-6) Engine T-6 Croatan #632               | (E-6.1) Markeith Teel 11/26  | 2            |            | 0700              | 1800             |  |
| (0-5) Cherokee IHC                          | (0.5.1) Chris Witkus 11/28   | 9            |            | 0700              | 1800             |  |
| EMT   | (0-64) Kenneth Kessler 11/28 | 1            |            | 0700              | 1800             |  |
| EMT   | (0-63) Chris Warwreck 11/29  | 1            |            | 0700              | 1800             |  |
|   |                              |              |            |                   |                  |  |
|   |                              |              |            |                   |                  |  |
|   |                              |              |            |                   |                  |  |
|   |                              |              |            |                   |                  |  |
|   |                              |              |            |                   |                  |  |
|   |                              |              |            |                   |                  |  |
|   |                              |              |            |                   |                  |  |
|   |                              |              |            |                   |                  |  |
|   |                              |              |            |                   |                  |  |
|   |                              |              |            |                   |                  |  |
|   |                              |              |            |                   |                  |  |
|   |                              |              |            |                   |                  |  |
|   |                              |              |            |                   |                  |  |
|   |                              |              |            |                   |                  |  |
|   |                              |              |            |                   |                  |  |
|   |                              |              |            |                   |                  |  |
|   |                              |              |            |                   |                  |  |
|   |                              |              |            |                   |                  |  |
|   |                              |              |            |                   |                  |  |
|   |                              |              |            |                   |                  |  |
|   |                              |              |            |                   |                  |  |
|   |                              |              |            |                   |                  |  |

7. Control Operations  
 Rehab control lines as appropriate.  
 Improve as needed.

8. Special Instructions  
 Maintain LCES.  
 Each Division will identify an "Incident within an Incident" IC for that Division being "\_\_\_\_\_".  
 Resources leaving DIV F going to other Divisions, need to use engine at DP7 to weed wash to minimize invasive spread.  
 All Resources going to fire need to run through weed wash at ICP. Rehab lines according to plan.

| 9. Division/Group Communications Summary |                |                |      |        |         |        |         |
|--|----------------|----------------|------|--------|---------|--------|---------|
| Function                                 | Frequency - RX | Frequency - TX | Tone | System | Channel | System | Channel |
| Command                                  |                |                |      |        |         |        |         |
| Tac 3                                    | 168.600        | 168.600        |      |        | 3       |        |         |
| Logistics                                |                |                |      |        |         |        |         |
| Air-to Ground                            | 167.425        | 167.425        |      |        | 10      |        |         |

|   |   |                           |                       |
|---|---|---------------------------|-----------------------|
| Prepared by (Resource Unit Leader)<br>Melonie Sellers | Approved by (Planning Section Chief)<br>Phil Weston | Date Prepared<br>11/22/13 | Time Prepared<br>0823 |
|---|---|---------------------------|-----------------------|



# AIR OPERATIONS SUMMARY

Prepared By: Mike Rock

Prepared Date: 11/22/13

Prepared Time: 1700

|  |  |                         |  |                      |                     |
|--|--|-------------------------|--|----------------------|---------------------|
| <b>1. NAME:</b> Catawba Helibase   | <b>2. OPS PERIOD DATE:</b> Saturday, Nov. 23, 2013 | <b>START TIME:</b> 0800 | <b>END TIME:</b> 1900                        | <b>SUNRISE:</b> 0711 | <b>SUNSET:</b> 1715 |
| <b>3. REMARKS (Safety Notes, Hazards, Air Operations Special Equipment, etc.):</b>             |  |                         | <b>4. READY ALERT AIRCRAFT</b>               |                      |                     |
| Mission Request thru DIVS to HLB   |  |                         | MEDIVAC or IA- Either depending availability |                      |                     |
| H1 - 35 53 6.73 X 81 52 19.83, H2 - 35 47 48.53 X 81 53 18.23, H3 - 35 49 49.02 X 81 51 39.05, |  |                         | 5. TFR 3-9717<br>5500 AGL                    |                      |                     |
| H4 - 35 52 15.56 X 81 52 47.70, H5 - 35 48 35.96 X 81 53 44.96 (ddd° mm' ss.s")                |  |                         |  |                      |                     |

| 6. PERSONNEL | NAME        | PHONE #      | 7. FREQUENCIES  | AM | FM              | 8. FIXED-WING- Type/ Make-Model/ N#/ Base |
|--------------|-------------|--------------|-----------------|----|-----------------|---|
| AOBD         | Mike Rock   | 606-599-2377 | AIR/ AIR FW     |    |                 | AIRTANKERS-                               |
| HEB2         | Paul Borden | 252-671-4576 | AIR/ AIR RW- FF |    | 122.925         | LEAD PLANES-                              |
| HEB2(T)      | Hans Egholm | 585-278-4206 | AIR/ GROUND     |    | 167.425<br>TXRX | Attached resources include Oak Hill       |
|              |             |              | COMMAND         |    |                 | Engine 4 (Dan) 828-448-0851               |
|              |             |              | DECK            |    | 163.100         | Dive Boat (John) 828-334-4190             |
|              |             |              | TOLC            |    | N/A             |   |
|              |             |              |                 |    |                 | OTHER FW AIRCRAFT-                        |

9. HELICOPTERS (Use Additional Sheets as Necessary)

| FAA N# | TY  | MAKE/ MODEL | BASE      | AVAIL | START | Managers      | FAA N# | T | MAKE/ MODEL | BASE | AVAIL | START | REMARKS      |
|--------|-----|-------------|-----------|-------|-------|---------------|--------|---|-------------|------|-------|-------|--------------|
| 3HA    | III | Bell 407    | ICP-field | 0800  | 0900  | John Holloran |        |   |             |      |       |       | 423-715-5428 |
|        |     |             |           |       |       |               |        |   |             |      |       |       |              |
|        |     |             |           |       |       |               |        |   |             |      |       |       |              |
|        |     |             |           |       |       |               |        |   |             |      |       |       |              |
|        |     |             |           |       |       |               |        |   |             |      |       |       |              |

10. TASK/ MISSION/ ASSIGNMENT (Type/ function includes: Air Tactical, Retardant, Recon, Personnel Transport, Bucket Operations, SAR, etc.

| TYPE/FUNCTION | NAME OF PERSONNEL OR CARGO (if applicable) or Instructions for tactical aircraft | MISSION START | FLY FROM | FLY TO |
|---------------|--|---------------|----------|--------|
|               |  |               |          |        |
|               |  |               |          |        |
|               |  |               |          |        |

# HEALTH AND SAFETY MESSAGE

**INCIDENT:** Table Rock

**DATE:** Saturday, November 23, 2013

**TIME:** Day Shift

## *Major Hazards and Risks:*

### **Travel and Change**

#### **If you are LEAVING...**

Your assignment doesn't stop when you walk away from Demob. Your final assignment is to arrive safely at home. The 2-to-1 work-rest policy still applies.

- \* Drive defensively. Human nature makes us less patient when driving home. Do not let impatience cause unsafe behavior.
- \* No driver will drive more than 10-hours within any duty-day.
- \* Multiple drivers in a single vehicle may drive up to the 12-hours limitation provided no driver exceeds the individual driving time limitation of 10-hours.
- \* Do not travel past 2200 hours. Do not eat and drive at the same time.
- \* Don't use the cell phone while driving. Pull off the road or call during your stretch breaks.

#### **If you are STAYING...**

**Common Denominators of Fire Behavior on Tragedy Fires:** Tragedies have occurred in periods of reduced fire activity, transitions, and mop-up stage. Maintain your situational awareness. Focus on your assignment. Manage distractions.

**Communications:** As the transition takes place, the need to effectively communicate on the fire is important. Take personal responsibility to ensure that people you interact with know what they need to know. Transition brings new faces and different ways of communicating. Make it work!

We look forward to seeing you on a future assignment with the SAIMT.



/s/ Brad Lidell SOF2 & /s/ Dave Bostic SOF2 (T)

Southern Area Type II IMT, Safety Officers

**INCIDENT ACTION PLAN SAFETY ANALYSIS**1. Incident Name  
Table Rock2. Date  
11/23/20133. Time  
0700LCES Analysis of Tactical Applications  
Lookouts Communication Escape Routes Safety Zones

Other Risk Analysis

| Division / Group | Indirect Fireline | Downhill Fireline | Underslung Fireline | Mid-slop Fireline | Dozer Operations | Anchor Points | Unurned Area / Dirty Burn | Reburn Potential | Snags & Rolling Rocks | Smoke / Fog | LCES Mitigations   | Hazard Materials | Transportation, 1HR+ | Communications | Structure Protection | Multi Aircraft | DeerSeason-Weekend Traffic | Other Risk Mitigations  |  |
|------------------|-------------------|-------------------|---------------------|-------------------|------------------|---------------|---------------------------|------------------|-----------------------|-------------|--|------------------|----------------------|----------------|----------------------|----------------|----------------------------|---|--|
| A/B/<br>E        |                   | 1,2,3             |                     |                   |                  |               | 1,2,4                     |                  | 1,2,4                 | 1,2,6       | 1. Establish & maintain LCES   | 2                | 1                    |                | 2                    |                | 1,3                        | 1. Drive defensively, drive with headlights, seatbelts on. Use backer.        |  |
| D/G/<br>H        | 1,4,6             | 1,2,3             |                     |                   | 1,2              |               | 1,3,4,5                   |                  | 2,4,5                 | 1,2,6       | 2. Look Up, Look Down, Look Around   | 2                |                      |                |                      |                | 1,3                        | 2. Follow specific hazard protocol in IRPG. Pages 17-38. Brief all personnel. |  |
| F                | 1,4,6             | 1,2,3             |                     | 1,2,3,4           | 1,2              |               | 1,3,4,5                   |                  | 2,4,5                 | 1,2,6       | 3. Ensure fireline is anchored.<br>4. Ensure FFTRs have current fire WX.<br>5. Flag Hazard trees, post lookouts. | 2                | 1                    |                | 2                    |                | 1,3                        | 3. Report all private vehicles on closed roads.                               |  |
|                  |                   |                   |                     |                   |                  |               |                           |                  |                       |             | 6. Get off mountain before fog sets in. Drive with lights on, maintain proper following distance & reduce speed. |                  |                      |                |                      |                |                            |   |  |
|                  |                   |                   |                     |                   |                  |               |                           |                  |                       |             |  |                  |                      |                |                      |                |                            |   |  |
|                  |                   |                   |                     |                   |                  |               |                           |                  |                       |             |  |                  |                      |                |                      |                |                            |   |  |
|                  |                   |                   |                     |                   |                  |               |                           |                  |                       |             |  |                  |                      |                |                      |                |                            |   |  |
|                  |                   |                   |                     |                   |                  |               |                           |                  |                       |             |  |                  |                      |                |                      |                |                            |   |  |
|                  |                   |                   |                     |                   |                  |               |                           |                  |                       |             |  |                  |                      |                |                      |                |                            |   |  |
|                  |                   |                   |                     |                   |                  |               |                           |                  |                       |             |  |                  |                      |                |                      |                |                            |   |  |
|                  |                   |                   |                     |                   |                  |               |                           |                  |                       |             |  |                  |                      |                |                      |                |                            |   |  |

Prepared by (Name and Position) /s/Keith M. Jenkins SOF2

ICCS 215A

| <b>MEDICAL PLAN</b>                      | 1. Incident Name                           | 2. Date Prepared | 3. Time Prepared | 4. Operational Period |         |    |             |    |
|--|--|------------------|------------------|-----------------------|---------|----|-------------|----|
|  | <b>Table Rock</b>                          | <b>11/21/13</b>  | <b>1800</b>      | <b>ALL</b>            |         |    |             |    |
| <b>5. Incident Medical Aid Station</b>   |  |                  |                  |                       |         |    |             |    |
| Medical Aid Stations                     | Location                                   | Paramedics       |                  | Yes                   | No      |    |             |    |
|  |  | Yes              | No               |                       |         |    |             |    |
| Frank Abel 423-595-1578                  | See 204 for DIV assignment                 | X                |                  |                       |         |    |             |    |
| Jeremy Milner 720-227-5358               | See 204 for DIV assignment                 |                  | X                |                       |         |    |             |    |
| Chris Warnock 231-920-8730               | See 204 for DIV assignment                 |                  | X                |                       |         |    |             |    |
| Kenny Kessler 318-729-6442               | See 204 for DIV assignment                 |                  | X                |                       |         |    |             |    |
| <b>6. Transportation</b>                 |  |                  |                  |                       |         |    |             |    |
| A. Ambulance Services                    |  |                  |                  |                       |         |    |             |    |
| Name                                     | Address                                    | Phone            | Paramedics       |                       |         |    |             |    |
|  |  |                  | Yes              | No                    |         |    |             |    |
| Burke County EMS                         | Morganton, NC                              | 911 828-437-1911 | X                |                       |         |    |             |    |
|  | <u>AIR</u><br><u>AMBULANCES</u>            |                  |                  |                       |         |    |             |    |
| MAMA - Asheville                         | Travel time 25-35 mins                     |                  | X                |                       |         |    |             |    |
| Wings Air Rescue – Johnson City, TN      | Travel time 25-35 mins                     |                  | X                |                       |         |    |             |    |
| B. Incident Ambulances                   |  |                  |                  |                       |         |    |             |    |
| Name                                     | Location                                   | Paramedics       |                  | Yes                   | No      |    |             |    |
|  |  | Yes              | No               |                       |         |    |             |    |
| Burke Co EMS                             | DP 4 and DP 8                              | X                |                  |                       |         |    |             |    |
|  | <u>TECHNICAL RESCUE</u>                    |                  |                  |                       |         |    |             |    |
| NC H.A.R.T. Technical Rescue             | Accessed by 911                            |                  |                  |                       |         |    |             |    |
| <b>7. Hospitals</b>                      |  |                  |                  |                       |         |    |             |    |
| Name                                     | Address                                    | Travel Time      |                  | Phone                 | Helipad |    | Burn Center |    |
|  |  | Air              | Grnd             |                       | Yes     | No | Yes         | No |
| Grace Hospital                           | Morganton, NC<br>35° 43.34' 81° 39.17'     | 10m              | 45m              | 828-659-5175          | X       |    |             | X  |
| Johnson City Medical Center Level 1      | Johnson City, TN<br>36° 18.449' 82° 23.31' | 25m              | 90m              | 423-431-6561          | X       |    |             | X  |
| Memorial Mission Hospital Level II       | Asheville, NC<br>35° 34.533' 82° 32.911'   | 25m              | 90m              | 828-213-1948          | X       |    |             | X  |
| Wake Forest Baptist Level 1/ Burn Center | Winston Salem, NC<br>36° 5.39' 80° 16.02'  | 50m              | 180m             | 336-713-9000          | X       |    | X           |    |

# Injury Communication Procedure

The first person on scene contact should contact the DIVS The DIVS will contact Command in all injury situations.

**DO NOT use the name of the injured individual over the radio.**

In the event of a minor injury, as noted by the person calling in the medical emergency, so state when relaying information so a false sense of urgency is not produced.

## Medical Information

Is the injury: Remote Location \_\_\_\_\_  
Critical \_\_\_\_\_ Serious \_\_\_\_\_ Minor \_\_\_\_\_

Type of injury: \_\_\_\_\_

Is the patient conscious: Yes \_\_\_\_\_ No \_\_\_\_\_

Is the patient experiencing any difficulty breathing: Yes \_\_\_\_\_ No \_\_\_\_\_

Is there uncontrolled bleeding: Yes \_\_\_\_\_ No \_\_\_\_\_

Is an EMT present and giving treatment: Yes \_\_\_\_\_ No \_\_\_\_\_

Is an EMT needed: Yes \_\_\_\_\_ No \_\_\_\_\_

Is ALS (Advanced Life Support) needed: Yes \_\_\_\_\_ No \_\_\_\_\_

Specific location of patient( Lat/Long,DP, Helispot ) \_\_\_\_\_ (Deg, Min.dec

Is a helicopter needed for Evacuation: Yes \_\_\_\_\_ NO \_\_\_\_\_

Name of radio contact, channel, or frequency: \_\_\_\_\_

Best route to patient for ground transportation: \_\_\_\_\_

**All EMERGENCIES: -- Secure the area and identify witness for later investigation.**

**Keep an accurate log of events.**

---

### Medical Radio Procedures

In a medical emergency, communications will:

1. Immediately notify MEDL and Command and General Staff (ensure contact of DIVS, and EMT listed in medical plan). **The DIVS will command (or delegate) the incident response scene, coordinating with the accident EMT and MEDL.**

MEDL will:

insure all section chiefs are informed:

C&G Checklist: IC\_\_ Information Officer\_\_ Log Chief\_\_ Finance Section Chief\_\_ Ops Chief\_\_ Safety\_\_ Plans Chief\_\_ Security\_\_

2. Acquire pertinent medivac information on form above.

If air transportation is required, notify Air Ops about medical aircraft

Keep log of all emergency radio traffic, departure and arrival times, and other pertinent information.

**INCIDENT RADIO COMMUNICATIONS PLAN**

1. Incident Name **Table Rock**      2. Date/Time Prepared **11/22/13**      3. Operational Period Date/Time **11/23/13**

**4. BASIC RADIO CHANNEL UTILIZATION**

| Radio Type/Cache | Channel  | Function             | Frequency/Tone                                 | Wide/<br>Narrow | Assignment     | Remarks |
|------------------|----------|----------------------|--|-----------------|----------------|---------|
| King NIFC        | Ch 1     | Tac 1                | Rx/Tx 170.000                                  | N               | Division A/B   |         |
| King NIFC        | CH 2     | A / G Secondary      | Rx/Tx 166.675                                  | N               | Secondary      |         |
| King NIFC        | CH 3     | Tac 3                | Rx/Tx 168.600                                  | N               | Division F     |         |
| King NIFC        | CH 4     | Tac 4                | Rx/Tx 168.050                                  | N               | Division D/G/H |         |
| King NIFC        | CH 5     | Tac 5                | Rx/Tx 168.200                                  | N               | Division E     |         |
| King NIFC        | CH 6     | Clingman Repeater    | Rx 168.725 Tone 103.5<br>Tx 172.225 Tone 136.5 | N               | Command        |         |
| King NIFC        | CH 7     | High Peak Repeater   | Rx 168.725 Tone 103.5<br>Tx 172.225 Tone 103.5 | N               | Command        |         |
| King NIFC        | CH 8     | Grandmother Repeater | Rx 168.725 Tone 103.5<br>Tx 172.225 Tone 146.2 | N               | Command        |         |
| King NIFC        | CH 9     | A / G Forest         | Rx/Tx 164.150                                  | N               | Forest IA      |         |
| King NIFC        | CH 10    | A / G Primary        | Rx/Tx 167.425                                  | N               | Primary        |         |
| King NIFC        | CH 11    | Initial Attack       | Rx/Tx 169.900                                  | N               | IA             |         |
| King NIFC        | Ch 12    | Open                 |  | N               |                |         |
| King NIFC        | Ch 13/16 | Open                 |  | N               |                |         |

5. Prepared By (Communications Unit Leader)  
ICP Communication 828-337-7998

ICS 205

NFS 1330

## Table Rock Land Line Phone Numbers

|                        |   |
|------------------------|---|
| Fire Information       | 828-432-9817                              |
| DEMOB                  | 828-437-5743                              |
| Training               | 828-430-6951                              |
| Plans                  | 828-438-1652                              |
| Finance Time           | 828-433-5118                              |
| Finance Cost           | 828-433-0349                              |
| Finance Fax #          | 828-433-5046                              |
| SITL/FBAN/IMET/LTAN    | 828-433-0351                              |
| Buying Team            | 828-439-2383                              |
| Buying FAX #           | 828-433-0441                              |
| Ordering               | Please use # 404-354-5349<br>828-438-1747 |
| Medical/Ground Support | MEDL Cell # 434-665-0444<br>828-430-6962  |
| Facilities             | 828-433-4899                              |

**Table Rock Fire - Southern Area Type II Team - Cell Phone Numbers**

| <u>Name</u>          | <u>Position</u> | <u>Number</u> |
|----------------------|-----------------|---------------|
| Parrish, Steve       | ICT2            | 850-524-1244  |
| Lidell, Brad         | SOF2            | 812-583-5543  |
| Strawser, Bonnie     | PIO2            | 252-423-0815  |
| Czernik, Helen       | IBA2            | 252-619-0366  |
| Kubiak, Peter        | OSC2            | 404-661-4819  |
| Rock, Mike           | AOBD            | 606-599-2377  |
| Weston, Phillip      | PSC2            | 850-556-3684  |
| Dybing, Peter        | LSC2            | 772-284-3553  |
| Kelley, Wanda        | FSC2            | 423-584-1472  |
| Brittain, Dale       | DIVS            | 828-201-7913  |
| Affuso, Julian       | DIVS            | 850-570-9090  |
| Martin, Daniel       | DIVS            | 479-774-5793  |
| Crews, Tom           | DIVS            | 252-216-6361  |
| Sellers, Melonie     | RESL            | 601-508-8997  |
| Barrett, William     | RESL            | 478-689-5144  |
| DeMatteis, Jeff      | SITL            | 601-415-9080  |
| Jarvis, Gary         | FBAN            | 251-882-1084  |
| Brown, Rusty         | CTSP            | 478-973-6231  |
| Davis, John          | TNSP            | 231-878-0074  |
| Noble, Caroline      | LTAN            | 850-591-7122  |
| Jussila, Jerry       | LSC2            | 218-235-8983  |
| Garrett, Larry       | COML            | 404-354-5279  |
| Waller, Todd         | GSUL            | 501-337-6308  |
| Matson, Gene-Paul    | MEDL            | 434-665-0444  |
| Cihlar, Duane        | SPUL            | 218-370-1662  |
| Blanks, Gregory      | SECM            | 912-210-3976  |
| Winkler, Kimberly    | TIME            | ***_***_****  |
| McDonald, Teresa     | COMP/CLAIMS     | 352-454-5385  |
| Bostic, Dave         | SOF2(T)         | 540-312-4786  |
| Williams, Michael    | SCKN(T)/GISS    | 828-835-0094  |
| Cyprian, Holly       | COST(T)         | 928-919-3027  |
| Brookshire, Kimberly | ORDM(T)         | 404-354-5349  |
| Hinckley, Jennifer   | PSC2 (T)        | 850-559-4611  |
| Taylor, Frank        | RADO            | 828-337-7998  |
| Melear, Carl         | FOBS            | 706-232-8988  |
| Jelsema, Jonathon    | IMET            | 240-778-5277  |
| Woldu, Takele        | BUYM            | 828-280-3052  |
| Updegraff, Kelly     | BUYM            | 912-271-1519  |
| Brooks, Greg         | OSC2(T)         | 828-421-5025  |



|    | A   | B                      | C                    |
|----|---|------------------------|----------------------|
| 1  | <b>Table Rock Fire Cell Phone Numbers</b> |                        |                      |
| 2  |   |                        |                      |
| 3  | <b><u>Name</u></b>                        | <b><u>Position</u></b> | <b><u>Number</u></b> |
| 4  | Little, Steve                             | FLIA                   | 828-778-2077         |
| 5  | McFee, Dave                               | SOFR                   | 828-208-9930         |
| 6  | Larson, Nick                              | AADM                   | 828-442-9768         |
| 7  | Walker, Deborah                           | PIO2(T)                | 910-975-0803         |
| 8  | Simon, Donald                             | PIO                    | 910-975-1895         |
| 9  | Finnan, David                             | READ                   | 828-577-4481         |
| 10 | Smith, Brian                              | ENGB                   | 828-284-7877         |
| 11 | Paxton, Shane                             | DIVS A-B               | 865-414-6460         |
| 12 | Frisbee, Chase                            | TFLD F                 | 828-553-1055         |
| 13 | Nelson, David                             | TFLD(t) E              | 252-571-2325         |
| 14 | Phillip, Greg                             | TFLD D-H               | 828-460-0049         |
| 15 | Cagle, Kelly                              | DIVS D-H               | 336-302-0343         |
| 16 | Pullium, Eric                             | GIST                   | 828-644-8966         |
| 17 | Smallman, Dave                            | RCDM                   | 828-778-2076         |
| 18 | Lyda-Taylor, Kerri                        | PTRC                   | 828-776-5989         |
| 19 | Walker, Mike                              | PA50                   | 828-337-1312         |
| 20 | Paul Borden                               | HEB2                   | 252-671-4576         |
| 21 | Rhea, Rusty                               | HEBM                   | 828-273-4322         |
| 22 | Egholm, Hans                              | HMGB                   | 585-278-4206         |
| 23 | Able, Frank                               | EMTF                   | 423-595-1578         |
| 24 | Kessler, Kenneth                          | EMTF                   | 318-729-6442         |
| 25 | Crisp, Jason                              | Lead LEO               | 828-442-2470         |
| 26 | Vines, Nick                               | Night SEC1             | 423-297-3181         |
| 27 | Barnett, Steve                            | Night SEC1             | 252-671-5787         |
| 28 | Murphy, Jerry                             |                        | 828-208-1768         |
| 29 | Roper, James                              |                        | 828-208-3782         |
| 30 | Barber, Chuck                             | Camp Crew              | 423-773-6789         |
| 31 |   |                        |                      |
| 32 | <b>ICP FAX</b>                            |                        | <b>828-438-5287</b>  |

TRAINING  
NOVEMBER 23

Trainees – have you browsed your task book today?

- Use it as a job aid – your PTB has lots of checklists to help guide you and your trainer through the “competencies and behaviors” of the specific task being evaluated.
- Discuss with your trainer/evaluator what tasks you might complete today.
- Know your task book - plan ahead - look for opportunities!

Table Rock Rostered Trainee “Positions”:

|           | Command | Operations | Plans | Logistics | Finance | Air Ops | Total |
|-----------|---------|------------|-------|-----------|---------|---------|-------|
| USFS      | 4       | 8          | 2     | 4         | 2       | 5       | 25    |
| NPS       |         | 2          |       |           |         |         | 2     |
| BLM       |         |            |       |           |         |         | 0     |
| BIA       |         | 5          |       |           |         |         | 5     |
| FWS       |         |            | 1     |           | 1       |         | 2     |
| State     |         | 1          |       |           |         |         | 1     |
| Local Gov |         |            |       |           |         |         | 0     |
| Total     | 4       | 16         | 3     | 4         | 3       | 5       | 35    |

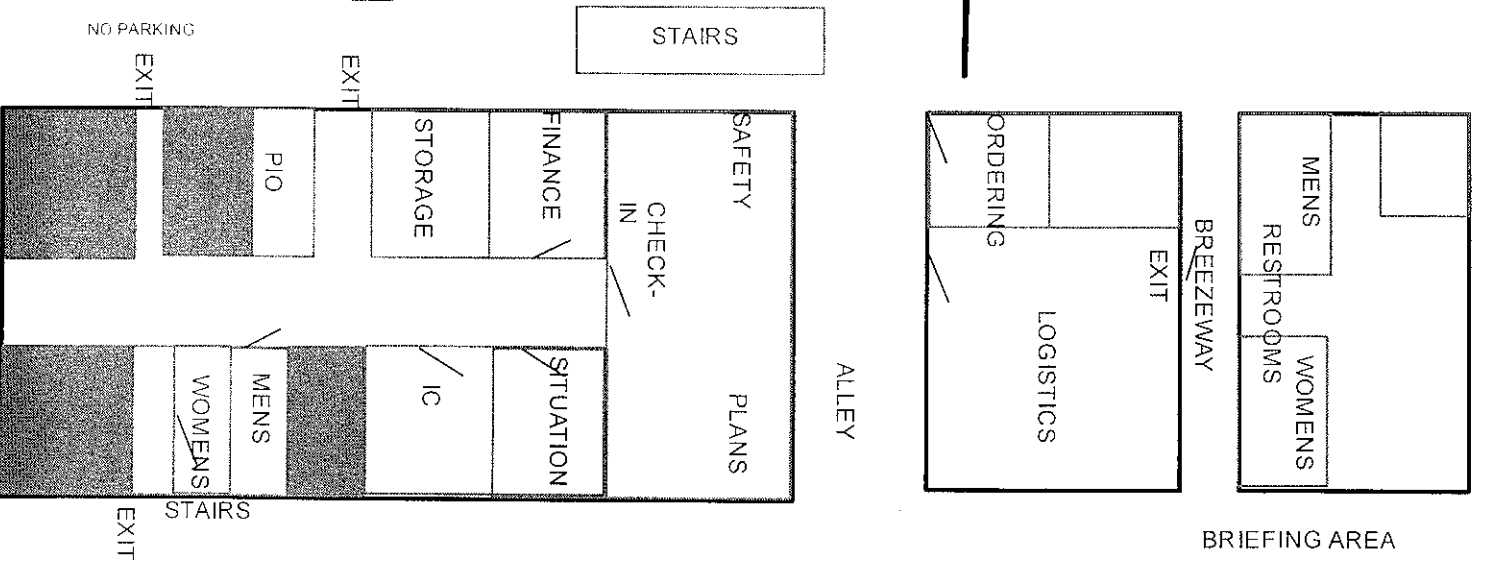
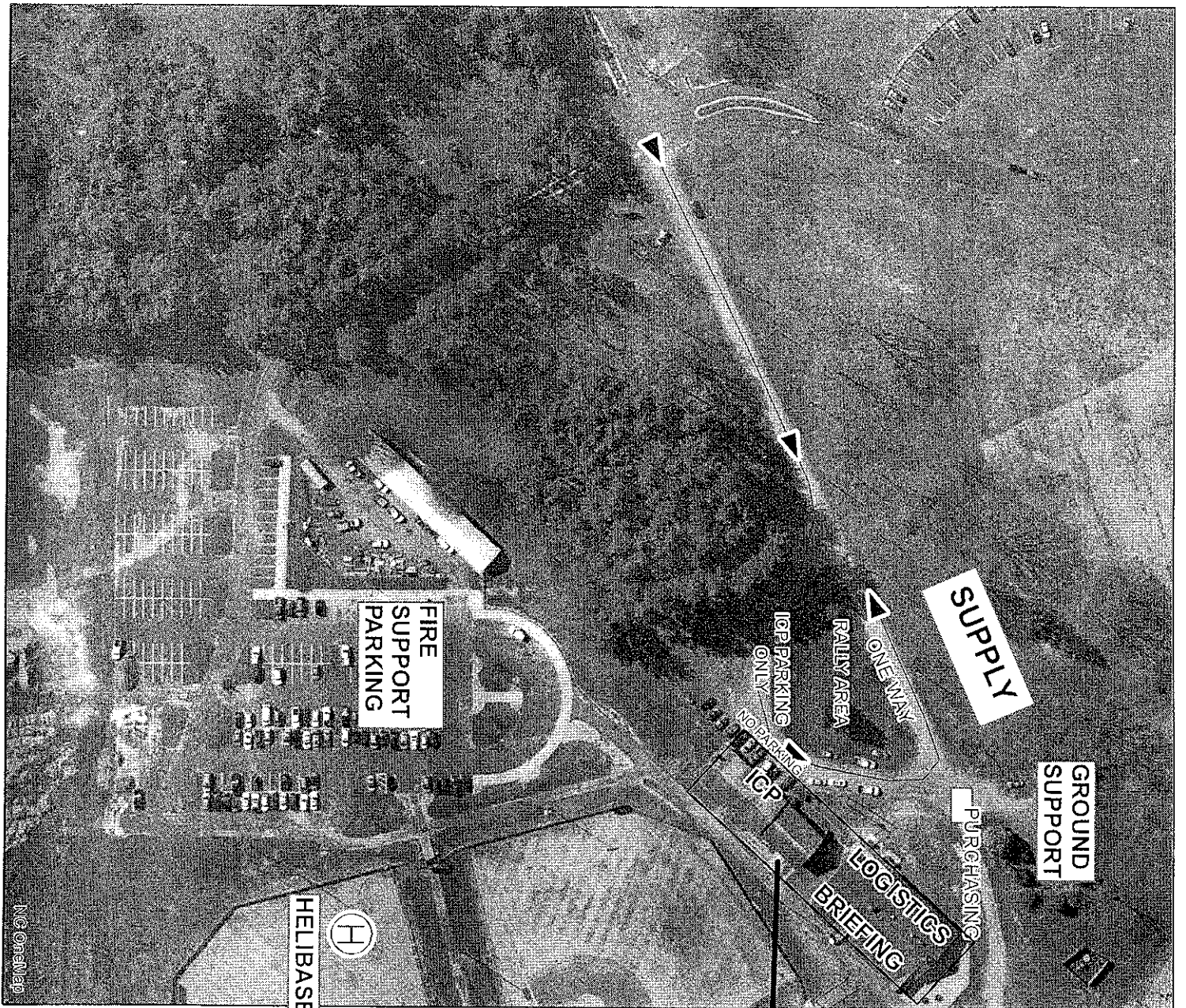
The current roster shows 34 trainees working in 22 different ICS positions.

**Training Watch Out**

**Your trainer asks you “So how do these darn task books work anyhow?”**

“Men are wise in proportion, not to their experience, but to their capacity for experience.”  
- James Boswell (1740-1795)

John Davis, Training Specialist



ING OnaMap

# Table Rock Fire Vicinity Map

11/21/2013

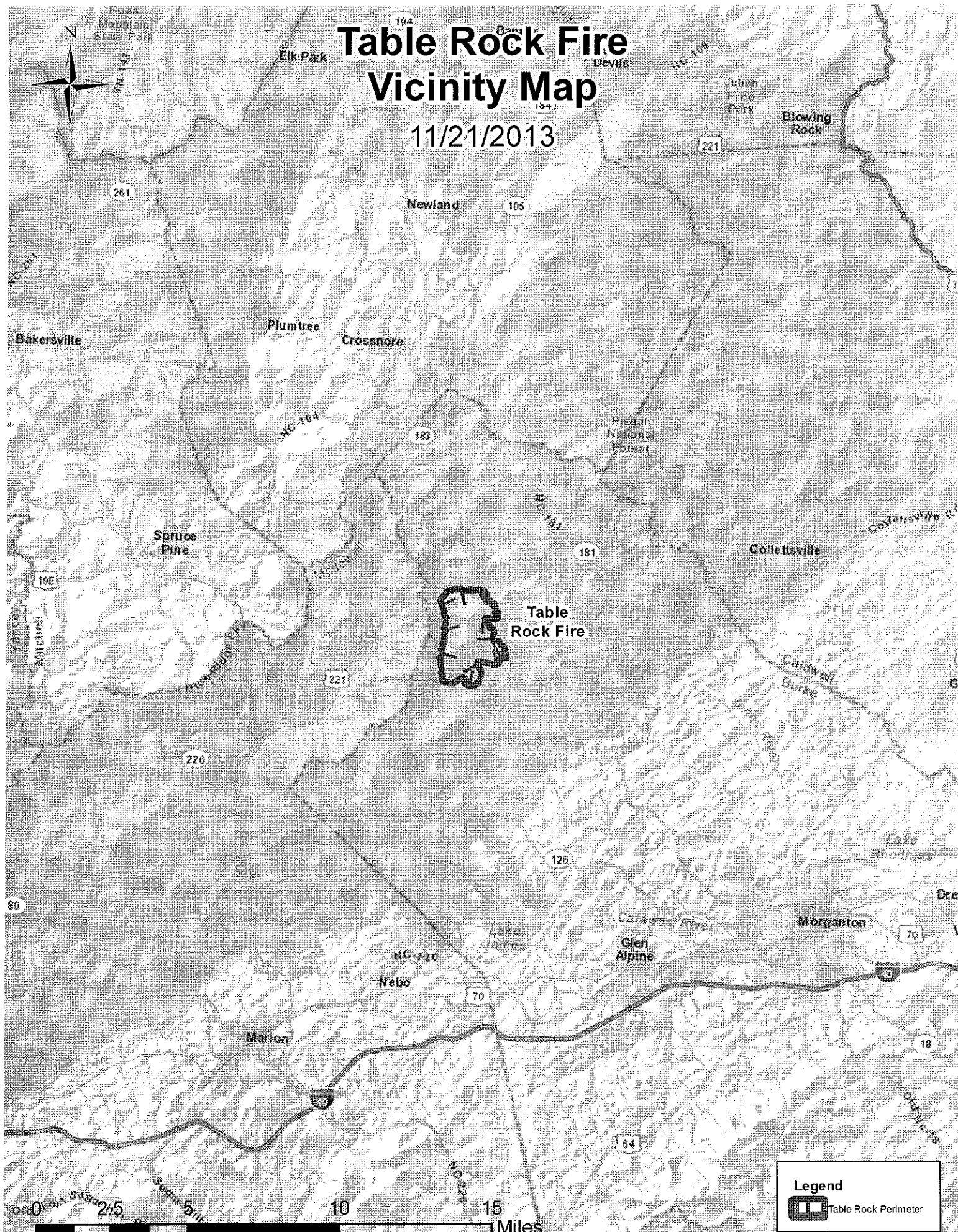



Table  
Rock Fire

**Legend**

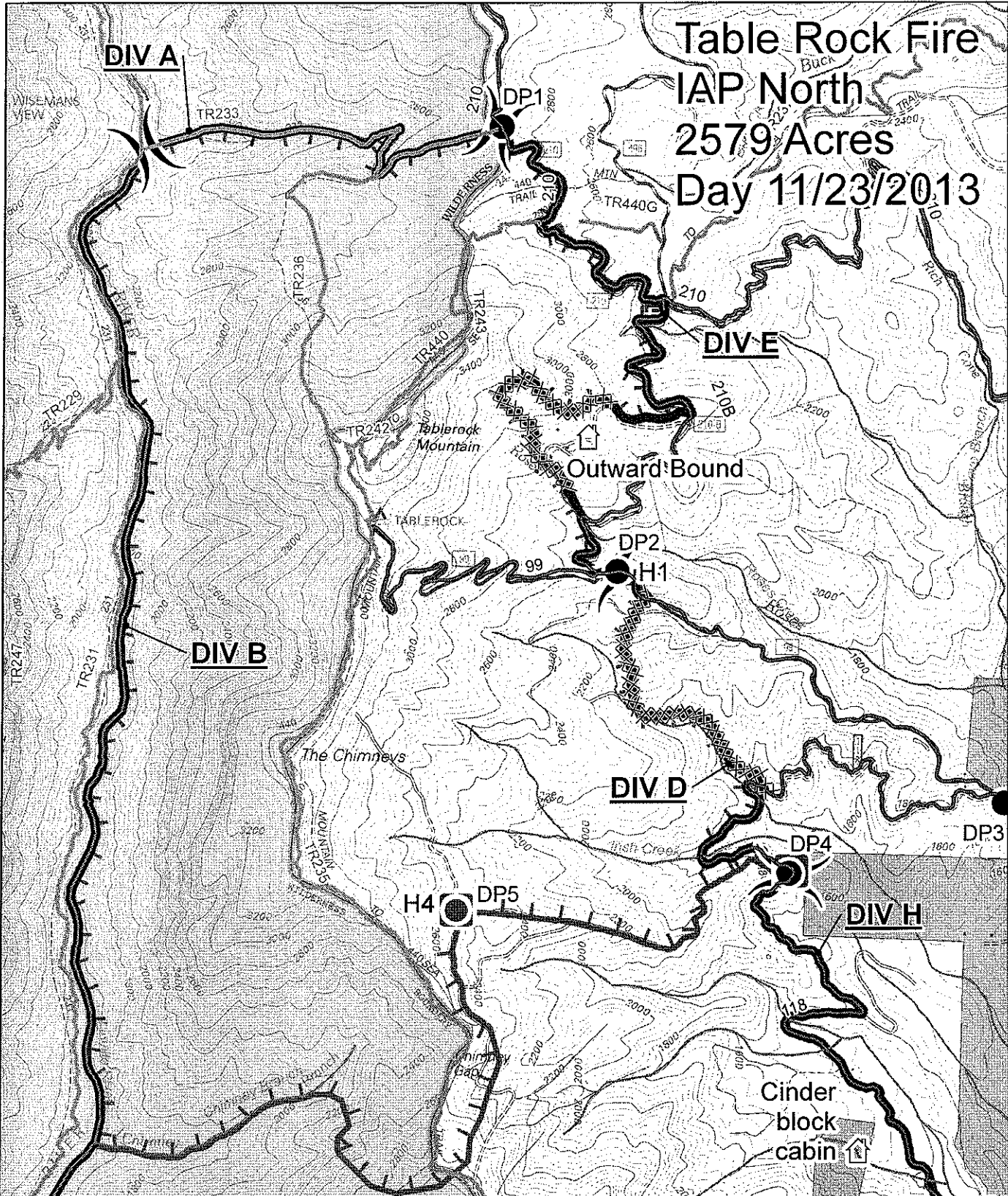
-  Table Rock Perimeter

10 15 Miles

Sources: Esri, DeLorme, NAVTEQ, USGS, Intermap, iPC, NRCAN, Esri Japan, METI, Esri China (Hong Kong), Esri (Thailand), TomTom, 2013

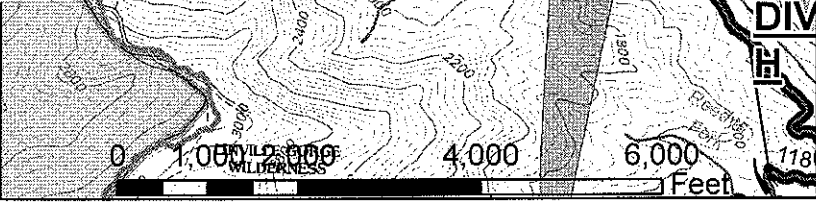


# Table Rock Fire IAP North 2579 Acres Day 11/23/2013

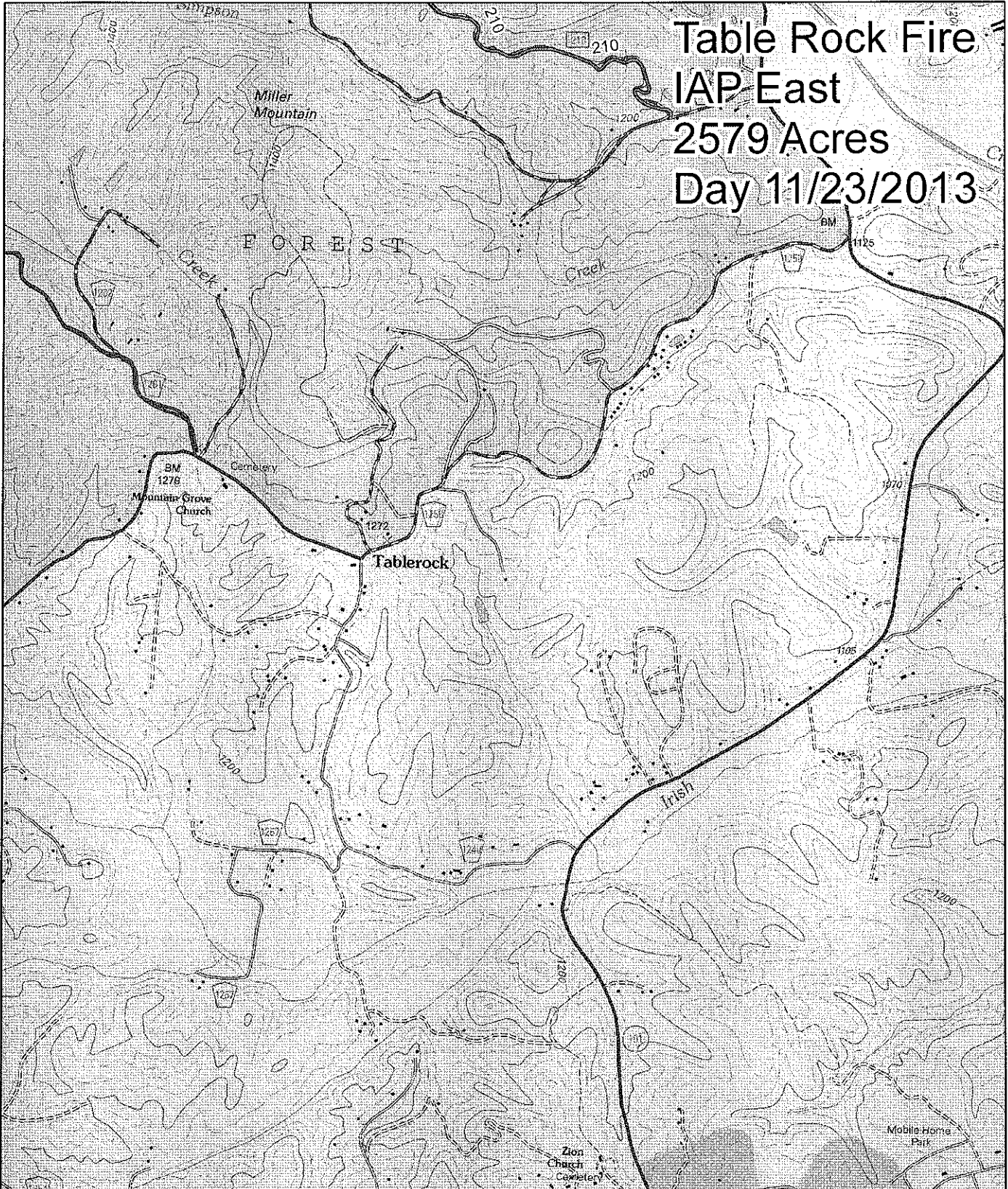


**Legend** 1:24,000

|  |                      |  |                                  |
|--|----------------------|--|----------------------------------|
|  | Containment          |  | Wilderness                       |
|  | Perimeter 11/21/2013 |  | Private Land                     |
|  | Dozer                |  | WRC Roads- Linville River Tract  |
|  |                      |  | Linville River WRC Burn_03152008 |
|  |                      |  | WRC-Linville River Tract         |



# Table Rock Fire IAP East 2579 Acres Day 11/23/2013

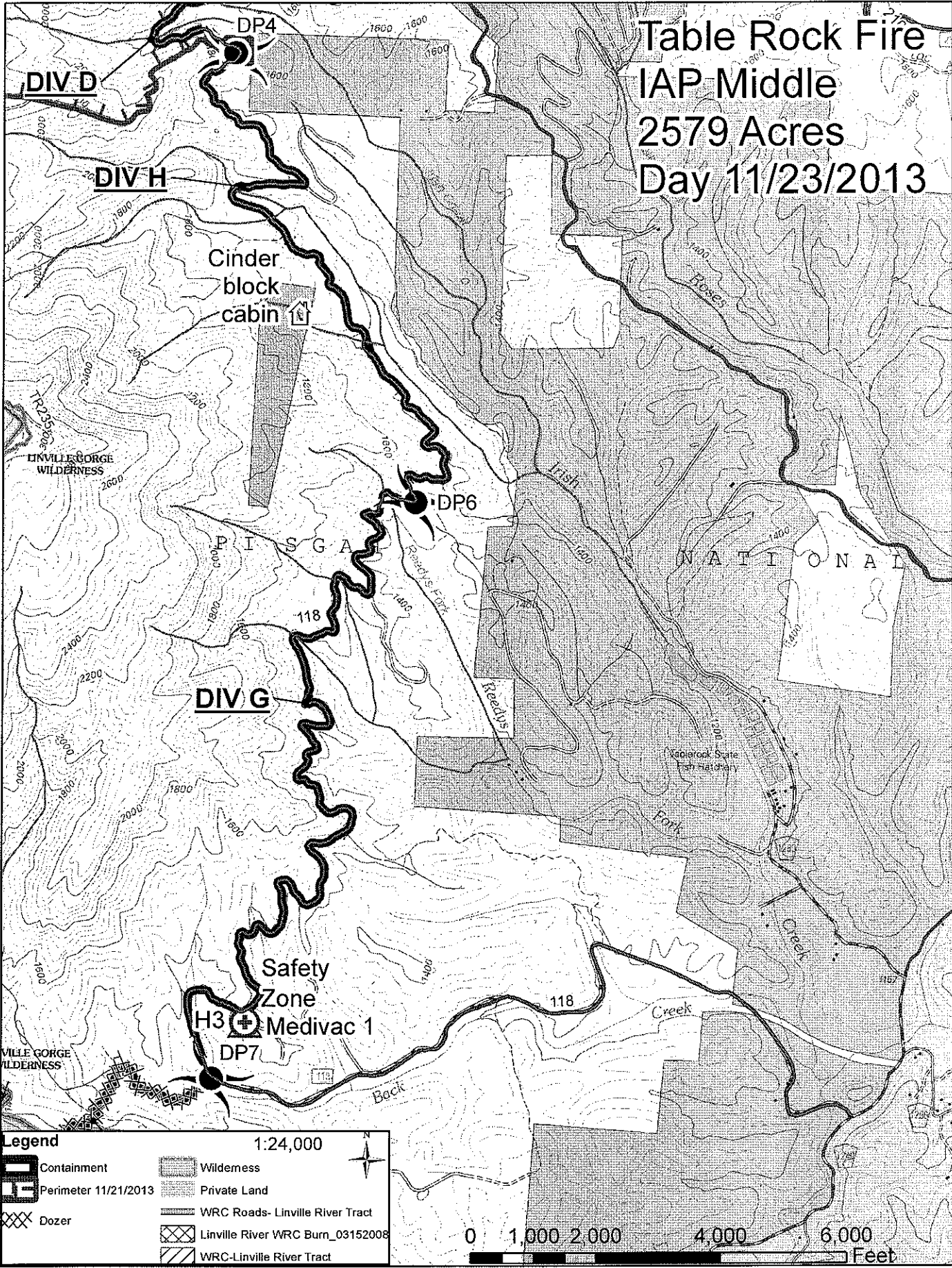


**Legend** 1:24,000

|  |                      |  |                                  |
|--|----------------------|--|----------------------------------|
|  | Containment          |  | Wilderness                       |
|  | Perimeter 11/21/2013 |  | Private Land                     |
|  | Dozer                |  | WRC Roads- Linville River Tract  |
|  |                      |  | Linville River WRC Burn_03152008 |
|  |                      |  | WRC-Linville River Tract         |

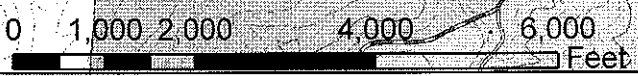


# Table Rock Fire IAP Middle 2579 Acres Day 11/23/2013



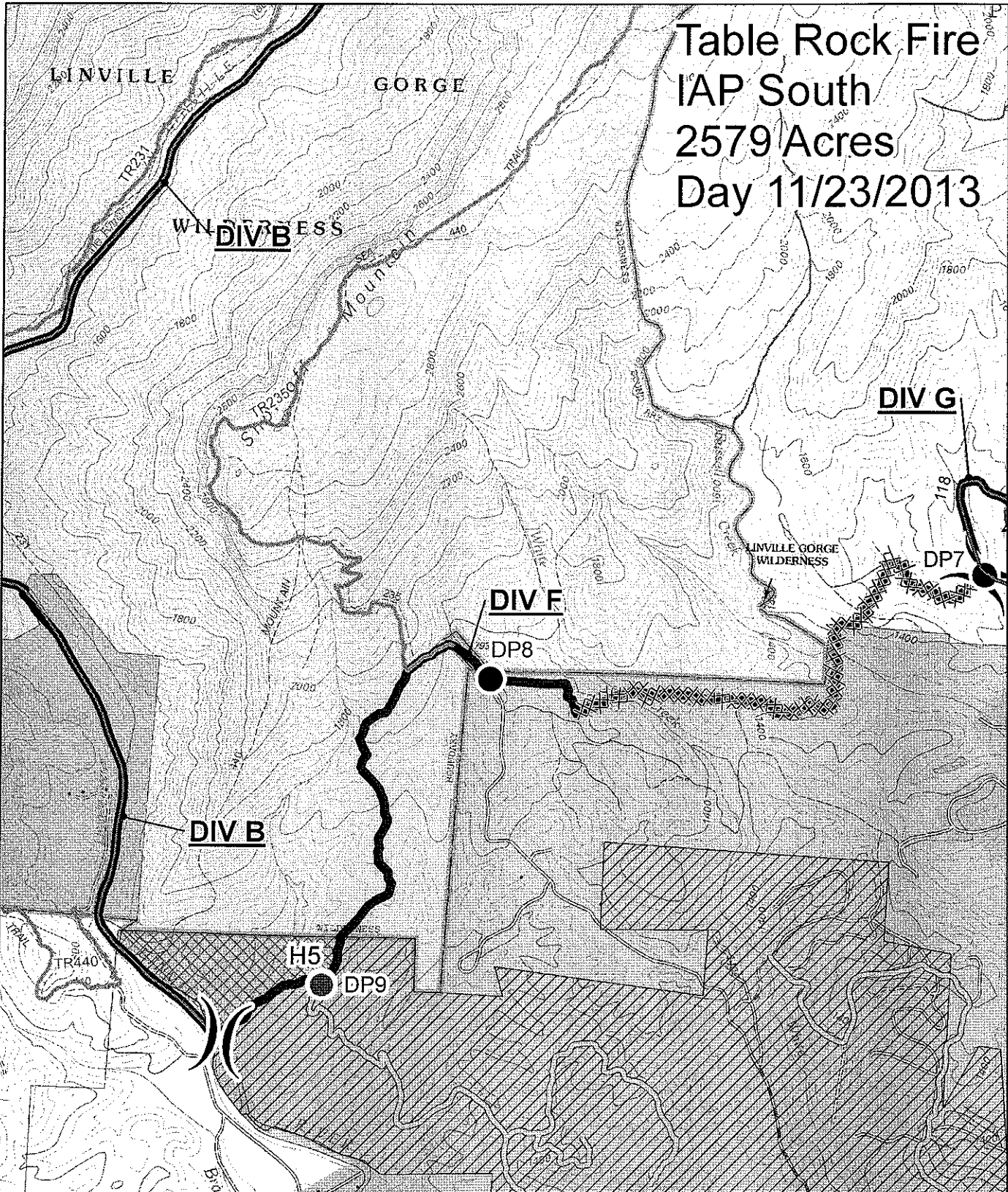
**Legend** 1:24,000

|  |                      |  |                                  |
|--|----------------------|--|----------------------------------|
|  | Containment          |  | Wilderness                       |
|  | Perimeter 11/21/2013 |  | Private Land                     |
|  | Dozer                |  | WRC Roads- Linville River Tract  |
|  |                      |  | Linville River WRC Burn_03152008 |
|  |                      |  | WRC-Linville River Tract         |





# Table Rock Fire IAP South 2579 Acres Day 11/23/2013



**Legend** 1:24,000

|  |                      |  |                                  |
|--|----------------------|--|----------------------------------|
|  | Containment          |  | Wilderness                       |
|  | Perimeter 11/21/2013 |  | Private Land                     |
|  | Dozer                |  | WRC Roads- Linville River Tract  |
|  |                      |  | Linville River WRC Burn_03152008 |
|  |                      |  | WRC-Linville River Tract         |

0 1,000 2,000 4,000 8,000 Feet



# UNIT LOG

1. Incident Name

2. Date Prepared

3. Time Prepared

4. Unit Name/Designators

5. Unit Leader (Name and Position)

6. Operational Period

7. Personnel Roster Assigned

Name

ICS Position

Home Base

8. Activity Log

Time

Major Events

9. Prepared By: