

TABLE ROCK

NC-NCF-130066

P8H0Q5 (0811)

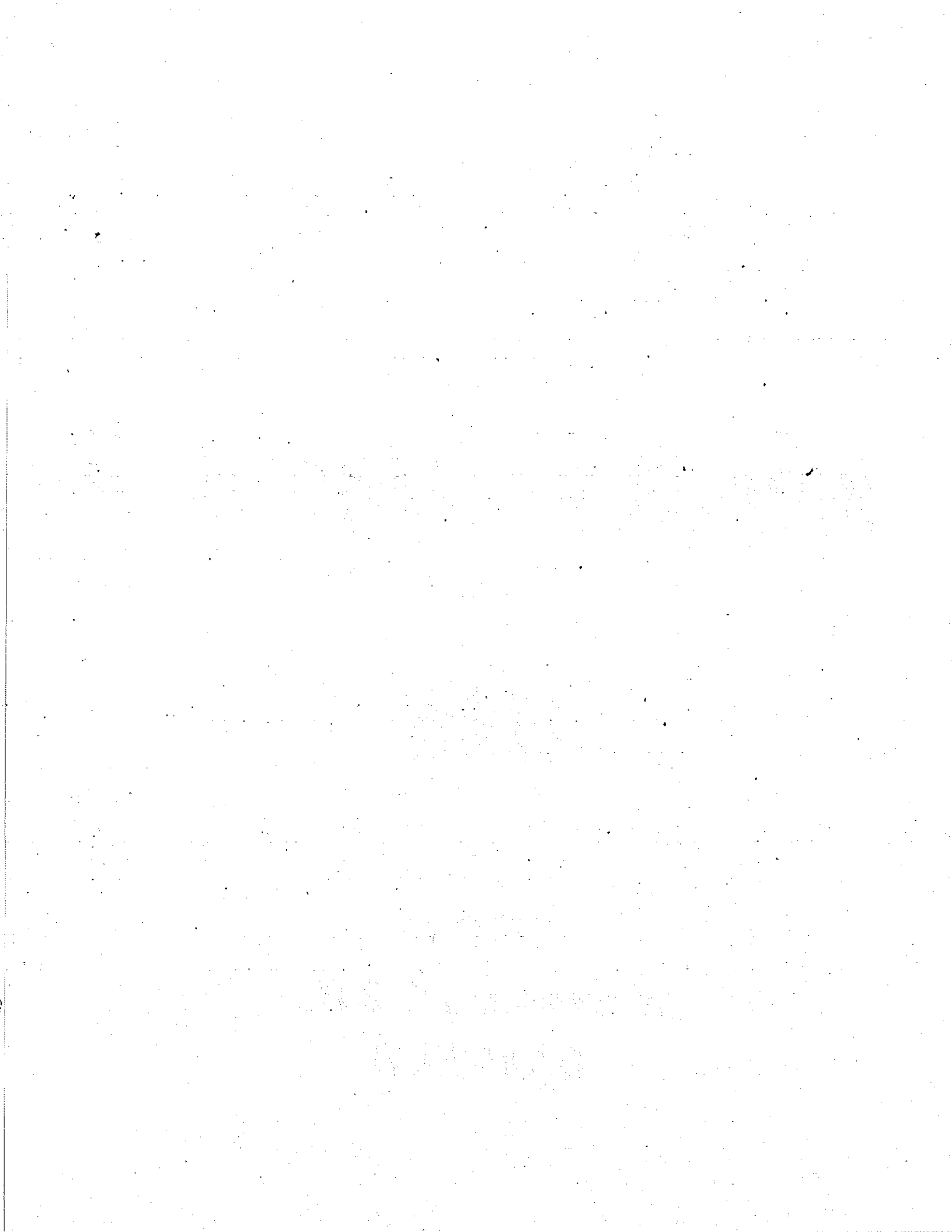
INCIDENT ACTION PLAN



Friday

November 15, 2013

0700-1900



INCIDENT OBJECTIVES	1. Incident Name Table Rock	2. Date Prepared 11/14/13	3. Time Prepared 1900
4. Operational Period Friday, November 15, 0700 - 1900			
5. General Control Objectives For The Incident (Include Alternatives) <ul style="list-style-type: none"> 1. Provide for the highest level of firefighter and public safety by: <ul style="list-style-type: none"> ➤ Implementation of LCES, and review of the Standard Fire Orders and 18 Situations. ➤ Provide an environment where all employees are respected. 2. Provide protection of the Outward Bound Base Camp. 3. Minimize environmental or cultural concerns related to operational activities by utilizing M.I.S.T. guidelines. 4. Keep abreast of, and communicate, changing weather and fire behavior conditions. 5. Manage the incident in the most efficient and cost effective manner that is commensurate with values at risk. 6. Keep the fire East of Linville River, South of Spence Ridge Trail (233), West of FS 210/210B/99; North of Chimney Branch 			
6. Weather Forecast For Period See Attached Fire/Weather Forecast.			
7. General Safety Message See Attached Safety Message.			
8. ATTACHMENTS (X IF ATTACHED) <ul style="list-style-type: none"> <input checked="" type="checkbox"/> Organization List - ICS 203 <input checked="" type="checkbox"/> Medical Plan - ICS 206 <input checked="" type="checkbox"/> Safety Message <input checked="" type="checkbox"/> Division Assignment Lists - ICS 204 <input checked="" type="checkbox"/> Vicinity Map <input checked="" type="checkbox"/> Fire Weather <input checked="" type="checkbox"/> Communications Plan - ICS 205 <input checked="" type="checkbox"/> Incident Map <input checked="" type="checkbox"/> Air Operations Summary – ICS 220 			
9. Prepared By (Planning Section Chief) Dan Belanger	10. Approved By (Incident Commander) Bill Champion		

ORGANIZATION ASSIGNMENT LIST		9. Operations Section		
1. Incident Name Table Rock Fire		Chief	Brian Browning	
		Planning/Ops	Terry Eller	
		a.		
2. Date 11/14/2013	3. Time 2000	Branch Director		
		Deputy		
4. Operational Period Friday, November 15, 2013, 0700-1900		Division/Group	A	Shane Paxton
		Division/Group	B	Shane Paxton
5. Incident Commander and Staff		Division/Group	C	Chase Frisbee
Incident Commander	Bill Champion	Division/Group	D	Kelly Cagle
Deputy IC	Steve Little	Division/Group	E	David Nelson
Safety Officer	.David McFee, Keith Jenkins	Division/Group		
Information Officer	Deborah Walker			
6. Agency Representatives		Division/Group	IA	Greg Phillip
Agency	Name	Division/Group		
Acting District Ranger	Greg Phillip	Division/Group		
Agency Administrator	Derek Ibarguen	Division/Group		
Resource Advisor	Debbie Thomas	Division/Group		
Forest FMO	Riva Duncan	c.		
District FMO	Brian Browning	Branch Director		
7. Planning Section		Deputy		
Chief	Dan Belanger	Division/Group		
Deputy		Division/Group		
Resources Unit		Division/Group		
GIS	Eric Pullium	Division/Group		
Documentation Unit		Division/Group		
Demobilization Unit		d. Air Operations Branch		
Check-In	Michael Williams	Air Operations		
Human Resources		Air Attack Supervisor		
		Helibase Manager		Wes Bently
FBAN	Andrew Baker	Helicopter Manager		Hans Egholm
Technical Specialist		Helicopter Manager		Shawn Parker (t)
Technical Specialist		10. Finance Section		
Technical Specialist		Chief		Bonnie Amaral
8. Logistics Section		Deputy		Cathy King
Chief	Jim Mayo	Time Unit		Kerri Lyda-Taylor
Deputy		Procurement Unit		
Receiving & Distribution Mngr		Compensation/Claims Unit		
Facilities Unit	Rodney Snedecker	PA 10		Mike Walker
Ground Support Unit	Jerry Murphy			
Communications Unit		Prepared by (Resource Unit Leader)		
Medical Unit	Frank Abel	Dan Belanger		
Security Unit				
Ordering Mngr	Dave Smallman			

HEALTH AND SAFETY MESSAGE

SAFETY starts with *YOU*

We are ALL accountable for SAFE behaviors

INCIDENT: Table Rock

DATE: November 15, 2013

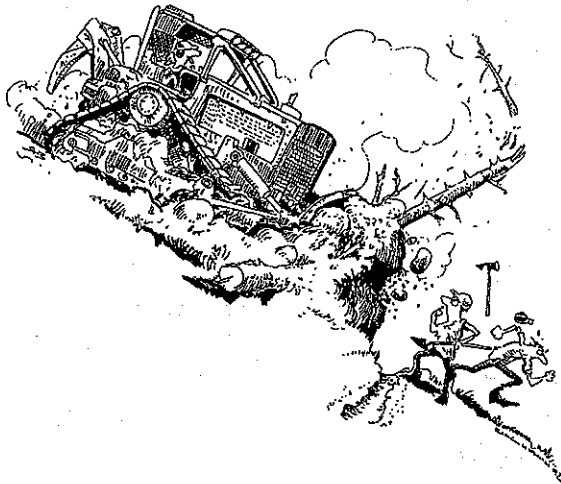
TIME: 0700

Major Hazards and Risks: Air Operations; Burn Out; Structure Protection; Transportation;

Fire Order of the Day – Recognize current weather conditions and obtain forecasts

- * **AIR OPERATIONS** – maintain good communications with other ground units and aircraft in your area. Ground crews must maintain a safe distance (200' in brush or 400' in timber) during retardant drops for not only personal safety, but to allow the pilot an opportunity to do his job in a safe and effective manner. Be aware of non-incident personnel during air-ops, especially if using heavy air tankers. Use air resources as lookouts when appropriate.
- * **BURN OUT OPERATIONS** – evaluate snag potential and address mitigation measures by falling and/or flag until mitigation is addressed. Watch for rolling material and during mop up operation evaluate hazards and safety concerns interior from control line.
- * **STRUCTURAL PROTECTION/HAZARDOUS MATERIALS** – Utilize local fire departments. Review structure watch out situations on pages 11-15 in your Incident Response Pocket Guide. Remain aware of traffic congestion near fires. Identify utility lines, butane tanks and other HAZMAT.
- * **TRANSPORTATION** – When traveling to and from incidents – LIGHTS ON, USE SEATBELTS, & OBEY ALL TRAFFIC RULES. Don't allow fatigue to control your vehicle. Share driving responsibilities between licensed operators. Watch out for wildlife and pedestrians. As you leave the ICP, watch out for increased traffic. You may encounter smoke and areas being evacuated.....**DRIVE DEFENSIVELY!!**

Watch Out Situation of the Day



5. UNINFORMED ON STRATEGY, TACTICS AND HAZARDS

Look Up, Look Down, Look Around

- * **Fuel Characteristics** – Assess prior to beginning operations.
- * **Fuel Moisture** – Read daily shift plan and assess on site.
- * **Fuel Temperature** – Varies with exposure to direct sunlight.
- * **Terrain & Fuel Accumulations** – Scout prior to beginning operations and continuously during operations.
- * **Wind** – Measure, observe, feel and notice changes.
- * **Atmospheric Stability** – Observe.
- * **Fire Behavior** – Monitor constantly prior to and during operations.
- * **Safety** – Ask questions in unfamiliar situations. The only dumb question is the one you did not ask.

Incident Safety Officers: David McFee, Mickey Bunton

INCIDENT WITHIN AN INCIDENT EMERGENCY ACTION PLAN

Introduction

An emergency such as a helicopter accident, firefighter entrapment or burnover, camp evacuations, vehicle accident, medical emergency or other unknown emergency condition could occur on any of the wild fires or all-risk incidents we may be assigned. This may result in serious injuries or fatalities, and periods of extreme stress. This is called an "incident within an incident (IWI)."

Assignments may be in remote or severely impacted locations that result in longer than normal response times for local emergency response personnel; therefore, the team is responsible for handling the situation professionally, timely and effectively.

The intent of this plan is to establish a process and protocol to effectively manage an emergency situation (IWI) while continuing to manage the primary incident with as minimum of distraction as possible.

General Procedures

In the event of an emergency IWI, notification will be made thru the chain of command to the Operations Section Chief and/or Safety Officer. The Operations Section Chief (OSC) will assume control of the emergency and promptly assign on-scene responsibility to an appropriate Division/Group Supervisor. There will be an IWI IC identified and communicated to all personnel on each division. These individuals will be identified in the incident action plan. If OSC cannot be contacted, the highest qualified operations person or safety officer on scene will assume command of the emergency and take appropriate action.

The Incident Commander and Safety Officer will be notified promptly. The IC will ensure that all remaining command and general staff are notified.

All incident personnel will be instructed by the OSC or Safety Officer to clear the designated radio channel for "emergency traffic" related only to the emergency situation. If OSC or Safety Officer cannot be contacted, the highest qualified person on scene will broadcast "emergency radio traffic." In the event personnel are injured, when they have been loaded and being transported to the hospital or at an appropriate time, OSC or Safety Officer will announce on the radio that "emergency radio traffic" has been canceled and frequency cleared for standard incident communication.

Names of the injured or deceased individuals will not be transmitted on the radio.

To aid in an investigation, deceased individuals or their personal effects will not be moved except to accomplish rescue work or to protect the health and safety of others. The accident scene should be properly identified and protected.

Those directly involved will provide written documentation of their actions. An ICS 214 may be utilized for the initial documentation, but a subsequent narrative will be required.

An After Action Review will be conducted after each emergency incident within an incident to determine strengths and needed improvements.

Functional Assignments

When an emergency situation occurs, all Command & General Staff should quickly assess the situation. The following tasks should be accomplished as appropriate.

Incident Commander (IC)

1. Ensures implementation and accountability of the Incident within an Incident Emergency Action Plan.
2. Notifies the Agency Administrator and Geographic Coordination Center as needed.
3. Approves release of all information regarding the emergency.
4. Determines the need for a Serious Accident Investigation Team (SAIT), if it is a fatality or entrapment on an USFS incident, USDA OIG must be notified by Agency Administrator, and will be the lead on this type of investigation.
5. Determines the need for a Critical Incident Stress Debriefing Team (CISD Team). The request will be routed through the Agency Administrator.
6. Determines which outside authorities need be contacted and initiates contact.
7. In the event a public evacuation is needed, the IC will inform the county sheriff and other officials as needed.

Safety Officer (SOF)

1. Coordinates with and supports the Division/Group Supervisor or person in charge at the scene of the emergency.
2. Initiates investigation and makes recommendation for additional investigation teams as needed.
3. Secures witnesses names and initial statements.
4. Obtains sketches and photos of emergency scene.
5. Obtains assistance from incident Law Enforcement in conducting the initial investigation.
6. Establishes contact with the local Emergency Operation Center prior to an emergency to provide the center with a copy of the Emergency Action Plan and to arrange for a communication link.
7. Completes the wild fire entrapment/fatality initial report (NFES 0859) as needed.

Information Officer (PIO)

1. Prepares and coordinates the release of information in accordance with agency policy and the direction and approval of the IC and Agency Administrator.
2. Provides photographic and video equipment and operators to assist with the investigation as requested.
3. Arranges briefings for incident personnel.

Operation Section Chief (OSC)

1. Implements the Incident Emergency Plan. Supervises the Division/Group Supervisor or person assigned to manage on-scene responsibility of the emergency incident.
2. Identifies nature of incident, number of people involved and their medical condition, location of emergency, and need for transportation and special needs (law enforcement, haz mat, etc).
3. Coordinates air operations as needed.
4. Ensures appropriate IWI organization is put in place to manage the emergency.

Logistics Section Chief (LSC)

1. Orders needed resources for the emergency as requested.
2. Provides ground transportation as needed.
3. Communicates with hospital and ambulance services. Refers to medical plan in place.
4. Coordinates security as necessary to protect accident scene.
5. Arranges for damaged vehicle removal as needed.
6. Provides EMT's to stabilize patients and to accompany injured to hospital.
7. Supervises camp evacuation as needed and ensures evacuation is done calmly and safely.
8. Provides law enforcement officers to assist the Safety Officer with investigation.
9. Provides emergency meal, potable water and supplies to personnel at the emergency site.
10. Communications will monitor the radio and ensure radio channel remain open for emergency communications only.
11. If a fatality has occurred, contacts the county coroner and sheriff's office.
12. Develops camp evacuation plan in advance of an emergency in conjunction with the Safety Officer and LSC.
13. Law Enforcement will :
 - a. Document all post incident activities
 - b. Locate and secure personal effects of injured personnel.

Planning Section Chief (PSC)

1. Develops camp evacuation plan in advance of an emergency in conjunction with the Safety Officer and LSC.
2. Provides resource information, maps and other data as requested and maintains documentation.

Finance Section Chief (FSC)

1. Coordinates with agency administrative staff.
2. Coordinates Compensation/Claims Unit response.

North Carolina Incident Management Team

DIVISION ASSIGNMENT LIST		1. Branch		2. Division/Group C			
3. Incident Name Table Rock		4. Operational Period Date: 11/15/2013 Time: 0700					
5. Operations Personnel							
ICT3	Bill Champion	Division Supervisors		Chase Frisbee			
Operations Chief	Browning/Eller	Safety Officers		David McFee			
6. Resources Assigned This Period							
Strike Team/Task Force/ Resource Designator	Leader	Demob Date	Number Persons	Trans Needed	Drop Off PT/Time	Pick Up PT/Time	
Pat-Rick Type 2 IA	C. McLaughlan		20		0700	1900	
Dozer D&D Motors T3	S.Young		2		0700	1900	
HEQB (t)	F. Sutton		1		0700	1900	
Cherokee IHC	D.Trentham		10		0700	1900	
Savannah River T6 Eng #E3	K. Aiken		+2		0700	1900	
CS/NWR T6 Eng #E262	D.Odegard		+2		0700	1900	
7. Control Operations							
<ul style="list-style-type: none"> • Burn out and hold along dozer line from DP5 to Div. C/D Break. • Fire and Hold line west of Chimney Gap, as needed. • Utilize bucket drop to check fire spread in Chimney Branch drainage. 							
8. Special Instructions							
<ul style="list-style-type: none"> • Identify Fallers within the Division. • M.I.S.T. tactics, as appropriate • Maintain LCES • Medical emergencies need to contact Division Sup. And follow Medical Plan, as appropriate. • Each Division will identify an "Incident within an Incident" IC for that Division being "_____" 							
Function	Frequency	System	Channel	Function	Frequency	System	Channel
TAC 3	168.600		3				
Air to Ground	164.150		9				
Prepared By (Resource Unit Leader)		Approved By (Planning Sect. Ch.)		Date		Time	
Dan Belanger		Dan Belanger		11/14/13		2200	

ICS 204

NFES 1328

DIVISION ASSIGNMENT LIST				1. Branch		2. Division/Group I.A.	
3. Incident Name Table Rock				4. Operational Period Date: 11/15/2013 Time: 0700			
5. Operations Personnel							
ICT3		Bill Champion		Division Supervisors		Greg Phillip	
Operations Chief		Browning/Eller		Safety Officers		David McFee	
6. Resources Assigned This Period							
Strike Team/Task Force/ Resource Designator	Leader	Demob Date	Number Persons	Trans Needed	Drop Off PT/Time	Pick Up PT/Time	
Engine T-6	TBD		3		0700	1900	
Engine T6 #112	J.Boone		3				
Dozer NX5	J. Bishop		1		Stage @ DP2		
7. Control Operations							
<ul style="list-style-type: none"> Provide I.A. support to the Grandfather R.D., as requested. 							
8. Special Instructions							
<ul style="list-style-type: none"> NX5 will be assisting/working in Division D, as needed Identify Fallers within the Division. Maintain LCES Medical emergencies need to contact Division Sup. And follow Medical Plan, as appropriate. If bucket work is needed, make request through the Div. Sup. Each Division will identify an "Incident within an Incident" IC for that Division being " _____ " 							
Function	Frequency	System	Channel	Function	Frequency	System	Channel
Initial Attack	169.900		11				
Air to Ground	164.150		9				
Prepared By (Resource Unit Leader)			Approved By (Planning Sect. Ch.)		Date		Time
Dan Belanger			Dan Belanger		11/14/13		2100

AIR OPERATIONS SUMMARY

Prepared By: Dan Belanger

Prepared Date: 11/14/13

Prepared Time: 2000

1. NAME: Catawba Helibase	2. OPS PERIOD DATE: Thursday, Nov. 14, 2013	START TIME: 0800	END TIME: 1900	SUNRISE: 0706	SUNSET: 1724
3. REMARKS (Safety Notes, Hazards, Air Operations Special Equipment, etc.): TFR is established over the Incident Mission Request thru DIVS to OPS			4. READY ALERT AIRCRAFT MEDIVAC or IA- Either depending availability		
			5. TFR 3-9717 5500 AGL		

6. PERSONNEL	NAME	PHONE #	7. FREQUENCIES	AM	FM	8. FIXED-WING- Type/ Make-Model/ N#/ Base
AOBD			AIR/ AIR FW			AIRTANKERS-
ASGS			AIR/ AIR RW- FF		122.92	LEAD PLANES-
ATGS			AIR/ GROUND		164.150 TXRX	
ATGS			COMMAND			
HILCO						
HEB2	Wes Bently	864-888-7553	DECK		163.100	
HEB1-T			TOLC		N/A	
						OTHER FW AIRCRAFT-

9. HELICOPTERS (Use Additional Sheets as Necessary)

FAA N#	TY	MAKE/ MODEL	BASE	AVAIL	START	Managers	FAA N#	T Y	MAKE/ MODEL	BASE	AVAIL	START	REMARKS
3HA	III		ICP-field	0800	0800	Shawn Parker							706-490-2000
8HX	II		ICP-field	0800	0800	Hans Egholm							585-278-4206

10. TASK/ MISSION/ ASSIGNMENT (Type/ function includes: Air Tactical, Retardant, Recon, Personnel Transport, Bucket Operations, SAR, etc.)

TYPE/FUNCTION	NAME OF PERSONNEL OR CARGO (if applicable) or instructions for tactical aircraft	MISSION START	FLY FROM	FLY TO
		0800		
		0800		Initial Attack

FIRE BEHAVIOR FORECAST

FORECAST NUMBER: 2	TYPE OF FIRE: Wildfire
FIRE NAME: Table Rock	OPERATIONAL PERIOD: 11/15/13
DATE ISSUED: November 14th, 2013	TIME ISSUED: 2000
UNIT: NC-NCF	SIGNED: /s/ Andy Baker / Andy Baker FBAN

INPUTS

WEATHER SUMMARY:

****Southwest flow will result in increasing RH recovery ****

Today: Partly sunny skies. Max Temp: 54 degrees Min RH: 40%
Winds: Southwest 5 to 7 mph becoming South
Mixing Ht: 100-200 ft. AGL in the morning...increasing to near 3000 ft. AGL in the afternoon
Transport Winds: SW 8 to 14 mph
Smoke Dispersion: Generally poor in the morning increasing to fair in the afternoon

Tonight: Mostly cloudy with slight chance of rain (<0.1 inch). Low Temp: 41 degrees Max RH: 100%
Winds: Calm

Saturday: Mostly Cloudy. Max Temp: 60 degrees Min RH: 71% Winds: Southeast at 3-5 mph

OUTPUTS

FIRE BEHAVIOR

GENERAL:

- In Fuel Model 9 (hardwood litter) expect forward rates of spread around 6 chains/hour and flame lengths of 2-3 feet. For backing fire expect around 1-2 ch/hr ROS with 1-2 foot flame lengths.
- In Fuel Model 5 and 11 (historically fire scarred areas) forward rates of spread will vary from 20-40 chains/hour depending on the continuity of fuels on upslope runs. Flame lengths should range from 3 to 6 feet in shrub fuels and/or downed woody slash.
- Spotting distance – up to 0.1 mile Probability of Ignition from a Firebrand – 40%

SPECIFIC:

Division A: stay vigilant for slopover potential north of Spence Ridge Trail given two straight days of southwesterly flow/pressure on this fireline.

Division B/C: watch for snags catching up as the fire continues to back down to the Linville River and Chimney Branch. Upslope runs are certainly possible in the afternoon as the fire hooks around and under the rock bluffs due west of "The Chimneys".

Division D: be prepared for any upslope runs that could occur as the fire continues to back into the Irish Creek drainage in the afternoon.

Division E: watch for any remaining pockets of unburned fuels that could impact the Upward Bounds Camp in the afternoon.

AIR OPERATIONS:

- Expect inversion to lift by early morning (0800-0900)
- Afternoon mixing heights around 3000 feet AGL.

SAFETY

- Forecasted Fire Danger Ratings (from North Cove Pinnacle RAWS):
ERC – 46 (95th percentile) BI – 34 (90th percentile)

INCIDENT RADIO COMMUNICATIONS PLAN

1. Incident Name
Table Rock

2. Date/Time Prepared
11/14/13 1800

3. Operational Period Date/Time
11/15/13 0700-1900

4. BASIC RADIO CHANNEL UTILIZATION

Radio Type/Cache	Channel	Function	Frequency/Tone	Wide/Narrow	Assignment	Remarks
King NIFC	Ch 1	Tac 1	Rx/Tx 170.000	N	Division A	
King NIFC	CH 2	Tac 2	Rx/Tx 166.675	N	Division B	
King NIFC	CH 3	Tac 3	Rx/Tx 168.600	N	Division C	
King NIFC	CH 4	Tac 4	Rx/Tx 168.050	N	Division D	
King NIFC	CH 5	Tac 5	Rx/Tx 168.200	N	Division E	
King NIFC	CH 6	Clingman Repeater	Rx 168.725 Tone 103.5 Tx 172.225 Tone 136.5	N	Command	
King NIFC	CH 7	High Peak Repeater	Rx 168.725 Tone 103.5 Tx 172.225 Tone 103.5	N	Command	
King NIFC	CH 8	Grandmother Repeater	Rx 168.725 Tone 103.5 Tx 172.225 Tone 146.2	N	Command	
King NIFC	CH 9	Air to Ground 1	Rx/Tx 164.150	N	Primary	
King NIFC	CH 10	Air to Ground 2	Rx/Tx 167.425	N	Secondary	
King NIFC	CH 11	Initial Attack	Rx/Tx 169.900	N	IA	
King NIFC	Ch 12	Open		N		
King NIFC	Ch 13/16	Open		N		

5. Prepared By (Communications Unit)
David Smallman 828-778-2076

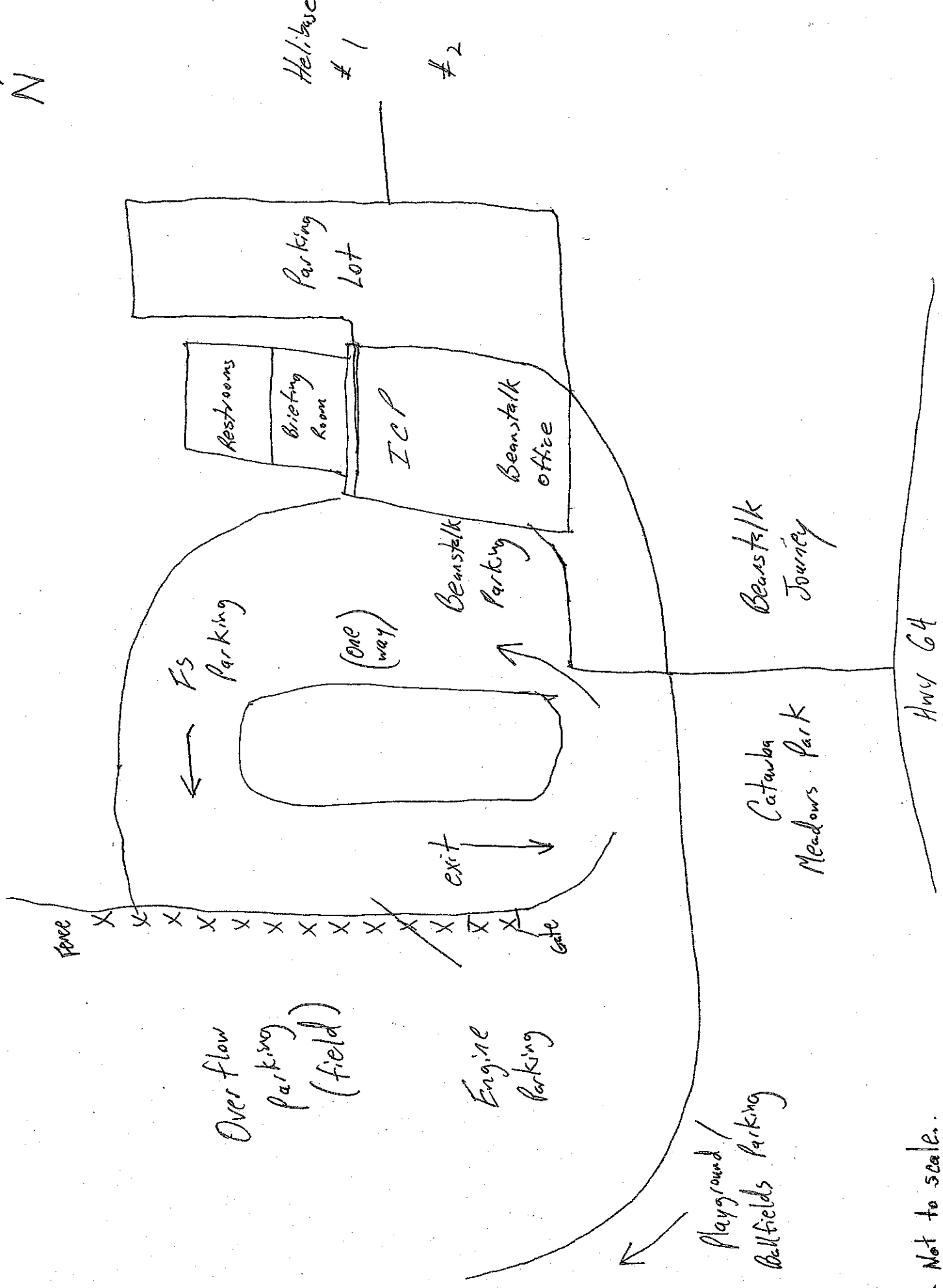
ICS 205

NFS 1330

Table Rock Fire Cell Phone Numbers

<u>Name</u>	<u>Position</u>	<u>Number</u>
Champion, Bill	IC	828-360-4818
Amaral, Bonnie	FSC2	828-779-2067
Baker, Andy	FBAN	706-400-2150
Belanger, Dan	RESL	828-231-1529
Bracy, Darlene	DRVR	828-460-3181
Browning, Brian	Operations	828-200-0102
Cagle, Kelly	DIVS	336-302-0343
Eller, Terry	Planning Ops	828-779-2081
Gay, Charlie	GSUL	828-273-2674
Ibarguen, Derrick	AADM	828-421-4844
King, Cathy	COST	828-284-0819
Little, Steve	IC (t)	828-778-2077
Lyda-Taylor, Kerri	PTRC	828-776-5989
Mayo, Jim	LOGC	828-712-7762
McFee, Dave	SOFR	828-208-9930
Pullium, Eric	GIST	828-644-8966
Rhea, Rusty	HEBM	828-273-4322
Roberts, John	PROC	828-337-9127
Roper, James	RCDM(t)	828-208-3782
Smallman, Dave	ORDM	828-778-2076
Smith, CW	DRVR	828-442-1389
Snedeker, Rodney	FACL	828-216-2322
Walker, Deborah	PIO	910-975-0803
Walker, Mike	PA50	828-337-1312
Williams, Mike	SCKN	828-835-0094
ICP FAX		828-438-5287

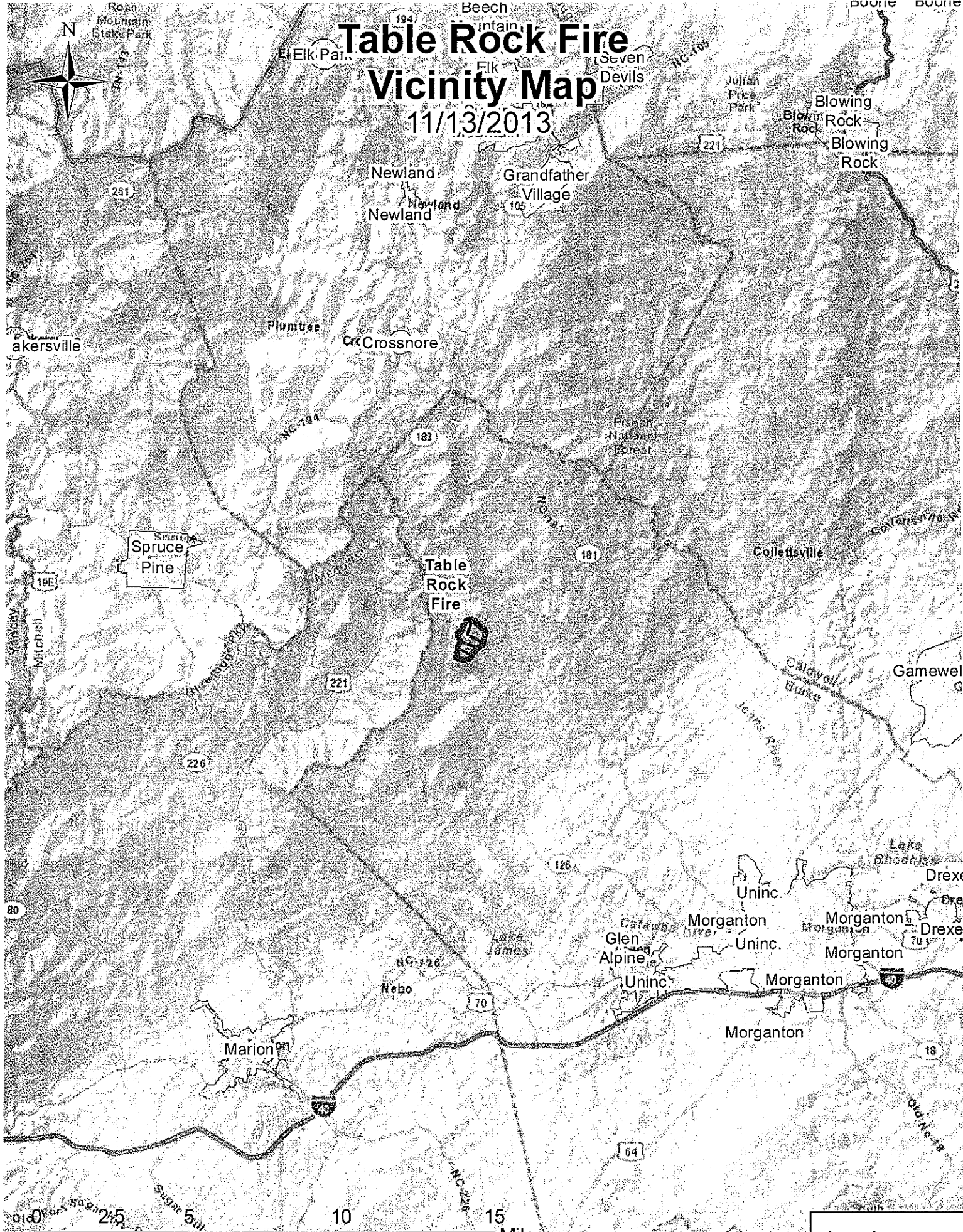
ICF Traffic Pattern



x Not to scale.

Table Rock Fire Vicinity Map

11/13/2013



Legend

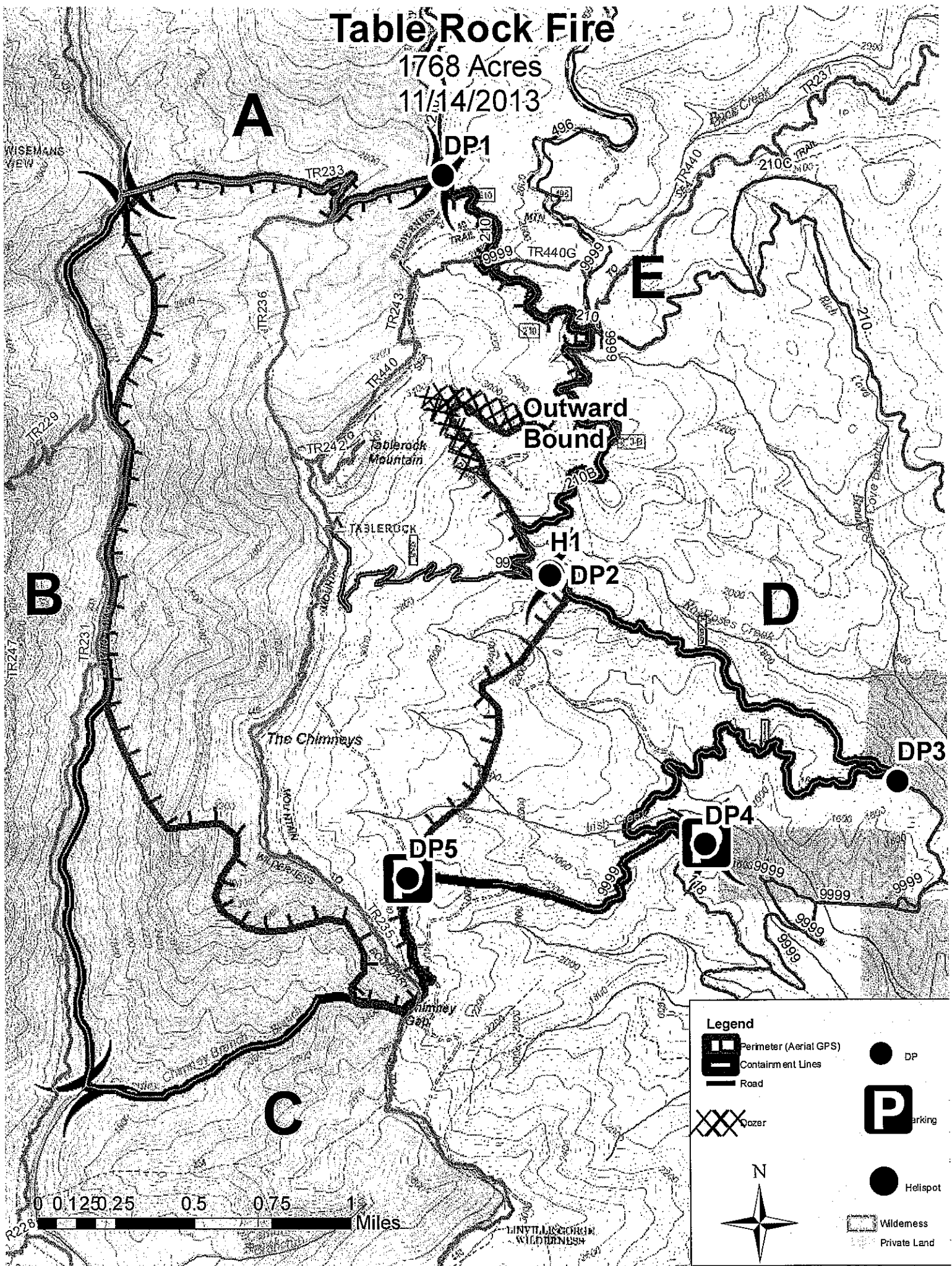
-  Table Rock Perimeter

Sources: Esri, DeLorme, NAVTEQ, USGS, Intermap, IP METI, Esri China (Hong Kong), Esri (Thailand), TomTom

Table Rock Fire

1768 Acres

11/14/2013



A

E

B

D

C

DP1

DP2

DP3

DP4

DP5

Outward Bound

H1

Legend

- Perimeter (Aerial GPS)
- Containment Lines
- Road
- Dozer
- DP
- Parking
- Helispot
- Wilderness
- Private Land

0 0.125 0.25 0.5 0.75 1 Miles



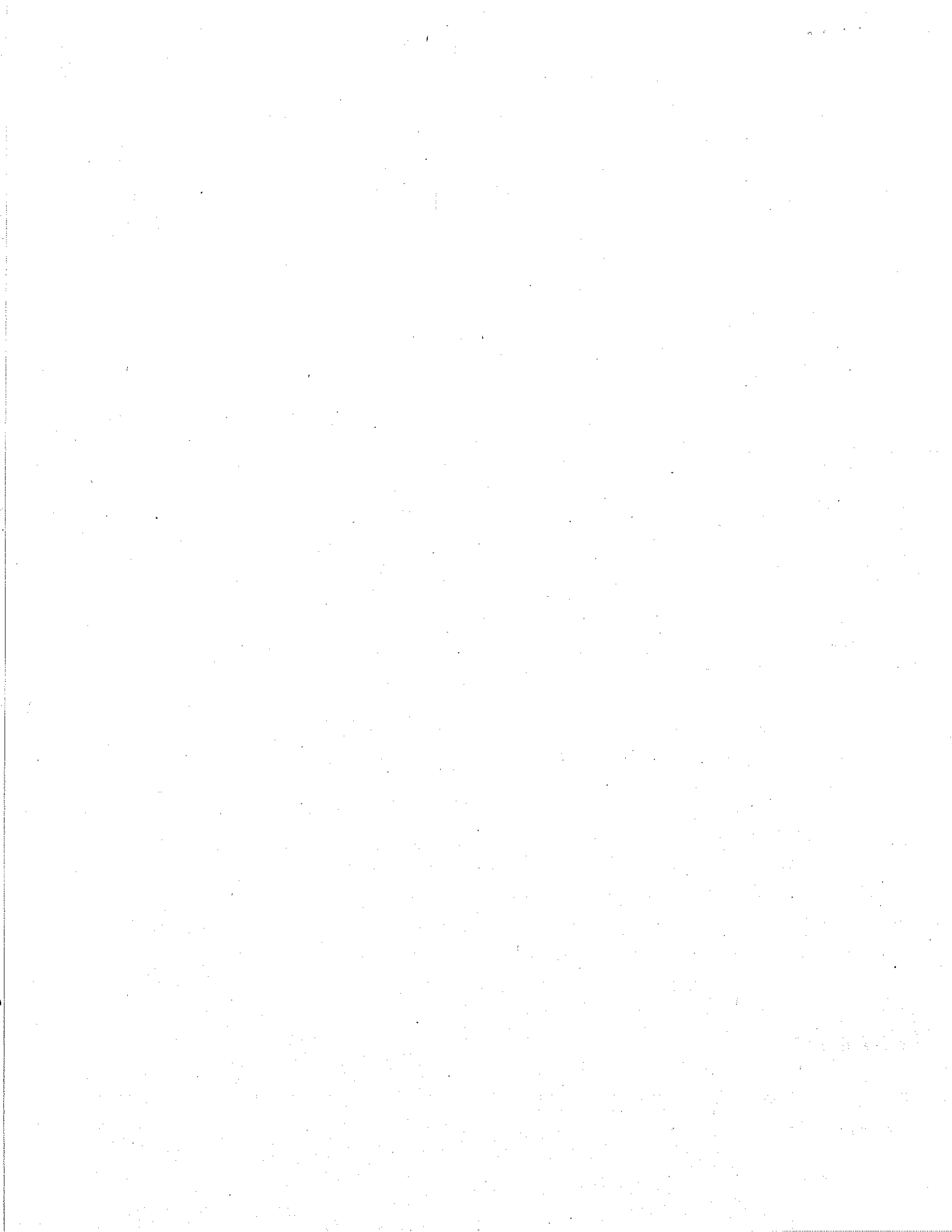


TABLE ROCK

NC-NCF-130066

P8H0Q5 (0811)

INCIDENT ACTION PLAN



Friday

November 15, 2013

0700-1900