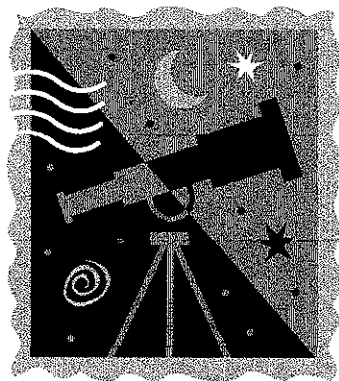


TABLE ROCK

NC-NCF-130066

PSHQ05 (0811)

INCIDENT ACTION PLAN

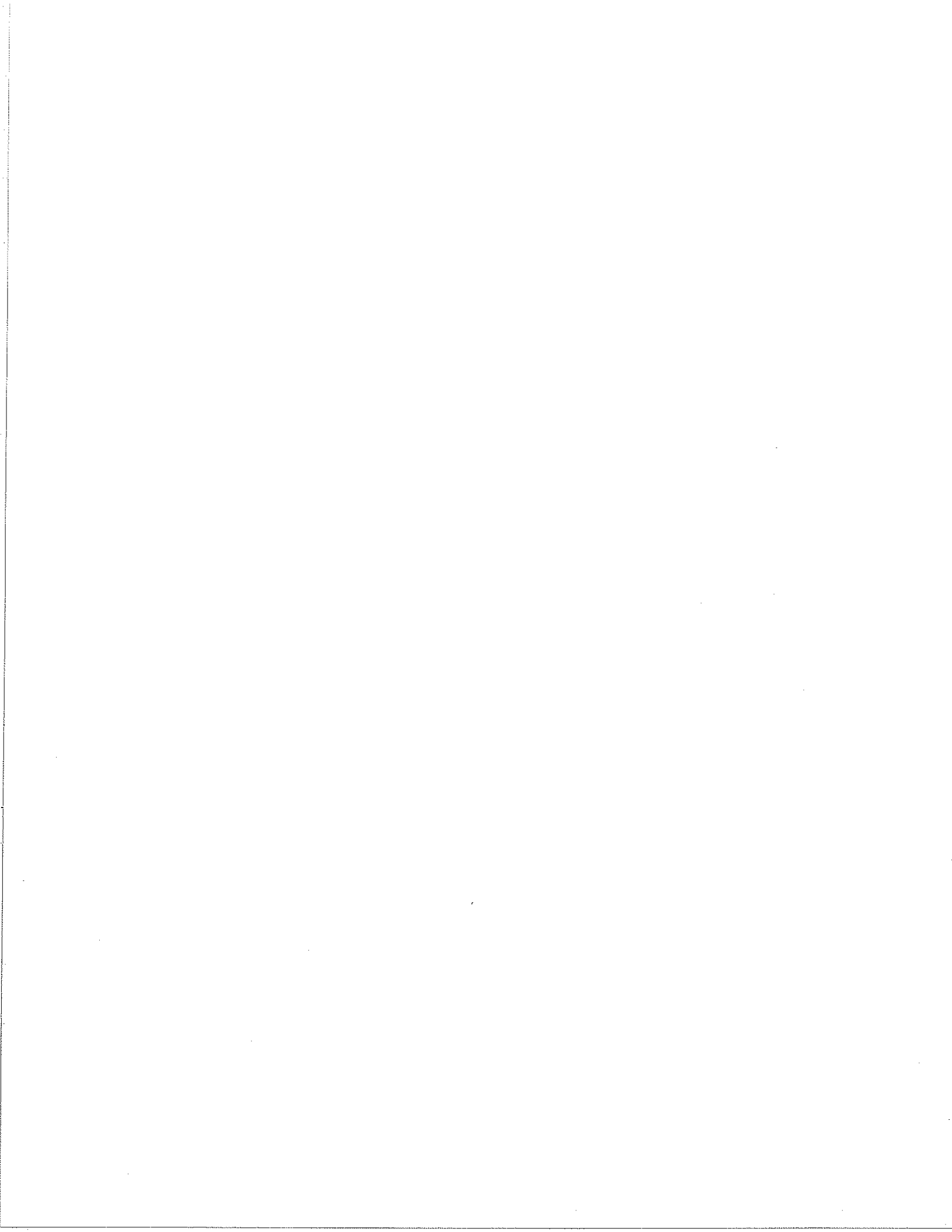


NIGHT SHIFT

Friday

November 15, 2013

2000 - 0800



INCIDENT OBJECTIVES	1. Incident Name	2. Date Prepared	3. Time Prepared
	Table Rock	11/15/13	1300
4. Operational Period Friday, November 15, 2000 - 0800			
5. General Control Objectives For The Incident (Include Alternatives)			
<p>1. Provide for the highest level of firefighter and public safety by:</p> <ul style="list-style-type: none"> ➤ Implementation of LCES, and review of the Standard Fire Orders and 18 Situations. ➤ Provide an environment where all employees are respected. <p>2. Provide protection of the Outward Bound Base Camp.</p> <p>3. Minimize environmental or cultural concerns related to operational activities by utilizing M.I.S.T. guidelines.</p> <p>4. Keep abreast of, and communicate, changing weather and fire behavior conditions.</p> <p>5. Manage the incident in the most efficient and cost effective manner that is commensurate with values at risk.</p> <p>6. Keep the fire East of Linville River, South of Spence Ridge Trail (233), West of FDR 118; North of Forest Boundary.</p>			
6. Weather Forecast For Period			
See Attached Fire/Weather Forecast.			
7. General Safety Message			
See Attached Safety Message.			
8. ATTACHMENTS (X IF ATTACHED)			
<input checked="" type="checkbox"/> Organization List - ICS 203 <input checked="" type="checkbox"/> Medical Plan - ICS 206 <input checked="" type="checkbox"/> Safety Message <input checked="" type="checkbox"/> Division Assignment Lists - ICS 204 <input checked="" type="checkbox"/> Vicinity Map <input checked="" type="checkbox"/> Fire Weather <input checked="" type="checkbox"/> Communications Plan - ICS 205 <input checked="" type="checkbox"/> Incident Map <input type="checkbox"/> Air Operations Summary - ICS 220			
9. Prepared By (Planning Section Chief)		10. Approved By (Incident Commander)	
Dan Belanger		Bill Champion	

ORGANIZATION ASSIGNMENT LIST		9. Operations Section		
1. Incident Name Table Rock Fire		Chief	Brian Browning	
		Planning/Ops	Terry Eller	
		a.		
2. Date 11/15/2013	3. Time 1300	Branch Director		
		Deputy		
4. Operational Period Friday, November 15, 2013, 2000-0800		Division/Group	A	Shane Paxton
		Division/Group	B	Shane Paxton
5. Incident Commander and Staff		Division/Group	C	Chase Frisbee
Incident Commander	Bill Champion	Division/Group	D	Kelly Cagle
Deputy IC	Steve Little	Division/Group	E	David Nelson
Safety Officer	Mickey Bunton	Division/Group		
Information Officer	Deborah Walker			
6. Agency Representatives		Division/Group	IA	Greg Phillip
Agency	Name	Division/Group		
Acting District Ranger	Greg Phillip	Division/Group		
Agency Administrator	Derek Ibarguen	Division/Group		
Resource Advisor	Debbie Thomas	Division/Group		
Forest FMO	Riva Duncan	c. Night Shift		
District FMO	Brian Browning	Branch Director		
7. Planning Section		Deputy		
Chief	Dan Belanger	Division/Group	Brian Smith	
Deputy		Division/Group		
Resources Unit		Division/Group		
GIS	Eric Pullium	Division/Group		
Documentation Unit		Division/Group		
Demobilization Unit	Dan Belanger	d. Air Operations Branch		
Check-In	Michael Williams	Air Operations		
		Air Attack Supervisor		
		Helibase Manager	Wes Bently	
FBAN	Andrew Baker	Helicopter Manager	Hans Egholm	
Technical Specialist		Helicopter Manager	Shawn Parker (t)	
Technical Specialist		10. Finance Section		
Technical Specialist		Chief	Bonnie Amaral	
8. Logistics Section		Deputy	Cathy King	
Chief	Jim Mayo	Time Unit	Kerri Lyda-Taylor	
Deputy		Procurement Unit		
Receiving & Distribution Mngr		Compensation/Claims Unit		
Facilities Unit	Rodney Snedecker	PA 10	Mike Walker	
Ground Support Unit	Charlie Gay			
Communications Unit	Dave Smallman	Prepared by (Resource Unit Leader) Dan Belanger		
Medical Paramedic	Frank Abel			
Security Unit	Jason Crisp			
Ordering Mngr	Dave Smallman			

HEALTH AND SAFETY MESSAGE

SAFETY starts with YOU

We are ALL accountable for SAFE behaviors

INCIDENT: Table Rock

PERIOD: Night Shift 1900-0700 11/15/13

Fire Order of the Night – *Maintain communications with your forces, your supervisor, and adjoining forces.*

Watch Out Situation – *Instructions and assignments not clear.*

Major Hazards and Risks:

- **Driving** – Drive defensively, keep speed down, and watch for wildlife crossing roads at night. Maintain adequate, safe distance between vehicles and anticipate oncoming traffic. Use spotters when backing up.
- **Hazard trees** – Hazardous trees can be within the fire and green areas. Look Up and Look Around you at all times. Heads up for hazardous trees or snags – warn others around you and insure that any hazard trees are flagged.
- **Fatigue/personal welfare** – Take care of yourself by getting adequate rest and eating properly. It has been a long spring fire season so far and appears we will continue right on into the summer season. Remember to account for long term, cumulative fatigue when planning operations.
- **Complacency** – Stay vigilant and expect the unexpected. It is at this stage of the fire that people will become complacent and let their guard down. Maintain your situational awareness regardless of your assignment.

Remember that night time operations are a tactical watch out situation – maintain crew and personnel accountability!

Fatigue – fatigued people perform poorly, behave carelessly, tolerate greater errors, and become inattentive. They display decreased motivation, increased irritability, and low morale. They are a hazard in most operations. Watch for behavior changes that indicate employees are fatigued and stressed. Increase rest breaks, and make adjustments in assignment where possible to reduce impacts of physically demanding tasks.

SAFETY IS EVERYONE'S JOB, MAKE IT YOUR PRIORITY!

IMT Safety Officer: Mickey Bunton,

INCIDENT WITHIN AN INCIDENT EMERGENCY ACTION PLAN

Introduction

An emergency such as a helicopter accident, firefighter entrapment or burnover, camp evacuations, vehicle accident, medical emergency or other unknown emergency condition could occur on any of the wild fires or all-risk incidents we may be assigned. This may result in serious injuries or fatalities, and periods of extreme stress. This is called an "incident within an incident (IWI)."

Assignments may be in remote or severely impacted locations that result in longer than normal response times for local emergency response personnel; therefore, the team is responsible for handling the situation professionally, timely and effectively.

The intent of this plan is to establish a process and protocol to effectively manage an emergency situation (IWI) while continuing to manage the primary incident with as minimum of distraction as possible.

General Procedures

In the event of an emergency IWI, notification will be made thru the chain of command to the Operations Section Chief and/or Safety Officer. The Operations Section Chief (OSC) will assume control of the emergency and promptly assign on-scene responsibility to an appropriate Division/Group Supervisor. There will be an IWI IC identified and communicated to all personnel on each division. These individuals will be identified in the incident action plan. If OSC cannot be contacted, the highest qualified operations person or safety officer on scene will assume command of the emergency and take appropriate action.

The Incident Commander and Safety Officer will be notified promptly. The IC will ensure that all remaining command and general staff are notified.

All incident personnel will be instructed by the OSC or Safety Officer to clear the designated radio channel for "emergency traffic" related only to the emergency situation. If OSC or Safety Officer cannot be contacted, the highest qualified person on scene will broadcast "emergency radio traffic." In the event personnel are injured, when they have been loaded and being transported to the hospital or at an appropriate time, OSC or Safety Officer will announce on the radio that "emergency radio traffic" has been canceled and frequency cleared for standard incident communication.

Names of the injured or deceased individuals will not be transmitted on the radio.

To aid in an investigation, deceased individuals or their personal effects will not be moved except to accomplish rescue work or to protect the health and safety of others. The accident scene should be properly identified and protected.

Those directly involved will provide written documentation of their actions. An ICS 214 may be utilized for the initial documentation, but a subsequent narrative will be required.

An After Action Review will be conducted after each emergency incident within an incident to determine strengths and needed improvements.

Functional Assignments

When an emergency situation occurs, all Command & General Staff should quickly assess the situation. The following tasks should be accomplished as appropriate.

Incident Commander (IC)

1. Ensures implementation and accountability of the Incident within an Incident Emergency Action Plan.
2. Notifies the Agency Administrator and Geographic Coordination Center as needed.
3. Approves release of all information regarding the emergency.
4. Determines the need for a Serious Accident Investigation Team (SAIT), if it is a fatality or entrapment on an USFS incident, USDA OIG must be notified by Agency Administrator, and will be the lead on this type of investigation.
5. Determines the need for a Critical Incident Stress Debriefing Team (CISD Team). The request will be routed through the Agency Administrator.
6. Determines which outside authorities need be contacted and initiates contact.
7. In the event a public evacuation is needed, the IC will inform the county sheriff and other officials as needed.

Safety Officer (SOF)

1. Coordinates with and supports the Division/Group Supervisor or person in charge at the scene of the emergency.
2. Initiates investigation and makes recommendation for additional investigation teams as needed.
3. Secures witnesses names and initial statements.
4. Obtains sketches and photos of emergency scene.
5. Obtains assistance from incident Law Enforcement in conducting the initial investigation.
6. Establishes contact with the local Emergency Operation Center prior to an emergency to provide the center with a copy of the Emergency Action Plan and to arrange for a communication link.
7. Completes the wild fire entrapment/fatality initial report (NFES 0859) as needed.

Information Officer (PIO)

1. Prepares and coordinates the release of information in accordance with agency policy and the direction and approval of the IC and Agency Administrator.
2. Provides photographic and video equipment and operators to assist with the investigation as requested.
3. Arranges briefings for incident personnel.

Operation Section Chief (OSC)

1. Implements the Incident Emergency Plan. Supervises the Division/Group Supervisor or person assigned to manage on-scene responsibility of the emergency incident.
2. Identifies nature of incident, number of people involved and their medical condition, location of emergency, and need for transportation and special needs (law enforcement, haz mat, etc).
3. Coordinates air operations as needed.
4. Ensures appropriate IWI organization is put in place to manage the emergency.

Logistics Section Chief (LSC)

1. Orders needed resources for the emergency as requested.
2. Provides ground transportation as needed.
3. Communicates with hospital and ambulance services. Refers to medical plan in place.
4. Coordinates security as necessary to protect accident scene.
5. Arranges for damaged vehicle removal as needed.
6. Provides EMT's to stabilize patients and to accompany injured to hospital.
7. Supervises camp evacuation as needed and ensures evacuation is done calmly and safely.
8. Provides law enforcement officers to assist the Safety Officer with investigation.
9. Provides emergency meal, potable water and supplies to personnel at the emergency site.
10. Communications will monitor the radio and ensure radio channel remain open for emergency communications only.
11. If a fatality has occurred, contacts the county coroner and sheriff's office.
12. Develops camp evacuation plan in advance of an emergency in conjunction with the Safety Officer and LSC.
13. Law Enforcement will :
 - a. Document all post incident activities
 - b. Locate and secure personal effects of injured personnel.

Planning Section Chief (PSC)

1. Develops camp evacuation plan in advance of an emergency in conjunction with the Safety Officer and LSC.
2. Provides resource information, maps and other data as requested and maintains documentation.

Finance Section Chief (FSC)

1. Coordinates with agency administrative staff.
2. Coordinates Compensation/Claims Unit response.

North Carolina Incident Management Team

DIVISION ASSIGNMENT LIST	1. Branch	2. Division/Group Night Shift
---------------------------------	-----------	---

3. Incident Name	4. Operational Period Date: 11/15/13	Time: 2000- 0800
------------------	---	---------------------

5. Operations Personnel

ICT3	Division Supervisors	Brian Smith
Operations Chief	Safety Officers	Mickey Bunton

6. Resources Assigned This Period

Strike Team/Task Force/ Resource Designator	Leader	Demob Date	Number Persons	Trans Needed	Drop Off PT/Time	Pick Up PT/Time
E-3 Appalachian 681 T6 Engine	Brian Smith		+2	N	2000	0800
E-13 Oconee 681 T6 Engine	E. Burrel		+2	N	2000	0800
E-12 Blue Ridge NPS T6 Engine	B. Cherry		+2	N	2000	0800
EMT	K. Kessler		1	N	2000	0800

7. Control Operations

- **Patrol all Divisions, as appropriate**

8. Special Instructions

- **Engines need to make contact with Division Sup. every 2 hrs and Division Sup. Smith needs to make contact with Asheville Dispatch every 2 hrs.**
- **Contact Asheville Dispatch for medical emergency needs from Burke County EMS.**
- **Smoke w/light fog may be an issue along Hwy 181 and 105.**

9. Division/Group Communication Summary

Function	Frequency	System	Channel	Function	Frequency	System	Channel
TAC	170.000		1				
Command	168.725		7				

Prepared By (Resource Unit Leader) Dan Belanger	Approved By (Planning Sect. Ch.) Dan Belanger	Date 11/15/13	Time 1800
---	---	-------------------------	---------------------

INCIDENT RADIO COMMUNICATIONS PLAN

1. Incident Name
Table Rock

2. Date/Time Prepared
11/15/13 1800

3. Operational Period Date/Time
11/15/13 2000-0800

4. BASIC RADIO CHANNEL UTILIZATION

Radio Type/Cache	Channel	Function	Frequency/Tone	Wide/ Narrow	Assignment	Remarks
King NIFC	Ch 1	Tac 1	Rx/Tx 170.000	N	Division A	
King NIFC	CH 2	Tac 2	Rx/Tx 166.675	N	Division B	
King NIFC	CH 3	Tac 3	Rx/Tx 168.600	N	Division C	
King NIFC	CH 4	Tac 4	Rx/Tx 168.050	N	Division D	
King NIFC	CH 5	Tac 5	Rx/Tx 168.200	N	Division E	
King NIFC	CH 6	Clingman Repeater	Rx 168.725 Tone 103.5 Tx 172.225 Tone 136.5	N	Command	
King NIFC	CH 7	High Peak Repeater	Rx 168.725 Tone 103.5 Tx 172.225 Tone 103.5	N	Command	
King NIFC	CH 8	Grandmother Repeater	Rx 168.725 Tone 103.5 Tx 172.225 Tone 146.2	N	Command	
King NIFC	CH 9	Air to Ground 1	Rx/Tx 164.150	N	Primary	
King NIFC	CH 10	Air to Ground 2	Rx/Tx 167.425	N	Secondary	
King NIFC	CH 11	Initial Attack	Rx/Tx 169.900	N	IA	
King NIFC	Ch 12	Open		N		
King NIFC	Ch 13/16	Open		N		

5. Prepared By (Communications Unit)
David Smallman 828-778-2076

ICS 205

NFS 1330

WEATHER FORECAST

FIRE WEATHER FORECAST FOR BURKE MOUNTAINS

ISSUED AT: 300 PM EST FRI NOV 15 2013

	TONIGHT	SAT	SAT NIGHT	SUN
CLOUD COVER	MCLDY	PCLDY	MCLDY	MCLDY
CHANCE PRECIP (%)	70	0	50	70
PRECIP TYPE	RAIN	NONE	RAIN	SHOWERS
MIN/MAX TEMP	41	59	48	60
MAX/MIN RH %	97	58	94	72
WND20FT2MIN/EARLY (MPH)	LGT/VAR	LGT/VAR	LGT/VAR	S 8 G18
WND20FT2MIN/LATE (MPH)	LGT/VAR	S 6	SE 7 G19	S 8 G18
PRECIP DURATION	3	0	2	3
PRECIP AMOUNT	0.10	0.00	0.03	0.21
PRECIP BEGIN	6 PM		9 PM	CONTINUING
PRECIP END	5 AM		CONTINUING	CONTINUING
LAL	1	1	1	1
INVERSION (TEMP/TIME)	0100	43/0800	0100	51/0800
HAINES INDEX	3	3	3	3
DSI		1		1
MIXING HGT (FT-AGL)		4300		3000
TRANSPORT WND (MPH)		S 16		S 18
VENT RATE (MPH-FT)		68800		54000
ADI EARLY	8 POOR	14 GEN POOR	9 POOR	31 FAIR
ADI LATE	3 VERY POOR	54 GEN GOOD	17 GEN POOR	38 FAIR
MAX LVORI EARLY	5	7	5	5
MAX LVORI LATE	7	3	5	4
MIN VSBY EARLY (MI)	2 FOG	1 FOG		
MIN VSBY LATE (MI)	1 FOG	10		

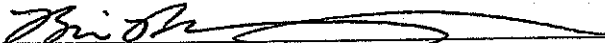
SUNDAY NIGHT AND MONDAY...SHOWERS AND A CHANCE OF THUNDERSTORMS. LOWS AROUND 50. HIGHS IN THE UPPER 50S. MINIMUM RH 48 PERCENT. NORTHWEST WINDS AROUND 10 MPH.

MONDAY NIGHT AND TUESDAY...MOSTLY CLEAR. LOWS IN THE LOWER 30S. HIGHS IN THE UPPER 40S. MINIMUM RH 37 PERCENT. NORTH WINDS AROUND 10 MPH.

TUESDAY NIGHT AND WEDNESDAY...MOSTLY CLEAR. LOWS IN THE UPPER 20S. HIGHS IN THE MID 40S. MINIMUM RH 39 PERCENT. NORTHEAST WINDS AROUND 5 MPH.

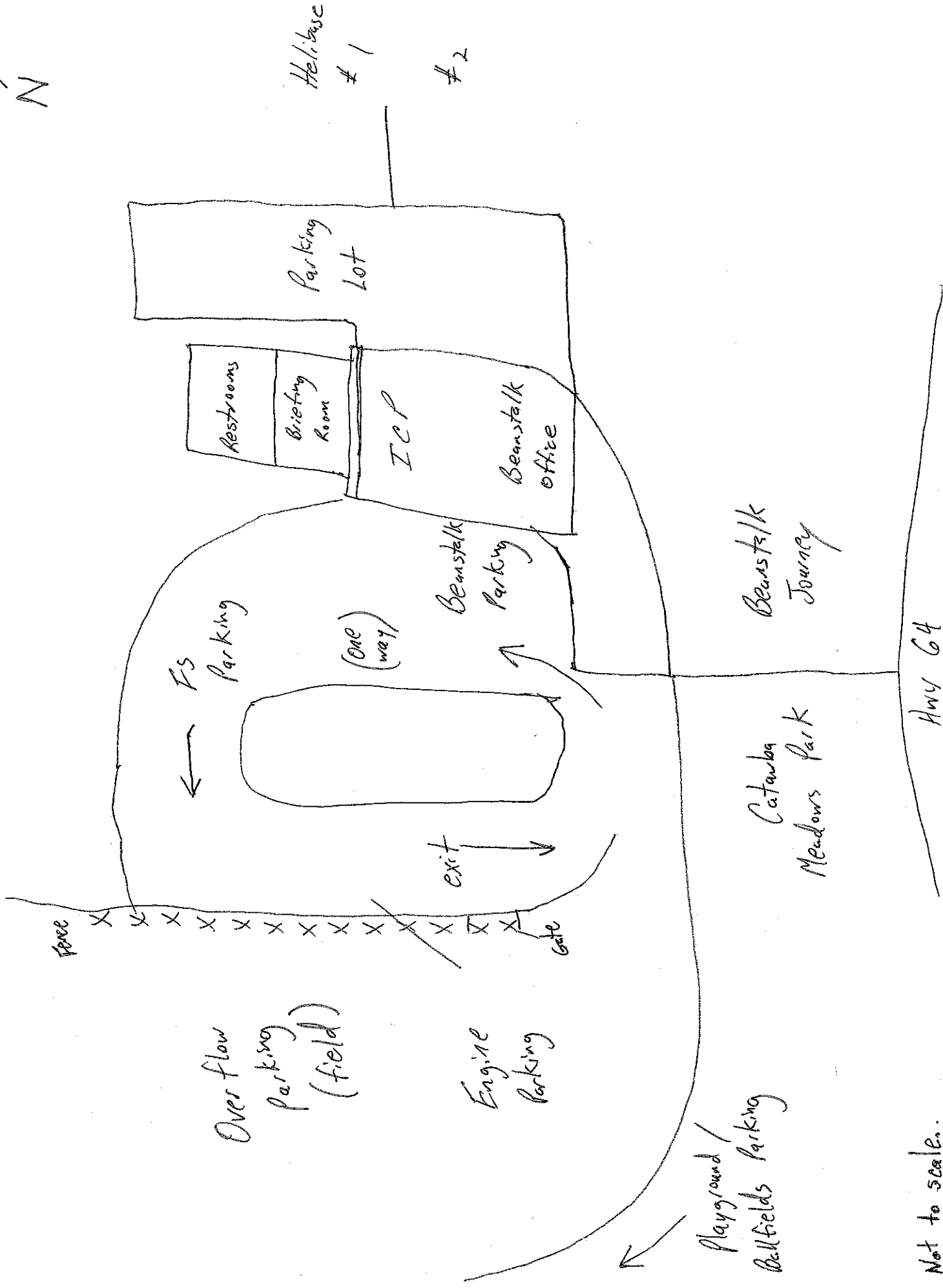
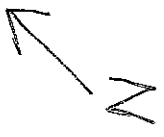
WEDNESDAY NIGHT AND THURSDAY...PARTLY CLOUDY. LOWS IN THE UPPER 20S. HIGHS IN THE UPPER 40S. MINIMUM RH 42 PERCENT. NORTH WINDS AROUND 5 MPH.

THURSDAY NIGHT AND FRIDAY...PARTLY CLOUDY. LOWS IN THE MID 30S. HIGHS IN THE MID 50S. MINIMUM RH 47 PERCENT. NORTH WINDS AROUND 5 MPH.

MEDICAL PLAN	1. Incident Name	2. Date Prepared	3. Time Prepared	4. Operational Period						
	Table Rock Fire	11/12/2013	1730	0600-2200						
5. Incident Medical Aid Station										
Medical Aid Stations		Location			Paramedics Yes No					
Grace Hospital		2201 S Sterling St, Morganton, NC			X					
Memorial Mission (MAMA)		509 Biltmore Ave., Asheville, NC			X					
Johnson City Medical Center (Wings)		400 N. State of Franklin Road Johnson City, TN			X					
6. Transportation										
A. Ambulance Services										
Name		Address		Phone		Paramedics Yes No				
Burke County EOC		Morganton, NC		828-437-1911		X				
AIR AMBULANCES										
MAMA, Asheville		Travel time 25-35 minutes				X				
Wings Air Rescue, Johnson City		Travel time 30-35 minutes				X				
B. Incident Ambulances										
Name		Location			Paramedics Yes No					
7. Hospitals										
Name	Address/ Lat. - Lon.		Travel Time Air Ground		Phone		Helipad Yes No		Burn Center Yes No	
Grace Hospital Morganton	35° 43.34' 81° 39.17'		10 min 45 min		828-659-5175		X		X	
Johnson City, TN Medical Center	36° 18.45' 82° 23.31'		20-25 min 90 min		423-431-6561		X		X	
Memorial Mission	35° 34.53' 82° 32.94'		15-25 min 75 min		828-213-1948		X		X	
Wake Forest Baptist Medical Center	Medical Center Boulevard Winston-Salem, NC 27157 35° 12' 15.69" 80° 16' 18.48"		50 min 180 min		336-713-9000		X		X	
8. Medical Emergency Procedures										
<ol style="list-style-type: none"> 1. Stabilize situation, establish ground contact 2. Provide first aid to patient, request line emt if available, notify supervisor of medical emergency 3. Provide information on injury and necessity to transport (air/ground) 4. If needed and if cell service, burn boss dial 911, request assistance 5. If needed and no cell service, contact Asheville Dispatch by radio to request help 6. If able, transport patient to pick up point 7. Do not use patients name over radio 										
Helispot: Catawba Meadows Park 35° 45' 40" 81° 42' 19"										
Prepared by (Medical Unit Leader) Greg Philipp, DFMO						10. Reviewed by (Safety Officer) 				

	A	B	C
1	Table Rock Fire Cell Phone Numbers		
2			
3	<u>Name</u>	<u>Position</u>	<u>Number</u>
4	Champion, Bill	IC	828-360-4818
5	Little, Steve	IC (t)	828-778-2077
6	McFee, Dave	SOFR	828-208-9930
7	Ibarguen, Derrick	AADM	828-421-4844
8	Browning, Brian	Operations	828-200-0102
9	Eller, Terry	Planning Ops	828-779-2081
10	Smith, Brian	DIVS Night	828-284-7877
11	Paxton, Shane	DIVS	
12	Frisbee, Chase	DIVS	828-553-1055
13	Nelson, David	DIV E	252-571-2325
14	Phillip, Greg	DIVS	828-460-0049
15	Cagle, Kelly	DIVS	336-302-0343
16	Belanger, Dan	RESL	828-231-1529
17	Pullium, Eric	GIST	828-644-8966
18	Williams, Mike	SCKN	828-835-0094
19	Mayo, Jim	LOGC	828-712-7762
20	Snedeker, Rodney	FACL	828-216-2322
21	Smallman, Dave	ORDM	828-778-2076
22	Gay, Charlie	GSUL	828-273-2674
23	Roper, James	RCDM(t)	828-208-3782
24	Bracy, Darlene	DRVR	828-460-3181
25	Smith, CW	DRVR	828-442-1389
26	Walker, Deborah	PIO	910-975-0803
27	Rhea, Rusty	HEBM	828-273-4322
28	Baker, Andy	FBAN	706-400-2150
29	King, Cathy	COST	828-284-0819
30	Lyda-Taylor, Kerri	PTRC	828-776-5989
31	Amaral, Bonnie	FSC2	828-779-2067
32	Roberts, John	PROC	828-337-9127
33	Walker, Mike	PA50	828-337-1312
34	Bently, Wes	HEB2	864-888-7553
35	Egholm, Hans	HMGB	585-278-4206
36	Parker, Shawn	HMGB	706-490-2000
37	Murphy, Jerry	HMGB	828-208-1768
38	Able, Frank	EMTF	423-595-1578
39	Kessler, Kenneth	EMTF	318-729-6442
40	Carothers, Bill	ABRO	828-273-4327
41	Crisp, Jason	Lead LEO	828-442-2470
42	Vines, Nick	Night SEC1	423-297-3181
43	Barnett, Steve	Night SEC1	252-671-5787
44			
45	ICP FAX		828-438-5287

ICP Traffic Pattern



x Not to scale.

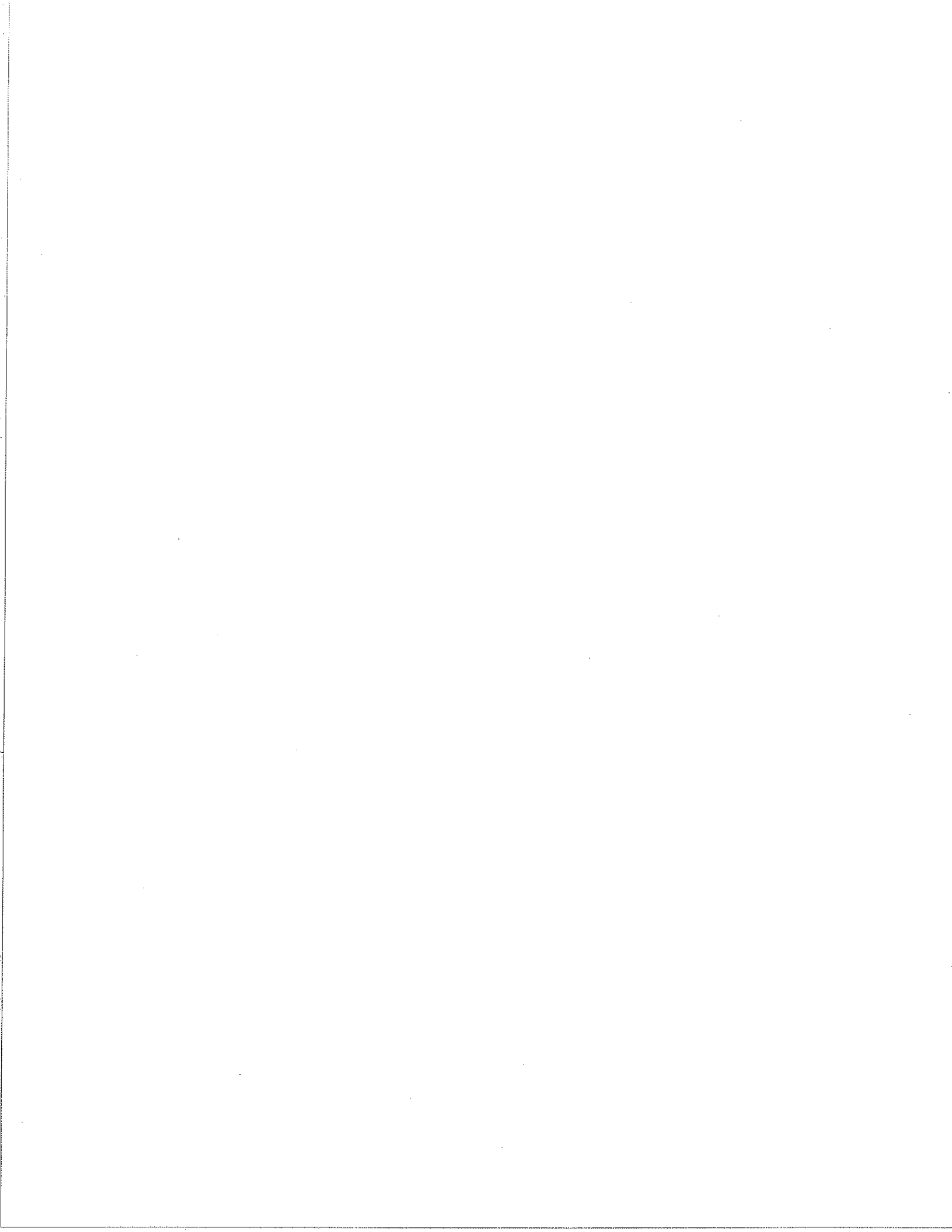
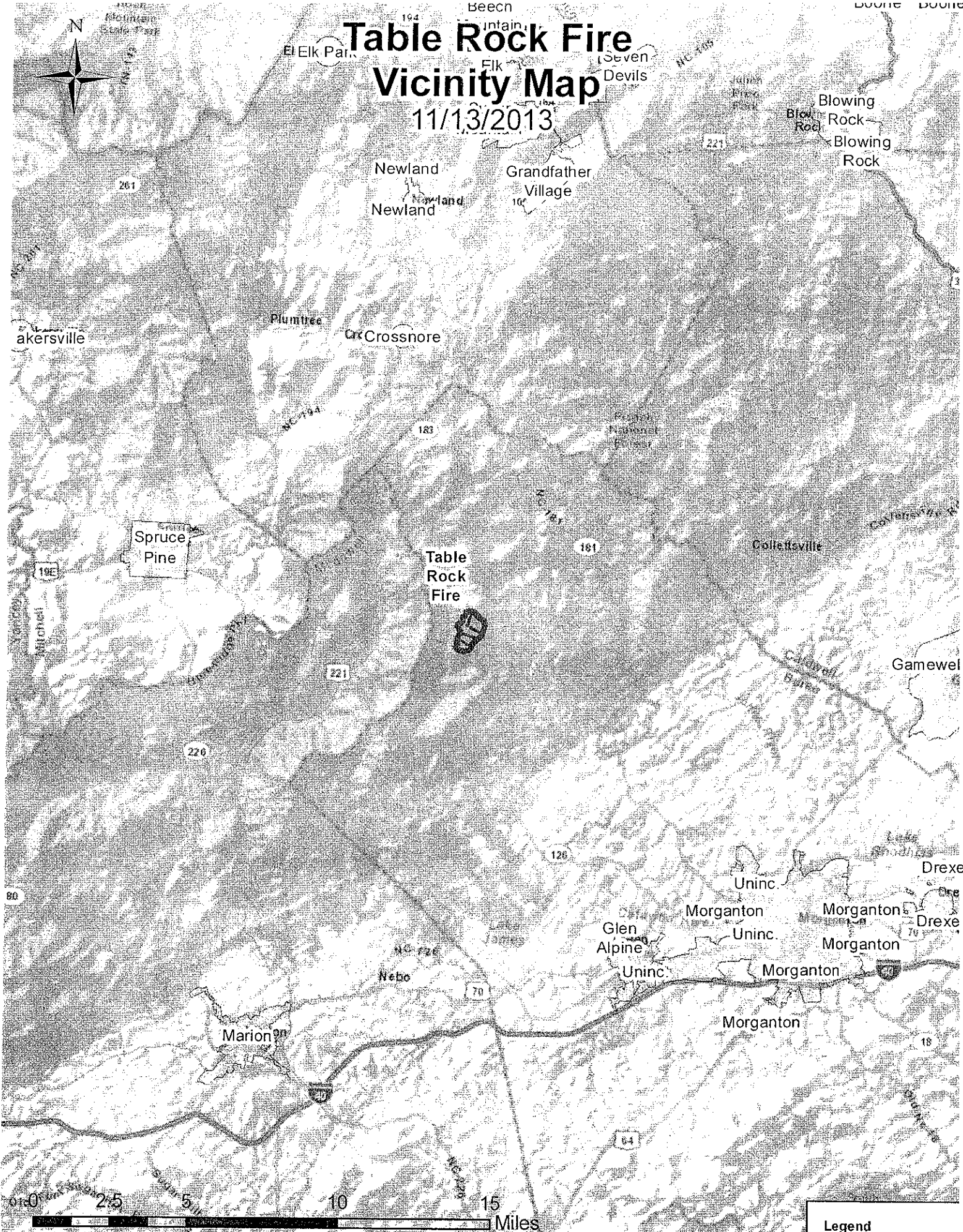


Table Rock Fire Vicinity Map

11/13/2013



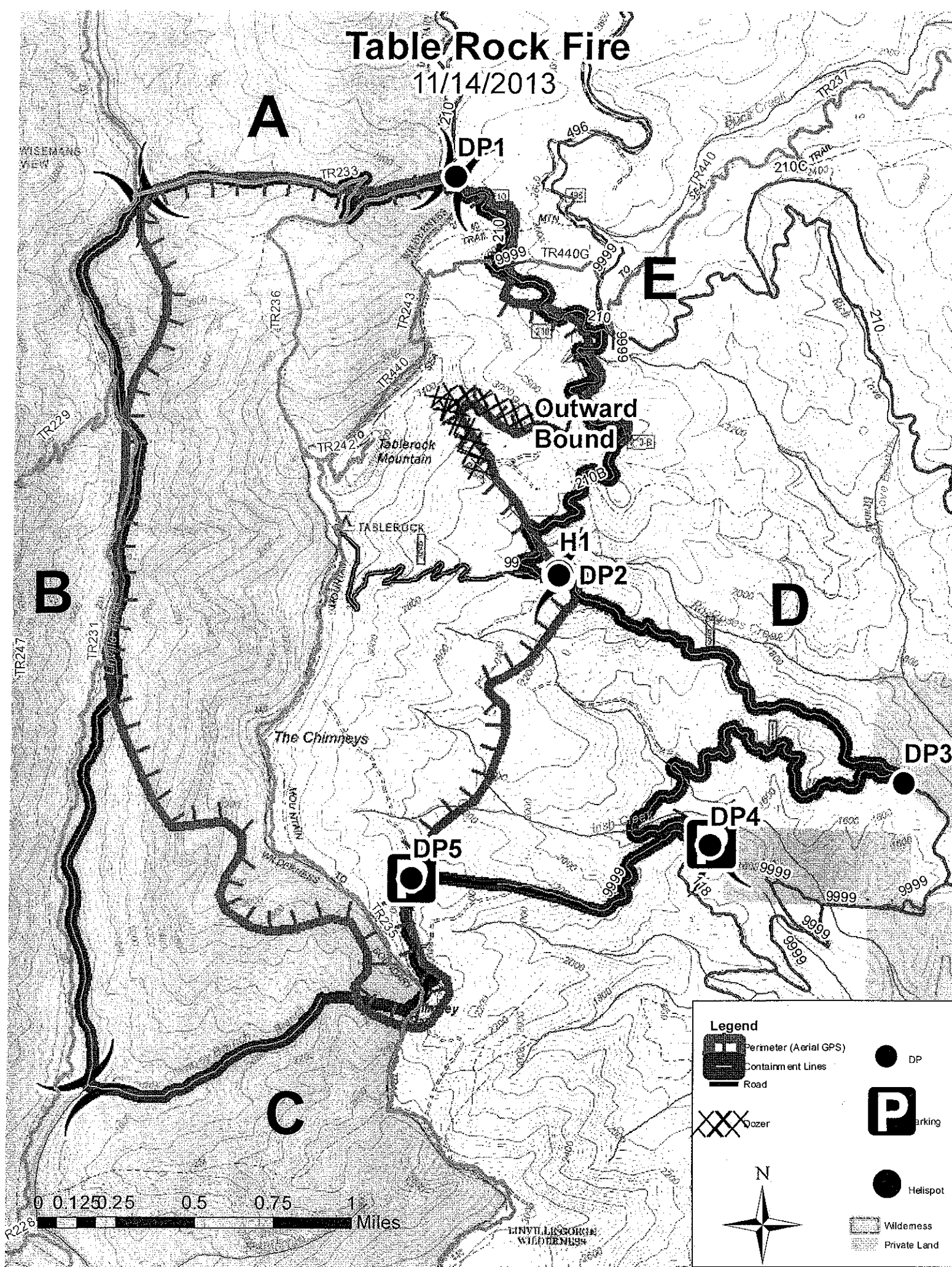
Legend

-  Table Rock Perimeter

Sources: Esri, DeLorme, NAVTEQ, USGS, Intermap, iPC, METI, Esri China (Hong Kong), Esri (Thailand), TomTom

Table Rock Fire

11/14/2013



Legend

- Perimeter (Aerial GPS)
- Containment Lines
- Road
- Dozer
- DP
- Parking
- Helispot
- Wilderness
- Private Land

