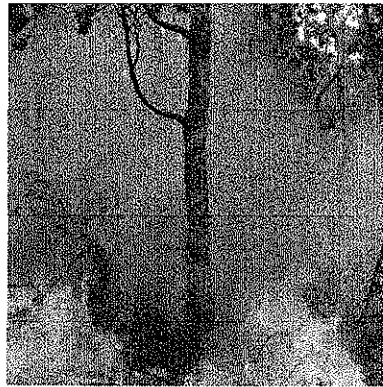


TABLE ROCK

NC-NCF-130066

P8H0Q5 (0811)

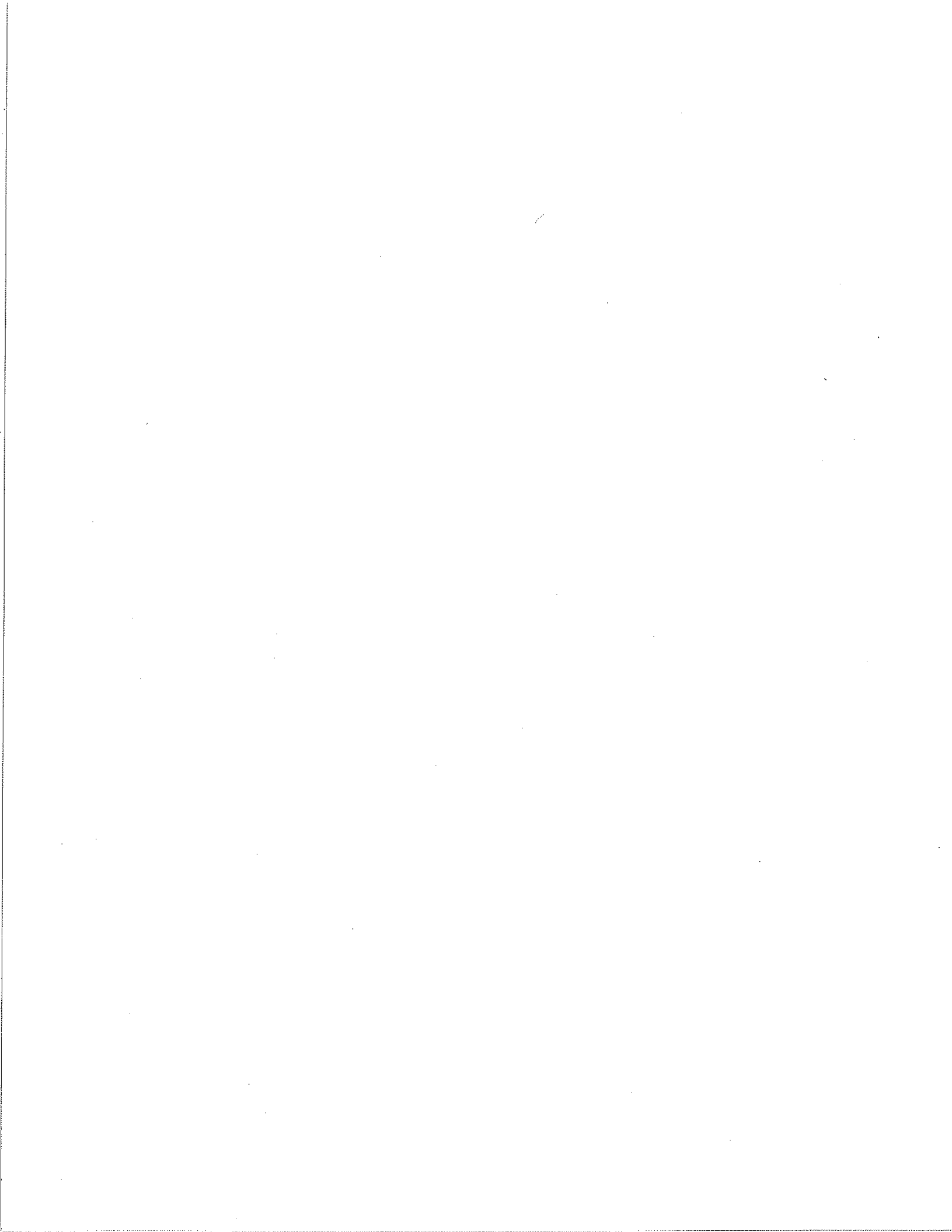
INCIDENT ACTION PLAN



Saturday

November 16, 2013

0700-1900



INCIDENT OBJECTIVES	1. Incident Name	2. Date Prepared	3. Time Prepared
	Table Rock	11/15/13	2000
4. Operational Period Saturday , November 16, 0700 - 1900			
5. General Control Objectives For The Incident (Include Alternatives)			
<p>1. Provide for the highest level of firefighter and public safety by:</p> <ul style="list-style-type: none"> ➤ Implementation of LCES, and review of the Standard Fire Orders and 18 Situations. ➤ Provide an environment where all employees are respected. <p>2. Provide protection of the Outward Bound Base Camp.</p> <p>3. Minimize environmental or cultural concerns related to operational activities by utilizing M.I.S.T. guidelines.</p> <p>4. Keep abreast of, and communicate, changing weather and fire behavior conditions.</p> <p>5. Manage the incident in the most efficient and cost effective manner that is commensurate with values at risk.</p> <p>6. Keep the fire East of Linville River, South of Spence Ridge Trail (233), West of FDR 118; North of Forest Boundary.</p>			
6. Weather Forecast For Period			
See Attached Fire/Weather Forecast.			
7. General Safety Message			
See Attached Safety Message.			
8. ATTACHMENTS (X IF ATTACHED)			
<input checked="" type="checkbox"/> Organization List - ICS 203 <input checked="" type="checkbox"/> Medical Plan - ICS 206 <input checked="" type="checkbox"/> Safety Message <input checked="" type="checkbox"/> Division Assignment Lists - ICS 204 <input checked="" type="checkbox"/> Vicinity Map <input checked="" type="checkbox"/> Fire Weather <input checked="" type="checkbox"/> Communications Plan - ICS 205 <input checked="" type="checkbox"/> Incident Map <input checked="" type="checkbox"/> Air Operations Summary – ICS 220			
9. Prepared By (Planning Section Chief)		10. Approved By (Incident Commander)	
Dan Belanger		Bill Champion	

ORGANIZATION ASSIGNMENT LIST		9. Operations Section	
1. Incident Name Table Rock Fire		Chief	Brian Browning
		Planning/Ops	Terry Eller
		a.	
2. Date 11/14/2013	3. Time 2000	Branch Director	
		Deputy	
4. Operational Period Saturday, November 16, 2013, 0700-1900		Division/Group	A Shane Paxton
		Division/Group	B Shane Paxton
5. Incident Commander and Staff		Division/Group	C Chase Frisbee
Incident Commander	Bill Champion	Division/Group	D Kelly Cagle
Deputy IC	Steve Little	Division/Group	E David Nelson
Safety Officer	.David McFee, Keith Jenkins	Division/Group	
Information Officer	Deborah Walker/Don Simon		
6. Agency Representatives		Division/Group	IA Greg Phillip
Agency	Name	Division/Group	
Acting District Ranger	Greg Phillip	Division/Group	
Agency Administrator	Derek Ibarguen	Division/Group	
Resource Advisor	Debbie Thomas	Division/Group	
Forest FMO	Riva Duncan	c.	
District FMO	Brian Browning	Branch Director	
7. Planning Section		Deputy	
Chief	Dan Belanger	Division/Group	
Deputy		Division/Group	
Resources Unit		Division/Group	
GIS	Eric Pullium	Division/Group	
Documentation Unit		Division/Group	
Demobilization Unit		d. Air Operations Branch	
Check-In	Michael Williams	ATGS	Clint Cross
Human Resources		Helibase Manager	Wes Bently
		Helicopter Manager	Hans Egholm
FBAN	Andrew Baker	Helicopter Manager	Shawn Parker (t)
Technical Specialist		Helicopter Manager	Dave Moore
Technical Specialist		10. Finance Section	
Technical Specialist		Chief	Bonnie Amaral
8. Logistics Section		Deputy	Cathy King
Chief	Jim Mayo	Time Unit	Kerri Lyda-Taylor
Deputy		Procurement Unit	
Receiving & Distribution Mngr		Compensation/Claims Unit	
Facilities Unit	Rodney Snedecker	PA 10	Mike Walker
Ground Support Unit	Jerry Murphy		
Communications Unit		Prepared by (Resource Unit Leader) Dan Belanger	
Medical Unit	Frank Abel		
Security Unit	Jason Crisp		
Ordering Mngr	Dave Smallman		

HEALTH AND SAFETY MESSAGE

SAFETY starts with *YOU*

We are **ALL** accountable for **SAFE** behaviors

INCIDENT: **Table Rock**

PERIOD: **Day Shift, November 16, 2013**

Fire Order of the Day – *Know what your fire is doing at all time.*

Watch Out Situation – *Unburned fuel between you and the fire.*

Major Hazards and Risks:

- **Driving** – SEAT BELTS are mandatory! All occupants of the vehicle must have seat belts fastened while the vehicle is in motion. Drive defensively with lights on at all times and maintain safe following distance between vehicles, anticipate oncoming traffic. Use spotters when backing up especially with heavy equipment/engines. Beware of school zones traveling to incident and local public traffic through Gingercake Acres development and South Table Rock road.
- **Working with Heavy Equipment** – When working around heavy equipment, stay atleast 100 feet in front or 50 feet behind the equipment. In timber, distance should be increased to 2.5 times the canopy height.
- **Weather/fuels** – Weather is average for temperature and humidity, expect fog combined with smoke until inversion lifts. Fuels in historically fire scarred areas will continue to be more active than hardwood litter fuels. Insure that escape routes and safety zones are known and communicated to all personnel on the line.
- **Fatigue/dehydration/personal welfare** – Take care of yourself by getting adequate rest, eating properly, and drink plenty of water. **STAY HYDRATED!** Remember the hydration ratio is 3:1 (3 water/1 gatorade).

REMEMBER – LCES: Lookouts, Communications, Escape Routes, and Safety Zones.

Maintain situational awareness – work aggressively but provide for SAFETY FIRST and initiate all actions based on Safety.

It is easier to avoid than get out of a bad situation!

**SAFETY IS EVERYONE'S JOB, MAKE IT YOUR
PRIORITY!**

IMT Safety Officer: David McFee, Keith Jenkins

INCIDENT WITHIN AN INCIDENT EMERGENCY ACTION PLAN

Introduction

An emergency such as a helicopter accident, firefighter entrapment or burnover, camp evacuations, vehicle accident, medical emergency or other unknown emergency condition could occur on any of the wild fires or all-risk incidents we may be assigned. This may result in serious injuries or fatalities, and periods of extreme stress. This is called an "incident within an incident (IWI)."

Assignments may be in remote or severely impacted locations that result in longer than normal response times for local emergency response personnel; therefore, the team is responsible for handling the situation professionally, timely and effectively.

The intent of this plan is to establish a process and protocol to effectively manage an emergency situation (IWI) while continuing to manage the primary incident with as minimum of distraction as possible.

General Procedures

In the event of an emergency IWI, notification will be made thru the chain of command to the Operations Section Chief and/or Safety Officer. The Operations Section Chief (OSC) will assume control of the emergency and promptly assign on-scene responsibility to an appropriate Division/Group Supervisor. There will be an IWI IC identified and communicated to all personnel on each division. These individuals will be identified in the incident action plan. If OSC cannot be contacted, the highest qualified operations person or safety officer on scene will assume command of the emergency and take appropriate action.

The Incident Commander and Safety Officer will be notified promptly. The IC will ensure that all remaining command and general staff are notified.

All incident personnel will be instructed by the OSC or Safety Officer to clear the designated radio channel for "emergency traffic" related only to the emergency situation. If OSC or Safety Officer cannot be contacted, the highest qualified person on scene will broadcast "emergency radio traffic." In the event personnel are injured, when they have been loaded and being transported to the hospital or at an appropriate time, OSC or Safety Officer will announce on the radio that "emergency radio traffic" has been canceled and frequency cleared for standard incident communication.

Names of the injured or deceased individuals will not be transmitted on the radio.

To aid in an investigation, deceased individuals or their personal effects will not be moved except to accomplish rescue work or to protect the health and safety of others. The accident scene should be properly identified and protected.

Those directly involved will provide written documentation of their actions. An ICS 214 may be utilized for the initial documentation, but a subsequent narrative will be required.

An After Action Review will be conducted after each emergency incident within an incident to determine strengths and needed improvements.

Functional Assignments

When an emergency situation occurs, all Command & General Staff should quickly assess the situation. The following tasks should be accomplished as appropriate.

Incident Commander (IC)

1. Ensures implementation and accountability of the Incident within an Incident Emergency Action Plan.
2. Notifies the Agency Administrator and Geographic Coordination Center as needed.
3. Approves release of all information regarding the emergency.
4. Determines the need for a Serious Accident Investigation Team (SAIT), if it is a fatality or entrapment on an USFS incident, USDA OIG must be notified by Agency Administrator, and will be the lead on this type of investigation.
5. Determines the need for a Critical Incident Stress Debriefing Team (CISD Team). The request will be routed through the Agency Administrator.
6. Determines which outside authorities need be contacted and initiates contact.
7. In the event a public evacuation is needed, the IC will inform the county sheriff and other officials as needed.

Safety Officer (SOF)

1. Coordinates with and supports the Division/Group Supervisor or person in charge at the scene of the emergency.
2. Initiates investigation and makes recommendation for additional investigation teams as needed.
3. Secures witnesses names and initial statements.
4. Obtains sketches and photos of emergency scene.
5. Obtains assistance from incident Law Enforcement in conducting the initial investigation.
6. Establishes contact with the local Emergency Operation Center prior to an emergency to provide the center with a copy of the Emergency Action Plan and to arrange for a communication link.
7. Completes the wild fire entrapment/fatality initial report (NFES 0859) as needed.

Information Officer (PIO)

1. Prepares and coordinates the release of information in accordance with agency policy and the direction and approval of the IC and Agency Administrator.
2. Provides photographic and video equipment and operators to assist with the investigation as requested.
3. Arranges briefings for incident personnel.

Operation Section Chief (OSC)

1. Implements the Incident Emergency Plan. Supervises the Division/Group Supervisor or person assigned to manage on-scene responsibility of the emergency incident.
2. Identifies nature of incident, number of people involved and their medical condition, location of emergency, and need for transportation and special needs (law enforcement, haz mat, etc).
3. Coordinates air operations as needed.
4. Ensures appropriate IWI organization is put in place to manage the emergency.

Logistics Section Chief (LSC)

1. Orders needed resources for the emergency as requested.
2. Provides ground transportation as needed.
3. Communicates with hospital and ambulance services. Refers to medical plan in place.
4. Coordinates security as necessary to protect accident scene.
5. Arranges for damaged vehicle removal as needed.
6. Provides EMT's to stabilize patients and to accompany injured to hospital.
7. Supervises camp evacuation as needed and ensures evacuation is done calmly and safely.
8. Provides law enforcement officers to assist the Safety Officer with investigation.
9. Provides emergency meal, potable water and supplies to personnel at the emergency site.
10. Communications will monitor the radio and ensure radio channel remain open for emergency communications only.
11. If a fatality has occurred, contacts the county coroner and sheriff's office.
12. Develops camp evacuation plan in advance of an emergency in conjunction with the Safety Officer and LSC.
13. Law Enforcement will :
 - a. Document all post incident activities
 - b. Locate and secure personal effects of injured personnel.

Planning Section Chief (PSC)

1. Develops camp evacuation plan in advance of an emergency in conjunction with the Safety Officer and LSC.
2. Provides resource information, maps and other data as requested and maintains documentation.

Finance Section Chief (FSC)

1. Coordinates with agency administrative staff.
2. Coordinates Compensation/Claims Unit response.

North Carolina Incident Management Team

DIVISION ASSIGNMENT LIST				1. Branch		2. Division/Group C	
3. Incident Name Table Rock				4. Operational Period Date: 11/16/2013 Time: 0700			
5. Operations Personnel							
ICT3		Bill Champion		Division Supervisors		Chase Frisbee	
Operations Chief		Browning/Eller		Safety Officers		David McFee	
6. Resources Assigned This Period							
Strike Team/Task Force/ Resource Designator	Leader	Demob Date	Number Persons	Trans Needed	Drop Off PT/Time	Pick Up PT/Time	
Pat-Rick Type 2 IA	C. McLauchlan		20		0700	1900	
Dozer D&D Motors T3	S.Young		2		0700	1900	
HEQB (t)	F. Sutton		1		0700	1900	
Cherokee IHC	D.Trentham		10		0700	1900	
Savannah River T6 Eng #E3	K. Aiken		+2		0700	1900	
CS/NWR T6 Eng #E262	D.Odegard		+2		0700	1900	
Dozer T2	TBD				0700	1900	
Dozer T2	TBD				0700	1900	
7. Control Operations							
<ul style="list-style-type: none"> Patrol and hold line. Prep. FDR 118 south toward Forest Service boundary for future burning operations. 							
8. Special Instructions							
<ul style="list-style-type: none"> Identify Fallers within the Division. M.I.S.T. tactics, as appropriate Maintain LCES Medical emergencies need to contact Division Sup. And follow Medical Plan, as appropriate. Each Division will identify an "Incident within an Incident" IC for that Division being " _____ " 							
Function	Frequency	System	Channel	Function	Frequency	System	Channel
TAC 3	168.600		3				
Air to Ground	164.150		9				
Prepared By (Resource Unit Leader)			Approved By (Planning Sect. Ch.)			Date	Time
Dan Belanger			Dan Belanger			11/15/13	2100

ICS 204

NFES 1328

DIVISION ASSIGNMENT LIST				1. Branch		2. Division/Group D	
3. Incident Name Table Rock				4. Operational Period Date: 11/16/2013 Time: 0700			
5. Operations Personnel							
ICT3		Bill Champion		Division Supervisors		Kelly Cagle	
Operations Chief		Browning/Eller		Safety Officers		David McFee	
6. Resources Assigned This Period							
Strike Team/Task Force/ Resource Designator	Leader	Demob Date	Number Persons	Trans Needed	Drop Off PT/Time	Pick Up PT/Time	
Smokey Mtn. Fuels Module	J. Black		+5		0700	1900	
UTV	K. Cagle		1		0700	1900	
EMT	Frank Abel				0700	1900	
			1				
Security Specialist II	TBD		1		0700	1900	
7. Control Operations							
<ul style="list-style-type: none"> Continue burnout operations from DP2 south and east to C/D break Hold backing fire along the road. 							
8. Special Instructions							
<ul style="list-style-type: none"> Identify Fallers within the Division. Maintain LCES Medical emergencies need to contact Division Sup. And follow Medical Plan, as appropriate. Utilize EMT between divisions, as needed. If bucket work is needed, make request through the Div. Sup. Each Division will identify an "Incident within an Incident" IC for that Division, being "_____" Determine potential look-out locations. Place Security II Specialist at DP3 for closure. 							
Function	Frequency	System	Channel	Function	Frequency	System	Channel
TAC 4	168.050		4				
Air to Ground	164.150		9				
Prepared By (Resource Unit Leader)			Approved By (Planning Sect. Ch.)			Date	Time
Dan Belanger			Dan Belanger			11/15/13	2200

ICS 204

NFES 1328

DIVISION ASSIGNMENT LIST				1. Branch		2. Division/Group E	
3. Incident Name Table Rock				4. Operational Period Date: 11/16/2013 Time: 0700			
5. Operations Personnel							
ICT3		Bill Champion		Division Supervisors		David Nelson	
Operations Chief		Browning/Eller		Safety Officers		Keith Jenkins	
6. Resources Assigned This Period							
Strike Team/Task Force/ Resource Designator		Leader	Demob Date	Number Persons	Trans Needed	Drop Off PT/Time	Pick Up PT/Time
(E-6) Croatan T6 Engine #632		M. Teel		2		0700	1900
(E-5) Croatan T6 Engine # 631		A. Hill		2		0700	1900
Engine T6 # 651		R. Knight		2		0700	1900
Engine T6 # 671		B.Coats		3		0700	1900
Oak Hill Engine T1		TBD		2		0700	1900
Jonas Ridge Engine T6		TBD		2		0700	1900
7. Control Operations							
<ul style="list-style-type: none"> Mop-Up and hold division break south to Outward Bound Camp. Patrol and Mop-up Rose Creek drainage to FDR 210b. 							
8. Special Instructions							
<ul style="list-style-type: none"> Provide structure protection prep., as needed. Assist other divisions, as needed Identify Fallers within the Division. Maintain LCES Medical emergencies need to contact Division Sup. And follow Medical Plan, as appropriate. If bucket work is needed, make request through the Div. Sup. Each Division will identify an "Incident within an Incident" IC for that Division being " _____ " 							
Function	Frequency	System	Channel	Function	Frequency	System	Channel
TAC 5	168.200		5				
Air to Ground	164.150		9				
Prepared By (Resource Unit Leader)			Approved By (Planning Sect. Ch.)		Date	Time	
Dan Belanger			Dan Belanger		11/15/13	2100	

ICS 204

NFES 1328

AIR OPERATIONS SUMMARY

Prepared By: Dan Belanger

Prepared Date: 11/15/13

Prepared Time: 2000

1. NAME: Catawba Helibase		2. OPS PERIOD DATE: Saturday, Nov. 16, 2013		START TIME: 0800	END TIME: 1900	SUNRISE: 0704	SUNSET: 1719
3. REMARKS (Safety Notes, Hazards, Air Operations Special Equipment, etc.): TFR is established over the Incident Mission Request thru DIVS to OPS							
4. READY ALERT AIRCRAFT MEDIVAC or IA- Either depending availability				5. TFR 3-9717 5500 AGL			

6. PERSONNEL	NAME	PHONE #	7. FREQUENCIES	AM	FM	8. FIXED-WING- Type/ Make-Model/ N#/ Base
AOBD			AIR/ AIR FW			AIRTANKERS-
ASGS			AIR/ AIR RW- FF		122.925	LEAD PLANES-
ATGS			AIR/ GROUND		164.150 TXRX	
ATGS	Clint Cross		COMMAND			
HLCO						
HEB2	Wes Bently	864-888-7553	DECK		163.100	
HEB1-T			TOLC		N/A	
						OTHER FW AIRCRAFT-

9. HELICOPTERS (Use Additional Sheets as Necessary)

FAA N#	TY	MAKE/ MODEL	BASE	AVAIL	START	Managers	FAA N#	T Y	MAKE/ MODEL	BASE	AVAIL	START	REMARKS
3HA	III		ICP-field	0800	0800	Shawn Parker							706-490-2000
8HX	II		ICP-field	0800	0800	Hans Egholm							585-278-4206
CH	I		Morganton Airport	0800	1000	Dave Moore Clint Cross							513-616-9192 404-909-2132 512-787-9081

10. TASK/ MISSION/ ASSIGNMENT (Type/function includes: Air Tactical, Retardant, Recon, Personnel Transport, Bucket Operations, SAR, etc.)				
TYPE/FUNCTION	NAME OF PERSONNEL OR CARGO (if applicable) or instructions for tactical aircraft	MISSION START	FLY FROM	FLY TO
		0800		
		0800		Initial Attack

FIRE BEHAVIOR FORECAST

FORECAST NUMBER: 3	TYPE OF FIRE: Wildfire
FIRE NAME: Table Rock	OPERATIONAL PERIOD: 11/16/13
DATE ISSUED: November 15th, 2013	TIME ISSUED: 2000
UNIT: NC-NCF	SIGNED: /s/ Andy Baker / Andy Baker FBAN

INPUTS

WEATHER SUMMARY:

****Continued Cloudy and Moderating Weather Conditions ****

Today: Mostly cloudy skies. Max Temp: 60 degrees Min RH: 58%
Winds: Light and variable becoming south at 6 mph in the afternoon
Mixing Ht: 500-1000 ft. AGL in the morning...increasing to 2200 ft. AGL in the afternoon
Transport Winds: South 9 to 14 mph
Smoke Dispersion: Very poor in the morning increasing to fair in the afternoon

Tonight: Mostly cloudy with slight chance of rain. Low Temp: 41 degrees Max RH: 100%
Winds: Calm

Sunday: Mostly Cloudy. Max Temp: 60 degrees Min RH: 70% Winds: South at 5 mph

OUTPUTS

FIRE BEHAVIOR

GENERAL:

- In Fuel Model 9 (hardwood litter) expect forward rates of spread around 5 chains/hour and flame lengths of 2 feet. For backing fire expect around 1-2 ch/hr ROS with 1-2 foot flame lengths.
- In Fuel Model 5 and 11 (historically fire scarred areas) backing and flanking rates of spread will range from 2 to 6 chains/hour. Flame lengths should range from 2 to 3 feet in shrub fuels and/or downed woody slash.

SPECIFIC:

Divisions A/D/E: continued smoldering and consumption of heavy fuels

Division B/C: fire will continue to flank and back primarily to the southwest in the Linville Gorge Wilderness

AIR OPERATIONS:

- Expect inversion to break by mid-morning (1000)
- Afternoon mixing heights around 2200 feet AGL

SAFETY

- Combination of smoky, moist, and stagnant air will result in very low visibility and dangerous driving conditions in the morning.
- Forecasted Fire Danger Ratings (from North Cove Pinnacle RAWS):
ERC – 36 (90th percentile) BI – 30 (90th percentile)

INCIDENT RADIO COMMUNICATIONS PLAN

1. Incident Name
Table Rock

2. Date/Time Prepared
11/15/13 1800

3. Operational Period Date/Time
11/16/13 0700-1900

4. BASIC RADIO CHANNEL UTILIZATION

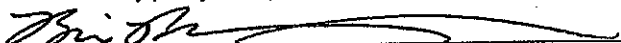
Radio Type/Cache	Channel	Function	Frequency/Tone	Wide/ Narrow	Assignment	Remarks
King NIFC	Ch 1	Tac 1	Rx/Tx 170.000	N	Division A	
King NIFC	CH 2	Tac 2	Rx/Tx 166.675	N	Division B	
King NIFC	CH 3	Tac 3	Rx/Tx 168.600	N	Division C	
King NIFC	CH 4	Tac 4	Rx/Tx 168.050	N	Division D	
King NIFC	CH 5	Tac 5	Rx/Tx 168.200	N	Division E	
King NIFC	CH 6	Clingman Repeater	Rx 168.725 Tone 103.5 Tx 172.225 Tone 136.5	N	Command	
King NIFC	CH 7	High Peak Repeater	Rx 168.725 Tone 103.5 Tx 172.225 Tone 103.5	N	Command	
King NIFC	CH 8	Grandmother Repeater	Rx 168.725 Tone 103.5 Tx 172.225 Tone 146.2	N	Command	
King NIFC	CH 9	Air to Ground 1	Rx/Tx 164.150	N	Primary	
King NIFC	CH 10	Air to Ground 2	Rx/Tx 167.425	N	Secondary	
King NIFC	CH 11	Initial Attack	Rx/Tx 169.900	N	IA	
King NIFC	Ch 12	Open		N		
King NIFC	Ch 13/16	Open		N		

5. Prepared By (Communications Unit)
David Smallman 828-778-2076

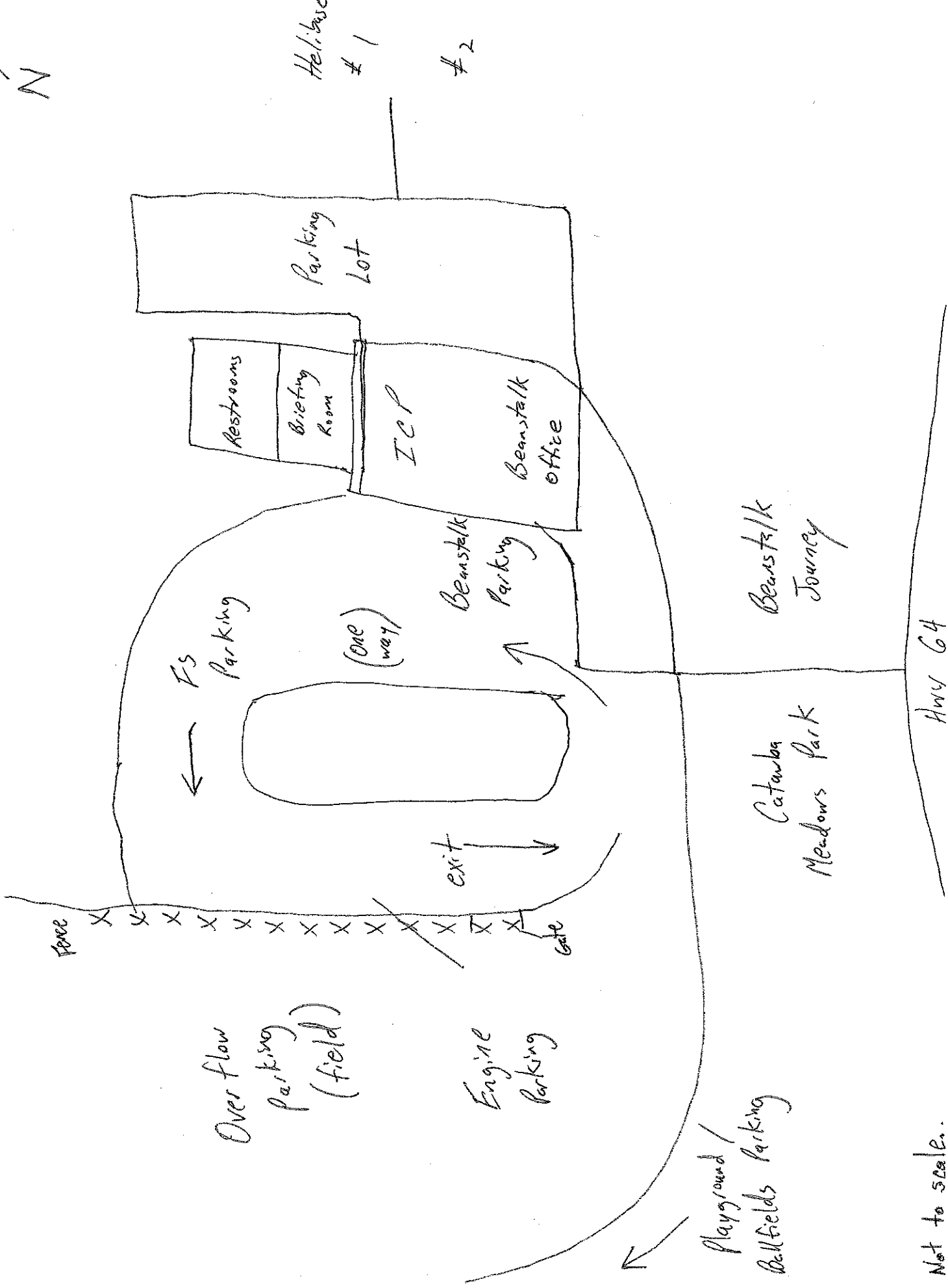
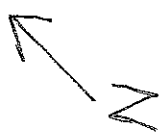
ICS 205

NFS 1330

	A	B	C
1	Table Rock Fire Cell Phone Numbers		
2			
3	<u>Name</u>	<u>Position</u>	<u>Number</u>
4	Champion, Bill	IC	828-360-4818
5	Little, Steve	IC (t)	828-778-2077
6	McFee, Dave	SOFR	828-208-9930
7	Ibarguen, Derrick	AADM	828-421-4844
8	Browning, Brian	Operations	828-200-0102
9	Eller, Terry	Planning Ops	828-779-2081
10	Smith, Brian	DIVS Night	828-284-7877
11	Paxton, Shane	DIVS	865-414-6460
12	Frisbee, Chase	DIVS	828-553-1055
13	Nelson, David	DIV E	252-571-2325
14	Phillip, Greg	DIVS	828-460-0049
15	Cagle, Kelly	DIVS	336-302-0343
16	Belanger, Dan	RESL	828-231-1529
17	Pullium, Eric	GIST	828-644-8966
18	Williams, Mike	SCKN	828-835-0094
19	Mayo, Jim	LOGC	828-712-7762
20	Snedeker, Rodney	FACL	828-216-2322
21	Smallman, Dave	ORDM	828-778-2076
22	Gay, Charlie	GSUL	828-273-2674
23	Roper, James	RCDM(t)	828-208-3782
24	Bracy, Darlene	DRVR	828-460-3181
25	Smith, CW	DRVR	828-442-1389
26	Walker, Deborah	PIO	910-975-0803
27	Rhea, Rusty	HEBM	828-273-4322
28	Baker, Andy	FBAN	706-400-2150
29	King, Cathy	COST	828-284-0819
30	Lyda-Taylor, Kerri	PTRC	828-776-5989
31	Amaral, Bonnie	FSC2	828-779-2067
32	Roberts, John	PROC	828-337-9127
33	Walker, Mike	PA50	828-337-1312
34	Bently, Wes	HEB2	864-888-7553
35	Egholm, Hans	HMGB	585-278-4206
36	Parker, Shawn	HMGB	706-490-2000
37	Murphy, Jerry	HMGB	828-208-1768
38	Able, Frank	EMTF	423-595-1578
39	Kessler, Kenneth	EMTF	318-729-6442
40	Carothers, Bill	ABRO	828-273-4327
41	Crisp, Jason	Lead LEO	828-442-2470
42	Vines, Nick	Night SEC1	423-297-3181
43	Barnett, Steve	Night SEC1	252-671-5787
44			
45	ICP FAX		828-438-5287

MEDICAL PLAN	1. Incident Name	2. Date Prepared	3. Time Prepared	4. Operational Period			
	Table Rock Fire	11/12/2013	1730	0600-2200			
5. Incident Medical Aid Station							
Medical Aid Stations		Location		Paramedics Yes No			
Grace Hospital		2201 S Sterling St, Morganton, NC		X			
Memorial Mission (MAMA)		509 Biltmore Ave., Asheville, NC		X			
Johnson City Medical Center (Wings)		400 N. State of Franklin Road Johnson City, TN		X			
6. Transportation							
A. Ambulance Services							
Name		Address		Phone	Paramedics Yes No		
Burke County EOC		Morganton, NC		828-437-1911	X		
AIR AMBULANCES							
MAMA, Asheville		Travel time 25-35 minutes			X		
Wings Air Rescue, Johnson City		Travel time 30-35 minutes			X		
B. Incident Ambulances							
Name		Location		Paramedics Yes No			
7. Hospitals							
Name	Address/ Lat. - Lon.	Travel Time Air Ground		Phone	Helipad Yes No	Burn Center Yes No	
Grace Hospital Morganton	35° 43.34' 81° 39.17'	10 min	45 min	828-659-5175	X		X
Johnson City, TN Medical Center	36° 18.45' 82° 23.31'	20-25 min	90 min	423-431-6561	X		X
Memorial Mission	35° 34.53' 82° 32.94'	15-25 min	75 min	828-213-1948	X		X
Wake Forest Baptist Medical Center	Medical Center Boulevard Winston-Salem, NC 27157 35° 12' 15.69" 80° 16' 18.48"	50 min	180 min	336-713-9000	X		X
8. Medical Emergency Procedures							
<ol style="list-style-type: none"> 1. Stabilize situation, establish ground contact 2. Provide first aid to patient, request line emt if available, notify supervisor of medical emergency 3. Provide information on injury and necessity to transport (air/ground) 4. If needed and if cell service, burn boss dial 911, request assistance 5. If needed and no cell service, contact Asheville Dispatch by radio to request help 6. If able, transport patient to pick up point 7. Do not use patients name over radio 							
Helispot: Catawba Meadows Park 35° 45' 40" 81° 42' 19"							
Prepared by (Medical Unit Leader) Greg Philipp, DFMO				10. Reviewed by (Safety Officer) 			

ICP Traffic Pattern



x Not to scale.

Table Rock Fire Vicinity Map

11/13/2013

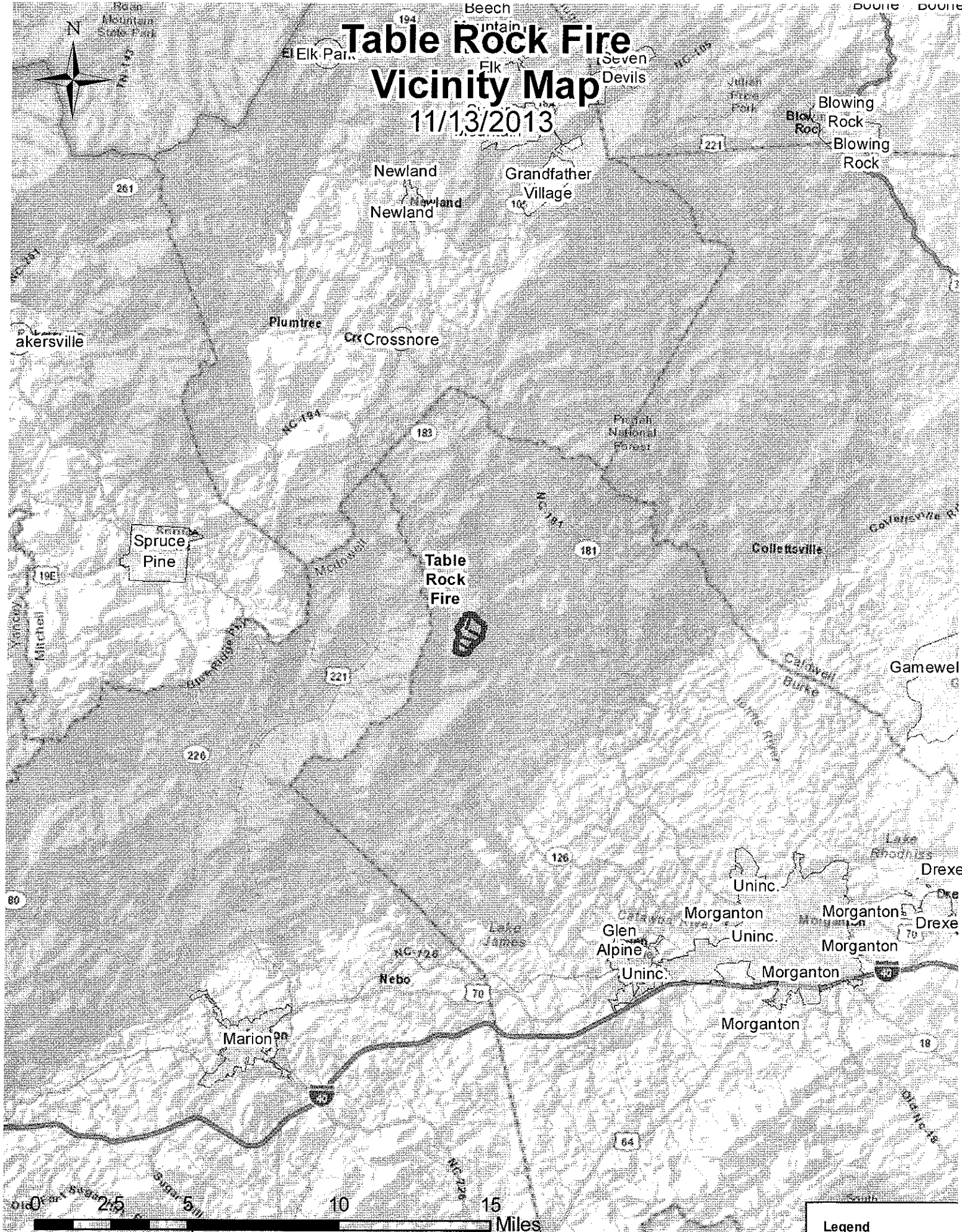



Table Rock Fire

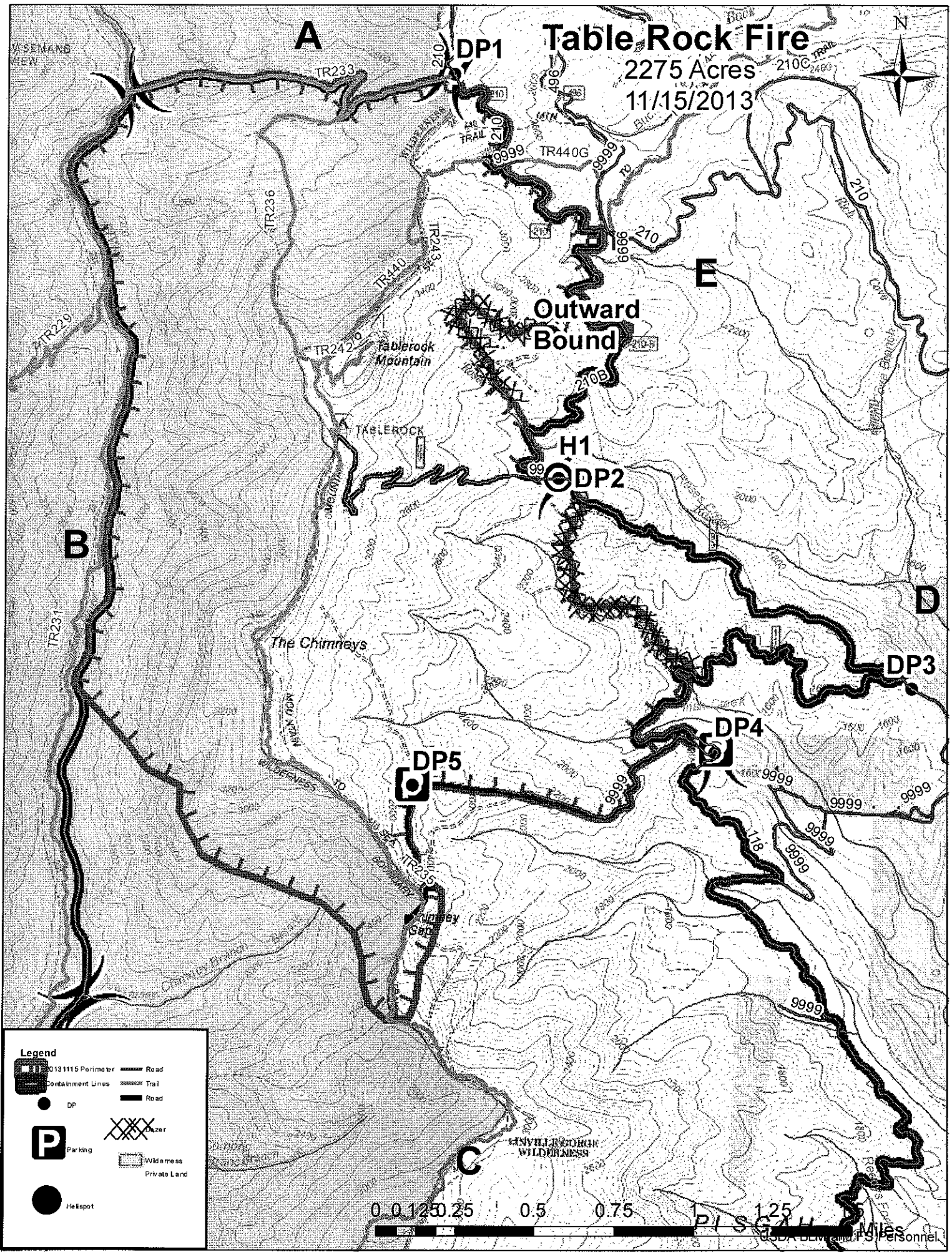
Legend

 Table Rock Perimeter

Sources: Esri, DeLorme, NAVTEQ, USGS, Intermap, iPC, METI, Esri China (Hong Kong), Esri (Thailand), TomTom

Table Rock Fire

2275 Acres
11/15/2013



B

A

E

D

H1

DP5

DP4

DP3

DP1

DP2

C

Legend

- 0131115 Perimeter
- Containment Lines
- DP
- Parking
- Hotspot
- Road
- Trail
- Clear
- Wilderness
- Private Land



USDA BLM and FSI Personnel

