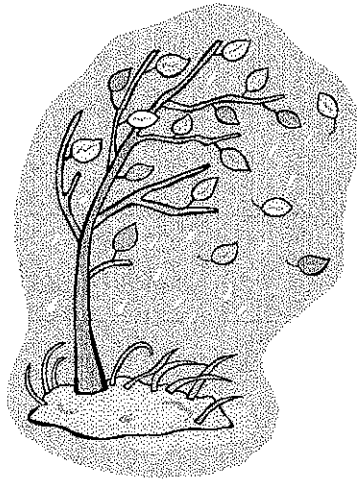


TABLE ROCK

NC-NCF-130066

P8H0Q5 (0811)

INCIDENT ACTION PLAN



MONDAY
NOVEMBER 18, 2013
0700-1900

INCIDENT OBJECTIVES	1. Incident Name Table Rock	2. Date Prepared 11/17/13	3. Time Prepared 2000
4. Operational Period Monday, November 18, 0700 - 1900			
5. General Control Objectives For The Incident (Include Alternatives) <ul style="list-style-type: none"> 1. Provide for the highest level of firefighter and public safety by: <ul style="list-style-type: none"> ➤ Implementation of LCES, and review of the Standard Fire Orders and 18 Situations. ➤ Provide an environment where all employees are respected. 2. Provide protection of the Outward Bound Base Camp. 3. Minimize environmental or cultural concerns related to operational activities by utilizing M.I.S.T. guidelines. 4. Keep abreast of, and communicate, changing weather and fire behavior conditions. 5. Manage the incident in the most efficient and cost effective manner that is commensurate with values at risk. 6. Keep the fire East of Linville River, South of Spence Ridge Trail (233), West of FDR 118 and west of the Wolfpit Trailhead, North of the Forest boundary and North of the control line established from previous N.C. Wildlife Resource Commission (NCWRC) prescribe burn located in the Northwest corner of NCWRC property. 			
6. Weather Forecast For Period See Attached Fire/Weather Forecast.			
7. General Safety Message See Attached Safety Message.			
8. ATTACHMENTS (X IF ATTACHED) <ul style="list-style-type: none"> <li style="width: 33%;"><input checked="" type="checkbox"/> Organization List - ICS 203 <li style="width: 33%;"><input checked="" type="checkbox"/> Medical Plan - ICS 206 <li style="width: 33%;"><input checked="" type="checkbox"/> Safety Message <li style="width: 33%;"><input checked="" type="checkbox"/> Division Assignment Lists - ICS 204 <li style="width: 33%;"><input checked="" type="checkbox"/> Vicinity Map <li style="width: 33%;"><input checked="" type="checkbox"/> Fire Weather <li style="width: 33%;"><input checked="" type="checkbox"/> Communications Plan - ICS 205 <li style="width: 33%;"><input checked="" type="checkbox"/> Incident Map <li style="width: 33%;"><input checked="" type="checkbox"/> Air Operations Summary – ICS 220 			
9. Prepared By (Planning Section Chief) Dan Belanger	10. Approved By (Incident Commander) Bill Champion		

ORGANIZATION ASSIGNMENT LIST		9. Operations Section	
1. Incident Name Table Rock Fire		Chief	Brian Browning
		Planning/Ops	Terry Eller
		a.	
2. Date 11/17/2013		3. Time 2000	
		Branch Director	
		Deputy	
4. Operational Period Monday, November 18, 2013, 0700-1900		Division/Group	A Shane Paxton
		Division/Group	B Shane Paxton
5. Incident Commander and Staff		Division/Group	C
Incident Commander	Bill Champion	Division/Group	D/H/G Kelly Cagle
Deputy IC	Steve Little	Division/Group	E David Nelson
Safety Officer	David McFee, Keith Jenkins	Division/Group	F Chase Frisbee
Information Officer	Deborah Walker/Don Simon		
6. Agency Representatives		Division/Group	IA Greg Phillip
Agency	Name	Division/Group	
Acting District Ranger	Greg Phillip	Division/Group	
Agency Administrator	Derek Ibarguen	Division/Group	
Resource Advisor	Debbie Thomas	Division/Group	
Forest FMO	Riva Duncan	c.	
District FMO	Brian Browning	Branch Director	
7. Planning Section		Deputy	
Chief	Dan Belanger	Division/Group	
Deputy		Division/Group	
Resources Unit		Division/Group	
GIS	Eric Pullium	Division/Group	
Documentation Unit		Division/Group	
Demobilization Unit		d. Air Operations Branch	
Check-In	Michael Williams	ATGS	Clint Cross
Human Resources		Helibase Manager	Paul Borden
		Helicopter Manager	Hans Egholm
FBAN	Andrew Baker	Helicopter Manager	Shawn Parker (t)
Technical Specialist		Helicopter Manager	Dave Moore
Technical Specialist		10. Finance Section	
Technical Specialist		Chief	Bonnie Amaral
8. Logistics Section		Deputy	Cathy King
Chief	Jim Mayo	Time Unit	Kerri Lyda-Taylor
Deputy		Procurement Unit	
Receiving & Distribution Mngr		Compensation/Claims Unit	
Facilities Unit	Rodney Snedecker	PA 10	Mike Walker
Ground Support Unit	Jerry Murphy		
Communications Unit		Prepared by (Resource Unit Leader) Dan Belanger	
Medical Unit	Frank Abel		
Security Unit	Jason Crisp		
Ordering Mngr	Dave Smallman		

HEALTH AND SAFETY MESSAGE

SAFETY starts with YOU

We are ALL accountable for SAFE behaviors

INCIDENT: **Table Rock**

PERIOD: **Day Shift, November 18, 2013**

Fire Order of the Day – *Maintain prompt communications with your forces, your supervisor, and adjoining forces.*

Watch Out Situation – *Uninformed on strategy, tactics and hazards .*

Major Hazards and Risks:

- **Driving** – SEAT BELTS are mandatory! All occupants of the vehicle must have seat belts fastened while the vehicle is in motion. Drive defensively with lights on at all times and maintain safe following distance between vehicles, anticipate oncoming traffic. Use spotters when backing up especially with heavy equipment/engines. Beware of school zones traveling to incident and local public traffic through Gingercake Acres housing development, FDR# 118 South Table Rock road and NC Highway 105 and 126.
- **Communications** – maintain communications with appropriate supervisor. Be clear, concise and make sure you understand the assignment, confirm and validate communications based on communication plan.
- **Working with Heavy Equipment** – When working around heavy equipment, stay atleast 100 feet in front or 50 feet behind the equipment. In timber, distance should be increased to 2.5 times the canopy height.
- **Hazard Tree Safety** – All firefighters should frequently survey their work area for potential hazard trees. Review Hazard Tree safety in IRPG pg. 20,21 to address situational awareness and hazard control.

REMEMBER – LCES: Lookouts, Communications, Escape Routes, and Safety Zones.

Maintain situational awareness – thunderstorm safety, observe the 30/30 rule and hazard mitigation outlined and referenced in IRPG pg. 19.

SAFETY IS EVERYONE’S JOB, MAKE IT YOUR PRIORITY!

IMT Safety Officers: David McFee, Keith Jenkins, Mickey Bunton, Gary Mease

INCIDENT WITHIN AN INCIDENT EMERGENCY ACTION PLAN

Introduction

An emergency such as a helicopter accident, firefighter entrapment or burnover, camp evacuations, vehicle accident, medical emergency or other unknown emergency condition could occur on any of the wild fires or all-risk incidents we may be assigned. This may result in serious injuries or fatalities, and periods of extreme stress. This is called an "incident within an incident (IWI)."

Assignments may be in remote or severely impacted locations that result in longer than normal response times for local emergency response personnel; therefore, the team is responsible for handling the situation professionally, timely and effectively.

The intent of this plan is to establish a process and protocol to effectively manage an emergency situation (IWI) while continuing to manage the primary incident with as minimum of distraction as possible.

General Procedures

In the event of an emergency IWI, notification will be made thru the chain of command to the Operations Section Chief and/or Safety Officer. The Operations Section Chief (OSC) will assume control of the emergency and promptly assign on-scene responsibility to an appropriate Division/Group Supervisor. There will be an IWI IC identified and communicated to all personnel on each division. These individuals will be identified in the incident action plan. If OSC cannot be contacted, the highest qualified operations person or safety officer on scene will assume command of the emergency and take appropriate action.

The Incident Commander and Safety Officer will be notified promptly. The IC will ensure that all remaining command and general staff are notified.

All incident personnel will be instructed by the OSC or Safety Officer to clear the designated radio channel for "emergency traffic" related only to the emergency situation. If OSC or Safety Officer cannot be contacted, the highest qualified person on scene will broadcast "emergency radio traffic." In the event personnel are injured, when they have been loaded and being transported to the hospital or at an appropriate time, OSC or Safety Officer will announce on the radio that "emergency radio traffic" has been canceled and frequency cleared for standard incident communication.

Names of the injured or deceased individuals will not be transmitted on the radio.

To aid in an investigation, deceased individuals or their personal effects will not be moved except to accomplish rescue work or to protect the health and safety of others. The accident scene should be properly identified and protected.

Those directly involved will provide written documentation of their actions. An ICS 214 may be utilized for the initial documentation, but a subsequent narrative will be required.

An After Action Review will be conducted after each emergency incident within an incident to determine strengths and needed improvements.

Functional Assignments

When an emergency situation occurs, all Command & General Staff should quickly assess the situation. The following tasks should be accomplished as appropriate.

Incident Commander (IC)

1. Ensures implementation and accountability of the Incident within an Incident Emergency Action Plan.
2. Notifies the Agency Administrator and Geographic Coordination Center as needed.
3. Approves release of all information regarding the emergency.
4. Determines the need for a Serouis Accident Investigation Team (SAIT), if it is a fatality or entrapment on an USFS incident, USDA OIG must be notified by Agency Administrator, and will be the lead on this type of investigation.
5. Determines the need for a Critical Incident Stress Debriefing Team (CISD Team). The request will be routed through the Agency Administrator.
6. Determines which outside authorities need be contacted and initiates contact.
7. In the event a public evacuation is needed, the IC will inform the county sheriff and other officials as needed.

Safety Officer (SOF)

1. Coordinates with and supports the Division/Group Supervisor or person in charge at the scene of the emergency.
2. Initiates investigation and makes recommendation for additional investigation teams as needed.
3. Secures witnesses names and initial statements.
4. Obtains sketches and photos of emergency scene.
5. Obtains assistance from incident Law Enforcement in conducting the initial investigation.
6. Establishes contact with the local Emergency Operation Center prior to an emergency to provide the center with a copy of the Emergency Action Plan and to arrange for a communication link.
7. Completes the wild fire entrapment/fatality initial report (NFES 0859) as needed.

Information Officer (PIO)

1. Prepares and coordinates the release of information in accordance with agency policy and the direction and approval of the IC and Agency Administrator.
2. Provides photographic and video equipment and operators to assist with the investigation as requested.
3. Arranges briefings for incident personnel.

Operation Section Chief (OSC)

1. Implements the Incident Emergency Plan. Supervises the Division/Group Supervisor or person assigned to manage on-scene responsibility of the emergency incident.
2. Identifies nature of incident, number of people involved and their medical condition, location of emergency, and need for transportation and special needs (law enforcement, haz mat, etc).
3. Coordinates air operations as needed.
4. Ensures appropriate IWI organization is put in place to manage the emergency.

Logistics Section Chief (LSC)

1. Orders needed resources for the emergency as requested.
2. Provides ground transportation as needed.
3. Communicates with hospital and ambulance services. Refers to medical plan in place.
4. Coordinates security as necessary to protect accident scene.
5. Arranges for damaged vehicle removal as needed.
6. Provides EMT's to stabilize patients and to accompany injured to hospital.
7. Supervises camp evacuation as needed and ensures evacuation is done calmly and safely.
8. Provides law enforcement officers to assist the Safety Officer with investigation.
9. Provides emergency meal, potable water and supplies to personnel at the emergency site.
10. Communications will monitor the radio and ensure radio channel remain open for emergency communications only.
11. If a fatality has occurred, contacts the county coroner and sheriff's office.
12. Develops camp evacuation plan in advance of an emergency in conjunction with the Safety Officer and LSC.
13. Law Enforcement will :
 - a. Document all post incident activities
 - b. Locate and secure personal effects of injured personnel.

Planning Section Chief (PSC)

1. Develops camp evacuation plan in advance of an emergency in conjunction with the Safety Officer and LSC.
2. Provides resource information, maps and other data as requested and maintains documentation.

Finance Section Chief (FSC)

1. Coordinates with agency administrative staff.
2. Coordinates Compensation/Claims Unit response.

North Carolina Incident Management Team

DIVISION ASSIGNMENT LIST				1. Branch		2. Division/Group D/H/G	
3. Incident Name Table Rock				4. Operational Period Date: 11/18/2013 Time: 0700			
5. Operations Personnel							
ICT3		Bill Champion		Division Supervisors		Kelly Cagle	
Operations Chief		Browning/Eller		Safety Officers		David McFee	
6. Resources Assigned This Period							
Strike Team/Task Force/ Resource Designator	Leader	Last Shift	Number Persons	Trans Needed	Drop Off PT/Time	Pick Up PT/Time	
(E-24) NC ST Dozer T-2	TBD	11/29	2		0700	1900	
UTV	(O-19) K. Cagle	11/26	1		0700	1900	
Cherokee IHC	(O-5) C.Witkus	11/28	+9		0700	1900	
EMT	(O-62) G.Milner	11/29	1		0700	1900	
			1				
Security Specialist II	TBD		1		0700	1900	
7. Control Operations							
<ul style="list-style-type: none"> • Mop up and control Division D. • Prep. FDR 118 for future firing operations. 							
8. Special Instructions							
<ul style="list-style-type: none"> • Identify Fallers within the Division. • Maintain LCES • Medical emergencies need to contact Division Sup. And follow Medical Plan, as appropriate. • Utilize EMT between divisions, as needed. • If bucket work is needed, make request through the Div. Sup. • Each Division will identify an "Incident within an Incident" IC for that Division, being "_____" • Determine potential look-out locations. • Place Security II Specialist at DP3 for closure. 							
Function	Frequency	System	Channel	Function	Frequency	System	Channel
TAC 4	168.050		4				
Air to Ground	164.150		9				
Prepared By (Resource Unit Leader)			Approved By (Planning Sect. Ch.)			Date	Time
Dan Belanger			Dan Belanger			11/17/13	2130

DIVISION ASSIGNMENT LIST				1. Branch		2. Division/Group E	
3. Incident Name Table Rock				4. Operational Period Date: 11/18/2013 Time: 0700			
5. Operations Personnel							
ICT3 Operations Chief		Bill Champion Browning/Eller		Division Supervisors		David Nelson Keith Jenkins	
6. Resources Assigned This Period							
Strike Team/Task Force/ Resource Designator	Leader	Last Shift	Number Persons	Trans Needed	Drop Off PT/Time	Pick Up PT/Time	
EMT	(O-8) F. Abel	11/26	2		0700	1900	
(E-2) Engine T6 # 651	R. Knight	11/25	2		0700	1900	
(E-4) Engine T6 # 671	J. Owenby	11/25	3		0700	1900	
(C-1) Pat-Rick Type 2 IA	C. McLauchlan	12/1	+19		0700	1900	
TFLD	(O-83) T. Cruise	11/27	1		0700	1900	
7. Control Operations							
<ul style="list-style-type: none"> • Mop-Up and hold division break south to Outward Bound Camp. • Patrol and Mop-up Rose Creek drainage to FDR 210b. 							
8. Special Instructions							
<ul style="list-style-type: none"> • Provide structure protection prep., as needed. • Assist other divisions, as needed • Identify Fallers within the Division. • Maintain LCES • Medical emergencies need to contact Division Sup. And follow Medical Plan, as appropriate. • If bucket work is needed, make request through the Div. Sup. • Each Division will identify an "Incident within an Incident" IC for that Division being " _____ " 							
Function	Frequency	System	Channel	Function	Frequency	System	Channel
TAC 5	168.200		5				
Air to Ground	164.150		9				
Prepared By (Resource Unit Leader)		Approved By (Planning Sect. Ch.)		Date		Time	
Dan Belanger		Dan Belanger		11/17/13		2100	

ICS 204

NFES 1328

DIVISION ASSIGNMENT LIST				1. Branch		2. Division/Group F	
3. Incident Name Table Rock				4. Operational Period Date: 11/18/2013 Time: 0700			
5. Operations Personnel							
ICT3		Bill Champion		Division Supervisors		Dale Britton	
Operations Chief		Browning/Eller		Safety Officers		David McFee	
6. Resources Assigned This Period							
Strike Team/Task Force/ Resource Designator	Leader	Last Shift	Number Persons	Trans Needed	Drop Off PT/Time	Pick Up PT/Time	
READ	(O-105) A.Triplett	11/30	1		0700	1900	
TFLD	(E-2.1) C.Frisbee	11/25	1		0700	1900	
TFLD(t)	(O-55) F.Sutton	11/25	1		0700	1900	
Dozer D&D Motors T3	(E-1) S.Young	11/26	2		0700	1900	
HEQB	(O-84) P.Powell	11/29	1		0700	1900	
(C-2) OK-BIA T2IA	W.Kerwir	12/1	20		0700	1900	
(E-11)Savannah River T6 Eng #3	K. Aiken	11/27	+2		0700	1900	
(E-10) CS/NWR T6 Eng #E262	D.Odegard	11/27	+2		0700	1900	
E-23) Dozer T2 NC ST	C.Wilmoth	11/29	+2		0700	1900	
(E-6) Croatan T6 Engine #632	M. Teel	11/26	+2		0700	1900	
(E-5) Croatan T6 Engine # 631	A.Hill	11/26	+2		0700	1900	
(E-13) Oconee 681 T6 Engine	E. Burrel	11/27	+2		0700	1900	
(E-12)Blue Ridge NPS T6 Engine	B. Cherry	11/28	+2		0700	1900	
EMT	(O-63) C.Warwick	11/29	1		0700	1900	
7. Control Operations <ul style="list-style-type: none"> • Prep control line west of FDR 118 south to Linville River. 							
8. Special Instructions <ul style="list-style-type: none"> • Identify Fallers within the Division. • M.I.S.T. tactics, as appropriate • Maintain LCES • Medical emergencies need to contact Division Sup. And follow Medical Plan, as appropriate. • Each Division will identify an "Incident within an Incident" IC for that Division being "_____" • Utilize the READ, as appropriate • Oconee 681 Engine and Blue Ridge NPS Engine will be coming on shift at 0800 hrs (reassigned from night shift) 							
Function	Frequency	System	Channel	Function	Frequency	System	Channel
TAC 3	168.600		3				
Air to Ground	164.150		9				
Prepared By (Resource Unit Leader) Dan Belanger			Approved By (Planning Sect. Ch.) Dan Belanger			Date 11/17/13	Time 2100

DIVISION ASSIGNMENT LIST				1. Branch		2. Division/Group I.A.	
3. Incident Name Table Rock				4. Operational Period Date: 11/18/2013 Time: 0700			
5. Operations Personnel							
ICT3		Bill Champion		Division Supervisors		Greg Phillip	
Operations Chief		Browning/Eller		Safety Officers		David McFee	
6. Resources Assigned This Period							
Strike Team/Task Force/ Resource Designator		Leader	Last Shift	Number Persons	Trans Needed	Drop Off PT/Time	Pick Up PT/Time
(E-3) Appalachian 681 T6 Engine		Brian Smith	11/25	2	N	0700	1900
(E-15) Engine T6 #112		J.Boone	11/26	3	N	0700	1900
(E-7) Dozer NX5		J. Bishop	11/26	1			
7. Control Operations							
<ul style="list-style-type: none"> Provide I.A. support to the Grandfather R.D., as requested. 							
8. Special Instructions							
<ul style="list-style-type: none"> NX5 will be assisting/working in Division F, as needed Identify Fallers within the Division. Maintain LCES Medical emergencies need to contact Division Sup. And follow Medical Plan, as appropriate. If bucket work is needed, make request through the Div. Sup. Each Division will identify an "Incident within an Incident" IC for that Division being "_____" 							
Function	Frequency	System	Channel	Function	Frequency	System	Channel
Initial Attack	169.900		11				
Air to Ground	164.150		9				
Prepared By (Resource Unit Leader)			Approved By (Planning Sect. Ch.)			Date	Time
Dan Belanger			Dan Belanger			11/17/13	2100

AIR OPERATIONS SUMMARY

Prepared By: Dan Belanger

Prepared Date: 11/17/13

Prepared Time: 2000

1. NAME: Catawba Helibase	2. OPS PERIOD DATE: Monday, Nov. 18, 2013	START TIME: 0800	END TIME: 1900	SUNRISE: 0706	SUNSET: 1718
3. REMARKS (Safety Notes, Hazards, Air Operations Special Equipment, etc.): TFR is established over the Incident Mission Request thru DIVS to OPS Oak Hill Engine T3 assigned to ICP Helibase			4. READY ALERT AIRCRAFT MEDIVAC or IA- Either depending availability		
			5. TFR 3-9717 5500 AGL		

6. PERSONNEL	NAME	PHONE #	7. FREQUENCIES	AM	FM	8. FIXED-WING- Type/ Make-Model/ N#/ Base
AOBD			AIR/ AIR FW			AIR TANKERS-
ASGS			AIR/ AIR RW- FF		122.925	LEAD PLANES-
ATGS			AIR/ GROUND		164.150 TXRX	
ATGS	Clint Cross		COMMAND			Attached resources include Oak Hill
HLCO						Engine 4 (Dan) 828-448-0851
HEB2	Paul Borden	252-671-4576	DECK		163.100	Dive Boat (John) 828-334-4190
HEB1-T			TOLC		N/A	
						OTHER FW AIRCRAFT-

9. HELICOPTERS (Use Additional Sheets as Necessary)

FAA N#	TY	MAKE/ MODEL	BASE	AVAIL	START	Managers	FAA N#	T	MAKE/ MODEL	BASE	AVAIL	START	REMARKS
3HA	ITI	Bell 407	ICP-field	0800	0800	Jon Holleran							423-715-5428
8HX	II	Bell 205	ICP-field	0800	0800	Hans Egholm							585-278-4206
CH84	I	Vertol	Morganton Airport	0800	1000	Dave Moore Clint Cross							513-616-9192 404-909-2132 512-787-9081

10. TASK/ MISSION/ ASSIGNMENT (Type/ function includes: Air Tactical, Retardant, Recon, Personnel Transport, Bucket Operations, SAR, etc.)

TYPE/FUNCTION	NAME OF PERSONNEL OR CARGO (if applicable) or instructions for tactical aircraft	MISSION START	FLY FROM	FLY TO
		0800		
		0800		Initial Attack

FIRE BEHAVIOR FORECAST

FORECAST NUMBER: 5	TYPE OF FIRE: Wildfire
FIRE NAME: Table Rock	OPERATIONAL PERIOD: 11/18/13
DATE ISSUED: November 17th, 2013	TIME ISSUED: 1800
UNIT: NC-NCF	SIGNED: /s/ Andy Baker / Andy Baker FBAN

INPUTS

WEATHER SUMMARY:

****Dry and Windy Today ****

Today: Mostly sunny skies

Max Temp: 62 degrees Min RH: 34%

Winds: Northwest 7 to 15 mph with gusts to 20 mph in the afternoon

Mixing Height: max of 4700 feet AGL

Transport Winds: Northwest 23 to 31 mph

Smoke Dispersion: Good to Very Good by the afternoon

Tonight: Mostly Clear

Low Temp: 31 degrees Max RH: 89%

Winds: Northwest at 10 mph with gusts to 20 mph

Tuesday: Mostly Sunny. Max Temp: 50 degrees Min RH: 32% Winds: Light and Variable

Wednesday-Thursday: Partly Cloudy. Max Temp: mid 50's Min RH: 38% Winds: East to SE at 5 mph

OUTPUTS

FIRE BEHAVIOR

GENERAL:

- After the overnight precipitation (~0.3 inches), today will serve as an excellent drying day, especially for fine fuel types.
- Initial Attack fire behavior (for any potential new starts in hardwood leaf litter during peak burning period): ROS – 8 to 12 chains/hr. Flame Length – 2 to 4 feet

SPECIFIC:

All Divisions: see general forecast above

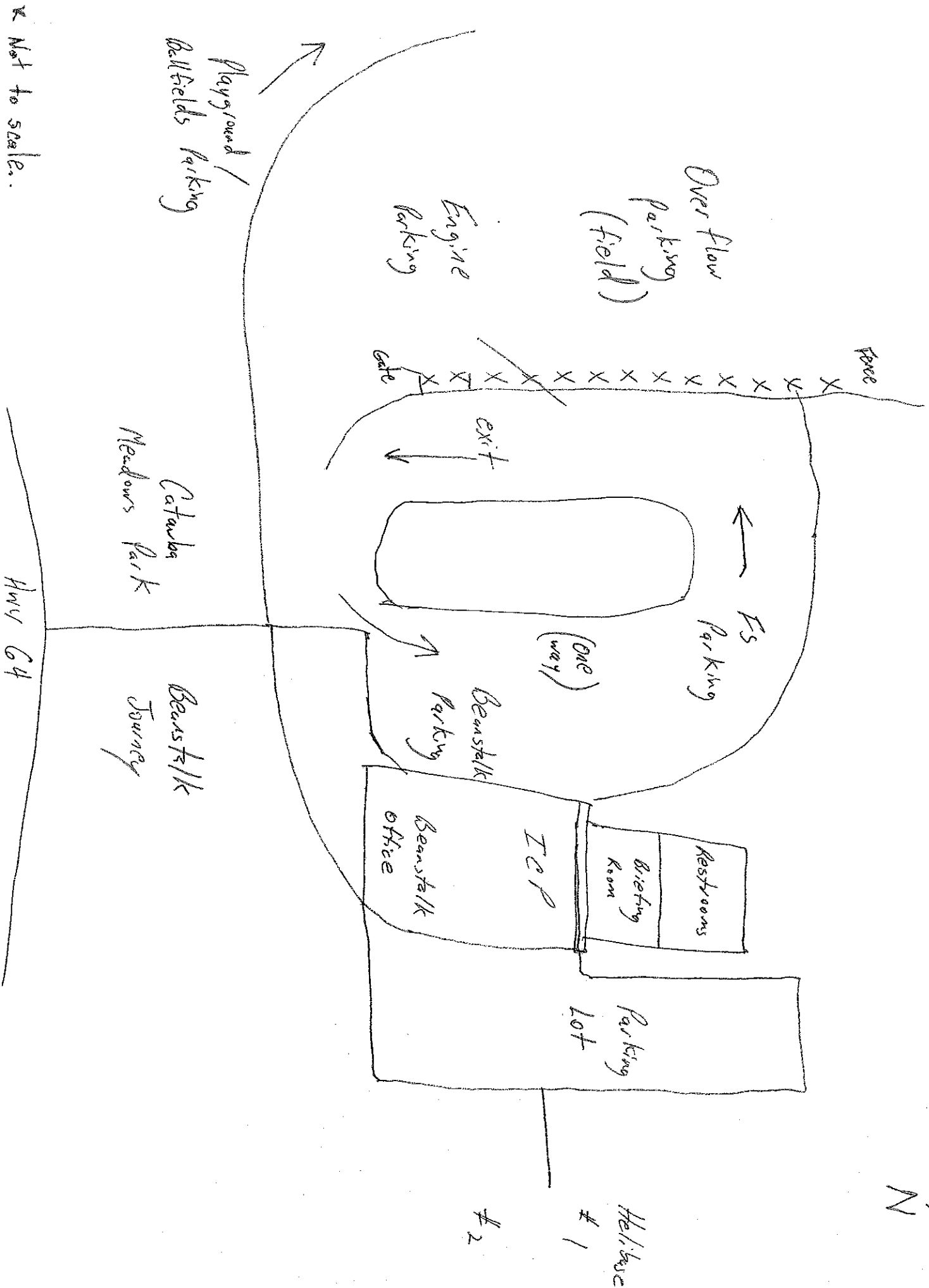
AIR OPERATIONS:

- Atmospheric instability will lead to afternoon mixing heights up to 4700 feet AGL with strong northwest transport winds.

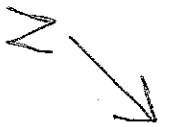
SAFETY

- Gusty winds have the potential to continue to topple fire-stressed trees

ICP Traffic Pattern



Not to scale.



INCIDENT RADIO COMMUNICATIONS PLAN

1. Incident Name
Table Rock

2. Date/Time Prepared
11/18/13 1800

3. Operational Period Date/Time
11/17/13 0700-1900

4. BASIC RADIO CHANNEL UTILIZATION

Radio Type/Cache	Channel	Function	Frequency/Tone	Wide/ Narrow	Assignment	Remarks
King NIFC	Ch 1	Tac 1	Rx/Tx 170.000	N	Division A	
King NIFC	CH 2	Tac 2	Rx/Tx 166.675	N	Division B	
King NIFC	CH 3	Tac 3	Rx/Tx 168.600	N	Division F and G	
King NIFC	CH 4	Tac 4	Rx/Tx 168.050	N	Division C, D and H	
King NIFC	CH 5	Tac 5	Rx/Tx 168.200	N	Division E	
King NIFC	CH 6	Clingman Repeater	Rx 168.725 Tone 103.5 Tx 172.225 Tone 136.5	N	Command	
King NIFC	CH 7	High Peak Repeater	Rx 168.725 Tone 103.5 Tx 172.225 Tone 103.5	N	Command	
King NIFC	CH 8	Grandmother Repeater	Rx 168.725 Tone 103.5 Tx 172.225 Tone 146.2	N	Command	
King NIFC	CH 9	Air to Ground 1	Rx/Tx 164.150	N	Primary	
King NIFC	CH 10	Air to Ground 2	Rx/Tx 167.425	N	Secondary	
King NIFC	CH 11	Initial Attack	Rx/Tx 169.900	N	IA	
King NIFC	Ch 12	Open		N		
King NIFC	Ch 13/16	Open		N		

5. Prepared By (Communications Unit)
David Smallman 828-778-2076

ICS 205

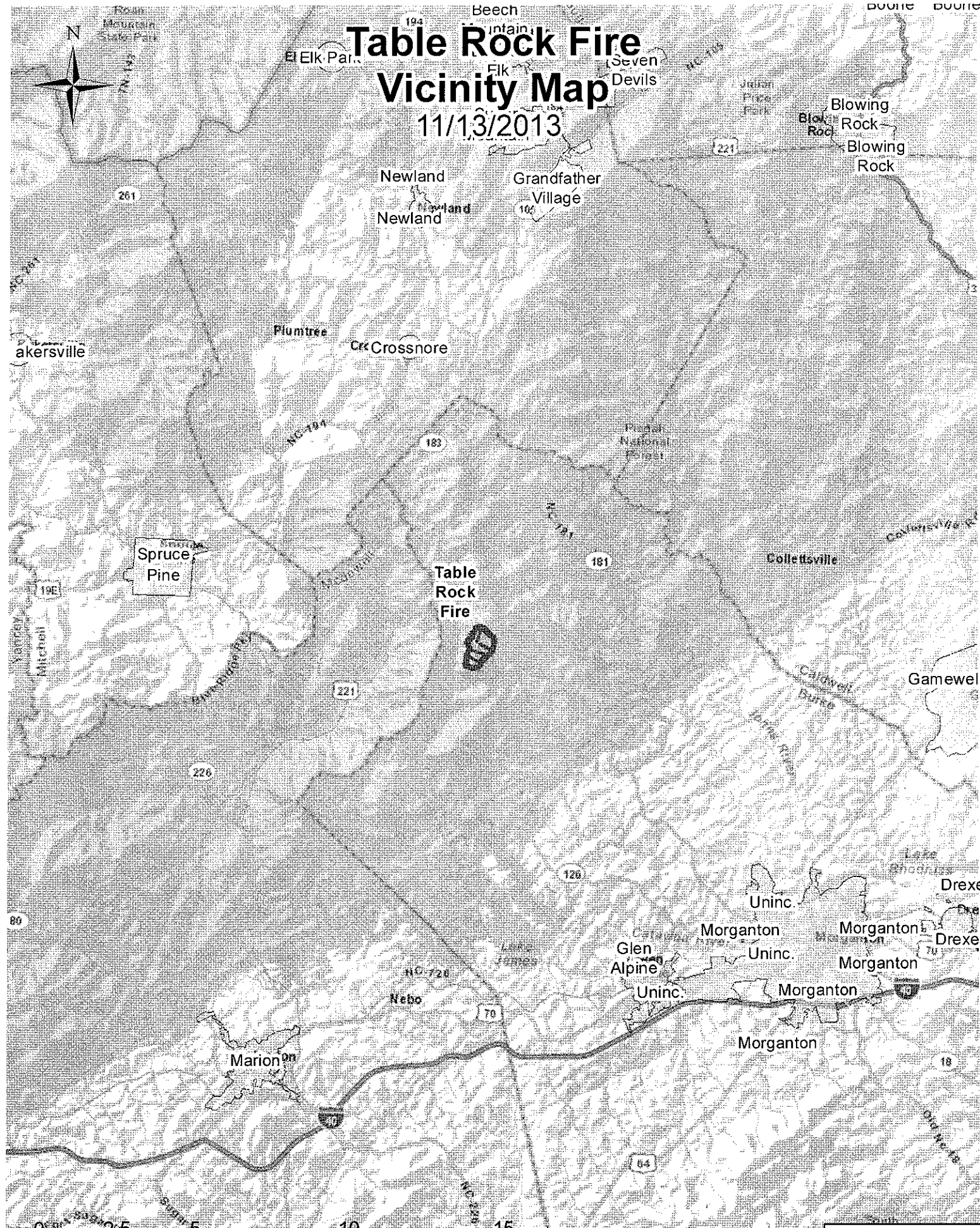
NFS 1330

	A	B	C
1	Table Rock Fire Cell Phone Numbers		
2			
3	<u>Name</u>	<u>Position</u>	<u>Number</u>
4	Champion, Bill	IC	828-360-4818
5	Little, Steve	IC (t)	828-778-2077
6	McFee, Dave	SOFR	828-208-9930
7	Larson, Nick	AADM	828-442-9768
8	Stull, Lauren	AADM	540-312-5012
9	Walker, Deborah	PIO	910-975-0803
10	Simon, Donald	PIO	910-975-1895
11	Browning, Brian	Operations	828-200-0102
12	Eller, Terry	Planning Ops	828-779-2081
13	Smith, Brian	DIV	828-284-7877
14	Paxton, Shane	DIVS A-B	865-414-6460
15	Frisbee, Chase	DIVS F-G	828-553-1055
16	Nelson, David	DIV E	252-571-2325
17	Phillip, Greg	DIVS I/A	828-460-0049
18	Cagle, Kelly	DIVS D-H	336-302-0343
19	Belanger, Dan	RESL	828-231-1529
20	Pullium, Eric	GIST	828-644-8966
21	Williams, Mike	SCKN	828-835-0094
22	Baker, Andy	FBAN	706-400-2150
23	Mayo, Jim	LOGC	828-712-7762
24	Snedeker, Rodney	FACL	828-216-2322
25	Smallman, Dave	ORDM	828-778-2076
26	Gay, Charlie	GSUL	828-273-2674
27	Roper, James	RCDM(t)	828-208-3782
28	King, Cathy	COST	828-284-0819
29	Lyda-Taylor, Kerri	PTRC	828-776-5989
30	Amaral, Bonnie	FSC2	828-779-2067
31	Roberts, John	PROC	828-337-9127
32	Walker, Mike	PA50	828-337-1312
33	Bently, Wes	HEB2	864-888-7553
34	Paul Borden	HEB2	252-671-4576
35	Rhea, Rusty	HEBM	828-273-4322
36	Egholm, Hans	HMGB	585-278-4206
37	Murphy, Jerry	HMGB	828-208-1768
38	Carothers, Bill	ABRO	828-273-4327
39	Able, Frank	EMTF	423-595-1578
40	Kessler, Kenneth	EMTF	318-729-6442
41	Crisp, Jason	Lead LEO	828-442-2470
42	Vines, Nick	Night SEC1	423-297-3181
43	Barnett, Steve	Night SEC1	252-671-5787
44			
45	ICP FAX		828-438-5287


MEDICAL PLAN	1. Incident Name Table Rock	2. Date Prepared 11/16/2013	3. Time Prepared 0700	4. Operational Period Day				
5. Incident Medical Aid Station								
Medical Aid Stations	Location			Paramedics				
				Yes	No			
Frank Abel 423-595-1578	See 204 for DIV assignment			<input checked="" type="checkbox"/>	<input type="checkbox"/>			
Jeremy Milner 720-227-5358	See 204 for DIV assignment			<input type="checkbox"/>	<input checked="" type="checkbox"/>			
Chris Warnock 231-920-8730	See 204 for DIV assignment			<input type="checkbox"/>	<input checked="" type="checkbox"/>			
				<input type="checkbox"/>	<input type="checkbox"/>			
				<input type="checkbox"/>	<input type="checkbox"/>			
6. Transportation								
A. Ambulance Services								
Name	Address		Phone	Paramedics				
				Yes	No			
Burke County EMS	Morganton, NC		911 828-437-1911	<input checked="" type="checkbox"/>	<input type="checkbox"/>			
				<input type="checkbox"/>	<input type="checkbox"/>			
<u>AIR AMBULANCES</u>								
MAMA - Asheville	Travel time 25-35 mins			<input checked="" type="checkbox"/>	<input type="checkbox"/>			
Wings Air Rescue – Johnson City, TN	Travel time 25-35 mins			<input checked="" type="checkbox"/>	<input type="checkbox"/>			
B. Incident Ambulances								
Name	Location			Paramedics				
				Yes	No			
Burke Co EMS	Fish Hatchery Road			<input checked="" type="checkbox"/>	<input type="checkbox"/>			
				<input type="checkbox"/>	<input type="checkbox"/>			
<u>TECHNICAL RESCUE</u>								
NC H.A.R.T. Technical Rescue	Accessed by 911			<input type="checkbox"/>	<input checked="" type="checkbox"/>			
				<input type="checkbox"/>	<input type="checkbox"/>			
7. Hospitals								
Name	Address	Travel Time		Phone	Helipad		Burn Center	
		Air	Grnd		Yes	No	Yes	No
Grace Hospital	Morganton, NC 35° 43.34' 81° 39.17'	10m	45m	828-659-5175	<input checked="" type="checkbox"/>	<input type="checkbox"/>	<input type="checkbox"/>	<input checked="" type="checkbox"/>
Johnson City Medical Center	Johnson City, TN 36° 18.449' 82° 23.31'	25m	90m	423-431-6561	<input checked="" type="checkbox"/>	<input type="checkbox"/>	<input type="checkbox"/>	<input checked="" type="checkbox"/>
Memorial Mission Hospital	Asheville, NC 35° 34.533' 82° 32.911'	25m	90m	828-213-1948	<input checked="" type="checkbox"/>	<input type="checkbox"/>	<input type="checkbox"/>	<input checked="" type="checkbox"/>
Wake Forest Baptist	Winston Salem, NC 36° 5.39' 80° 16.02'	50m	180m	336-713-9000	<input checked="" type="checkbox"/>	<input type="checkbox"/>	<input checked="" type="checkbox"/>	<input type="checkbox"/>
8. Medical Emergency Procedures								
See Reverse side for Line Emergency and Injury Reporting Procedures								
9. Prepared by Frank Abel (Medical Unit Leader)					10. Reviewed by Dave McFee (Safety Officer)			

Table Rock Fire Vicinity Map

11/13/2013



Legend

-  Table Rock Perimeter

Sources: Esri, DeLorme, NAVTEQ, USGS, Intermap, iPC, METI, Esri China (Hong Kong), Esri (Thailand), TomTom

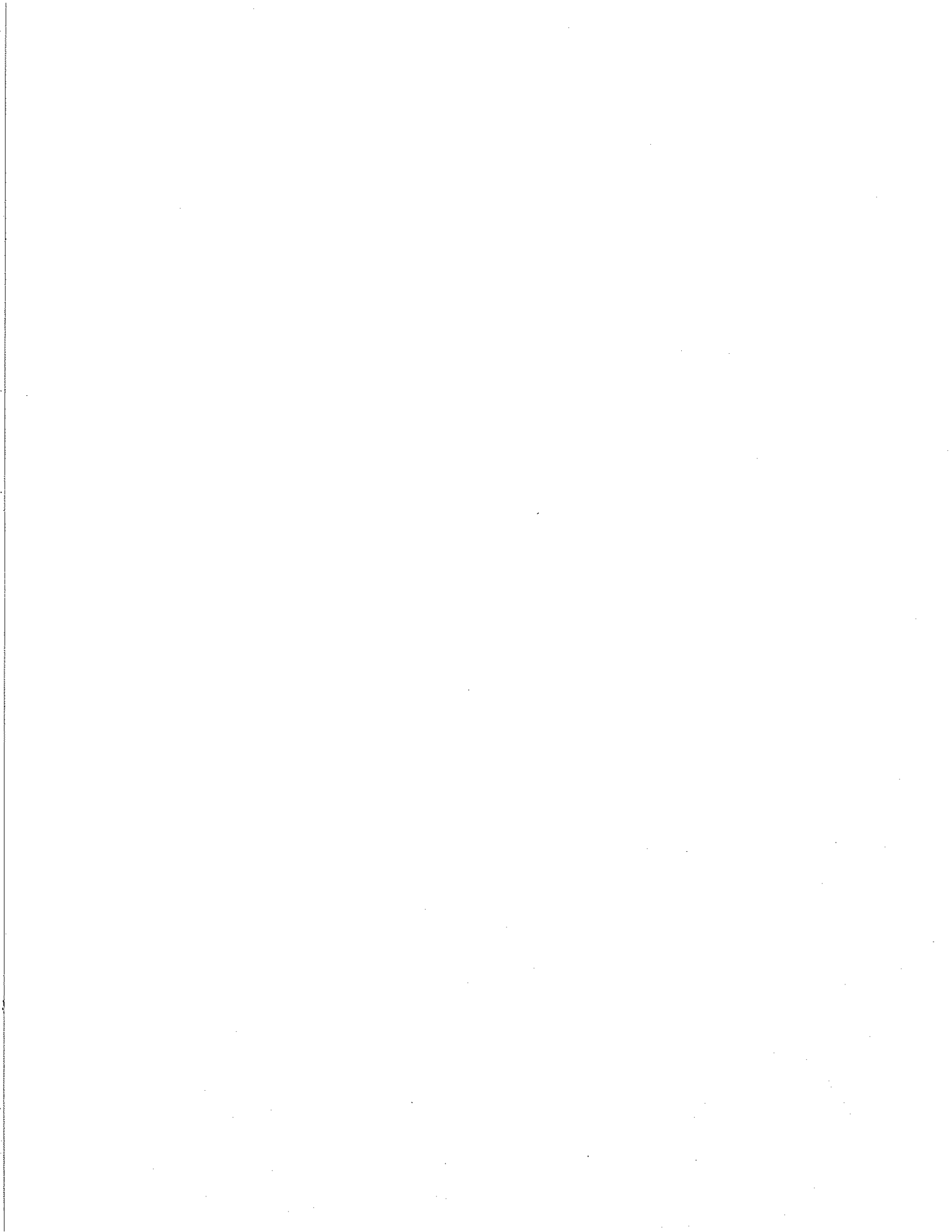
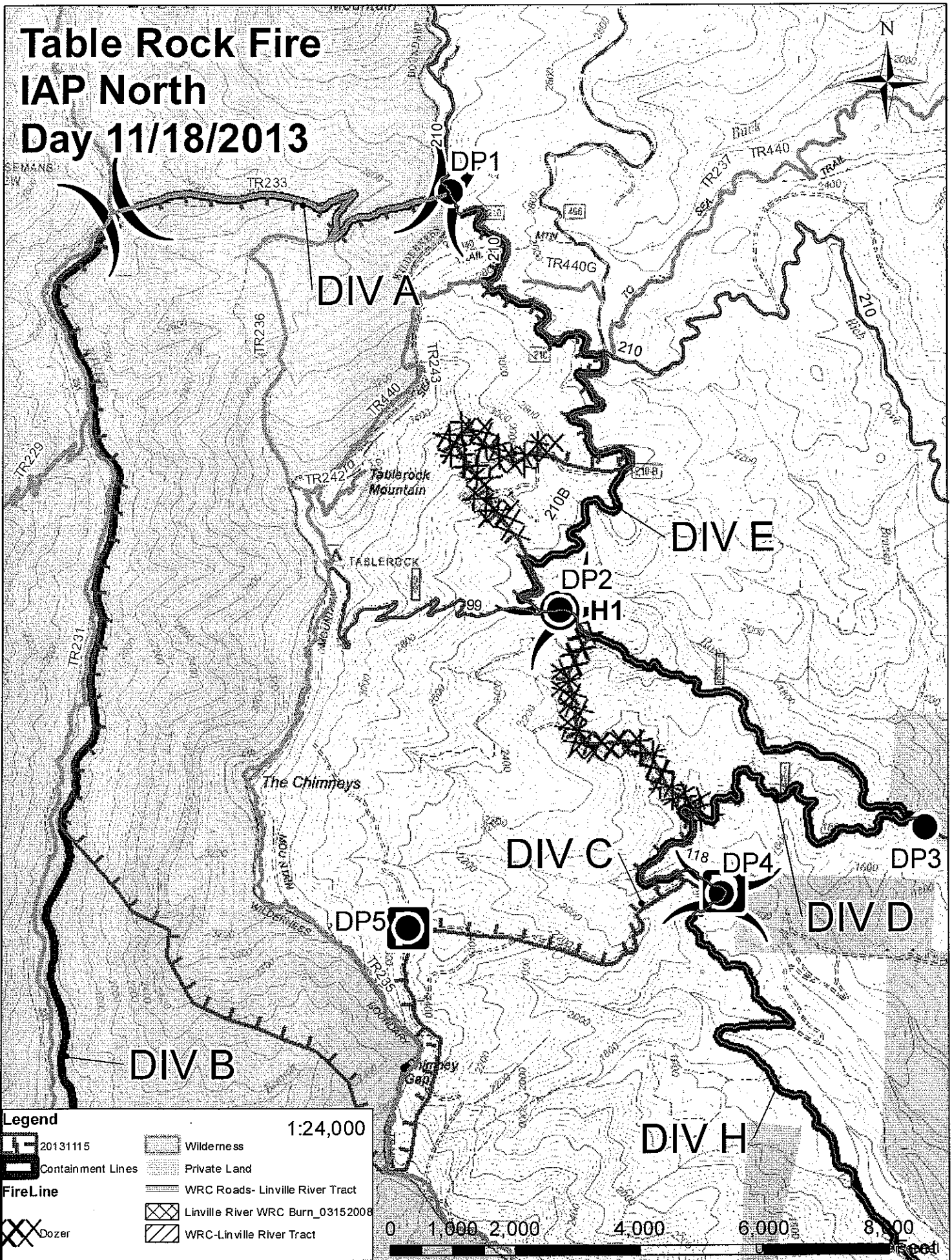


Table Rock Fire IAP North Day 11/18/2013

SEMANE
EIV

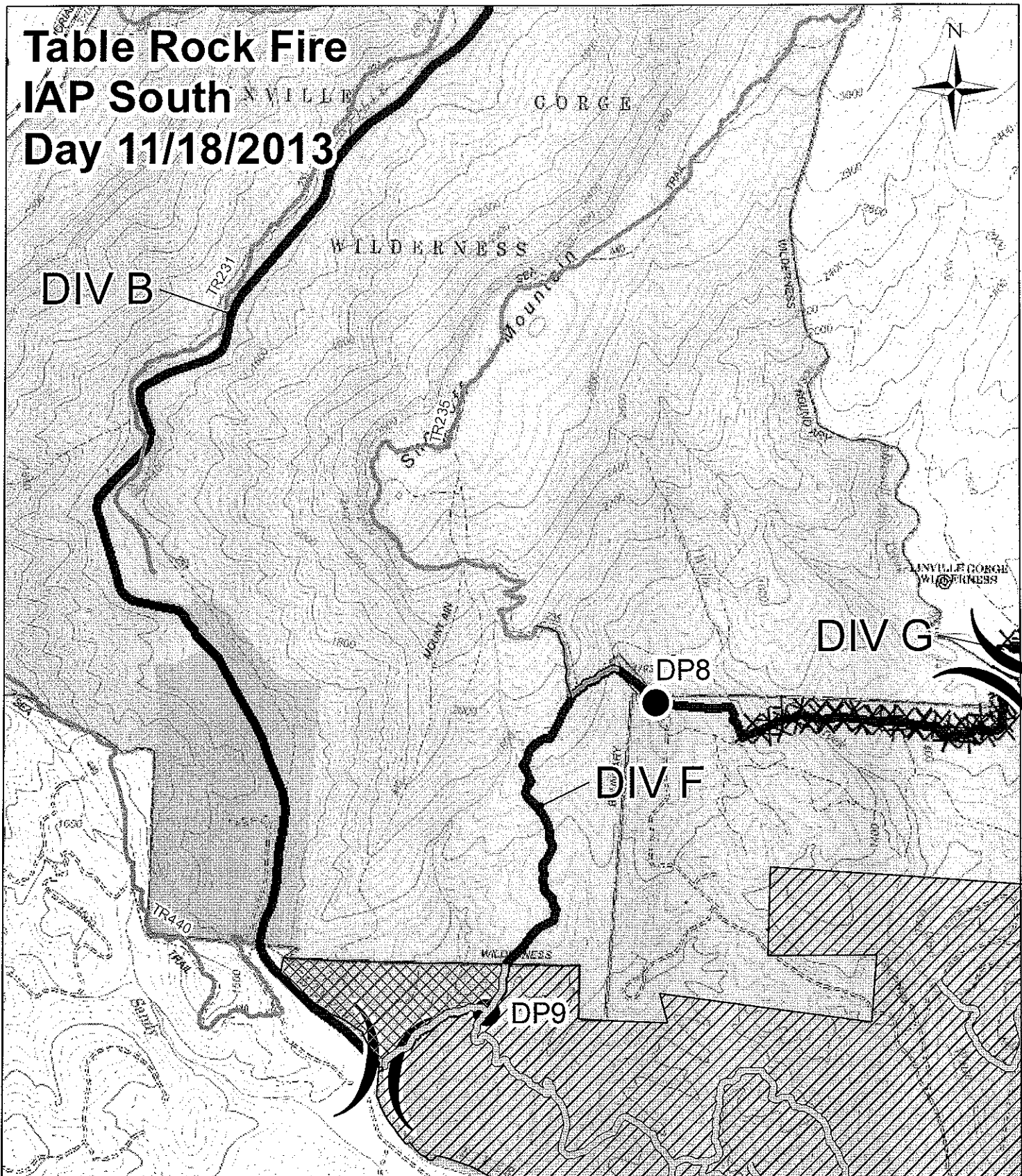


Legend 1:24,000

	20131115		Wilderness
	Containment Lines		Private Land
	FireLine		WRC Roads- Linville River Tract
	Dozer		Linville River WRC Burn_03152008
			WRC-Linville River Tract



Table Rock Fire IAP South Day 11/18/2013



Legend 1:24,000

	20131115		Wilderness
	Containment Lines		Private Land
FireLine			WRC Roads- Linville River Tract
	Dozer		Linville River WRC Burn_03152008
			WRC-Linville River Tract

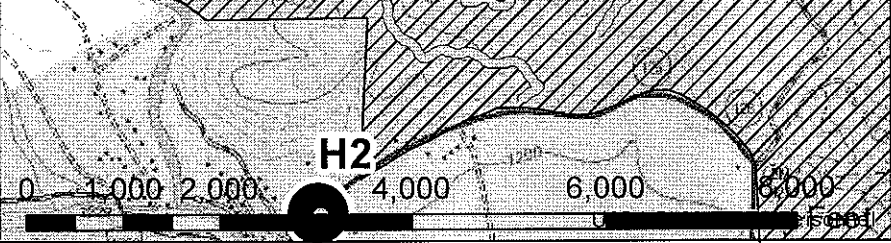


Table Rock Fire IAP Middle DIV D Day 11/18/2013



DIV C
DIV H

PI SGAH DP6

DIV G

DP7

NATIONAL

Legend 1:24,000

	20131115		Wilderness
	Containment Lines		Private Land
FireLine			WRC Roads - Linville River Tract
	Dozer		Linville River WRC Burn_03152008
			WRC-Linville River Tract

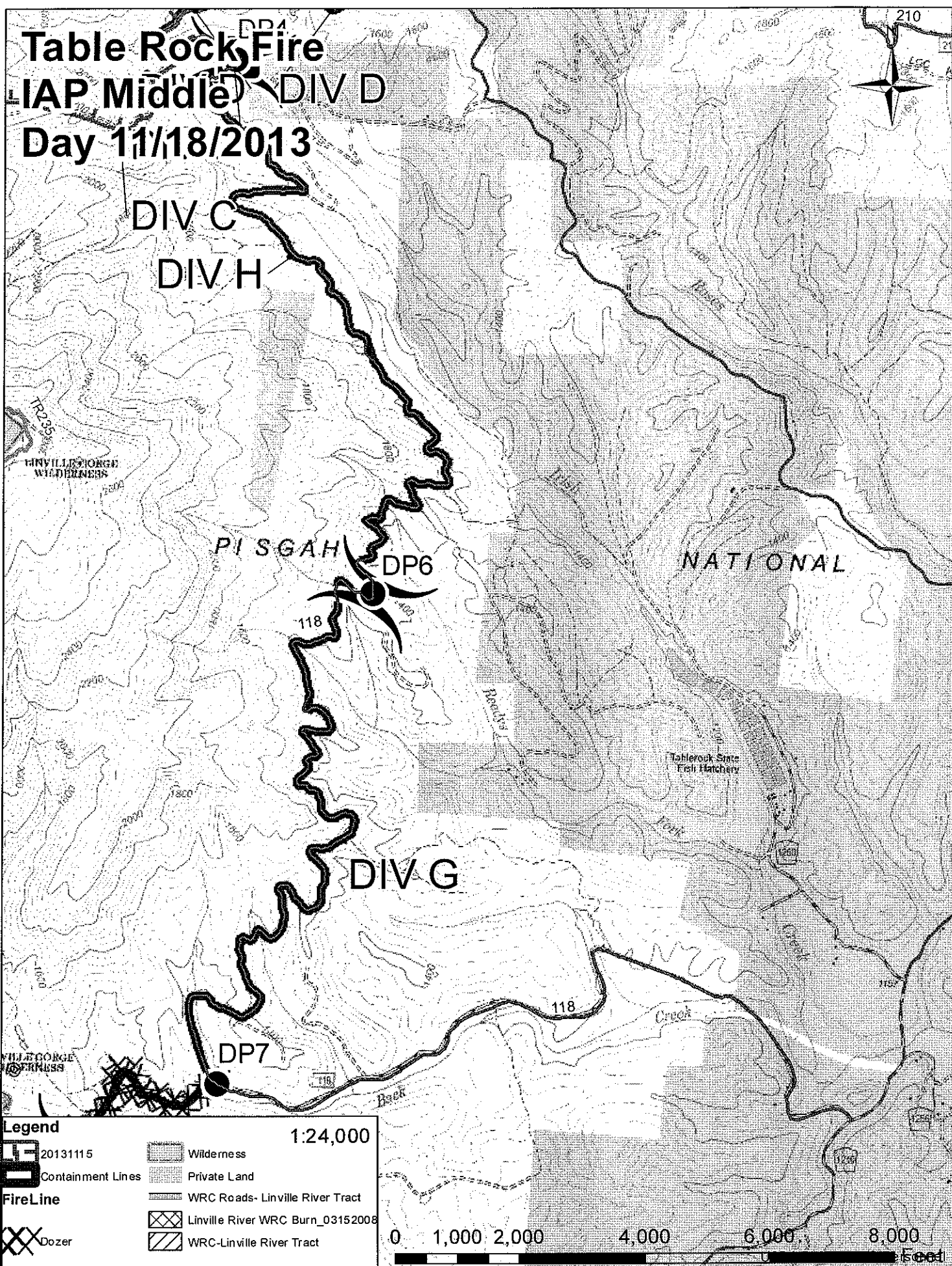


Table Rock Fire IAP East Day 11/18/2013

