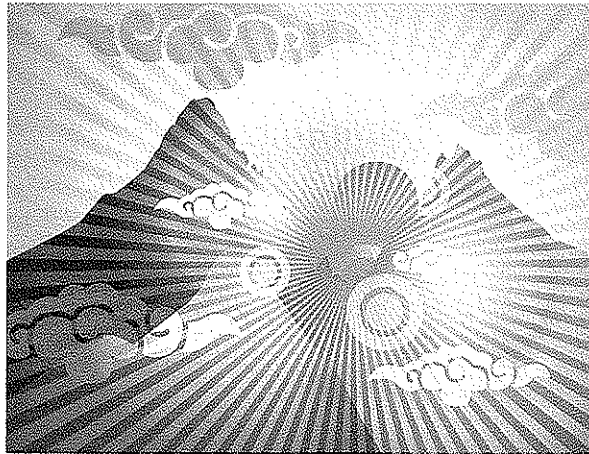


TABLE ROCK

NC-NCF-130066

P8H0Q5 (0811)

INCIDENT ACTION PLAN



TUESDAY
NOVEMBER 19, 2013
0700-1900

INCIDENT OBJECTIVES	1. Incident Name	2. Date Prepared	3. Time Prepared
	Table Rock	11/18/13	2000
4. Operational Period Tuesday, November 19, 0700 - 1900			
5. General Control Objectives For The Incident (Include Alternatives)			
<p>1. Provide for the highest level of firefighter and public safety by:</p> <ul style="list-style-type: none"> ➤ Implementation of LCES, and review of the Standard Fire Orders and 18 Situations. ➤ Provide an environment where all employees are respected. <p>2. Provide protection of the Outward Bound Base Camp.</p> <p>3. Minimize environmental or cultural concerns related to operational activities by utilizing M.I.S.T. guidelines.</p> <p>4. Keep abreast of, and communicate, changing weather and fire behavior conditions.</p> <p>5. Manage the incident in the most efficient and cost effective manner that is commensurate with values at risk.</p> <p>6. Keep the fire East of Linville River, South of Spence Ridge Trail (233), West of FDR 118 and west of the Wolfpit/Shortoff Trailhead, North of the Forest boundary and North of the control line established from previous N.C. Wildlife Resource Commission (NCWRC) prescribe burn located in the Northwest corner of NCWRC property.</p>			
6. Weather Forecast For Period			
See Attached Fire/Weather Forecast.			
7. General Safety Message			
See Attached Safety Message.			
8. ATTACHMENTS (X IF ATTACHED)			
<input checked="" type="checkbox"/> Organization List - ICS 203 <input checked="" type="checkbox"/> Medical Plan - ICS 206 <input checked="" type="checkbox"/> Safety Message <input checked="" type="checkbox"/> Division Assignment Lists - ICS 204 <input checked="" type="checkbox"/> Vicinity Map <input checked="" type="checkbox"/> Fire Weather <input checked="" type="checkbox"/> Communications Plan - ICS 205 <input checked="" type="checkbox"/> Incident Map <input checked="" type="checkbox"/> Air Operations Summary - ICS 220			
9. Prepared By (Planning Section Chief)		10. Approved By (Incident Commander)	
Dan Belanger		Bill Champion	

ORGANIZATION ASSIGNMENT LIST		9. Operations Section	
1. Incident Name Table Rock Fire		Chief	Brian Browning
		Planning/Ops	Terry Eller
		a.	
2. Date 11/18/2013		3. Time 2000	
		Branch Director	
		Deputy	
4. Operational Period Tuesday, November 19, 2013, 0700-1900		Division/Group	A Shane Paxton
		Division/Group	B Shane Paxton
5. Incident Commander and Staff		Division/Group	C
Incident Commander	Bill Champion	Division/Group	D/H/G Kelly Cagle
Deputy IC	Steve Little	Division/Group	E David Nelson
Safety Officer	McFee, Jenkins, Bunton, Mease	Division/Group	F Dale Brittain
Information Officer	Deborah Walker/Don Simon		
6. Agency Representatives		Division/Group	IA Brian Smith
Agency	Name	Division/Group	
		Division/Group	
Agency Administrator	Nick Larson	Division/Group	
Resource Advisor	Debbie Thomas	Division/Group	
Forest FMO	Riva Duncan	c.	
District FMO	Brian Browning	Branch Director	
7. Planning Section		Deputy	
Chief	Dan Belanger	Division/Group	
Deputy		Division/Group	
Resources Unit		Division/Group	
GIS	Eric Pullium	Division/Group	
Documentation Unit		Division/Group	
Demobilization Unit		d. Air Operations Branch	
Check-In	Michael Williams	ATGS	Clint Cross
Human Resources		Helibase Manager	Paul Borden
		Helicopter Manager	Hans Egholm
FBAN	Andrew Baker	Helicopter Manager	John Holleran
Technical Specialist		Helicopter Manager	Dave Moore
Technical Specialist		10. Finance Section	
Technical Specialist		Chief	Bonnie Amaral
8. Logistics Section		Deputy	Cathy King
Chief	Jim Mayo	Time Unit	Kerri Lyda-Taylor
Deputy		Procurement Unit	
Receiving & Distribution Mngr		Compensation/Claims Unit	
Facilities Unit	Charlie Gay	PA 10	Mike Walker
Ground Support Unit	Jerry Murphy		
Communications Unit		Prepared by (Resource Unit Leader) Dan Belanger	
Medical Unit	Frank Abel		
Security Unit	Jason Crisp		
Ordering Mngr	Dave Smallman		

HEALTH AND SAFETY MESSAGE

SAFETY starts with YOU

We are **ALL** accountable for **SAFE** behaviors

INCIDENT: Table Rock

PERIOD: Day Shift, November 19, 2013

Fire Order of the Day – *Be alert. Keep calm. Think clearly. Act decisively.*

Watch Out Situation – *Safety zones and escape routes not identified.*

Major Hazards and Risks:

- **Driving** – SEAT BELTS are mandatory! All occupants of the vehicle must have seat belts fastened while the vehicle is in motion. Drive defensively with lights on at all times and maintain safe following distance between vehicles, anticipate oncoming traffic. Use spotters when backing up especially with heavy equipment/engines. Beware of school zones traveling to incident and local public traffic through Gingercake Acres housing development, FDR# 118 South Table Rock road and NC Highway 105 and 126.
- **Steep Terrain and Precipitation** – steep slopes will continue to be slippery and difficult to traverse with fall leaf cast and the recent precipitation. Ensure appropriate footing and move slowly as you work across the terrain.
- **Working with Heavy Equipment** – When working around heavy equipment, stay atleast 100 feet in front or 50 feet behind the equipment. In timber, distance should be increased to 2.5 times the canopy height.
- **Hazard Tree Safety** – All firefighters should frequently survey their work area for potential hazard trees. Review Hazard Tree safety in IRPG pg. 20,21 to address situational awareness and hazard control.

REMEMBER – LCES: Lookouts, Communications, Escape Routes, and Safety Zones.

Maintain situational awareness – Human factor barriers to SA; low Experience level with local factors, Distraction from primary task, Fatigue, Stress reactions, Hazardous attitudes. Review pg. 5,6 in IRPG

SAFETY IS EVERYONE’S JOB, MAKE IT YOUR PRIORITY!

IMT Safety Officers: David McFee, Keith Jenkins, Mickey Bunton, Gary Mease

INCIDENT ACTION PLAN SAFETY ANALYSIS												
		Incident: Table Rock					Date Prepared: 11/18/13		Time Prepared: 1900		Operational Period: 11/18 (Day)	

Other Risk Analysis																		
Division/Group	Downhill Fireline	Underlying Fireline	Indirect Fireline	Mid-side Fireline	Dozer Operations	Anchor Points	Extreme Conditions (Spotting, Wind-driven)	Unburned Area	Snags and Rolling Material	Night Ops & Fatigue	LCES Mitigations	Hazard Materials	Transportation, 1 Hr +	Communications (Cell Phone Coverage)	Structure Protection	Multi-aircraft	Other Risk Mitigations	
A	X		X					X			1. Establish & Maintain LCES, report LCES ready to DWS 2. Look Up, Look Down, Look Around 3. Post Experienced Lookouts 4. Ensure Fireline is anchored 5. All FF's know current weather & fire lookouts 6. Flag hazard trees and snags, post 7. FOBS to develop weather watch system 8. Keep FF's informed of any changes in weather	X	1,14,16		X			1. Observe all traffic signals and speed limits 2. Reexplain structure protection 3. Brief personnel on structures hazards 4. Hazmat - See pg 11 in IRPG 5. Air Attack Coordinate with all resources 6. Clear drop zones 7. Situational Awareness 8. Watch out for complacency, supervisors monitor 9. All Personnel meet 2.1 work ration, team monitor 10. Provide clear concise briefings 11. Observe traffic signals and speed limits 12. Dozer ops maintain commo with HEQB 13. Use spotters when backing 14. Ensure traffic plan is in place, workable and followed 15. Abandon structures before safety is completed. 16. Observe all traffic signals and speed
	1,2,3,5		1,5,6,7,8					1,4,5,6,7,8,2,5,9										
B												X						
													1,14,16					
F	X		X	X	X	X	X	X				X		X				
	1,2,3,5		1,5,6,7,8	1,2,5,8	12	7		1,4,5,6,7,8,2,5,9				4,15	1,14,16	4,15	4,15			
D,H,G	X		X		X	X	X	X				X		X				
	1,2,3,5		1,5,6,7,8		12	7		1,4,5,6,7,8,2,5,9				4,15	1,14,16	4,15	4,15			
E	X				X	X		X				X		X				
	1,2,3,5				7			2,5,9				4,6,7	1,14,16	2,3,15	2,3,15			
IA	X	X	X	X	X	X	X	X				X		X				
	1,2,3,5	1,2,5	1,5,6,7	1,2,5,8	12	7		1,4,5,6,7,8,2,5,9				4,6,7	1,14,16	12	2,3,15	2,3,15		

INCIDENT WITHIN AN INCIDENT EMERGENCY ACTION PLAN

Introduction

An emergency such as a helicopter accident, firefighter entrapment or burnover, camp evacuations, vehicle accident, medical emergency or other unknown emergency condition could occur on any of the wild fires or all-risk incidents we may be assigned. This may result in serious injuries or fatalities, and periods of extreme stress. This is called an "incident within an incident (IWI)."

Assignments may be in remote or severely impacted locations that result in longer than normal response times for local emergency response personnel; therefore, the team is responsible for handling the situation professionally, timely and effectively.

The intent of this plan is to establish a process and protocol to effectively manage an emergency situation (IWI) while continuing to manage the primary incident with as minimum of distraction as possible.

General Procedures

In the event of an emergency IWI, notification will be made thru the chain of command to the Operations Section Chief and/or Safety Officer. The Operations Section Chief (OSC) will assume control of the emergency and promptly assign on-scene responsibility to an appropriate Division/Group Supervisor. There will be an IWI IC identified and communicated to all personnel on each division. These individuals will be identified in the incident action plan. If OSC cannot be contacted, the highest qualified operations person or safety officer on scene will assume command of the emergency and take appropriate action.

The Incident Commander and Safety Officer will be notified promptly. The IC will ensure that all remaining command and general staff are notified.

All incident personnel will be instructed by the OSC or Safety Officer to clear the designated radio channel for "emergency traffic" related only to the emergency situation. If OSC or Safety Officer cannot be contacted, the highest qualified person on scene will broadcast "emergency radio traffic." In the event personnel are injured, when they have been loaded and being transported to the hospital or at an appropriate time, OSC or Safety Officer will announce on the radio that "emergency radio traffic" has been canceled and frequency cleared for standard incident communication.

Names of the injured or deceased individuals will not be transmitted on the radio.

To aid in an investigation, deceased individuals or their personal effects will not be moved except to accomplish rescue work or to protect the health and safety of others. The accident scene should be properly identified and protected.

Those directly involved will provide written documentation of their actions. An ICS 214 may be utilized for the initial documentation, but a subsequent narrative will be required.

An After Action Review will be conducted after each emergency incident within an incident to determine strengths and needed improvements.

Functional Assignments

When an emergency situation occurs, all Command & General Staff should quickly assess the situation. The following tasks should be accomplished as appropriate.

Incident Commander (IC)

1. Ensures implementation and accountability of the Incident within an Incident Emergency Action Plan.
2. Notifies the Agency Administrator and Geographic Coordination Center as needed.
3. Approves release of all information regarding the emergency.
4. Determines the need for a Serouis Accident Investigation Team (SAIT), if it is a fatality or entrapment on an USFS incident, USDA OIG must be notified by Agency Administrator, and will be the lead on this type of investigation.
5. Determines the need for a Critical Incident Stress Debriefing Team (CISD Team). The request will be routed through the Agency Administrator.
6. Determines which outside authorities need be contacted and initiates contact.
7. In the event a public evacuation is needed, the IC will inform the county sheriff and other officials as needed.

Safety Officer (SOF)

1. Coordinates with and supports the Division/Group Supervisor or person in charge at the scene of the emergency.
2. Initiates investigation and makes recommendation for additional investigation teams as needed.
3. Secures witnesses names and initial statements.
4. Obtains sketches and photos of emergency scene.
5. Obtains assistance from incident Law Enforcement in conducting the initial investigation.
6. Establishes contact with the local Emergency Operation Center prior to an emergency to provide the center with a copy of the Emergency Action Plan and to arrange for a communication link.
7. Completes the wild fire entrapment/fatality initial report (NFES 0859) as needed.

Information Officer (PIO)

1. Prepares and coordinates the release of information in accordance with agency policy and the direction and approval of the IC and Agency Administrator.
2. Provides photographic and video equipment and operators to assist with the investigation as requested.
3. Arranges briefings for incident personnel.

Operation Section Chief (OSC)

1. Implements the Incident Emergency Plan. Supervises the Division/Group Supervisor or person assigned to manage on-scene responsibility of the emergency incident.
2. Identifies nature of incident, number of people involved and their medical condition, location of emergency, and need for transportation and special needs (law enforcement, haz mat, etc).
3. Coordinates air operations as needed.
4. Ensures appropriate IWI organization is put in place to manage the emergency.

Logistics Section Chief (LSC)

1. Orders needed resources for the emergency as requested.
2. Provides ground transportation as needed.
3. Communicates with hospital and ambulance services. Refers to medical plan in place.
4. Coordinates security as necessary to protect accident scene.
5. Arranges for damaged vehicle removal as needed.
6. Provides EMT's to stabilize patients and to accompany injured to hospital.
7. Supervises camp evacuation as needed and ensures evacuation is done calmly and safely.
8. Provides law enforcement officers to assist the Safety Officer with investigation.
9. Provides emergency meal, potable water and supplies to personnel at the emergency site.
10. Communications will monitor the radio and ensure radio channel remain open for emergency communications only.
11. If a fatality has occurred, contacts the county coroner and sheriff's office.
12. Develops camp evacuation plan in advance of an emergency in conjunction with the Safety Officer and LSC.
13. Law Enforcement will :
 - a. Document all post incident activities
 - b. Locate and secure personal effects of injured personnel.

Planning Section Chief (PSC)

1. Develops camp evacuation plan in advance of an emergency in conjunction with the Safety Officer and LSC.
2. Provides resource information, maps and other data as requested and maintains documentation.

Finance Section Chief (FSC)

1. Coordinates with agency administrative staff.
2. Coordinates Compensation/Claims Unit response.

North Carolina Incident Management Team

DIVISION ASSIGNMENT LIST				1. Branch		2. Division/Group A		
3. Incident Name Table Rock				4. Operational Period Date: 11/19/2013 Time: 0700				
5. Operations Personnel								
ICT3		Bill Champion		Division Supervisors		Shane Paxton		
Operations Chief		Browning/Eller		Safety Officers		Keith Jenkins		
6. Resources Assigned This Period								
Strike Team/Task Force/ Resource Designator		Leader		Last Shift	Number Persons	Trans Needed	Drop Off PT/Time	Pick Up PT/Time
(E-8) TNCNF Engine 662		B. Profit		11/26	3		0700	1900
(O-2) Smokey Mtn. Fuels Module		J. Black		11/26	6		0700	1900
(C-1) Pat-Rick Type 2 IA		G. Bennett		12/01	10		0700	1900
EMT		(O-8) F. Abel		11/20	1		0700	1900
7. Control Operations								
<ul style="list-style-type: none"> ● Grid and Mop-up 150' from the edge of black. 								
8. Special Instructions								
<ul style="list-style-type: none"> ● Identify Fallers within the Division. ● M.I.S.T. tactics, as appropriate ● Maintain LCES ● Medical emergencies need to contact Division Sup. And follow Medical Plan, as appropriate. ● If bucket work is needed, make request through the Div. Sup. ● Each Division will identify an "Incident within an Incident" IC for that Division, being " _____ " 								
Function		Frequency		System		Channel		
TAC 1		170.000				1		
Air to Ground		164.150				9		
Prepared By (Resource Unit Leader)				Approved By (Planning Sect. Ch.)		Date	Time	
Dan Belanger				Dan Belanger		11/18/13	2000	

DIVISION ASSIGNMENT LIST				1. Branch		2. Division/Group B									
3. Incident Name Table Rock				4. Operational Period Date: 11/19/2013 Time: 0700											
5. Operations Personnel															
ICT3		Bill Champion		Division Supervisors		Shane Paxton									
Operations Chief		Browning/Eller		Safety Officers		Keith Jenkins									
6. Resources Assigned This Period															
Strike Team/Task Force/ Resource Designator		Leader		Last Shift	Number Persons	Trans Needed	Drop Off PT/Time	Pick Up PT/Time							
FOBS		(O-57)Matt Eldridge		11/26	1		0700	1900							
7. Control Operations <ul style="list-style-type: none"> Maintain look-out for Divisions 															
8. Special Instructions															
Function		Frequency		System		Channel		Function		Frequency		System		Channel	
TAC 2		166.675				2									
Air to Ground		164.150				9									
Prepared By (Resource Unit Leader)				Approved By (Planning Sect. Ch.)				Date		Time					
Dan Belanger				Dan Belanger				11/18/13		2000					

DIVISION ASSIGNMENT LIST				1. Branch		2. Division/Group C	
3. Incident Name Table Rock				4. Operational Period Date: 11/19/2013 Time: 0700			
5. Operations Personnel							
ICT3		Bill Champion		Division Supervisors			
Operations Chief		Browning/Eller		Safety Officers			
6. Resources Assigned This Period							
Strike Team/Task Force/ Resource Designator		Leader		Demob Date	Number Persons	Trans Needed	Drop Off PT/Time
							Pick Up PT/Time
7. Control Operations							
UNASSIGNED							
8. Special Instructions							
Function		Frequency		System		Channel	
TAC 4		168.050				4	
Air to Ground		164.150				9	
Prepared By (Resource Unit Leader)				Approved By (Planning Sect. Ch.)		Date	Time
Dan Belanger				Dan Belanger		11/18/13	2000
ICS 204				NFES 1328			

DIVISION ASSIGNMENT LIST				1. Branch		2. Division/Group D/H/G	
3. Incident Name Table Rock				4. Operational Period Date: 11/19/2013 Time: 0700			
5. Operations Personnel							
ICT3		Bill Champion		Division Supervisors		Kelly Cagle	
Operations Chief		Browning/Eller		Safety Officers		Gary Mease	
6. Resources Assigned This Period							
Strike Team/Task Force/ Resource Designator	Leader	Last Shift	Number Persons	Trans Needed	Drop Off PT/Time	Pick Up PT/Time	
(E-24) NC ST Dozer T-2	TBD	11/29	2		0700	1900	
Cherokee IHC	(O-5) C.Witkus	11/25	1		0700	1900	
UTV	(O-19) K. Cagle	11/26	10		0700	1900	
EMT	(O-62) G.Milner	11/29	1		0700	1900	
7. Control Operations							
<ul style="list-style-type: none"> ● Mop up and control Division D. ● Prep. FDR 118 for future firing operations. 							
8. Special Instructions							
<ul style="list-style-type: none"> ● Burke Co. Ambulance will be located at Division D (H1). ● Identify Fallers within the Division. ● Maintain LCES ● Medical emergencies need to contact Division Sup. And follow Medical Plan, as appropriate. ● Utilize EMT between divisions, as needed. ● If bucket work is needed, make request through the Div. Sup. ● Each Division will identify an "Incident within an Incident" IC for that Division, being "_____" ● Determine potential look-out locations. 							
Function	Frequency	System	Channel	Function	Frequency	System	Channel
TAC 4	168.050		4				
Air to Ground	164.150		9				
Prepared By (Resource Unit Leader)			Approved By (Planning Sect. Ch.)		Date	Time	
Dan Belanger			Dan Belanger		11/18/13	2100	

ICS 204

NFES 1328

DIVISION ASSIGNMENT LIST		1. Branch		2. Division/Group E			
3. Incident Name Table Rock		4. Operational Period Date: 11/19/2013 Time: 0700					
5. Operations Personnel							
ICT3	Bill Champion	Division Supervisors		David Nelson			
Operations Chief	Browning/Eller	Safety Officers		Keith Jenkins			
6. Resources Assigned This Period							
Strike Team/Task Force/ Resource Designator	Leader	Last Shift	Number Persons	Trans Needed	Drop Off PT/Time	Pick Up PT/Time	
EMT	(O-8) F. Abel	11/26	2		0700	1900	
(E-15) Engine T6 #112	J. Boone	11/26	3		0700	1900	
(E-4) Engine T6 # 671	J. Owenby	11/25	3		0700	1900	
(C-1) Pat-Rick Type 2 IA	C. McLauchlan	12/01	10		0700	1900	
TFLD	(O-83) T. Cruise	11/27	1		0700	1900	
7. Control Operations							
<ul style="list-style-type: none"> ● Mop-Up and hold division break south to Outward Bound Camp. ● Patrol and Mop-up Rose Creek drainage to FDR 210b. 							
8. Special Instructions							
<ul style="list-style-type: none"> ● Provide structure protection prep., as needed. ● Identify Fallers within the Division. ● Maintain LCES ● Medical emergencies need to contact Division Sup. And follow Medical Plan, as appropriate. ● If bucket work is needed, make request through the Div. Sup. ● Each Division will identify an "Incident within an Incident" IC for that Division being "_____" 							
Function	Frequency	System	Channel	Function	Frequency	System	Channel
TAC 5	168.200		5				
Air to Ground	164.150		9				
Prepared By (Resource Unit Leader)		Approved By (Planning Sect. Ch.)		Date	Time		
Dan Belanger		Dan Belanger		11/18/13	2100		
ICS 204		NFES 1328					

DIVISION ASSIGNMENT LIST				1. Branch		2. Division/Group F	
3. Incident Name Table Rock				4. Operational Period Date: 11/19/2013 Time: 0700			
5. Operations Personnel							
ICT3		Bill Champion		Division Supervisors		Dale Brittain	
Operations Chief		Browning/Eller		Safety Officers		Mickey Bunton	
6. Resources Assigned This Period							
Strike Team/Task Force/ Resource Designator	Leader	Last Shift	Number Persons	Trans Needed	Drop Off PT/Time	Pick Up PT/Time	
READ	(O-105) A.Triplett	11/30	1		0700	1900	
TFLD	(E-2.1) C.Frisbee	11/25	1		0700	1900	
TFLD(t)	(O-55) F.Sutton	11/25	1		0700	1900	
Dozer D&D Motors T3	(E-1) S.Young	11/26	2		0700	1900	
HEQB(+)	(O-84) P.Powell	11/29	1		0700	1900	
(C-2) OK-BIA T2IA	W.Kerwir	12/01	20		0700	1900	
(E-11)Savannah River T6 Eng #3	K. Aiken	11/27	3		0700	1900	
(E-10) CS/NWR T6 Eng #E262	D.Odegard	11/27	3		0700	1900	
E-23) Dozer T2 NC ST	C.Wilmoth	11/29	3		0700	1900	
(E-6) Croatan T6 Engine #632	M. Teel	11/26	3		0700	1900	
(E-5) Croatan T6 Engine # 631	A.Hill	11/26	3		0700	1900	
(E-13) Oconee 681 T6 Engine	E. Burrel	11/27	3		0700	1900	
(E-12)Blue Ridge NPS T6 Engine	B. Cherry	11/27	3		0700	1900	
EMT	(O-64) K. Kessler	11/28	1		0700	1900	
EMT	(O-63) C.Warwnock	11/29	1		0700	1900	
7. Control Operations							
<ul style="list-style-type: none"> • Prep control line west of FDR 118 south to Linville River. 							
8. Special Instructions							
<ul style="list-style-type: none"> • Burke Co. Ambulance will be located at Wolf Pit (DP8) • Identify Fallers within the Division. • M.I.S.T. tactics, as appropriate • Maintain LCES • Medical emergencies need to contact Division Sup. And follow Medical Plan, as appropriate. • Each Division will identify an "Incident within an Incident" IC for that Division being " _____ " • Utilize the READ, as appropriate 							
Function	Frequency	System	Channel	Function	Frequency	System	Channel
TAC 3	168.600		3				
Air to Ground	164.150		9				
Prepared By (Resource Unit Leader)			Approved By (Planning Sect. Ch.)		Date		Time
Dan Belanger			Dan Belanger		11/18/13		2100

DIVISION ASSIGNMENT LIST			1. Branch		2. Division/Group I.A.		
3. Incident Name Table Rock			4. Operational Period Date: 11/19/2013 Time: 0700				
5. Operations Personnel							
ICT3	Bill Champion		Division Supervisors		Brian Smith		
Operations Chief	Browning/Eller		Safety Officers		David McFee		
6. Resources Assigned This Period							
Strike Team/Task Force/ Resource Designator	Leader	Last Shift	Number Persons	Trans Needed	Drop Off PT/Time	Pick Up PT/Time	
(E-3) Appalachian 681 T6 Engine	Brian Smith	11/25	2	N	0700	1900	
(E-2) Engine T6 # 651	R. Knight	11/25	2	N	0700	1900	
(E-7) Dozer NX5	J. Bishop	11/26	1		0700	1900	
7. Control Operations							
<ul style="list-style-type: none"> ● Provide I.A. support to the Grandfather R.D., as requested. 							
8. Special Instructions							
<ul style="list-style-type: none"> ● NX5 will be assisting/working in Division F, as needed ● Identify Fallers within the Division. ● Maintain LCES ● Medical emergencies need to contact Division Sup. And follow Medical Plan, as appropriate. ● If bucket work is needed, make request through the Div. Sup. ● Each Division will identify an "Incident within an Incident" IC for that Division being "_____" 							
Function	Frequency	System	Channel	Function	Frequency	System	Channel
Initial Attack	169.900		11				
Air to Ground	164.150		9				
Prepared By (Resource Unit Leader)			Approved By (Planning Sect. Ch.)		Date		Time
Dan Belanger			Dan Belanger		11/18/13		2100

AIR OPERATIONS SUMMARY

Prepared By: Dan Belanger

Prepared Date: 11/18/13

Prepared Time: 2000

1. NAME: Catawba Helibase	2. OPS PERIOD DATE: Monday, Nov. 19, 2013	START TIME: 0800	END TIME: 1900	SUNRISE: 0706	SUNSET: 1718
3. REMARKS (Safety Notes, Hazards, Air Operations Special Equipment, etc.): TFR is established over the Incident Mission Request thru DIVS to OPS Oak Hill Engine T3, and RHI water rescue craft assigned to Catawba Helibase					
4. READY ALERT AIRCRAFT MEDIVAC or IA- Either depending availability			5. TFR 3-0990 5500 AGL		

6. PERSONNEL	NAME	PHONE #	7. FREQUENCIES	AM	FM	8. FIXED-WING- Type/ Make-Model/ N#/ Base
AOBD			AIR/ AIR FW			AIRTANKERS-
ASGS			AIR/ AIR RW- FF		122.925	LEAD PLANES- 0
ATGS			AIR/ GROUND		164.150 TXRX	
ATGS	Clint Cross	512-787-9081	COMMAND			Attached resources include Oak Hill Engine 4 (Jimmy Winters 828-443-4292)
HLCO						
HEB2	Paul Borden	252-671-4576	DECK		163.100	Dive Boat (John) 828-334-4190
HEB1-T			TOLC		N/A	
						OTHER FW AIRCRAFT- A/A 7SH

9. HELICOPTERS (Use Additional Sheets as Necessary)

FAA N#	TY	MAKE/ MODEL	BASE	AVAIL	START	Managers	FAA N#	T Y	MAKE/ MODEL	BASE	AVAIL	START	REMARKS
3HA	III	Bell 407	ICP-field	0800	0800	Jon Holleran							423-715-5428
8HX	II	Bell 205	ICP-field	0800	0800	Hans Egholm							585-278-4206
7SH	FW	King Air	Morganton Airport	0800	1000	Clint Cross							512-787-9081

10. TASK/ MISSION/ ASSIGNMENT (Type/ function includes: Air Tactical, Retardant, Recon, Personnel Transport, Bucket Operations, SAR, etc.)			
TYPE/FUNCTION	NAME OF PERSONNEL OR CARGO (If applicable) or instructions for tactical aircraft	MISSION START	FLY FROM FLY TO
		0800	
		0800	Initial Attack

FIRE BEHAVIOR FORECAST

FORECAST NUMBER: 6	TYPE OF FIRE: Wildfire
FIRE NAME: Table Rock	OPERATIONAL PERIOD: 11/19/13
DATE ISSUED: November 18th, 2013	TIME ISSUED: 1800
UNIT: NC-NCF	SIGNED: /s/ Andy Baker / Andy Baker FBAN

INPUTS

WEATHER SUMMARY:

****Dry and Cooler Conditions Today ****

Today: Mostly sunny skies

Max Temp: 54 degrees Min RH: 28%

Winds: Northeast 5 to 8 mph...becoming light and variable

Mixing Height: max of 4400 feet AGL

Transport Winds: North 13 to 22 mph...becoming NE 8 to 12 in the afternoon

Atmospheric Dispersion Index: 40 - 60 (Good)

Tonight: Partly Cloudy

Low Temp: 30 degrees Max RH: 63%

Winds: Light and variable

Atmospheric Dispersion Index: Poor

Wednesday: Mostly Sunny. Max Temp: 51 degrees Min RH: 32% Winds: East at 5-8 mph

Thursday: Mostly Cloudy. Max Temp: 51 Min RH: 50% Winds: East at 5 mph

Friday - Saturday: Mostly Cloudy with Chance of Rain. Max Temp: 58 Min RH: 68% Winds: S to W at 5

OUTPUTS

FIRE BEHAVIOR

GENERAL:

- Continued smoldering of heavy fuels (100 and 1000 hour) where residual heat exists. As one hour and 10 hour fuels continue to dry out, re-ignition of uncontained portions of the fireline perimeter could occur today. Active fire behavior, if any, in regenerating areas with dead and down fuels (within previous wildfire disturbance areas) should be limited with ROS from 1 to 3 chains per hour and Flame Lengths of 1 to 3 feet.
- Initial Attack fire behavior (for any potential new starts in hardwood leaf litter during peak burning period): ROS - 8 to 12 chains/hr. Flame Length - 2 to 4 feet.

SPECIFIC:

All Divisions: see general forecast above

AIR OPERATIONS:

- Afternoon mixing heights up to 4400 feet AGL with northerly transport winds of 12-22 mph.

SAFETY

- Forecasted Fire Danger Ratings (from North Cove Pinnacle RAWS):
ERC - 25 BI - 33 (90th percentile)

HELIBASE

ICP
TRAFFIC PATTERN

BRIEFING
AREA
RESTROOMS

ICP

FIRE
SUPPORT
PARKING

← ONE WAY

ICP PARKING →

EXIT →

OVER
FLOW
PARKING

ENGINE
PARKING

GATE

© 2013 Google

Google

Imagery Date: 11/17/2011 55°54'19" N 81°42'15" W elev. 1013 ft. eye alt. 2

SANFORD DR

INCIDENT RADIO COMMUNICATIONS PLAN

1. Incident Name
Table Rock

2. Date/Time Prepared
11/18/13 1800

3. Operational Period Date/Time
11/19/13 0700-1900

4. BASIC RADIO CHANNEL UTILIZATION

Radio Type/Cache	Channel	Function	Frequency/Tone	Wide/Narrow	Assignment	Remarks
King NIFC	Ch 1	Tac 1	Rx/Tx 170.000	N	Division A	
King NIFC	CH 2	Tac 2	Rx/Tx 166.675	N	Division B	
King NIFC	CH 3	Tac 3	Rx/Tx 168.600	N	Division F	
King NIFC	CH 4	Tac 4	Rx/Tx 168.050	N	Division C, D, H, G	
King NIFC	CH 5	Tac 5	Rx/Tx 168.200	N	Division E	
King NIFC	CH 6	Clingman Repeater	Rx 168.725 Tone 103.5 Tx 172.225 Tone 136.5	N	Command	
King NIFC	CH 7	High Peak Repeater	Rx 168.725 Tone 103.5 Tx 172.225 Tone 103.5	N	Command	
King NIFC	CH 8	Grandmother Repeater	Rx 168.725 Tone 103.5 Tx 172.225 Tone 146.2	N	Command	
King NIFC	CH 9	Air to Ground 1	Rx/Tx 164.150	N	Primary	
King NIFC	CH 10	Air to Ground 2	Rx/Tx 167.425	N	Secondary	
King NIFC	CH 11	Initial Attack	Rx/Tx 169.900	N	IA	
King NIFC	Ch 12	Open		N		
King NIFC	Ch 13/16	Open		N		

5. Prepared By (Communications Unit)
David Smallman 828-778-2076

	A	B	C
1	Table Rock Fire Cell Phone Numbers		
2			
3	<u>Name</u>	<u>Position</u>	<u>Number</u>
4	Champion, Bill	IC	828-360-4818
5	Little, Steve	IC (t)	828-778-2077
6	McFee, Dave	SOFR	828-208-9930
7	Larson, Nick	AADM	828-442-9768
8	Stull, Lauren	AADM	540-312-5012
9	Walker, Deborah	PIO	910-975-0803
10	Simon, Donald	PIO	910-975-1895
11	Browning, Brian	Operations	828-200-0102
12	Eller, Terry	Planning Ops	828-779-2081
13	Smith, Brian	DIV	828-284-7877
14	Paxton, Shane	DIVS A-B	865-414-6460
15	Frisbee, Chase	DIVS F-G	828-553-1055
16	Nelson, David	DIV E	252-571-2325
17	Phillip, Greg	DIVS I/A	828-460-0049
18	Cagle, Kelly	DIVS D-H	336-302-0343
19	Belanger, Dan	RESL	828-231-1529
20	Pullium, Eric	GIST	828-644-8966
21	Williams, Mike	SCKN	828-835-0094
22	Baker, Andy	FBAN	706-400-2150
23	Mayo, Jim	LOGC	828-712-7762
24	Snedeker, Rodney	FACL	828-216-2322
25	Smallman, Dave	ORDM	828-778-2076
26	Gay, Charlie	GSUL	828-273-2674
27	Roper, James	RCDM(t)	828-208-3782
28	King, Cathy	COST	828-284-0819
29	Lyda-Taylor, Kerri	PTRC	828-776-5989
30	Amaral, Bonnie	FSC2	828-779-2067
31	Roberts, John	PROC	828-337-9127
32	Walker, Mike	PA50	828-337-1312
33	Bently, Wes	HEB2	864-888-7553
34	Paul Borden	HEB2	252-671-4576
35	Rhea, Rusty	HEBM	828-273-4322
36	Egholm, Hans	HMGB	585-278-4206
37	Murphy, Jerry	HMGB	828-208-1768
38	Carothers, Bill	ABRO	828-273-4327
39	Able, Frank	EMTF	423-595-1578
40	Kessler, Kenneth	EMTF	318-729-6442
41	Crisp, Jason	Lead LEO	828-442-2470
42	Vines, Nick	Night SEC1	423-297-3181
43	Barnett, Steve	Night SEC1	252-671-5787
44			
45	ICP FAX		828-438-5287

MEDICAL PLAN	1. Incident Name	2. Date Prepared	3. Time Prepared	4. Operational Period
	Table Rock	11/16/2013	0700	Day

5. Incident Medical Aid Station

Medical Aid Stations	Location	Paramedics	
		Yes	No
Frank Abel 423-595-1578	See 204 for DIV assignment	<input checked="" type="checkbox"/>	<input type="checkbox"/>
Jeremy Milner 720-227-5358	See 204 for DIV assignment	<input type="checkbox"/>	<input checked="" type="checkbox"/>
Chris Warnock 231-920-8730	See 204 for DIV assignment	<input type="checkbox"/>	<input checked="" type="checkbox"/>
		<input type="checkbox"/>	<input type="checkbox"/>
		<input type="checkbox"/>	<input type="checkbox"/>

6. Transportation

A. Ambulance Services

Name	Address	Phone	Paramedics	
			Yes	No
Burke County EMS	Morganton, NC	911 828-437-1911	<input checked="" type="checkbox"/>	<input type="checkbox"/>
			<input type="checkbox"/>	<input type="checkbox"/>
	<u>AIR AMBULANCES</u>		<input type="checkbox"/>	<input type="checkbox"/>
MAMA - Asheville	Travel time 25-35 mins		<input checked="" type="checkbox"/>	<input type="checkbox"/>
Wings Air Rescue – Johnson City, TN	Travel time 25-35 mins		<input checked="" type="checkbox"/>	<input type="checkbox"/>

B. Incident Ambulances

Name	Location	Paramedics	
		Yes	No
Burke Co EMS	Fish Hatchery Road	<input checked="" type="checkbox"/>	<input type="checkbox"/>
		<input type="checkbox"/>	<input type="checkbox"/>
	<u>TECHNICAL RESCUE</u>	<input type="checkbox"/>	<input type="checkbox"/>
NC H.A.R.T. Technical Rescue	Accessed by 911	<input type="checkbox"/>	<input checked="" type="checkbox"/>
		<input type="checkbox"/>	<input type="checkbox"/>

7. Hospitals

Name	Address	Travel Time		Phone	Helipad		Burn Center	
		Air	Grnd		Yes	No	Yes	No
Grace Hospital	Morganton, NC 35° 43.34' 81° 39.17'	10m	45m	828-659-5175	<input checked="" type="checkbox"/>	<input type="checkbox"/>	<input type="checkbox"/>	<input checked="" type="checkbox"/>
Johnson City Medical Center	Johnson City, TN 36° 18.449' 82° 23.31'	25m	90m	423-431-6561	<input checked="" type="checkbox"/>	<input type="checkbox"/>	<input type="checkbox"/>	<input checked="" type="checkbox"/>
Memorial Mission Hospital	Asheville, NC 35° 34.533' 82° 32.911'	25m	90m	828-213-1948	<input checked="" type="checkbox"/>	<input type="checkbox"/>	<input type="checkbox"/>	<input checked="" type="checkbox"/>
Wake Forest Baptist	Winston Salem, NC 36° 5.39' 80° 16.02'	50m	180m	336-713-9000	<input checked="" type="checkbox"/>	<input type="checkbox"/>	<input checked="" type="checkbox"/>	<input type="checkbox"/>

8. Medical Emergency Procedures

See Reverse side for Line Emergency and Injury Reporting Procedures

9. Prepared by Frank Abel (Medical Unit Leader)	10. Reviewed by Dave McFee (Safety Officer)
--	--

Line Emergency

1. DIVS may designate an IC for an Incident Within an Incident.
2. Crew Boss contacts DIVS with description of injury or illness.
3. DIVS contacts closest line EMT and Communications Unit.
 - a. DIVS should provide information about the nature and extent of injury or illness. (see injury reporting procedures below)
 - b. If serious medical emergency exists, Communications will clear the channel for essential radio traffic only.
4. Medical Unit will coordinate dispatching of additional line EMTs and incident ambulance.
5. Communications and OPS will coordinate dispatch of additional ground or air ambulances as needed.
 - a. Incident helicopters will be used for medivac if appropriate.
6. If air ambulance is used, Communications should notify Air Operations Director and Helibase.

Injury Reporting Procedures

Nature of Injury: _____

Location of Patient: _____

Transportation Request By: Air: _____ Ground: _____

Point of Pick up: _____

Lat: _____ Long: _____

Patient Unit ID: _____

Is EMT with Patient: Yes: _____ No: _____

Age: _____

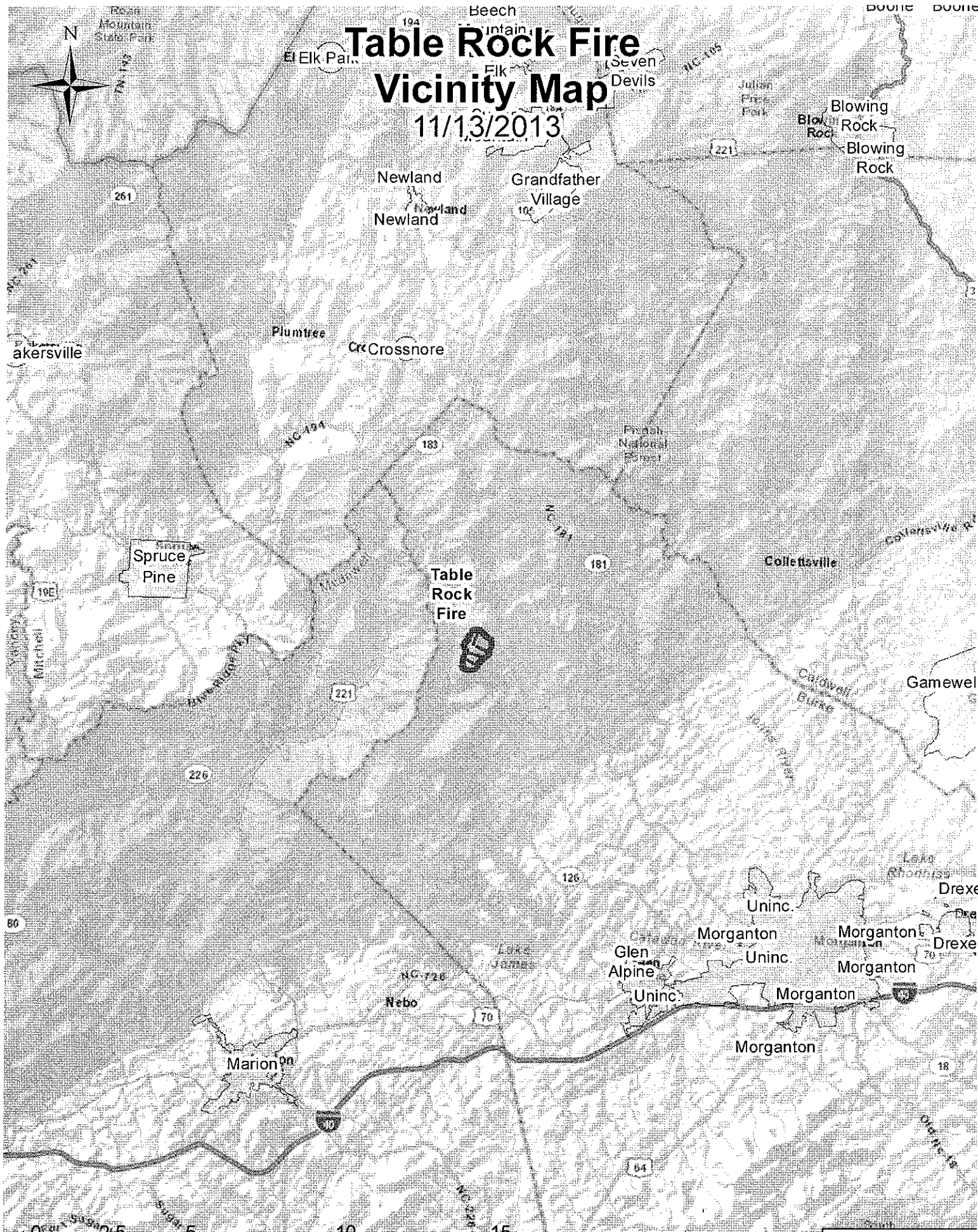
Sex: Male: _____ Female: _____

Additional Info:

**All EMERGENCIES: -- Secure the area and identify witness for later investigation.
Keep an accurate log of events.**

Table Rock Fire Vicinity Map

11/13/2013



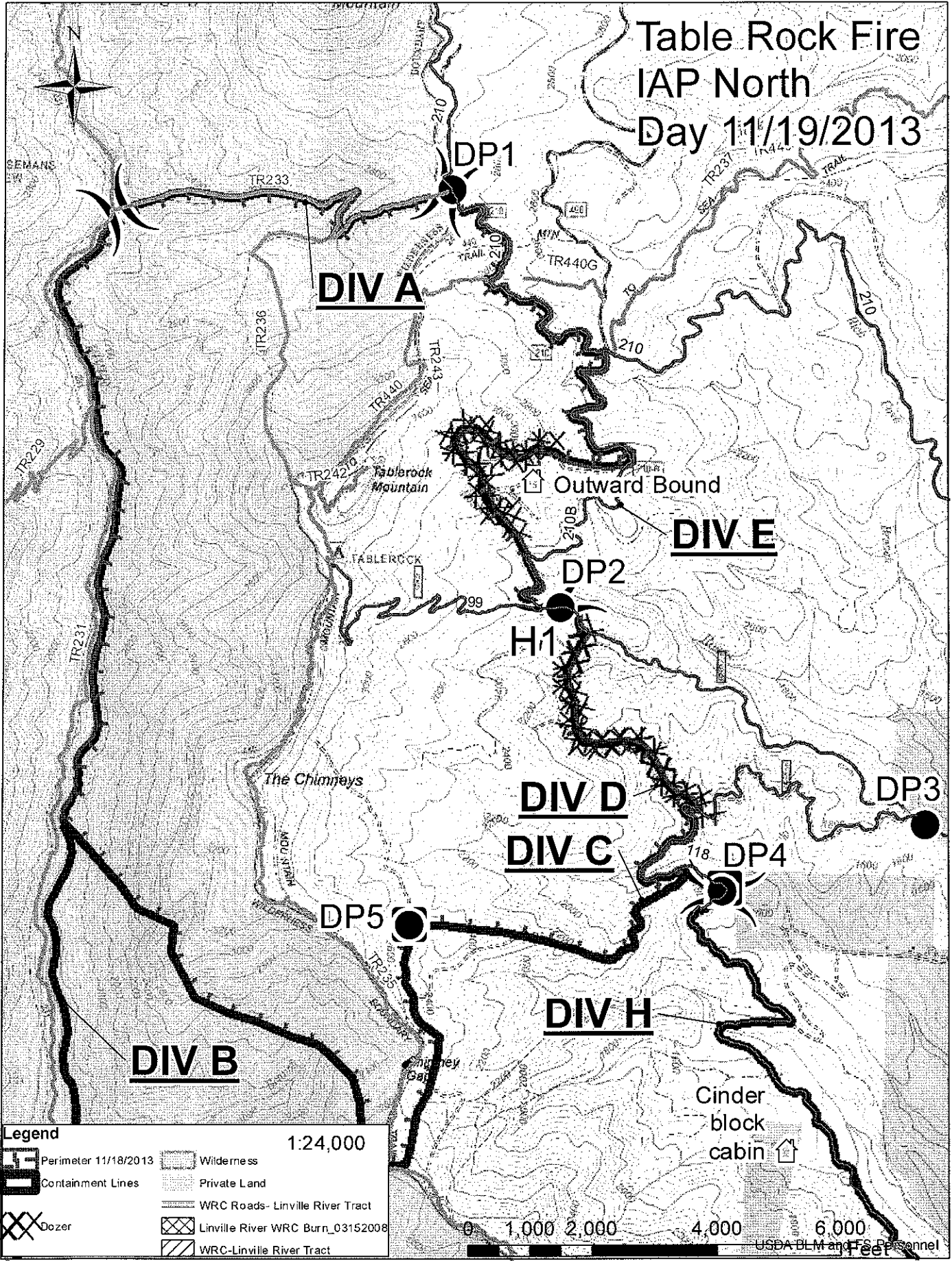
Legend

-  Table Rock Perimeter

Sources: Esri, DeLorme, NAVTEQ, USGS, Intermap, iP, METI, Esri China (Hong Kong), Esri (Thailand), TomTom

Page Left Blank Intentionally

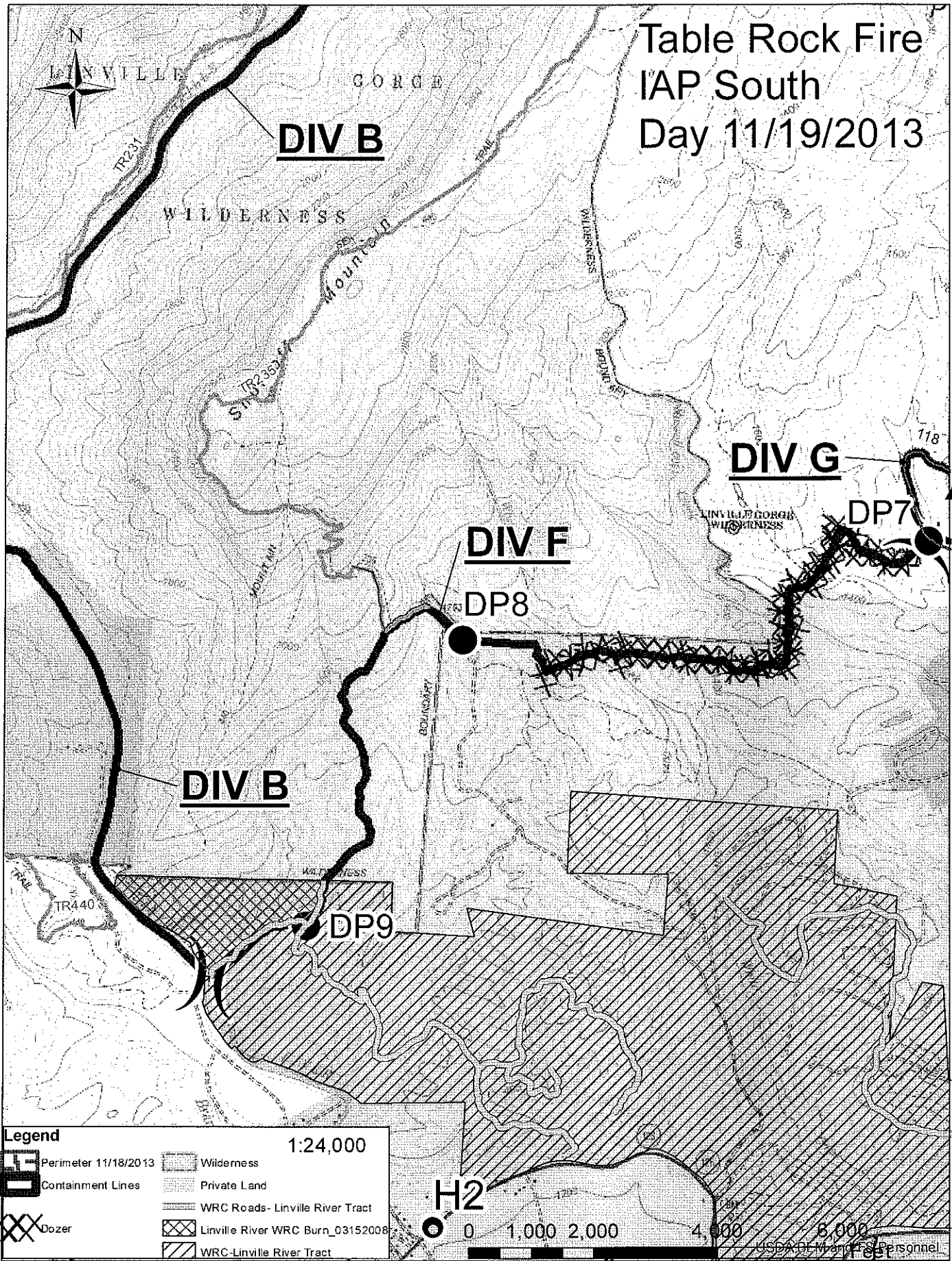
Table Rock Fire IAP North Day 11/19/2013



Legend 1:24,000

	Perimeter 11/18/2013		Wilderness
	Containment Lines		Private Land
	Dozer		WRC Roads- Linville River Tract
			Linville River WRC Burn_03152008
			WRC-Linville River Tract

Table Rock Fire IAP South Day 11/19/2013



Legend 1:24,000

	Perimeter 11/18/2013		Wilderness
	Containment Lines		Private Land
	Dozer		WRC Roads - Linville River Tract
			Linville River WRC Burn_03152008
			WRC-Linville River Tract

H2

0 1,000 2,000 4,000 6,000

USDA-BLM and FWS Personnel

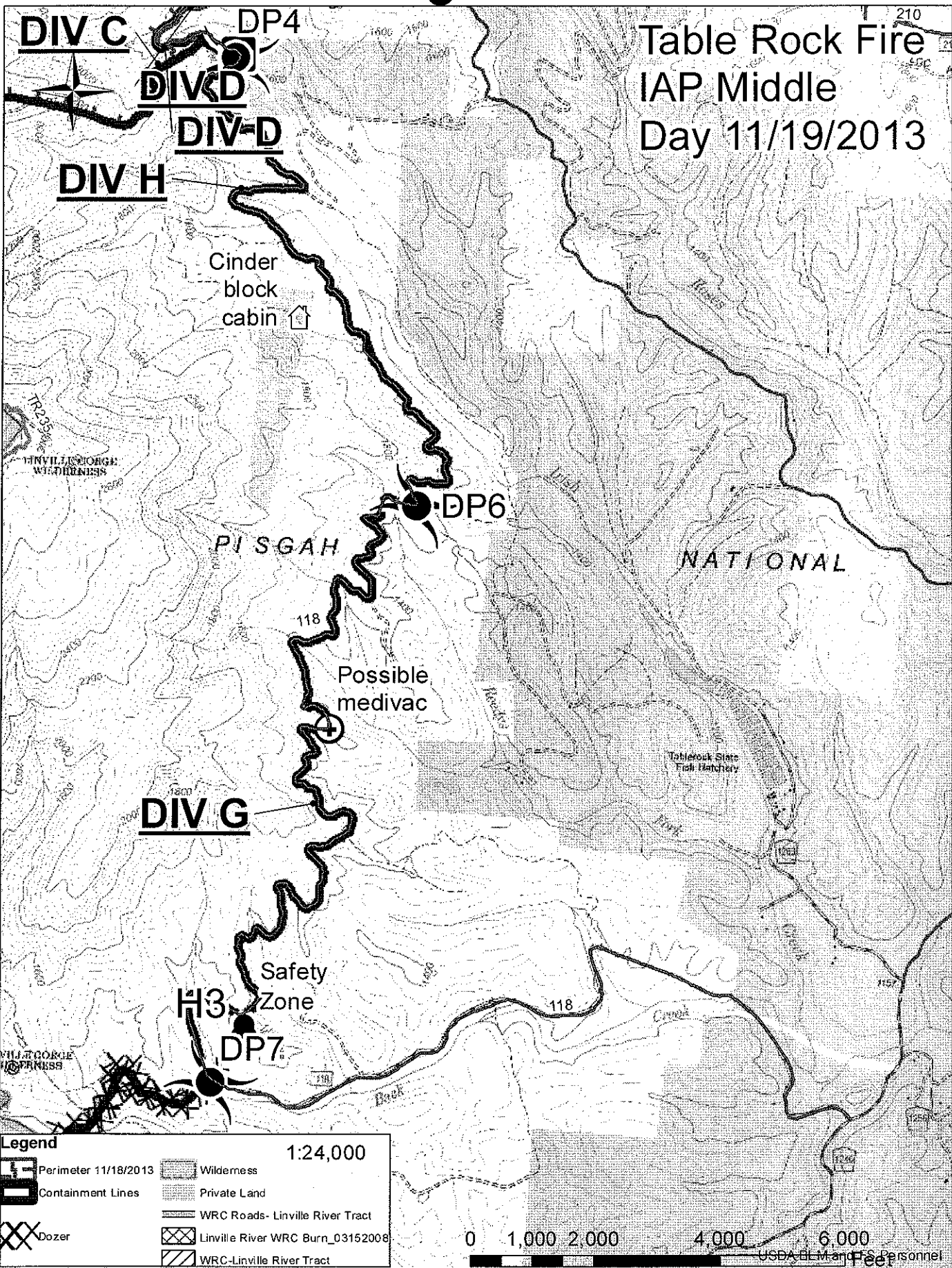


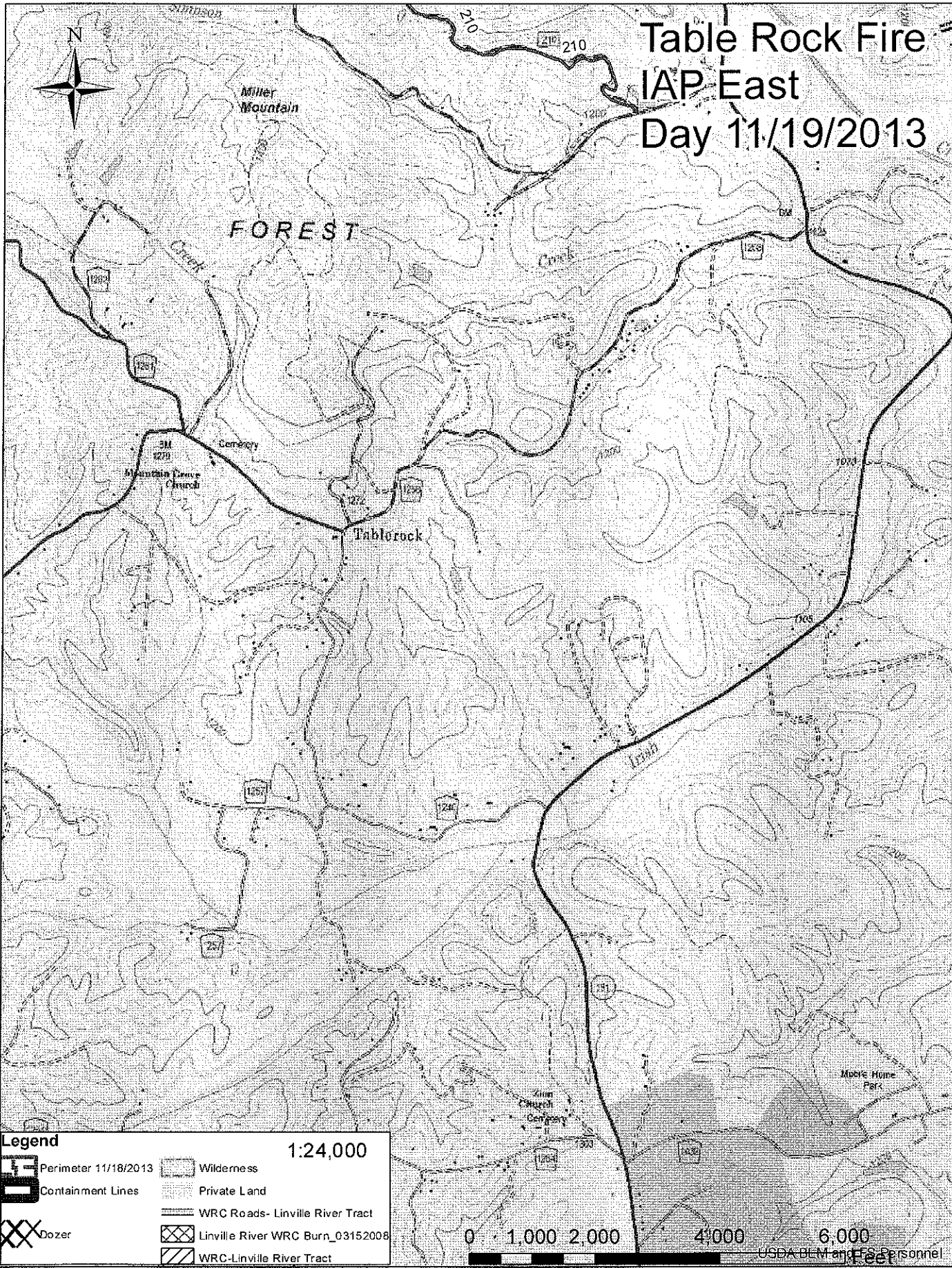
Table Rock Fire
IAP Middle
Day 11/19/2013

Legend 1:24,000

	Perimeter 11/18/2013		Wilderness
	Containment Lines		Private Land
	Dozer		WRC Roads- Linville River Tract
			Linville River WRC Burn_03152008
			WRC-Linville River Tract

0 1,000 2,000 4,000 6,000 Feet
USDA BLM and Personnel

Table Rock Fire IAP East Day 11/19/2013



Legend 1:24,000

	Perimeter 11/18/2013		Wilderness
	Containment Lines		Private Land
	Dozer		WRC Roads- Linville River Tract
			Linville River WRC Burn_03152008
			WRC-Linville River Tract

0 1,000 2,000 4,000 6,000 Feet
USDA BLM and FSP Personnel

UNIT LOG

1. Incident Name	2. Date Prepared	3. Time Prepared
4. Unit Name/Designators	5. Unit Leader (Name and Position)	
6. Operational Period		

7. Personnel Roster Assigned

Name	ICS Position	Home Base

8. Activity Log

Time	Major Events

9. Prepared By: