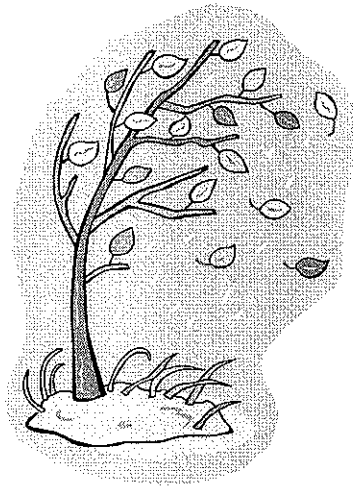


# TABLE ROCK

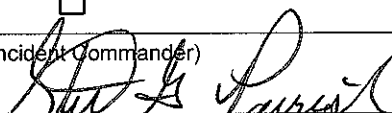
NC-NCF-130066

P8H0Q5 (0811)

## INCIDENT ACTION PLAN



***WEDNESDAY***  
**NOVEMBER 20, 2013**  
**0700-1900**

<b>Incident Objectives</b>	1. Incident Name TABLE ROCK	2. Date Prepared 11/19/13	3. Time Prepared 1820
4. Operational Period 11/20/13 Wednesday Day Shift 0700 - 1900			
5. General Control Objectives for the incident (include alternatives)  1. Provide for the health and safety of firefighting personnel and the public. 2. Provide for protection to surrounding communities, such as the Outward Bound Base Camp. 3. Minimize the impacts to wilderness values, natural resources and cultural resources during operational activities. 4. Manage the incident in the most efficient and cost effective manner commensurate with values at risks. 5. Maintain effective communication and working relationships with our cooperators, partners and the media. 6. Keep the fire east of the Linville River, South of the Spence Ridge Trail (233), west of FDR 118 and the Wolfpit/Shortoff trailhead, north of the Forest boundary and north of the control line established from previous NC Wildlife Resource Commission (NCWRC) prescribe burn located in the NCWRC property.			
6. Weather Forecast for Period  See attached fire weather forecast.			
7. General Safety Message  See attached safety message.			
8. Attachments (mark if attached)			
<input checked="" type="checkbox"/> Organization List - ICS 203 <input checked="" type="checkbox"/> Div. Assignment Lists - ICS 204 <input checked="" type="checkbox"/> Communications Plan - ICS205 <input checked="" type="checkbox"/> Medical Plan - ICS 206 <input checked="" type="checkbox"/> Air Operations Summary - ICS 220	<input checked="" type="checkbox"/> Incident Map <input checked="" type="checkbox"/> Safety Message <input checked="" type="checkbox"/> Traffic Plan <input checked="" type="checkbox"/> Unit Log	<input type="checkbox"/> <input type="checkbox"/> <input type="checkbox"/> <input type="checkbox"/> <input type="checkbox"/>	
9. Prepared by (Planning Section Chief) Phillip Weston	10. Approved by (Incident Commander) Steve Parrish 		

ORGANIZATION ASSIGNMENT LIST		9. Operations Section	
1. Incident Name TABLE ROCK		Day	Peter Myers/Greg Brooks (t)
2. Date Prepared 11/19/13		Planning	Pete Kubiak/Julian Affuso (t)
3. Time Prepared 1838		a. Branch I - Division/Groups	
4. Operational Period 11/20/13 Wednesday Day Shift 0700 - 1900		Branch Director	
Position	Name	Division A/B	Dan Martin/Shane Paxton (t)
5. Incident Commander and Staff		Division D/G/H	Kelly Cagle
Incident Commander	Steve Parrish	Division E	Tom Cruise
Deputy		Division F	Dale Brittain
Safety Officer	Brad Lidell/ Dave Bostic (t)		
Information Officer	B. Strawser/ D. Walker		
		b. Branch II - Division/Groups	
6. Agency Representative		Branch Director	
Agency	Name	Deputy	
Agency Administrator	Nicholas Larson/Lauren Stull (t)	Division/Group	
Resource Advisor	Debbie Thomas	Division/Group	
Forest FMO	Riva Duncan	Division/Group	
District FMO	Brian Browning	Division/Group	
Forest Liaison Officer	Steve Little	Division/Group	
7. Planning Section		c. Branch III - Division/Groups	
Chief	Phillip Weston	Branch Director	
Chief Trainee	Jennifer Hinckley	Deputy	
Resources Unit	Melonie Sellers	Division/Group	
Situation Unit	Jeff DeMatteis	Division/Group	
Documentation Unit		Division/Group	
Demobilization Unit		Division/Group	
Fire Behavior Analyst		Division/Group	
Human Resource Specialist		d. Air Operations Branch	
Training Specialist	John Davis	Air Operations Branch Director	Mike Rock
GIS/Computer Specialist	Eric Pullium	Helibase Manager	Paul Borden
Computer Specialist	Rusty Brown	Air Attack Supervisor	Clint Cross
Check-in	Michael Williams	Helicopter Manager	
LTAN	Caroline Noble	Helicopter Manager	
		Air Tanker Coordinator	
8. Logistics Section		10. Finance Section	
Chief	Peter Dybing	Chief	Wanda Kelley
Deputy	Jerry Jussila	Deputy	
Supply Unit	Duane Cihlar	Time Unit	Kim Winkler
Facilities Unit	James Mayo	Procurement Unit	Mike Walker
Ground Support Unit	Todd Waller	Cost Unit	Holly Cyprian
Communications Unit	Larry Garrett	IBA	Helen Czernik
Medical Unit	Gene-Paul Matson	Prepared by (Resource Unit Leader)	
Security Unit	Greg Blanks	Melonie Sellers	
Ordering	Kim Brookshier (t)		



## INCIDENT Weather Forecast



**FORECAST NO:** 1

**NAME OF FIRE:** Table Rock

**PREDICTION FOR:** DAY SHIFT

**UNIT:** Planning Section

**SHIFT DATE:** 11/20/13

**SIGNED:** Jon Jelsema (240-778-5277)

**TIME AND DATE**

**Incident Meteorologist**

**FORECAST ISSUED:** 1800 – 11/19/13

---

### WEATHER DISCUSSION:

High pressure will hold in place through Thursday. A strong cold front will approach from the west on Friday and move through the area late Friday night or early Saturday. Increasing humidity levels are expected Thursday and Friday ahead of the cold front, with a chance of rain showers Friday through Saturday. Strong North-Northwest winds will follow the cold front along with cooler temperatures and lower humidity levels late Saturday through Sunday.

---

### Weather Forecast (Today):

**Sky/Weather:** Partly cloudy, with dry conditions continuing.

**Max Temperatures:** 47 to 51

**Min Humidity:** 30-35%

**Wind (20 FT):** Morning: East 3 to 5 mph.

Afternoon: South-Southeast 4 to 7 mph with gusts to 15 mph.

**Mixing Height:** 200 to 500 Feet in the morning, increasing to around 3800 Feet in the afternoon.

**Transport Winds:** Southeast 15 mph

**Dispersion Index:** Around 40 / Generally Good

---

### Tonight:

**Sky/Weather:** Increasing cloudiness with fog possible prior to daybreak.

**Min Temperatures:** 30-35

**Max Humidity:** 89-94%

**Wind (20 FT):** Evening: South-Southeast 4 to 6 mph.

Overnight: Northeast 2 to 4 mph.

**Mixing Height:** 1500 Feet in the evening, 200 to 500 feet late.

**Dispersion Index:** 4-6 / Very Poor

**LAVORI:** 6

---

### Thursday:

**Sky/Weather:** Mostly Cloudy with areas of fog possible. Much higher humidity levels expected.

**Max Temperatures:** 51 to 55

**Min Humidity:** 55-60%

**Wind (20 FT):** Morning: Northeast 2 to 4 mph.

Afternoon: Southeast 4 to 6 mph.

**Mixing Height:** 200-500 Feet in the morning, increasing to 3600 Feet

**Transport Winds:** South 10 mph

**Dispersion Index:** 20 – 25 / Generally Poor to Fair

---

### Outlook for Friday through Sunday:

High humidity levels, areas of fog, and scattered showers are expected Friday and Friday night ahead of the cold front. The cold front will move through the area late Friday night or early Saturday, followed by strong northwest winds through Sunday. Relative humidity values will remain high through Saturday, but will drop substantially on Sunday as much drier and colder air works into the region.

# FIRE BEHAVIOR FORECAST

<b>FORECAST NUMBER:</b> 7	<b>TYPE OF FIRE:</b> Wildfire
<b>FIRE NAME:</b> Table Rock	<b>OPERATIONAL PERIOD:</b> 11/20/13 and 11/21/13
<b>DATE ISSUED:</b> November 19th, 2013	<b>TIME ISSUED:</b> 1700
<b>UNIT:</b> NC-NCF	<b>SIGNED:</b> /s/ Andy Baker / Andy Baker FBAN

## INPUTS

### WEATHER SUMMARY:

**\*\*Cold Canadian High Pressure Remains in Place through Mid-Week \*\***

#### Wednesday: Partly Cloudy skies

Max Temp: 47-51 degrees Min RH: 30-35%  
Winds: East 3 to 6 am, SSE 4-8 gusting 15 mph pm  
Mixing Height: max of 3800 feet AGL  
Transport Winds: Southeast 15 mph  
Atmospheric Dispersion Index: 35 - 45 (Good)

#### Wednesday Night: Increasing Clouds, Fog possible late

Low Temp: 30 degrees Max RH: 89-94%  
Winds: Southeast at 4 to 6 becoming NE 2 to 4 mph  
Atmospheric Dispersion Index: Very Poor

**Thursday: Mostly Cloudy. Max Temp: 51-55 degrees Min RH: 55-60% Winds: SE at 4-6 mph**

## OUTPUTS

### FIRE BEHAVIOR

#### GENERAL:

- Continued smoldering of heavy fuels (100 and 1000 hour) where residual heat exists. Active backing and flanking will continue in the Chimney Branch/Cambic Branch drainages with ROS from 1 to 3 chains per hour and Flame Lengths of 1 to 3 feet. Significant uphill runs are possible if the fire establishes itself midslope or lower in these drainages (ROS – 8 to 14 ch/hr, Flame Length – 3 to 6 feet).
- Initial Attack fire behavior (for any potential new starts in hardwood leaf litter during peak burning period): ROS – 5 to 10 chains/hr. Flame Length – 2 to 4 feet.

#### SPECIFIC:

**All Divisions:** see general forecast above

#### AIR OPERATIONS:

- Afternoon mixing heights up to 3800 feet AGL with southeasterly transport winds of 15 mph.

## SAFETY

- Forecasted Fire Danger Ratings (for Grandfather Ranger District):  
ERC – 27 BI – 33









<b>Division Assignment List</b>		1. Branch		2. Division/Group <b>F</b>			
3. Incident Name TABLE ROCK		4. Operational Period 11/20/13 Wednesday Day Shift 0700 - 1900					
5. Operations Personnel							
Operations Chief		P. Myers/G. Brooks		Division/Group Supervisor			Dale Brittain
Planning Operations Chief		P. Kubiak/J. Affuso		Air Attack Supervisor			
Branch Director				Safety Officer		Mickey Bunton (0-48)	
6. Resources Assigned this Period							
Strike Team/Task Force/ Resource Designator		Leader	Num of Pers.	Trans. Y/N	Drop Off PT./Time	Pick Up PT./Time	
(E-6) Engine T-6 Croatan #632		M. Teel			0700	1900	
(E-10) Engine T-6 CS/NWR #262		D. Odegard	3		0700	1900	
(E-11) Engine T-6 Savannah River #3		K. Aiken	3		0700	1900	
(E-13) Engine T-6 Oconee #681		E. Burrel	3		0700	1900	
(E-23) Dozer T-2 NC ST		C. Wilmoth	3		0700	1900	
(C-2) T-2IA OK-BIA		W. Kerwir	20		0700	1900	
Dozer T-3 D&D Motors		S. Young (E-1)	2		0700	1900	
READ		A. Triplett (0-105)	1		0700	1900	
HEQB (t)		P. Powell (0-84)	1		0700	1900	
TFLD		C. Frisbee (E-2.1)	1		0700	1900	
TFLD (t)		F. Sutton (0-55)	1		0700	1900	
EMT		K. Kessler (0-64)	1		0700	1900	
EMT		C. Warwnock (0-63)	1		0700	1900	
(E-1) Dozer T-3							
7. Control Operation Prep control line west of FDR 118 south of Linville River.							
8. Special Instructions Burke Co. Ambulance will be located at Wolf Pit (DP8). Identify Fallers within the Division. M.I.S.T. tactics, as appropriate. Maintain LCES. Medical emergencies need to contact Division Supervisor and follow Medical Plan, as appropriate. Each Division will identify an "Incident within an Incident" IC for that Division being "_____". Utilize the READ, as appropriate.							
9. Division/Group Communications Summary							
Function	Frequency - RX	Frequency - TX	Tone	System	Channel	System	Channel
Command							
Tac 3	168.600	168.600			3		
Logistics							
Air to Ground	167.425	167.425			9		
Prepared by (Resource Unit Leader) Melonie Sellers		Approved by (Planning Section Chief) Phil Weston		Date Prepared 11/19/13		Time Prepared 1938	

# AIR OPERATIONS SUMMARY

Prepared By: Paul Borden

Prepared Date: 11/19/13

Prepared Time: 1700

1. NAME: Catawba Helibase	2. OPS PERIOD DATE: Tuesday, Nov. 20, 2013	START TIME: 0800	END TIME: 1900	SUNRISE: 0708	SUNSET: 1717
3. REMARKS (Safety Notes, Hazards, Air Operations Special Equipment, etc.): TFR is established over the Incident Mission Request thru DIVS to OPS Oak Hill Engine T3, and RHI water rescue craft assigned to Catawba Helibase			4. READY ALERT AIRCRAFT MEDIVAC or IA - Either depending availability		5. TFR 3-0990 5500 AGL

6. PERSONNEL	NAME	PHONE #	7. FREQUENCIES	AM	FM	8. FIXED-WING- Type/ Make-Model/ #/ Base
AOBD	Mike Rock	606-599-2377	AIR/ AIR FW			AIRTANKERS-
ASGS			AIR/ AIR RW- FF		122.925	LEAD PLANES- 0
ATGS			AIR/ GROUND		167.425 TXRX	
ATGS	Clint Cross	512-787-9081	COMMAND			Attached resources include Oak Hill
HLCO						Engine 4 (Jimmy Winters 828-443-4292)
HEB2	Paul Borden	252-671-4576	DECK		163.100	Dive Boat (John) 828-334-4190
HEB1-T			TOLC		N/A	
9. HELICOPTERS (Use Additional Sheets as Necessary)						
OTHER FW AIRCRAFT - A/A 7SH						

FAA #	TY	MAKE/ MODEL	BASE	AVAIL	START	Managers	FAA #	T	MAKE/ MODEL	BASE	AVAIL	START	REMARKS
3HA	ITI	Bell 407	ICP-field	U/A		Jon Holleran							423-715-5428
8HX	II	Bell 205	ICP-field	0800	0800	Hans Egholm							585-278-4206
7SH	FW	King Air	Morganton Airport	U/A		Clint Cross							512-787-9081
27HX	ITI	Bell 407	ICP-field	0800	0900	Dave Moore							513-616-9192

10. TASK/ MISSION/ ASSIGNMENT (Type/ function includes: Air Tactical, Retardant, Recon, Personnel Transport, Bucket Operations, SAR, etc.)				
TYPE/FUNCTION	NAME OF PERSONNEL OR CARGO (if applicable) or instructions for tactical aircraft			
	MISSION START 0800			
	FLY FROM 0800			
	FLY TO Initial Attack			

**INCIDENT RADIO COMMUNICATIONS PLAN**

1. Incident Name  
**Table Rock**

2. Date/Time Prepared  
**11/18/13 1800**

3. Operational Period Date/Time  
**11/19/13 0700-1900**

**4. BASIC RADIO CHANNEL UTILIZATION**

Radio Type/Cache	Channel	Function	Frequency/Tone	Wide/ Narrow	Assignment	Remarks
King NIFC	Ch 1	Tac 1	Rx/Tx 170.000	N	Division A	
King NIFC	Ch 2	Tac 2	Rx/Tx 166.675	N	A to G Secondary	
King NIFC	Ch 3	Tac 3	Rx/Tx 168.600	N	Division F	
King NIFC	Ch 4	Tac 4	Rx/Tx 168.050	N	Division C,D, H, G	
King NIFC	Ch 5	Tac 5	Rx/Tx 168.200	N	Division E	
King NIFC	Ch 6	Clingman Repeater	Rx 168.725 Tone 103.5 Tx 172.225 Tone 136.5	N	Command	
King NIFC	Ch 7	High Peak Repeater	Rx 168.725 Tone 103.5 Tx 172.225 Tone 103.5	N	Command	
King NIFC	Ch 8	Grandmother Repeater	Rx 168.725 Tone 103.5 Tx 172.225 Tone 146.2	N	Command	
King NIFC	Ch 9	Air to Ground 1	Rx/Tx 164.150	N	Forest IA	
King NIFC	Ch 10	Air to Ground 2	Rx/Tx 167.425	N	Primary	
King NIFC	Ch 11	Initial Attack	Rx/Tx 169.900	N	IA	
King NIFC	Ch 12	Open		N		
King NIFC	Ch 13/16	Open		N		

5. Prepared By (Communications Unit)  
David Smallman 828-778-2076

ICS 205

NFS 1330

# HEALTH AND SAFETY MESSAGE

*Every person must have a briefing prior to going on line.*

INCIDENT: Table Top	DATE: Wednesday 20,2013 TIME: Day Shift
<b>Major Hazards and Risks:</b>  <b>Transition</b> <b>Snags</b> <b>Communications</b> <b>Driving</b> <b>Burn Out Operations</b>	
<b>Mitigation Measures:</b>  <b>Transition</b> – Make sure you know your assignment and who your supervisor is.  <b>Snags</b> – Look up, look down, and look around. Post a lookout when working in areas with snags.  <b>Communications</b> – Do Not Assume.....ask for feedback when giving instructions to ensure a clear understanding! Use tailgate briefings to ensure changes are properly communicated face to face when possible.  <b>Driving</b> – Your chances of being in an accident are always highest at intersections! Drop Points, Division Breaks and Staging Areas are intersections. Watch out for other drivers and assume additional vehicles and people will congest these areas. Leave room for other traffic and don't make your vehicle an obstacle for others to drive around. Drive defensively with lights on at all times. Wear your seatbelt. Anticipate oncoming traffic. Maintain at least a 3 second distance behind the vehicle ahead. Drive slowly on steep narrow roads.  <b>Burn Out Operations</b> - Be careful, watch out for one another, and be heads up for extreme fire Behavior. Avoid driving thru dense smoke. Rotate holders to get fresh air.  Lookouts Communications Escape Routes Safety Zones	
IMT Safety Officers Brad Lidell, Dave McFee, Dave Bostic, Keith Jenkins, Gary Mease, and Mickey Bunton  Feel free to ask us questions or make suggestions!	
<b><i>LCES must be in place prior throughout the entire operational period. Reevaluate as move locations during the day.</i></b>	

INCIDENT ACTION PLAN SAFETY ANALYSIS

Incident: **Table Rock**

Date Prepared: 1/18/13

Time Prepared: 1900

Operational Period: 1/19 (Dm)

LCES - Analysis of Tactical Applications

Other Risk Analysis

Division/Group	Downhill Fireline	Underslung fireline	Indirect Fireline	Mid-slope Fireline	Dozer Operations	Anchor Points	Extreme Conditions (Spotting, Wind-driven)	Unburned Area	Snags and Rolling Material	Night Ops & Fatigue	LCES Mitigations	Hazard Materials	Transportation, 1 Hr +	Communications (Cell Phone Coverage)	Structure Protection	Multi-aircraft	Other Risk Mitigations
A	X		X					X	X		1. Establish & Maintain LCES, report LCES delay to DIVS 2. Look Up, Look Down, Look Around 3. Post Experienced Lookouts 4. Ensure Fireline is anchored 5. All FF's know current weather & life support status 6. Flag hazard trees and snags, post lookouts 7. FROBS to develop weather watch system 8. Keep FF's informed of any changes in weather	X	X			X	1. Offensive driving/safe driving 2. Preplan structure protection 3. Brief personnel on structures hazards 4. Hazmat - See pg 11 in IPRG 5. Air Attack Coordinate with all air resources 6. Clear drop zones 7. Situational Awareness 8. Watch out for complacency, supervisors monitor 9. All Personnel meet 2.1 work, rater, team monitor 10. Provide clear concise briefings
B																	
F	X		X					X	X			X	X			X	
D,H,G	X		X					X	X			X	X			X	
E	X							X	X			X	X			X	
I/A	X		X					X	X			X	X			X	

Prepared by (Name and Position)

David McFree, SOFR

*Wood*

*1/18/13*

MEDICAL PLAN	1. Incident Name	2. Date Prepared	3. Time Prepared	4. Operational Period				
	Table Rock	11/19/13	0700	Day				
<b>5. Incident Medical Aid Station</b>								
Medical Aid Stations	Location						Paramedics	
							Yes	No
Frank Abel 423-595-1578	See 204 for DIV assignment						X	
Jeremy Milner 720-227-5358	See 204 for DIV assignment							X
Chris Warnock 231-920-8730	See 204 for DIV assignment							X
Kenny Kessler 318-729-6442	See 204 for DIV assignment							X
<b>6. Transportation</b>								
A. Ambulance Services								
Name	Address	Phone	Paramedics					
			Yes	No				
Burke County EMS	Morganton, NC	911 828-437-1911	X					
<u>AIR AMBULANCES</u>								
MAMA - Asheville	Travel time 25-35 mins						X	
Wings Air Rescue – Johnson City, TN	Travel time 25-35 mins						X	
B. Incident Ambulances								
Name	Location						Paramedics	
							Yes	No
Burke Co EMS	Fish Hatchery Road						X	
<u>TECHNICAL RESCUE</u>								
NC H.A.R.T. Technical Rescue	Accessed by 911							
<b>7. Hospitals</b>								
Name	Address	Travel Time		Phone	Helipad		Burn Center	
		Air	Grnd		Yes	No	Yes	No
Grace Hospital	Morganton, NC 35° 43.34' 81° 39.17'	10m	45m	828-659-5175	X			X
Johnson City Medical Center Level 1	Johnson City, TN 36° 18.449' 82° 23.31'	25m	90m	423-431-6561	X			X
Memorial Mission Hospital Level II	Asheville, NC 35° 34.533' 82° 32.911'	25m	90m	828-213-1948	X			X
Wake Forest Baptist Level 1/ Burn Center	Winston Salem, NC 36° 5.39' 80° 16.02'	50m	180m	336-713-9000	X		X	
<b>See Reverse side for Line Emergency and Injury Reporting Procedures</b>								
9. Prepared by Gene-Paul Matson (MEDL) 434-665-0444					10. Reviewed by Brad Lidell (SOF2)			

## Line Emergency and Injury Reporting Procedures Procedure

The first person on scene should contact the DIVS. If needed and Cell service available the DIVS will contact 911, then Asheville Dispatch on Command in all injury situations.

DO NOT use the name of the injured individual over the radio. In the event of a minor injury, as noted by the person calling in the medical emergency, so state when relaying information so a false sense of urgency is not produced.

### ***Medical Information***

Is the injury: Remote Location \_\_\_\_\_  
Critical \_\_\_\_\_ Serious \_\_\_\_\_ Minor \_\_\_\_\_

Type of injury: \_\_\_\_\_

Is the patient conscious: Yes \_\_\_\_\_ No \_\_\_\_\_

Is the patient experiencing any difficulty breathing: Yes \_\_\_\_\_ No \_\_\_\_\_

Is there uncontrolled bleeding: Yes \_\_\_\_\_ No \_\_\_\_\_

Is an EMT present and giving treatment: Yes \_\_\_\_\_ No \_\_\_\_\_

Is an EMT needed: Yes \_\_\_\_\_ No \_\_\_\_\_

Is ALS (Advanced Life Support) needed: Yes \_\_\_\_\_ No \_\_\_\_\_

Specific location of patient( Lat/Long,DP, Helispot) \_\_\_\_\_

Is a helicopter needed for Evacuation: Yes \_\_\_\_\_ NO \_\_\_\_\_

Name of radio contact, channel, or frequency: \_\_\_\_\_

Best route to patient for ground transportation: \_\_\_\_\_

**All EMERGENCIES: -- Secure the area and identify witness for later investigation.**

**Keep an accurate log of events.**

### Medical Radio Procedures

In a medical emergency, ICP Communications will:

1. Immediately notify MEDL, Safety, and Command and General Staff (ensure contact of DIVS, and EMT listed in medical plan). **The DIVS will command (or delegate) the incident response scene, coordinating with the accident EMT and MEDL.**

MEDL will:

insure all section chiefs are informed:

*C&G Checklist: IC\_\_ Information Officer \_\_ Log Chief\_\_ Finance Section Chief\_\_ Ops Chief\_\_ Safety\_\_ Plans Chief\_\_*

2. Acquire pertinent medivac information on form above.

If air transportation is required, notify Air Ops about medical aircraft

Keep log of all emergency radio traffic, departure and arrival times, and other pertinent information.

## TRAINING MESSAGE

NOVEMBER 20

Trainees, if you haven't checked in with the Training Specialist, please do so as soon as possible. The process takes only a few minutes to complete if you come prepared with the names, addresses and phone numbers for your home unit and trainer/evaluator. I'm located in the Plans/Finance room next to Check-in.

**Training Watch Out**

**It's Day 2 of your assignment and your trainer  
still can't remember your name.**

"Education is when you read the fine print. Experience is what you get if you don't."

- Pete Seeger

John Davis  
TNSP



<b>Table Rock Fire - Southern Area Type II Team - Cell Phone Numbers</b>		
<b><u>Name</u></b>	<b><u>Position</u></b>	<b><u>Number</u></b>
Parrish, Steve	ICT2	850-524-1244
Lidell, Richard	SOFR2	612-583-6543
Strawser, Bonnie	PIO2	252-423-0815
Czernik, Helen	IBA2	252-619-0366
Kubiak, Peter	OSC2	404-661-4819
Rock, Mike	AOBD	606-599-2377
Weston, Phillip	PSC2	850-556-3684
Dybing, Peter	LSC2	340-626-6365
Kelley, Wanda	FSC2	423-584-1472
Affuso, Julian	DIVS	850-570-9090
Martin, Daniel	DIVS	479-774-5793
Crews, Tom	DIVS	252-216-6361
Sellers, Melonie	RESL	601-508-8997
DeMatteis, Jeff	SITL	801-415-9080
Brown, Rusty	CTSP	478-973-6231
Davis, John	TNSP	231-878-0074
Noble, Caroline	LTAN	850-591-7122
Jussila, Jerry	LSC2	218-235-8983
Garrett, Larry	COML	404-354-5279
Waller, Todd	GSUL	501-337-6308
Matson, Gene-Paul	MEDL	434-665-0444
Cihlar, Duane	GSPUL	218-370-1662
Blanks, Gregory	SECM	912-210-3976
Winkler, Kimberly	TIME	***-***-****
McDonald, Teresa	PTRC	352-454-5385
Williams, Michael	SCKN(T)/GISS	828-835-0094
Cyprian, Holly	COST(T)	928-919-3027
Brookshire, Kimberly	ORDM(T)	859-595-4005
Hinckley, Jennifer	PSC2 (T)	850-559-4611
Taylor, Frank	RADO	828-337-7998
Melear, Carl	FOBS	706-232-8988
Jelsema, Jonathon	IMET	240-778-5277
Woldu, Takele	BUYM	828-280-3052
Updegraff, Kelly	BUYM	912-271-1519
Brooks, Greg	OSC2(T)	828-421-5025

	A	B	C
1	<b>Table Rock Fire Cell Phone Numbers</b>		
2			
3	<b>Name</b>	<b>Position</b>	<b>Number</b>
4	Little, Steve	FLIA	828-778-2077
5	McFee, Dave	SOFR	828-208-9930
6	Stull, Lauren	AADM	540-312-5012
7	Walker, Deborah	PIO	910-975-0803
8	Simon, Donald	PIO	910-975-1895
9	Eller, Terry	Planning Ops	828-779-2081
10	Smith, Brian	DIV	828-284-7877
11	Paxton, Shane	DIVS A-B	865-414-6460
12	Frisbee, Chase	DIVS F-G	828-553-1055
13	Nelson, David	DIV E	252-571-2325
14	Phillip, Greg	DIVS I/A	828-460-0049
15	Cagle, Kelly	DIVS D-H	336-302-0343
16	Pullium, Eric	GIST	828-644-8966
17	Mayo, Jim	LOGC	828-712-7762
18	Smallman, Dave	ORDM	828-778-2076
19	Roper, James	RCDM(t)	828-208-3782
20	Lyda-Taylor, Kerri	PTRC	828-776-5989
21	Walker, Mike	PA50	828-337-1312
22	Paul Borden	HEB2	252-671-4576
23	Rhea, Rusty	HEBM	828-273-4322
24	Egholm, Hans	HMGB	585-278-4206
25	Murphy, Jerry	HMGB	828-208-1768
26	Able, Frank	EMTF	423-595-1578
27	Kessler, Kenneth	EMTF	318-729-6442
28	Crisp, Jason	Lead LEO	828-442-2470
29	Vines, Nick	Night SEC1	423-297-3181
30	Barnett, Steve	Night SEC1	252-671-5787
31			
32	<b>ICP FAX</b>		<b>828-438-5287</b>

ICP /  
TRAFFIC PATTERN

HELIBASE

BRIEFING  
AREA  
RESTROOMS

ICP

ONE WAY

OVER  
FLOW  
PARKING

ENGINE  
PARKING

ICP PARKING

EXIT

GATE

FIRE  
SUPPORT  
PARKING

N

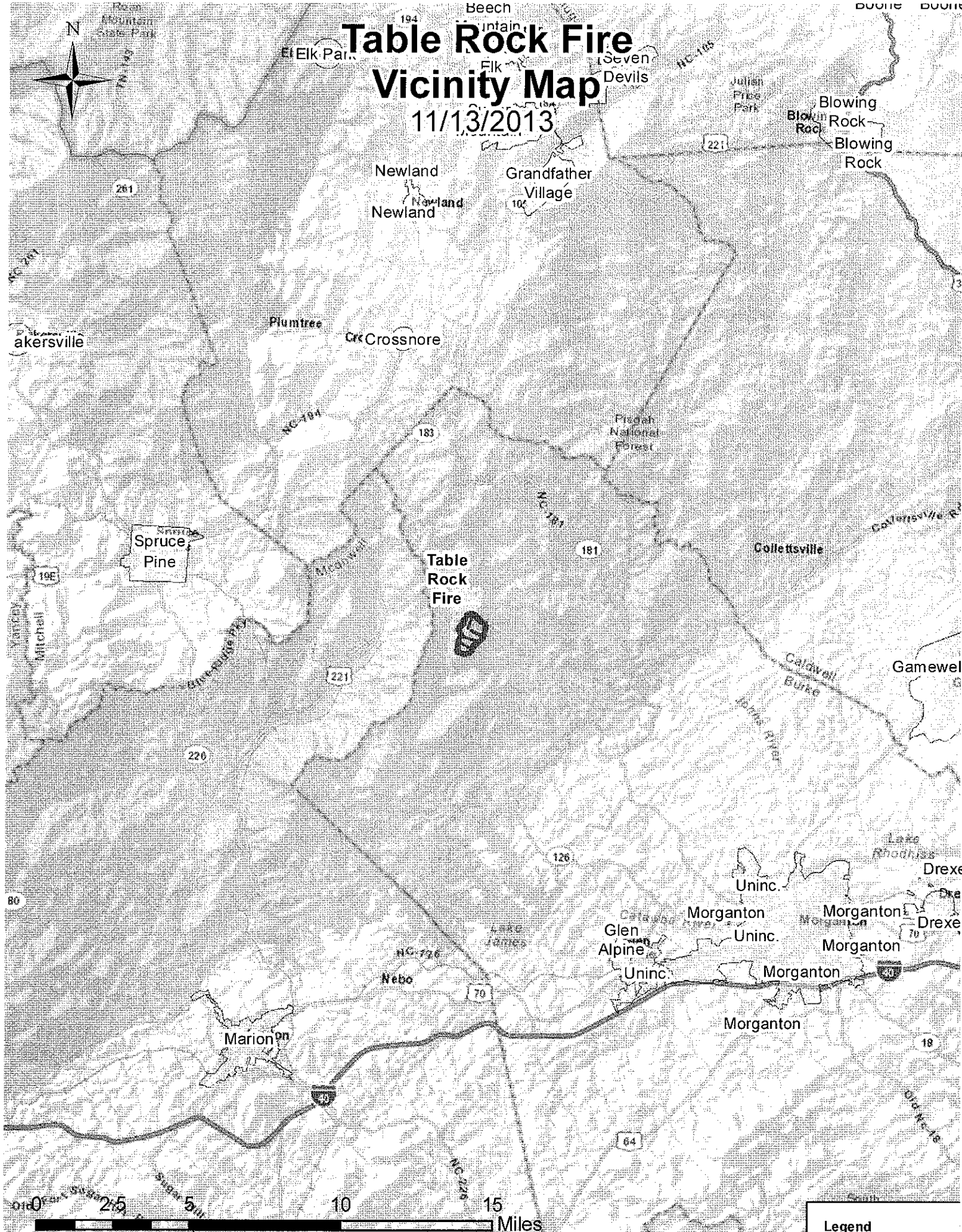
© 2005 Google  
Map data © 2005 Google

Google

Index Date: 11/17/2011 35°54'10" N 81°42'55" W elev: 1013 ft. coord: 2

# Table Rock Fire Vicinity Map

11/13/2013



Spruce Pine

Table Rock Fire

Blowing Rock

Marion

Glen Alpine

Morganton

Morganton

Morganton

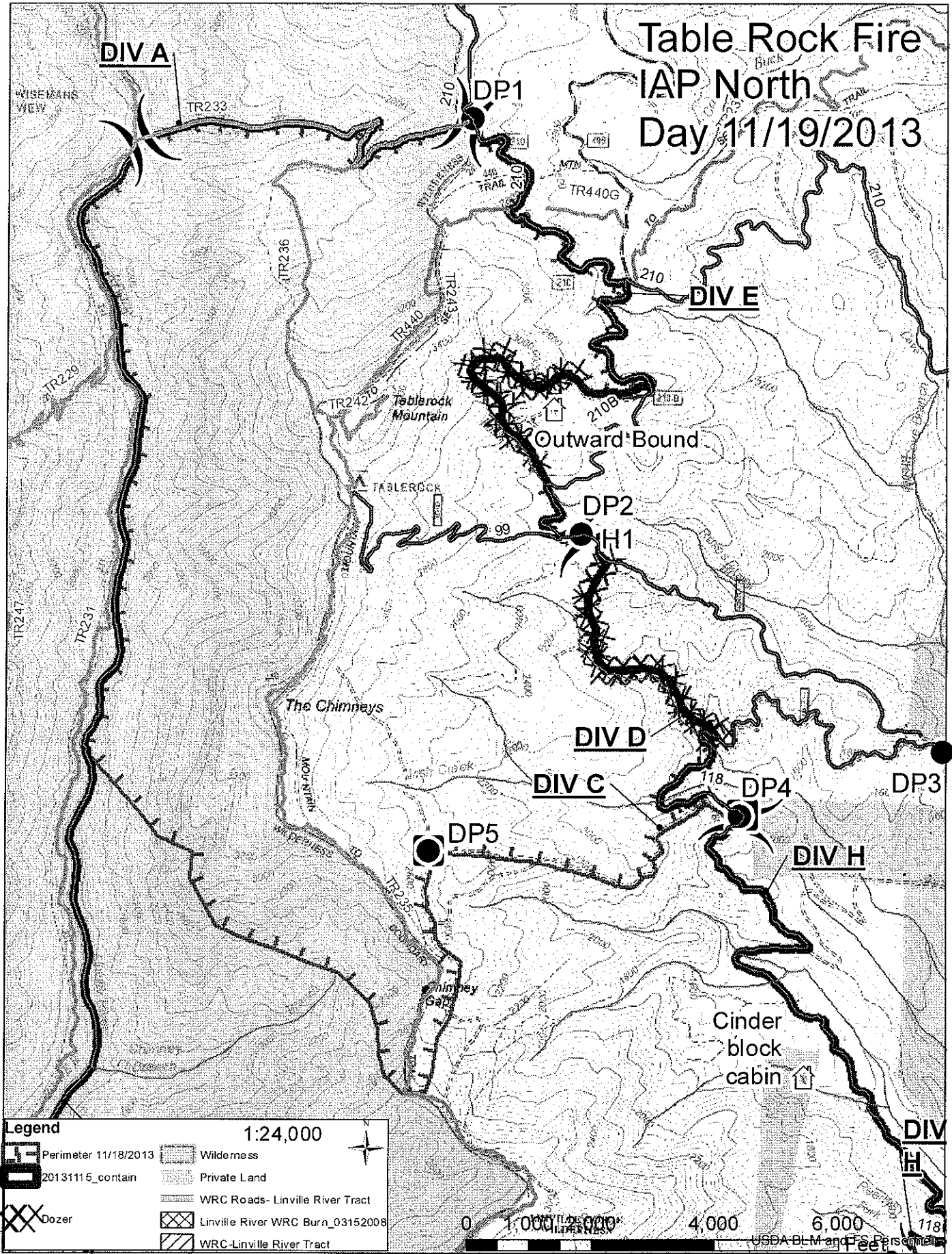
### Legend



Table Rock Perimeter

Sources: Esri, DeLorme, NAVTEQ, USGS, Intermap, iP  
METI, Esri China (Hong Kong), Esri (Thailand), TomTom

# Table Rock Fire IAP North Day 11/19/2013

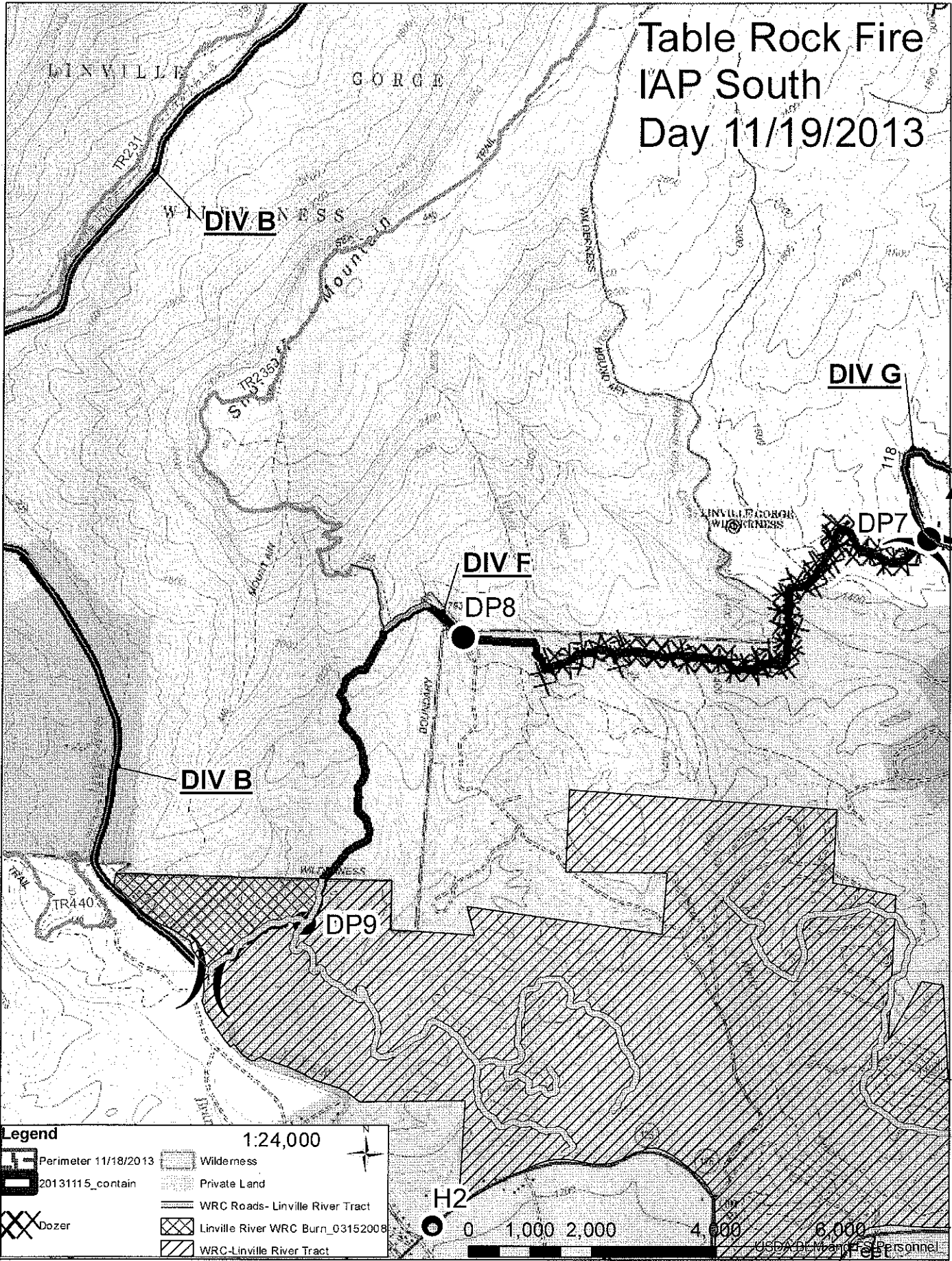


**Legend** 1:24,000

	Perimeter 11/18/2013		Wilderness
	20131115_contain		Private Land
	Dozer		WRC Roads- Linville River Tract
	Linville River WRC Burn_03152008		WRC-Linville River Tract



# Table Rock Fire IAP South Day 11/19/2013



**Legend** 1:24,000

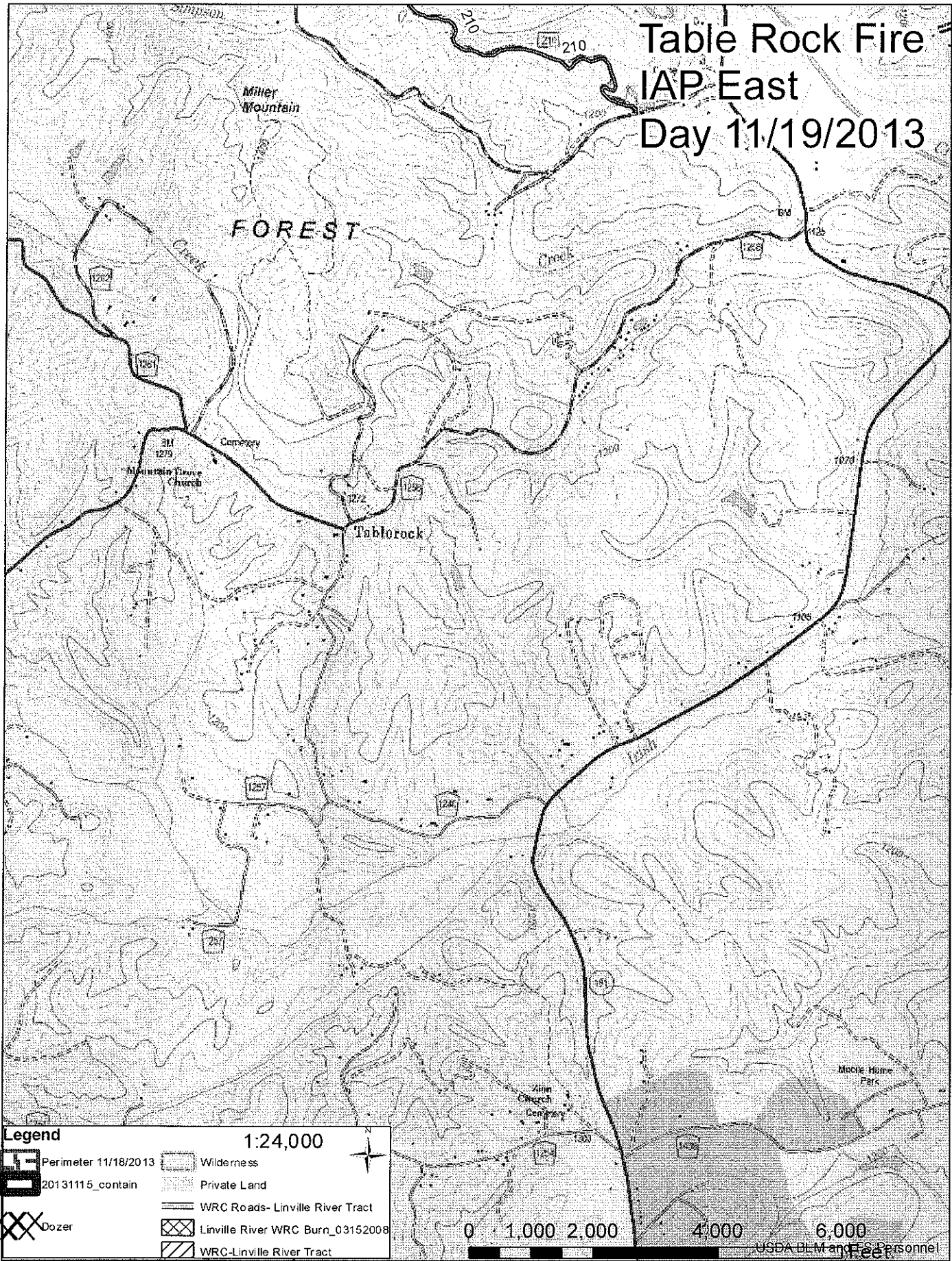
	Perimeter 11/18/2013		Wilderness
	20131115_contain		Private Land
	Dozer		WRC Roads- Linville River Tract
			Linville River WRC Burn_03152008
			WRC-Linville River Tract

**H2**

0 1,000 2,000 4,000 6,000 Feet

USDA DLM and FSP Personnel

# Table Rock Fire IAP East Day 11/19/2013



FOREST

Table Rock

**Legend** 1:24,000

	Perimeter 11/18/2013		Wilderness
	20131115_contain		Private Land
	Dozer		WRC Roads- Linville River Tract
			Linville River WRC Burn_03152008
			WRC-Linville River Tract



USDA BLM and FFS Personnel

# Table Rock Fire IAP Middle Day 11/19/2013

