

TABLE ROCK Fire

*NC-NCF-130066
P8HoQ5 (0811)*

Incident Action Plan



Friday
November 22, 2013
0700-1800

Incident Objectives	1. Incident Name <p style="text-align: center;">TABLE ROCK</p>	2. Date Prepared <p style="text-align: center;">11/21/13</p>	3. Time Prepared <p style="text-align: center;">1825</p>
4. Operational Period <p style="text-align: center;">11/22/13 Friday Day Shift 0700 - 1900</p>			
5. General Control Objectives for the incident (include alternatives) <ol style="list-style-type: none"> 1. Provide for the health and safety of firefighting personnel and the public. 2. Provide for protection to surrounding communities, such as the Outward Bound Base Camp. 3. Minimize the impacts to wilderness values, natural resources and cultural resources during operational activities. 4. Manage the incident in the most efficient and cost effective manner commensurate with values at risks. 5. Maintain effective communication and working relationships with our cooperators, partners and the media. 6. Keep the fire east of the Linville River, South of the Spence Ridge Trail (233), west of FDR 118 and the Wolfpit/Shortoff trailhead, north of the Forest boundary and north of the control line established from previous NC Wildlife Resource Commission (NCWRC) prescribe burn located in the NCWRC property. 			
6. Weather Forecast for Period <p style="text-align: center;">See attached fire weather forecast.</p>			
7. General Safety Message <p style="text-align: center;">See attached safety message.</p>			
8. Attachments (mark if attached)			
<input checked="" type="checkbox"/> Organization List - ICS 203	<input checked="" type="checkbox"/> Incident Map	<input type="checkbox"/>	
<input checked="" type="checkbox"/> Div. Assignment Lists - ICS 204	<input checked="" type="checkbox"/> Safety Message	<input type="checkbox"/>	
<input checked="" type="checkbox"/> Communications Plan - ICS205	<input checked="" type="checkbox"/> Traffic Plan	<input type="checkbox"/>	
<input checked="" type="checkbox"/> Medical Plan - ICS 206	<input checked="" type="checkbox"/> Unit Log	<input type="checkbox"/>	
<input checked="" type="checkbox"/> Air Operations Summary - ICS 220	<input checked="" type="checkbox"/>	<input type="checkbox"/>	
9. Prepared by (Planning Section Chief) Phillip Weston	10. Approved by (Incident Commander) Steve Parrish		

ORGANIZATION ASSIGNMENT LIST		9. Operations Section	
1. Incident Name TABLE ROCK		Day	Peter Myers/Greg Brooks (t)
2. Date Prepared 11/21/13		3. Time Prepared 1821	Planning Pete Kubiak/Julian Affuso (t)
4. Operational Period 11/22/13 Friday Day Shift 0700 - 1900		a. Branch I - Division/Groups	
Position	Name	Branch Director	
5. Incident Commander and Staff		Division A/B	Dan Martin/Shane Paxton (t)
Incident Commander	Steve Parrish	Division D/G/H	Kelly Cagle
Deputy		Division E	Tom Crews
Safety Officer	Brad Lidell/ Dave Bostic (t)	Division F	Dale Brittain
Information Officer	Bonnie Strawser/ Deborah Walker		
		b. Branch II - Division/Groups	
6. Agency Representative		Branch Director	
Agency	Name	Deputy	
Agency Administrator	Nicholas Larson/Lauren Stull (t)	Division/Group	
Resource Advisor	Debbie Thomas	Division/Group	
Forest FMO	Riva Duncan	Division/Group	
District FMO	Brian Browning	Division/Group	
Forest Liaison Officer	Steve Little	Division/Group	
7. Planning Section		c. Branch III - Division/Groups	
Chief	Phillip Weston	Branch Director	
Chief Trainee	Jennifer Hinckley	Deputy	
Resources Unit	Melonie Sellers	Division/Group	
Situation Unit	Jeff DeMatteis	Division/Group	
Incident Meteorologist (IMET)	Jon Jelsema	Division/Group	
Demobilization Unit	Thomas Barrett	Division/Group	
Fire Behavior Analyst	Gary Jarvis	Division/Group	
Human Resource Specialist		d. Air Operations Branch	
Training Specialist	John Davis	Air Operations Branch Director	Mike Rock
GIS/Computer Specialist	Eric Pullium	Helibase Manager	Paul Borden
Computer Specialist	Rusty Brown	Air Attack Supervisor	
Check-in	Michael Williams	Helicopter Manager	John Holloran
LTAN	Caroline Noble	Helicopter Manager	Dave Moore
8. Logistics Section		Helicopter Manager	Dennis Fogel
Chief	Peter Dybing	10. Finance Section	
Deputy	Jerry Jussila	Chief	Wanda Kelley
Supply Unit	Duane Cihlar	Comps/Claims	Terri McDonald
Facilities Unit	James Mayo	Time Unit	Kim Winkler
Ground Support Unit	Todd Waller	Procurement Unit	Mike Walker
Communications Unit	Larry Garrett	Cost Unit	Holly Cyprian (t)
Medical Unit	Gene-Paul Matson	IBA	Helen Czernik
Security Unit	Greg Blanks	Prepared by (Resource Unit Leader)	
Ordering	Kim Brookshier (t)	Melonie Sellers	



INCIDENT Weather Forecast



FORECAST NO: 3

NAME OF FIRE: Table Rock

PREDICTION FOR: DAY SHIFT

UNIT: Planning Section

SHIFT DATE: 11/22/13

SIGNED: Jon Jelsema (240-778-5277)

TIME AND DATE

Incident Meteorologist

FORECAST ISSUED: 1800 – 11/21/13

WEATHER DISCUSSION:

A strong cold front will approach from the west today and tonight, then move through the area Saturday morning. Showers will accompany the cold front, with strong north-northwest winds developing behind it.

Weather Forecast (Today):

Sky/Weather: Cloudy with areas of drizzle and fog in the morning, then mostly cloudy in the afternoon. Chance of measureable rain, 20 percent.

Max Temperatures: 62 to 66

Min Humidity: 60-65%

Wind (20 FT): Morning: Light or Calm
Afternoon: Southwest 4 to 7 mph.

Mixing Height: 200 Feet early in the morning, increasing to 2600 Feet

Transport Winds: West-Southwest 12 mph

Dispersion Index: 25 – 30 / Fair

Tonight:

Sky/Weather: Cloudy. A slight chance of showers in the evening, then showers likely after midnight. Chance of measureable rain 70%.

Min Temperatures: 49-53

Max Humidity: 95-100%

Wind (20 FT): Southwest 1-3 mph, becoming Northwest 3 to 5 mph late.

Mixing Height: 1200 Feet in the evening, lowering to around 600 feet after midnight.

Dispersion Index: 2-4 / Very Poor

LAVORI: 9

Saturday:

Sky/Weather: Cloudy with showers likely in the morning, then clearing in the afternoon. Chance of measureable rain 60%.

Max Temperatures: 56 to 60

Min Humidity: 50-55%

Wind (20 FT): Morning: North-Northwest 5 to 8 mph.
Afternoon: Northwest 10 to 15 mph with gusts to 25 mph.

Mixing Height: 600 Feet (Morning), 3500 Feet (Afternoon)

Transport Winds: Northwest 15 mph (Morning), Northwest 20 mph (Afternoon).

Dispersion Index: 20 – 25 / Fair (Morning), 40-45 / Generally Good (Afternoon).

Outlook for Sunday through Tuesday:

Strong Northwest winds with gusts as high as 35 to 40 mph are expected into Sunday morning. Sharply colder temperatures will filter into the region Sunday and Sunday night, with temperatures not getting out of the 30s for highs, and lows bottoming out in the upper teens to around 20. Temperatures will be milder with lighter winds on Monday. An area of low pressure will track out of the Gulf of Mexico Monday night and Tuesday, spreading rainfall, potentially a significant amount across the fire through mid week.

FIRE BEHAVIOR FORECAST

FORECAST NUMBER: 8	TYPE OF FIRE: Wildfire
FIRE NAME: Table Rock	OPERATIONAL PERIOD: 11/22/13
DATE ISSUED: November 21th, 2013	TIME ISSUED: 1700
UNIT: NC-NCF	SIGNED: /s/ Gary Jarvis FBAN

INPUTS

WEATHER SUMMARY:

A strong cold front will approach the area from the west today and tonight.

Thursday: Chance of measureable rain 20%

Max Temperatures: 60 to 64 Min Humidity: 60-65%

Wind (20 FT): Morning: Light or Calm

Afternoon: Southwest 4 to 7 mph.

Mixing Height: 200 Feet early in the morning, increasing to 3000 Feet

Transport Winds: West 10 mph

Dispersion Index: 25 – 30 / Fair

Thursday Night: Chance of measureable rain 70%

Min Temperatures: 50-54

Max Humidity: 95-100%

Wind (20 FT): Southwest 1-3 mph, becoming Northwest 3 to 5 mph late.

Mixing Height: 1500 Feet in the evening, lowering to around 700 feet after midnight.

Dispersion Index: 2-4 / Very Poor

LAVORI: 9

OUTPUTS

FIRE BEHAVIOR

GENERAL:

- Continued smoldering of heavy fuels (100 and 1000 hour) where residual heat exists. Small areas of backing and flanking fire could continue in the Chimney Branch/Cambric Branch drainages with ROS from .1 to 2 chains per hour and Flame Lengths of 1 to 2 feet. Low intensity uphill spread is possible if the fire establishes itself midslope or lower in these drainages (ROS – 2 to 3 ch/hr, Flame Length – 2 to 3 feet).
- Initial Attack fire behavior (for any potential new starts in hardwood leaf litter during peak burning period): ROS – 2 to 3 chains/hr. Flame Length – 2 to 3 feet.

SPECIFIC:

All Divisions: See general forecast above. All divisions should expect minimum fire behavior today.

AIR OPERATIONS:

- Expect some fog and drizzle in the morning then mostly cloudy in the afternoon.

SAFETY

- Be very cautious when driving this morning. Expect to see some areas of fog on your drive out to the fire.

Division Assignment List	1. Branch	2. Division/Group
---------------------------------	-----------	-------------------

A/B

3. Incident Name <p style="text-align: center;">TABLE ROCK</p>	4. Operational Period <p style="text-align: center;">11/22/13 Friday Day Shift 0700 - 1800</p>
---	---

5. Operations Personnel

Operations Chief	Peter Myers0-109.5/Greg Brooks0-122	Division/Group Supervisor	Dan Martin0-109.12
Planning Operations Chief	Pete Kubiak (0-109.6)	Division/Group Supervisor	Shane Paxton (t) 0-2.1
Planning Operations Chief	Julian Affuso 0-109.11	Safety Officer	Keith Jenkins 0-49 11/26

6. Resources Assigned this Period

Strike Team/Task Force/ Resource Designator	Leader	Num of Pers.	Trans. Y/N	Drop Off PT./Time	Pick Up PT./Time
(E-8) TNCNF Engine 662	(E-8.1) Bill Profit 11/26	3		0700	1800
(0-2) Smokey Mtn. Fuels Module	(0-2.6) Jordon Black 11/27	6		0700	1800
EMT	(0-8) Frank Abel 11/22	1		0700	1800
FOBS	(0-112) Carl Melear 12/02	1		0700	1800
FOBS (T)	(0-57) Matt Eldridge 11/26	1		0700	1800

7. Control Operations
Grid and Mop-up 150' in Divison A.

8. Special Instructions

- Identify Fallers within the Divison.
- M.I.S.T tactics, as appropriate.
- Maintain LCES.
- Medical emergencies need to contact Divison Sup.and follow Medical Plan, as appropriate.
- If bucket work is needed, make request through the Div. Sup.
- Each Divison will identify an "Incident within an Incident" IC for that Divison, being "_____".
- All Resources going to fire need to run through weed wash at ICP. Rehab lines according to plan.

9. Division/Group Communications Summary

Function	Frequency - RX	Frequency - TX	Tone	System	Channel	System	Channel
Command							
Tac 1	170.000	170.000			1		
Logistics							
Air to Ground	167.425	167.425			10		

Prepared by (Resource Unit Leader) Melonie Sellers	Approved by (Planning Section Chief) Phil Weston	Date Prepared 11/21/13	Time Prepared 1845
---	---	---------------------------	-----------------------

Division Assignment List	1. Branch	2. Division/Group D/G/H
---------------------------------	-----------	-----------------------------------

3. Incident Name TABLE ROCK	4. Operational Period 11/22/13 Friday Day Shift 0700 - 1800
---------------------------------------	---

5. Operations Personnel

Operations Chief	Peter Myers0-109.5/Greg Brooks0-122	Division/Group Supervisor	Kelly Cagle (0-19)
Planning Operations Chief	Pete Kubiak (0-109.6)	Air Attack Supervisor	
Planning Operations Chief	Julian Affuso 0-109.11	Safety Officer	Gary Mease 0-103 (12/01)

6. Resources Assigned this Period

Strike Team/Task Force/ Resource Designator	Leader	Num of Pers.	Trans. Y/N	Drop Off PT./Time	Pick Up PT./Time
(E-2) Engine T-6 #651	(0-2.2)Renardo Knight 11/25	2		0700	1800
(E-3) Engine T-6 Appalachian # 681	(0-58) Bryan Smith 11/26	2		0700	1800
(E-5) Engine T-6 Croatan #631	(E-5.1) Antonia Hill 11/26	3		0700	1800
(E-12) Engine T-6 Blue Ridge NPS	(0-46) Bob Cherry 11/28	3		0700	1800
Cherokee IHC	(0-5) Chris Witkus 11/28	9		0700	1800
Pat-Rick Module 1	(C-1.2) Garth Bennet 12/01	10		0700	1800
TFLD	(0-54) Greg Philipp 11/25	1		0700	1800
EMT	(0-62) Gerney Milner 11/26	1		0700	1800
(E-7) Dozer T-3				0700	1800
UTV				0700	1800

7. Control Operations
Mop-up and Control Division D.
Prep FDR 118 for future firing operations.
Stage E-2,E-3,E-7 at DP7. Mop-up fire edge from DP5 south to the Mountain Sea Trail.
Continue to assess and improve FDR 118.

8. Special instructions
Burke Co. Ambulance will be located at DP4. Identify Fallers within the Division Maintain LCES.
Medical emergencies need to contact Division Supervision and follow Medical Plan as appropriate.
Utilize EMT between divisions, as needed. If bucket work is needed, make request through the Div. Sup.
Each Division will identify an "Incident within an Incident". IC for that Division, being "_____".
Determine potential look-out locations. Identify black/burnt areas as safety zones from Chimney Gap South.
All Resources going to fire need to run through weed wash at ICP. Rehab lines according to plan.

9. Division/Group Communications Summary

Function	Frequency - RX	Frequency - TX	Tone	System	Channel	System	Channel
Command							
Tac 4	168.050	168.050			4		
Logistics							
Air to Ground	167.425	167.425			10		

Prepared by (Resource Unit Leader) Melonie Sellers	Approved by (Planning Section Chief) Phil Weston	Date Prepared 11/21/13	Time Prepared 1835
--	--	----------------------------------	------------------------------

Division Assignment List			1. Branch		2. Division/Group		
3. Incident Name TABLE ROCK			4. Operational Period 11/22/13 Friday Day Shift 0700 - 1800				E

5. Operations Personnel

Operations Chief	Peter Myers0-109.5/Greg Brooks0-122	Division/Group	Tom Crews (0-83)
Planning Operations Chief	Pete Kubiak 0-109.6	Air Attack Supervisor	
Planning Operations Chief	Julian Affuso 0-109.11	Safety Officer	Keith Jenkins (0-49) 11/26

6. Resources Assigned this Period

Strike Team/Task Force/ Resource Designator	Leader	Num of Pers.	Trans. Y/N	Drop Off PT./Time	Pick Up PT./Time
(E-4) Engine T-6 #671	(0-4.4) Jeff Owenby 11/25	3		0700	1800
(E-15) Engine T-6 #112	(0-69) Jason Boone 11/26	3		0700	1800
(C-1) T-2IA Pat-Rick Module 2	(C-1.1) Collin McLauchan 12/01	10		0700	1800
TFLD (t)	(E-5.2) David Nelson 11/26	1		0700	1800
EMT	(0-8) Frank Abel 11/22	2		0700	1800

7. Control Operations
 Mop-up and hold Divison break south to Outward Bound Camp.
 Patrol and Mop-up Rose Creek drainage to FDR 210b.
 Mop-up Hand and Dozer line 150' in.

8. Special Instructions
 Provide structure protection prep., as needed. Identify Fallers within the Divison.
 Maintain LCES. Medical emergencies need to contact Divison Supervisor and follow the Medical Plan, as appropriate.
 If bucket work is needed, make request through the Divison Supervisor.
 Each Divison will identify an "Incident within an Incident" IC for that Divison being "_____".
 Rehab lines according to plan.
 All Resources going to fire need to run through weed wash at ICP. Rehab lines according to plan.

9. Division/Group Communications Summary

Function	Frequency - RX	Frequency - TX	Tone	System	Channel	System	Channel
Command							
Tac 5	168.200	168.200			5		
Logistics							
Air to Ground	167.425	167.425			10		

Prepared by (Resource Unit Leader) Melonie Sellers	Approved by (Planning Section Chief) Phil Weston	Date Prepared 11/21/13	Time Prepared 1845
---	---	---------------------------	-----------------------

Division Assignment List			1. Branch		2. Division/Group F		
3. Incident Name TABLE ROCK			4. Operational Period 11/22/13 Friday Day Shift 0700 - 1800				
5. Operations Personnel							
Operations Chief		Peter Myers0-109.6/Greg Brooks0-122		Division/Group Supervisor		Dale Brittain (0-51)	
Planning Operations Chief		Pete Kubiak 109.6		Air Attack Supervisor			
Planning Operations Chief		Julian Affuso 109.11		Safety Officer		Mickey Bunton (0-48) 11/27	
6. Resources Assigned this Period							
Strike Team/Task Force/ Resource Designator		Leader		Num of Pers.	Trans. Y/N	Drop Off PT./Time	Pick Up PT./Time
(E-6) Engine T-6 Croatan #632		(E-6.1) Markeith Teel 11/26				0700	1800
(E-10) Engine T-6 CS/NWR #262		(E-10.1) Derrick Odegard 11/27		3		0700	1800
(E-11) Engine T-6 Savannah River #3		(E-11.1) Kenneth Aiken 11/27		3		0700	1800
(E-13) Engine T-6 Oconee #681		(E-13.1) Ed Burrel 11/27		3		0700	1800
(C-2) T-2IA OK-BIA		(0-2.1) Kerwin Williams 12/01		20		0700	1800
Dozer T-3 D&D Motors		(E-1) S. Young 11/28		2		0700	1800
READ		(0-105) Andrew Triplett 11/30		1		0700	1800
HEQB (t)		(0-84) Pete Powell 11/29		1		0700	1800
TFLD		(E-2.1) Chase Frisbee 11/25		1		0700	1800
TFLD (t)		(0-55) Forrest Sutton 11/25		1		0700	1800
EMT		(0-64) Kenneth Kessler 11/28		1		0700	1800
EMT		(0-63)Chris Warwnock 11/29		1		0700	1800
7. Control Operation Prep control line west of FDR 118 south of Linville River.							
8. Special Instructions Burke Co. Ambulance will be located at Wolf Pit (DP8). Identify Fallers within the Divison. M.I.S.T. tactics, as appropriate. Maintain LCES. Medical emergencies need to contact Divison Supervisor and follow Medical Plan, as appropriate. Each Divison will identify an "Incident within an Incident" IC for that Divison being "_____". Utilize the READ, as appropriate Resources leaving DIV F going to other Divisions, need to use engine at DP7 to weed wash to minimize invasive spread All Resources going to fire need to run through weed wash at ICP. Rehab lines according to plan.							
9. Division/Group Communications Summary							
Function	Frequency - RX	Frequency - TX	Tone	System	Channel	System	Channel
Command							
Tac 3	168.600	168.600			3		
Logistics							
Air-to Ground	167.425	167.425			10		
Prepared by (Resource Unit Leader) Melonie Sellers			Approved by (Planning Section Chief) Phil Weston			Date Prepared 11/21/13	Time Prepared 1802

AIR OPERATIONS SUMMARY

Prepared By: Mike Rock

Prepared Date: 11/21/13

Prepared Time: 1700

1. NAME: Catawba Helibase	2. OPS PERIOD DATE: Friday, Nov. 22, 2013	START TIME: 0800	END TIME: 1900	SUNRISE: 0710	SUNSET: 1716
3. REMARKS (Safety Notes, Hazards, Air Operations Special Equipment, etc.): Mission Request thru DIVS to HLB H1 - 35 53 6.73 X 81 52 19.83; H2 - 35 47 48.53 X 81 53 18.23; H3 - 35 49 49.02 X 81 51 39.05, H4 - 35 52 15.56 X 81 52 47.70, H5 - 35 48 35.96 X 81 53 44.96 (ddd° mm' ss.s")					5. TFR 3-9717 5500 AGL
X4. READY ALERT AIRCRAFT MEDIVAC or IA- Either depending availability					

6. PERSONNEL	NAME	PHONE #	7. FREQUENCIES	AM	FM	8. FIXED-WING- Type/ Make-Model/ N#/ Base
AOBD	Mike Rock	606-599-2377	AIR/ AIR FW			AIRTANKERS-
HEB2	Paul Borden	252-671-4576	AIR/ AIR RW. FF		122.925	LEAD PLANES-
HEB2(T)	Hans Egholm	585-278-4206	AIR/ GROUND		167.425 TXRX	
			COMMAND			Attached resources include Oak Hill
			DECK		163.100	Engine 4 (Dan) 828-448-0851
			TOLC		N/A	Dive Boat (John) 828-334-4190
						OTHER FW AIRCRAFT-

9. HELICOPTERS (Use Additional Sheets as Necessary)

FAA N#	TY	MAKE/ MODEL	BASE	AVAIL	START	Managers	FAA N#	T	MAKE/ MODEL	BASE	AVAIL	START	REMARKS
3HA	III	Bell 407	ICP-field	0800	0900	John Holloran							423-715-5428
8HX	II	Bell 205	ICP-field	0800	0900	Dennis Fogel							202-993-0211

10. TASK/ MISSION/ ASSIGNMENT (Type/ function includes: Air Tactical, Retardant, Recon, Personnel Transport, Bucket Operations, SAR, etc.)

TYPE/FUNCTION	NAME OF PERSONNEL OR CARGO (if applicable) or Instructions for tactical aircraft	MISSION START	FLY FROM	FLY TO

HEALTH AND SAFETY MESSAGE

INCIDENT: Table Rock

DATE: Friday, November 22, 2013

TIME: Day Shift

Major Hazards and Risks:

Driving

Loss of LCES

First of all...get there safely. Deer are chasing other deer this time of year! They can be seen about anywhere. Stay Alert!! Fog & Smoke combined, maintain your proper following distance and observe the speed limits. Drive defensively. There is no reason to take on risk when driving to an incident. Resist that urge to go faster than you should.

Weekend could bring increased traffic. Please report any unauthorized vehicles.

LCES. Make it mean something. Discuss Lookout needs. Ensure Communication. Identify your Escape Routes. Identify your Safety Zones. Just saying, "Be sure and establish LCES" doesn't get it.

Page 6 in the IRPG states that "LCES must be established and known to ALL firefighters BEFORE it is needed". Take some time to review "LCES" on Page 6 and "Safety Zones" on Page 7.

True or False...A Safety Zone is an area where a firefighter can survive without a fire shelter. What kind of an area are you looking for where you are working today? What kind of flame lengths could you experience in a pine plantation? Figure these things out ahead of time.

/s/Brad Lidell SOF2 & /s/David R. Bostic SOF2(T)

INCIDENT ACTION PLAN SAFETY ANALYSIS

1. Incident Name
Table Rock

2. Date
11/22/2013

3. Time
0700

LCES Analysis of Tactical Applications																				
Lookouts Communication Escape Routes Safety Zones						Other Risk Analysis														
Division / Group	Indirect Fireline	Downhill Fireline	Underslung Fireline	Mid-slop Fireline	Dozer Operations	Anchor Points	Unurned Area / Dirty Burn	Reburn Potential	Snags & Roliing Rocks	Smoke / Fog										
A/B		1,2, 3					1,2 4,6		1,2	1, 2, 7	LCES Mitigations 1. Establish & maintain LCES 2. Look Up, Look Down, Look Around 3. Ensure fireline is anchored.									
D/G/H	1,4, 6	1,2, 3			1,2		1,3, 4,5		2,4, 5	1, 2, 7										
E		1,2, 3							2,4, 5	1, 2, 7	4. Ensure FTRs have current fire WX.									4. Report all private vehicles on closed roads.
F	1,4, 6	1,2, 3		1,2, 3,4	1,2		1,3, 4,5		2,4, 5	1, 2, 7	5. Flag Hazard trees, post lookouts.									
											6. Utilize FOBS to watch for developing WX systems									
											7. Get off mountain before fog sets in. Drive with lights on, maintain proper following distance & reduce speed.									
Prepared by (Name and Position) /s/Brad Lidell SOF2 & /s/ David R. Bostic SOF2 (T)																				

MEDICAL PLAN	1. Incident Name	2. Date Prepared	3. Time Prepared	4. Operational Period					
	Table Rock	11/21/13	1800	ALL					
5. Incident Medical Aid Station									
Medical Aid Stations	Location						Paramedics		
							Yes	No	
Frank Abel 423-595-1578	See 204 for DIV assignment						X		
Jeremy Milner 720-227-5358	See 204 for DIV assignment							X	
Chris Warnock 231-920-8730	See 204 for DIV assignment							X	
Kenny Kessler 318-729-6442	See 204 for DIV assignment							X	
6. Transportation									
A. Ambulance Services									
Name	Address				Phone		Paramedics		
							Yes	No	
Burke County EMS	Morganton, NC				911 828-437-1911		X		
	<u>AIR</u> <u>AMBULANCES</u>								
MAMA - Asheville	Travel time 25-35 mins						X		
Wings Air Rescue – Johnson City, TN	Travel time 25-35 mins						X		
B. Incident Ambulances									
Name	Location						Paramedics		
							Yes	No	
Burke Co EMS	DP 4 and DP 8						X		
	<u>TECHNICAL RESCUE</u>								
NC H.A.R.T. Technical Rescue	Accessed by 911								
7. Hospitals									
Name	Address		Travel Time		Phone	Helipad		Burn Center	
			Air	Grnd		Yes	No	Yes	No
Grace Hospital	Morganton, NC 35° 43.34' 81° 39.17'		10m	45m	828-659-5175	X			X
Johnson City Medical Center Level 1	Johnson City, TN 36° 18.449' 82° 23.31'		25m	90m	423-431-6561	X			X
Memorial Mission Hospital Level II	Asheville, NC 35° 34.533' 82° 32.911'		25m	90m	828-213-1948	X			X
Wake Forest Baptist Level 1/ Burn Center	Winston Salem, NC 36° 5.39' 80° 16.02'		50m	180m	336-713-9000	X		X	

Injury Communication Procedure

The first person on scene contact should contact the DIVS The DIVS will contact Command in all injury situations.

DO NOT use the name of the injured individual over the radio.

In the event of a minor injury, as noted by the person calling in the medical emergency, so state when relaying information so a false sense of urgency is not produced.

Medical Information

Is the injury: Remote Location _____
Critical _____ Serious _____ Minor _____

Type of injury: _____

Is the patient conscious: Yes _____ No _____

Is the patient experiencing any difficulty breathing: Yes _____ No _____

Is there uncontrolled bleeding: Yes _____ No _____

Is an EMT present and giving treatment: Yes _____ No _____

Is an EMT needed: Yes _____ No _____

Is ALS (Advanced Life Support) needed: Yes _____ No _____

Specific location of patient(Lat/Long, DP, Helispot) _____ (Deg, Min.dec

Is a helicopter needed for Evacuation: Yes _____ NO _____

Name of radio contact, channel, or frequency: _____

Best route to patient for ground transportation: _____

All EMERGENCIES: -- Secure the area and identify witness for later investigation.

Keep an accurate log of events.

Medical Radio Procedures

In a medical emergency, communications will:

1. Immediately notify MEDL and Command and General Staff (ensure contact of DIVS, and EMT listed in medical plan). **The DIVS will command (or delegate) the incident response scene, coordinating with the accident EMT and MEDL.**

MEDL will:

insure all section chiefs are informed:

C&G Checklist: IC ___ Information Officer ___ Log Chief ___ Finance Section Chief ___ Ops Chief ___ Safety ___ Plans Chief ___ Security ___

2. Acquire pertinent medivac information on form above.

If air transportation is required, notify Air Ops about medical aircraft

Keep log of all emergency radio traffic, departure and arrival times, and other pertinent information.

INCIDENT RADIO COMMUNICATIONS PLAN

1. Incident Name
Table Rock

2. Date/Time Prepared
11/21/13

3. Operational Period Date/Time
11/22/13

4. BASIC RADIO CHANNEL UTILIZATION

Radio Type/Cache	Channel	Function	Frequency/Tone	Wide/ Narrow	Assignment	Remarks
King NIFC	Ch 1	Tac 1	Rx/Tx 170.000	N	Division A/B	
King NIFC	CH 2	A / G Secondary	Rx/Tx 166.675	N	Secondary	
King NIFC	CH 3	Tac 3	Rx/Tx 168.600	N	Division F	
King NIFC	CH 4	Tac 4	Rx/Tx 168.050	N	Division D/G/H	
King NIFC	CH 5	Tac 5	Rx/Tx 168.200	N	Division E	
King NIFC	CH 6	Clingman Repeater	Rx 168.725 Tone 103.5 Tx 172.225 Tone 136.5	N	Command	
King NIFC	CH 7	High Peak Repeater	Rx 168.725 Tone 103.5 Tx 172.225 Tone 103.5	N	Command	
King NIFC	CH 8	Grandmother Repeater	Rx 168.725 Tone 103.5 Tx 172.225 Tone 146.2	N	Command	
King NIFC	CH 9	A / G Forest	Rx/Tx 164.150	N	Forist IA	
King NIFC	CH 10	A / G Primary	Rx/Tx 167.425	N	Primary	
King NIFC	CH 11	Initial Attack	Rx/Tx 169.900	N	IA	
King NIFC	Ch 12	Open		N		
King NIFC	Ch 13/16	Open		N		

5. Prepared By (Communications Unit Leader)
ICP Communication 828-337-7998

ICS 205

NFS 1330

Table Rock Land Line Phone Numbers

Fire Information	828-432-9817
DEMOB	828-437-5743
Training	828-430-6951
Plans	828-438-1652
Finance Time	828-433-5118
Finance Cost	828-433-0349
Finance Fax #	828-433-5046
SITL/FBAN/IMET/LTAN	828-433-0351
Buying Team	828-439-2383
Buying FAX #	828-433-0441
Ordering	Please use # 404-354-5349 828-438-1747
Medical/Ground Support	MEDL Cell # 434-665-0444 828-430-6962
Facilities	828-433-4899

Table Rock Fire - Southern Area Type II Team - Cell Phone Numbers

<u>Name</u>	<u>Position</u>	<u>Number</u>
Parrish, Steve	ICT2	850-524-1244
Lidell, Brad	SOF2	812-583-5543
Strawser, Bonnie	PIO2	252-423-0815
Czernik, Helen	IBA2	252-619-0366
Kubiak, Peter	OSC2	404-661-4819
Rock, Mike	AOBD	606-599-2377
Weston, Phillip	PSC2	850-556-3684
Dybing, Peter	LSC2	772-284-3553
Kelley, Wanda	FSC2	423-584-1472
Brittain, Dale	DIVS	828-201-7913
Affuso, Julian	DIVS	850-570-9090
Martin, Daniel	DIVS	479-774-5793
Crews, Tom	DIVS	252-216-6361
Sellers, Melonie	RESL	601-508-8997
Barrett, William	RESL	478-689-5144
DeMatteis, Jeff	SITL	601-415-9080
Jarvis, Gary	FBAN	251-882-1084
Brown, Rusty	CTSP	478-973-6231
Davis, John	TNSP	231-878-0074
Noble, Caroline	LTAN	850-591-7122
Jussila, Jerry	LSC2	218-235-8983
Garrett, Larry	COML	404-354-5279
Waller, Todd	GSUL	501-337-6308
Matson, Gene-Paul	MEDL	434-665-0444
Cihlar, Duane	SPUL	218-370-1662
Blanks, Gregory	SECM	912-210-3976
Winkler, Kimberly	TIME	***_***_****
McDonald, Teresa	COMP/CLAIMS	352-454-5385
Bostic, Dave	SOF2(T)	540-312-4786
Williams, Michael	SCKN(T)/GISS	828-835-0094
Cyprian, Holly	COST(T)	928-919-3027
Brookshire, Kimberly	ORDM(T)	859-595-4005
Hinckley, Jennifer	PSC2 (T)	850-559-4611
Taylor, Frank	RADO	828-337-7998
Melear, Carl	FOBS	706-232-8988
Jelsema, Jonathon	IMET	240-778-5277
Woldu, Takele	BUYM	828-280-3052
Updegraff, Kelly	BUYM	912-271-1519
Brooks, Greg	OSC2(T)	828-421-5025

	A	B	C
1	Table Rock Fire Cell Phone Numbers		
2			
3	<u>Name</u>	<u>Position</u>	<u>Number</u>
4	Little, Steve	FLIA	828-778-2077
5	McFee, Dave	SOFR	828-208-9930
6	Larson, Nick	AADM	828-442-9768
7	Walker, Deborah	PIO2(T)	910-975-0803
8	Simon, Donald	PIO	910-975-1895
9	Triplett, Andrew	READ	601-209-4614
10	Finnan, David	READ	828-577-4481
11	Eller, Terry	Planning Ops	828-779-2081
12	Smith, Brian	DIV	828-284-7877
13	Paxton, Shane	DIVS A-B	865-414-6460
14	Frisbee, Chase	DIVS F-G	828-553-1055
15	Nelson, David	DIV E	252-571-2325
16	Phillip, Greg	DIVS I/A	828-460-0049
17	Cagle, Kelly	DIVS D-H	336-302-0343
18	Pullium, Eric	GIST	828-644-8966
19	Mayo, Jim	FACL	828-712-7762
20	Smallman, Dave	RCDM	828-778-2076
21	Roper, James	RCDM(t)	828-208-3782
22	Lyda-Taylor, Kerri	PTRC	828-776-5989
23	Walker, Mike	PA50	828-337-1312
24	Paul Borden	HEB2	252-671-4576
25	Rhea, Rusty	HEBM	828-273-4322
26	Egholm, Hans	HMGB	585-278-4206
27	Murphy, Jerry	HMGB	828-208-1768
28	Able, Frank	EMTF	423-595-1578
29	Kessler, Kenneth	EMTF	318-729-6442
30	Crisp, Jason	Lead LEO	828-442-2470
31	Vines, Nick	Night SEC1	423-297-3181
32	Barnett, Steve	Night SEC1	252-671-5787
33	Barber, Chuck	Camp Crew	423-773-6789
34			
35	ICP FAX		828-438-5287

TRAINING

NOVEMBER 22

Incident Training Unit Purpose and Roles – part 2

Yesterday's message was about paper production; today's outlines a few of the more abstract and enjoyable functions (for the TNSP, at least) of formal incident training.

First of all, the fact that there is even a place at the ICP set aside for "TRAINING" and a person called the "INCIDENT TRAINING SPECIALIST" who occupies the spot, helps bring structure to the assignment and the trainee/trainer relationship by formalizing expectations and responsibilities. In other words, there are goals and objectives to achieve over the course of the assignment. That's good because training happens, performance is measured, and progress toward qualification is more likely to be accomplished. Finally, the TNSP will also check the trainee's position task book at the close-out to help ensure it's been accurately brought up to date.

The enjoyable part of the job for the TNSP includes helping folks navigate the Incident Qualification and Certification System and providing answers to some questions.

Examples –

What jobs are out there and how are they organized in an Incident Command System structure?

How does a person become qualified in a particular position?

What formal courses do I need to take?

What are the prerequisite positions?

What other training and certifications are there which may help move me along more quickly?

This is the fun stuff because TNSPs get to meet with people one-on-one and have actual conversations about meaningful subjects. So keep on coming around.

"They may forget what you said, but they will never forget how you made them feel." - Carl W. Buechner

TENTATIVE DMOB LIST

Based on 14 day assignment

<u>Number</u>	<u>ResourceName</u>	<u>KindCode</u>	<u>UnitID</u>	<u>TravelMethod</u>	<u>Jetport</u>	<u>Travel Date</u>
O-33	MATOY, BRIAN	HMGB	TNCNF	AOV		11/23/2013
O-8	ABEL, FRANK	EMTF	TNCNF	AOV		11/23/2013
O-55	SUTTON, FORREST	ICT4	NCNCF	AOV		11/24/2013
E-12	ENG 61	ENG6	NCBRP	AOV		11/24/2013
O-46	CHERRY, ROBERT	ENGB	NCBRP	AOV		11/24/2013
O-47	MCMANN, JOSHUA	ENGB	NCBRP	AOV		11/24/2013
O-5	CHEROKEE IHC SHORT CREW	HC1	TNCNF	AOV		11/26/2013
O-78	KEYES, MATT	FFT2	NCNCF	AOV		11/26/2013
O-35	WILLIAMS, MICHAEL	SCKN	NCNCF	AOV		11/26/2013
E-4	PNF-671	ENG6	NCNCF	AOV		11/26/2013
O-54	PHILIPP, GREG	TFLD	NCNCF	AOV		11/26/2013
O-26	LITTLE, STEVE	LOFR	NCNCF	AOV		11/26/2013
O-25	LYDA-TAYLOR, KERRI	PTRC	NCNCF	AOV		11/26/2013
O-11	CHAMPION, BILL	ICT3	NCNCF	AOV		11/26/2013
O-3	PULLIUM, ERIC	GISS	NCNCF	AOV		11/26/2013
E-3	NCF-681	ENG6	NCNCF	AOV		11/26/2013
E-3.1	THOMAS, BRYAN	ENGB	NCNCF	AOV		11/26/2013
E-3.2	HENSLEY, ROBERT	ENGB	NCNCF	AOV		11/26/2013
E-2	NCF E-651	ENG6	NCNCF	AOV		11/26/2013
E-2.1	FRISBEE, CHASE	ENGB	NCNCF	AOV		11/26/2013
E-2.2	KNIGHT, RENARDO	ENGB	NCNCF	AOV		11/26/2013
E-4.2	JOHNSON, ERIC	ENGB	NCNCF	AOV		11/26/2013
E-4.3	WORLEY, CHRISTOPHER	FFT2	NCNCF	AOV		11/26/2013

**Please call DMOB with any questions or concerns. Phone number is 828-437-5743.
For after hours emergencies, call 478-689-5144.**

If you are flying, please contact DMOB at least 72 hours prior to travel date.

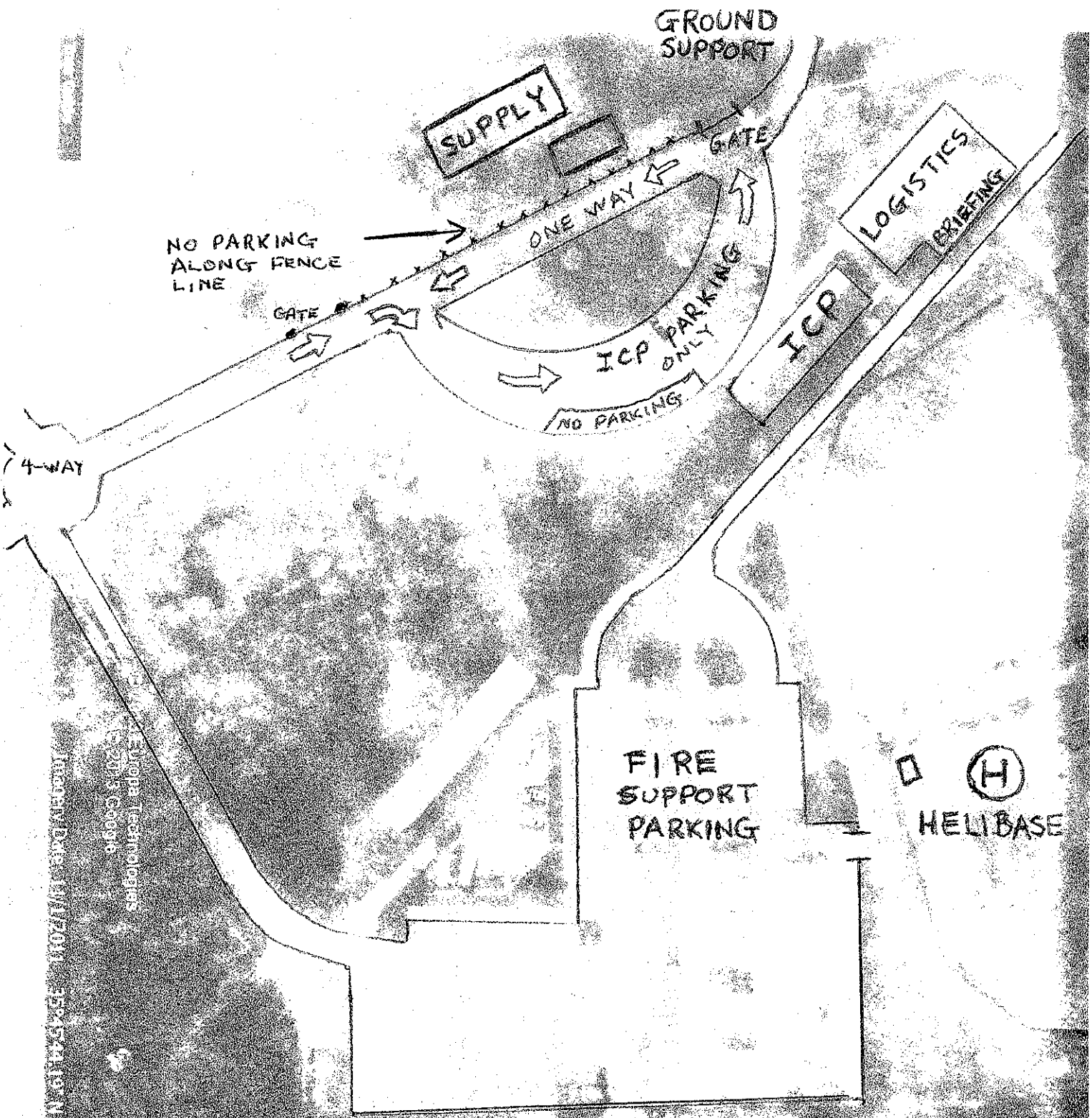


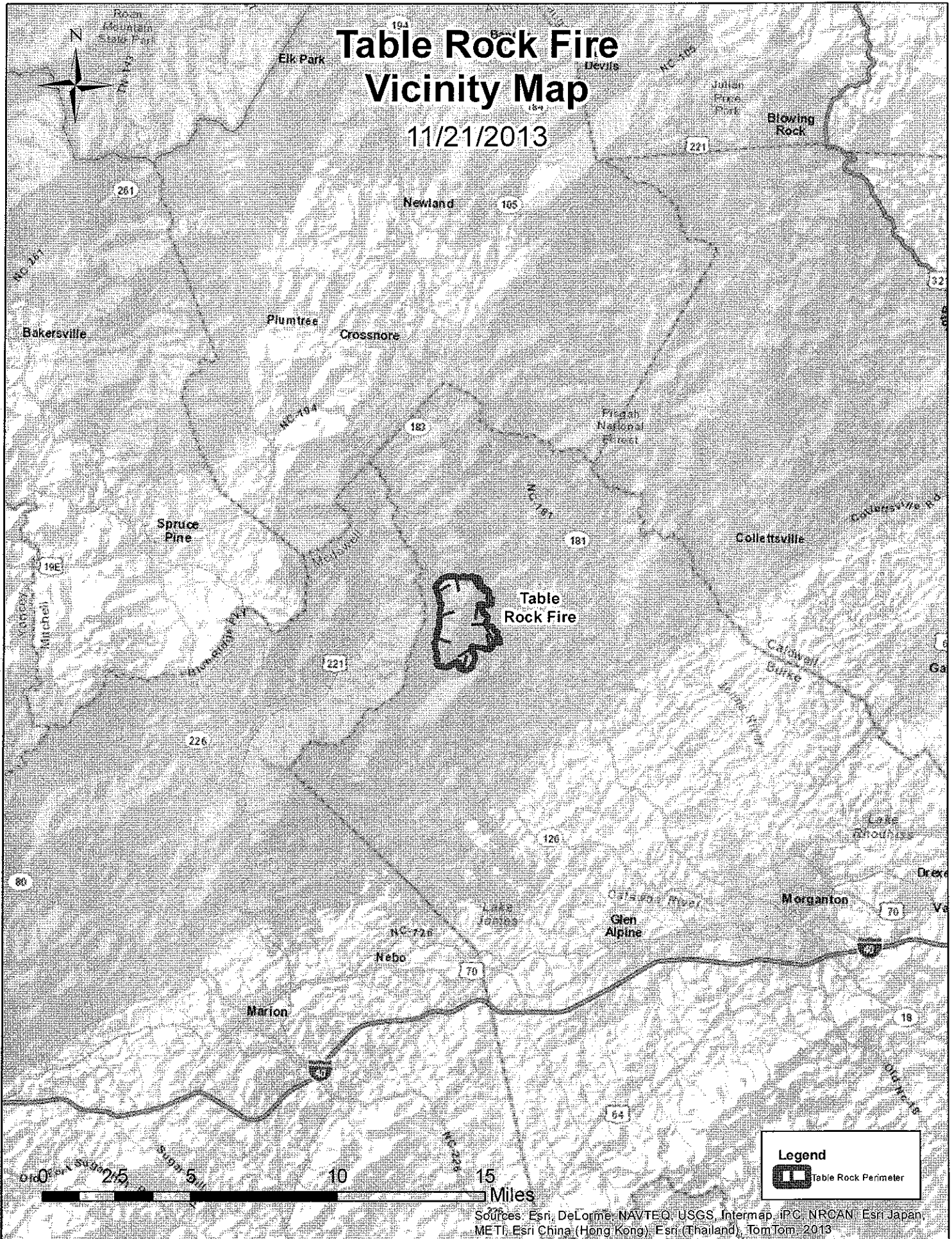
TABLE ROCK ICP
SOUTHERN REGION TYPE II - PARRISH


Map data © 2014 Google, Imagery © 2014 Google, Terrain © 2014 Google, Street View © 2014 Google

Google

Table Rock Fire Vicinity Map

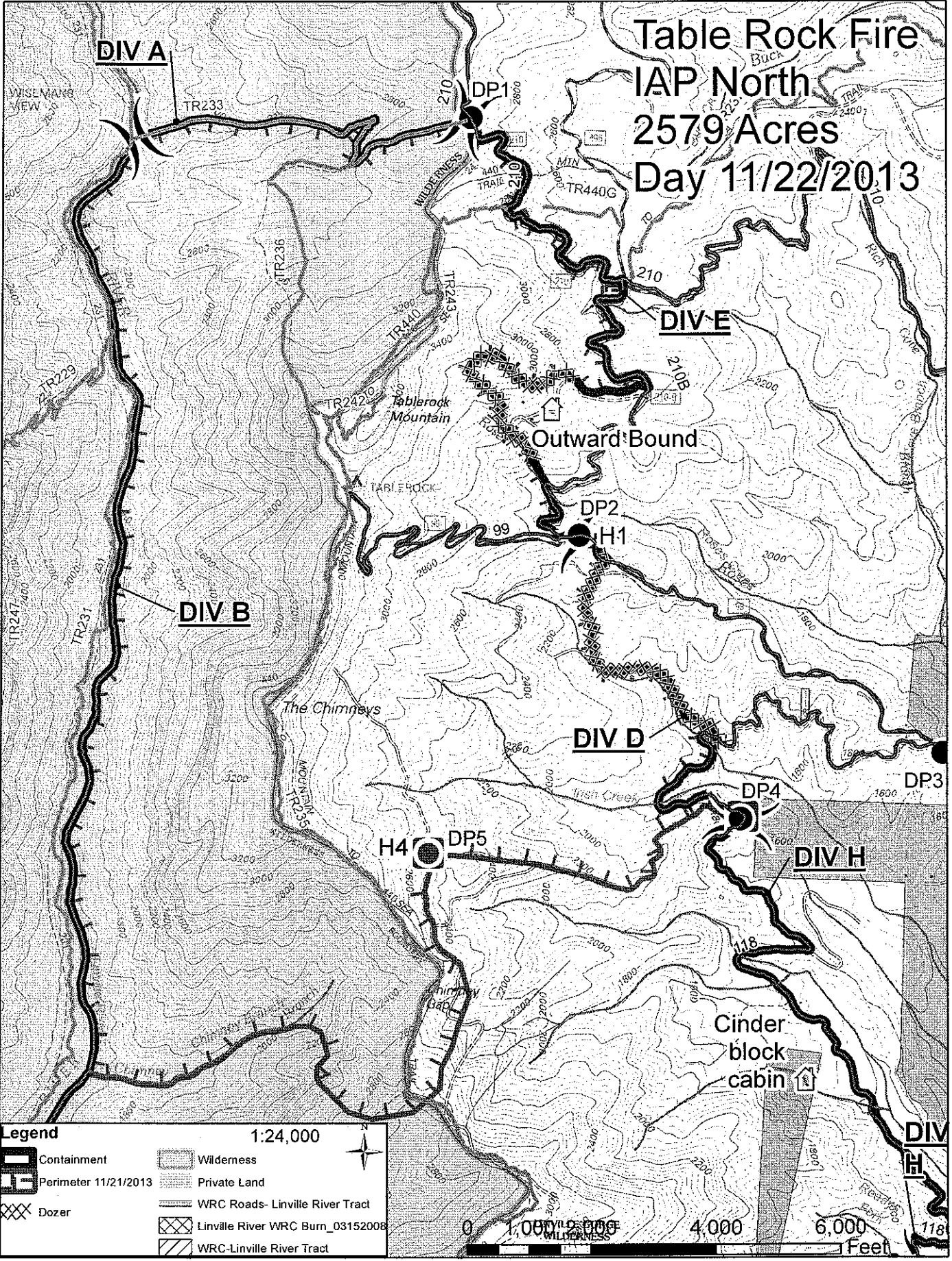
11/21/2013



Legend
 Table Rock Perimeter

Sources: Esri, DeLorme, NAVTEQ, USGS, Intermap, iPC, NRCAN, Esri Japan, METI, Esri China (Hong Kong), Esri (Thailand), TomTom, 2013

Table Rock Fire IAP North 2579 Acres Day 11/22/2013

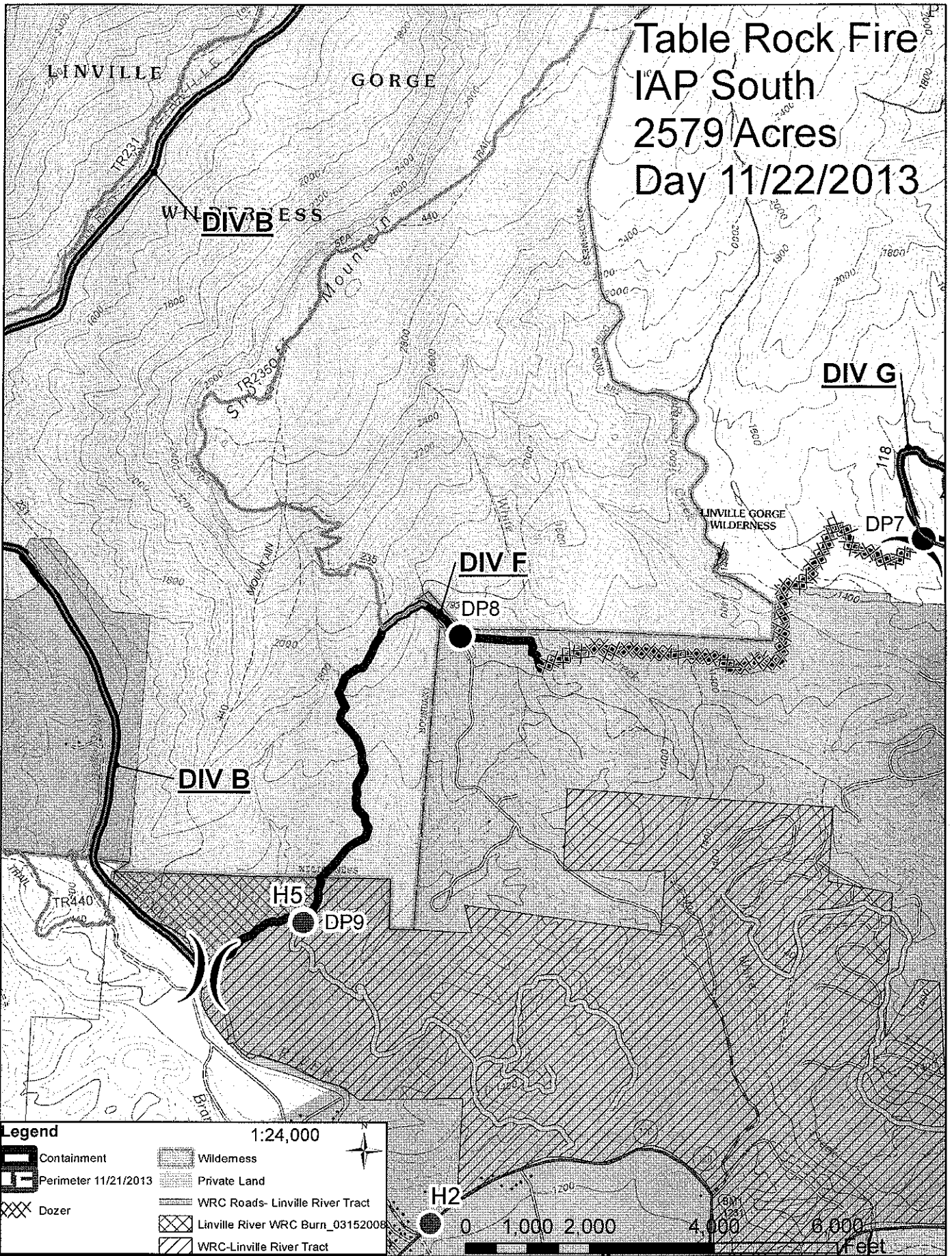


Legend 1:24,000

	Containment		Wilderness
	Perimeter 11/21/2013		Private Land
	Dozer		WRC Roads- Linville River Tract
			Linville River WRC Burn_03152008
			WRC-Linville River Tract



Table Rock Fire IAP South 2579 Acres Day 11/22/2013



Legend 1:24,000

	Containment		Wilderness
	Perimeter 11/21/2013		Private Land
	Dozer		WRC Roads- Linville River Tract
			Linville River WRC Burn_03152008
			WRC-Linville River Tract

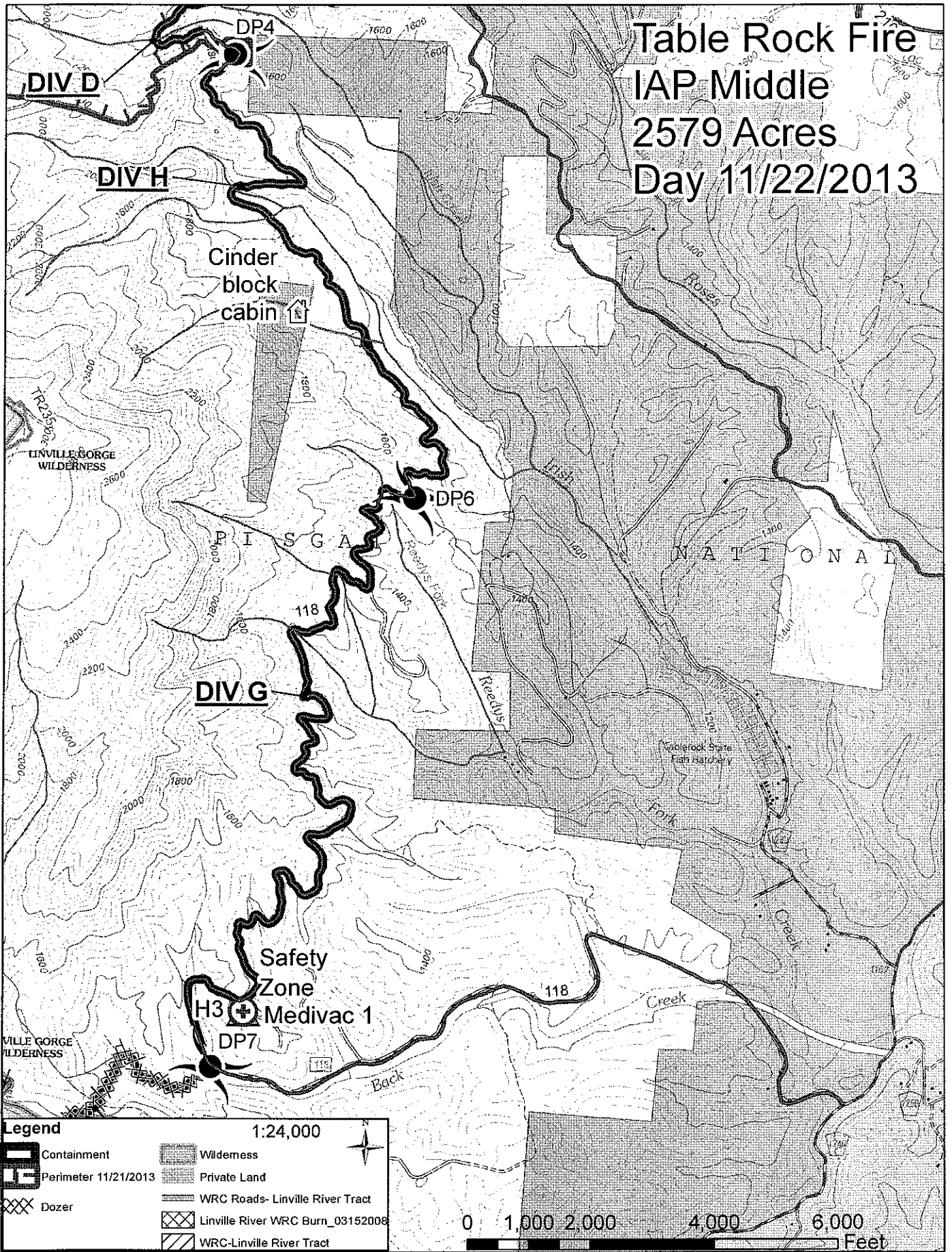
0 1,000 2,000 4,000 6,000 Feet

H2

Table Rock Fire IAP East 2579 Acres Day 11/22/2013



Table Rock Fire IAP Middle 2579 Acres Day 11/22/2013



Legend 1:24,000

	Containment		Wilderness
	Perimeter 11/21/2013		Private Land
	Dozer		WRC Roads- Linville River Tract
			Linville River WRC Burn_03152008
			WRC-Linville River Tract



UNIT LOG	1. Incident Name	2. Date Prepared	3. Time Prepared
4. Unit Name/Designators	5. Unit Leader (Name and Position)		6. Operational Period

7. Personnel Roster Assigned		
Name	ICS Position	Home Base

8. Activity Log	
Time	Major Events

9. Prepared By:	
------------------------	--