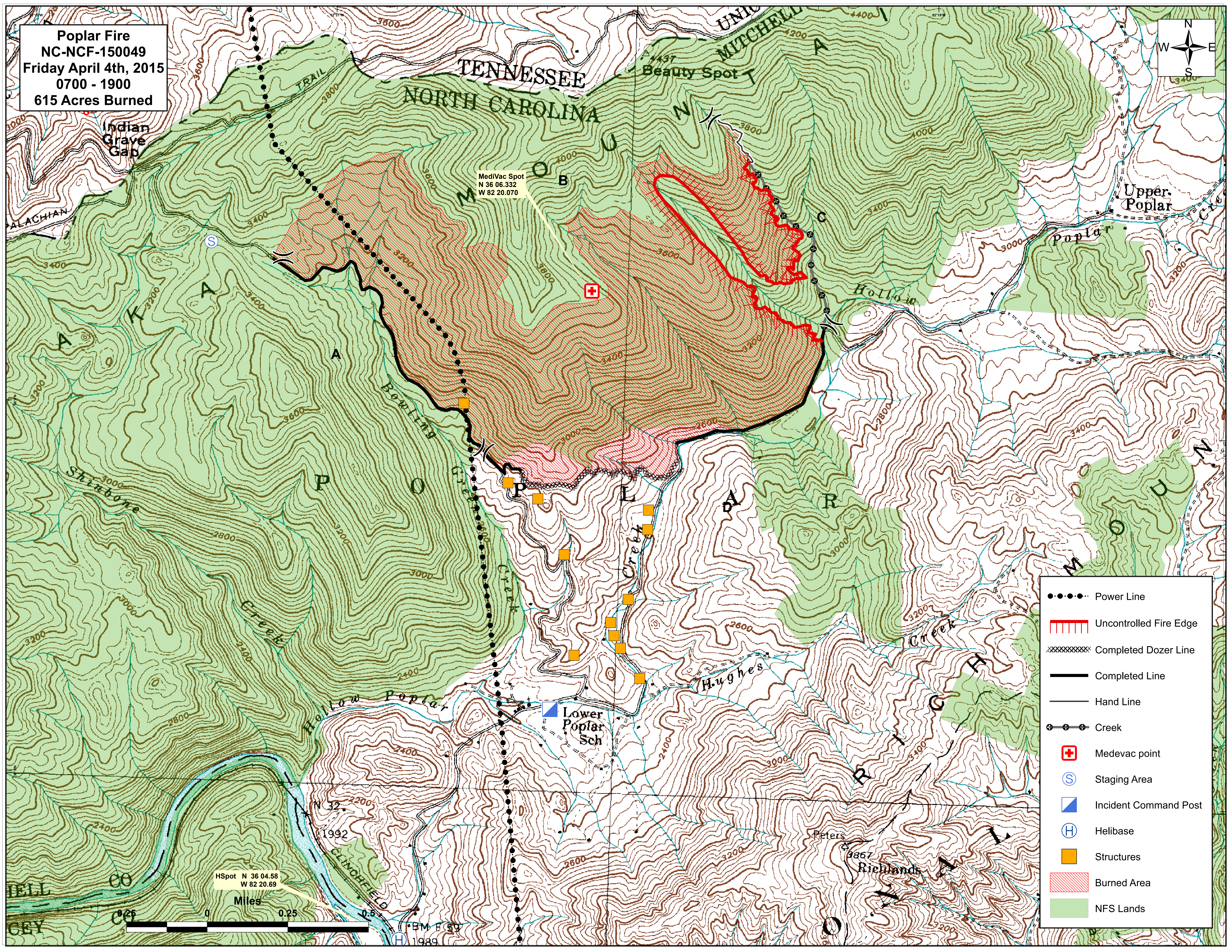
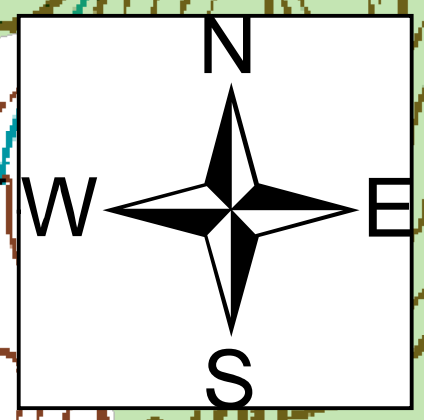


Poplar Fire  
 NC-NCF-150049  
 Friday April 4th, 2015  
 0700 - 1900  
 615 Acres Burned



- Power Line
- Uncontrolled Fire Edge
- Completed Dozer Line
- Completed Line
- Hand Line
- Creek
- Medevac point
- Staging Area
- Incident Command Post
- Helibase
- Structures
- Burned Area
- NFS Lands

HSpot N 36 04.58  
 W 82 20.69

Miles



FBI M F 39  
 H 1989

MediVac Spot  
 N 36 06.332  
 W 82 20.070

Indian  
 Grave  
 Gap

Upper  
 Poplar

Lower  
 Poplar  
 Sch

Peters  
 Richlands

Poplar Fire  
 NC-NCF-150049  
 Friday April 4th, 2015  
 0700 - 1900  
 615 Acres Burned