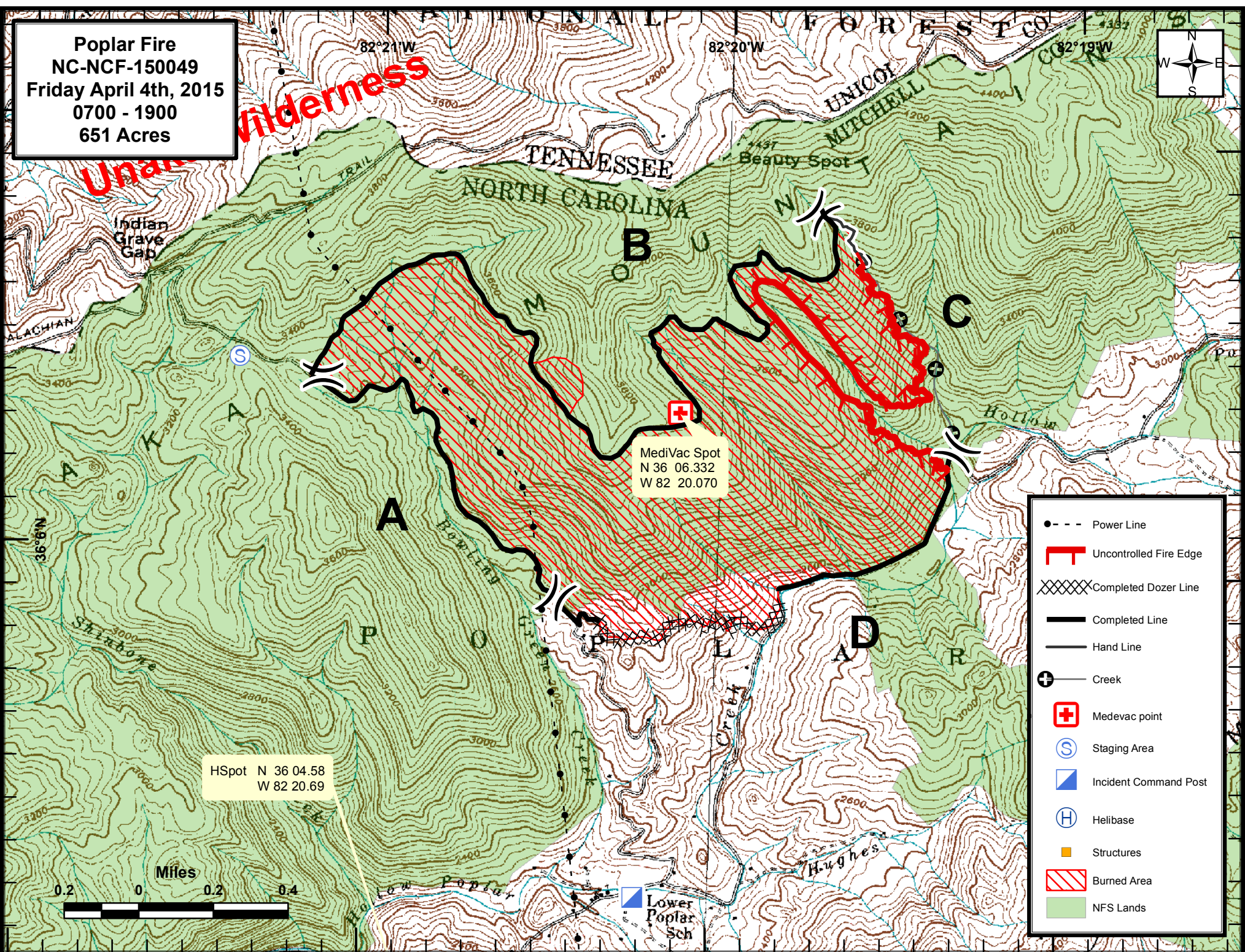


Poplar Fire
NC-NCF-150049
Friday April 4th, 2015
0700 - 1900
651 Acres



HSpot N 36 04.58
 W 82 20.69

MediVac Spot
 N 36 06.332
 W 82 20.070

- Power Line
- Uncontrolled Fire Edge
- Completed Dozer Line
- Completed Line
- Hand Line
- Creek
- Medevac point
- Staging Area
- Incident Command Post
- Helibase
- Structures
- Burned Area
- NFS Lands

