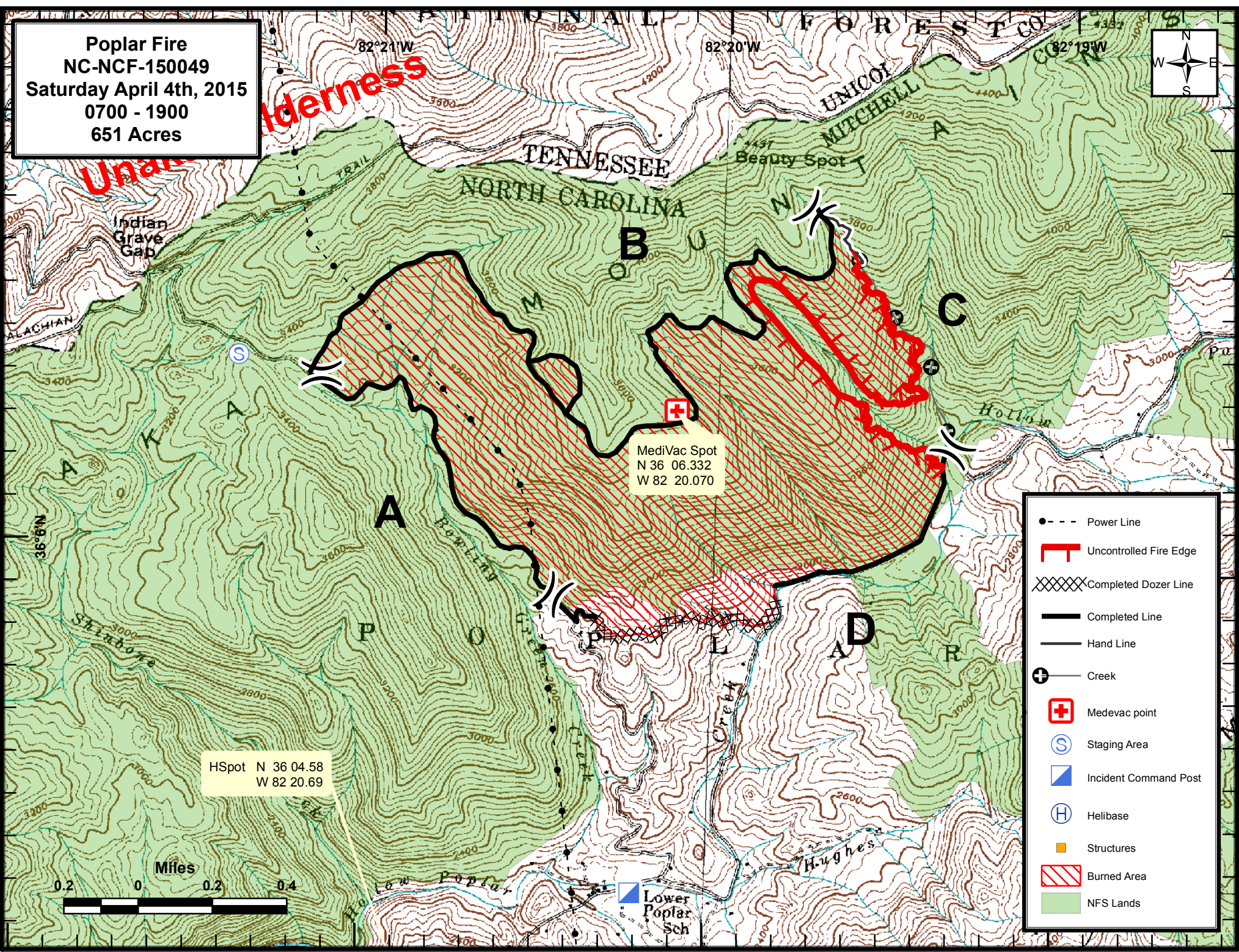


**Poplar Fire**  
**NC-NCF-150049**  
**Saturday April 4th, 2015**  
**0700 - 1900**  
**651 Acres**



MediVac Spot  
 N 36 06.332  
 W 82 20.070

HSpot N 36 04.58  
 W 82 20.69

- - - - Power Line
- Uncontrolled Fire Edge
- Completed Dozer Line
- Completed Line
- Hand Line
- Creek
- Medevac point
- Staging Area
- Incident Command Post
- Helibase
- Structures
- Burned Area
- NFS Lands

