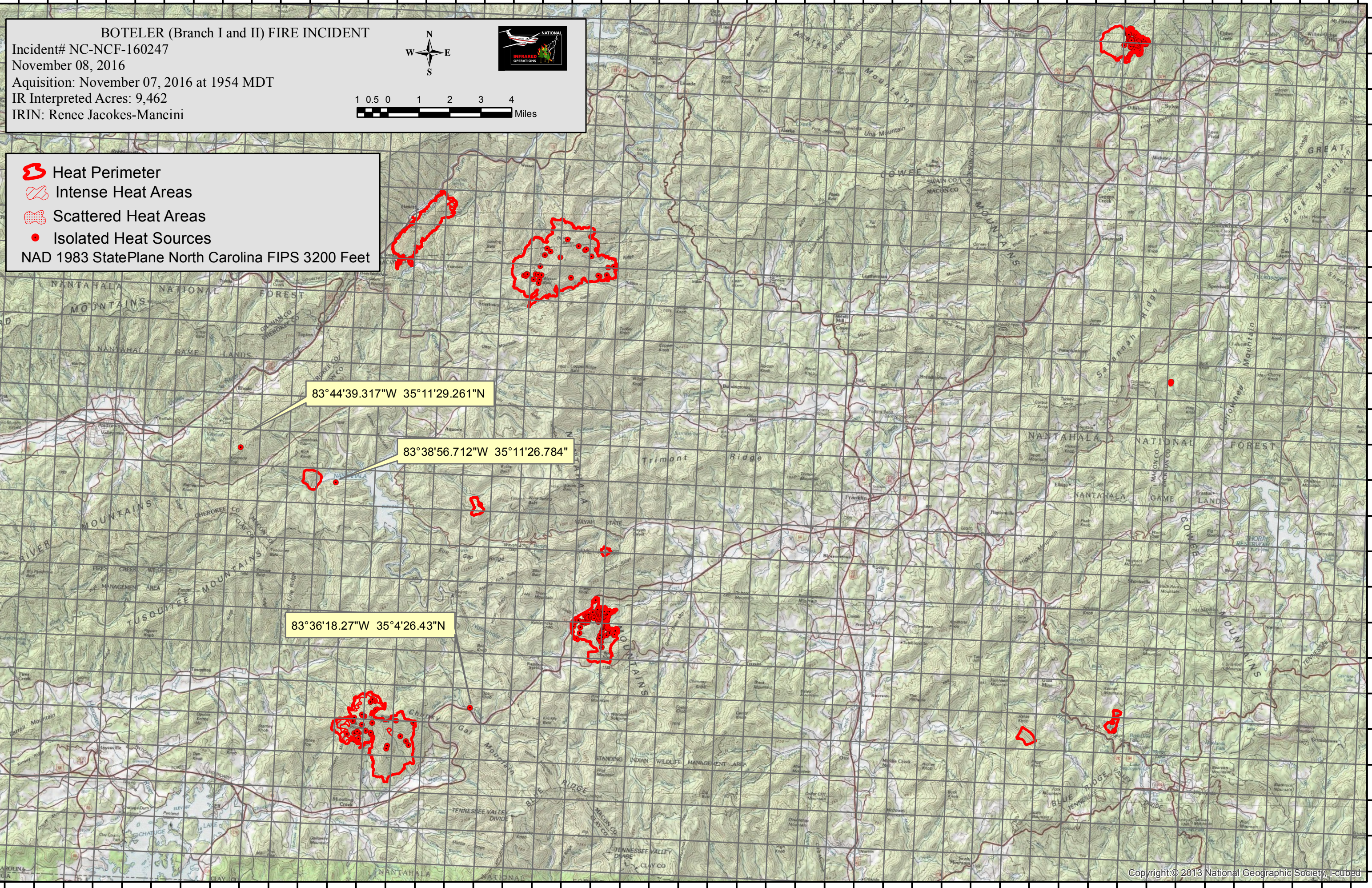



83°53'0"W 83°51'0"W 83°49'0"W 83°47'0"W 83°45'0"W 83°43'0"W 83°41'0"W 83°39'0"W 83°37'0"W 83°35'0"W 83°33'0"W 83°31'0"W 83°29'0"W 83°27'0"W 83°25'0"W 83°23'0"W 83°21'0"W 83°19'0"W 83°17'0"W 83°15'0"W 83°13'0"W 83°11'0"W 83°9'0"W 83°7'0"W







BOTELER (Branch I and II) FIRE INCIDENT
 Incident# NC-NCF-160247
 November 08, 2016
 Aquisition: November 07, 2016 at 1954 MDT
 IR Interpreted Acres: 9,462
 IRIN: Renee Jacokes-Mancini

N
W E
S

1 0.5 0 1 2 3 4 Miles



 Heat Perimeter
 Intense Heat Areas
 Scattered Heat Areas
 Isolated Heat Sources
 NAD 1983 StatePlane North Carolina FIPS 3200 Feet

83°44'39.317"W 35°11'29.261"N

83°38'56.712"W 35°11'26.784"

83°36'18.27"W 35°4'26.43"N

83°51'0"W 83°49'0"W 83°47'0"W 83°45'0"W 83°43'0"W 83°41'0"W 83°39'0"W 83°37'0"W 83°35'0"W 83°33'0"W 83°31'0"W 83°29'0"W 83°27'0"W 83°25'0"W 83°23'0"W 83°21'0"W 83°19'0"W 83°17'0"W 83°15'0"W 83°13'0"W 83°11'0"W 83°9'0"W 83°7'0"W