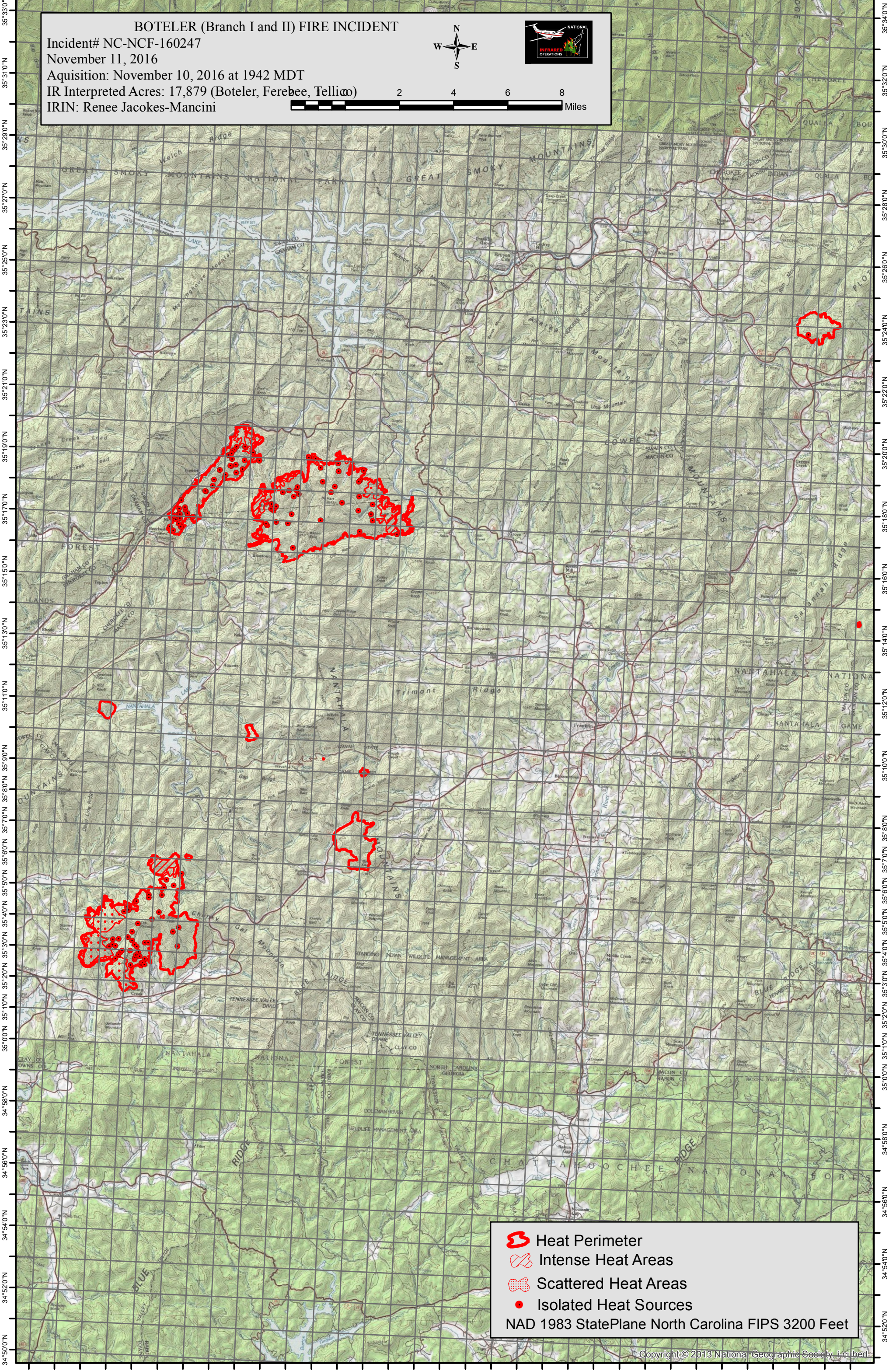


83°46'0"W 83°44'0"W 83°42'0"W 83°40'0"W 83°38'0"W 83°36'0"W 83°34'0"W 83°32'0"W 83°30'0"W 83°28'0"W 83°26'0"W 83°24'0"W 83°22'0"W 83°20'0"W 83°18'0"W 83°16'0"W 83°14'0"W



BOTELER (Branch I and II) FIRE INCIDENT

Incident# NC-NCF-160247





November 11, 2016

Aquisition: November 10, 2016 at 1942 MDT

IR Interpreted Acres: 17,879 (Boteler, Ferebee, Telli)

IRIN: Renee Jacokes-Mancini



-  Heat Perimeter
 -  Intense Heat Areas
 -  Scattered Heat Areas
 -  Isolated Heat Sources
- NAD 1983 StatePlane North Carolina FIPS 3200 Feet

83°44'0"W 83°42'0"W 83°40'0"W 83°38'0"W 83°36'0"W 83°34'0"W 83°32'0"W 83°30'0"W 83°28'0"W 83°26'0"W 83°24'0"W 83°22'0"W 83°20'0"W 83°18'0"W 83°16'0"W 83°14'0"W