
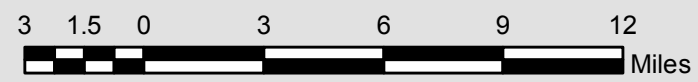
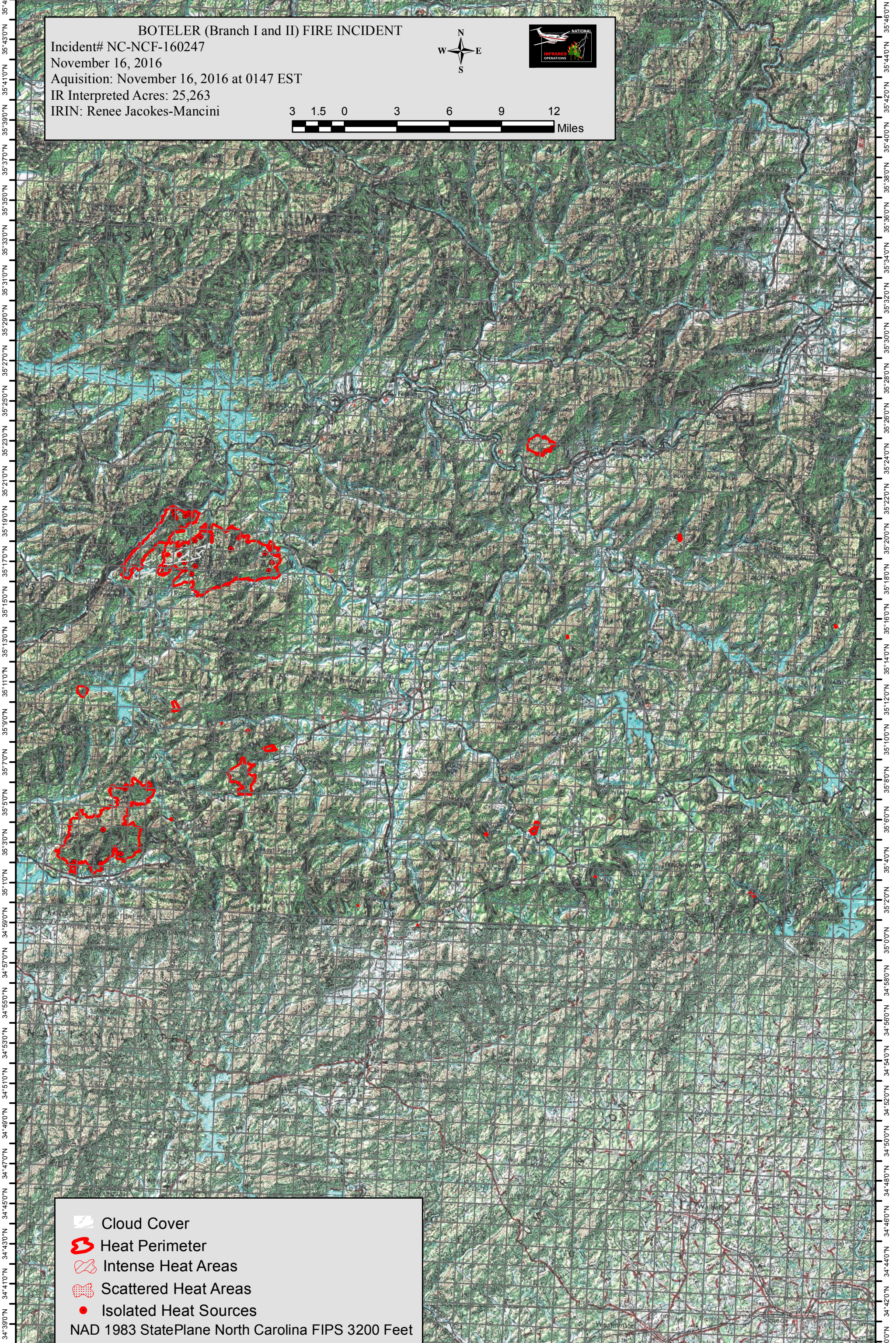


83°47'0"W 83°44'0"W 83°41'0"W 83°38'0"W 83°35'0"W 83°32'0"W 83°29'0"W 83°26'0"W 83°23'0"W 83°20'0"W 83°17'0"W 83°14'0"W 83°11'0"W 83°8'0"W 83°6'0"W 83°4'0"W 83°2'0"W 82°59'0"W 82°56'0"W

BOTELER (Branch I and II) FIRE INCIDENT
 Incident# NC-NCF-160247
 November 16, 2016
 Aquisition: November 16, 2016 at 0147 EST
 IR Interpreted Acres: 25,263
 IRIN: Renee Jacokes-Mancini

-  Cloud Cover
-  Heat Perimeter
-  Intense Heat Areas
-  Scattered Heat Areas
-  Isolated Heat Sources

NAD 1983 StatePlane North Carolina FIPS 3200 Feet

83°44'0"W 83°41'0"W 83°38'0"W 83°35'0"W 83°32'0"W 83°29'0"W 83°26'0"W 83°23'0"W 83°20'0"W 83°17'0"W 83°14'0"W 83°11'0"W 83°9'0"W 83°7'0"W 83°5'0"W 83°3'0"W 83°1'0"W 82°59'0"W 82°56'0"W 82°53'0"W