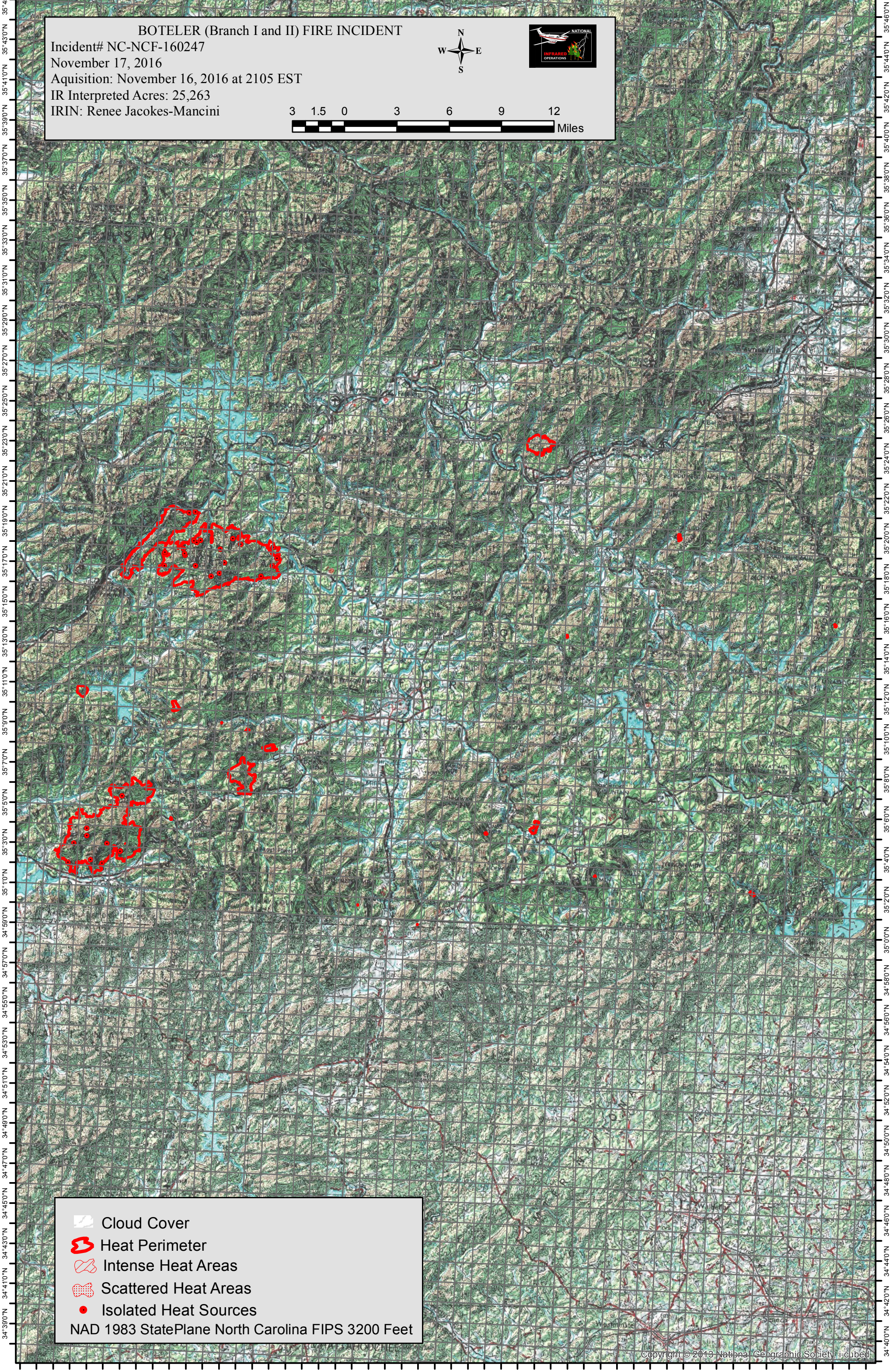
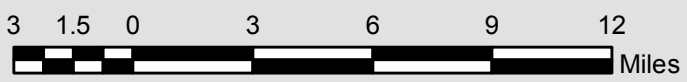


83°47'0"W 83°44'0"W 83°41'0"W 83°38'0"W 83°35'0"W 83°32'0"W 83°29'0"W 83°26'0"W 83°23'0"W 83°20'0"W 83°17'0"W 83°14'0"W 83°11'0"W 83°8'0"W 83°6'0"W 83°4'0"W 83°2'0"W 82°59'0"W 82°56'0"W

**BOTELER (Branch I and II) FIRE INCIDENT**  
 Incident# NC-NCF-160247  
 November 17, 2016  
 Acquisition: November 16, 2016 at 2105 EST  
 IR Interpreted Acres: 25,263  
 IRIN: Renee Jacokes-Mancini



- Cloud Cover
  - Heat Perimeter
  - Intense Heat Areas
  - Scattered Heat Areas
  - Isolated Heat Sources
- NAD 1983 StatePlane North Carolina FIPS 3200 Feet

83°44'0"W 83°41'0"W 83°38'0"W 83°35'0"W 83°32'0"W 83°29'0"W 83°26'0"W 83°23'0"W 83°20'0"W 83°17'0"W 83°14'0"W 83°11'0"W 83°9'0"W 83°7'0"W 83°5'0"W 83°3'0"W 83°1'0"W 82°59'0"W 82°56'0"W 82°53'0"W