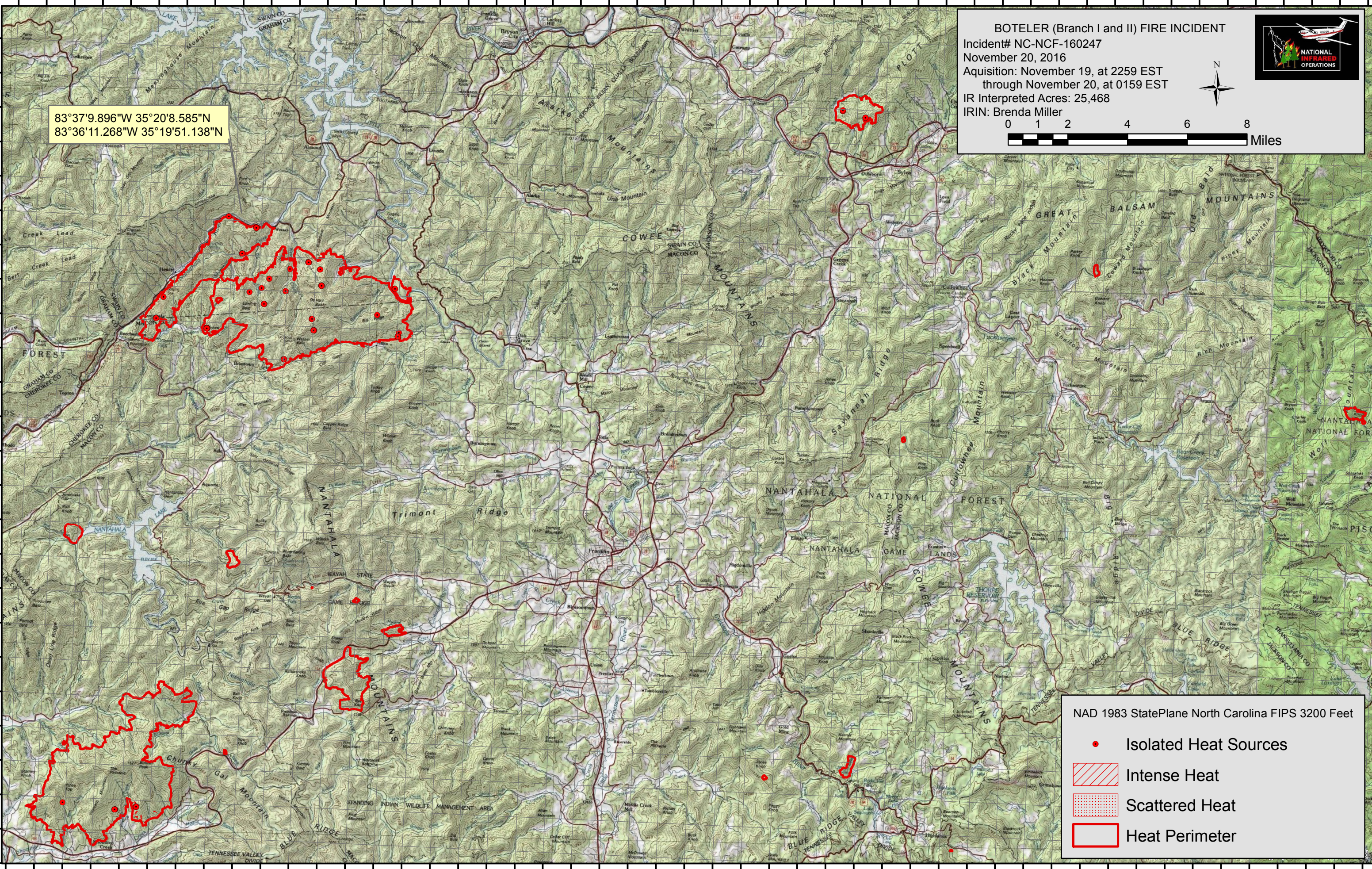





83°45'0"W 83°44'0"W 83°43'0"W 83°42'0"W 83°41'0"W 83°40'0"W 83°39'0"W 83°38'0"W 83°37'0"W 83°36'0"W 83°35'0"W 83°34'0"W 83°33'0"W 83°32'0"W 83°31'0"W 83°30'0"W 83°29'0"W 83°28'0"W 83°27'0"W 83°26'0"W 83°25'0"W 83°24'0"W 83°23'0"W 83°22'0"W 83°21'0"W 83°20'0"W 83°19'0"W 83°18'0"W 83°17'0"W 83°16'0"W 83°15'0"W 83°14'0"W 83°13'0"W 83°12'0"W 83°11'0"W 83°10'0"W 83°9'0"W 83°8'0"W 83°7'0"W 83°6'0"W 83°5'0"W 83°4'0"W 83°3'0"W 83°2'0"W 83°1'0"W 82°59'0"W 82°58'0"W 82°57'0"W



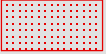



83°37'9.896"W 35°20'8.585"N  
83°36'11.268"W 35°19'51.138"N

**BOTELER (Branch I and II) FIRE INCIDENT**  
 Incident# NC-NCF-160247  
 November 20, 2016  
 Acquisition: November 19, at 2259 EST  
 through November 20, at 0159 EST  
 IR Interpreted Acres: 25,468  
 IRIN: Brenda Miller

NAD 1983 StatePlane North Carolina FIPS 3200 Feet

-  Isolated Heat Sources
-  Intense Heat
-  Scattered Heat
-  Heat Perimeter