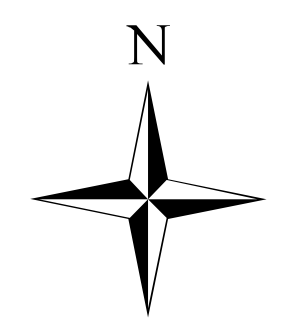


Boteler Fire
 11/7/2016
 Day Shift
 IR Fire Perimeter
 as of
 11/06/2016 2113

Boteler Fire 1,961 ac
 Buck Creek 8 ac



Briefing Map

NC-NCF-160247

- () Division Break
- Incident Command Post
- Drop Point
- Ⓡ Comm Site
- ▭ Uncontrolled Fire Edge
- XXXX Completed Dozer Line
- Completed Line
- H-H-H Hand Line
- R - Road as Completed Line
- ✕ Proposed Dozer Line
- Proposed Fireline
- Bladed Road
- ⋯ Power Line
- - - Trail
- Roadbed
- ▭ Containment Perimeter
- Helispot
- IR Data 11/6/2016 2119
- Isolated Heat Sources
- ▨ Scattered Heat
- ▨ Intense Heat
- ▭ Heat Perimeter

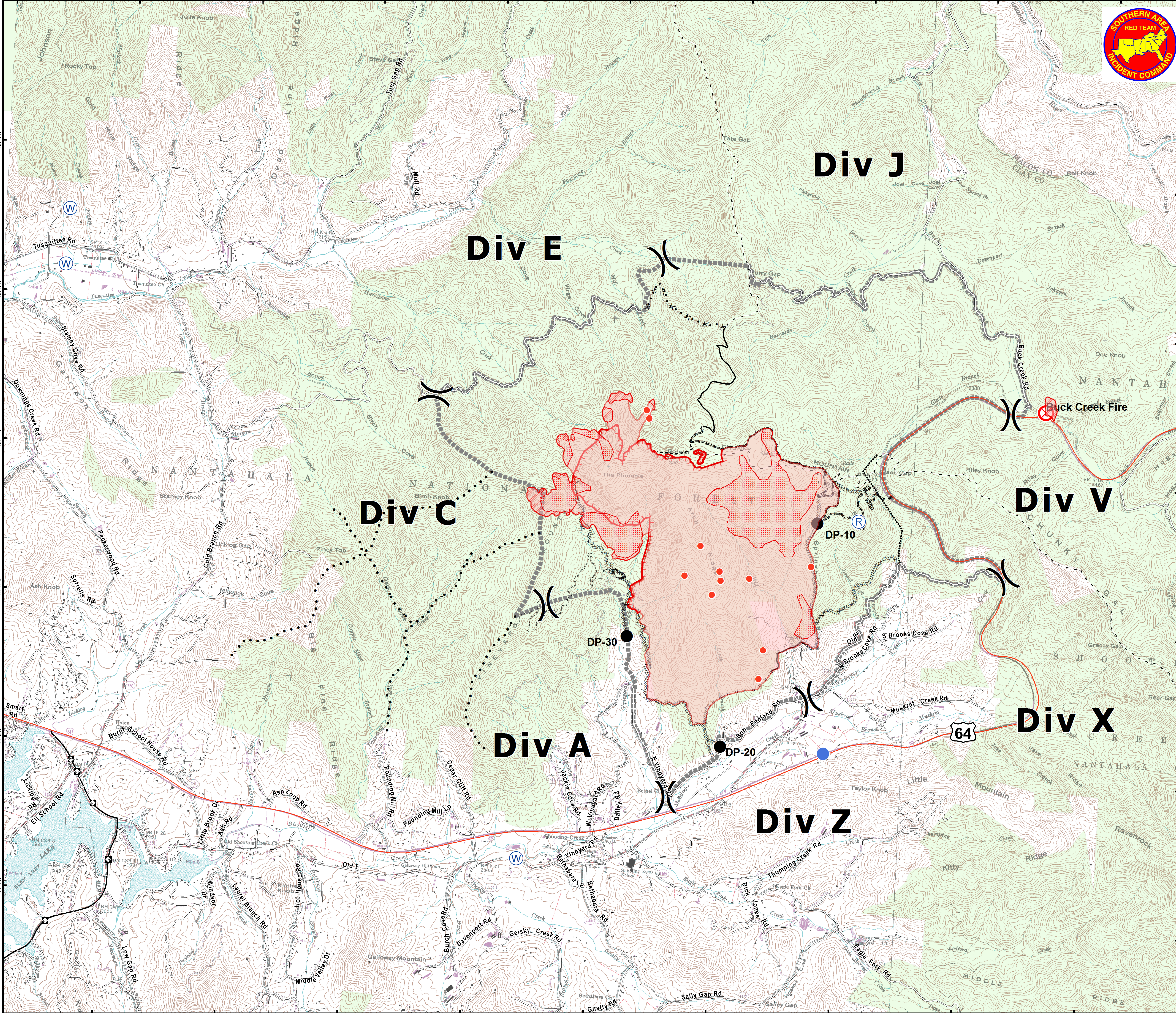
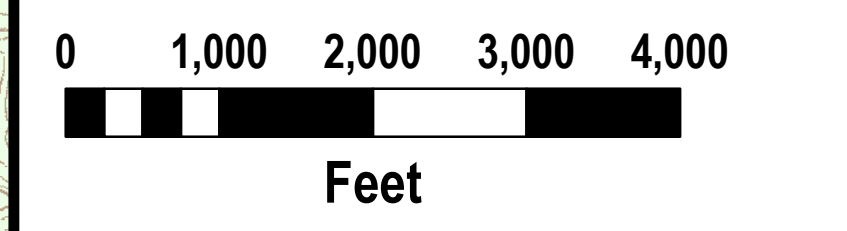


Download a GeoPDF

Information shown is based on the best available data at the time of map production.

25 ac

11/7/2016 6:31:53 AM
 Map Datum: NAD83 Feet
 Author: D. Paris, GISS(T)



brief_ansi_e_land_2016_Boteler_NCNC160247