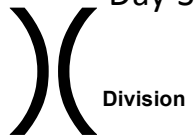


Boteler Fire

NC-NCF-160247

IAP Tile Div X/Z

11/9/2016
Day Shift



Division



Drop Point



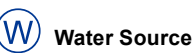
Fire Origin



Helispot



Repeater



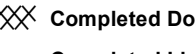
Water Source



Fire Station



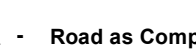
Uncontrolled Fire Edge



Completed Dozer Line



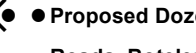
Completed Line



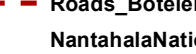
Hand Line



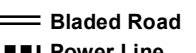
Road as Completed Line



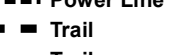
Planned Secondary Line



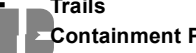
Proposed Dozer Line



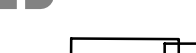
Roads_BotelerArea selection



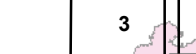
NantahalaNationalForest_POI



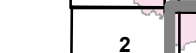
Bladed Road



Power Line



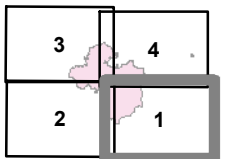
Trail



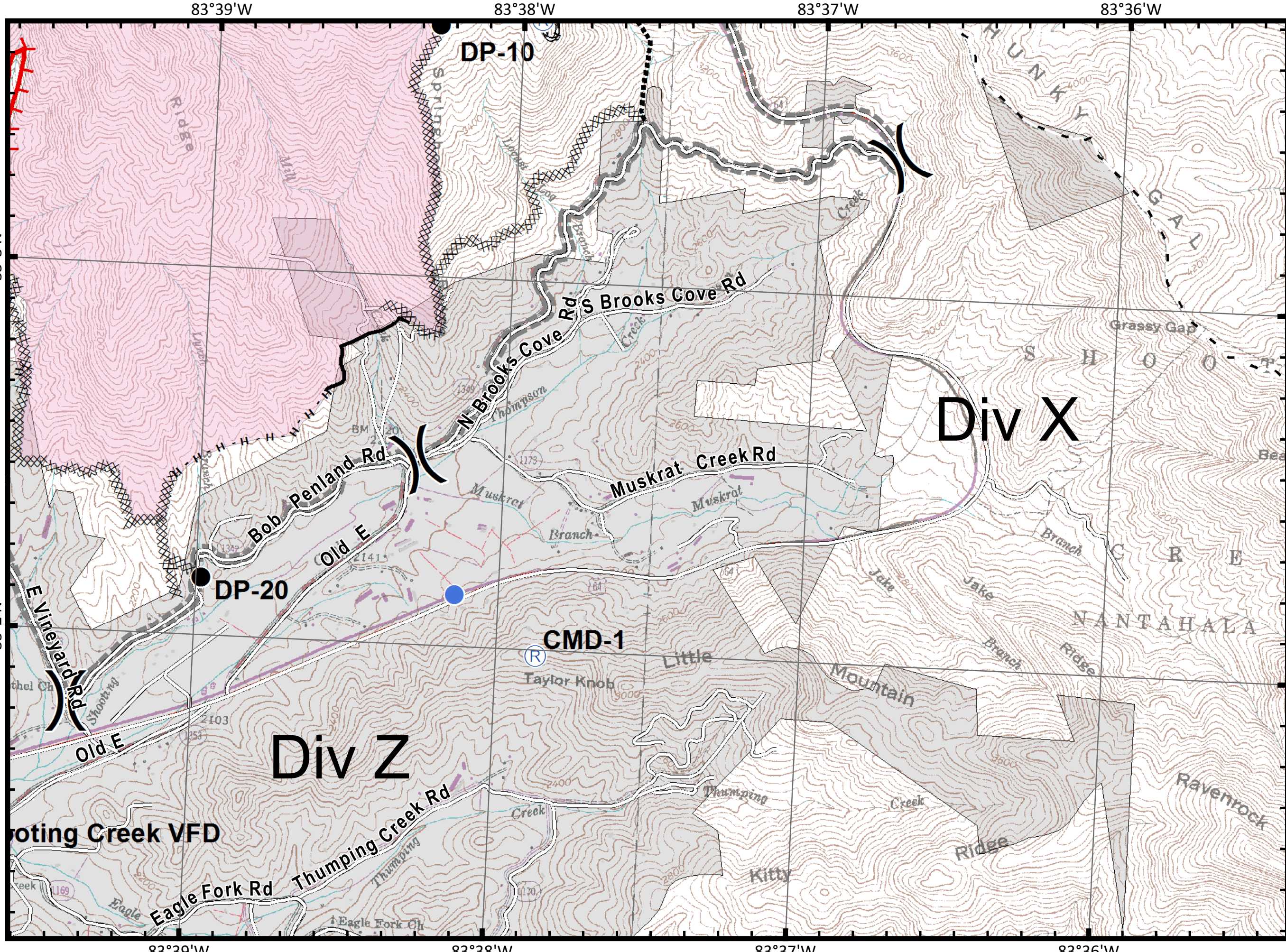
Trails



Containment Perimeter



Feet



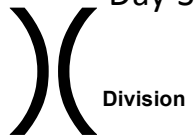
IAP_8x11_land_2016_Boteler_NCNCF160247

Boteler Fire

NC-NCF-160247

IAP Tile Div A/C

11/9/2016
Day Shift



Division

● Drop Point

⊗ Fire Origin

● Helispot

Ⓡ Repeater

Ⓜ Water Source

ⓕ Fire Station

▬ Uncontrolled Fire Edge

⊗ Completed Dozer Line

▬ Completed Line

H - Hand Line

R - Road as Completed Line

● Planned Secondary Line

⊗ Proposed Dozer Line

- - Roads_BotelerArea selection

NantahalaNationalForest_POI

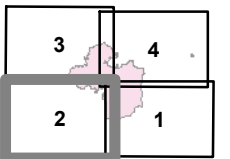
▬ Bladed Road

▬ Power Line

▬ Trail

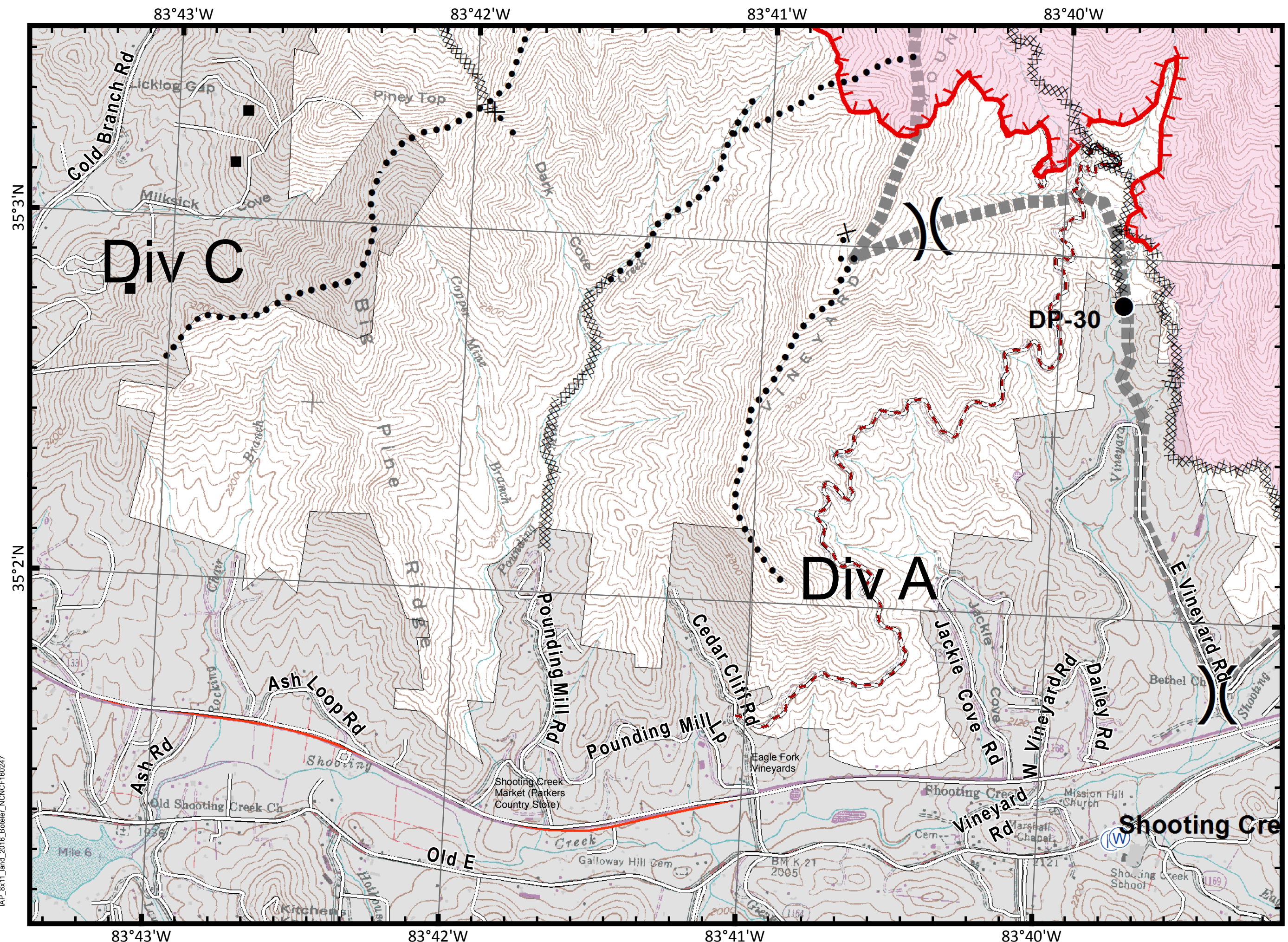
▬ Trails

⊕ Containment Perimeter



Feet

11/8/2016 9:13:12 PM
NC StatePlane NAD83 Feet
E. Schmeckpeper, GISS(T)



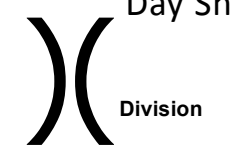
IAP_8x11_land_2016_Boteler_NONCF160247

Boteler Fire

NC-NCF-160247

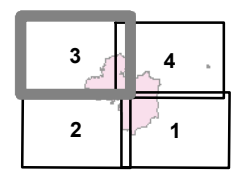
IAP Tile Div C/E

11/9/2016
Day Shift

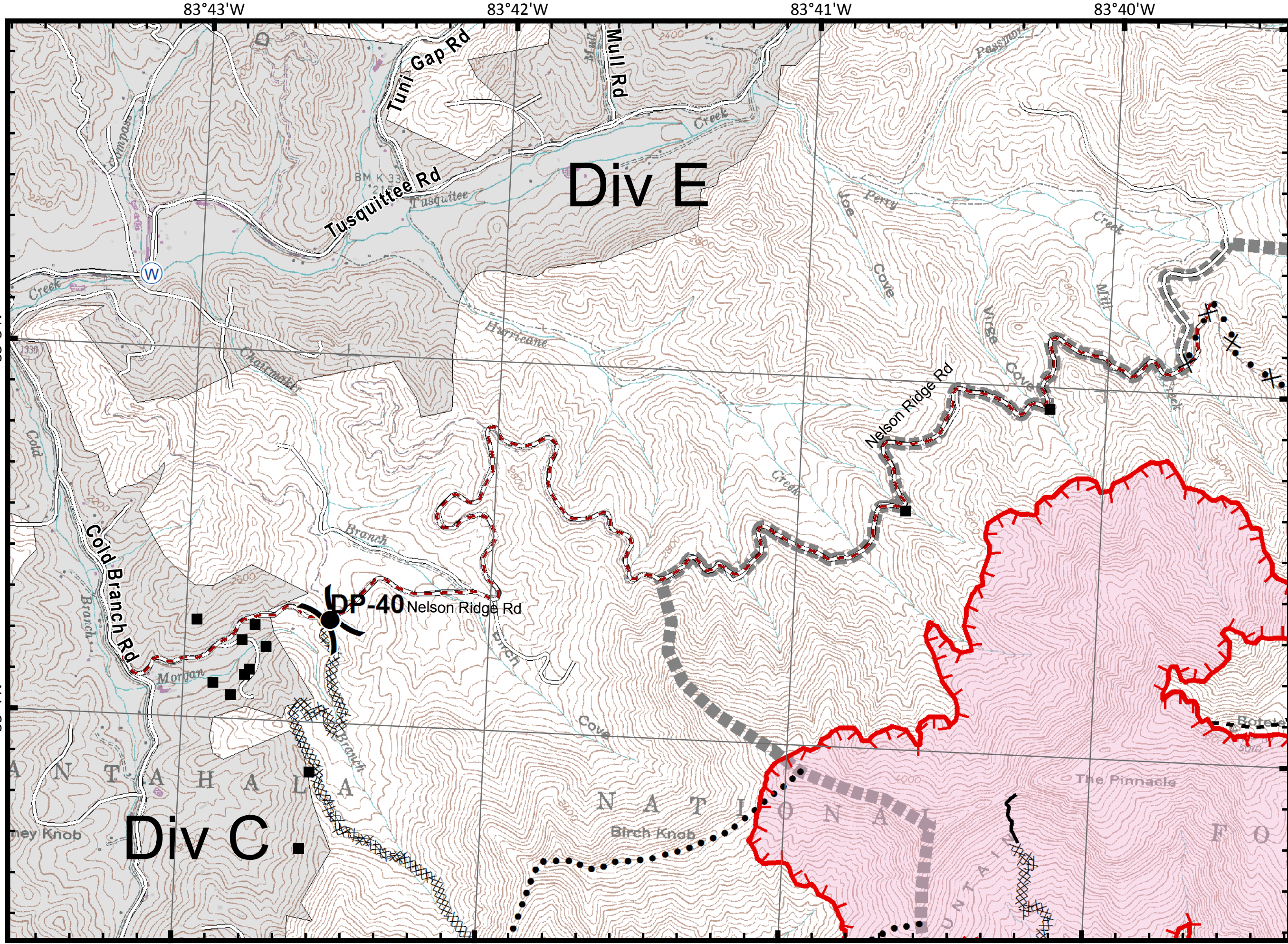


- Drop Point
- ⊗ Fire Origin
- Helispot
- Ⓡ Repeater
- Ⓜ Water Source
- ⓕ Fire Station

- ▬ Uncontrolled Fire Edge
- ⊗ Completed Dozer Line
- ▬ Completed Line
- H - Hand Line
- R - Road as Completed Line
- Planned Secondary Line
- ⊗● Proposed Dozer Line
- - Roads_BotelerArea selection
- NantahalaNationalForest_POI
- ▬ Bladed Road
- ▬ Power Line
- ▬ Trail
- ▬ Trails
- ⊕ Containment Perimeter



Feet



Div E

Div C

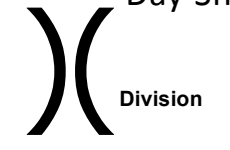
83°40'W 83°39'W 83°38'W 83°37'W 83°36'W

Boteler Fire

NC-NCF-160247

IAP Tile Div J/V

11/9/2016
Day Shift



Division



Drop Point



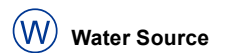
Fire Origin



Helispot



Repeater



Water Source



Fire Station



Uncontrolled Fire Edge



Completed Dozer Line



Completed Line



Hand Line



Road as Completed Line



Planned Secondary Line



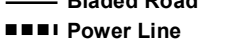
Proposed Dozer Line



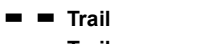
Roads_BotelerArea selection



NantahalaNationalForest_POI



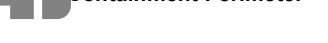
Bladed Road



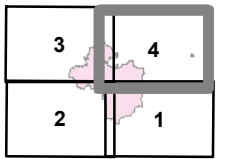
Power Line



Trail



Containment Perimeter



Feet

35°5'N

35°5'N

35°4'N

35°4'N

83°39'W 83°38'W 83°37'W 83°36'W

Div J

Div V

IRAWS 13

Buck Creek Fire

CMD-2

Chunky Gal

DP-10

IAP_8x11_land_2016_Boteler_NONCF160247