

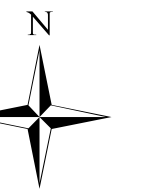


Ferebee & Tellico Fires

Ops Map

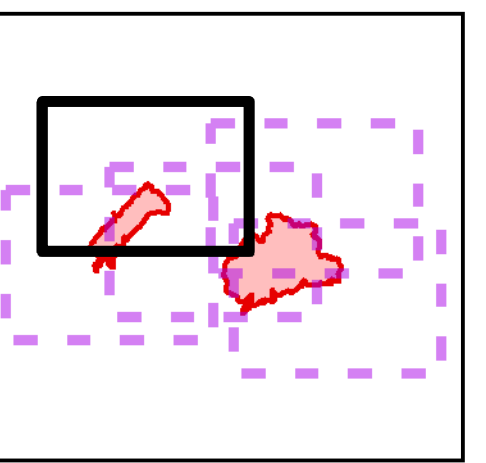
Div BB / FF / II

11/9/2016
Day Shift

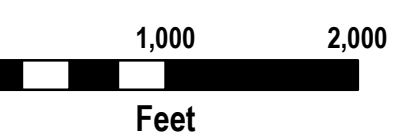
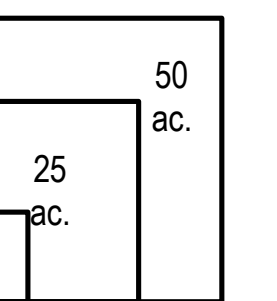


- Division
- Uncontrolled Fire Edge
- Completed Dozer Line
- Completed Line
- Completed Hand Line
- Road as Completed Line
- Drop Point
- Trail
- Trail of Tears
- Structure

Index Map



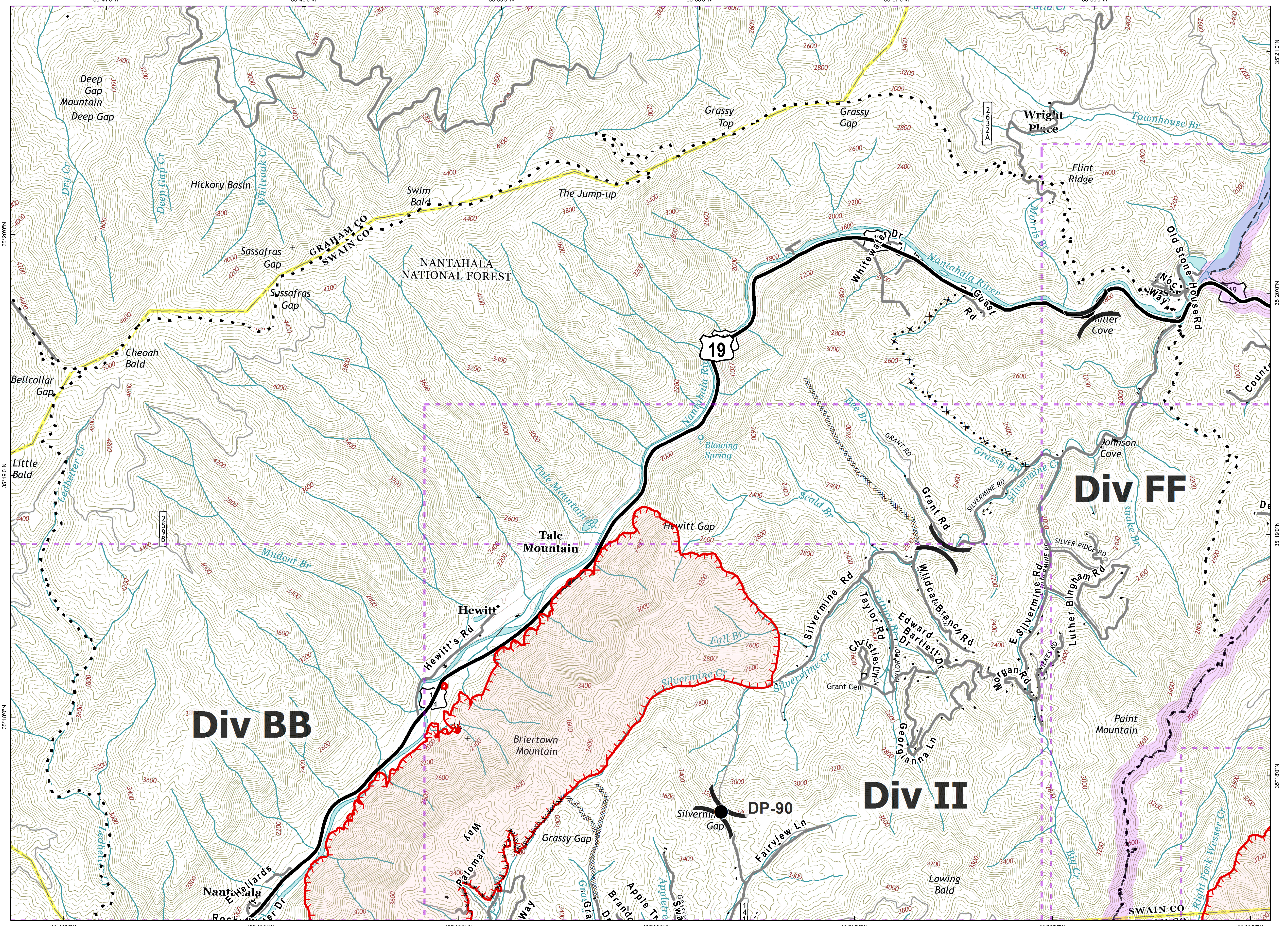
Download a GeoPDF



Information shown is based on the best available data at the time of map production.

Latest intel: 20161107 @ 2254

20161108 @ 0619
Map Datum: NAD83 Feet
Author: A. Thompson, GISS



Document Name: ops_FerebeeTellico_20161109_2330_ansi_d_land_NCNCNF160299_NCNCNF160280_1109day